

Overview

1. Mode Button
Change from Bluetooth →
Aux-in → MicroSD →
USB Audio

Battery Level Legend:

- 100% – 75%
- 75% – 50%
- 50% – 25%
- 25% – 1%

LED Indicators:

- AUX-IN (Blue)
- SD CARD (Green)
- USB AUDIO (Purple)

Connections:

- AUX-IN
- SD CARD
- USB AUDIO
- LL (Left)
- RR (Right)

PC/MAC Connections:

- MicroSD
- USB

(Not included)

Source Selection

Bluetooth

USB Audio

AUX-in

SD Card

Bluetooth

Take call

Mute call

Reject call

Call Controls:

- M + - = <<
- M + + = >>

Aux-in

Mobile Device

PC/MAC

Wireless Stereo: Link

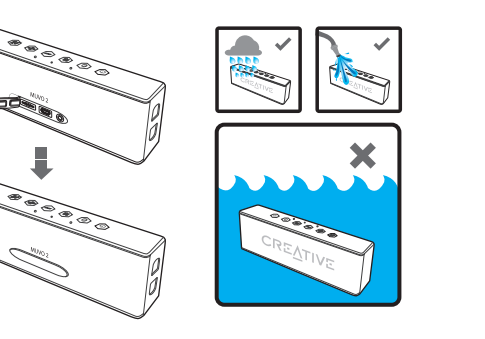
LL

RR

Wireless Stereo: Unlink

LL

RR



MicroSD (SD Card 128GB Max)

Fat 16, 32
MP3, WMA, FLAC, WAV

Read SD Card

USB Audio

PC/MAC

Register your products at
www.creative.com/register

TECHNICAL SUPPORT
www.creative.com/support

EN | Technical Specifications

Bluetooth® Version: Bluetooth® 4.2
Operating Frequency: 2402 – 2480 MHz
Operating Range: Up to 10 meters, measured in open space. Walls and structures may affect range of device.
Supported Bluetooth® Profiles: A2DP (Wireless Stereo Bluetooth®), AVRCP (Bluetooth® Remote Control), HFP (Handset profile)
Supported Audio Formats (For SD card playback): MP3, WAV, WMA, FLAC
Does not support WMA PRO/lossless, (Extra High and above)
Support USB Audio for PC/MAC
Lithium Ion Battery: 3.7V 2200mAh (8.14Wh)
Input: 5V ~950mA
Battery Saving Mode: The speaker automatically powers down when there is no Bluetooth® connection or no audio cable attached for more than 10 minutes.
Operating Temperature Range: 0°C – 45°C
Note: Compliance markings are located on the bottom of this product.
*Not Included. Sold Separately.

Other Information

For the latest, online version of this guide, DoC and supplementary documentation such as safety and regulatory information for this product, please visit creative.com/support/muvo2
Detailed instructions on removal of integrated battery can be found at Quickstart User Guide / Safety and Regulatory Information (creative.com/support/muvo2), these instructions are meant strictly for independently qualified professionals.

Notice for Singapore

Complies with
IDA Standards
DA 107311

ES Herby, Creative Labs Pte. Ltd. declara que el altavoz Bluetooth, modelo n.º MF8255 es conforme con la Directiva 2014/53/UE. El texto completo de la declaración de conformidad de la UE está disponible en <http://www.creative.com/EUDoC>

FR Par la présente, Creative Labs Pte. Ltd. déclare que l'enceinte Bluetooth que le modèle n.º MF8255 est conforme à la Directive 2014/53/UE. L'intégralité du texte de la déclaration de conformité européenne est disponible sur <http://www.creative.com/EUDoC>

DE Hiermit erklärt Creative Labs Pte. Ltd. Bluetooth-Lautsprecher, Modellnr. MF8255 der Richtlinie 2014/53/EU entspricht. Der vollständige Text der EU-Konformitätserklärung ist unter <http://www.creative.com/EUDoC> verfügbar.

IT Per il presente, Creative Labs Pte. Ltd. dichiara che l'altavoz Bluetooth, modello n.º MF8255, rispetta la direttiva 2014/53/UE. Il testo completo della dichiarazione di conformità UE è disponibile su <http://www.creative.com/EUDoC>

PT Creative Labs Pte. Ltd. declara que o altavoz Bluetooth, modelo n.º MF8255, cumpre com a legislação da UE. O texto completo da declaração de conformidade da UE está disponível em <http://www.creative.com/EUDoC>

PL Creative Labs Pte. Ltd. deklaruje, że głośnik Bluetooth, model n.º MF8255 jest zgodny z dyrektywą 2014/53/UE. Pełny tekst deklaracji zgodności UE można zapoznać się pod adresem <http://www.creative.com/EUDoC>

GR Η Creative Labs Pte. Ltd. δηλώνει ότι το προϊόν Bluetooth ηχείο, μοντέλο με αριθμό MF8255 συμμορφώνεται με την Οδηγία Directive 2014/53/UE. Μπορείτε να βρείτε το πλήρες κείμενο για τη δήλωση της ΕΕ σχετικά με τη συμμόρφωση στο <http://www.creative.com/EUDoC>

RU Spółka Creative Labs Pte. Ltd. niniejszym oświadcza, że Głośnik Bluetooth, model MF8255 jest zgodny z dyrektywą 2014/53/UE. Z pełnym tekstem deklaracji zgodności UE można zapoznać się pod adresem <http://www.creative.com/EUDoC>

UK Spoločnosť Creative Labs Pte. Ltd. týmto vyhlasuje, že Reprodukčor Bluetooth, č. modelu MF8255, je v súlade so smernicou č. 2014/53/EU. Uplný znenie vyhlásenia o zhode EÚ je k dispozícii na lokalite <http://www.creative.com/EUDoC>

CZ Společnost Creative Labs Pte. Ltd. tímto prohlašuje, že výrobek Reprodukčor Bluetooth, model č. MF8255 vyhovuje směrnici 2014/53/EU. Uplný znění EU prohlášení o shodě je k dispozici na <http://www.creative.com/EUDoC>

TR A Creative Labs Pte. Ltd. szóstán kijelenti, hogy a(z) Bluetooth hangszóró termék, modellszám MF8255, megfelel a 2014/53/EU irányelvben foglalt követelményeknek. Az EU megfelelési nyilatkozat teljes szövegét elérhető a következő címen: <http://www.creative.com/EUDoC>

UA Настановчий документом Creative Labs Pte. Ltd. заарявляє, що Динамік з підключенням по Bluetooth, модель № MF8255 повністю відповідає Директиві 2014/53/ЄС. Повний текст Декларації о відповідності вимогам ЄС доступний за сайтом <http://www.creative.com/EUDoC>

LT „Creative Labs Pte. Ltd.“ pareškia, kad „Bluetooth“ garsiakalbis, modelio Nr. MF8255, atitinka Direktyvos 2014/53/ES reikalavimus. Visa ES atitikties deklaracija yra pateikiama <http://www.creative.com/EUDoC>

© 2016 Creative Labs Pte. Ltd. All rights reserved. Creative, the Creative logo, and MUVO are trademarks or registered trademarks of Creative Technology Ltd in the United States and/or other countries. The Bluetooth® word mark and logo are owned by the Bluetooth SIG, Inc. and any use of such marks by Creative Technology Ltd is under license. microSDHC, microSDXC logos are trademarks of SD-CC, LLC. All other trademarks are the property of their respective owners and are hereby recognized as such. All specifications are subject to change without notice. Actual product may differ slightly from images shown. Use of this product is subject to a limited warranty.

P/N. 03MF825500000 Rev C

creative.com/support/muvo2
日本語: jp.creative.com/downloads/muvo2