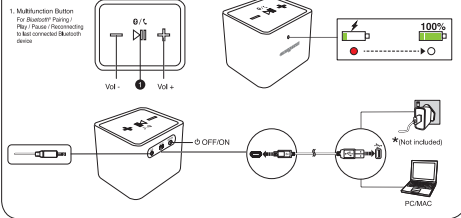


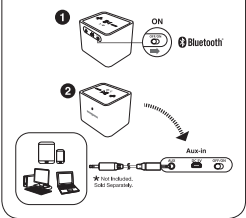
**Overview**



- 1. Multifunction Button: For Bluetooth Pairing / Play/Pause / Resuming / Not connected Bluetooth device
- 2. On/Off Switch
- 3. Volume Buttons
- 4. LED Indicator
- 5. Charging Port
- 6. PC/MAC
- 7. Mobile Device

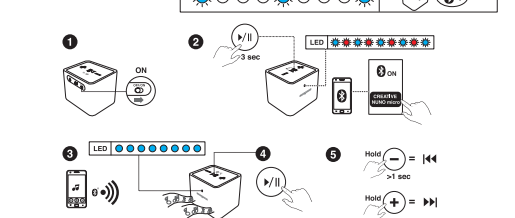
**TECHNICAL SUPPORT**  
creative.com/speakers

**Source Selection**

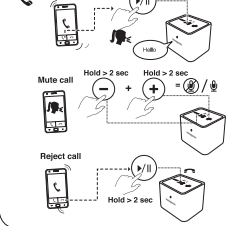


- 1. Bluetooth
- 2. Aux-in
- 3. Mobile Device
- 4. PC/MAC

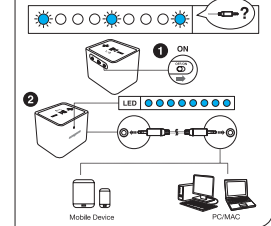
**Source: Bluetooth**



**Take call**



**Source: Aux-in**



**EN | Technical Specifications**

**Bluetooth® Version:** Bluetooth 2.1 + EDR  
**Operating Frequency:** 2402 ~ 2483.5MHz  
**Operating Range:** Up to 10 meters, measured in open space. Walls and structures may affect range of signal.  
**Supported Bluetooth Profiles:** A2DP (streaming stereo Bluetooth), AVRCP (Bluetooth Remote Control), HFP (Handsfree profile)  
**Supported Codec:** SBC  
**Lithium-Ion Battery:** 3.7V 500mAh (1.85Wh)  
**Input:** DC 5V 200mA  
**Battery Saving Mode:** The speaker automatically powers down when there is no Bluetooth connection or no audio cable attached for more than 10 minutes.  
**Operating Temperature Range:** 0°C ~ 40°C  
**Note:** Compliance markings are located on the bottom of this product.  
 \* Non inclusa. Verifica separatamente.

**Other Information**

For the latest and the most up-to-date public, DoC and supplementary documentation such as safety and regulatory information for this product, please visit [www.creative.com/support](http://www.creative.com/support).  
 Detailed instructions on removal of regulated battery can be found at Creative User Guide. Safety and Regulatory Information (including compliance information), these instructions are subject to regulatory qualified professionals.  
**Notice for Singapore:**  
 Complies with DA Standards DA 107311

**DE | Technische Daten**

**Bluetooth® Version:** Bluetooth 2.1 + EDR  
**Betriebsfrequenz:** 2402 ~ 2483,5 MHz  
**Reichweite:** Bis zu 10 m in freier Umgebung. Wände und feste Strukturen können einen Einfluss auf die Reichweite haben.  
**Unterstützte Bluetooth Profile:** A2DP (Streaming Stereo Bluetooth), AVRCP (Bluetooth Remote Control), HFP (Handsfree-Profile)  
**Unterstützte Codec:** SBC  
**Lithium-Ionen-Batterie:** 3,7 V 500 mAh (1,85 Wh)  
**Eingang:** DC 5V 200 mA  
**Batteriesparmodus:** Der Lautsprecher wird automatisch ausgeschaltet, wenn länger als 10 Minuten keine Bluetooth-Verbindung besteht oder kein Audio-Kabel angeschlossen ist.  
**Betriebsstemperaturbereich des Gerätes:** 0°C ~ 40°C  
**Hinweis:** Die Konformitätskennzeichnungen sind auf der Unterseite des Produkts.  
 \* Nicht enthalten. Separat erhältlich.

**Weitere Informationen**

Per le ultime e le più aggiornate informazioni, documenti tecnici, informazioni di sicurezza e regolamentazione, visitate [www.creative.com/support](http://www.creative.com/support).  
 Istruzioni dettagliate sulla rimozione della batteria regolata possono essere trovate su Guida Utente. Informazioni sulla sicurezza e normative (inclusa [www.creative.com/support](http://www.creative.com/support)), sono informazioni a carattere professionale e soggette a qualifiche professionali.  
**Nota:** l'etichetta di conformità si trova sul fondo del prodotto.  
 \* Non inclusa. Verifica separatamente.

**ES | Especificaciones Técnicas**

**Version Bluetooth®:** Bluetooth 2.1 + EDR  
**Frecuencia Operativa:** 2402 ~ 2483,5 MHz  
**Alcance Operativo:** Hasta dos metros en espacio abierto. Las paredes o estructuras pueden afectar el alcance de la señal.  
**Perfiles Bluetooth® soportados:** A2DP (Streaming Stereo Bluetooth), AVRCP (Control Remoto de Bluetooth), HFP (Perfil de manos libres)  
**Codificación de audio soportada:** SBC  
**Batería de Iones de Litio:** 3,7 V, 500 mAh (1,85 Wh)  
**Entrada:** DC 5V 200 mA  
**Modo de Ahorro de Batería:** El altavoz se apaga automáticamente cuando no hay conexión Bluetooth o no hay ningún cable de audio conectado durante más de 10 minutos.  
**Rango de Temperatura Operativa del Dispositivo:** 0°C ~ 40°C  
**Nota:** La certificación sobre cumplimiento en el etiquetado de este producto.  
 \* No se incluye. Verificar por separado.

**Otra Información**

Para consultar la versión más reciente de esta guía, DoC y documentación técnica, información de seguridad y reguladora de este producto, visite [www.creative.com/support](http://www.creative.com/support).  
 Instrucciones detalladas sobre la remoción de la batería regulada pueden ser encontradas en el manual de usuario. Información de seguridad y normativa (incluida [www.creative.com/support](http://www.creative.com/support)), estas instrucciones se destinan exclusivamente a profesionales de calificación de forma independiente.

**FR | Caractéristiques Techniques**

**Version Bluetooth®:** Bluetooth 2.1 + EDR  
**Fréquence de Fonctionnement:** 2402 ~ 2483,5 MHz  
**Portée de Fonctionnement:** Jusqu'à 10 mètres, mesurés dans un espace ouvert. Les murs et les autres obstacles peuvent influer sur la portée du signal.  
**Profils Bluetooth® pris en charge:** A2DP (Bluetooth stéréo streaming), AVRCP (commande à distance Bluetooth), HFP (profil main-libre)  
**Codage audio pris en charge:** SBC  
**Batterie Lithium-Ion:** 3,7 V 500mAh (1,85Wh)  
**Entrée:** DC 5V 200mA  
**Mode Économie d'Énergie:** Le haut-parleur se met automatiquement hors tension si il n'y a pas de connexion Bluetooth ou si aucun câble audio n'est connecté pendant plus de 10 minutes.  
**Température de Fonctionnement du Périphérique:** 0°C ~ 40°C  
**Remarque:** Le marquage de conformité est situé sur la partie inférieure de ce produit.  
 \* Non inclus. Vérifier séparément.

**Autres Informations**

Plus la version la plus récente de cette guide, DoC et autres documents sur ce produit, consultez [www.creative.com/support](http://www.creative.com/support).  
 Des instructions détaillées sur la démontage de la batterie réglée peuvent être trouvées à Guide de l'utilisateur. Informations de sécurité et réglementaires (y compris [www.creative.com/support](http://www.creative.com/support)), ces informations sont destinées exclusivement à des professionnels qualifiés.

**IT | Specifiche Tecniche**

**Version Bluetooth®:** Bluetooth 2.1 + EDR  
**Frequenza Operativa:** 2402 ~ 2483,5 MHz  
**Portata Operativa:** Fino a 10 metri, misurati in uno spazio aperto. Muri e altri ostacoli possono ridurre la portata del segnale.  
**Profili Bluetooth® Supportati:** A2DP (Bluetooth streaming stereo), AVRCP (Bluetooth a distanza), HFP (profilo profilo main-free)  
**Codifica Audio Supportata:** SBC  
**Batteria agli Ioni di Litio:** 3,7 V 500mAh (1,85 Wh)  
**Entrata:** DC 5V 200mA  
**Regolazione di Consumo Energetico:** L'altoparlante si spegne automaticamente in caso di assenza di connessione Bluetooth o se per più di 10 minuti non c'è stato collegato alcun cavo audio.  
**Gamma Temperature di Funzionamento del Dispositivo:** 0°C ~ 40°C  
**Note:** L'etichetta di conformità si trova sul fondo del prodotto.  
 \* Non inclusa. Verificare separatamente.

**Ulteriori Informazioni**

Per la versione online più recente della presente guida, DoC e per la documentazione supplementare per questo prodotto, visitate [www.creative.com/support](http://www.creative.com/support).  
 Istruzioni dettagliate sulla rimozione della batteria regolata possono essere trovate su Guida Utente. Informazioni di sicurezza e normative (inclusa [www.creative.com/support](http://www.creative.com/support)), sono informazioni a carattere professionale e soggette a qualifiche professionali.  
 Le presenti istruzioni sono rivolte esclusivamente a professionisti qualificati.

**RU | Технические Спецификации**

**Bluetooth® Версия:** Bluetooth 2.1 + EDR  
**Рабочая частота:** 2402 ~ 2483,5 МГц  
**Радиус действия:** До 10 метров, измеренный в открытом пространстве. Стены и другие препятствия могут влиять на радиус действия сигнала.  
**Поддерживаемые профили Bluetooth®:** A2DP (Bluetooth стерео потоковая передача), AVRCP (Bluetooth дистанционное управление), HFP (Bluetooth профиль hands-free)  
**Поддерживаемый кодек:** SBC  
**Аккумулятор:** Литий-ионный, 3,7 В, 500 мАч (1,85 Вт·ч)  
**Вход:** DC 5V 200 мА  
**Режим экономии энергии:** Динамик автоматически выключается, если нет соединения Bluetooth или если более 10 минут не подключено аудио кабель.  
**Диапазон рабочих температур устройства:** 0°C ~ 40°C  
**Примечание:** Маркировка соответствия находится на нижней стороне продукта.  
 \* Не включено. Проверить отдельно.

**Остальная информация**

Для получения самой последней версии этой инструкции, DoC и дополнительной документации по этому продукту, посетите [www.creative.com/support](http://www.creative.com/support).  
 Подробные инструкции по удалению регулируемой батареи можно найти в руководстве пользователя. Информация о безопасности и нормативных требованиях (включая [www.creative.com/support](http://www.creative.com/support)), эти инструкции предназначены исключительно для профессионалов соответствующей квалификации.

NOTE: This equipment has been tested and found to comply with the limits for a Class B digital device, pursuant to part 15 of the FCC Rules. These limits are designed to provide reasonable protection against harmful interference in a residential installation. This equipment generates uses and can radiate radio frequency energy and, if not installed and used in accordance with the instructions, may cause harmful interference to radio communications. However, there is no guarantee that interference will not occur in a particular installation. If this equipment does cause harmful interference to radio or television reception, which can be determined by turning the equipment off and on, the user is encouraged to try to correct the interference by one or more of the following measures:

- Reorient or relocate the receiving antenna.
- Increase the separation between the equipment and receiver.
- Connect the equipment into an outlet on a circuit different from that to which the receiver is connected.
- Consult the dealer or an experienced radio/TV technician for help

Changes or modifications not expressly approved by the party responsible for compliance could void the user's authority to operate the equipment. This device complies with Part 15 of the FCC Rules. Operation is subject to the following two conditions:

- (1) this device may not cause harmful interference, and
- (2) this device must accept any interference received, including interference that may cause undesired operation.

This device complies with Industry Canada licence-exempt RSS standard(s). Operation is subject to the following two conditions: (1) this device may not cause interference, and (2) this device must accept any interference, including interference that may cause undesired operation of the device.

Le présent appareil est conforme aux CNR d'Industrie Canada applicables aux appareils radio exempts de licence. L'exploitation est autorisée aux deux conditions suivantes : (1) l'appareil ne doit pas produire de brouillage, et (2) l'utilisateur de l'appareil doit accepter tout brouillage radioélectrique subi, même si le brouillage est susceptible d'en compromettre le fonctionnement.