



Quick Start

Copyright © 2004 Creative Technology Ltd. All rights reserved. The Creative logo, Creative MediaSource and FreePoint are trademarks or registered trademarks of Creative Technology Ltd. in the United States and/or other countries. Microsoft, Windows and the Windows logo are registered trademarks of Microsoft Corporation. All other products are trademarks or registered trademarks of their respective owners and are hereby recognized as such. All specifications are subject to change without prior notice. Actual contents may differ slightly from those pictured.

FR _____

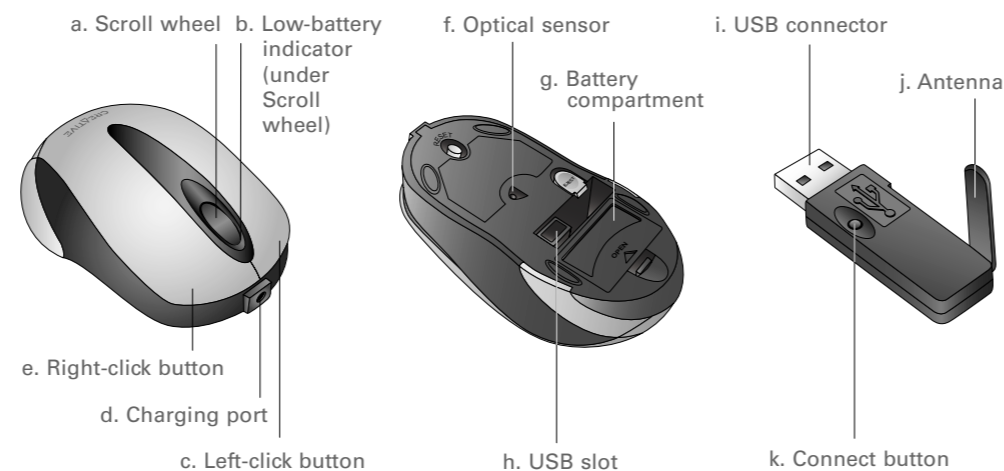
ES _____

BP _____

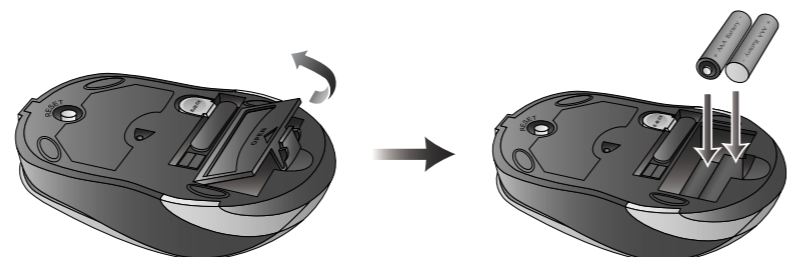
TR _____

CREATIVE FreePoint™ Travel Mouse

Overview



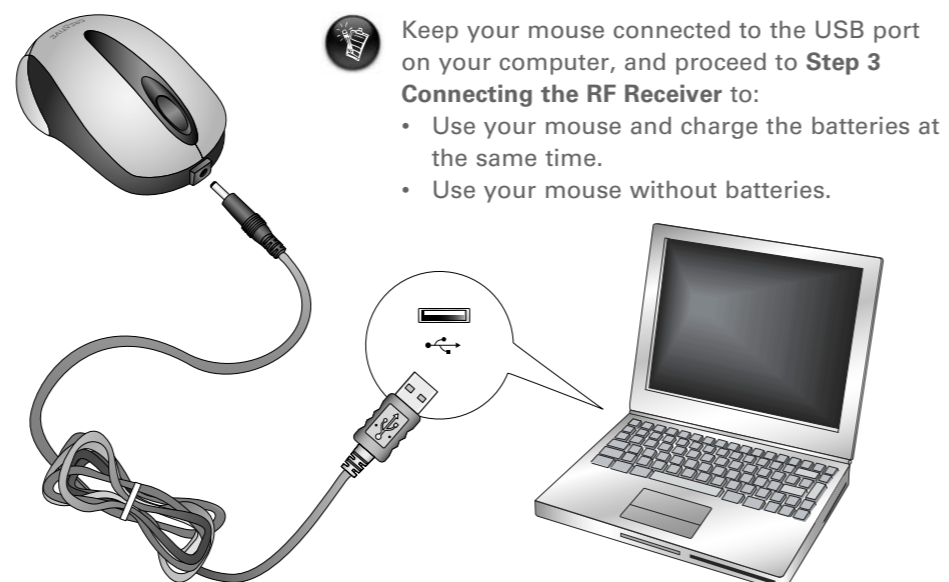
1. Inserting Batteries



Your mouse is supplied with two rechargeable AAA batteries. **DO NOT mix batteries of different brands and capacities.**

2. Charging Batteries (Optional)

1. Connect the USB charging cable to the USB port on your computer and the Charging port on your mouse as shown.
2. Fully charge the batteries for about four hours (**initial charge: eight hours**).
3. Disconnect the mouse from the charging cable. When the Low-battery indicator blinks in red, repeat steps 1 and 2 to charge the batteries.

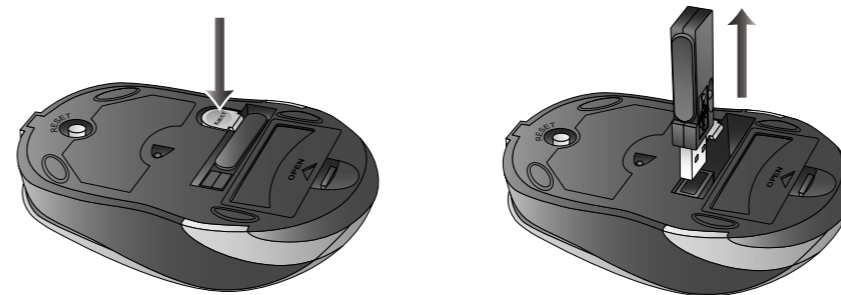


If you use non-rechargeable alkaline batteries, skip this step and proceed to **Step 3 Connecting the RF Receiver**. **DO NOT** attempt to charge non-rechargeable alkaline batteries. The batteries may leak and damage your mouse.

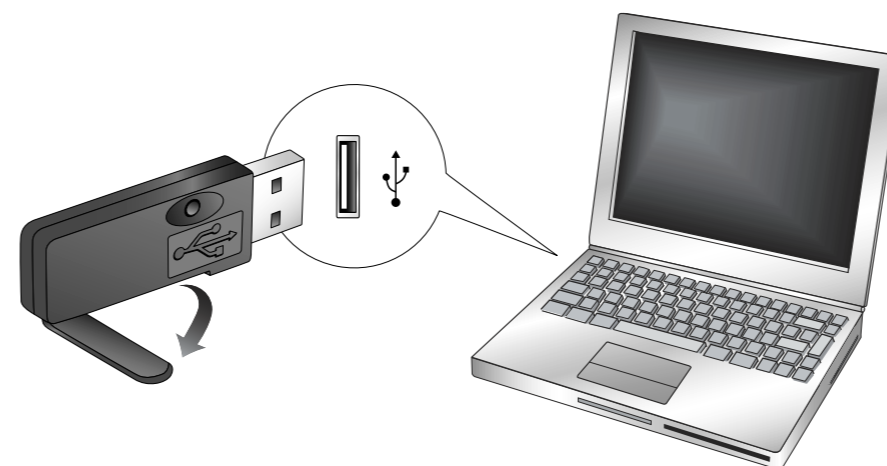
3. Connecting the RF Receiver

1. Press the **EJECT** button at the back of your mouse.
2. Remove the RF Receiver.

The RF Receiver is released and the red Optical sensor lights up to indicate that the mouse is turned on.



3. Rotate the RF Receiver's antenna and connect the RF Receiver to an available USB port on your computer.



For Windows XP/2000/Me:

After you have connected the USB device, Windows will detect the USB device and install the required drivers automatically.

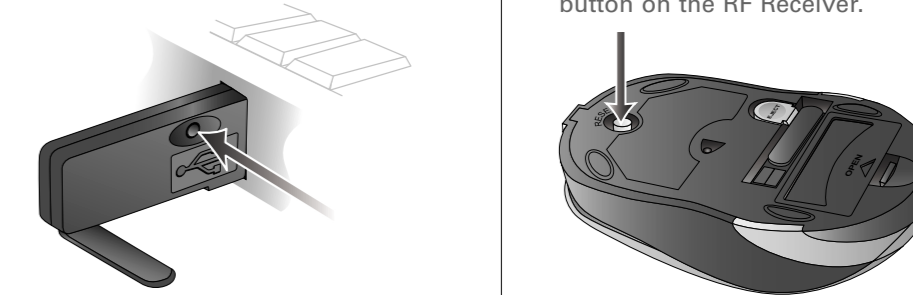
For Windows 98 SE:

Users may be prompted by an **Add New Hardware Wizard** dialog box when Windows detects the USB device. Make sure the original mouse is connected and follow the instructions on the screen. You may need to insert the Windows Installation CD into the CD-ROM drive. Some computers may be supplied without the Windows CD, but have the necessary files stored in **c:\windows\options\cabs** (replace c:\ with the drive letter your Windows has been installed on).

4. Activating Your Travel Mouse

1. Press the **Connect** button on the RF Receiver.
2. Press the **RESET** button on your mouse.

Make sure you press the **RESET** button on the mouse within 10 seconds of pressing the **Connect** button on the RF Receiver.



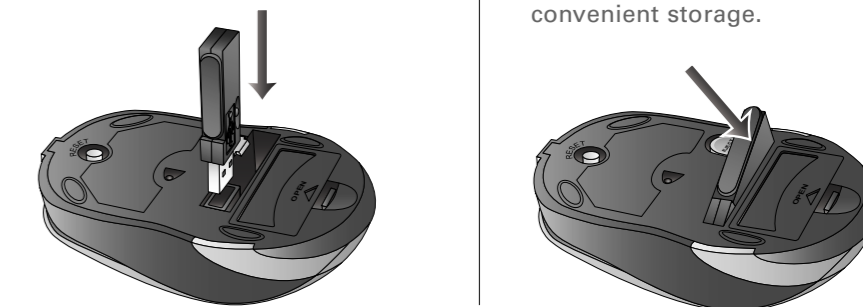
3. Test your mouse. If it does not respond, repeat steps 1 and 2 again.

Repeat steps 1 and 2, when replacing batteries.

5. Storing Your Travel Mouse

1. Insert the RF Receiver into the USB slot.
2. Rotate and press the RF Receiver as shown.

The **EJECT** button clicks and the RF Receiver is held in place for convenient storage.



Your mouse turns off when the RF Receiver is fully inserted. Conserve battery power by turning off your mouse when it is not in use.

Frequently Asked Questions

My mouse seems to be experiencing interference. Is there anything I can do?

- You can reset your mouse.
1. Press and hold the **RESET** button on your mouse for five seconds.
 2. Press the **Connect** button on the RF Receiver.

More Information

Register your product!

Enjoy a host of benefits by registering your product during installation, or at www.creative.com/register. Benefits include:

- Service and product support from Creative
- Exclusive updates on promotions and events

Please note that your warranty rights are not dependent on product registration.

Creative Knowledge Base

Resolve and troubleshoot technical queries at Creative's 24-hour self-help Knowledge Base. Go to www.creative.com and select your region.

FEDERAL COMMUNICATIONS COMMISSION

This device complies with Part 15 of the FCC Rules. Operation is subject to the following two conditions:(1) this device may not cause harmful interference, and (2) this device must accept any interference received, including interference that may cause undesired operation.

NOTE

This equipment has been tested and found to comply with the limits for a Class B digital device, pursuant to Part 15 of the FCC Rules. These limits are designed to provide reasonable protection against harmful interference in a residential installation. This equipment generates, uses and can radiated radio frequency energy and, if not installed and used in accordance with the instructions, may cause harmful interference to radio communications. However, there is no guarantee that interference will not occur in a particular installation. If this equipment does cause harmful interference to radio or television reception, which can be determined by turning the equipment off and on, the user is encouraged to try to correct the interference by one or more of the following measures:

- Reorient or relocate the receiving antenna.
- Increase the separation between the equipment and receiver.
- Connect the equipment into an outlet on a circuit different from that to which the receiver is connected.
- Consult the dealer or an experienced radio/TV technician for help.

Changes or modifications not expressly approved by the party responsible for compliance could void the user's authority to operate the equipment.

This device and its antenna(s) must not be co-located or operating in conjunction with any other antenna or transmitter.