

DI

CE DOCUMENT EST LA PROPRIETE DE LA SOCIETE CROUZET. IL NE PEUT ETRE REPRODUIT OU COMMUNIQUE SANS SON AUTORISATION. LES DESCRIPTIONS ET CARACTERISTIQUES FIGURANT SUR CE DOCUMENT SONT DONNEES UNIQUEMENT A TITRE D'INFORMATION ET NON D'ENGAGEMENT CONTRACTUEL. CROUZET SE RESERVE LE DROIT D'EFFECTUER SANS PREAVIS, TOUTE MODIFICATION - TOUS DROITS DE REPRODUCTION RESERVES POUR TOUS PAYS. THIS DOCUMENT IS THE PROPERTY OF CROUZET-AUTOMATISMES. ITS CONTENTS CANNOT BE REPRODUCED OR DIVULGED WITHOUT THE COMPANY'S WRITTEN APPROVAL. THE PRODUCT DATA AND SPECIFICATIONS FOUND ON THIS DOCUMENT DO NOT CONSTITUTE ANY CONTRACTUAL OBLIGATION. CROUZET-AUTOMATISMES AND ITS SUBSIDIARIES RESERVE THE RIGHT TO MODIFY THE SPECIFICATIONS ALL RIGHTS OF REPRODUCTION, MODIFICATION OR REPRINTING AND TRANSLATION RESERVED FOR ALL COUNTRIES.

**PRESENTATION**

APPAREIL ETANCHE EN FACE AVANT:  
MIL STD 810 D-506.2 METHODE 2  
BOITIER ET POUSSOIR EN POLYAMIDE 6-6 NOIR  
COSSES A SOUDER EN LAITON ARGENTE  
CONTACTS: ARGENT

**CARACTERISTIQUES MECANIKES DES 2 DIRECTIONS**

FORCES : SUIVANT F  
FORCE DE COMMANDE :  
FORCE DE RELACHEMENT :  
FORCE ADMISSIBLE EN FIN DE COURSE :  
ANGLE MESURE PAR RAPPORT A L'AXE DU POUSSOIR  
COURSE D'APPROCHE (CA):  
COURSE RESIDUELLE ALLER (CRA):  
COURSE RESIDUELLE RETOUR (CRR):  
ENDURANCE MECANIQUE PAR DIRECTION:  
VIBRATION : SELON NORME AIR 7306 TITRE 3  
a) SINUSOIDALES : FASCICULE 41 TABLEAU 2  
b) ALEATOIRES : FASCICULE 42 FIGURE 17

**CARACTERISTIQUES MECANIKES DE LA VALIDATION**

FORCES : SUIVANT Z  
FORCE DE COMMANDE :  
FORCE DE RELACHEMENT :  
FORCE ADMISSIBLE EN FIN DE COURSE :  
FORCE ADMISSIBLE A LA TRACTION :  
COURSE TOTALE :  
COURSE D'APPROCHE A LA COMMUTATION :  
ENDURANCE MECANIQUE :

**ELECTRICAL CHARACTERISTICS OF 2 CIRCUITS (AXIS Y)**

ELECTRICAL ENDURANCE : 100000 CYCLES

VOLTAGE	30Vdc	115 Vac 400 Hz	MINIMUM
RESISTOR	2A	2A	5 Vdc
SEL. INDUC. L/R=5m	1A	1A	
MINIMUM CURRENT	0.5mA	0.5mA	

\* CONTACT RESISTANCE IN ACCORDANCE WITH MIL 8805 D

**CARACTERISTIQUES GENERALES**

TEMPERATURE D'EMPLOI:  
TEMPERATURE DE STOCKAGE:  
MASSE:

**PRESENTATION**

WATERPROOF FRONT FACE: MIL STD 810 D-506.2 METHODE 2  
CASING AND BUTTON POLYAMIDE 6-6 BLACK  
SOLDER TERMINAL LUGS SILVER-PLATED BRASS  
CONTACTS: SILVER

**MECHANICAL PROPERTIES OF 2 DIRECTIONS**

F (SEE FIG.)  
OPERATING FORCE: 3N±1.5N  
RELEASE FORCE: 0.6N MIN. 70N MAX.  
PERMISSIBLE FORCE AT END OF TRAVEL: 70N MAX.  
ANGLE MEASURED FROM THE AXIS: 9°30' MAX. 1°30' MIN.  
PRE TRAVEL (CA):  
OVERTRAVEL (CRA):  
RETURN OVERTRAVEL (CRR):  
MECHANICAL STRENGTH PER DIRECTION: 100 000 CYCLES  
VIBRATIONS: IN ACCORDANCE WITH AIR 7306 TITRE 3  
a) SINUSOIDAL=PART 41-TABLE 2  
b) RANDOM=PART 42-SCHEME 17

**VALIDATION MECHANICALS PROPERTIES**

Z SEE FIG.  
OPERATING FORCE : 25N MAX.  
RELEASE FORCE: 2N MINI. 70N MAX.  
MAX. AUTHORIZED FORCE AT END OF TRAVEL: 80N MAX.  
PLUNGER STRENGTHNESS:PULLING ACTION:  
TOTAL TRAVEL: 2mm MINI. (.078 IN.)  
SWITCHING PRE TRAVEL: 1.8mm MAX. (.07 IN.)  
MECHANICAL STRENGTH: 50000 CYCLES

**ELECTRICAL CHARACTERISTICS OF VALIDATION CIRCUIT (AXIS Z)**

ELECTRICAL ENDURANCE : 50000 CYCLES

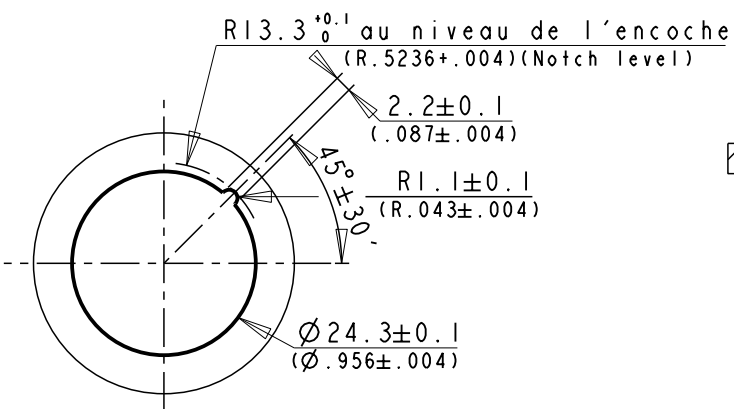
VOLTAGE	30Vdc	115 Vac 400 Hz	MINIMUM
RESISTOR	0.5A	0.5A	5 Vdc
MINIMUM CURRENT	0.5mA	0.5mA	

**GENERAL PROPERTIES**

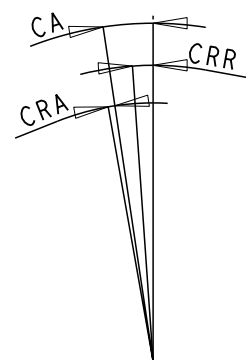
OPERATING TEMPERATURE: -55°C A +85°C  
STORAGE TEMPERATURE: -55°C A +85°C  
MASSE: 0.0157Kg ±5%

**FIXATION PAR COLLAGE  
ASSEMBLING BY GLUE**

USINAGE PLATINE  
PLATE MACHINING



TRAVEL SCHEME

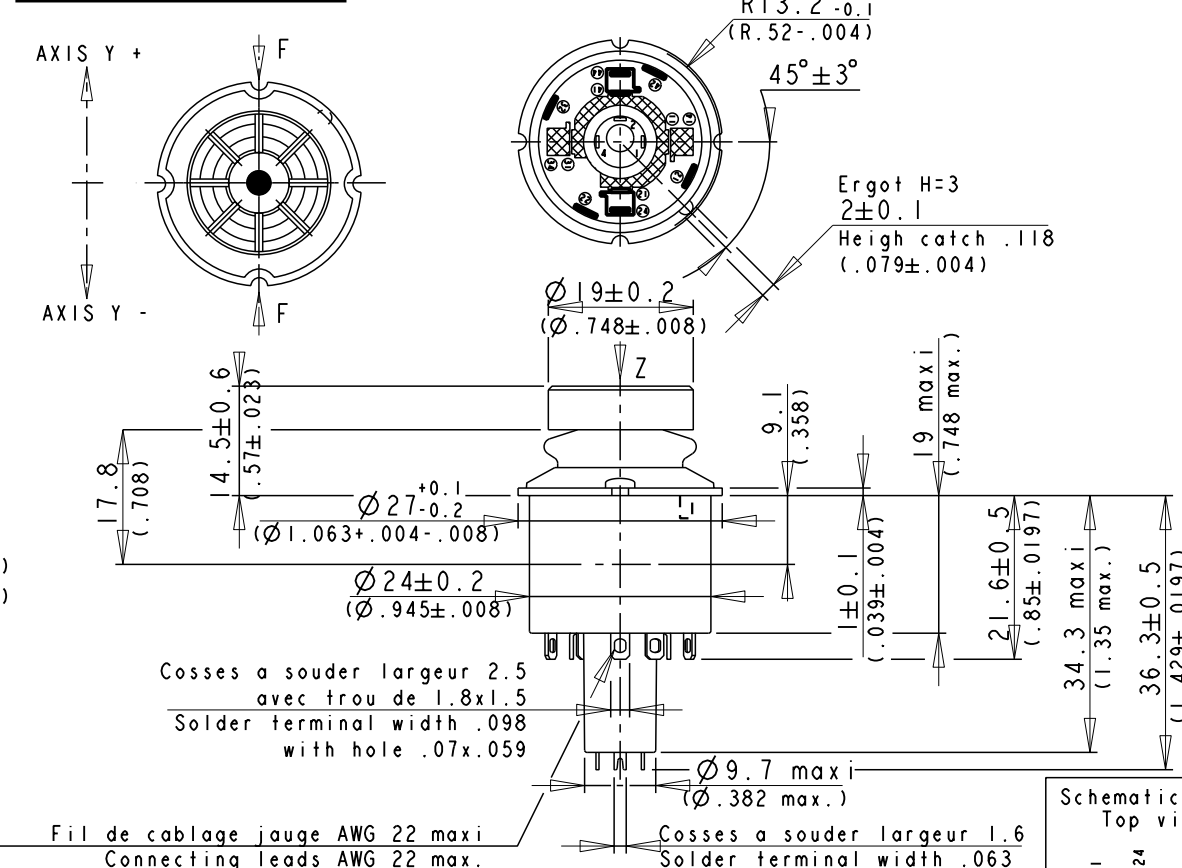


**FICHE TECHNIQUE DATA SHEET**

CROUZET Type : 83-452-721

TRIM TACTILE INVERSEUR A VALIDATION CENTRALE  
2 DIRECTIONS AXE Y  
TWO WAY BUTTON WITH TACTILE EFFECT (AXIS Y)  
+ PUSH BUTTON - CHANGE OVER

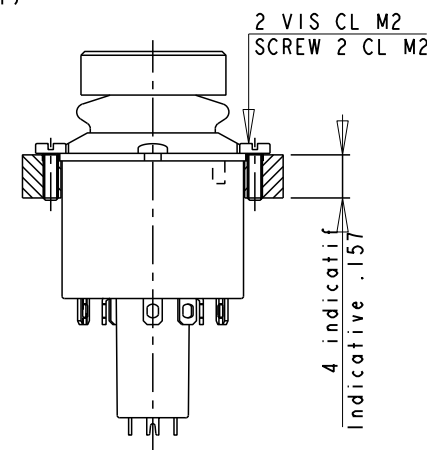
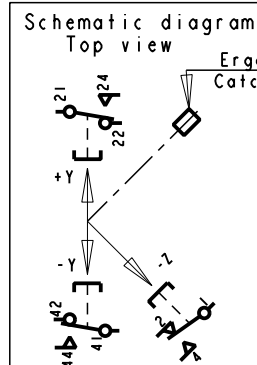
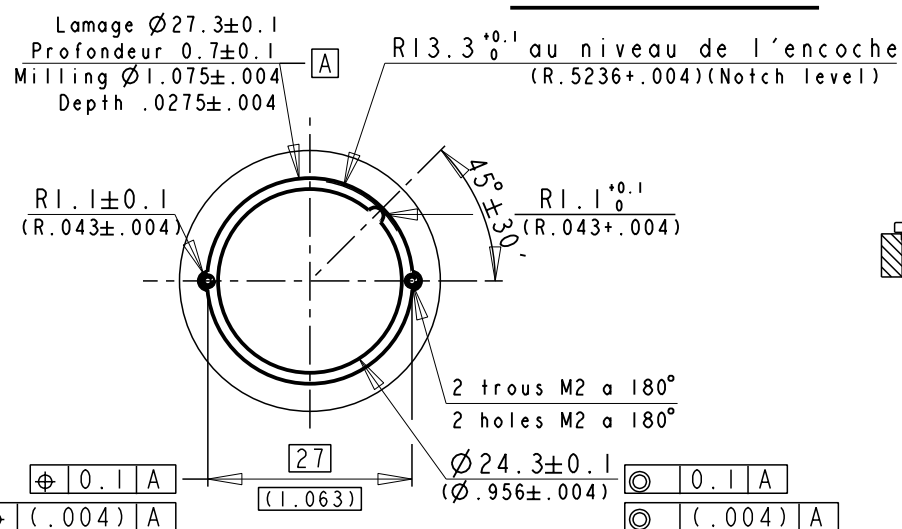
**VUE DE DESSUS TOP VIEW**



Fil de cablage jauge AWG 22 maxi  
Connecting leads AWG 22 max.

USINAGE PLATINE  
PLATE MACHINING

**FIXATION PAR VIS  
SCREW MOUNTING**



Div: CT  
Dep: CA

C	CT1578; LANCEMENT DU PRODUIT	JUNILLON 19-MAR-01	D	CTP 6051 : MODIFS DIVERSES D'ORTHOGRAPHE ET DE TRADUCTION	JLB 19 MAI 2005
	Etabli par Design by	GUILHOT	03-2000	CODE ENTREPRISE : NATO CODE : FAOX2	
	Verifie par Approved by	DOREY	03-2000	ECHELLE SCALE	
	Visa qualite Visa quality			CODE ft: A3	
				<b>FT83452721</b>	<b>D</b>