



# CA-901BT CM WIRELESS SPEAKER POD

## Congratulations

Your CA-901BT speaker contains Bluetooth® technology, allowing you to wirelessly play music from nearly any Bluetooth enabled device. Now you can enter the room, select music to play on most smartphones, tablets, or laptops, and control your listening enjoyment from the comfort of your lap. From your device, you can easily control and change music tracks, playlists, adjust volume up or down, or even listen to podcasts, or many other audio applications available on your device.

## Box contents

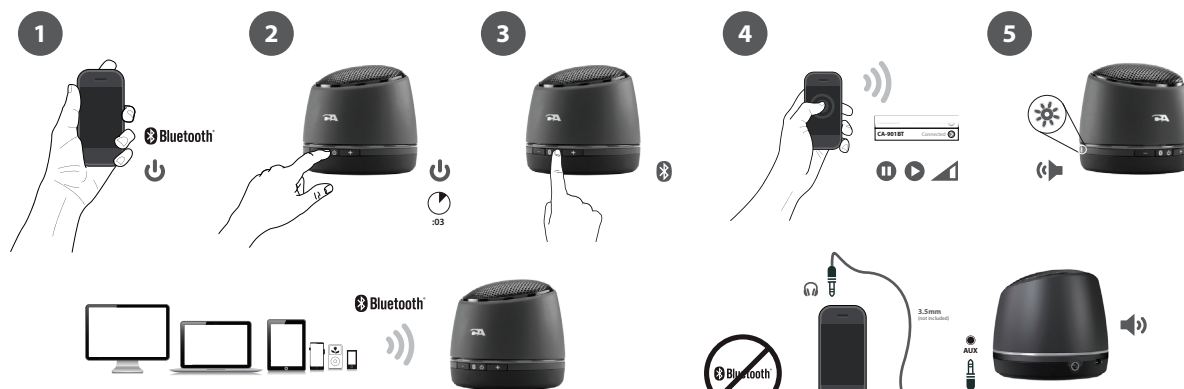
Wireless speaker pod  
Cables  
Owner's Guide with connection diagram

## Caution

- Read Instructions Carefully – All safety and operating instructions should be read before this device is operated.
- Heat – Keep speakers out of extreme heat and away from sources producing extreme heat, such as, space heaters, radiators, stoves and other devices emitting heat.
- Water and Moisture – Keep speakers out of the rain and humid conditions to avoid electric shock. Keep speakers away from water, such as, sinks, bathtubs, swimming pools, washing machines, tubs of water, etc. in order to avoid electric shock. Keep water from dripping on the device, do not put objects containing water, such as vases on top of the device, and do not put the device near standing water.
- Cleaning – Use a dry cloth for cleaning. Do not wipe any part of the system with cleaning solvents, such as, furniture wax, bleach, benzene, or ammonia.

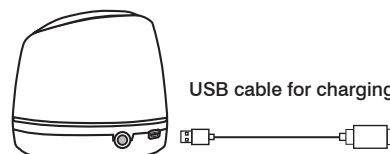
## Speaker connection

Please read the step by step instructions along with the diagrams provided.



### Charging

- Turn off the sample.
- Plug in the included USB charging cable for charging (mini-USB plug to speaker and standard USB plug to USB power source).
- LED will be red while the speaker is charging.  
(LED will be purple while the speaker is powered on and charging)



### Pairing with the speakers the first time

Before you start, please fully charge up the CA-901BT speaker.

Ensure the Bluetooth capability of your source device is turned on and ready to discover new items. If needed, see your device's instructions to add or setup a Bluetooth device.

When you first turn on the CA-901BT speaker system, the Bluetooth functionality is not engaged. Below steps are the guidelines for you to connect with CA-901BT speaker. To wirelessly connect with the Bluetooth function of your speakers:

1. Make sure the speaker is fully charged up. Switch on the device by pressing & holding the Power / Bluetooth button for 3 seconds, or until you hear an audible melody. The device is now switched on with blue LED light up.
2. Press the Power / Bluetooth button for once to trigger "Bluetooth pairing" mode. You are hear another audible melody and LED will now blink in red and blue alternatively.
3. With your audio source (smartphone, tablet, iPod, etc.), find the Bluetooth device list and look for "CA-901BT." Select it to pair/connect with the speakers.
4. When the device connects, you will hear a short audible beep, the LED will stop blinking and will turn to a solid "on" state.
5. Now you can go to your music applications; start play and enjoy your music.

Turning off your source device will automatically disconnect your speakers. If you plan on not using your speakers again for an hour or more, we recommend you turn off your CA-901BT speakers to save battery until you are ready to listen again.

### Pairing with the speakers after the first time

Once you've successfully paired your speakers, your device will automatically connect with it on successive returns to the room in which they are situated. You will be able to immediately go the audio application of your choice, select your audio tracks, and begin enjoying almost at once.

Power off the speakers by pressing and holding the Power / Bluetooth button for approximately 3 seconds. It will also disconnect from your source device automatically. Turn your speakers back on by pressing and holding the same button for 3 seconds (while your device is still Bluetooth enabled), will allow your device to reconnect within a couple of seconds.

### Disconnecting and pairing with a new device

Ensure the speaker is fully charged up. Switch on the device by pressing & holding the Power / Bluetooth button for 3 seconds, or until you hear an audible melody. The device is now switched on with blue LED lit up.

Repeat step 2 – 5 as with the pairing with the speakers the first time.

### Playing Audio via AUX in jack\*

1. Make sure the speaker is fully charged.
2. Power on the device by pressing and holding the Power / Bluetooth button for about 3 seconds.
3. Plug in a 3.5mm AUX cable into AUX jack.
4. Connect another end of the AUX cable with your secondary audio source.
5. Music will play from the speaker system when you start the playback on the secondary audio source

\* AUX input is prioritized (overrides Bluetooth audio source) whenever a 3.5mm cable is plugged in.

## Trouble shooting

Symptom	Solution
Speaker System Will Not Power On.	Make sure the speaker is charged up.
Speaker Does Not Produce Sound.	Verify the speaker is getting power. Check above steps.
	Verify that all cables and devices are plugged into the correct jacks.
Sound Is Distorted.	Adjust the sound source's master volume control by balancing the volume until it's centered.

## Trouble shooting Bluetooth connections

### Can't connect for the first time

1. Turn off the speaker completely by pressing and holding the Power / Bluetooth button for about 3 seconds and LED turns off.
2. Check your Bluetooth source device and be sure you have found the section that allows you to see nearby Bluetooth products. If you see the CA-901BT on the list, but cannot connect, you may need to try and synch again. To start fresh, with your Bluetooth device, select "Forget this device," to remove the CA-901BT from the list. You may need to turn off the Bluetooth function on your device to fully clear your list.
3. Turn the speakers back on by pressing and holding the Power / Bluetooth button for about 3 seconds, and go into the "pairing mode" by repeating step 2 – 5 as with pairing with the speakers the first time.
4. Return to your source device, and re-enable the Bluetooth function. Look for the CA-901BT speakers to show back up on the list.
5. Select these speakers on your screen, and listen for the audible beep to confirm pairing.

### Can't connect when returning

1. If, for some reason, the CA-901BT does not automatically connect back with your Bluetooth-enabled device, you may need to physically go into your device's Bluetooth settings and select "CA-901BT" to reconnect.
2. If the above step does not work, see steps 1-5 in the "Can't connect for the first time" section above.

### Audio is choppy, has erratic static, or keeps disconnecting

1. Be sure to check your room environment. Today's Bluetooth technology has a designed limit of approximately 30 feet, line of sight. This generally means your best results will be limit your source device and speakers to the same room. Extremely large rooms, or rooms with a lot of wireless electronics, routers, etc, may affect the quality of sound, connection, or connection consistency.
2. Check for obstructions, walls or other objects that might impede the Bluetooth signal.
3. Try returning to the source device to a closer proximity with your speakers.

### Still can't connect

1. Be sure to check your room environment. Today's Bluetooth technology has a designed limit of approximately 30 feet, line of sight. This generally means your best results will limit your source device and speakers to the same room. Extremely large rooms, or rooms with lots of wireless electronics, wi-fi routers, radio transmitters, etc, may affect your ability to pair.
2. Check to see if any other devices are already connected to the CA-901BT. The speakers can only pair with one device at a time. If you need to unpair, choose "Forget this device" from your source. Then follow the setup pairing options as detailed above.
3. Check the battery life of your source device and charge if necessary. Most devices operate best when charged above 20% minimum battery level.
4. Use a sharp pin to press the reset button on the bottom of the CA-901BT speaker. And repeat step 1 – 5 shown in the first time pairing instruction.

### Incoming phone calls

When connecting to some Android smartphones (depends on OS version), incoming voice audio may go to this speaker. To ensure you can answer the call through your phone only, uncheck the "Phone Audio" option of the device name under Bluetooth settings. Or you can switch to phone audio manually, when there is an incoming call.

## Additional support

### Online...

The latest updated video tutorials, FAQ, and product feature specifications are available online 24/7

### In person...

Technical support is also available at 360-883-0333, M-F 8-5 West Coast time.

### FCC Information

This equipment has been tested and found to comply with the limits for a Class B digital device, pursuant to Part 15 of the FCC Rules. These limits are designed to provide reasonable protection against harmful interference in a residential installation. This equipment generates, uses and can radiate radio frequency energy and, if not installed and used in accordance with the instructions, may cause harmful interference to radio communications. However, there is no guarantee that interference will not occur in a particular installation. If this equipment does cause harmful interference to radio or television reception, which can be determined by turning the equipment off and on, the user is encouraged to try to correct the interference by one or more of the following measures:

- Reorient or relocate the receiving antenna.
- Increase the separation between the equipment and receiver.
- Connect the equipment into an outlet on a circuit different from that to which the receiver is connected.
- Consult the dealer or an experienced radio/TV technician for help.

Warning: Changes or modifications to this unit not expressly approved by the party responsible for compliance could void the user's authority to operate the equipment.

This device complies with Part 15 of the FCC Rules. Operation is subject to the following two conditions: (1) this device may not cause harmful interference, and (2) this device must accept any interference received, including interference that may cause undesired operation.