


IMPORTANT SAFETY INSTRUCTIONS:

1. Read these instructions - All the safety and operating instructions should be read before this product is operated.
2. Keep these instructions- The safety and operating instructions should be retained for future reference.
3. Heed all warnings - All warnings on the appliance and in the operating instructions should be adhered to.
4. Follow all instructions - All operating and use instructions should be followed.
5. Do not use this apparatus near water -The appliance should not be used near water or moisture - for example, in a wet basement or near a swimming pool, and the like.
6. Clean only with dry cloth.
7. Do not block any ventilation openings. Install in accordance with the manufacture-s instructions.
8. Do not install near any heat sources such as radiators, heat registers, stoves, or other apparatus (including amplifiers) that produce heat.
9. Do not defeat the safety purpose of the polarized or grounding plug. A polarized plug has two blades with one wider than the other. A grounding plug has two blades and a third grounding prong. The wide blade or the third prong is provided for your safety. If the provided plug does not fit into your outlet, consult an electrician for replacement of the obsolete outlet.
10. Protect the power cord from being walked on or pinched particularly at the plugs, convenience receptacles, and at the point where they exit from the apparatus.
11. Only use attachments/accessories specified by the manufacturer.
12. Use only with the cart, stand, tripod, bracket, or table specified by the manufacturer, or sold with the apparatus. When a cart or rack is used, use caution when moving the cart/apparatus combination to avoid injury from tip-over.
13. Unplug the apparatus during lightning storms or when unused for long periods of time.
14. Refer all servicing to qualified personnel. Servicing is required when the apparatus has been damaged in any way, such as power supply cord or plug is damaged, liquid has been spilled or objects have fallen into the apparatus has been exposed to rain or moisture, does not operate normally, or has been dropped.
15. CAUTION: These servicing instructions are for use by qualified service personnel only.
To reduce the risk of electric shock, do not perform any servicing other than that contained in the operating instructions unless you are qualified to do so.



16. This lightning flash with arrowhead symbol within an equilateral triangle is intended to alert the user to the presence of non-insulated "dangerous voltage" within the product's enclosure that may be of sufficient magnitude to constitute a risk of electric shock.
- Warning: To reduce the risk of electric shock, do not remove cover (or back) as there are no user-serviceable parts inside. Refer servicing to qualified personnel.
- The exclamation point within an equilateral triangle is intended to alert the user to the presence of important operating and maintenance instructions in the literature accompanying the appliance.
17.  This equipment is a Class II or double insulated electrical appliance. It has been designed in such a way that it does not require a safety connection to electrical earth.
18. Do not install this equipment in a confined or building-in space such as a book case or similar unit, and remain a well ventilation conditions at open site. The ventilation should not be impeded by covering the ventilation openings with items such as newspaper, table-cloths, curtains etc.
19. WARNING: To reduce the risk of fire or electric shock, do not expose this apparatus to rain or moisture. The apparatus shall not be exposed to dripping or splashing and that objects filled with liquids, such as vases, shall not be placed on apparatus.
20. WARNING: The battery (battery or batteries or battery pack) shall not be exposed to excessive heat such as sunshine, fire or the like.
21. WARNING: The mains plug is used as disconnect device, the disconnect device shall remain readily operable.
22. WARNING: Please refer the information on exterior bottom enclosure for electrical and safety information before installing or operating the apparatus.



PS-2370 WIRELESS STEREO SPEAKER

Congratulations

Your PS-2370 speaker contains Bluetooth® technology, allowing you to wirelessly play music from nearly any Bluetooth enabled device. Now you can enter the room, select music to play on most smartphones, tablets, or laptops, and control your listening enjoyment from the comfort of your lap. From your device, you can easily control and change music tracks, playlists, adjust volume up or down, or even listen to podcasts, or many other audio applications available on your device.

Box contents

Wireless stereo speaker
Cables
Carry pouch
Owner's Guide with connection diagram

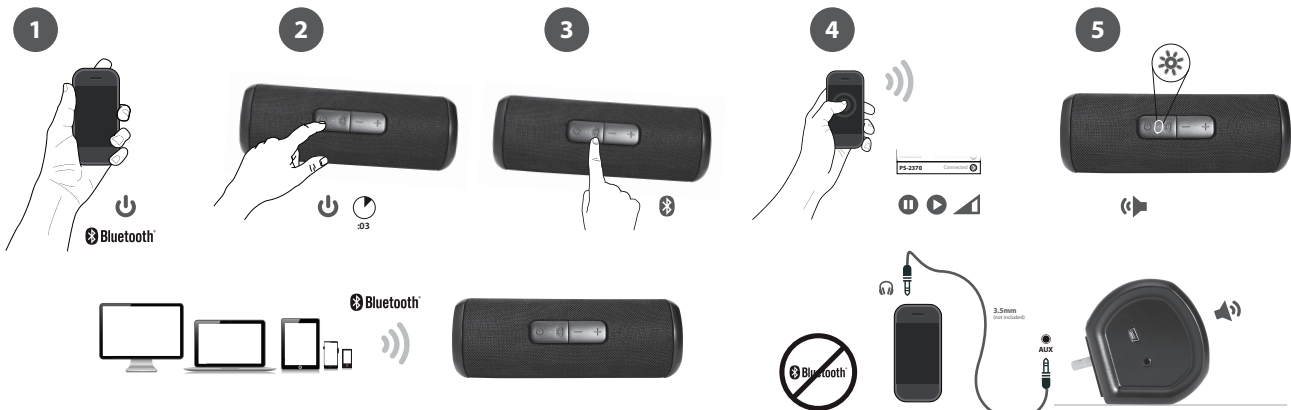


Caution

- Read Instructions Carefully – All safety and operating instructions should be read before this device is operated.
- Heat – Keep speakers out of extreme heat and away from sources producing extreme heat, such as, space heaters, radiators, stoves and other devices emitting heat.
- Water and Moisture – Keep speakers out of the rain and humid conditions to avoid electric shock. Keep speakers away from water, such as, sinks, bathtubs, swimming pools, washing machines, tubs of water, etc. in order to avoid electric shock. Keep water from dripping on the device, do not put objects containing water, such as vases on top of the device, and do not put the device near standing water.
- Cleaning – Use a dry cloth for cleaning. Do not wipe any part of the system with cleaning solvents, such as, furniture wax, bleach, benzene, or ammonia.

Speaker connection

Please read the step by step instructions along with the diagrams provided.



Charging

- Turn off the speaker.
- Plug in the included USB charging cable for charging (micro-USB plug to speaker and standard USB plug to USB power source), or fold down the built-in wall prongs and plug the speaker into an available wall socket.
- LED will be red while the speaker is charging.
(LED will be purple while the speaker is powered on and charging)



110V Wall outlet for charging



USB cable for charging



Pairing with the speakers for the first time

Before you start, please fully charge up the PS-2370 speaker.

Ensure the Bluetooth capability of your source device is turned on and ready to discover new items. If needed, see your device's instructions to add or setup a Bluetooth device. When you first turn on the PS-2370 speaker system, the Bluetooth functionality is not engaged. Below steps are the guidelines for you to connect with PS-2370 speaker.

To wirelessly connect with the Bluetooth function of your speakers:

1. Make sure the speaker is fully charged up. Switch on the device by pressing & holding the power button for 3 seconds, or until you hear an audible melody. The device is now switched on with blue LED light up.
2. Pressing and holding the Bluetooth button for 3 seconds to trigger "Bluetooth pairing" mode. You will hear another audible melody and LED will now blink in red and blue alternatively.
3. With your audio source (smartphone, tablet, iPod, etc.), find the Bluetooth device list and look for "PS-2370." Select it to pair/connect with the speakers.
4. When the device connects, you will hear a short audible notification, the LED will stop blinking and will turn to a solid "blue" state.
5. Now you can go to your music applications; press play and enjoy your music.

Turning off your source device will automatically disconnect your speakers. If you plan on not using your speakers again for an hour or more, we recommend you turn off your PS-2370 speakers to save battery until you are ready to listen again.

Pairing with the speakers after the first time

Once you've successfully paired your speakers, your device will automatically connect with it on successive returns to the room in which they are situated. You will be able to immediately go to the audio application of your choice, select your audio tracks, and begin enjoying almost at once.

Powering off the speakers by pressing and holding the power button for approximately 3 seconds will disconnect from your source device automatically. Turn your speakers back on by pressing and holding the power button for 3 seconds. While your device is still Bluetooth-enabled, it will allow your device to reconnect within just a couple of seconds, without any further effort.

Disconnecting and pairing with a new device

Ensure the speaker is fully charged up. Switch on the device by pressing & holding the power button for 3 seconds, or until you hear an audible melody.

The device is now switched on with blue LED light up.

Repeat step 2 – 5 as with the first time you connected with the speaker. .

Playing Audio via AUX in jack*

1. Make sure the speaker is fully charged.
2. Power on the device by pressing and holding the power button for about 3 seconds.
3. Plug in a 3.5mm AUX cable into AUX jack.
4. Connect another end of the AUX cable with your secondary audio source.
5. Music will play from the speaker system when you start the playback on the secondary audio source

* When you want to play through AUX in; please make sure the Bluetooth source was stopped playback or disconnected.

Trouble shooting

Symptom	Solution
Speaker System Will Not Power	Make sure the speaker is charged up.
Speaker Does Not Produce Sound.	Verify the speaker is getting power. Check above steps.
	Verify that all cables are plugged into the correct jacks or that the Bluetooth is paired correctly.
Sound Is Distorted.	Adjust the sound source's master volume control by balancing the volume until it's centered.

Trouble shooting Bluetooth connections

Can't connect for the first time

1. Turn off the speaker completely by pressing and holding the power button for around 3 seconds until LED turns off.
2. Check your Bluetooth source device and be sure you have found the section that allows you to see nearby Bluetooth products. If you see the PS-2370 on the list, but cannot connect, you may need to try and sync again. To start fresh, with your Bluetooth device, select "Forget this device," to remove the PS-2370 from the list. You may need to turn off the Bluetooth function on your device to fully clear your list.
3. Turn the speakers back on by pressing and holding the power button for around 3 seconds. And go into the "pairing mode" by repeat step 2 – 5 as with the first time you connected with the speaker.
4. Return to your source device, and re-enable the Bluetooth function. Look for the PS-2370 speakers to show back up on the list.
5. Select these speakers on your screen, and listen for the audible beep to confirm pairing.

Can't connect when returning

1. If, for some reason, the PS-2370 does not automatically connect back with your Bluetooth-enabled device, you may need to physically go into your device's Bluetooth settings and select "PS-2370" to reconnect.
2. If the above step does not work, see steps 1-5 in the "Can't connect for the first time" section above.

Audio is choppy, has erratic static, or keeps disconnecting

1. Be sure to check your room environment. Today's Bluetooth technology has a designed limit of approximately 30 feet, line of sight. This generally means your best results will be limiting your source device and speakers to the same room. Extremely large rooms, or rooms with a lot of wireless electronics, routers, etc, may affect the quality of sound, connection, or connection consistency.
2. Check for obstructions, walls or other objects that might impede the Bluetooth signal.
3. Try returning to the source device to a closer proximity with your speakers.

Still can't connect

1. Be sure to check your room environment. Today's Bluetooth technology has a designed limit of approximately 30 feet, line of sight. This generally means your best results will be limiting your source device and speakers to the same room. Extremely large rooms, or rooms with lots of wireless electronics, wi-fi routers, radio transmitters, etc, may affect your ability to pair.
2. Check to see if any other devices are already connected to the PS-2370. The speakers can only pair with one device at a time. If you need to unpair, choose "Forget this device" from your source. Then follow the setup pairing options as detailed above.
3. Check the battery life of your source device and charge if necessary. Most devices operate best when charged above 20% minimum battery level.

Incoming phone calls

Answering phone call by pressing Bluetooth button Once.

Additional support

Online

The latest updated video tutorials, FAQ, and product feature specifications are available online 24/7
<http://cyberacoustics.com>

In person

Technical support is also available at 360-883-0333, M-F 8-5 West Coast time.

FCC STATEMENT

1. This device complies with Part 15 of the FCC Rules. Operation is subject to the following two conditions:

- (1) This device may not cause harmful interference.
- (2) This device must accept any interference received, including interference that may cause undesired operation.

2. Changes or modifications not expressly approved by the party responsible for compliance could void the user's authority to operate the equipment.

NOTE: This equipment has been tested and found to comply with the limits for a Class B digital device, pursuant to Part 15 of the FCC Rules. These limits are designed to provide reasonable protection against harmful interference in a residential installation.

This equipment generates uses and can radiate radio frequency energy and, if not installed and used in accordance with the instructions, may cause harmful interference to radio communications. However, there is no guarantee that interference will not occur in a particular installation. If this equipment does cause harmful interference to radio or television reception, which can be determined by turning the equipment off and on, the user is encouraged to try to correct the interference by one or more of the following measures:

Reorient or relocate the receiving antenna.

Increase the separation between the equipment and receiver.

Connect the equipment into an outlet on a circuit different from that to which the receiver is connected.

Consult the dealer or an experienced radio/TV technician for help.

RF warning statement:

The device has been evaluated to meet general RF exposure requirement. The device can be used in portable exposure condition without restriction.