

Read this before purchasing the product. This manual contains important information that you should read carefully before using the product. It contains instructions on how to use the product safely and effectively.

CONTENTS
1. Introduction
2. Safety
3. Features
4. Package Content
5. Installation
6. Battery Operation
7. Speakerphone Operation
8. Button Functions and Operation
9. Care and Maintenance
10. Troubleshooting
11. Customer Service / Contact Us
12. FCC/CEC

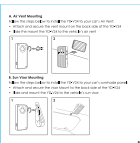
DISCLAIMER
The manufacturer is not responsible for any damage or injury caused by the use of the product. The user must read the manual carefully and follow the instructions.

WARRANTY / LIABILITIES
The manufacturer warrants the product against defects in materials and workmanship for a period of one year from the date of purchase.

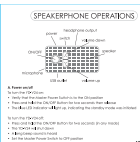
PACKAGE CONTENT
The package contains the following items:
- 1 x WIMPUS
- 1 x User Manual
- 1 x Charging Cable
- 1 x Headset



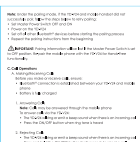
BATTERY OPERATIONS
The device is powered by a rechargeable battery. To ensure optimal performance, please follow the following instructions:
- Charge the battery fully before use.
- Avoid using the device while charging.
- Store the device in a cool, dry place.



OPERATIONS
This section provides detailed instructions on how to use the device's various features, including making calls, sending messages, and using the speakerphone.



OPERATIONS (continued)
This section continues the instructions for using the device, covering advanced features and settings.



OPERATIONS (continued)
This section provides information on how to care for and maintain the device to ensure its longevity.

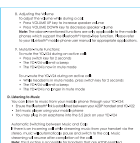


Table with 4 columns: Button, Function, Description, and Icon. It lists various buttons on the device and their corresponding functions.

CARE AND MAINTENANCE
To keep your device in good condition, please follow these care and maintenance instructions:
- Clean the device regularly with a soft, dry cloth.
- Avoid using harsh chemicals or abrasive materials.
- Store the device in a protective case when not in use.

TROUBLE SHOOTING
If you are experiencing any issues with your device, please refer to the following troubleshooting steps:
- Check the battery level and ensure it is fully charged.
- Verify that the device is powered on.
- Restart the device.

CUSTOMER SERVICE / CONTACT US
For more information or assistance, please contact our customer service team.
- Phone: 1-800-123-4567
- Email: support@yada.com
- Website: www.yada.com

FCC/CEC
This device complies with the Federal Communications Commission (FCC) and Canadian Council of Ministers of the Environment (CEC) regulations.

Additional regulatory information and compliance details.

Additional regulatory information and compliance details.

Additional regulatory information and compliance details.