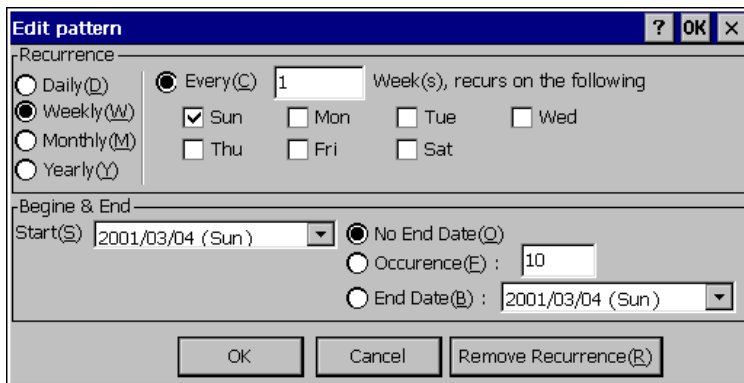
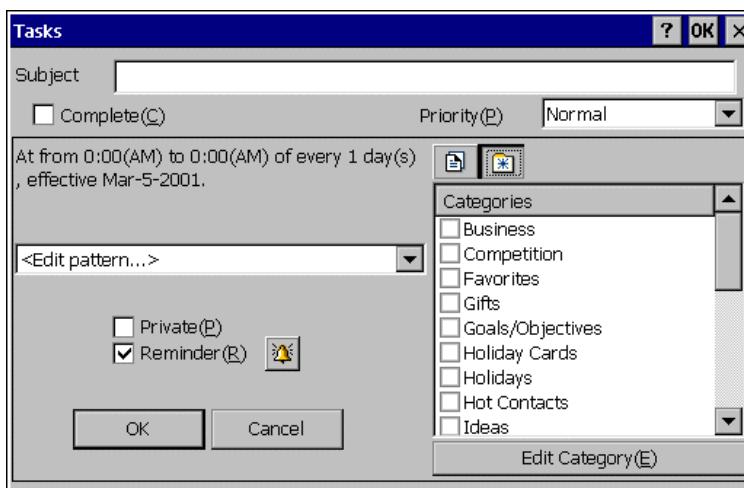


6. If you need to set recurrences, tap the arrow in the Recurrence selection box, and select an item from the list. If the item you want is not listed, tap **Edit pattern**, and the Edit pattern dialog box appears.



7. Then, when you return to the Tasks dialog box, it will look a little different than when you first saw it, as show below.




8. Finally, if you wish this task to be private, tap the box next to **Private** to make a check, and if you wish to attach a reminder to this task, check the box next to **Reminder**.
9. Tap **OK** to save settings.
If you wish to exit without saving input data, tap **Cancel**.

2) Editing a task

1. Double-tap the task you wish to edit, or tap **Edit Item** on the **Edit** menu.
2. Modify the contents of the task.
3. Check to see if the modified contents are correct, then tap **OK**.
If you wish to exit without saving the modified contents, tap **Cancel**.

3) Deleting a task


After selecting the task you wish to delete, tap **Delete Item** on the **Edit** menu or tap the **Delete** button () , and the selected item is deleted.

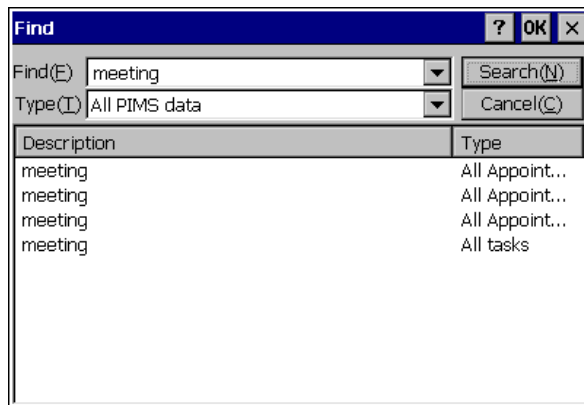
4) Deleting a completed task

To delete completed tasks, tap **Delete Completed Task** on the **Edit** menu and all completed tasks are erased.

5) Finding tasks

You can use this feature to find a specific task.

1. Tap **Find** on the **Tool** menu, or tap the **Find** icon ().
The Find dialog box appears.



2. Input the data needed in searching in the given box next to **Find**, and select an item from **Type** if needed.
3. Tap **Search**.

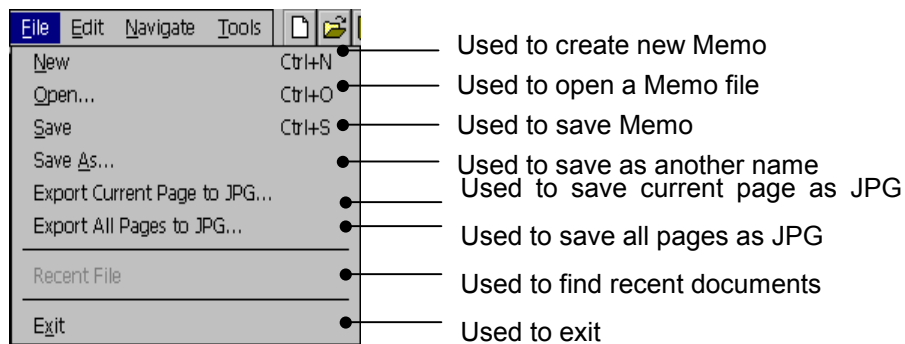
IV. Memo

(1) Features

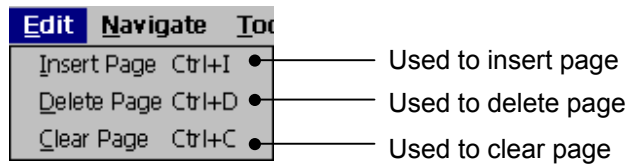
The memo program saves contents that you have handwritten using the stylus. The number of memos that can be stored will vary depending on the memory.

1) Functions of each menu

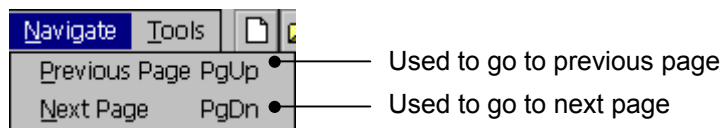
1. File



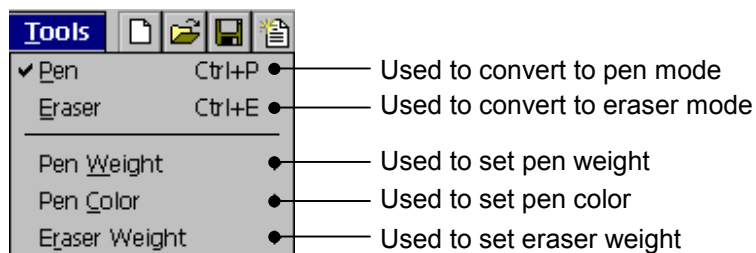
2. Edit



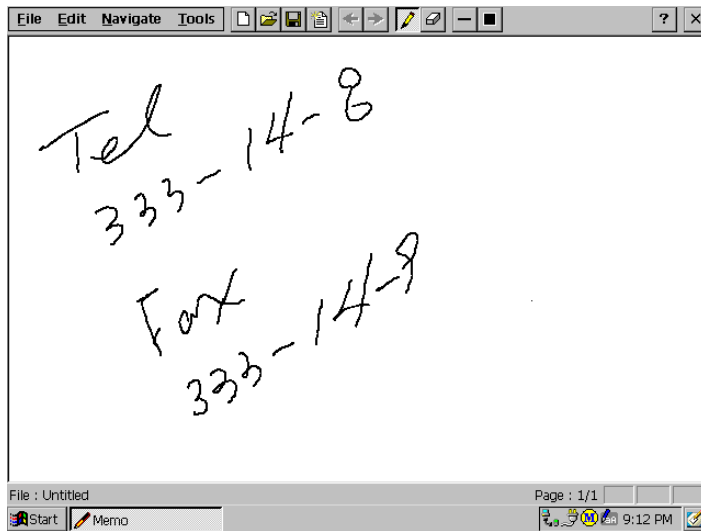
3. Navigate



4. Tools





2) Memo Screen




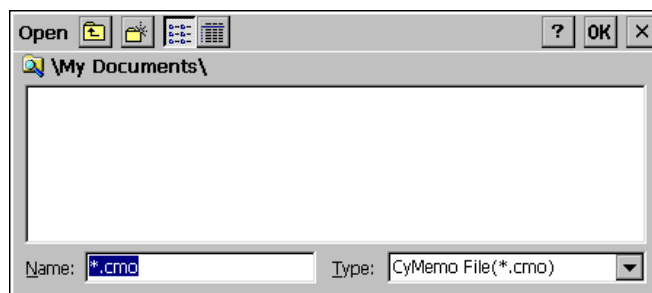
(2) How to use Memo

1) Creating a New Memo

1. Tap **New** on the **File** menu, or tap the **New Memo** button () , and the New Memo window appears.
2. Draw in what you want using the stylus.
3. Tap **Save** on the **File** menu or tap the **Save** button () to save the Memo.

2) Opening an existing Memo

1. Tap **Open** on the **File** menu or tap the **Open** button () . The Open dialog box appears.



2. Tap the folder which holds the file you wish to open and double-tap the file.

3) Saving a Memo

1. Input the contents you want in Memo.
2. Select **Save** or **Save as** on the **File** menu or tap **Save** to save it.

4) Saving a Memo as JPG file



As a Memo, saved as CMO file, is readable on only the Memo program, and not readable on other programs, it can be readable on other programs by saving it as JPG file.

1. Input the contents you want in Memo.
2. Select **Export Current Page to JPG** or **Export All Pages to JPG** on the **File** menu.

5) Selecting Pen or Eraser and setting Preferences

- Select **Pen** or **Eraser** on the **Tools** menu or select the **Pen** or **Eraser** icons.
- In order to set up Preferences for Pen or Eraser, select **Pen weight**, **Pen Color** or **Eraser Weight** on the **Tools** menu.

V. Calculator

(1) Features

Your PC-EPhone's calculator consists largely of a calculator type selection, an top selection, equation input, outcome, numeral keys, function keys, and operators. The convertible has an additional panes for unit selection.

Calculator Type selection	Enables you to select the type of calculator (Standard, Scientific, Convertible).
Keep on Top selection	Enables you to keep the calculator screen on top of all other programs.
Equation input	Displays the equation to be calculated.
Outcome	Displays the outcome of the operations.
Numeral keys	Enables you to input the numbers used in the equation.
Function keys	Enables you to edit the equation.
Operators	Enables you to insert operators in the equation.
Unit selection	When converting units, enables you to select the base unit.

(2) How to use Calculator

1) Changing Calculator types

Tap the arrow of the selection screen on the upper left hand corner, and a drop-down list of calculator types is displayed. Select the desired calculator (Standard, Scientific, Convertible).



2) Keeping the calculator on top

In order to keep the calculator displayed on top of all other programs, tap **Top** on the second selection window. To cancel this function, tap **Hide**.



3) Standard Calculator

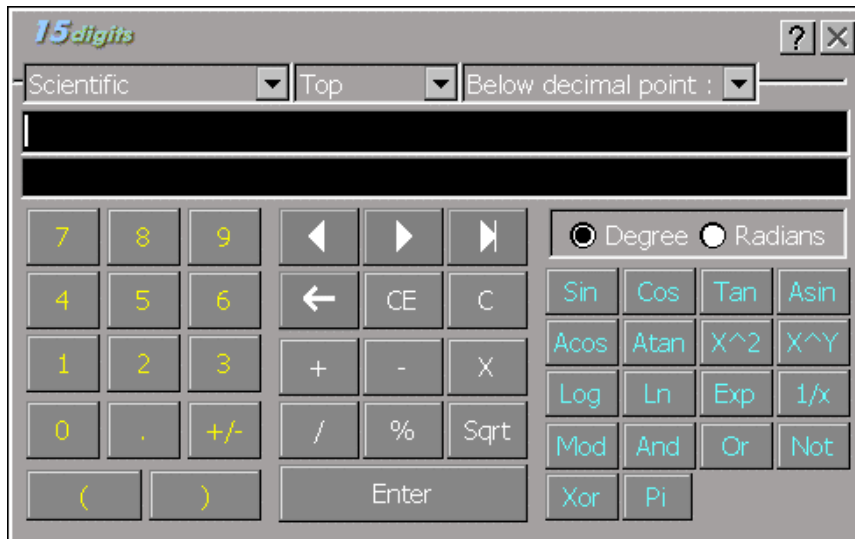
Select **Standard** on the calculator menu.



4) Scientific Calculator

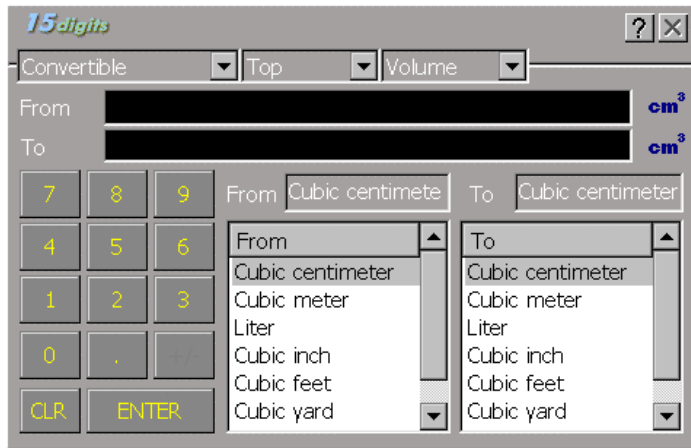
Select **Scientific** on the calculator menu.

Use the keys on the scientific calculator as you would on the standard calculator.



5) Convertible Calculator

Select **Convertible** on the calculator menu.



1. First, select the weight or measure you want to convert (Length, Weight, Volume, Size, Temperature).



When you select a Weight or Measure, the two lists below display units corresponding to the selected weight or measure.

2. Select the unit to convert and the unit to convert into.

When you select a unit, it is displayed in the windows above the lists and next to the **From** and **To** panes.

3. Input the quantity to be converted.
4. Tap **Enter**.



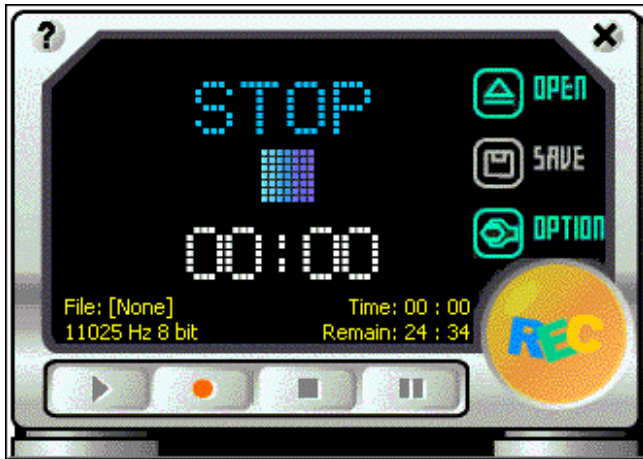
The calculator program can perform equations within 15 digits.


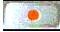





VI. Recorder

Recorder is used to record simple sounds or to play back existing Wave files.

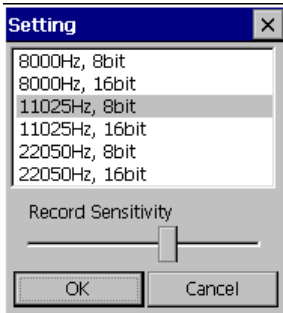
(1) Features

1) Record/Play Status display



- ▶ **Play Button** 
Used to Playback recorded contents or common wave files.
- ▶ **Record Button** 
Used in recording.
- ▶ **Stop Button** 
Used to stop playback or recording.
- ▶ **Open File Button** 
Used to open a file for playback.
- ▶ **Save File Button** 
Used to save the recorded file as a different name.
- ▶ **Recording Settings Button** 
Used to change recording settings.
- ▶ **Exit Button** 
Used to close the recorder program.

2) Recording Settings Screen



In Settings, you can set the Sampling rate and bit, which determine the quality of the recording.

- ▶ **Quality Selection Pane**

Displays the available **Sampling rates** and **bits**, and is used when selecting the desired quality.

- ▶ **Record Sensitivity**

Used to adjust sensitivity while recording.

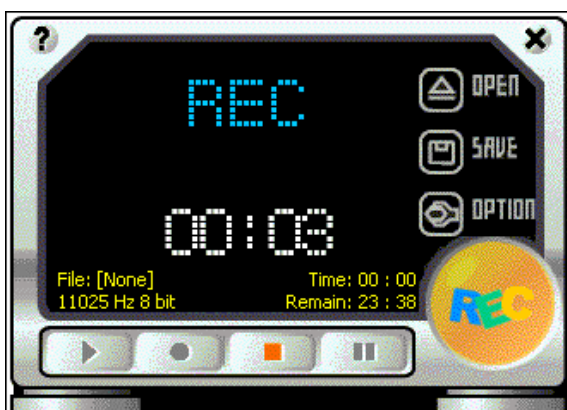
(2) How to use the Recorder

1) Running the Program

To run the Recorder Program, press the **Record** button on the right side of your PC-EPhone or tap the **Record** icon.

2) Recording

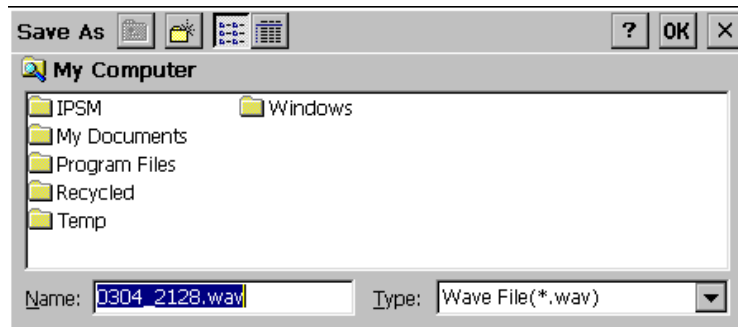
Tap the **Record** icon on the bottom of the **Record** screen or press the **Record** button on the right side of your PC-EPhone once more with the recorder program running.



To stop recording, tap the **Stop** button on the bottom of the Recorder or press the **record** button on the right side of your PC-EPhone. On suspension, the recorded contents are saved as a temporary file. This temporary file is saved **Record.wav** form in **My Computer\Temp** Folder.

3) Saving recorded file as another name

1. Tap **SAVE** right after you have completed recording. The Save as dialog box appears.



2. Select the location you want to save at in the browser window and input the file name in the file name input box.
3. Tap **OK**. However, if you do not want to save, tap **X (Exit)**.

4) Opening files for playback

To recall prerecorded files or common WAV files,

1. Tap the **OPEN** button.
The Open dialog box appears.
2. Select the file you wish to play back from the browser window, then tap **OK**.
If you do not want playback, tap **X (Exit)**.

5) Playing Back

To play back the contents you have just recorded or a selected file, follow these steps.

Just after recording, tap the **Play** button to play back right away.

To play a file you have recorded before or a common wave file,

- ▶ Select the file to be played back following the steps in “4) Opening files for playback” and tap **Play**. When the playback time of the file ends, playback is suspended automatically.
- ▶ To stop in the middle of playback, tap **Stop**.
- ▶ To pause in the middle of playback, tap **Pause**.

6) Pausing

To pause in the middle of playback or recording, tap **Pause**.

7) Selecting recording quality

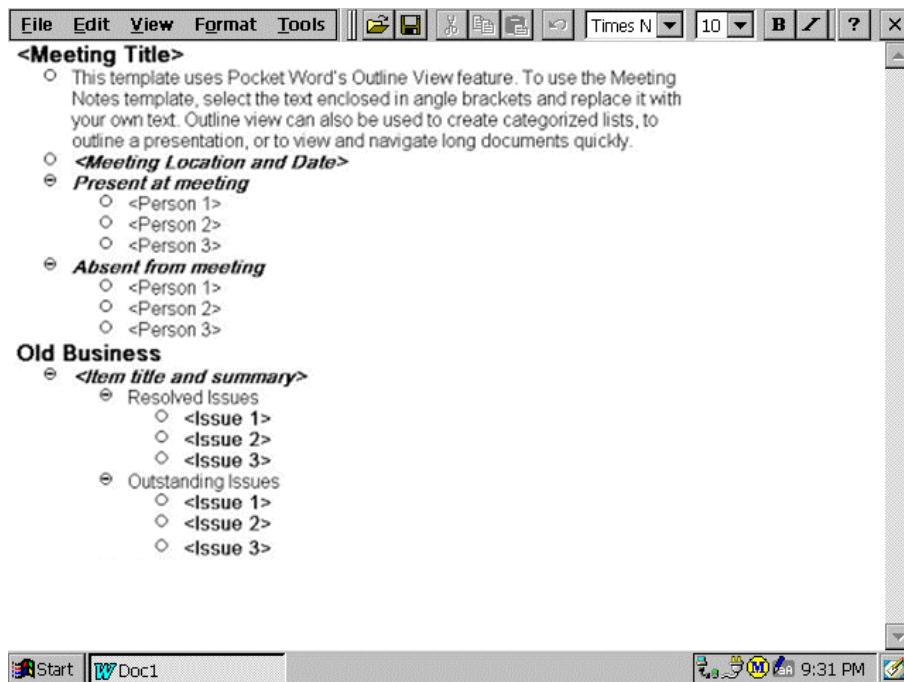
Recording quality is directly associated with available recording time. High values of Sampling rates(KHz units) and bits require that much more memories, therefore

shortening the time available for recording. Therefore, change the settings after checking the current memory status.

1. Tap **OPTION**. The Setting dialog box appears.
2. Select the desired recording quality.
3. Tap **OK**.
4. Check to see if the selected recording quality is displayed on the recording quality window.

VII. Microsoft Pocket Word

As you would use Microsoft Word on your desktop PC, you can create and edit documents(.pwd) and templates(.pwt) in Pocket Word. First, place the cursor in the document window, and start by selecting **Outline or Normal** on the **View** menu. Pocket Word also provides a Spelling Checker feature and enables you to edit texts using the menu or commands. You can also access international characters or symbols for currencies on the **Tool** menu. Text(.txt) files remove all the formats, whereas rft(.rtf) files keep the formats.



- 1) Creating a new Document
 1. Tap **New** on the **File** menu, then tap **Document from Template**.
 2. Select a template such as Meeting Notes, then tap **OK**.
 3. Tap **Save** on the **File** menu.
 4. Input the file name, then tap **OK**.
 5. Change the template contents.



To view the document in a larger size, tap **Full Screen** on the **View** menu.

CHAPTER 8

ACCESSORIES

CYBERBANK provides you with various accessories to help you use your PC-EPhone more conveniently. Aside from the accessories that come with the purchase of your PC-EPhone, you can also purchase extraordinary accessories to endow your PC-EPhone with even more functions.

In addition, you can better use your PC-EPhone's features by expanding memory storage space and connecting to various external devices (including Camera, LAN) using CompactFlash Memory Cards.

This chapter provides you with information on:

- ▶ **CYBERBANK Accessories**
- ▶ **CF (CompactFlash) Memory Card**

I. CYBERBANK Accessories

The accessories illustrated below are provided upon PC-EPhone purchase. Options must be purchased separately from the product.

(1) **Stylus**

Used to input various data and to press the **Reset** button.



(2) **Cradle (Charger/Desktop Connector)**

Connects your PC-EPhone and desktop PC to copy and synchronize various data and also charges the battery.



(3) **AC Adapter**

Used to connect the cradle to an external power source.

(110V, 220V compatible / 50~60KHz)



II. CF (CompactFlash) Memory Card

Your PC-EPhone automatically recognizes and enables the use of various types of CompactFlash Type II cards approved for Window CE use.

As PC-EPhone supports CF card Hot Swaps, you can insert or remove cards when your PC-EPhone is operating. Types of CF cards include Memory cards, LAN cards, and I/O cards.

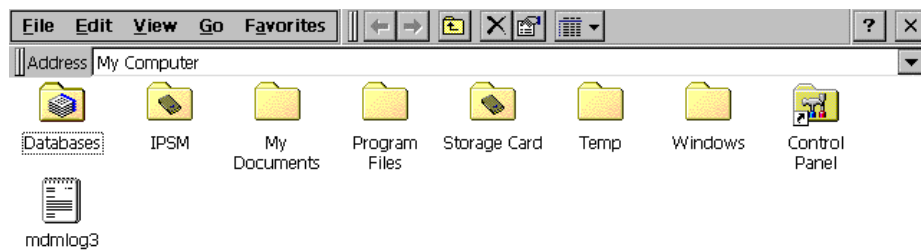


For information on PC-EPhone compatible CF cards, see *PC-EPhone's online customer support site*.

(1) How to install a CF card

To insert a CF card:

1. Remove the CF card slot cover.
2. Place the CF card top facing upward and insert the card's Pinhole edge into the slot. Carefully press the card into the slot until you feel it has clicked into the connector inside the slot.
3. You can now use the card. To check if it was properly installed, tap **My Computer** on the Windows CE screen, then on the My Computer screen. You will find **Storage Card**.





If the CF card does not go in smoothly when inserting it, check if the correct side is facing up and attempt to insert again. Do not use excessive force.

(2) Storing the CF Card after removal

To store the CF Card after removal you should:

1. Slowly remove the CF card from the card slot.
2. Close the cover.
3. Keep the card in a closed case to protect it from dust and moisture.



The data stored in the memory card remains as it is even if the card is removed.

(3) Tips for use

- ▶ Some CF cards including the Modem Card and GPS Reception Card consume large amounts of power. To prevent battery drainage, use your PC-EPhone placed in the cradle when using a CF card.
- ▶ When remaining battery power is low, do not attempt to store data in a CF card. Data loss may occur. Either use your PC-EPhone placed in the cradle, or continue working after changing the battery to a fully charged one.
- ▶ Keep CF card that is not in use in a closed case to protect it from dust and moisture.
- ▶ Do not power off your PC-EPhone or remove the CF card while storing data onto a CF card.

CHAPTER 9

TIPS & TROUBLESHOOTING

This chapter contains troubleshooting information that will help you solve problems and difficulties you may encounter while using your PC-EPhone. For answers to ActiveSync and communication related problems, refer to ActiveSync Help or Help provided by your Internet Service Provider (ISP).

The information in this chapter will help you:

- ▶ **Maintaining your PC-EPhone in its Best Condition**
- ▶ **Reset your PC-EPhone**
- ▶ **Backup/Restore Data**
- ▶ **Troubleshoot basic problems with PC-EPhone**
- ▶ **Tips for better using PC-EPhone**
- ▶ **Travel safety of PC-EPhone**

I. Maintaining your PC-EPhone in its Best Condition

- ▶ Touching the PC-EPhone screen with your hand will leave a trace of natural oil that will make the screen difficult to read. To clean the screen, instead of directly spraying glass cleaner on the screen, use a soft cloth sprayed on it.



Be sure to *turn off* your PC-EPhone before cleaning it.

If dirt or water has gotten into your PC-EPhone unit, take it to the nearest dealer to have it repaired. Dirt or water may cause malfunctions.

- ▶ Do not use excessive force when inserting CF Cards.
- ▶ Do not meddle with the cable while synchronizing with your partner PC until synchronization is complete.
- ▶ Be careful not to drop your PC-EPhone and to avoid severe impact. Do not place heavy materials on the LCD screen. Delicate internal components may be damaged.
- ▶ Damage caused by user negligence does not qualify for free services even during the warranty.
- ▶ Radiated interference from other electronic equipment may affect screen and the modem functions. However, removing the source of interference from the PC-EPhone will return the display and modem functions to normal.
- ▶ Your PC-EPhone was designed to operate at temperatures between 0°C to 40°C (32 ~ 104°F). Exposing the device to temperatures outside this range may result in a loss of data. Be especially careful not to leave your PC-EPhone in the extreme temperatures in a car during summer and winter.

II. Reset your PC-EPhone

Your PC-EPhone provides you with the following three ways of restoring. For more detailed information on resetting, refer to the “*Resetting Systems*” section in chapter 3.



When the system does not operate properly, conduct reset in the order of Soft Reset, CDMA Reset, and Hard Reset, if possible.

(1) Soft Reset

A soft reset restarts your PC-EPhone’s operating system and reallocates its RAM.



When you perform a Soft Reset, you will lose unsaved data in all open documents or programs. Be sure to save all data beforehand.

A Soft Reset may be performed in the following instances.

- ▶ When your PC-EPhone’s response slows down suddenly.
- ▶ When your PC-EPhone appears to be frozen or locked up.
- ▶ After restoring data from a backup file.

A Soft Reset is performed in the following method.

- ▶ Press the “**Reset**” button on the backside of your PC-EPhone using the stylus.

(2) CDMA Reset

A CDMA reset will have the same affects on the system as a Soft Reset, and will reset the CDMA module.

A CDMA Reset may be performed in the following instances.

- ▶ When the system does not operate properly even after a Soft Reset.
- ▶ When the CDMA module is not activated, that is, when nothing appears on the CDMA Status Display.

A CDMA Reset is performed in the following method.

- ▶ After detaching battery from PC-EPhone battery slot, reattach it.

(3) Hard Reset

A Hard Reset restores your PC-EPhone to its original factory settings, erasing all information that is not stored in the Intel Persistent Storage Management (IPSM).



When you perform a hard reset, you will lose all information that is not stored in the Intel Persistent Storage Management (IPSM), including data files, system settings, and programs you have installed. Be sure to save all data in a secure place using system backup methods (ActiveSync or Backup Utility) before you perform a Hard Reset.



You can restore data after a Hard Reset by using backup data. For detailed information on how to restore, refer to “Chapter 5 Backing up and Restoring Data”

A Hard Reset may be performed or may occur in the following instances.

- ▶ When the user has forgotten the password.
- ▶ When your PC-EPhone does not operate even after performing a Soft Reset and a CDMA Reset.
- ▶ When the backup battery is fully drained (In this case, the system automatically performs a Hard Reset).

A Hard Reset is performed in the following method.

- ▶ Simultaneously press the “**Reset**” button on the backside of your PC-EPhone with your finger and the “**Power**” button on the right side, using the stylus.
- ▶ First lift the stylus from the “**Reset**” button on the backside of your PC-EPhone and lift your finger from the “**Power**” button on the right side about 0.5 second later.

III. Backup and Restore Data

Your PC-EPhone provides you with various methods of backing up and restoring data according to your needs.

▶ **Full Backup/Restore**

Using ActiveSync or the Backup Utility, you can safely store all of the system's data (excluding ROM).

▶ **Backup/Restore using Backup Utility**

On the **Start** menu, point to **Programs, Accessories**, then tap **Backup/Restore**, and you can Backup/Restore data to/from the IPSM or a CF Memory Card by using the **bUSEFUL Backup Wizard**. For more information, see *online help on Backing up and Restoring data*.

▶ **Backup/Restore by file**

You can back up needed files to your desktop PC or an external device (CF Memory Card) using ActiveSync and Windows CE Explorer.



For more information on backing up and restoring refer to “*Chapter 5 Backing up and Restoring Data*”

IV. Troubleshoot basic problems with PC-EPhone

The information below describes common problems that arise while using the PC-EPhone and how to solve them.

▶ **PC-EPhone runs very slowly or the system does not operate properly.**

As your PC-EPhone's capacity falls short, compared with that of your desktop PC resources, the memory of PC-EPhone may be drained when many applications are run simultaneously, therefore causing a slowdown or a temporary suspension. Run only the least number of necessary applications as possible. When this problem occurs, close unnecessary applications. If the problem persists, **Reset** your PC-EPhone and proceed after the system's memory has been re-adjusted.



For information on how to reset, see the “Reset your PC-EPhone” section in this chapter.



Reset in the order of Soft Reset, CDMA Reset, then Hard Reset.

▶ **“Backup Battery Very Low” Warning message keeps appearing.**

The Backup Battery of your PC-EPhone acts as a supplementary power source in order to prevent losing data in case the main battery is drained. When such a message appears, quickly replace the Main Battery or supply power to your PC-EPhone using the charger so as not to lose data, and also charge the Backup Battery.



This message may continue to appear until the Backup Battery is fully charged, even if the Main Battery is sufficient. In this case, use your PC-EPhone while placing it in the charger.

▶ **Display screen automatically turns off when PC-EPhone is not used for a certain period of time.**

In order to maximize power usage, your PC-EPhone automatically converts into a **Sleep mode** when there is no user input for a certain period of time. At this time, all data is properly preserved and when you press the Power button, your PC-EPhone is restored to the state it was in before converting into the Sleep Mode. To set the auto-suspend time, alter the following settings.

On the **Start** menu, point to **Setting, Control Panel**, then tap the **Power** icon, and then the **Power Off** tab. On Sleep mode setting, adjust the number of minutes before auto-suspend occurs. After the set period of continuous idle time, your PC-EPhone will automatically convert to the **Sleep mode**.

- ▶ **PC-EPhone does not automatically convert to Sleep mode during data communications (Internet Access) or when connected to a desktop PC.**

This is not a error. If the PC-EPhone converts to the Sleep mode during data communications or when connected to a desktop PC, the connection is broken, in turn disabling further communications. Therefore, the PC-EPhone is designed not to convert to the Sleep mode in these cases. You may of course manually (press the **Power** button on the right side) convert your PC-EPhone into the Sleep mode. Be careful not to disconnect communications.

- ▶ **Response to stylus input is inaccurate.**

There is something wrong with the touch screen setting. On the **Start** menu of your PC-EPhone, point to **setting** and tap **Control Panel** and the control panel screen appears. Select the **Stylus** icon and re-adjust the recalibration screen in the Calibration tab.

- ▶ **Stylus double-tap does not work properly.**

Re-adjust double-tapping in the following method.

On the **Start** menu of your PC-EPhone, point to **setting** and tap **Control Panel** and the control panel screen appears. Tap the **Stylus** icon and re-adjust the tap intervals according to the directions given on the Double-Tap tab.

- ▶ **It takes too long time in charging the battery of PC-EPhone.**

Actually, it takes too long time in charging the battery of PC-EPhone. In order to charge it quickly, press the Power button on the right side of PC-EPhone to convert into the Sleep mode.

- ▶ **PC-EPhone does not operate even when the Power button is pressed.**

It may not operate mainly in the following cases.

- Check to see if the Battery Lock of the Main Battery in the back is switched upward.
PC-EPhone does not operate if the Battery Lock is switched downward.

- Battery power is low : When battery power is low, PC-EPhone suspends operation in order to preserve data. In this event, you must replace the battery or use the PC-EPhone placed in its cradle.
- In all other cases, restart your PC-EPhone by pressing the **Reset** button on the backside.



All unsaved data in open documents and programs will be erased as a result of reset.

If the methods given above do not work, try a CDMA Reset and/or Hard Reset on the system. You can perform a CDMA Reset by detaching the battery and then reattaching it, and a Hard Reset by simultaneously pressing the **Power** button with your finger and the **Reset** button in the back with the stylus, and then lifting the stylus from the **Reset** button and your finger from the **Power** button about 0.5 second later. In this event, all data stored in the RAM is erased, so be sure to regularly back up your data in advance (see “**Chapter5 Backing up and Restoring Data**”).

▶ **PC-EPhone’s display turns dim or seems to disappear in bright surroundings.**

As PC-EPhone uses a TFT LCD display screen and a backlight, it is hard to read the screen in places with direct sunlight. Use your PC-EPhone in shaded areas or indoors whenever possible.

▶ **The font size is either too small or too large.**

Your PC-EPhone’s standard font size is preset to fit the size of the screen. In cases where you need to change the standard font size, tap **Control Panel** on the **Start** menu so that the Control Panel display appears. Select **System Font** and adjust the font size to the size you desire.



After the font is altered, the system performs a Soft Reset. Close all programs before performing this task.

▶ **“Program memory shortage” or “Storage memory shortage” error occurs while using the PC-EPhone.**

This problem occurs when your PC-EPhone’s RAM space is insufficient as you are running too many applications or using too many data files. In this event, close as many unnecessary applications as possible to expand “**program memory**” or erase unnecessary data files. If the problem persists, perform a Soft Reset on your PC-EPhone.

V. Tips for better using PC-EPhone

▶ **Battery**

- Change batteries quickly and do not switch the Battery Lock upward when the battery is detached. If there is no power supplied to the cradle, it is unable to connect to a desktop PC.
- As charging the Backup Battery takes a substantial amount of time(about 24 hours), you should use your PC-EPhone placed in the cradle when possible so as not to fully drain the battery.
- Be careful that PC-EPhone's terminal does not get caught when installing the Main Battery.
- The battery terminals can be damaged if excessive force is used.
- The battery's charging status may be temporarily displayed differently according to the conditions in which it is used. In other words, a amount of electric power is needed when connected to the Internet or during a phone call. In these cases, the battery's charging status may appear to be very insufficient.
- Be especially careful as when the Main Battery and the Backup Battery are fully drained, PC-EPhone automatically performs a Hard Reset, resulting in damaging all data stored in the RAM and all installed programs.

▶ **Reset**

- When a reset is needed, try a **Soft Reset** first. Even after that, if it does not operate properly, try a **CDMA Reset** then a **Hard Reset**. However, when you perform a Hard Reset, you will lose all information that is not stored in the Intel Persistent Storage Management (IPSM), including data files, system settings, and programs you have installed. Be sure to save all data in a secure place using system backup methods (ActiveSync or Backup Utility) before you perform a Hard Reset.

▶ **ActiveSync**

- You may not use a LAN Card with PC-EPhone placed in the cradle and running ActiveSync. However, you may use a LAN card when ActiveSync is not in operation.
- For infrared communication, there must not be any obstruction between the notebook and the PC-EPhone, and the distance between the two IR ports must be under 1m. Also, you must align the IR ports of the two devices so that they are aimed directly at one another.
- As for synchronization items, when establishing Partnership or on the ActiveSync screen, tap **Options** on the **Tools** menu and you may set an additional

synchronization items.

- A desktop PC can establish partnerships with several Windows CE based Palm-size PCs, whereas a single Windows CE based Palm-size PC can establish partnerships with two desktop PCs.

▶ **Backup/Restore**

- IPSM's data Backup/Restore speed is slower than that of RAM. Copy frequently used data or data requiring quick speeds onto the RAM.
- Automatic backup is only possible when a partnership is established with a desktop PC.
- Only a manual backup is possible if the setting is at **Guest**.

▶ **Phone program**

- For efficient battery use, if you are on the phone for an extended period of time, it is recommended to press the **power** button on the right side and turn off the PC-EPhone display screen.
- When the temperature falls below 0°C(32°F) or rises above 40°C(104°F) while the Phone program is running, there may be difficulty in transmitting a call due to a LCD-characteristic white out occurrence.
- If the phone bell is set at melody, be careful, as when the melody **WAV file** is deleted, so is the phone reception bell.
- You may not transmit SMS during data communications (Internet access).

▶ **PC-EPhone Web browser**

- While connected to the Internet, that is, during data communications, you may not use both the Phone program and SMS. If a short message is received during data communications (Internet access), the Internet access may be broken according to the preference for ISP.
- PC-EPhone does not automatically enter the **Sleep mode** while Internet access (PC-EPhone Web browser, E-mail) programs are in use.

▶ **PC-EPhone and others**

- To turn off your PC-EPhone, do not switch the Battery Lock downward and use the Power button on the right side of your PC-EPhone.

VI. Travel Safety of PC-EPhone

For safety and convenience when traveling with your PC-EPhone, follow the guidelines given below.

▶ **General**

- Back up your PC-EPhone data to a CF Memory Card before you leave.
- Keep the backup CF Memory Card in a safe place and keep it under care together with your PC-EPhone.
- Disconnect all external devices from PC-EPhone.
- Take a power supply and a sufficiently charged battery with you.
- Carry your PC-EPhone in a protective case. Do not pack it with your other luggage.
- Check airline regulations before using your PC-EPhone aboard an airplane. Regulations on on-flight usage of electronic devices differ by airline.

▶ **International Travel**

Before traveling internationally with your PC-EPhone, check the following :

- Check local customs regulations.
- If using an external CF Card modem, be sure to have the correct modem and cable for the country you are visiting. The Phone connection number may differ from country to country.

▶ **Transporting Guidelines**

When transporting your PC-EPhone, follow the guidelines listed below:

- Store a backup copy in a safe place.
- Be sure that the materials for backup (CF Card, diskette, or tape) is not exposed to electrical or magnetic impulses while in transit.
- Turn off your PC-EPhone and disconnect all external devices.
- Pack your PC-EPhone and all external devices (cradle, cables, etc.) in their original packing boxes or in protective cases.
- Airport security inspecting devices include the X-ray Machine, Magnetic Detector (a walk through inspector), and the Security Magnetic Wand. Though the X-ray Machine does not affect the PC-EPhone, defects may occur when PC-EPhone pass through the Magnetic Detector or the Security Magnetic Wand.

CHAPTER 10

SUPPORT AND SERVICE

This chapter will give you information on PC-EPhone related Web sites, where you can obtain more product information, and on customer support.

I. Web Sites

- ▶ <http://www.cb.co.kr>

You can access information related to Cyberbank Corp. as well as the current conditions of the company.

- ▶ <http://www.pc-ephone.co.kr>

This is a customer support web site for the PC-EPhone. Here, you can see the most up-to-date information on the PC-EPhone (User's Manual and various information), customer questions, and detailed information and reports on the product. You may also download S/W that will help you keep your PC-EPhone in its best condition and install it in your PC-EPhone.

II. Service Center

Your PC-EPhone is warranted against malfunctions caused by manufacturing defects and is entitled to free repair during the warranty period, and after the warranty has ended, you may receive repairs for defects with a service charge payment.



Free repairs do not apply to the following instances even during the warranty period:

- ▶ Defects resulting from misuse or mishandling
- ▶ Unauthorized repairs or modification
- ▶ In-transit damage
- ▶ Defects resulting from natural disasters including fires and floods
- ▶ Defects resulting from power abnormalities
- ▶ Abrasion of consumables
- ▶ When the warranty is not presented

If there is something wrong with your PC-EPhone or if you have questions that the User's Manual does not answer, please contact the nearest service center or the **CYBERBANK Customer Center**. (Tel: 82-2-3483-4545)

III. Purchasing Accessories

To purchase accessories, contact the dealer from which you purchased your PC-EPhone or the **CYBERBANK Customer Center** (Tel: 82-2-3483-4545) or visit our product support Web Site (<http://www.pc-ephone.co.kr>).

APPENDIX A

USING THE CHARACTER RECOGNIZER

Most people find they can enter text quickly and accurately with only minutes of practice. DioPen handwriting recognition includes any character you can type on a standard keyboard. The DioPen strokes closely resemble the uppercase letters of the regular alphabet, which makes Diopen handwriting recognition easy to learn.

▶ Lati1 1 Basic Letter - Alphabet ◀

letter	shape	letter	shape
A		N	
B		O	
C		P	
D		Q	
E		R	
F		S	
G		T	
H		U	
I		V	
J		W	
K		X	
L		Y	
M		Z	

► Lati1 1 Basic Letter - Numeric ◀

digit	shape
0	0
1	1
2	2
3	3
4	4
5	5 5 5
6	6
7	7 7
8	8 8
9	9 9





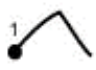







► Lati1 1 Basic Symbol Letter ◀

letter	shape	letter	shape
&		(
@)	
#		<	
\$		>	
%		[
*]	
^		{	
!		}	
?		:	
~		;	
+		,	
-		!	
=		\	
/		"	
\			

► Lati1 1 Supplement Symbol Letter ◀

Letter	Shape	Letter	Shape	Letter	Shape	Letter	Shape
□		□		┘		½	
f		~		-		¾	
□		™		®		ı	
...		š		□		Æ	
†		□		°		Ç	
‡		œ		±		Ð	
□		i		2		×	
%		¢		3		Ø	
š		£		'		Þ	
□		⊘		μ		ß	
œ		¥		¶		æ	
‘		ı		·		ç	
’		§		ˆ		ð	
“		¨		1		÷	
”		©		o		ø	
□		ä		»		þ	
□		«		¼		Euro Mark	

► Accented Letter ◀

accent	shape	example
grave		
acute		
circumflex		
tilde		
degree		
umlaut		

APPENDIX B

HARDWARE SPECIFICATIONS

Processor	Intel StrongARM SA-1110 32-bit RISC Processor
Memory	32MB RAM, 32MB Flash ROM
Display	4" TFT LCD, 256 colors VGA(640x480 resolution, 200dpi)
Wireless Communications	CDMA : MSM3000, IS-95B Voice and data communication
Interface	1 Infrared port 1 CompactFlash Type II Card slot 1 Serial port
Buttons	Phone button, Power button, Record button 4 way Navigation buttons Enter button
Battery	Main battery: 1,860 mAh Lithium battery(2,930 mAh, rechargeable) Backup battery: Lithium battery(3V, 90mA, rechargeable) External input:110 and 220V use Output:12V/1.3A
Charger	1 Serial cable 1 A/C adapter 1 battery slot
OS	Microsoft Windows CE 3.0
Size (widthxdepthxheight)	127mm x 102mm x 22mm
Weight	299g(Including battery)
S/W	Phone program, SMS, Microsoft Pocket Word, bSquare BSpreadSheet, PDF Viewer, PC-EPhone Web Browser (IE4.0 compatible), E-mail, Contacts, Tasks, Calendar, Calculator, Memo, Handwriting Recognizer (DioPen), Backup Utility, Recorder, MineSweeper

APPENDIX C

GLOSSARY

ActiveSync

A feature of Windows CE Services that manages data synchronization between your PC-EPhone and desktop PC. You can specify the type of data you want to synchronize.

Backup file

A duplicate copy of your PC-EPhone files and data that is stored on your desktop PC or on a PC Card. This file does not include your PC-EPhone settings and information stored in ROM, such as factory-installed software. Use your backup file to restore your PC-EPhone to its previous state if your device data is damaged or destroyed or if you have performed a full reset.

Cache

A special high-speed storage mechanism that saves temporary copies of Web pages and other file types as you view them. Your computer can quickly display Web pages you have recently visited, because Pocket Internet Explorer can open them from cache instead of having to load them again from the Web. Increasing the space designated for your cache folder increases how quickly recently visited files are displayed, but decreases the amount of space available for other files on your PC-EPhone. You can choose to empty your cache upon exiting Pocket Internet Explorer. This saves space on your device.

Cookies

A packet of messages a Web server passes to your Web browser. When you enter a Web site that uses cookies, you may be asked to fill out a form with information such as your name and interests. This information is passed to your Pocket Internet Explorer browser as a cookie (in the form of a text file called cookie.txt). The next time you visit that Web site, your Pocket Internet Explorer will pass the cookie back to the Web server, and the server will use this information to present you, for instance, with custom Web pages filled with information of interest to you. For example, instead of being presented with a generic welcome page, you might receive a welcome page with your name on it.

Dial-up connection

A connection between your PC-EPhone and another computer by modem. You can have a dial-up connection with an ISP, a network, or with a modem attached to a PC.

Direct connection

A connection between your PC-EPhone and another computer by means of the sync cable or IR port.

DNS

Domain Name System (DNS) is an Internet service that translates domain names into IP addresses.

Full reset

To return your PC-EPhone to its original state by removing all power, thereby erasing all files and data you have saved.

Internet Service Provider (ISP)

A company that provides access to the Internet.

IP

Internet Protocol (IP) specifies the format of packets, also called datagrams, and the addressing scheme of the Web. Much like a postal system, IP allows you to address a package and drop it into the system, but your package is not delivered instantly to your recipient. The packets are simply delivered to a server until the recipient downloads them by logging onto the ISP server.

LAN

A local area network (LAN) is a group of computers, usually in close proximity (either in the same building or in buildings in close proximity), that are linked together to share files and exchange data.

NIC

A network interface card (NIC) is a card that is installed in a computer so that it can be connected to a network. Network interface cards can provide a dedicated, full-time connection to a network.

ODBC databases

Open DataBase Connectivity (ODBC), is a standard database access method. The goal of ODBC is to make it possible to access any data from any application, regardless of which database management system is handling the data.

Partnership

An established relationship between your PC-EPhone and your PC for the purpose of synchronizing and transferring data. Your PC-EPhone can have partnerships with up to two desktop computers.

PCT

Private Communication Technology (PCT) is a protocol that maintains the security and integrity of Internet communications by using encryption, authentication, and message-authentication codes. The protocol is application independent, and is used by Web browsers and e-mail clients to send data via the Internet. PCT is able to negotiate encryption keys as well as authenticate a server before data is exchanged by the higher-level application.

POP

Post Office Protocol (POP) was the first protocol used to retrieve e-mail from a mail server. Most e-mail applications (sometimes called e-mail clients) use the POP protocol, although some may use the newer IMAP (Internet Message Access Protocol).

PPP

Point-to-Point Protocol (PPP) is the default method your PC-EPhone uses to communicate with the ISP network server.

RAS (Remote Access Service) account

A network account that enables your PC-EPhone to access your Windows NT network remotely.

Remote connection

A connection between your PC-EPhone and a remote computer or server.

Reset

A process that either causes your PC-EPhone to restart (soft reset) or causes all data stored in RAM to be erased (full reset).

Restore

To return your device to the state it was in when last backed up. This involves copying your backup data to your PC-EPhone.

SLIP

Serial Line Protocol (SLIP) is an older and simpler protocol than PPP. Connecting to the Internet via SLIP is very similar to connecting via PPP.

Soft reset

The process of restarting your PC-EPhone and reinitializing the Windows CE operating system. Performing a soft reset will erase any unsaved data in open documents, but will preserve data that has been saved. (Also called “warm boot.”)

APPENDIX D

WARRANTY

1. Product Warranty

1) Limitation of Warranty

- ① This hardware product is warranted against defects in material and workmanship and is entitled to free repairs for a period of one year from receipt by the original end-user purchaser. If the original date of purchase is obscure, it will be estimated by adding 6 months to the product manufacturing date (identified by product serial number).
- ② The battery is warranted for a period of 6 months from the original purchase. However, if the original date of purchase is obscure, it will be estimated by adding 3 months to the product manufacturing date.

2) Free repairs do not apply to the following instances even during the warranty period.

- ① Defects resulting from user carelessness including dropping the product in water, bringing close to fire, impressing excessive voltage, and dropping the product
- ② Defects resulting from natural disasters including fires, floods, and earthquakes
- ③ Voluntary repairs or modification performed by the user
- ④ Defects resulting from repairs or modification performed by a third party other than the CYBERBANK appointed service network
- ⑤ Defects resulting from reasons other than problems in manufacturing

2. CYBERBANK Product License Agreement

Please read the license agreement carefully before using the product.

This product includes pre-installed software programs whose rights are not for sale. CYBERBANK and the software owners will continue to possess ownership to all intellectual property rights of the pertaining software, and by agreeing to this license agreement, the user is granted rights to use the software. Using the product implies that the user has agreed to the terms of this license agreement. If you do not agree to these terms, you must return the product before using it.

1) CYBERBANK Product License Agreement

The CYBERBANK Product License Agreement shall govern the use of all software that is provided to you, the user, as part of this product with the exception of Microsoft software. Microsoft Products are licensed to you under the Microsoft End User License Agreement(EULA). Microsoft software supplier's warranty may be found on-line, or in any documentation or other materials contained in the product packaging, and will govern the use of Microsoft software.

2) Use

You may only use the software on a single computer. You may not reverse or assemble the software.

3) Copies and adaptations

You may make copies or adaptations of the software for archival purposes, or when copying or adaptation is an essential step in the use of the software with a computer so long as the copies and adaptations are used in no other manner.

You have no other rights to copy unless you acquire and appropriate license from CYBERBANK to reproduce, and CYBERBANK will not be responsible for unauthorized copies or adaptations.

All copies and adaptations of the software must bear the copyright notice(s) contained in or on the original.

4) Ownership

You acknowledge and agree that all software is copyrighted and protected under the copyright laws and that the customer does not have any title or ownership of the software, except for the Service CD that is included with the product on purchase. You acknowledge and agree that a third party software supplier will be authorized to hold you responsible for any copyright infringement or violation of this or their own License Agreement on their software or part thereof.

5) Transfer of rights in software

You may transfer rights to the software to a third party only on the following 3 conditions.

- ① You must transfer all your rights to the third party all together.
- ② You must obtain the prior agreement of the third party to be bound by the terms of this License Agreement.

Upon such a transfer, you agree that your rights to the software are terminated and that you will either destroy all your copies and adaptations or deliver them to the third party.

6) Sublicensing and distribution

You may not lease, sublicense the software or distribute copies or adaptations of the software in the Service CD that is included with your product without the prior written consent of CYBERBANK.

7) Updates and upgrades

You agree that the software does not include updates and upgrades that may be available from CYBERBANK under a separate support agreement.

8) Export clause

You agree not to export or re-export the software or any copy or adaptation in violation of the License Agreement or other applicable regulations.

9) Termination

CYBERBANK may terminate this software license for failure to comply with any of these terms, provided CYBERBANK has requested you to cure the failure and you have failed to do so within 30 days of such notice.