

DAP-2695

Version 1.0

*AirPremier*<sup>®</sup>  
**AC1750 Dual Band  
PoE Access Point**

 **Quick Install Guide**

---

# Package Contents

- DAP-2695 Access Point
- Six Detachable Antennas
- Power Adapter
- Power Cord
- PoE Base Unit
- Mounting Plate and Hardware
- Ethernet Cable
- Console Cable
- CD (with software and user manual)

**Note:** Using a power supply with a different voltage than the one included with the DAP-2695 will cause damage and void the warranty for this product. If any of the above items are missing, please contact your reseller.

## System Requirements

### Minimum System Requirements:

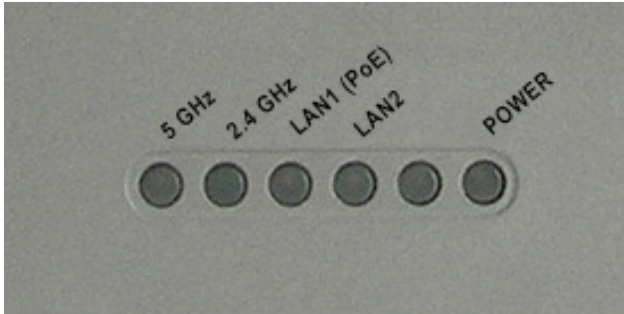
- CD-ROM Drive
- Computers with Windows®, Macintosh®, or Linux-based operating systems
- Installed Ethernet adapter or wireless adapter
- Internet Explorer 7, Chrome, Firefox, or Safari 4 or higher

\* Maximum Wireless signal rate derived from IEEE 802.11ac (draft), 802.11n, 802.11a, and 802.11g specifications. Actual data throughput will vary. Network conditions and environmental factors, including volume of network traffic, building materials and construction, and network overhead lower actual data throughput rate.

---

# Hardware Overview

## LEDs



**5 GHz** - When lit, the access point is operating at 5GHz. This light will blink when there is wireless traffic.

**2.4 GHz** - When lit, the access point is operating at 2.4GHz. This light will blink when there is wireless traffic.

**LAN1 (PoE)** - Solid light when the Ethernet port is connected to a power over Ethernet (PoE) port, such as a router or switch. The light will blink when there is traffic through LAN port.

**LAN2** - Solid light when the Ethernet port is connected to a working port, such as a router or switch. The light will blink when there is traffic through LAN port.

**POWER** - The light will blink during boot up. Once solid, the access point is ready.

# Connections



<b>1</b>	Reset Button	Press and hold for six seconds to reset the access point to the factory default settings.
<b>2</b>	Console Port	Connect the supplied console cable to configure using a command line interface.
<b>3</b>	LAN2 Port	Connect to your network with an Ethernet cable.
<b>4</b>	LAN1 (PoE) Port	Connect to a Power over Ethernet (PoE) switch or router.
<b>5</b>	Power Receptor	Connect the supplied power adapter.

---

# Installation

To power the access point, you can use one of the following 3 methods:

**Method 1** - Use if you have a PoE switch or router.

**Method 2** - Use if you do not have a PoE switch or router and do not have a power outlet near the location of the access point.

**Method 3** - Use if you do not have a PoE switch or router and have a power outlet near the location of the access point.

## Method 1

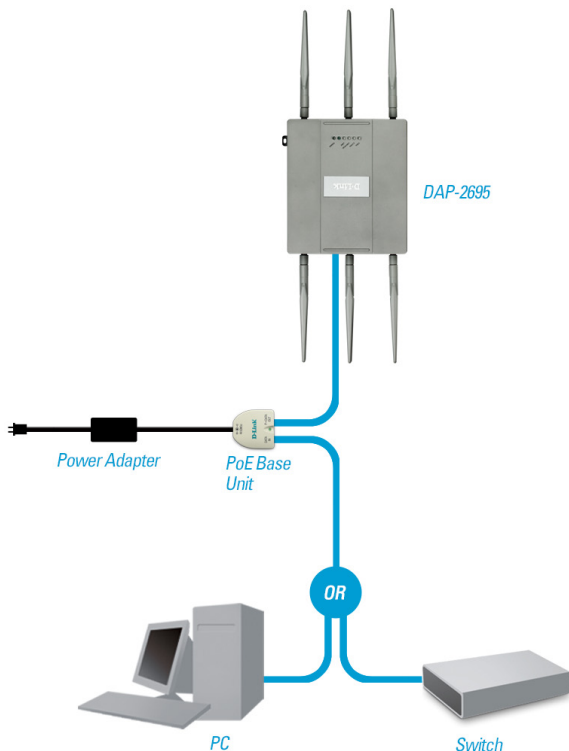
1. Connect one end of your Ethernet cable to the LAN1 (PoE) port on the access point.
2. Connect the other end into one port on a PoE switch or router.



---

## Method 2

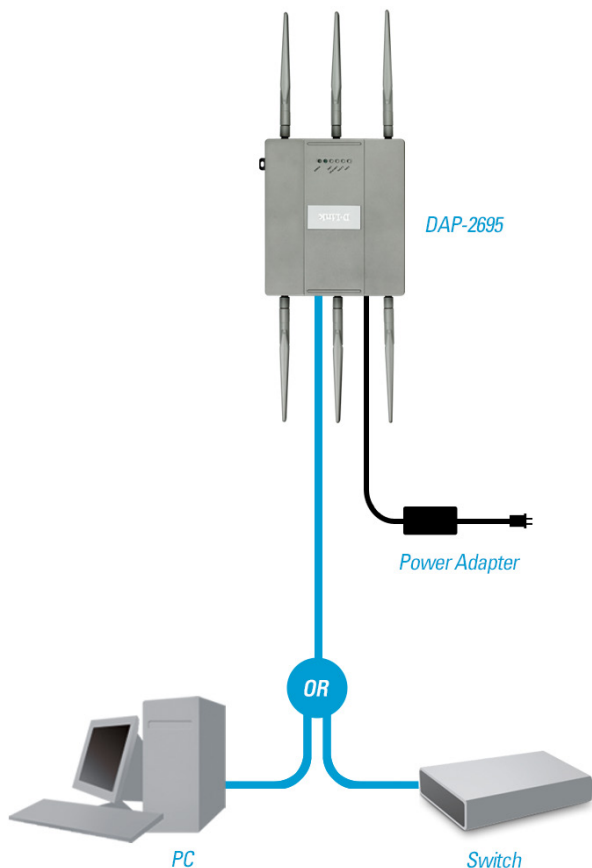
1. Connect one end of an Ethernet cable into the **Data In** port on the PoE base unit and the other end into one port on your switch, router, or computer.
2. Connect one end of an Ethernet cable into the **P+Data Out** port on the PoE base unit and the other end into the **LAN1 (PoE)** port on the Access Point.
3. Use the supplied power adapter. Connect the power adapter to the **Power In** receptor on the PoE adapter.
4. Connect the power cable to the power adapter and then connect the other end into a power outlet.



---

### Method 3

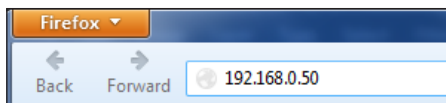
1. Connect one end of your Ethernet cable into the **LAN2** port on the Access Point and then connect the other end to a switch, router, or computer.
2. Use the supplied power adapter. Connect the power adapter to the Power receptor on the Access Point.
3. Connect the power cable to the power adapter and then connect the other end into a power outlet.



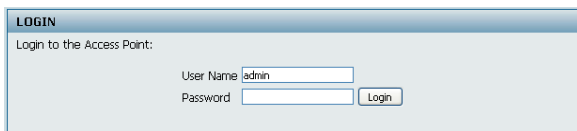
# Configuration

**Note:** It is recommended to configure your DAP-2695 before mounting. The easiest way is to connect to the Access Point directly to a computer using an Ethernet cable. Statically assign the IP address of your computer to 192.168.0.2 with a subnet mask of 255.255.255.0.

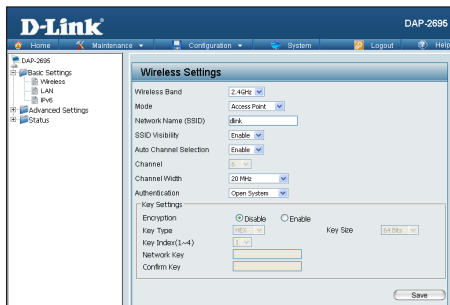
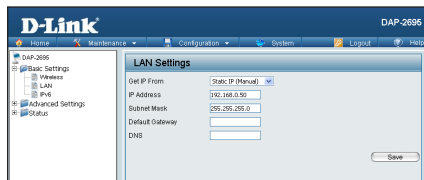
**Step 1:** Open a web browser (e.g., Internet Explorer, Chrome, Firefox, or Safari) and enter **http://192.168.0.50**.



**Step 2:** At the login screen, enter admin for the user name and leave the password blanks. Click **Login** to continue.



**Step 3:** After the home page appears, go to **Basic Settings > LAN** to change the IP settings of the DAP-2695. Go to **Basic Settings > Wireless** to configure your wireless settings.



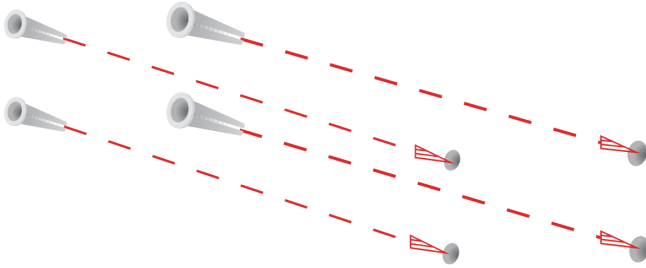
**Note:** Make sure you click on **Configuration > Save and Activate** to save your settings.



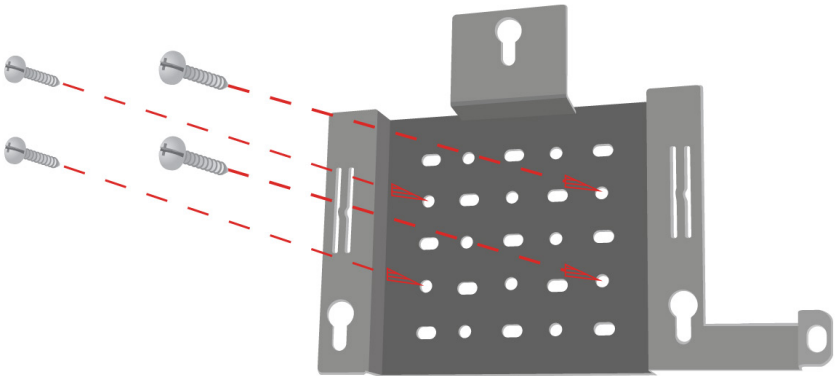
---

# Mounting

**Step 1:** Insert the provided wall anchors in the wall where the mounting plate will be attached.

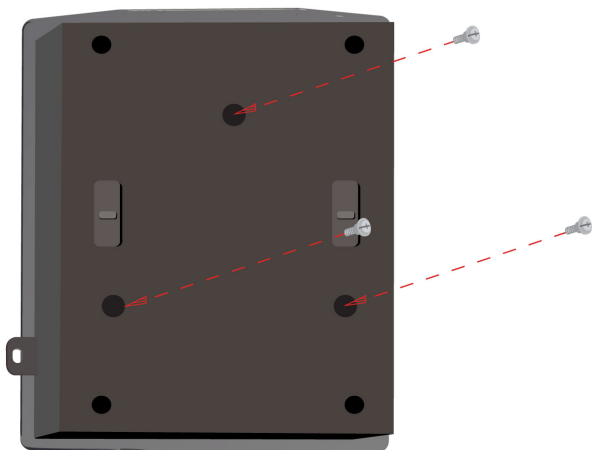


**Step 2:** Use the provided screws to secure the mounting plate on the wall.



---

**Step 3:** Attach the remaining screws securely to the back of the DAP-2695.

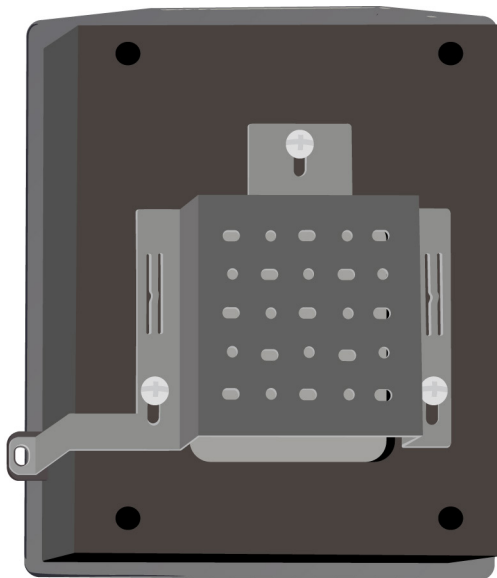


**Step 4:** Attach the DAP-2695 to the mounting plate.



---

**Step 5:** Slide the DAP-2695 down into the grooves on the mounting plate to secure it to the plate.



# Technical Support

D-Link's website contains the latest user documentation and software updates for D-Link products.

U.S. and Canadian customers can contact D-Link Technical Support through our website or by phone.

## United States

**Telephone**

(877) 354-6555

**World Wide Web**

<http://support.dlink.com>

## Canada

**Telephone**

(877) 354-6560

**World Wide Web**

<http://support.dlink.ca>

# **D-Link<sup>®</sup>**

Version 1.0

July 8, 2013

Copyright ©2013 D-Link Corporation/D-Link Systems, Inc. All rights reserved. D-Link and the D-Link logo are trademarks or registered trademarks of D-Link Corporation or its subsidiaries in the United States and other countries. Other trademarks are the property of their respective owners. All references to speed are for comparison purposes only. Product specifications, size, and shape are subject to change without notice, and actual product appearance may differ from that depicted herein. Visit [www.dlink.com](http://www.dlink.com) for more details.

## **FCC Statement:**

### **Federal Communication Commission Interference Statement**

This equipment has been tested and found to comply with the limits for a Class B digital device, pursuant to Part 15 of the FCC Rules. These limits are designed to provide reasonable protection against harmful interference in a residential installation. This equipment generates, uses and can radiate radio frequency energy and, if not installed and used in accordance with the instructions, may cause harmful interference to radio communications. However, there is no guarantee that interference will not occur in a particular installation. If this equipment does cause harmful interference to radio or television reception, which can be determined by turning the equipment off and on, the user is encouraged to try to correct the interference by one of the following measures:

- Reorient or relocate the receiving antenna.
- Increase the separation between the equipment and receiver.
- Connect the equipment into an outlet on a circuit different from that to which the receiver is connected.
- Consult the dealer or an experienced radio/TV technician for help.

FCC Caution: Any changes or modifications not expressly approved by the party responsible for compliance could void the user's authority to operate this equipment.

This device complies with Part 15 of the FCC Rules. Operation is subject to the following two conditions: (1) This device may not cause harmful interference, and (2) this device must accept any interference received, including interference that may cause undesired operation.

For product available in the USA/Canada market, only channel 1~11 can be operated. Selection of other channels is not possible.

This device and its antennas(s) must not be co-located or operating in conjunction with any other antenna or transmitter except in accordance with FCC multi-transmitter product procedures.

This device is going to be operated in 5.15~5.25GHz frequency range, it is restricted in indoor environment only.

### **IMPORTANT NOTE:**

#### **FCC Radiation Exposure Statement:**

This equipment complies with FCC radiation exposure limits set forth for an uncontrolled environment. This equipment should be installed and operated with minimum distance 20cm between the radiator & your body.

## IC Statement:

CAN ICES-3 (B)/NMB-3(B)

This device complies with Industry Canada license-exempt RSS standard(s). Operation is subject to the following two conditions: (1) this device may not cause interference, and (2) this device must accept any interference, including interference that may cause undesired operation of the device.

*Le présent appareil est conforme aux CNR d'Industrie Canada applicables aux appareils radio exempts de licence. L'exploitation est autorisée aux deux conditions suivantes : (1) l'appareil ne doit pas produire de brouillage, et (2) l'utilisateur de l'appareil doit accepter tout brouillage radioélectrique subi, même si le brouillage est susceptible d'en compromettre le fonctionnement.*

For product available in the USA/Canada market, only channel 1~11 can be operated. Selection of other channels is not possible.

*Pour les produits disponibles aux États-Unis / Canada du marché, seul le canal 1 à 11 peuvent être exploités. Sélection d'autres canaux n'est pas possible.*

This device and its antennas(s) must not be co-located or operating in conjunction with any other antenna or transmitter except in accordance with IC multi-transmitter product procedures.

*Cet appareil et son antenne (s) ne doit pas être co-localisés ou fonctionner en association avec une autre antenne ou transmetteur.*

The device could automatically discontinue transmission in case of absence of information to transmit, or operational failure. Note that this is not intended to prohibit transmission of control or signaling information or the use of repetitive codes where required by the technology.

*Le dispositif pourrait automatiquement cesser d'émettre en cas d'absence d'informations à transmettre, ou une défaillance opérationnelle. Notez que ce n'est pas l'intention d'interdire la transmission des informations de contrôle ou de signalisation ou l'utilisation de codes répétitifs lorsque requis par la technologie.*

The device for the band 5150-5250 MHz is only for indoor usage to reduce potential for harmful interference to co-channel mobile satellite systems.

*les dispositifs fonctionnant dans la bande 5150-5250 MHz sont réservés uniquement pour une utilisation à l'intérieur afin de réduire les risques de brouillage préjudiciable aux systèmes de satellites mobiles utilisant les mêmes canaux;*

## IMPORTANT NOTE:

### IC Radiation Exposure Statement:

This equipment complies with IC RSS-102 radiation exposure limits set forth for an uncontrolled environment. This equipment should be installed and operated with minimum distance 20cm between

the radiator & your body.

*Cet équipement est conforme aux limites d'exposition aux rayonnements IC établies pour un environnement non contrôlé.  
Cet équipement doit être installé et utilisé avec un minimum de 20 cm de distance entre la source de rayonnement et votre corps.*