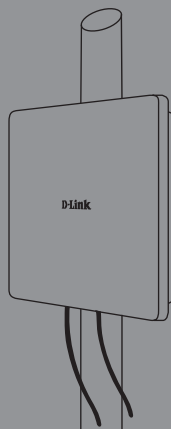




Quick Installation Guide

Wireless AC1200 Concurrent Dual Band Outdoor PoE Access Point

This document will guide you through the basic installation process for your new D-Link Dual Band Outdoor Access Point DAP-3662



Quick Installation Guide

Краткое руководство по установке

Guía de Instalación Rápida

Guia de Instalação Rápida

快速安裝指南

Petunjuk Pemasangan Cepat

クイックインストールガイド

Documentation also available
via the D-Link Website

Important Information

This product should ONLY be installed by an experienced installer who is familiar with local building and safety codes and, where applicable, is licensed by the appropriate authorities. Failure to employ an experienced installer may render the D-Link product warranty void and may also expose the end user or the service provider to legal and financial liabilities. D-Link and its resellers or distributors expressly disclaim any and all liabilities for injury, damage, or violation of regulations due to the improper installation of outdoor units or antennas.

A safety grounding system is necessary to protect your outdoor installation from lightning strikes and the build-up of static electricity. Direct grounding of an outdoor AP is very important and can protect your networks from brutal outdoor environments and devastating ESD attacks. The grounding system must comply with the National Electrical Code and safety standards that apply in your country and/or region. Always check with a qualified electrician if you are in doubt as to whether your outdoor installation is properly grounded.

Quick Install Guide

This installation guide provides basic instructions for installing the DAP-3662 Wireless AC1200 Concurrent Dual Band Outdoor PoE Access Point on your network. For additional information about how to use the Access Point, please see the datasheet and user manual from the D-Link support website.

Minimum System Requirements

Computer with Windows, MAC OS, or Linux-based operating system, and an Ethernet adapter installed

- Internet Explorer 7.0, Mozilla Firefox® version 12.0, Safari 4.0, or Chrome 20.0 or newer

Package Contents

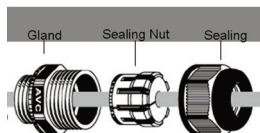
- DAP-3662 Wireless AC1200 Concurrent Dual Band Outdoor PoE Access Point
- Installation CD-ROM
- Quick Installation Guide
- PoE Injector
- Power Adapter (48 V/ 0.5 A)¹
- Mounting kit (Wall/Pole Mount)
 - Stainless steel mount base x 1
 - Stainless tie back straps x 2
 - Wall screw x 4
 - Wall plug x4
 - Stainless mount screw (hexagonal hole) x1
- Hexagon Socket Spanner
- Two LAN Port Waterproof Enclosure
- Grounding Wire

If any of the above items are missing, please contact your reseller.

¹ Using a power supply with a different voltage rating or PoE injector than the one included with the DAP-3662 will cause damage and void the warranty for this product.

Physical Installation

STEP 1: Connect an Ethernet Cable to the LAN1 (PoE) Port on the AP.

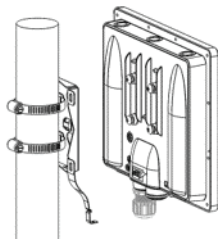


STEP 2: Mount the AP to a Pole or Wall

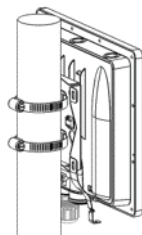
2A: Mounting The DAP-3662 On A Pole



Secure mount base to the pole with two stainless tie back strap sets. Ensure that the tie back is locked securely.

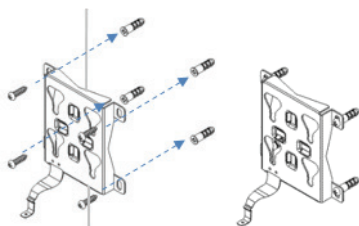


Align the DAP-3662 with the mounting plate

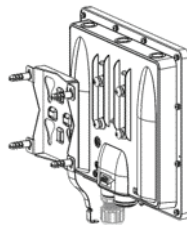


Once aligned, slide the device down so that the mounting plate securely locks into the DAP-3662

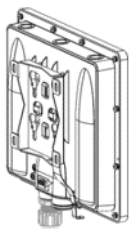
2B: Mounting The DAP-3662 On A Wall



Securely mount the base to the wall using wall plug and wall screw.

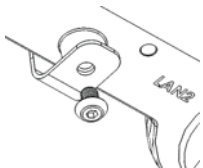


Align the DAP-3662 with the mounting plate

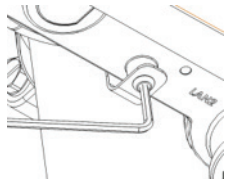


Once aligned, slide the device down so that the mounting plate securely locks into the DAP-3662

STEP 3: Install Mount Screw to Fix DAP-3662 On A Mounting (Pole/Wall Mount base)



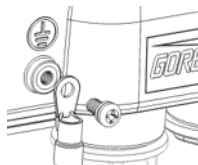
Use the included mount screw (hexagonal hole) to lock the DAP-3662 to the pole/wall mount



With the included hexagon socket spanner, tighten the mount screw until the DAP-3662 is secured.

STEP 4: Connect Grounding Wire

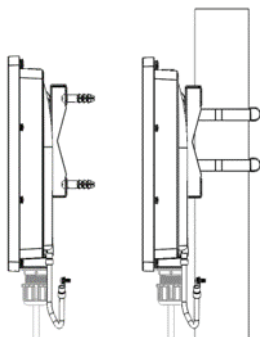
A grounding wire is recommended to protect your device from lightning strikes and the buildup of static electricity.



Attach the grounding wire to the DAP-3662 using the included screw.

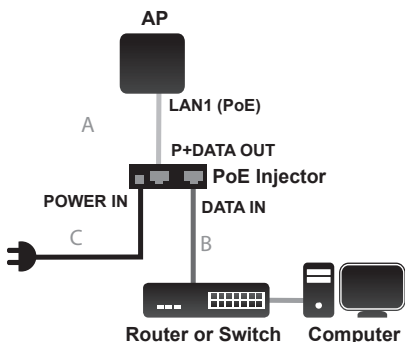


Tighten the grounding wire to the DAP-3662 until it is securely attached.



Attach the other end of the grounding wire to either the wall or pole mount. Ensure that the wall or pole mount is connected to an electrical ground.

STEP 5: Connect the AP to Your Network



- Connect the Ethernet cable (connected to the AP in STEP 1) from the AP to the "P+DATA OUT" port on the PoE Injector.
- Connect an Ethernet cable from a router/switch or PC to the "DATA IN" port on the PoE Injector.
- Attach the power adapter to the connector labeled "POWER IN" on the PoE Injector, and attach it into an electrical outlet.

Configuration

If you are configuring the AP locally, connect a PC to the PoE Injector "DATA IN" port using an Ethernet cable.

- Assign a static IP address to your PC which is in the same network segment with the device. As the default IP address of this unit is 192.168.0.50, you may choose any address from 192.168.0.1 to 192.168.0.254, except 192.168.0.50.
- Open a web browser and go to <http://192.168.0.50>. Enter admin as your username and leave the password blank to log into the web UI. Now you can configure the AP via web UI.

FCC Statement:**Federal Communication Commission Interference Statement**

This equipment has been tested and found to comply with the limits for a Class B digital device, pursuant to Part 15 of the FCC Rules. These limits are designed to provide reasonable protection against harmful interference in a residential installation. This equipment generates, uses and can radiate radio frequency energy and, if not installed and used in accordance with the instructions, may cause harmful interference to radio communications. However, there is no guarantee that interference will not occur in a particular installation. If this equipment does cause harmful interference to radio or television reception, which can be determined by turning the equipment off and on, the user is encouraged to try to correct the interference by one of the following measures:

- Reorient or relocate the receiving antenna.
- Increase the separation between the equipment and receiver.
- Connect the equipment into an outlet on a circuit different from that to which the receiver is connected.
- Consult the dealer or an experienced radio/TV technician for help.

FCC Caution: Any changes or modifications not expressly approved by the party responsible for compliance could void the user's authority to operate this equipment.

This device complies with Part 15 of the FCC Rules. Operation is subject to the following two conditions: (1) This device may not cause harmful interference, and (2) this device must accept any interference received, including interference that may cause undesired operation.

For product available in the USA/Canada market, only channel 1~11 can be operated. Selection of other channels is not possible.

This device and its antennas(s) must not be co-located or operating in conjunction with any other antenna or transmitter except in accordance with FCC multi-transmitter product procedures.

IMPORTANT NOTE:**FCC Radiation Exposure Statement:**

This equipment complies with FCC radiation exposure limits set forth for an uncontrolled environment. This equipment should be installed and operated with minimum distance 23 cm between the radiator & your body.

IC Statement

This device complies with Industry Canada license-exempt RSS standard(s). Operation is subject to the following two conditions: (1) this device may not cause interference, and (2) this device must accept any interference, including interference that may cause undesired operation of the device.

Le présent appareil est conforme aux CNR d'Industrie Canada applicables aux appareils radio exempts de licence. L'exploitation est autorisée aux deux conditions suivantes : (1) l'appareil ne doit pas produire de brouillage, et (2) l'utilisateur de l'appareil doit accepter tout brouillage radioélectrique subi, même si le brouillage est susceptible d'en compromettre le fonctionnement.

For product available in the USA/Canada market, only channel 1~11 can be operated. Selection of other channels is not possible.

Pour les produits disponibles aux États-Unis / Canada du marché, seul le canal 1 à 11 peuvent être exploités. Sélection d'autres canaux n'est pas possible.

This device and it's antennas(s) must not be co-located or operating in conjunction with any other antenna or transmitter except in accordance with IC multi-transmitter product procedures.

Cet appareil et son antenne (s) ne doit pas être co-localisés ou fonctionnement en association avec une autre antenne ou transmetteur.

IMPORTANT NOTE:

IC Radiation Exposure Statement:

This equipment complies with IC RSS-102 radiation exposure limits set forth for an uncontrolled environment. This equipment should be installed and operated with minimum distance 23 cm between the radiator & your body.

Cet équipement est conforme aux limites d'exposition aux rayonnements IC établies pour un environnement non contrôlé. Cet équipement doit être installé et utilisé avec un minimum de 23 cm de distance entre la source de rayonnement et votre corps.

This radio transmitter (Model: DAP-3662A1) has been approved by Industry Canada to operate with the antenna types listed below with the maximum permissible gain and required antenna impedance for each antenna type indicated.

Antenna types not included in this list, having a gain greater than the maximum gain indicated for that type, are strictly prohibited for use with this device.

Le présent émetteur radio (Model: DAP-3662A1) a été approuvé par Industrie Canada pour fonctionner avec les types d'antenne énumérés ci-dessous et ayant un gain admissible maximal et l'impédance requise pour chaque type d'antenne. Les types d'antenne non inclus dans cette liste, ou dont le gain est supérieur au gain maximal indiqué, sont strictement interdits pour l'exploitation de l'émetteur.

Antenna list:

Ant.	Brand	P/N	Antenna Type	Connector	Gain (dBi)	
					2.4GHz	5GHz
1	Grand-Tek	OA-58-06-03	Embedded Antenna	I-PEX	-	6.2
2	Grand-Tek	OA-58-05-02	Embedded Antenna	I-PEX	-	6.2
3	Grand-Tek	OA-24-05-06	Embedded Antenna	I-PEX	6.1	-
4	Grand-Tek	OA-24-04-02	Embedded Antenna	I-PEX	4.8	-

Note: The EUT has four antennas.