



DCS-2136L



**Wireless N Day/Night Camera
with Color Night Vision**

Quick Install Guide

D-Link®

Package Contents



DCS-2136L Wireless N Day/Night Camera with Color Night Vision



Stand/Mounting Bracket



CAT5 Ethernet Cable



Power Adapter



Quick Install Guide

If any of the above items are missing, please contact your reseller.

Minimum Requirements

Computer with:

- PC with 1.3 GHz or above and at least 128 MB RAM
- Windows® 8, Windows® 7, Vista® or XP (32-bit or 64-bit)
- Mac OS® X 10.6 or higher

Web Browser:

- Internet Explorer® 7, Firefox 12, Safari 4, or Chrome 20 and above
- Installed and enabled Java and ActiveX® controls

Network Device and Service:

- A router (D-Link Cloud Router is recommended)
- An Internet connection
- An e-mail account (Required to register mydlink service)

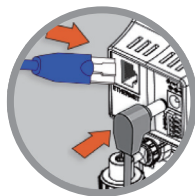
Setting up your Camera

Using a D-Link Cloud Router (Zero Configuration)

If you have a D-Link Cloud Router, you can take advantage of Zero Configuration Setup. This feature automatically configures your camera's settings for you and adds it to your mydlink account automatically. If you do not have a D-Link Cloud Router, refer to the next page to install and configure your camera.

Step 1

Connect the power cable and Ethernet cable to your cloud camera.



Step 2

Connect the other end of the Ethernet cable to your D-Link Cloud Router and connect the camera's power adapter to a power outlet.



Step 3

From any computer, open a web browser, go to <http://www.mydlink.com> and log in to your account.

Click on the device name when the new device notification appears to add the camera to your account.



If you wish to connect your camera to your router with a wireless connection, you can simply disconnect the Ethernet cable and move the camera to its intended location.

Using the Setup Wizard

If you do not have a D-Link Cloud Router, you can simply use any Windows or Mac computer to go through the Setup Wizard, which will guide you through the installation process from connecting your hardware to configuring your camera and registering it with your mydlink account.

Download the Setup Wizard from <http://www.mydlink.com/download>.

Click your camera model and then under *Wizard*, click the link of the version (Windows or Mac) you want to download. Depending on your web browser, you may need to right-click the link and select **Save link as**.

Windows Users - Extract ("unzip") the files to a folder on your computer and then double-click the **autorun.exe** file.

Mac Users - Download the Mac OS Setup Wizard. Open the **SetupWizard** file and launch the application.

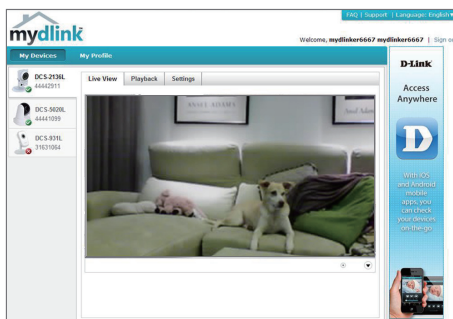
After about 20-30 seconds, the Setup Wizard will open. Follow the on-screen instructions.



Getting Started with mydlink

mydlink is a web-based service which allows you to view and control your mydlink-enabled devices through any computer connected to the Internet. If you have cameras linked to your mydlink account, you will be able to see their live views using the mydlink website. Follow the instructions below to access your mydlink account.

- Open a web browser on any computer connected to the Internet.
- Type **http://www.mydlink.com** in the address bar and press **Enter**.
- Sign in using your mydlink account.
- From the home screen, you will be able to view all devices which have been linked to your mydlink account.



- Ensure that your browser supports both Java and ActiveX, and that these features have been installed and enabled.
- Windows does not have Java installed by default. You can download the latest version from <http://www.java.com>.
- In Mac OS X 10.7.x, Java applets are disabled by default. To enable Java applets, click the Finder > Applications > Utilities > Java Preferences and check the Enable applet plug-in and Web Start applications option.
- The ActiveX® controls in IE will install automatically if needed. We suggest that you make sure that you have enabled the related options in Tools > Internet Options > Security > Custom Level.

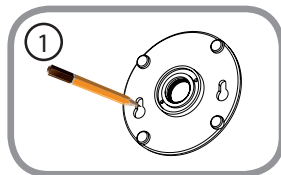
Mount the Camera

Please refer to the steps below to assist you with mounting the camera.

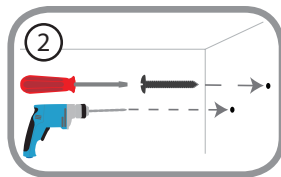


We suggest that you configure the camera before mounting.

1. Place the mounting base where you want to position the camera and use a pencil to mark the holes.

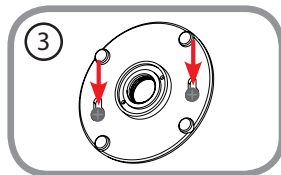


2. Depending on the material of the wall or ceiling, use proper tools to drill two holes or screws where you marked. If the wall is made out of concrete, drill the holes first, insert the plastic anchors and then the screws.

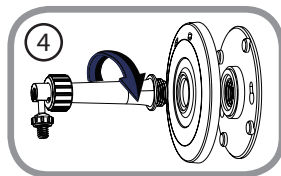


The space between the camera and the screwheads should be 3mm.

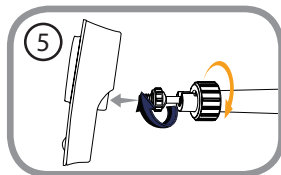
3. Place the mounting base over the screw that is mounted on the wall. Make sure to fit the screw-heads over the big holes and slide it downward to lock firmly. Lightly pull the base forward to make sure that it is locked.



4. Place the base cover on the base and screw the camera stem clockwise into the mounting base.



5. Adjust the angle of the camera as desired, then tighten the collar on the camera stem to lock it in place.



Download mydlink Lite/mydlink + Apps

mydlink Lite App (Free)

Search for “mydlink lite” to download and install the app on your smartphone or tablet when connected to the Internet. You can also find the app by scanning the QR code below with a QR code scan app.



System Requirements: iOS version 4.3 or above. Android version 2.1 or above.

mydlink+ App (Paid - Tablet Only)

Search for the word “mydlink+” to download and install the app on your tablet when connected to the Internet. You can also find the app by scanning the QR code below with a QR code scan app.



System Requirements: iOS version 4.3 or above. Android version 2.1 or above.

Technical Support

This guide is only for the first time configuration. Please refer to the user manual to learn more or visit <http://www.mydlink.com> for more information. Also feel free to contact us. U.S. and Canadian customers can contact D-Link Technical Support through our website.

USA



<http://support.dlink.com>

Canada



<http://support.dlink.ca>

D-Link[®]

Version 1.0
April 9, 2013
RMN0101032

Copyright ©2013 All rights reserved. D-Link and the D-Link logo are registered trademarks of D-Link Corporation or its subsidiaries. Other trademarks are the property of their respective owners. Maximum wireless signal rate derived from IEEE Standard 802.11g and 802.11n specifications. Actual data throughput will vary. Network conditions and environmental factors, including volume of network traffic, building materials and construction, and network overhead, lower actual data throughput rate. Environmental factors will adversely affect wireless signal range. Product specifications, size and shape are subject to change without notice, and actual product appearance may differ from that depicted on the packaging. Visit dlink.com (US) or dlink.ca (Canada) for more details.

FCC Notices

This device complies with Part 15 of the FCC Rules. Operation is subject to the following two conditions: (1) this device may not cause harmful interference, and (2) this device must accept any interference received, including interference that may cause undesired operation.

CAUTION: Change or modification not expressly approved by the party responsible for compliance could void the user's authority to operate this equipment.

This equipment has been tested and found to comply with the limits for a Class B digital device, pursuant to Part 15 of the FCC Rules. These limits are designed to provide reasonable protection against harmful interference in a residential installation. This equipment generates, uses and can radiate radio frequency energy and, if not installed and used in accordance with the instructions, may cause harmful interference to radio communications. However, there is no guarantee that interference will not occur in a particular installation. If this equipment does cause harmful interference to radio or television reception, which can be determined by turning the equipment off and on, the user is encouraged to try to correct the interference by one or more of the following measures:

- Reorient or relocate the receiving antenna.
- Increase the separation between the equipment and receiver.
- Connect the equipment into an outlet on a circuit different from that to which the receiver is connected.
- Consult the dealer or an experienced radio/TV technician for help.

CAUTION:

Any changes or modifications not expressly approved by the grantee of this device could void the user's authority to operate the equipment.

RF exposure warning

This equipment must be installed and operated in accordance with provided instructions and the antenna(s) used for this transmitter must be installed to provide a separation distance of at least 20 cm from all persons and must not be co-located or operating in conjunction with any other antenna or transmitter. End-users and installers must be provide with antenna installation instructions and transmitter operating conditions for satisfying RF exposure compliance."

For operation within 5.15 ~ 5.25GHz frequency range, it is restricted to indoor environment. This device meets all the other requirements specified in Part 15E, Section 15.407of the FCC Rules.

Canada Notices

Industry Canada regulatory information

This device complies with Industry Canada licence-exempt RSS standard(s). Operation is subject to the following two conditions: (1) this device may not cause interference, and (2) this device must accept any interference, including interference that may cause undesired operation of the device.

The user is cautioned that this device should be used only as specified within this manual to meet RF exposure requirements. Use of this device in a manner inconsistent with this manual could lead to excessive RF exposure conditions.

Le présent appareil est conforme aux CNR d'Industrie Canada applicables aux appareils radio exempts de licence. L'exploitation est autorisée aux deux conditions suivantes : (1) l'appareil ne doit pas produire de brouillage, et (2) l'utilisateur de l'appareil doit accepter tout brouillage radioélectrique subi, même si le brouillage est susceptible d'en compromettre le fonctionnement.

RF exposure warning

This equipment must be installed and operated in accordance with provided instructions and the antenna(s) used for this transmitter must be installed to provide a separation distance of at least 20 cm from all persons and must not be co-located or operating in conjunction with any other antenna or transmitter. End-users and installers must be provide with antenna installation instructions and transmitter operating conditions for satisfying RF exposure compliance."

Cet équipement doit être installé et utilisé conformément aux instructions fournies et de l'antenne (s) utilisé pour cet émetteur doit être installé pour fournir une distance de séparation d'au moins 20 cm de toute personne et ne doit pas être co-localisés ou fonctionnant en conjonction avec une autre antenne ou transmetteur. Les utilisateurs finaux et installateurs doivent être fournir des instructions d'installation de l'antenne et des conditions de fonctionnement du transmetteur de la conformité sur l'exposition aux RF

CAUTION:

The device for operation in the band 5150-5250 MHz is only for indoor use to reduce the potential for harmful interference to co-channel mobile satellite systems;

Avertissement:

Les dispositifs fonctionnant dans la bande 5 150-5 250 MHz sont réservés uniquement pour une utilisation à l'intérieur afin de réduire les risques de brouillage préjudiciable aux systèmes de satellites mobiles utilisant les mêmes canaux;