

USER MANUAL

DCS-930_A2

VERSION 1.0



Wireless N Day/Night Home Network Camera

D-Link[®]

SURVEILLANCE

Table of Contents

Product Overview	4	Setup > Video	22
Package Contents	4	Video Configuration	22
System Requirements	4	Setup > Audio	23
Introduction	5	Setup > Motion Detect	24
Features	6	Setup > Mail.....	25
Hardware Overview	7	Email Account.....	25
Front View.....	7	Time Schedule.....	26
Rear View	8	Setup > FTP.....	27
Installation	9	FTP Server	27
Hardware Installation.....	9	Time Schedule.....	28
Wireless Installation Considerations.....	DCS-930_A2	Setup > Time and Date.....	29
Starting the Camera Installation Wizard	11	Maintenance > Admin	30
WPS - Hardware Push Button Setup.....	12	Maintenance > System	31
Configuration	13	Maintenance > Firmware Upgrade	32
Using the Configuration Menu	13	Status > Device Info.....	33
Live Video	15	Status > Active User	34
Setup > Wizard	15	Using & Configuring the DCS-930_A2	35
Internet Connection Setup Wizard.....	16	Wireless Security	38
Network Setup	18	What is WEP?	38
Setup > Wireless.....	19	What is WPA?	39
Wireless Interface	19	Using & Configuring the DCS-930_A2 with a NAT	
Setup > DDNS	20	Router	40
Setup > Image Setup	21	Troubleshooting	47
Image Settings.....	21		

Wireless Basics 49

Networking Basics 54

 Check your IP address 54

 Statically Assign an IP address 55

Technical Specifications..... 56

Package Contents

- **DCS-930_A2** Network Camera
- CAT5 Ethernet Cable
- Power Adapter
- Manual and Software on CD
- Quick Install Guide
- Camera Stand

Note: Using a power supply with a different voltage than the one included with your product will cause damage and void the warranty for this product.

If any of the above items are missing, please contact your reseller.



System Requirements

- Computer with Microsoft Windows® 7, XP®, or Vista®
- PC with 1.3GHz or above; at least 128MB RAM
- Internet Explorer 6 or above , Firefox 3.5 or above, Safari 4
- Existing 10/100 Ethernet-based network or 802.11n wireless network

Introduction

Congratulations on your purchase of the DCS-930_A2 Network Camera. The DCS-930_A2 is a versatile and unique solution for your small office or home. Unlike a webcam, the DCS-930_A2 is a stand-alone system with a built-in CPU that transmits high quality video images for monitoring. The DCS-930_A2 can be remotely accessed, and controlled using a Web browser over the Intranet or Internet. The simple installation procedure and intuitive Web-based interface offer easy integration with your Ethernet/Fast Ethernet or 802.11n wireless network. The DCS-930_A2 also comes with remote monitoring capability for a complete and cost-effective home security solution.

Features

Simple to Use

The **DCS-930_A2** is a stand-alone system with a built-in CPU, requiring no special hardware or software such as PC frame grabber cards.

The **DCS-930_A2** supports both ActiveX mode for Internet Explorer and Java mode for other browsers such as Firefox® and Safari®.

Supports a Variety of Platforms

Supporting TCP/IP networking, HTTP, and other Internet related protocols. The **DCS-930_A2** can also be integrated easily into other Internet/Intranet applications because of its standards-based features.

802.11n Wireless or Ethernet/Fast Ethernet Support

The **DCS-930_A2** offers wireless 802.11n and Ethernet/Fast Ethernet connectivity, making the **DCS-930_A2** easy to integrate into your existing network environment. The **DCS-930_A2** works with a 10 Mbps Ethernet based network or 100 Mbps Fast Ethernet based network for traditional wired environments, and works with 802.11n routers or access points for added flexibility. The Site Survey feature also allows you to view and connect to any available wireless networks.

Web Configuration

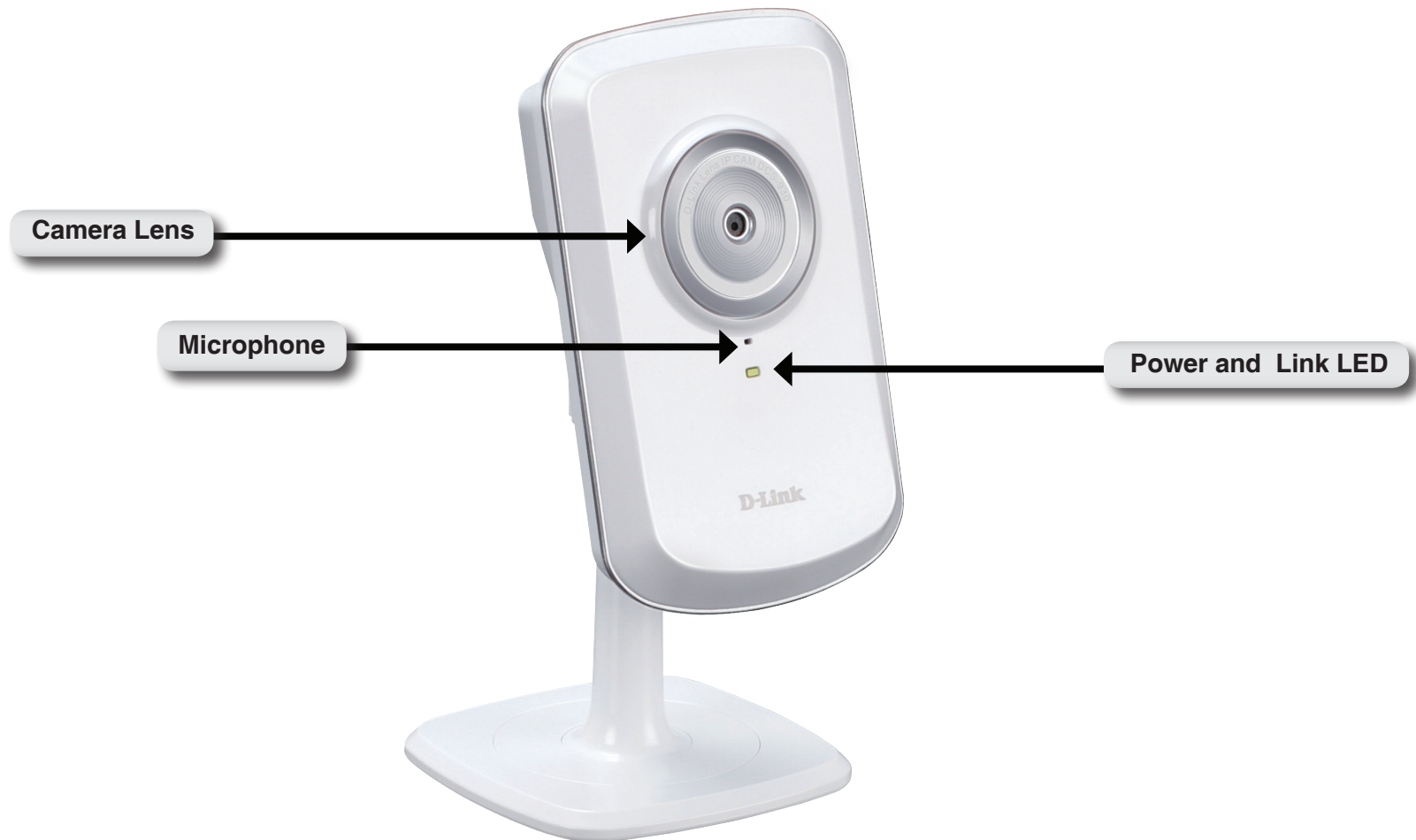
Using a standard Web browser, administrators can configure and manage the Network Camera directly from its own Web page via Intranet or Internet. This means you can access your **DCS-930_A2** anytime, anywhere in the world.

Broad Range of Applications

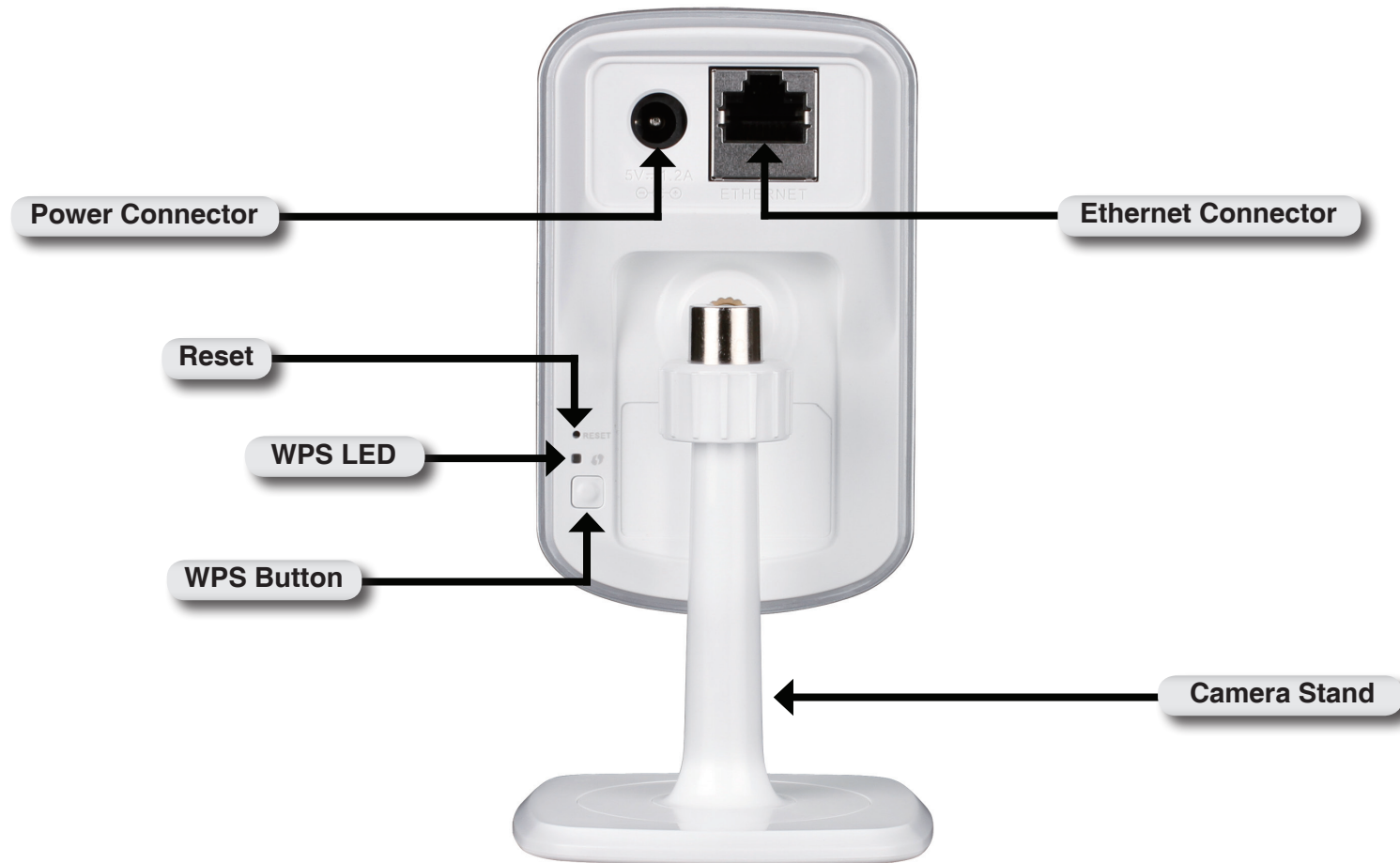
With today's high-speed Internet services, the Network Camera can provide the ideal solution for delivering live video images over the Intranet and Internet for remote monitoring. The Network Camera allows remote access using a Web browser for live image viewing, and allows the administrator to manage and control the Network Camera anytime, anywhere in the world. Many applications exist, including industrial and public monitoring of homes, offices, banks, hospitals, child-care centers, and amusement parks.

Hardware Overview

Front View



Rear View



Installation

Hardware Installation

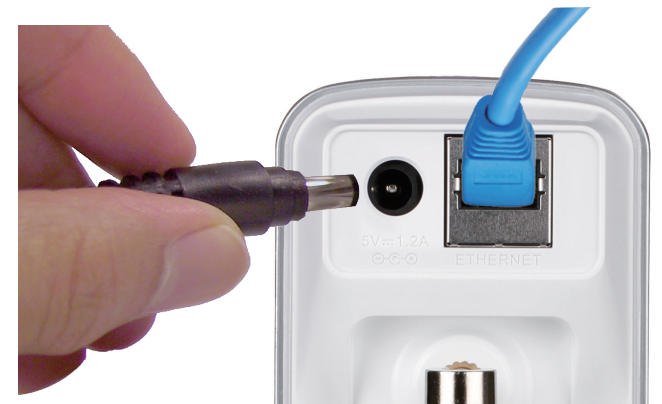
Connect the Ethernet Cable

Connect the included Ethernet cable to the network cable connector located on the bottom panel of the **DCS-930_A2** and attach it to the network.



Attach the External Power Supply

Attach the external power supply to the DC power input connector located on the bottom panel of the **DCS-930_A2** and connect it to your wall outlet or power strip. Power is confirmed when the green LED Power Indicator located below the lens on the **DCS-930_A2** is illuminated.



Wireless Installation Considerations

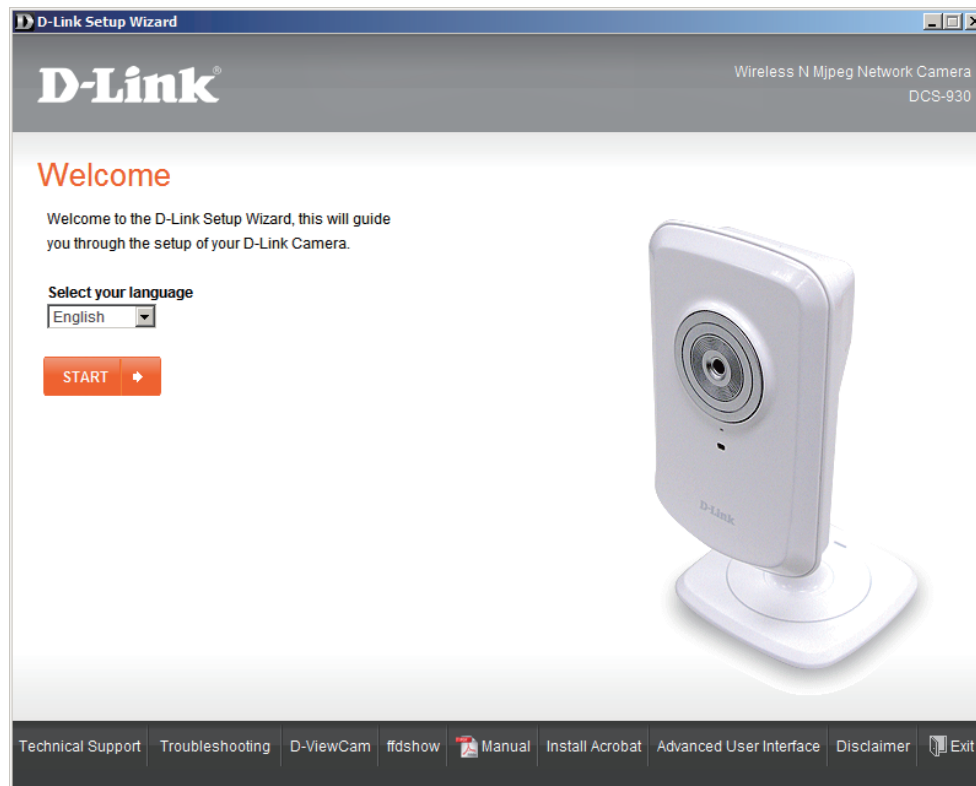
The D-Link Wireless Network Camera lets you access your network using a wireless connection from anywhere within the operating range of your wireless network. However, the number, thickness and location of walls, ceilings, or other objects that the wireless signals must pass through, may limit the range. Typical ranges vary depending on the types of materials and background RF (radio frequency) noise in your home or business. The key to maximizing wireless range is to follow these basic guidelines:

1. Minimize the number of walls and ceilings between your adapter and other network devices (such as your Network Camera) - each wall or ceiling can reduce your adapter's range from 3-90 feet (1-30 meters).
2. Be aware of the direct line between network devices. A wall that is 1.5 feet thick (.5 meters), at a 45-degree angle appears to be almost 3 feet (1 meter) thick. At a 2-degree angle, it looks over 42 feet (14 meters) thick. Position your devices so that the signal will travel straight through a wall or ceiling (instead of at an angle) for better reception.
3. Building Materials make a difference. A solid metal door or aluminum studs may weaken the wireless signal. Try to position your access points, wireless routers, and other networking devices where the signal passes through drywall or open doorways. Materials and objects such as glass, steel, metal, walls with insulation, water (fish tanks), mirrors, file cabinets, brick, and concrete will degrade your wireless signal.
4. Keep your product at least 3-6 feet or 1-2 meters away from electrical devices or appliances that generate RF noise.
5. If you are using 2.4GHz cordless phones or other radio frequency sources (such as microwave ovens), your wireless connection may degrade dramatically or drop completely. Make sure your 2.4GHz phone base is as far away from your wireless devices as possible. The base transmits a signal even if the phone is not in use.

Starting the Camera Installation Wizard

Insert the Installation CD-ROM into your computer's optical drive to start the autorun program.

The CD-ROM will open the Camera Installation Wizard. Simply click **Start** to go through the Installation Wizard, which will guide you through the installation process from connecting your hardware to configuring your camera.



WPS - Hardware Push Button Setup

Alternatively, you may create a WPS connect using the WPS Button on the back of the camera.

To create a WPS connection:

Step 1

Press and hold the WPS button on the side of the camera for three seconds. The blue WPS status LED above the button will blink.

Step 2

Press the WPS button on your router within 60 seconds. The WPS button is usually on the front or side of your router. On some routers, you may need to log in to the web interface and then click on an onscreen button to activate the WPS feature. If you are not sure where the WPS button is on your router, please refer to your router's User Manual.

The **DCS-930_A2** will automatically create a wireless connection to your router. While connecting, the green LED will flash and your camera will reboot.

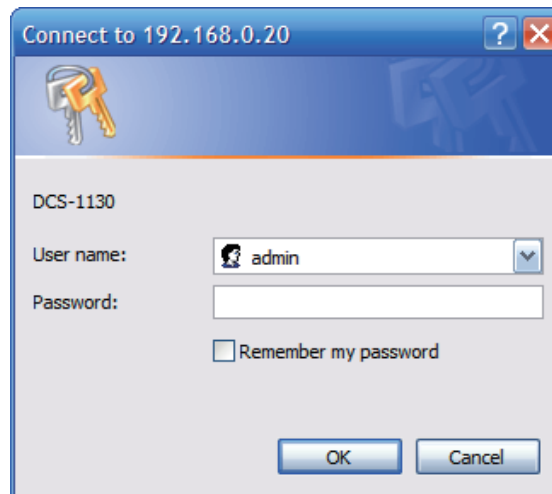


Configuration

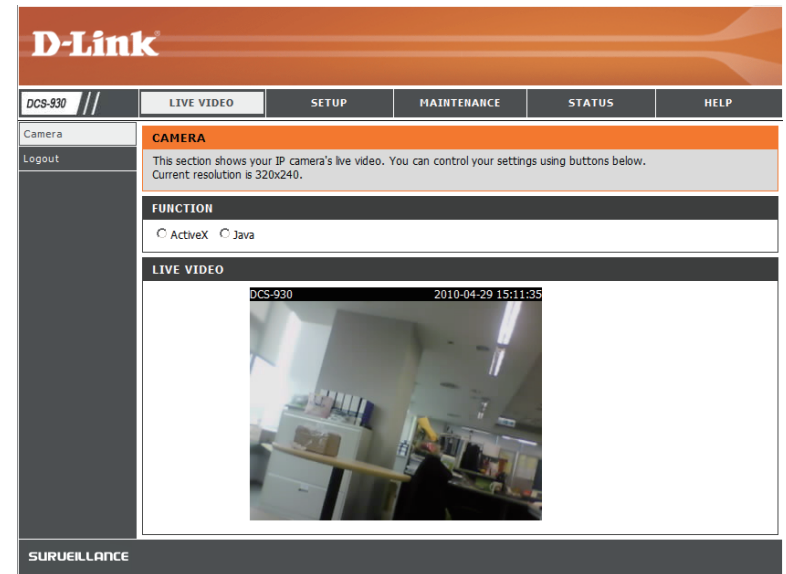
Using the Configuration Menu

After completing the Camera Installation Wizard, you are ready to use your camera. The camera's built-in Web configuration utility is designed to allow you to easily access and configure your **DCS-930_A2** at the end of the wizard, click **Go To Camera**, or enter the IP address of your camera into a web browser, such as Internet Explorer®. To log in, use the User name **admin** and the password you created in the Installation Wizard. If you did not create a password, the default password is blank. After entering your password, click **OK**.

Note: If you are directly connecting your PC to the camera, or if you are using the camera on a closed network, the default IP is **192.168.0.20**.



Click the **ActiveX** or **Java** radio button to view live video.



Please make sure that you have the latest version of Java application installed on your computer to ensure proper operation when viewing the video in Java mode. The Java application can be downloaded at no cost from Sun's web site. (<http://www.java.com>)

When you connect to the home page of your camera, you will be prompted to download ActiveX. If you want to use ActiveX to view your video images instead of Java, then you must download ActiveX.

Live Video

ActiveX: For Windows® Users that do not have Java installed, please choose this option to view video streaming on the Home page.

Java: For Windows® users that have Java installed, you can also use this for viewing video. Mac users must choose this mode to view video.

Setup > Wizard

You may choose to configure your network by using the **Internet Connection Setup Wizard** that includes step-by-step instructions. Otherwise, you may manually configure your connection using the **Manual Internet Connection Setup**.

