

# D-Link Quick Installation Guide



**DBT-900AP**  
D-Link PersonalAir™  
Bluetooth-to-LAN Access Point

## Check Your Package Contents

These are the items included with your DBT-900AP purchase:



- DBT-900AP Bluetooth-to-LAN Access Point



- Power Adapter



- RJ-45 LAN Cable

If any of the above items are missing, please contact your reseller.



## Connect the DBT-900AP Bluetooth Access Point to Your Network

### Straight up the antenna of the DBT-900AP

You may need to adjust the direction of the antenna to get better signal strength.

### Attach the External Power Supply for DBT-900AP

Attach the external power supply to the DC power input connector located on the rear panel of DBT-900AP and connect it to your local power supply. The **Power LED** will turn **ON** to indicate proper operation.

### Connecting DBT-900AP to Your Network

Insert one end of the cable to the **Ethernet port** on the back panel of the DBT-900AP and the other end of the cable to an **Ethernet Broadband Router** (i.e., D-Link DI-604) or **Switch** (i.e., D-Link DES-1005D) that supports DHCP Client function. The **LAN LED** light will illuminate to indicate a proper Ethernet connection.

***Note:** The Ethernet Port on DBT-900AP is Auto-MDI/MDIX. Meaning you can use a straight-through or crossover-Ethernet cable to connect to the Ethernet port on the DBT-900AP.*



## Connect Bluetooth-enabled computers to

## DBT-900AP

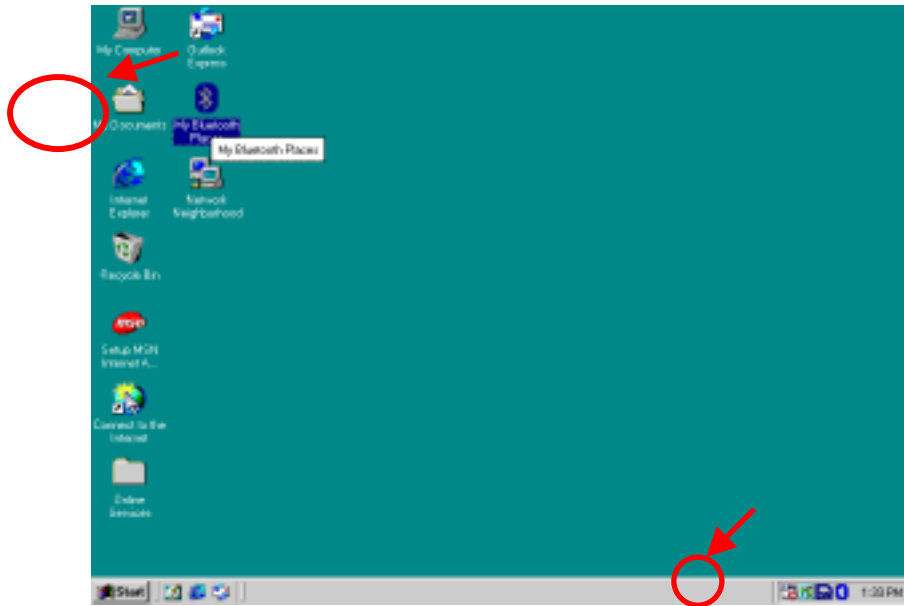
### Note:

This Access Point supports the state-of-the-art PAN profile. Please make sure if your Bluetooth Software installed in your computers or PDAs support this profile before this step.

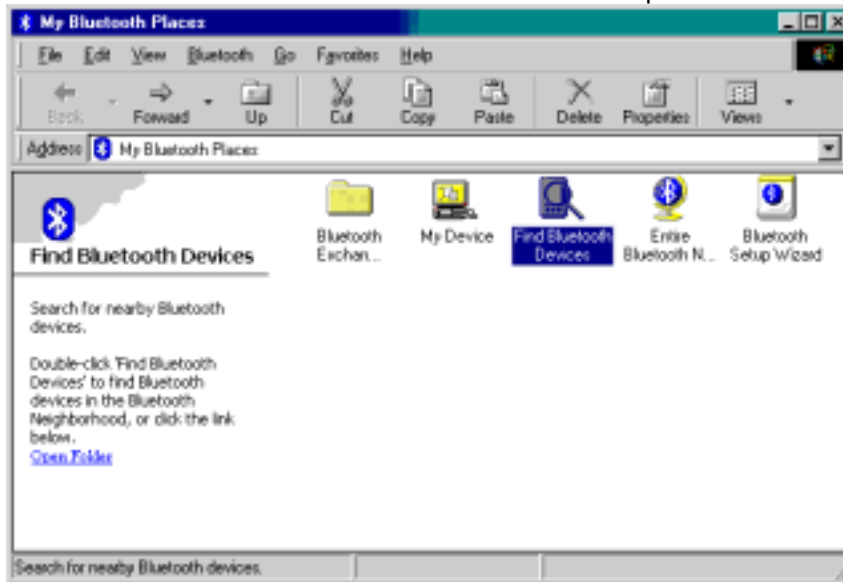
This Access Point does not need to install any specific driver; it requires the Bluetooth adapter (for example: D-Link DBT-120 USB Bluetooth Adapter) to be installed on the PC or laptop computer in order to access to the DBT-900AP wirelessly.

The step-by-step instructions that follow are shown with Widcomm Bluetooth Software (version 1.4 or above) that included with D-Link DBT-120 USB Bluetooth Adapter under Windows 98SE/ME/2000.

- Right-click to the “B” logo on the system tray and choose “Explorer” or double click “My Bluetooth Places” to open Bluetooth Adapter.



- Double-Click the “Find Bluetooth Devices” to have USB Bluetooth Adapter to find the DBT-900AP.

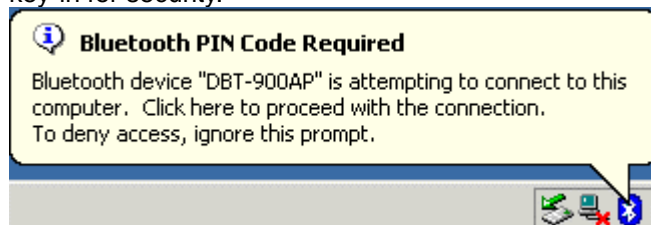


*Note: Before searching, please make sure the DBT-900AP is in the range, up to 20 meter, from DBT-120 D-Link USB Bluetooth Adapter.*

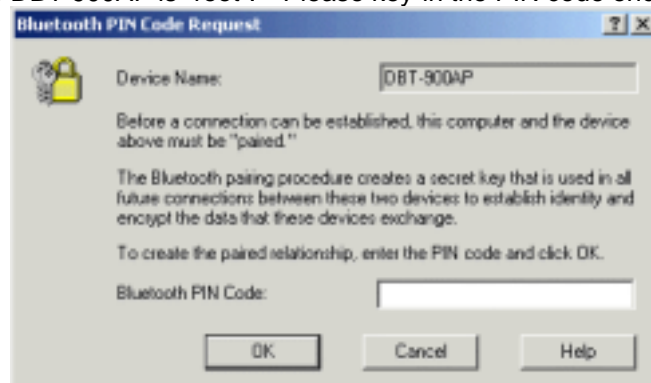
- Once the DBT-900AP is found by USB Bluetooth Adapter, double-click the icon of the unit.



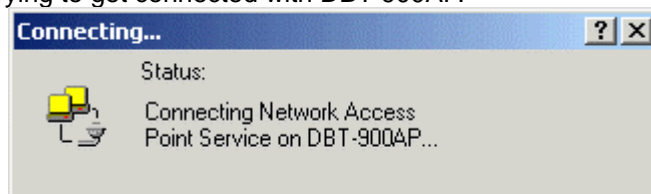
- Once the DBT-900AP is found by USB Bluetooth Adapter, double-click the icon of the unit. A PIN code would be required to be key-in for security.



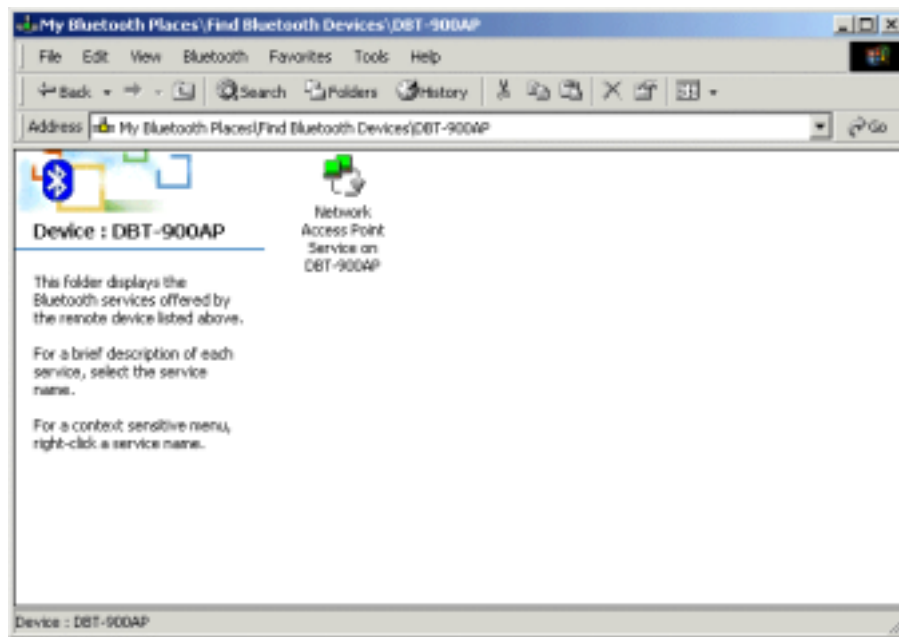
- The unique PIN code of DBT-900AP is "root". Please key-in the PIN code once the below window shown.



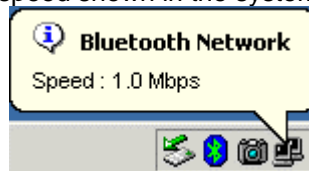
- Now your computer is trying to get connected with DBT-900AP.



- Once it's connected, the unit icon of DBT-900AP would be shown as below.



And there's a message of connection speed shown in the system tray.



Now you're ready to access Ethernet LAN resource, for example connect to Internet via router.

## Appendix – Specification

<b>Product Feature</b>	<ul style="list-style-type: none"> <li>● Bluetooth v1.1 (PAN Profile) compliant</li> <li>● Ethernet connection with DHCP assigned (DHCP Client)</li> <li>● 10/100 Mbps Ethernet LAN interface</li> <li>● Plug-and-Play, no driver required</li> <li>● LED indicators showing connectivity status</li> <li>● Security features providing authorization</li> <li>● Operation range up to 20 meters</li> <li>● Maximum seven users simultaneously access to Internet/ Intranet</li> </ul> <p><i>Note: Due to bandwidth consideration, it is strongly suggest there're 3 computers or Bluetooth-enabled devices to connect to this Bluetooth Data Access Point for achieving the best performance.</i></p>
<b>RF specification</b>	
Emission Type	Frequency Hopping Spread Spectrum (FHSS)
RF Frequency	2400-2483.5MHz Europe &USA (except France)
Output Power	-6 ~ +4dBm (class 2)
Modulation type	Gaussian Frequency Shift Keying (GFSK)
Frequency Hopping	1600hops/sec (625us/hop)
Receiving Sensitivity	-80dBm (class 2) BER 10E-3
Antenna	2dBi Dipole Antenna
<b>Hardware Specification</b>	
Power Voltage	DC 5 V 2A
Dimension	104 (L) x 63 (W) x 29 (H) mm
Weight	100 g
<b>LED Indicators on the Front Panel (from left to right)</b>	
Power LED/Red	Lights steadily when the unit is powered.
BT LED/Green	Flashes when the unit is receiving data via Bluetooth.
LAN LED/Green	Flashes when the unit is transferring/receiving data via LAN.
<b>Connectors on the Rear Panel</b>	
POWER Jack	For attach the power supply to outlet.
Reset button	Push for reboot
RJ-45 LAN Jack	For connecting to Ethernet LAN.

This device complies with part 15 of FCC Rules. Operation is subject to the following two conditions:

- (1) This device may not cause harmful interference, and
- (2) This device must accept any interference received, including interference that may cause undesired operation.

FCC RF Exposure requirements:

This device and its antenna(s) must not be co-located or operation in conjunction with any other antenna or transmitter.

NOTE: THE MANUFACTURER IS NOT RESPONSIBLE FOR ANY RADIO OR TV INTERFERENCE CAUSED BY UNAUTHORIZED MODIFICATIONS TO THIS EQUIPMENT. SUCH MODIFICATIONS COULD VOID THE USER'S AUTHORITY TO OPERATE THE EQUIPMENT.

email: [support@dlink.ca](mailto:support@dlink.ca)

**D-Link**<sup>®</sup>  
Building Networks for People