

# **D-Link *AirPlus* G™ DI-524**

**802.11g/ 2.4 GHz  
Wireless Router**

Manual

**D-Link®**

**Building Networks for People**

# Contents

Package Contents .....	3
Introduction.....	4
Wireless Basics .....	8
Getting Started .....	11
Using the Configuration Menu.....	12
Networking Basics .....	40
Troubleshooting.....	55
Technical Specifications .....	62
Frequently Asked Questions.....	65
Contacting Technical Support.....	93
Warranty and Registration.....	94

# Package Contents



## Contents of Package:

- **D-Link AirPlus G DI-524**  
802.11g/2.4GHz Wireless Router
- Switching 5V/1.2A Full-Range US Type
- Manual and Warranty on CD
- Quick Installation Guide
- Ethernet Cable (All the DI-524's Ethernet ports are Auto-MDIX)

*Note: Using a power supply with a different voltage rating than the one included with the DI-524 will cause damage and void the warranty for this product.*

If any of the above items are missing, please contact your reseller.

## System Requirements for Configuration:

- Ethernet-Based Cable or DSL Modem
- Computers with Windows, Macintosh, or Linux-based operating systems with an installed Ethernet adapter
- Internet Explorer Version 6.0 or Netscape Navigator Version 7.0 and Above

# Introduction

The D-Link *AirPlus G* DI-524 High-Speed Wireless Router is an 802.11g high-performance, wireless router that supports high-speed wireless networking at home, at work or in public places.

Unlike most routers, the DI-524 provides data transfers at up to 54 Mbps (compared to the standard 11 Mbps) when used with other D-Link *AirPlus G* products. The 802.11g standard is backwards compatible with 802.11b products. This means that you do not need to change your entire network to maintain connectivity. You may sacrifice some of 802.11g's speed when you mix 802.11b and 802.11g devices, but you will not lose the ability to communicate when you incorporate the 802.11g standard into your 802.11b network. You may choose to slowly change your network by gradually replacing the 802.11b devices with 802.11g devices .

In addition to offering faster data transfer speeds when used with other 802.11g products, the DI-524 has the newest, strongest, most advanced security features available today. When used with other 802.11g WPA (WiFi Protected Access) and 802.1x compatible products in a network with a RADIUS server, the security features include:

**WPA: Wi-Fi Protected Access** authorizes and identifies users based on a secret key that changes automatically at a regular interval. **WPA** uses **TKIP (Temporal Key Integrity Protocol)** to change the temporal key every 10,000 packets (a packet is a kind of message transmitted over a network.) This insures much greater security than the standard WEP security. (By contrast, the older WEP encryption required the keys to be changed manually.)

**802.1x: Authentication** is a first line of defense against intrusion. In the Authentication process the server verifies the identity of the client attempting to connect to the network. Unfamiliar clients would be denied access.

For home users that will not incorporate a RADIUS server in their network, the security for the DI-524, used in conjunction with other 802.11g products, will still be much stronger than ever before. Utilizing the **Pre Shared Key mode** of WPA, the DI-524 will obtain a new security key every time it connects to the 802.11g network. You only need to input your encryption information once in the configuration menu. No longer will you have to manually input a new WEP key frequently to ensure security, with the DI-524, you will automatically receive a new key every time you connect, vastly increasing the safety of your communications.

# Connections

All Ethernet Ports (WAN and LAN) are auto MDI/MDIX, meaning you can use either a straight-through or a crossover Ethernet cable.



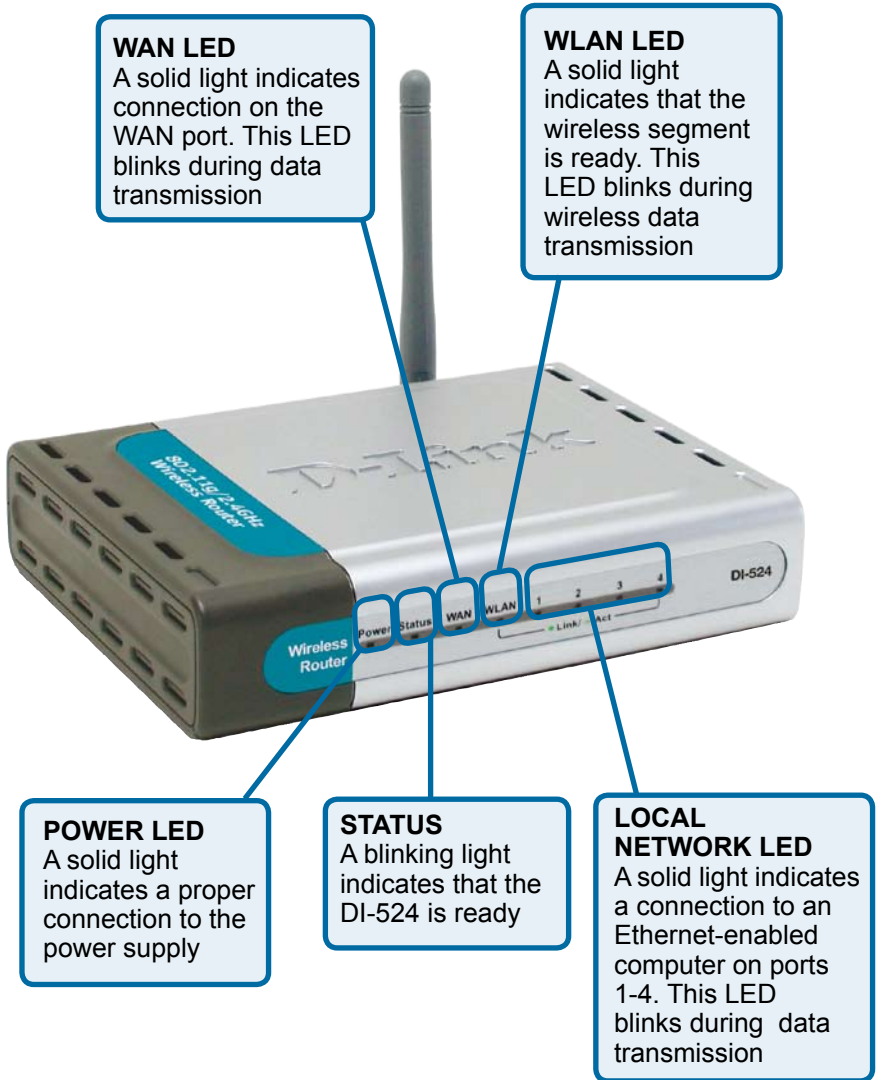
Pressing the **Reset Button** restores the router to its original factory default settings.

**Auto MDI/MDIX LAN ports** automatically sense the cable type when connecting to Ethernet-enabled computers.

The **Auto MDI/MDIX WAN** port is the connection for the Ethernet cable to the Cable or DSL modem

Receptor for the **Power Adapter**

# LEDs



# Features

- Fully compatible with the 802.11g standard to provide a wireless data rate of up to 54Mbps
- Backwards compatible with the 802.11b standard to provide a wireless data rate of up to 11Mbps
- **WPA** (Wi Fi Protected Access) authorizes and identifies users based on a secret key that changes automatically at a regular interval, for example:
  - **TKIP** (Temporal Key Integrity Protocol), in conjunction with a RADIUS server, changes the temporal key every 10,000 packets, ensuring greater security
  - **Pre Shared Key** mode means that the home user, without a RADIUS server, will obtain a new security key every time the he or she connects to the network, vastly improving the safety of communications on the network.
- 802.1x **Authentication** in conjunction with the RADIUS server verifies the identity of would be clients
- Utilizes **OFDM** technology (**O**rtogonal **F**requency **D**ivision **M**ultiplexing)
- User-friendly configuration and diagnostic utilities
- Operates in the 2.4GHz frequency range
- Connects multiple computers to a Broadband (Cable or DSL) modem to share the Internet connection
- Advanced Firewall features
  - Supports NAT with VPN pass-through, providing added security
  - MAC Filtering
  - IP Filtering
  - URL Filtering
  - Domain Blocking
  - Scheduling
- DHCP server supported enables all networked computers to automatically receive IP addresses
- Web-based interface for Managing and Configuring
- Access Control to manage users on the network
- Supports special applications that require multiple connections
- Equipped with 4 10/100 Ethernet ports, 1 WAN port, Auto MDI/MDIX

# Wireless Basics

D-Link wireless products are based on industry standards to provide easy-to-use and compatible high-speed wireless connectivity within your home, business or public access wireless networks. D-Link wireless products will allow you access to the data you want, when and where you want it. You will be able to enjoy the freedom that wireless networking brings.

A WLAN is a cellular computer network that transmits and receives data with radio signals instead of wires. WLANs are used increasingly in both home and office environments, and public areas such as airports, coffee shops and universities. Innovative ways to utilize WLAN technology are helping people to work and communicate more efficiently. Increased mobility and the absence of cabling and other fixed infrastructure have proven to be beneficial for many users.

Wireless users can use the same applications they use on a wired network. Wireless adapter cards used on laptop and desktop systems support the same protocols as Ethernet adapter cards.

*People use wireless LAN technology for many different purposes:*

**Mobility** - Productivity increases when people have access to data in any location within the operating range of the WLAN. Management decisions based on real-time information can significantly improve worker efficiency.

**Low Implementation Costs** – WLANs are easy to set up, manage, change and relocate. Networks that frequently change can benefit from WLANs ease of implementation. WLANs can operate in locations where installation of wiring may be impractical.

**Installation and Network Expansion** - Installing a WLAN system can be fast and easy and can eliminate the need to pull cable through walls and ceilings. Wireless technology allows the network to go where wires cannot go - even outside the home or office.

**Scalability** – WLANs can be configured in a variety of topologies to meet the needs of specific applications and installations. Configurations are easily changed and range from peer-to-peer networks suitable for a small number of users to larger infrastructure networks to accommodate hundreds or thousands of users, depending on the number of wireless devices deployed.

**Inexpensive Solution** - Wireless network devices are as competitively priced as conventional Ethernet network devices.



## Wireless Basics (continued)

### Standards-Based Technology

The DI-524 Wireless Broadband Router utilizes the new **802.11g** standard.

The IEEE **802.11g** standard is an extension of the 802.11b standard. It increases the data rate up to 54 Mbps within the 2.4GHz band, utilizing **OFDM technology**.

This means that in most environments, within the specified range of this device, you will be able to transfer large files quickly or even watch a movie in MPEG format over your network without noticeable delays. This technology works by transmitting high-speed digital data over a radio wave utilizing **OFDM (Orthogonal Frequency Division Multiplexing)** technology. **OFDM** works by splitting the radio signal into multiple smaller sub-signals that are then transmitted simultaneously at different frequencies to the receiver. **OFDM** reduces the amount of **crosstalk** (interference) in signal transmissions.

The DI-524 is backwards compatible with 802.11b devices. This means that if you have an existing 802.11b network, the devices in that network will be compatible with 802.11g devices at speeds of up to 11Mbps in the 2.4GHz range.

## Wireless Basics (continued)

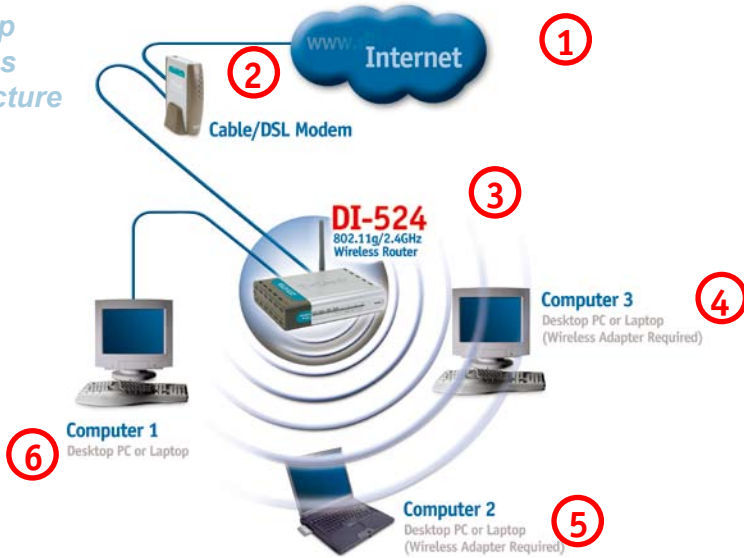
### Installation Considerations

The D-Link *AirPlus G* DI-524 lets you access your network, using a wireless connection, from virtually anywhere within its operating range. Keep in mind, however, that the number, thickness and location of walls, ceilings, or other objects that the wireless signals must pass through, may limit the range. Typical ranges vary depending on the types of materials and background RF (radio frequency) noise in your home or business. The key to maximizing wireless range is to follow these basic guidelines:

- 1** Keep the number of walls and ceilings between the DI-524 and other network devices to a minimum - each wall or ceiling can reduce your D-Link wireless product's range from 3-90 feet (1-30 meters.) Position your devices so that the number of walls or ceilings is minimized.
- 2** Be aware of the direct line between network devices. A wall that is 1.5 feet thick (.5 meters), at a 45-degree angle appears to be almost 3 feet (1 meter) thick. At a 2-degree angle it looks over 42 feet (14 meters) thick! Position devices so that the signal will travel straight through a wall or ceiling (instead of at an angle) for better reception.
- 3** Building Materials can impede the wireless signal - a solid metal door or aluminum studs may have a negative effect on range. Try to position wireless devices and computers with wireless adapters so that the signal passes through drywall or open doorways and not other materials.
- 4** Keep your product away (at least 3-6 feet or 1-2 meters) from electrical devices or appliances that generate extreme RF noise.

# Getting Started

## Setting up a Wireless Infrastructure Network



*Please remember that D-Link AirPlus G wireless devices are pre-configured to connect together, right out of the box, with their default settings.*

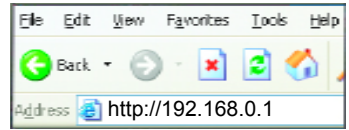
**For a typical wireless setup at home (as shown above), please do the following:**

- 1** You will need broadband Internet access (a Cable or DSL-subscriber line into your home or office)
- 2** Consult with your Cable or DSL provider for proper installation of the modem
- 3** Connect the Cable or DSL modem to the DI-524 Wireless Broadband Router (see the printed Quick Installation Guide included with your router.)
- 4** If you are connecting a desktop computer to your network, install the D-Link AirPlus G DWL-G510 wireless PCI adapter into an available PCI slot on your desktop computer. You may also install the DWL-G510, or the DWL-520. (See the printed Quick Installation Guide included with the network adapter.)
- 5** Install the D-Link DWL-G630 wireless Cardbus adapter into a laptop computer. (See the printed Quick Installation Guide included with the DWL-G630.)
- 6** Install the D-Link DFE-530TX+ adapter into a desktop computer. The four Ethernet LAN ports of the DI-524 are Auto MDI/MDIX and will work with both Straight-Through and Cross-Over cable. (See the printed Quick Installation Guide included with the DFE-530TX+.)

# Using the Configuration Menu

Whenever you want to configure your network or the DI-524, you can access the Configuration Menu by opening the web-browser and typing in the IP Address of the DI-524. The DI-524 default IP Address is shown at right:

- Open the web browser
- Type in the **IP Address** of the Router (<http://192.168.0.1>)



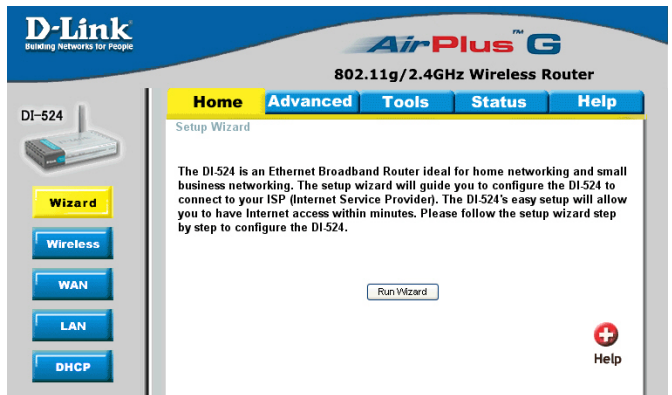
*Note: if you have changed the default IP Address assigned to the DI-524, make sure to enter the correct IP Address.*

- Type **admin** in the **User Name** field
- Leave the **Password** blank
- Click **OK**



## Home > Wizard

The Home>Wizard screen will appear. Please refer to the *Quick Installation Guide* for more information regarding the Setup Wizard.



These buttons appear on most of the configuration screens in this section. Please click on the appropriate button at the bottom of each screen after you have made a configuration change.



Apply

Clicking **Apply** will save changes made to the page



Cancel

Clicking **Cancel** will clear changes made to the page



Help

Clicking **Help** will bring up helpful information regarding the page

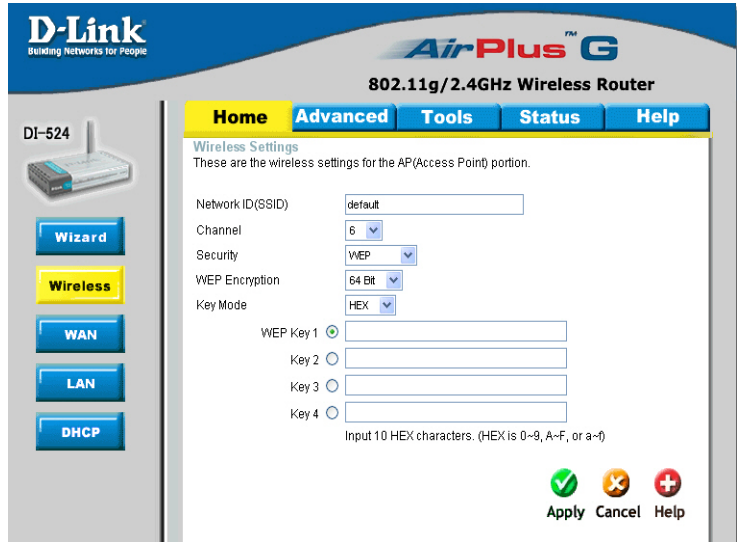


Restart

Clicking **Restart** will restart the router. (Necessary for some changes.)

# Using the Configuration Menu (continued)

Home > Wireless



**Network ID(SSID)-** Service Set Identifier (SSID) is the name designated for a specific wireless local area network (WLAN). The SSID's factory default setting is **default**. The SSID can be easily changed to connect to an existing wireless network or to establish a new wireless network.

**Channel-** **6** is the default channel. All devices on the network must share the same channel. (Note: The wireless adapters will automatically scan and match the wireless setting.)

**Security-** Select None, WEP, 802.1X, WPA-PSK or WPA. None is the default setting. (Note: if you enable encryption on the DI-524, please make sure that you also enable encryption on all the wireless clients, or wireless connection will not be established.)

**WEP Encryption-** Select the level of encryption desired: 64-bit, or 128-bit

**Key Mode-** Select **HEX** or **ASCII**

**Keys 1-4-** Input up to 4 WEP keys; select the one you wish to use.

# Using the Configuration Menu (continued)

## Home > WAN > Dynamic IP Address

The screenshot shows the configuration page for a D-Link AirPlus G 802.11g/2.4GHz Wireless Router. The page is titled "Home > WAN > Dynamic IP Address". On the left side, there is a navigation menu with buttons for "Wizard", "Wireless", "WAN" (highlighted in yellow), "LAN", and "DHCP". The main content area is titled "WAN Settings" and contains the following options:

- Dynamic IP Address: Choose this option to obtain an IP address automatically from your ISP. (For most Cable modem users)
- Static IP Address: Choose this option to set static IP information provided to you by your ISP.
- PPPoE: Choose this option if your ISP uses PPPoE. (For most DSL users)
- Others: PPTP, BigPond Cable, L2TP and Tella.

Below these options, there is a section for "Dynamic IP Address" with the following fields and controls:

- Host Name: [ ] (Optional)
- MAC Address: [00] [50] [18] [21] [B7] [53] with a "Clone MAC Address" button below it.
- Primary DNS Address: [0.0.0.0]
- Secondary DNS Address: [0.0.0.0]
- MTU: [1500]
- Auto-reconnect:  Enabled  Disabled

At the bottom right, there are three buttons: "Apply" (with a green checkmark), "Cancel" (with a yellow X), and "Help" (with a red plus sign).

**Dynamic IP Address-**

Choose Dynamic IP Address to obtain IP Address information automatically from your ISP. Select this option if your ISP does not give you any IP numbers to use. This option is commonly used for Cable modem services.

**Host Name-**

The Host Name is optional but may be required by some ISPs. The default host name is the device name of the Router and may be changed.

**MAC Address-**

The default MAC Address is set to the WAN's physical interface MAC address on the Broadband Router. It is not recommended that you change the default MAC address unless required by your ISP.

**Clone MAC Address-**

The default MAC address is set to the WAN's physical interface MAC address on the Broadband Router. You can use the "Clone MAC Address" button to copy the MAC address of the Ethernet Card installed by your ISP and replace the WAN MAC address with the MAC address of the router. It is not recommended that you change the default MAC address unless required by your ISP.

**Primary/ Secondary DNS Address-**

Enter a DNS Address if you do not wish to use the one provided by your ISP.

**MTU-**

Enter an MTU value only if required by your ISP. Otherwise, leave it a the default setting.

**Auto-reconnect-**

Select **Enabled** or **Disabled**.

# Using the Configuration Menu (continued)

## Home > WAN > Static IP Address

The screenshot shows the configuration interface for a D-Link AirPlus G 802.11g/2.4GHz Wireless Router. The page is titled "Static IP Address" and is part of the "WAN Settings" section. The "Home" tab is selected, and the "Static IP Address" option is chosen. The interface includes a sidebar with navigation buttons for Wizard, Wireless, WAN (highlighted), LAN, and DHCP. The main content area contains the following fields and options:

- WAN Settings:** Please select the appropriate option to connect to your ISP.
  - Dynamic IP Address: Choose this option to obtain an IP address automatically from your ISP. (For most Cable modem users)
  - Static IP Address: Choose this option to set static IP information provided to you by your ISP.
  - PPPoE: Choose this option if your ISP uses PPPoE. (For most DSL users)
  - Others: PPTP, BigPond Cable, L2TP and Telia.
- Static IP Address:**
  - IP Address:
  - Subnet Mask:
  - ISP Gateway Address:
  - Primary DNS Address:
  - Secondary DNS Address:
  - MTU:

At the bottom right, there are three buttons: "Apply" (with a green checkmark), "Cancel" (with a yellow X), and "Help" (with a red plus sign).

**Static IP Address-** Choose Static IP Address if all WAN IP information is provided to you by your ISP. You will need to enter in the IP address, subnet mask, gateway address, and DNS address(es) provided to you by your ISP. Each IP address entered in the fields must be in the appropriate IP form, which are four octets separated by a dot (x.x.x.x). The Router will not accept the IP address if it is not in this format.

**IP Address-** Input the public IP Address provided by your ISP

**Subnet Mask-** Input your Subnet mask. (All devices in the network must have the same subnet mask.)

**ISP Gateway Address-** Input the public IP address of the ISP to which you are connecting

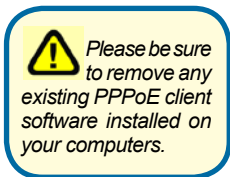
**Primary DNS Address-** Input the primary DNS (Domain Name Server) IP address provided by your ISP

**Secondary DNS Address-** This is optional

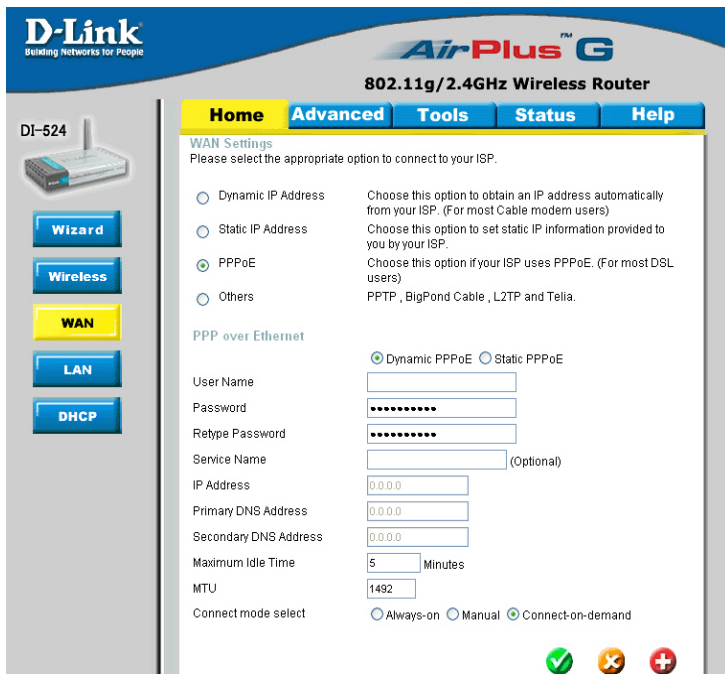
**MTU-** Enter an MTU value only if required by your ISP. Otherwise, leave it at the default setting.

# Using the Configuration Menu (continued)

Home > WAN > PPPoE



Choose PPPoE (Point to Point Protocol over Ethernet) if your ISP uses a PPPoE connection. Your ISP will provide you with a username and password. This option is typically used for DSL services. Select Dynamic PPPoE to obtain an IP address automatically for your PPPoE connection. Select Static PPPoE to use a static IP address for your PPPoE connection.



## PPPoE-

Choose this option if your ISP uses PPPoE. (Most DSL users will select this option.)

**Dynamic PPPoE-** receive an IP Address automatically from your ISP.

**Static PPPoE-**you have an assigned (static) IP Address.

## User Name-

Your PPPoE username provided by your ISP.

## Retype Password-

Re-enter the PPPoE password

## Service Name-

Enter the Service Name provided by your ISP (optional).

## IP Address-

This option is only available for Static PPPoE. Enter the static IP Address for the PPPoE connection.

## Primary DNS Address-

Primary DNS IP address provided by our ISP

## Secondary DNS Address-

This option is only available for Static PPPoE. Enter the static IP Address for the PPPoE connection.

(Continued on the next page)



# Using the Configuration Menu (continued)

Home > WAN > PPPoE *continued*

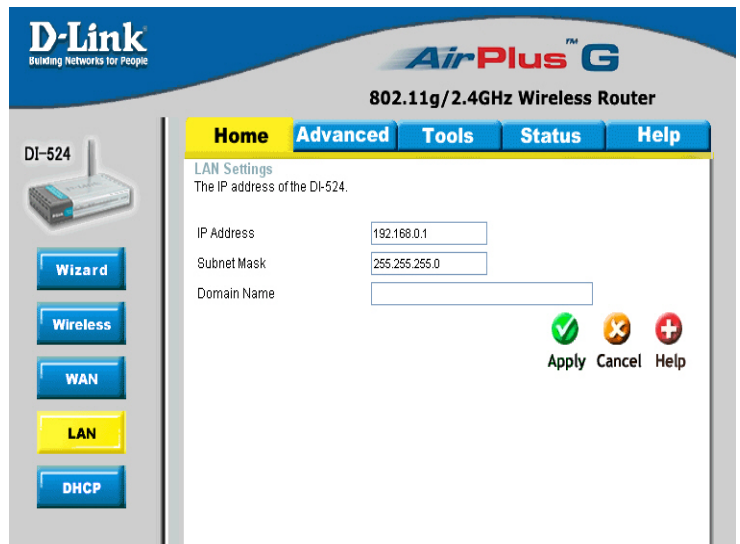
**MTU-**

Maximum Transmission Unit-1492 is the default setting-you may need to change the MTU for optimal performance with your specific ISP.

**Auto-reconnect-**

If enabled, the DI-524 will automatically connect to your ISP after your system is restarted or if the PPPoE connection is dropped.

Home > LAN



LAN is short for Local Area Network. This is considered your internal network. These are the IP settings of the LAN interface for the DI-524. These settings may be referred to as Private settings. You may change the LAN IP address if needed. The LAN IP address is private to your internal network and cannot be seen on the Internet.

**IP Address-**

The IP address of the LAN interface. The default IP address is: **192.168.0.1**

**Subnet Mask-**

The subnet mask of the LAN interface.  
The default subnet mask is **255.255.255.0**

**Local Domain-Name-**

This field is optional. Enter in the local domain name.

# Using the Configuration Menu (continued)

## Home > DHCP

**D-Link**  
Building Networks for People

**AirPlus™ G**  
802.11g/2.4GHz Wireless Router

DI-524

**Home** | Advanced | Tools | Status | Help

**DHCP Server**  
The DI-524 can be setup as a DHCP Server to distribute IP addresses to the LAN network.

DHCP Server  Enabled  Disabled

Starting IP Address 192.168.0.100

Ending IP Address 192.168.0.199

Lease Time 1 WEEK

**Static DHCP**  
Static DHCP is used to allow DHCP server to assign same IP to specific MAC address.

Enabled  Disabled

Name

IP Address 192.168.0.

MAC Address

DHCP Client -- select one -- Clone

Apply Cancel Help

**Static DHCP Clients List**

Name	IP Address	MAC Address
------	------------	-------------

**Dynamic DHCP Clients List**

HostName	IP Address	MAC Address	Expired Time
----------	------------	-------------	--------------

**DHCP** stands for *Dynamic Host Control Protocol*. The DI-524 has a built-in DHCP server. The DHCP Server will automatically assign an IP address to the computers on the LAN/private network. Be sure to set your computers to be DHCP clients by setting their TCP/IP settings to “Obtain an IP Address Automatically.” When you turn your computers on, they will automatically load the proper TCP/IP settings provided by the DI-524. The DHCP Server will automatically allocate an unused IP address from the IP address pool to the requesting computer. You must specify the starting and ending address of the IP address pool.

### DHCP Server-

Select **Enabled** or **Disabled**. The **default** setting is **Enabled**.

### Starting IP Address-

The starting IP address for the DHCP server’s IP assignment

### Ending IP Address-

The ending IP address for the DHCP server’s IP assignment

### Lease Time-

The length of time for the IP lease. Enter the Lease time. The default setting is one hour

# Using the Configuration Menu (continued)

## Advanced > Virtual Server

**D-Link**  
Building Networks for People

**AirPlus™ G**  
802.11g/2.4GHz Wireless Router

DI-524

Virtual Server

Application

Filter

Firewall

DDNS

DMZ

Performance

Home Advanced Tools Status Help

Virtual Server  
Virtual Server is used to allow Internet users access to LAN services.

Enabled  Disabled

Name

Private IP 192.168.0.

Protocol Type TCP

Private Port

Public Port

Schedule  Always

From Time :00:00 To :00:00  
day Sun to Sun

Apply Cancel Help

Virtual Server List

Name	Private IP	Protocol	Schedule		
<input type="checkbox"/> Virtual Server FTP	0.0.0.0	TCP 21 / 21	always	<input type="checkbox"/>	<input type="checkbox"/>
<input type="checkbox"/> Virtual Server HTTP	0.0.0.0	TCP 80 / 80	always	<input type="checkbox"/>	<input type="checkbox"/>
<input type="checkbox"/> Virtual Server HTTPS	0.0.0.0	TCP 443 / 443	always	<input type="checkbox"/>	<input type="checkbox"/>
<input type="checkbox"/> Virtual Server DNS	0.0.0.0	UDP 53 / 53	always	<input type="checkbox"/>	<input type="checkbox"/>

The DI-524 can be configured as a virtual server so that remote users accessing Web or FTP services via the public IP address can be automatically redirected to local servers in the LAN (Local Area Network).

The DI-524 firewall feature filters out unrecognized packets to protect your LAN network so all computers networked with the DI-524 are invisible to the outside world. If you wish, you can make some of the LAN computers accessible from the Internet by enabling *Virtual Server*. Depending on the requested service, the DI-524 redirects the external service request to the appropriate server within the LAN network.

The DI-524 is also capable of port-redirection meaning incoming traffic to a particular port may be redirected to a different port on the server computer.

Each virtual service that is created will be listed at the bottom of the screen in the Virtual Servers List. There are pre-defined virtual services already in the table. You may use them by enabling them and assigning the server IP to use that particular virtual service.

# Using the Configuration Menu (continued)

## Advanced > Virtual Server *continued*

<b>Virtual Server-</b>	Select <b>Enabled</b> or <b>Disabled</b>
<b>Name-</b>	Enter the name referencing the virtual service
<b>Private IP-</b>	The server computer in the LAN (Local Area Network) that will be providing the virtual services.
<b>Protocol Type-</b>	The protocol used for the virtual service
<b>Private Port-</b>	The port number of the service used by the Private IP com-
<b>Public Port-</b>	The port number on the WAN (Wide Area Network) side that will be used to access the virtual service.
<b>Schedule-</b>	The schedule of time when the virtual service will be enabled. The schedule may be set to <b>Always</b> , which will allow the particular service to always be enabled. If it is set to <b>Time</b> , select the time frame for the service to be enabled. If the system time is outside of the scheduled time, the service will be disabled.

**Example #1:** If you have a Web server that you wanted Internet users to access at all times, you would need to enable it. Web (HTTP) server is on LAN (Local Area Network) computer 192.168.0.25. HTTP uses port 80, TCP.  
Name: Web Server  
Private IP: 192.168.0.25  
Protocol Type: TCP  
Private Port: 80  
Public Port: 80  
Schedule: always