

# DGE-530T 32-bit Gigabit Network Adapter

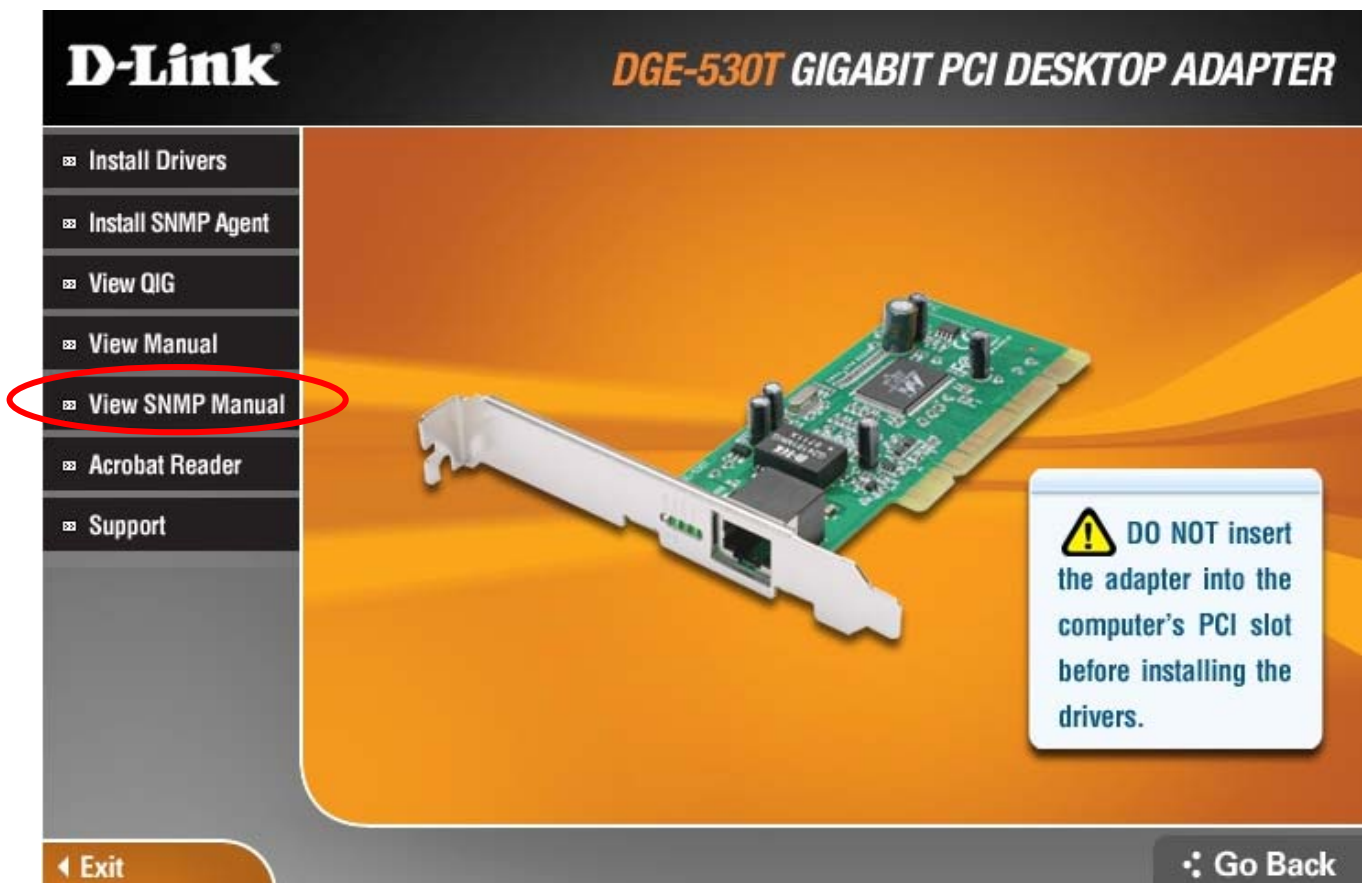
## SNMP Agent Manual

Use this guide to install and use the SNMP Agent on a PC equipped with the DGE-530T adapter.

# 1 Installing the SNMP Agent

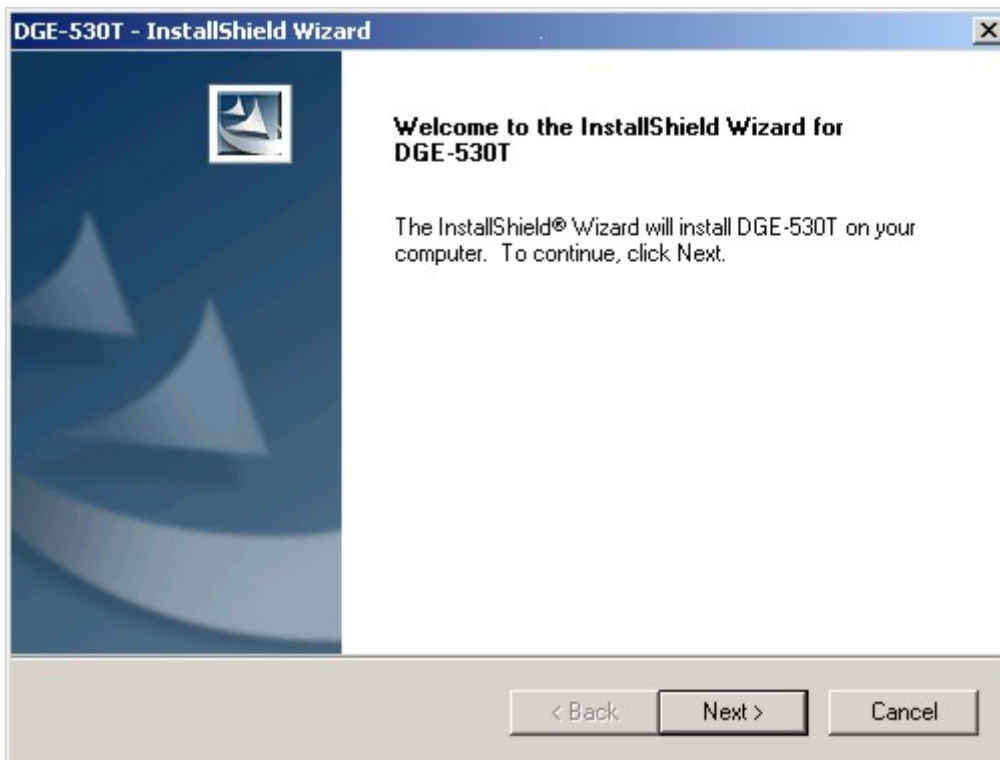
Follow these steps to install the SNMP Agent on the PC on which the DGE-530T adapter and driver had already been installed that is running Microsoft Windows 2000, Windows Server 2003, Windows Server 2003 x64 Edition, Windows XP or XP 64bit operating system. The SNMP Agent includes MIB files used for device management using a MIB browser.

1. Insert the CD-ROM included with the DGE-530T. The DGE-530T installer menu appears on the desktop. Click **Install SNMP Agent** to launch the InstallShield® Wizard setup program.

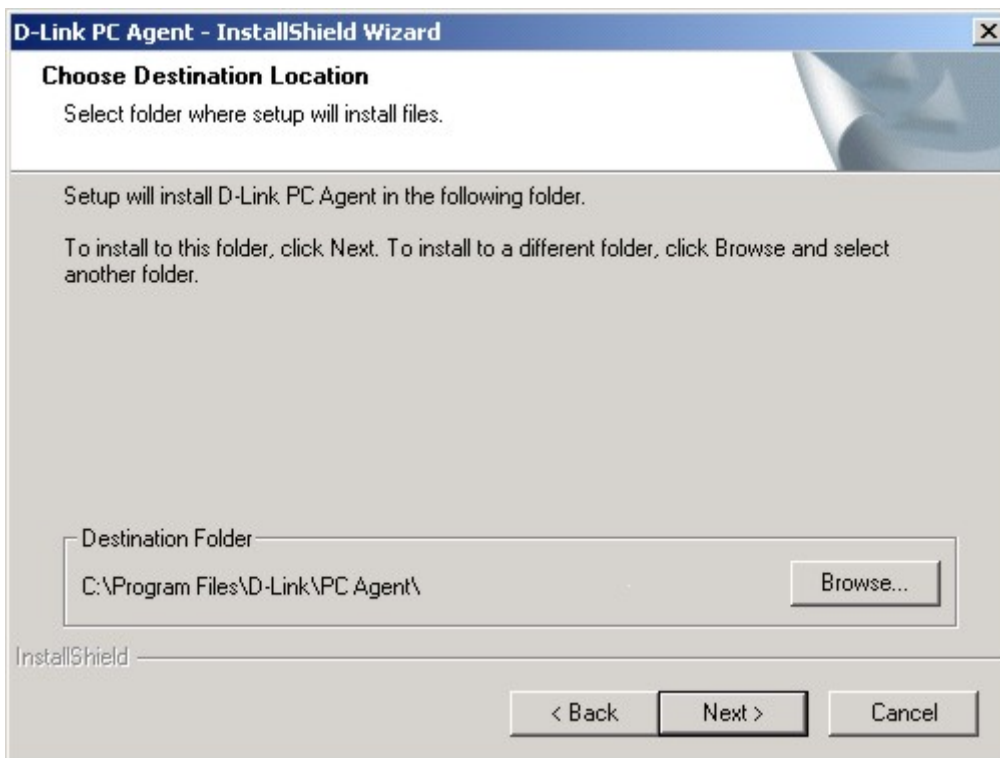


## Installing the SNMP Agent (continued)

2. Click **Next** to continue with the installation.

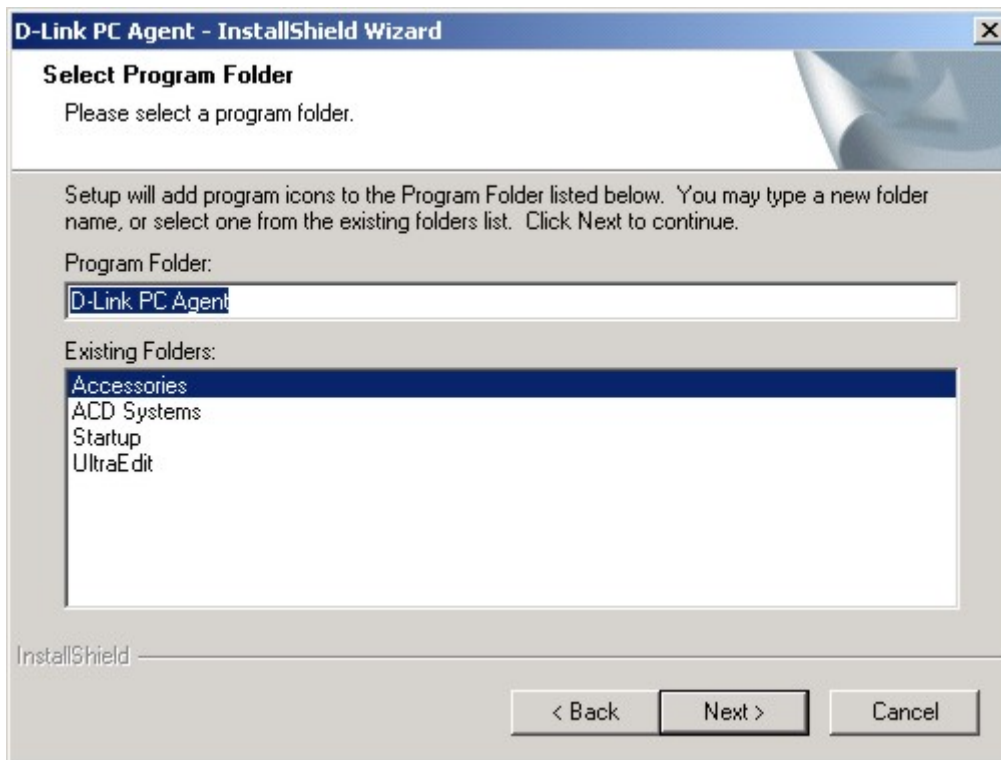


3. Select the location for the agent. The default location is in the Program File folder. To select a different location, click **Browse** and find the preferred location or type a complete file name and path in the Browse menu. To continue click **Next**.



## Installing the SNMP Agent (continued)

4. Select the Program Folder in which the file will be located and click **Next**.



5. The InstallShield will transfer the files needed for installation to the PC. It will be necessary to restart the system to use the program. To restart now, make sure the “... **restart my computer now**” option is selected and click **Finish**. To restart later, select “**No, I will restart my computer later**” and click **Finish**.



# 2

## Using the SNMP Agent

The SNMP Agent will launch automatically after it has been installed and the system has rebooted. Automatic launch of the SNMP Agent for Windows start up can be enabled or disabled as desired.

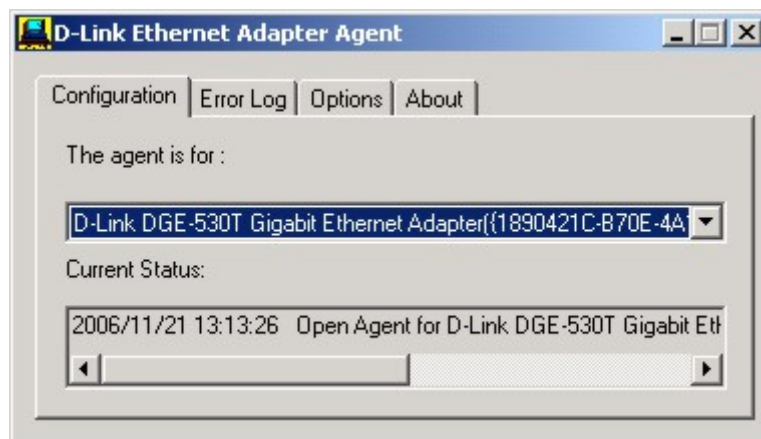
When the SNMP Agent is active, a MIB browser can be used for device management. These MIB files are located in the D-Link PC Agent folder. The three MIB files are included with the SNMP Agent are named:

- dlk\_pc.mib
- RFC1213-MIB(DLK).mib
- Transmission.mib

A dialog box appears asking to select the default adapter card used with the PC Agent program. The DGE-530T adapter will be selected automatically if it is the only adapter used for the system. If multiple adapters are present, select the DGE-530T from the drop down list and click **OK**. The **D-Link Ethernet Adapter Agent** menu appears with the **Configuration** tab displayed.



**NOTE:** The drop-down menu in the Configuration tab lists any installed adapters capable of using the SNMP Agent.



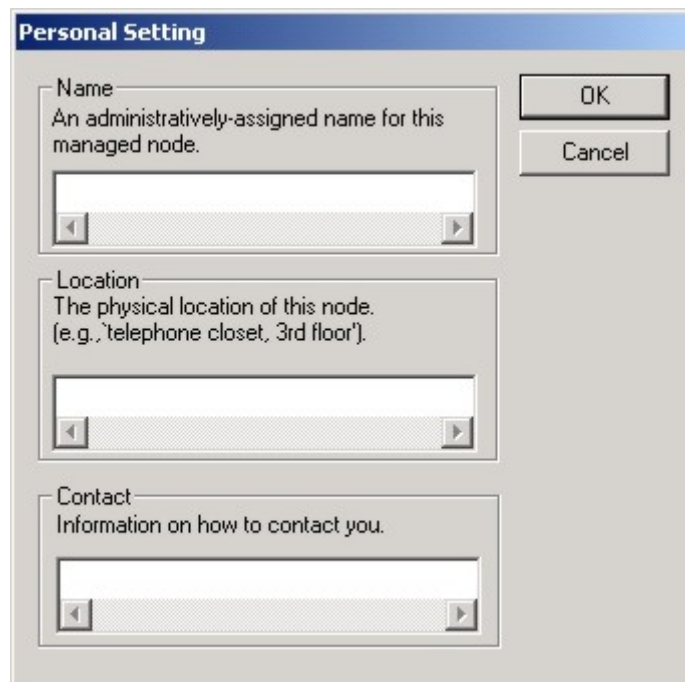
In the Options menu tab, click the **Personal** button to add Name, Location and Contact information; click the **Password** button to set a new password. A password is required before changing the password or when exiting the PC Agent.

To automatically launch the SNMP Agent at Windows start up click the **Auto launch when Windows start up** selection box to place a check there. If this option is not selected, the SNMP Agent can be launched manually.



To manually launch the SNMP Agent program, go to the Start menu, open the Programs folder (if you chose to install it in a different folder open that folder), find the **D-Link PC Agent** folder, open it and double-click the **D-Link PC Agent** icon.

Configure **Name**, **Location** and **Contact** information in the **Personal Setting** menu and click **OK**. Personal Setting information is shared with SNMP capable devices on the network.



To change Personal Setting, enter information as desired in the spaces provided and click **OK** to save the changes.

To change the administrative password, click the **Password** button in the Options menu tab of the D-Link Ethernet Adapter Agent menu. The current password must be entered to view the Password Setting menu. Enter the default password **private** or the current password if it has been changed from the default.

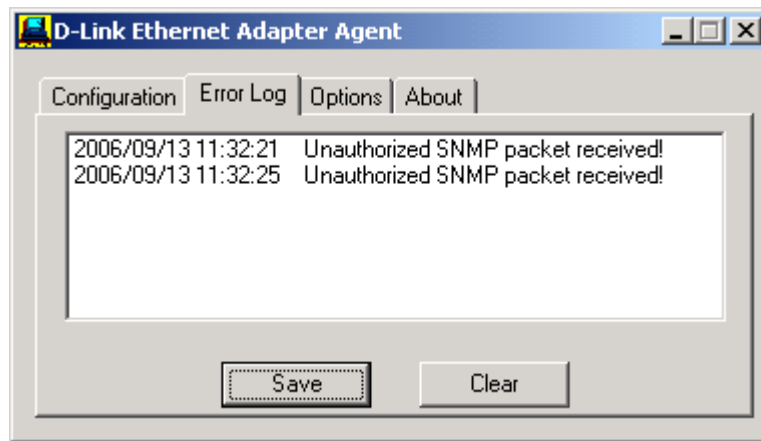


In the **Password Setting** menu, enter the new password to be assigned and type in again to confirm it has been typed correctly. Click the **OK** button to set the new administrative password.



**NOTE:** To exit the PC Agent, it is necessary to enter the administrative password.

The D-Link Ethernet Adapter Agent maintains and allows the user to view an error log for the adapter. To view the error log click on the Error Log tab to select it. The error log is displayed:



To save the error log to the system's hard disk, click the **Save** button and choose a location at the prompt. To delete all log entries click the **Clear** button.