

D-Link®

DSM-510



HIGH-DEFINITION MEDIA PLAYER

User Manual

Table of Contents

Safety Information	4	Adding a Device without an Intel® Viiv™ Technology Verified Router	27
Product Overview	8	Adding a Device.....	30
Package Contents.....	8	Setting Up the Intel® Viiv™ Media Library	31
Minimum System Requirements.....	8	Navigating to the Intel® Viiv™ Technology Settings Screen and Images on Your PC.....	32
Recommended	8	D-Link® Media Server Installation	33
Introduction.....	9	Settings	34
Features.....	10	Options	34
Wireless Installation Considerations	11	On-Screen Keyboard	35
Setup Your DSM-510 Using an Intel® Viiv™ Technology-Based PC	12	Network Settings	36
Wireless Connection.....	15	Wired LAN Settings	36
Wired Connection	16	Wireless LAN Settings	37
Connecting the DSM-510	17	TV Settings	38
Video Connections.....	17	Audio Output Settings.....	38
Audio Connections.....	18	Language Settings.....	39
Network Connections.....	19	Settings for Ease of Use	39
Using the Remote Control	20	Reset Settings	40
Power on the DSM-510.....	21	Wireless LAN Profile Settings.....	40
Finalizing Your Wireless Connection with an Intel® Viiv™ Technology Verified Router	22	Software Update	41
Finalizing Your Wireless Connection without an Intel® Viiv™ Technology Verified Router	24	Device Information.....	41
Finalizing Your Wired Connection	26	Windows® Connect Now	42
		Operating the DSM-510	47

Music	48
Time Search	54
Photo	55
Video.....	58
Time Search	59
Intel® Viiv™ Zone	60
Server.....	61
USB	62
Troubleshooting.....	63
Wireless Basics	69
Networking Basics	74
Check your IP Address	74
Statically Assign an IP Address	75
General Appendix.....	76
How to Check your Media.....	76
Convert an Earlier WMV File into WMV9	77
Remote Control Table	83
Contacting Technical Support.....	84
Warranty	85
Registration.....	90

Safety Information

For optimum performance, please read the following information carefully.

Safety Precautions



The lightning flash with arrowhead symbol, within an equilateral triangle, is intended to alert users to the presence of uninsulated “dangerous voltage” within the product’s enclosure that may be of sufficient magnitude to constitute a risk of electric shock to persons.



The exclamation point within an equilateral triangle is intended to alert the user to the presence of important operating and maintenance (servicing) instructions in the literature accompanying the appliance.

CAUTION!
THE POWER SUPPLY CORD IS USED AS THE MAIN DISCONNECT DEVICE. ENSURE THAT THE SOCKET-OUTLET IS LOCATED/INSTALLED NEAR THE EQUIPMENT AND IS EASILY ACCESSIBLE.

CAUTION!
TO REDUCE THE RISK OF FIRE, ELECTRIC SHOCK, OR PRODUCT DAMAGE, DO NOT EXPOSE THE UNIT TO RAIN, MOISTURE, DRIPPING, OR SPLASHING. DO NOT PLACE OBJECTS FILLED WITH LIQUIDS UPON THE UNIT.

CAUTION!

- **DO NOT INSTALL OR PLACE THIS UNIT IN A BOOKCASE, BUILT-IN CABINET OR IN ANOTHER CONFINED SPACE. ENSURE THE UNIT IS WELL VENTILATED. TO PREVENT RISK OF ELECTRIC SHOCK OR FIRE HAZARD DUE TO OVERHEATING, ENSURE THAT CURTAINS AND ANY OTHER MATERIALS DO NOT OBSTRUCT THE VENTILATION VENTS.**
- **DO NOT OBSTRUCT THE UNIT'S VENTILATION OPENINGS WITH NEWSPAPERS, TABLECLOTHS, CURTAINS, AND SIMILAR ITEMS.**
- **DO NOT PLACE SOURCES OF NAKED FLAMES, SUCH AS LIGHTED CANDLES, ON THE UNIT.**
- **DISPOSE OF BATTERIES IN AN ENVIRONMENTALLY-FRIENDLY MANNER.**

CAUTION!

TO PREVENT ELECTRIC SHOCK, MATCH THE WIDE BLADE OF THE PLUG TO THE WIDE SLOT OF THE ELECTRICAL OUTLET AND FULLY INSERT.

This device is designed and manufactured to assure personal safety. Improper use can result in electric shock or fire hazard. The safeguards incorporated in this unit will protect you if you observe the following procedures for installation, use, and servicing. This device does not contain any user serviceable parts.

- **Carefully read and follow the Manual and Install Guide.**
- **Do not place the product near heat sources such as radiators, heat registers, stoves, or other products that produce heat.**
- **Do not use this product near water.**
- **Unplug the unit from the wall outlet before cleaning. Do not use liquid cleaners or aerosol cleaners. Use a damp cloth for cleaning.**
- **Power-supply cords should be routed so that they are not likely to be walked on or pinched by items placed upon or against them.**
- **Do not overload wall outlets.**
- **Do not use this product during a storm. Unplug the unit from the wall outlet. If the product is to be left unattended for a long period of time. This will prevent damage to the product due to lightning and power-line surges.**
- **Do not attempt to service this product yourself. Opening the cover may expose you to dangerous voltage or other hazards. For service, please contact a qualified service technician.**

Radio and TV Interference:

This equipment has been tested and found to comply with the limits for a Class B digital device, pursuant to Part 15 of the FCC Rules. These limits are designed to provide reasonable protection against harmful interference in a residential installation. This equipment generates, uses and can radiate radio frequency energy and, if not installed and used in accordance with the instructions, may cause harmful interference to radio communications. However, there is no guarantee that interference will not occur in a particular installation. If this equipment does cause harmful interference to radio or television reception, which can be determined by turning the equipment off and on, the user is encouraged to try to correct the interference by one or more of the following measures:

- **Reorient or relocate the receiving antenna.**
- **Increase the separation between the equipment and receiver.**
- **Connect the equipment into an outlet on a circuit different from that to which the receiver is connected.**
- **Consult the dealer or an experienced radio/TV technician for help.**

Any unauthorized changes or modifications to this equipment would void the user's authority to operate this device. This device complies with Part 15 of the FCC Rules. Operation is subject to the following two conditions: (1) This device may not cause harmful interference, and (2) this device must accept any interference received, including interference that may cause undesired operation.

Disclaimers: Certain content and services accessible via the DSM-510 may include materials owned by third parties. The users shall be entirely responsible for ensuring that they have the necessary rights to access and use such third party content. D-Link assumes no liability for and shall not be responsible for a user's access of such content, including but not limited to unlawfully 'ripped' or downloaded content. Further, D-Link does not guarantee the availability of any third party content or services, including that which may be referenced herein, and shall not be responsible for any changes to or the lack of availability of such third party content or services.

This product incorporates copyright protection technology that is protected by U.S. patents and other intellectual property rights. Use of this copyright protection technology must be authorized by Macrovision, and is intended for home and other limited viewing uses only unless otherwise authorized by Macrovision. Reverse engineering or disassembly is prohibited.

Consumers should note that not all high definition television sets are fully compatible with this product and may cause artifacts to be displayed in the picture. In case of 525 progressive scan picture problems, it is recommended that the user switch the connection to the "Standard Definition" output. If there are questions regarding our TV set compatibility with this model please contact our customer service center.

Subscription may be required for services from AOL, TotalVid, Live365™, My Kid's Tunes, or Napster™.

Certain features of this device may be unavailable when accessing stored media content on UPnP AV network attached storage devices.

USB flash drive and USB hard drive sold separately. D-Link is not responsible for damage to USB drives, or loss and/or damage to files on the USB drives, due to improper installation or usage.

This device supports the codec file formats listed herein, however D-Link cannot guarantee full compatibility or proper playback with all such codec files due to modifications and/or other variations that may occur with the end-user's encoded codec files. Certain file formats and/or features are not accessible from USB drives attached to the USB port.

Windows® Media Connect and Windows® Connect Now require Windows® XP SP2, and can be downloaded using Windows update on your computer.

24/7 Technical Support available only in the U.S.A.

1-Year Warranty available only in the U.S.A. and Canada.

Latest Software and Documentation are available at <http://support.dlink.com>.

MPEG-4 contains Advanced Simple Profile only without quarter pixel or global motion compensation.

Maximum wireless signal rate based on IEEE Standard 802.11g specifications. Actual data throughput will vary. Network conditions and environmental factors, including volume of network traffic, building materials and construction, and network overhead lower actual data throughput rate.

Copyright ©2006 D-Link Corporation/D-Link Systems, Inc. All rights reserved. D-Link and the D-Link logo are registered trademarks of D-Link Corporation or its subsidiaries in the United States and other countries. Intel, the Intel logo and Intel Viiv are trademarks or registered trademarks of Intel Corporation or its subsidiaries in the United States and other countries. Other trademarks are the property of their respective owners. The PlaysForSure logo, Windows Media, Windows and the Windows logo are trademarks or registered trademarks of Microsoft Corporation in the United States and/or other countries. HDMI, the HDMI logo and High-Definition Multimedia Interface are trademarks or registered trademarks of HDMI Licensing LLC. Other trademarks are the property of their respective owners. All references to speed are for comparison purposes only. Product specifications, size and shape are subject to change without notice, and actual product appearance may differ from that depicted on the packaging. See inside packaging for warranty details. For an updated list of available online service providers, please visit <http://support.dlink.com>. This product is covered by certain intellectual property rights of Microsoft® Corporation. Use or distribution of such technology outside of this product is prohibited without a license from Microsoft or an authorized Microsoft subsidiary.

Package Contents

- D-Link DSM-510 High-Definition Media Player
- Quick Install Guide
- Manual, QIG, software, and warranty on CD
- 2dBi Wireless Antenna
- Ethernet (CAT5-UTP/Straight-Through) Cable
- Composite RCA Audio/Video Cable
- Remote Control with 2AAA Batteries
- Power Adapter
- Vertical Stand

If any of the above items are missing, please contact your reseller.

Minimum System Requirements

- PC with:
 - Windows® XP/2000
 - 1GHz plus processor
 - Memory Size: 512MB or above
 - 100MB of available hard drive space and a wireless or Ethernet network.
- TV with Composite Video, or HDMI Input.
- Stereo or A/V Receiver with Composite Audio, or Optical Digital.
- If you want to connect the DSM-510 to a Windows® XP-based PC without Intel® Viiv™ technology, use the included CD to install the Nero MediaHome software and refer to this manual.

Recommended

- Windows XP/MCE-based PC with Intel® Viiv™ technology.
- An Intel® Viiv™ technology verified router.
- Broadband Connection for Accessing Online Content.
- Wired or Wireless Network (Wired network is recommended for video streaming).

Introduction

D-Link® introduces the latest addition to its multimedia family of products: the D-Link® DSM-510 High-Definition Media Player. The DSM-510 is a device that plays back video, audio, and photos that are stored on a Media Server.

The DSM-510 integrates home computer systems and home entertainment centers. Digital media content can be accessed directly from a computer, so that movies, music, and photos can be enjoyed from the comfort of your living room. The DSM-510 connects easily to a wired or wireless network, and features 802.11g wireless technology for transfer speeds on a wireless network. These options provide you with the maximum throughput for sharing and transferring digital media.

Simple to setup with a sleek design that makes it a natural addition to any home entertainment center. The AV jacks on the back panel of the DSM-510 allow for direct connection to your television. Use the included remote control to access media content stored on your PC. Browse music files, watch videos, and display photos, all on your television! In addition, the DSM-510 lets you access online media content through Intel® Viiv™ Zone with an existing broadband Internet connection.

The DSM-510 adheres to the universal Plug-&-Play AV specification, allowing it to communicate with other UPnP AV media devices.

The DSM-510 supports the majority of audio, video, and image file formats and streams them directly from your PC. You can stream MP3, WMA, WAV, OGG Vorbis, and AIFF files from your computer and enjoy them on your home stereo system. Watch stored videos in DVR-MS, MPEG1/2/4, AVI, or Xvid format on your television. Enjoy slideshows of your favorite photos in JPEG, TIFF, GIF, BMP or PNG formats. Better yet, it's easy to access the files through the television interface using the remote control included with the DSM-510.

Experience digital media like never before with the DSM-510 High-Definition Media Player. The DSM-510 includes everything you need to instantly access and play music, videos, and photos using your home entertainment center.

Features

- Stream media content from a PC or D-Link Network Attached Storage to your entertainment center.
- Listen to digital music on your stereo system.
- View digital photos, slideshows with music, and high-definition videos on TV.
- Easily connect to your wireless network using 802.11g at up to 54Mbps.
- Connect using an Ethernet network cable at up to 100Mbps.
- UPnP AV compliant for maximum compatibility.
- Support for most popular digital media formats, including Microsoft Windows® recorded TV files (DVR-MS).
- Remote controlled TV interface for quick access to your media content.
- Experience a world of online media content through Intel® Viiv™ Zone.
- Sleek design complements your existing audio/video equipment.
- Optical digital audio output.
- HDMI output.
- 64-bit or 128-bit WEP & WPA security.
- Supports DHCP for easy connection to your home network.
- Color coded one-touch shortcut buttons on the remote, for quick access to music, photos, and videos.

Wireless Installation Considerations

The D-Link High-Definition Media Player lets you access your network using a wireless connection from virtually anywhere within the operating range of your wireless network. Keep in mind, however, that the number, thickness and location of walls, ceilings, or other objects that the wireless signals must pass through, may limit the range. Typical ranges vary depending on the types of materials and background RF (radio frequency) noise in your home or business. The key to maximizing wireless range is to follow these basic guidelines:

1. Keep the number of walls and ceilings between the D-Link adapter and other network devices to a minimum - each wall or ceiling can reduce your adapter's range from 3-90 feet (1-30 meters.) Position your devices so that the number of walls or ceilings is minimized.
2. Be aware of the direct line between network devices. A wall that is 1.5 feet thick (.5 meters), at a 45-degree angle appears to be almost 3 feet (1 meter) thick. At a 2-degree angle it looks over 42 feet (14 meters) thick! Position devices so that the signal will travel straight through a wall or ceiling (instead of at an angle) for better reception.
3. Building Materials make a difference. A solid metal door or aluminum studs may have a negative effect on range. Try to position access points, wireless routers, and computers so that the signal passes through drywall or open doorways. Materials and objects such as glass, steel, metal, walls with insulation, water (fish tanks), mirrors, file cabinets, brick, and concrete will degrade your wireless signal.
4. Keep your product away (at least 3-6 feet or 1-2 meters) from electrical devices or appliances that generate RF noise.
5. If you are using 2.4GHz cordless phones or X-10 (wireless products such as ceiling fans, lights, and home security systems), your wireless connection may degrade dramatically or drop completely. Make sure your 2.4GHz phone base is as far away from your wireless devices as possible. The base transmits a signal even if the phone is not in use.

Note: For best video quality, a wired connection is recommended.

Setup Your DSM-510 Using an Intel® Viiv™ Technology-Based PC

To use this setup guide, you must have an Intel® Viiv™ technology-based PC featuring the Intel® Viiv™ logo below. If you do not have an Intel® Viiv™ technology-based PC at this time, please see the **D-Link Media Server Installation** section on page 32.

Your device has been designed to work with Intel® Viiv™ technology-based PCs, which helps you add this device to your network and enjoy content from your PC. To enjoy these features, you may need to update the Intel® Viiv™ software on your PC.

Intel® Viiv™ technology-based PCs have this logo on them.



Insert the CD that came with your DSM-510 into your Intel® Viiv™ technology-based PC, and follow the on-screen instructions to guide you through the update process.

IMPORTANT:

- This software will enable the instant on/off power management features of your computer, which allows your new device to “wake-up” your PC to access content and services marked “Enjoy with Intel® Viiv™ technology”.
- You may need to restart your PC to begin using the Intel® Viiv™ software.

Turn on the computer and insert the D-Link DSM-510 Driver CD into the CD-ROM drive.

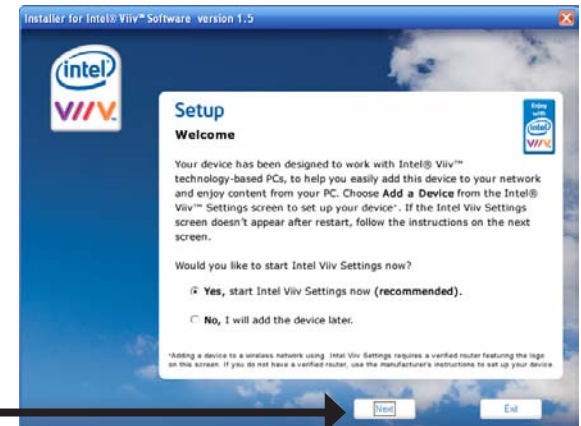
Click **Install Media Server**

If the CD Autorun function does not automatically start on your computer, click Windows® Start > Run. In the Run command box type “D:\DSM510.exe”, where D: represents the drive letter of your CD-ROM.



At the Intel® Viiv™ setup screen, select the option **Yes, start Intel Viiv Settings now (recommended)**.

Click **Next**



Click **Next**



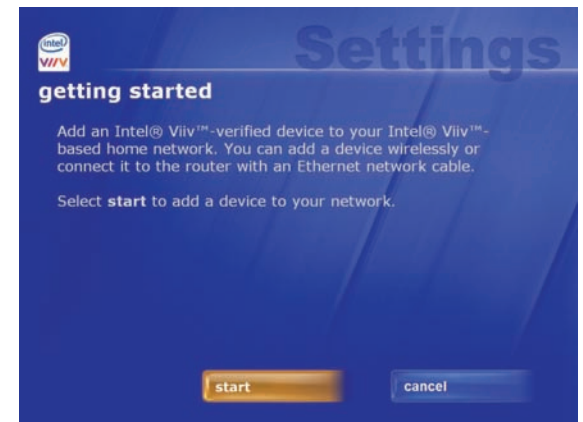
After the installation, the following screens will appear.

Click **add a device**



Note: Intel® ViiV™ technology continuously scans the network for new devices. If a new device is found, a pop-up alert is displayed on the desktop.

Click **start**

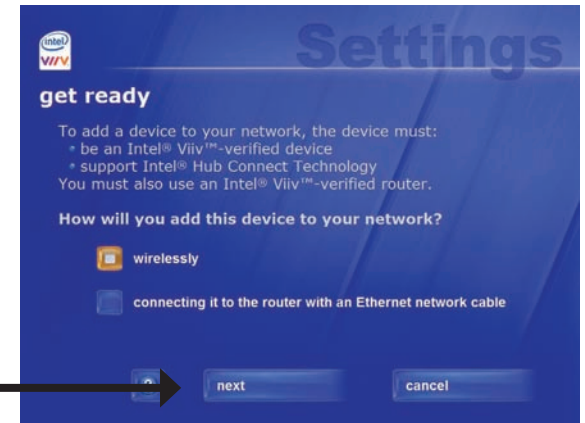


Wireless Connection

Select the option **wirelessly**.

If you select **connecting it to the router with an Ethernet network cable**, please skip to “Wired Connection” on page 16.

Click **next**

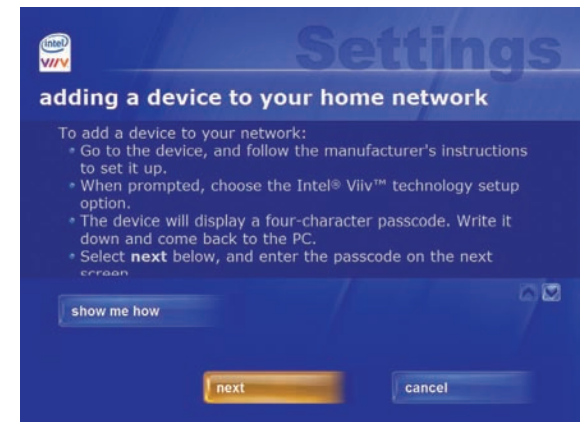


If the Intel® Viiv™ software does not find an Intel® Viiv™ technology verified router, then connect your DSM-510 (see page 17). Power on your DSM-510 (see page 21) and follow the instructions that apply to finalizing your wireless connection without an Intel® Viiv™ technology verified router.

Intel® Viiv™ technology verified routers have this logo on them.



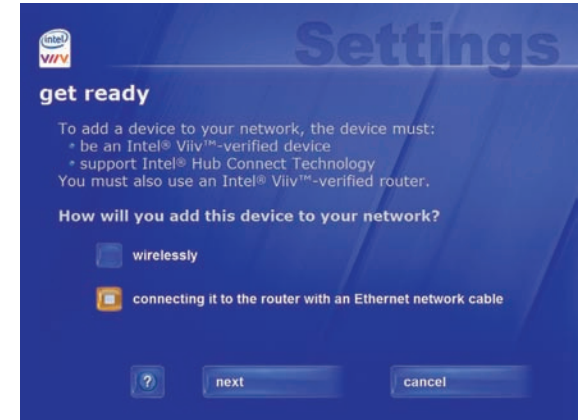
If an Intel® Viiv™ technology verified router is detected, you should see the **adding a device to your home network** screen. Proceed to page 17 to connect your DSM-510 and power it up for the first time.



Connect your DSM-510, please continue to page 17.

Wired Connection

For a wired connection, select the option **connecting it to the router with an Ethernet network cable**.



Click **next**

At the **adding a device to your home network** screen, leave your PC and connect your DSM-510 (see page 17).



Connect your DSM-510, please continue to page 17.

Connecting the DSM-510

All audio, video, and networking connections are located on the rear panel of the DSM-510.

Video Connections

Select one of two ways to connect video to your DSM-510:

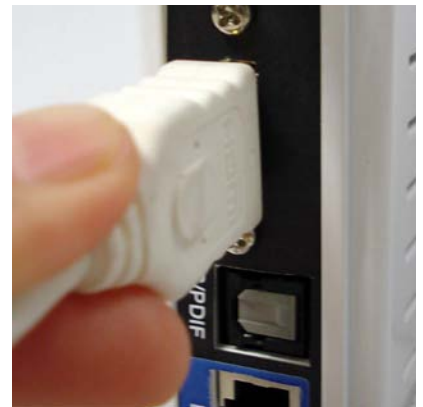
Composite Audio/Video Connector

- Plug the supplied 3.5mm mini-jack connector into the DSM-510. Plug the opposite end (the yellow video cable and the red and white audio cables) into your television input.



HDMI

- Plug the HDMI cable into the HDMI connector on the back panel of the DSM-510. Plug the opposite end to the matching HDMI connector on your television or audio/video system.



Note: This cable is not supplied.

By default the DSM-510 will automatically detect and switch between Digital (HDMI) and Analog (Composite) modes.

High-Definition Multimedia Interface (HDMI) supports standard, enhanced, or high-definition video, plus multi-channel digital audio on a single cable.

Audio Connections

Select one of two ways to connect audio to your DSM-510:

Composite Audio/Video Connector

- Plug the supplied 3.5mm mini-jack connector into the DSM-510. Plug the opposite end (the yellow video cable and the red and white audio cables) into your television/receiver input.



Optical Digital Audio

- Connect an optical audio connector into the S/PDIF connector on the DSM-510 and the matching opposite end of the cable to the audio input of your audio system.

Note: This cable is not supplied.



Network Connections

Select one of two ways to connect your DSM-510 to your network:

RJ-45 Ethernet Connector

- Connect the supplied Ethernet cable to the network cable connector, and attach the other end to a router or hub on your network.



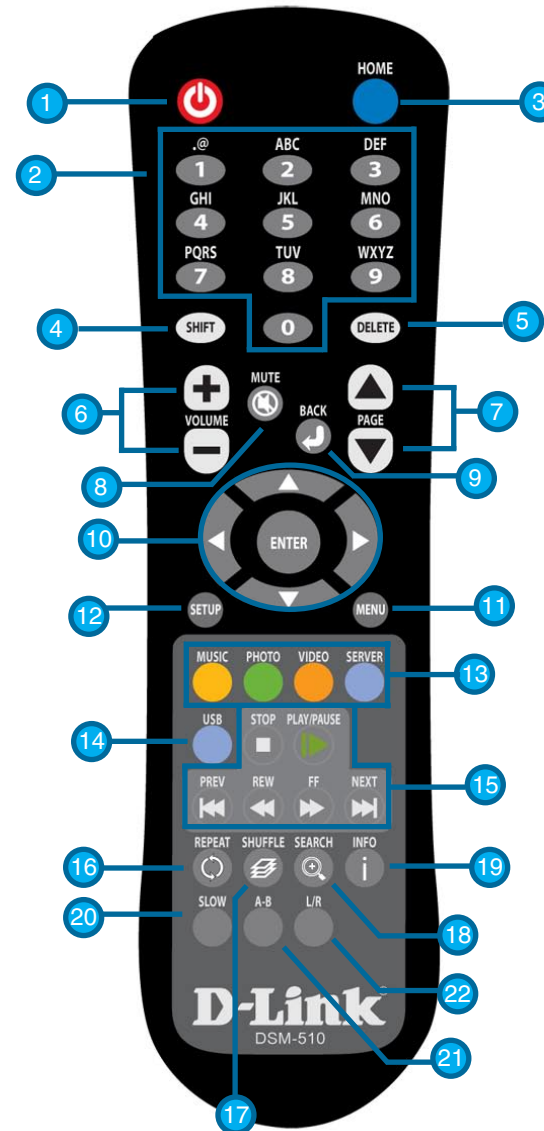
Wireless Antenna

- Attach the supplied antenna by threading it onto the antenna connector. Be sure the antenna is secure and in an upright position.



Using the Remote Control

1. Power
2. Alphanumeric Keys
3. HOME
4. SHIFT
5. DELETE
6. VOLUME + & -
7. PAGE UP & DOWN
8. MUTE
9. BACK
10. Enter & Navigation Buttons
11. MENU
12. SETUP
13. Color-Coded Shortcut Keys
14. USB
15. Stop, Play/Pause, REV, FF, PREV, and NEXT
16. REPEAT
17. SHUFFLE
18. SEARCH
19. INFO
20. SLOW
21. A-B
22. L/R



Note: Please see the Remote Control Table in the Appendix on page 83 for more information on the functionality of the DSM-510 remote control..

Power on the DSM-510

Plug in the DSM-510's power cable into the back panel connector, the unit should power on immediately.

Note: *If you are using the composite or HDMI video connection, the DSM-510 will automatically detect the correct video signal.*



If you are connecting the DSM-510 wirelessly and have an Intel® Viiv™ technology verified router, please continue to page 22.

If you are connecting the DSM-510 wirelessly and do not have an Intel® Viiv™ technology verified router, please continue to page 24.

If you are connecting through a wired Ethernet cable, please continue to page 26.

Finalizing Your Wireless Connection with an Intel® Viiiv™ Technology Verified Router

Click **Yes**, if you have an Intel® Viiiv™ technology verified router. Adding a device to a wireless network using the Intel® Viiiv™ Settings requires an Intel® Viiiv™ technology verified router featuring the logo on page 15. If you do not have a verified router, please see the **D-Link Media Server Installation** section in this manual.

Click **OK**



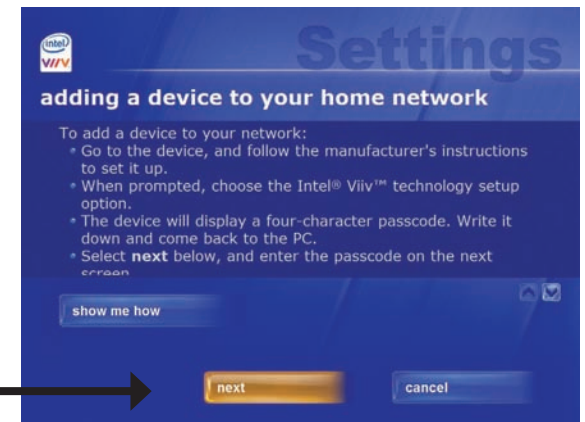
Note: Skip to page 24, if you do not have an Intel® Viiiv™ technology verified router.

After clicking **OK**, the next screen will provide you with a temporary four-character passcode. Please memorize or write down this passcode.



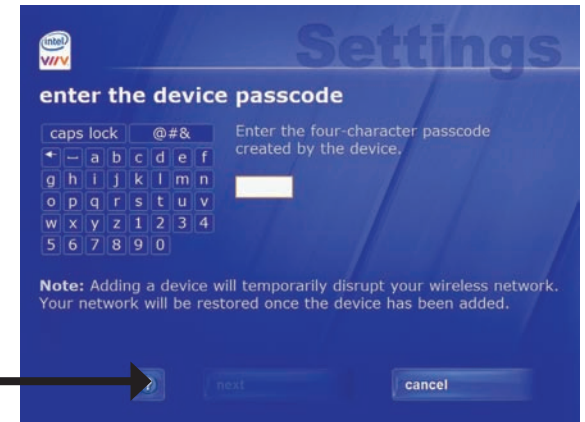
Return to your PC and follow the on-screen instructions to complete the addition of your device to the network.

Click **next**



Enter the passcode before the 10-minute timer expires.

Click **next**



Note: If the timer expires before you enter the temporary passcode, you can obtain a new passcode by starting the timer again from the DSM-510.

After the device has been added to the network, return to your DSM-510.

Click **OK**



After you have clicked **OK**, a home page will appear. Please return to your PC to complete the addition of your device.

Please Continue to page 30!

Finalizing Your Wireless Connection without an Intel® Viiv™ Technology Verified Router

Click **CANCEL**, if you do not have an Intel® Viiv™ technology verified router.

Click **CANCEL**



At the next screen, select **Scan for wireless LANs** and click **OK**.



Using your remote control, select a wireless network from the list and press **ENTER**.



Select the Encryption Type and the Cryptography Key to configure your wireless settings. Once you've completed all of your settings, please click **OK**.

Click **OK**



If you need to manually configure the IP Settings, click the **IP Address Settings** button. You will see a new screen appear.

Click **OK**



To manually enter the IP address information, select **NO** from Get IP Address and press the **ENTER** button on your remote control. The navigation arrows on your remote control will allow you to select the corresponding field that needs to be updated. Press the **ENTER** button on your remote control to select the field and use the number keys to input the information. Press **ENTER** when you have completed entering the information. Click **OK** after you've finished updating the IP Address Settings screen.

Please return to your PC to complete the addition of your device.

Please Continue to page 27!

Finalizing Your Wired Connection

If you connected to your network using a wired Ethernet cable, you will see this screen.

Click **Finish**



After you have clicked **OK**, a home page will appear. Please return to your PC to complete the addition of your device.

Click **next**



Please Continue to page 30!

Adding a Device without an Intel® Viiv™ Technology Verified Router

Click **view network map**



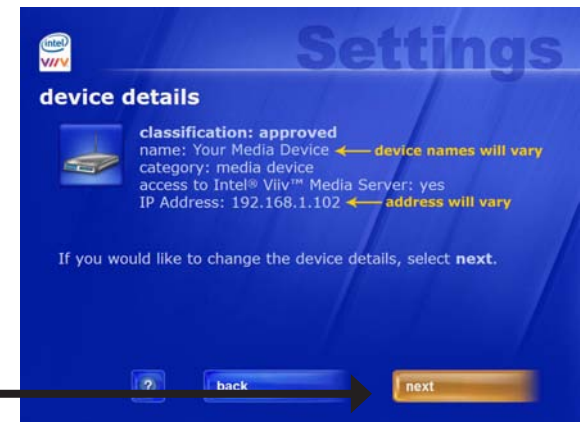
Note: Your device may have a “?” on it, this means that it is not approved yet.

Click your media device



After clicking on the device, the next screen will provide details about this device.

Click **next**



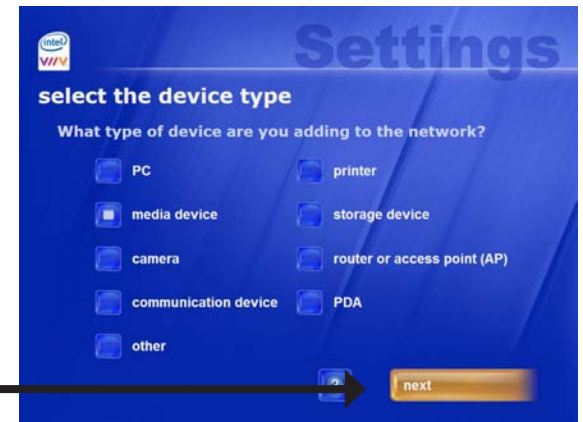
Select **approved** if you want the media device to allow access to the network.

Click **next**



The media device should be automatically selected.

Click **next**



When you see this screen, click **yes** to grant access for your media device.

Click **next**



After you granted access to the media device you should be returned to the **network map** menu. Notice that the “?” no longer appears on your media device.

Click **back**



After you've clicked the **back** button you will be returned to the main menu. Click the **update media library** button to set up your Intel® Viiv™ Media Library.

Click **update media library**



Please Continue to page 31!

Adding a Device

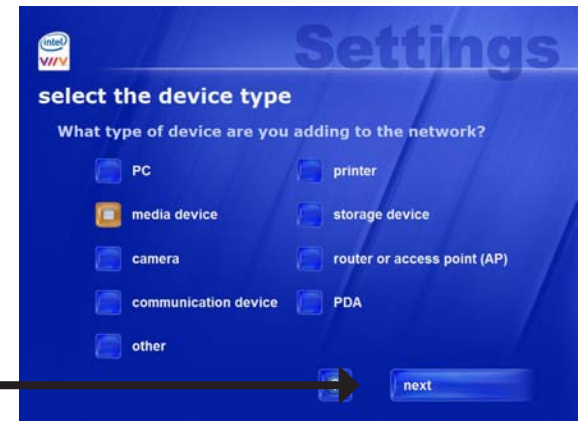
Your PC will begin adding the device. Please wait...this may take up to five minutes. When it has been added, you will see this screen, listing the device name and type.

Click **next**



The media device should be automatically selected.

Click **next**



When you see this screen, you have successfully added your device to the network.

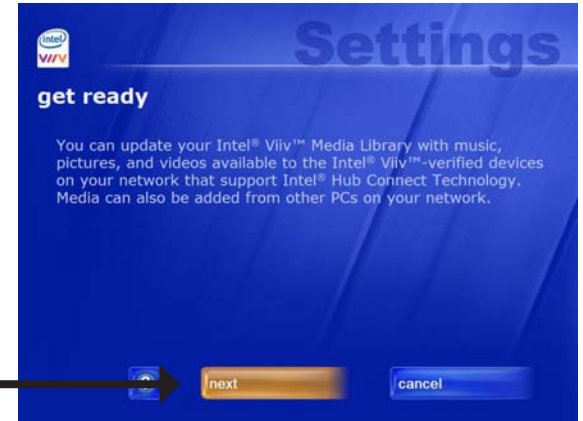
Click **next**



Setting Up the Intel® Viiv™ Media Library

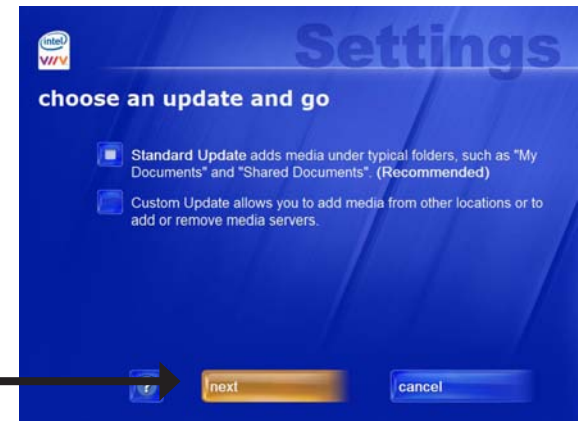
In order to access the media content on your PC, you must setup your Intel® Viiv™ Media Library.

Click **next**



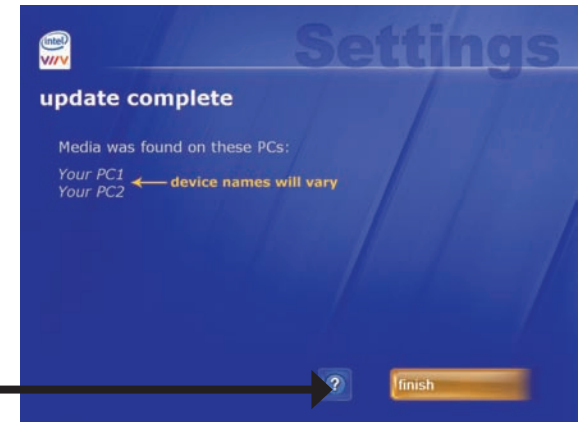
It is recommended to select **Standard Update**.

Click **next**



When you see this screen, you have successfully completed the setup of your Intel® Viiv™ Media Library.

Click **finish**



Return to your DSM-510 unit and you should see the following menu. Use your remote control to navigate through the menu.



Navigating to the Intel® Viiv™ Technology Settings Screen and Images on Your PC

You may navigate to the Intel® Viiv™ settings window either by selecting the Intel® Viiv™ logo on your desktop or system tray. The logo can also be found in the **More Programs** area in Windows® XP Media Center Edition 2005.

You are now ready to use your DSM-510!

D-Link® Media Server Installation

Note: Do not install the Media Server software if you have an Intel® Viiv™ technology verified PC, because you can use the Intel® Viiv™ Media Server that is included with your Intel® Viiv™ technology verified PC.

To share audio, video, and photo files from your computer, it is necessary to install the Nero MediaHome software on any PC that is not Intel® Viiv™ technology verified. The Nero MediaHome software allows you to point to the folders on your PC's hard drive that contain the audio, video, and photo files you want to share. The Nero MediaHome software then streams the content to your DSM-510 via your wired/wireless network connection.

Currently the DSM-510 only connects to one Media Server at a time. If more than one PC contains files you want to share, you can select one of the following options:

1. Copy all of the files to one computer designated to run the Nero MediaHome software.
2. Map network drives from the computer with the Nero MediaHome software to additional computers that contain files you want to share. This method also allows you to share files from computers that cannot run the Nero MediaHome software such as Macintosh systems. The computer running the Nero MediaHome software must always be on when streaming content from any computer.
3. Install the Nero MediaHome software on each computer. You can only connect to one server at a time. To connect to another server, you must press the Media Server key on the remote control, or go to the home screen and select Server.
4. Power on your DSM-510, and do the following based on your network connection:
 - **Wireless:** Select the option **Cancel**. Connect to your network by selecting a network name and by providing the necessary information for authentication. Please refer to page 24 for step-by-step instructions.
 - **Wired:** After powering on your DSM-510 your network will automatically be detected. Click **Finish**.

Settings

Press the **Setup** button on your remote control to configure your DSM-510.

Options

Network Settings: This option allows you to modify your wireless and wired settings. You can also access your WCN® setup wizard from this screen.

TV Settings: This option allows you to change your video output type between Digital (HDMI) and Analog (Composite), as well as the resolution size.

Audio Output Settings: Select the audio output type for different audio formats.

Language Settings: This option allows you to choose the language that the interface is displayed in.

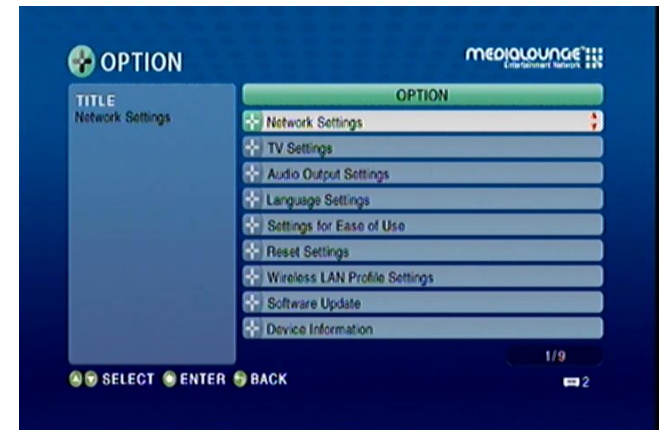
Settings for Ease of Use: Here you can configure settings for your device's startup, which will allow easier access to your media.

Reset Settings: This will restart your device to factory settings.

Wireless LAN Profile Settings: Here you can view previously accessed wireless connections as well as choose between which one to connect to.

Software Update: This option allows you to update the DSM-510.

Device Information: This option displays information concerning the DSM-510.



On-Screen Keyboard

In order to input information, you must use the DSM-510 keyboard interface. When information is needed within an input box, click the **MENU** key on your remote control and select the Keyboard Input option.

Use the **selection arrows** and the **ENTER** button to select from Numbers, Lower (lower case alphabet), Upper (upper case alphabet), or Symbol. The **SHIFT** key on your remote control can also toggle between these options if pressed repeatedly. Once you've selected your character type, use the **selection arrows** on your remote control to select the characters you want to input. When you have finished, select **OK**.



Network Settings

Wired LAN Settings: If you want to connect through an Ethernet cable, then select this option.

Wireless LAN Settings: Select this option if you are using the antenna to connect wirelessly to a server.



Wired LAN Settings

Get IP Address: Clicking this button will retrieve the IP address automatically.

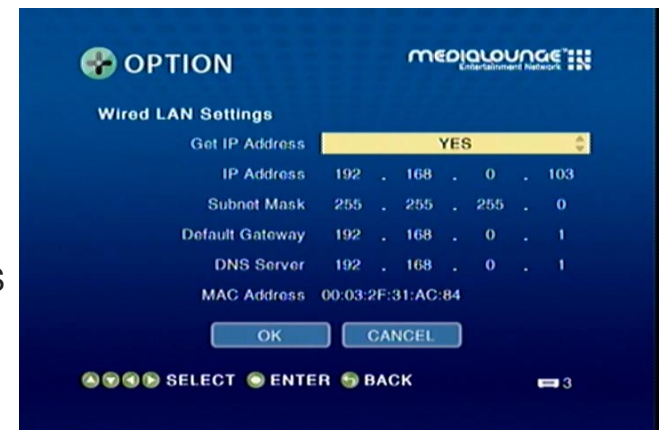
IP Address: Input the IP Address.

Subnet Mask: Input the Subnet Mask.

Default Gateway: Input the Default gateway.

DNS Server: In case a DNS server exists in the network, input the IP Address of the DNS server.

MAC Address: Input the MAC Address.



Wireless LAN Settings

Scan for wireless LANs: Click this button to search for wireless LANs, and select your Access Point.

Manual Configuration: Click this button to manually connect to the network (see the following screen).

Windows Connect Now: Click this option if you want to use Windows Connect Now® to configure your device's wireless connection. If you want to configure your device's wireless connection, please continue to page 42.



Manual Configuration

MODE: Choose between **Ad-Hoc** or **Infrastructure**.

Ad-Hoc should be selected when the DSM-510 is directly connected to other wireless network devices without an access point.

Infrastructure should be selected when the DSM-510 is connected to the wireless LAN where an access point device exists.

Wireless LAN Type: Select between either 802.11b/g or 802.11a.

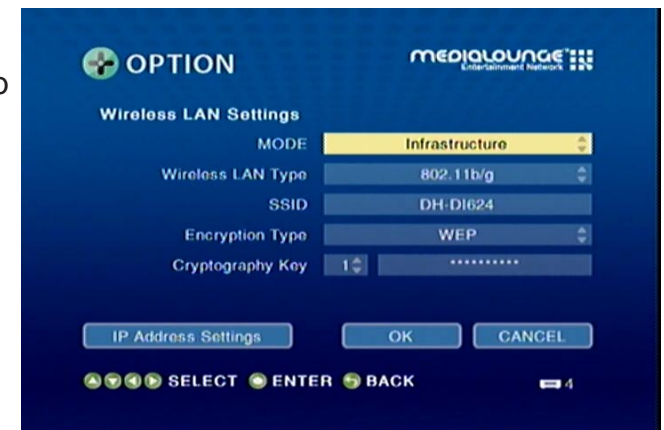
SSID: Using the software keyboard input the SSID, which should be used by the existing wireless network.

Encryption Type: Select between None, WEP, or WPA.

Cryptography Key: When WEP or WPA is selected in Encryption Type, two boxes will appear (the **Index Selection** box and the **Cryptography Key** input box).

Index Selection box allows you to select an Index number from 1 to 4. Each index number saves a Cryptography Key.

Cryptography Key allows you to enter the WEP or WPA key used in the existing wireless network.



TV Settings

Output Type: Select between Digital (HDMI) and Analog (Composite).

Screen Size: Select between 4:3 or 16:9.

Resolution: If the output type is set to Digital (HDMI), select between Auto, 480i, 480p, 1080i, and 720p. If the output type you selected is Analog (Composite), select between 480i, 480p, 1080i, and 720p.



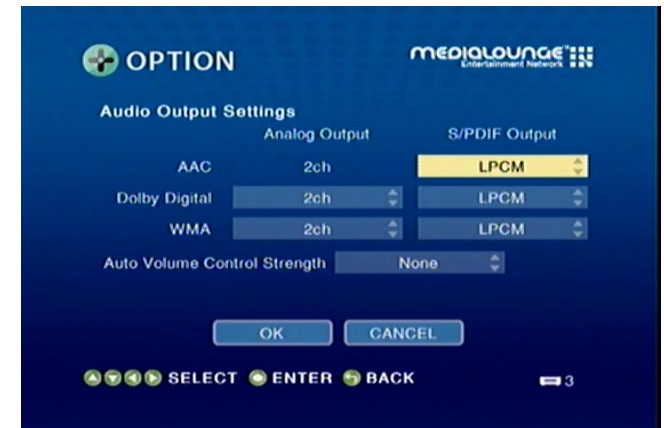
Audio Output Settings

AAC: You can choose to output audio in LPCM or have it turned off to the digital output.

Dolby Digital: You can choose to output audio in 2 channel or 5.1 for analog. You can also change the digital output from LPCM to Dolby Digital or off.

WMA: You can choose to output audio in 2 channel or 5.1 for analog. You can also change the digital output from LPCM to off.

Auto Volume Control Strength: There are three variable settings to select from: Small, Moderate, and Strong. These control the audio output depending on the strength of the media file.



Language Settings

Select the available language that best fits your interface.

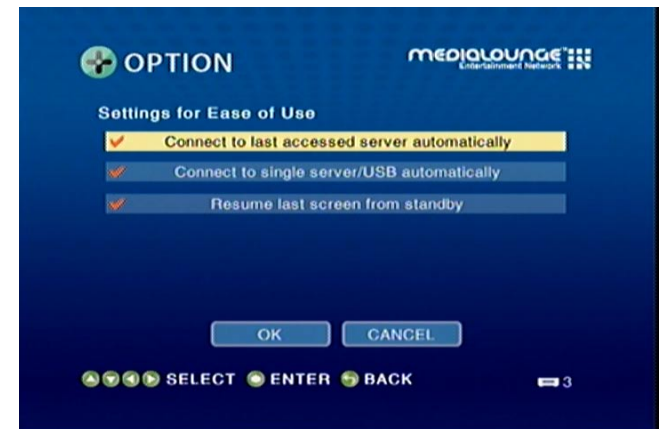


Settings for Ease of Use

Connect to last accessed server automatically: On startup your DSM-510 will try to access the last media source it was connected to.

Connect to single server/USB automatically: If only one media source or USB is detected the media server will connect to it automatically.

Resume last screen from standby: After turning on the unit, the last screen accessed will be displayed.



Reset Settings

You can reset the DSM-510's settings through this screen.



Wireless LAN Profile Settings

To exchange connection priorities, click the **MENU** button on your remote control.

Set to Exchange: Pick the wireless access point that you want to exchange connection priorities.

Exchange: This option will initialize the move between wireless access points.

Remove: This will remove the wireless access point profile from the list.

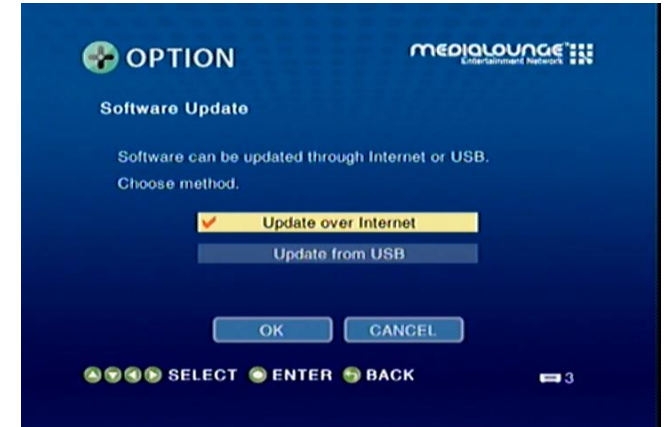
Note: In order for the exchange to take effect, you must power cycle the DSM-510 (meaning you must turn off the DSM-510 and turn it back on again).



Software Update

Update over Internet: Select this option to update the DSM-510 through an Internet connection.

Update from USB: Select this option to update the DSM-510 through a USB device.



Device Information

This screen will display information about the DSM-510.

Device Name: Displays the name of the device.

Version: This will show the current version of the software that the device is using.

MAC Address: Shows the Wired and Wireless MAC address of the DSM-510.

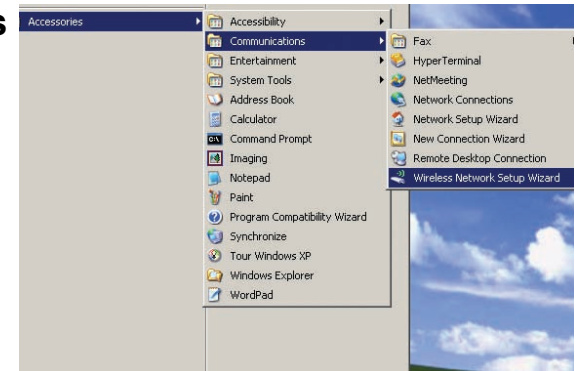


Windows® Connect Now

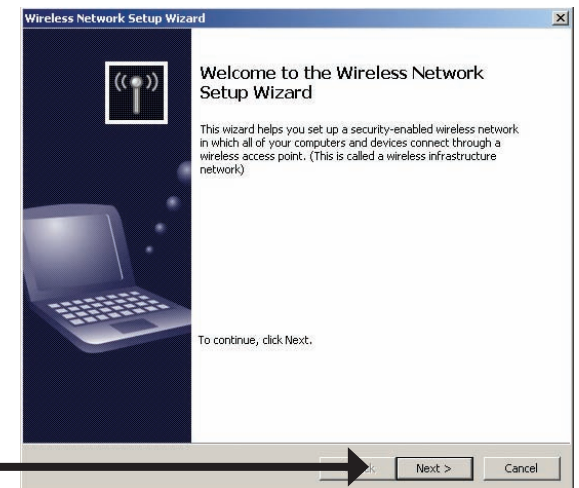
If you already have wireless settings configured on your PC, instead of using the Intel® Viiv™ setup , you can use Windows® Connect Now (WCN) to configure the wireless settings on your DSM-510.

Note: WCN is only available on PCs running Windows® XP with Service Pack 2 installed.

Go to **Start > All Programs > Accessories > Communications** and click **Wireless Network Setup Wizard**.



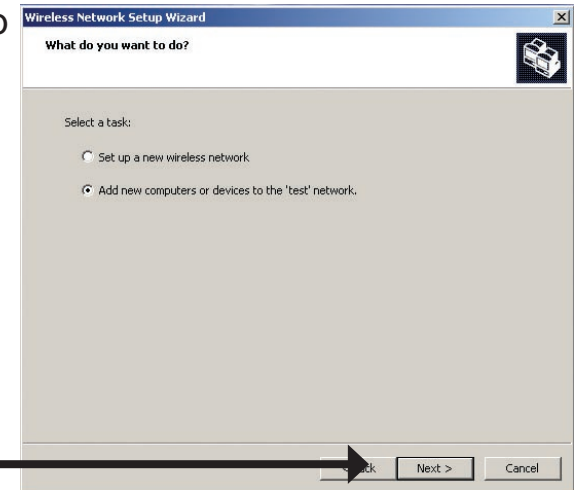
Your system will display the Setup Wizard Welcome screen. Click **Next** to continue.



Click **Next**

Select to add a new device to your existing wireless network and click **Next** to continue.

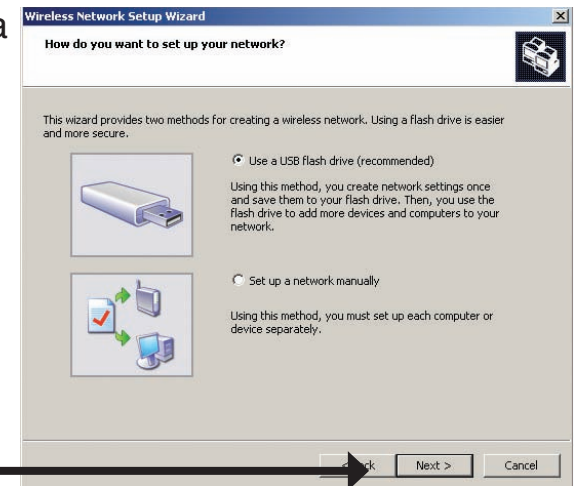
Click **Next**



The wizard provides two methods for setting up a wireless network. Select to use a USB flash drive to save your wireless network settings and click **Next** to continue.

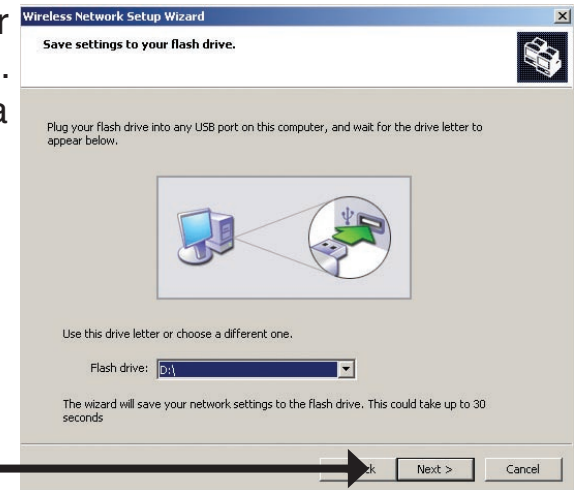
Note: Using a USB flash drive is recommended.

Click **Next**



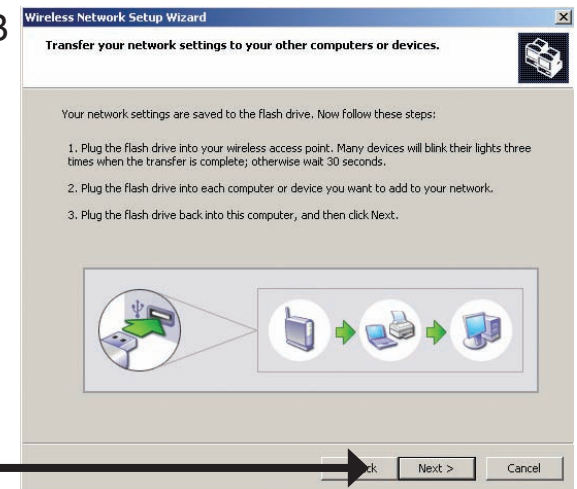
Plug your flash drive into a USB port on this computer. The drive letter will appear in the pull down menu. You can choose to use this drive or select another drive. Click **Next** to save your wireless settings to the USB flash drive. This may take a few seconds.

Click **Next**



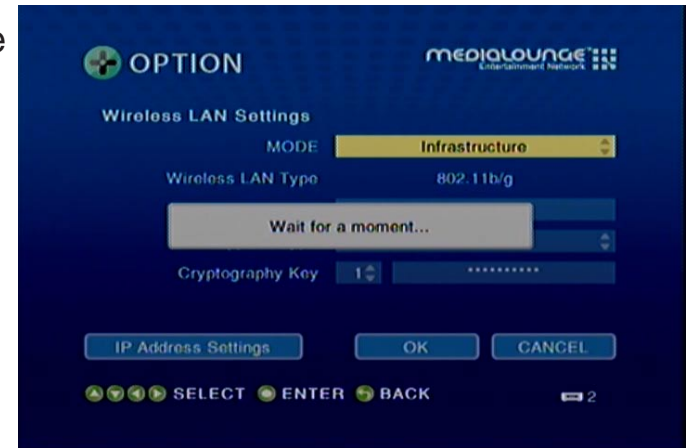
This screen will appear when the wireless settings have been saved to the USB flash drive.

Click **Next**



Next, remove the USB Flash Drive from your PC and insert into the USB port on the back panel of the DSM-510.

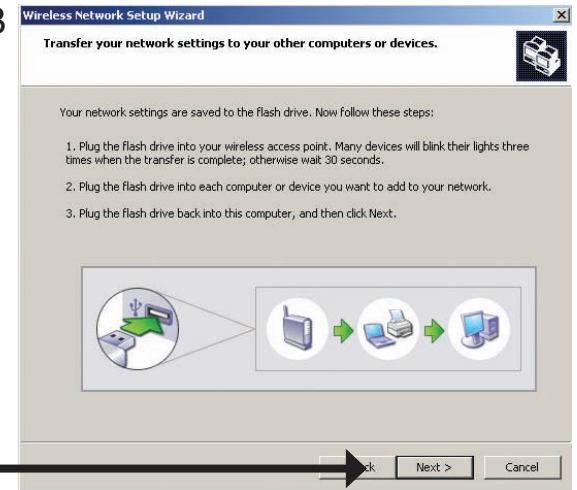
The following screen will appear, prompting you to wait for the detection to take place.



The following screen confirms that your wireless settings have been applied. Click **OK**.

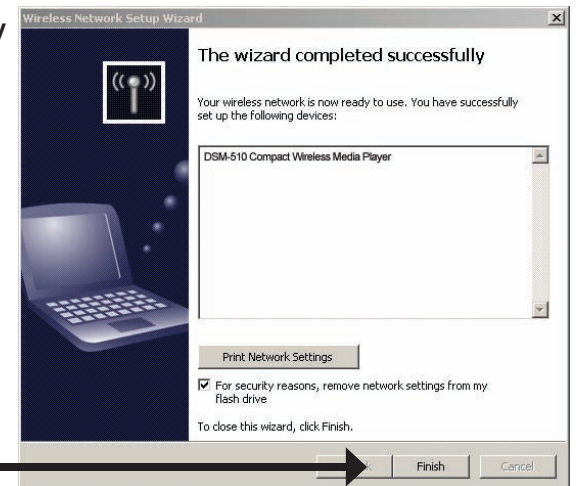


Next, remove the USB Flash Drive from the DSM-510 and insert it back into the USB port on your PC. Click **Next** to continue.



Click **Next**

Wireless configuration using WCN is now complete. The setup wizard will display the devices that have been setup with your wireless network. Click **Finish**.



Click **Finish**

Windows® Connect Now has been configured!

Operating the DSM-510

VIDEO: Click **Enter** on your remote control to show the Video Contents selection screen.

MUSIC: Click **Enter** on your remote control to show the Music Contents selection screen.

PHOTO: Click **Enter** on your remote control to show the Photo Contents selection screen.

SERVER: Click **Enter** on your remote control to show the Server selection screen.

USB: Click **Enter** on your remote control to show the Connected USB Device List.

OPTION: Click **Enter** on your remote control to show the Options screen.



Note: To directly access this screen, press the **Server** button on the remote control.

Note: If the Intel® Viiv™ technology verified PC is powered down, selecting the Intel® Viiv™ Media Server will power it back up to provide access to music, photo, video, and the Intel® Viiv™ Zone.

Menu Basics

The DSM-510 uses an on-screen menu interface. As you move through the menus, you will use the **selection arrows** on the remote control to move up, down, right and left. The highlight bar moves from item to item as you press the selection arrows. You will need to press **ENTER** on the remote control to access the item. The **Page Up** and **Page Down** buttons can be used to navigate through the track list one page at a time. Once you are in a particular category, you can press the **MENU** button on your remote control to access the pulldown menu within that category.

Music

Music Quality

Your music listening experience on the media player depends upon the quality of your digital music files on your PC. Avoid quality settings below 48kbps as they create low quality audio. For CD quality music, rip your MP3s at 128kbps or higher, with a sample rate of 44.1kHz.

Supported Music Formats

The following music file formats are supported:

- **MP3** (up to 320 kbps)

MPEG-1, Layer 3 Audio file -The standard Internet music file format. This is the most commonly used audio format.

- **WMA** (Does not support WMA lossless, WMA Pro)
Windows Media Audio file - Supported by the Microsoft Windows Media player and some music jukebox programs. Also supports WMDRM protected WMA files downloaded from online services.

- **WAV**

WAV was developed by Microsoft and IBM. WAV sound files end in .wav and are compatible with Windows applications supporting audio.

- **AIFF** (AIFF files must be encoded in PCM format only.)

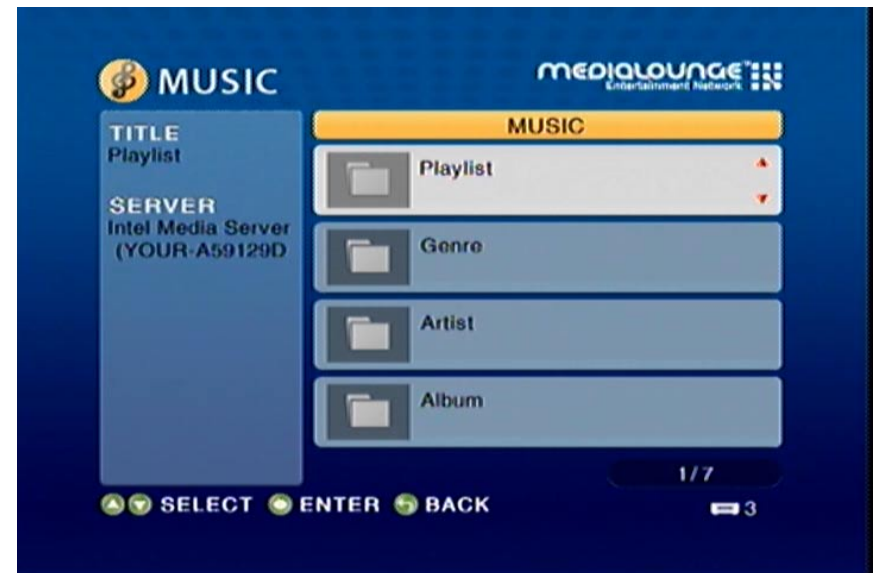
AIFF (Audio Interchange File Format) was developed by Apple Computers and is the standard audio format for Macintosh computers. File extensions are .AIF or .IEF.

- **MPEG 1 and MPEG 2**

Moving Pictures Experts Group created standards for compressing audio and video. Audio uses the file extension .mp3.

- **OGG Vorbis**

Open source audio format. Uses the file extension .ogg.



Accessing Music

Select the **MUSIC** category from the HOME page or click the **MUSIC** button on the remote control. Select a category, by using the **down arrow** and **up arrow** on the remote control to navigate (choose from Playlist, Genre, Artist, Album, All Music, Folders, or Favorites). Select your option by clicking **ENTER**. If you want to play all of the tracks within the category you selected, simply press the **Play** button. If you want to play just one track, use the **up arrow** and **down arrow** buttons to navigate one track at a time. After the appropriate track is highlighted, press **ENTER** on the remote control. The **Page Up** and **Page Down** buttons can be used to navigate through the track list one page at a time.

Playing a Track

Once you enter the music menu, there are several ways that you can view tracks. You can view Playlist, Genre, Artist, Album, All Music, Folders, or Favorites.

If you select to view All Music (see the following menu), then use the **selection arrows** to navigate to the track you wish to play. Once you have located the appropriate track, highlight it and press **ENTER** or **Play** on the remote control. The track will begin playing on your stereo or television speakers.

To play all of the tracks visible in this category, simply press **Play**.



Playing a Group of Songs

Select a music folder and press the **Play** button on the remote control, all of the songs within the selected folder will be played. You can highlight a genre of music and all files that are associated with that genre will be displayed. Genre categories are defined when an audio file is created.

You can play songs within a folder from a specified track forward. For instance, if you have a folder with ten tracks and select Track 3, clicking on the **Play** button will play tracks 3 through 10.

Creating Music Playlists using 3rd Party Software

Use your favorite music software on your PC to create music playlists. A playlist allows you to specify exactly what tracks to play and in what order to play them. For example, create a “favorites” playlist and just listen to your favorite tracks. The DSM-510 will play tracks from playlists you create on your computer. The media player supports playlists in three standard formats:

- **m3u** Playlist File
- **pls** Playlist File
- **wpl** Playlist File

Software for playing music on your PC can be used to create playlists. **WinAmp™** and Microsoft Windows® Media Player™ are two examples.