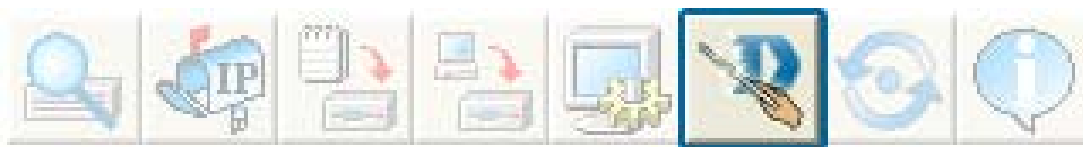


Setup Wizard (continued)



Enter the **SSID** and the **Channel** for the IEEE network.



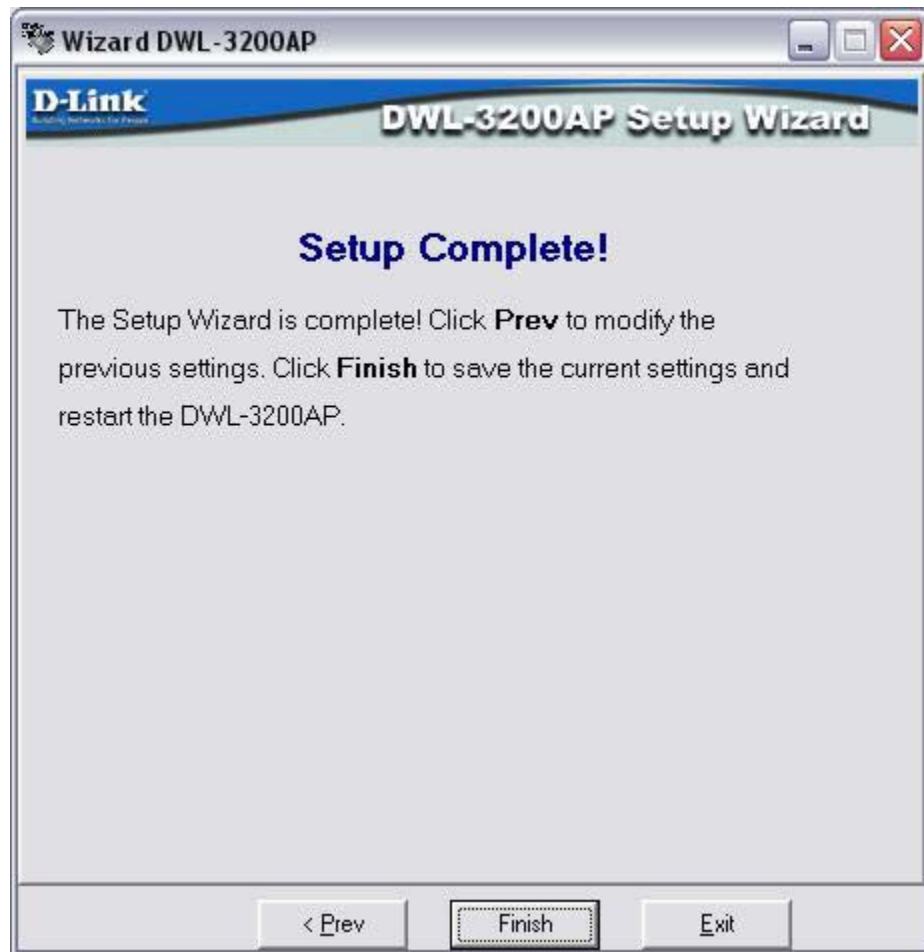
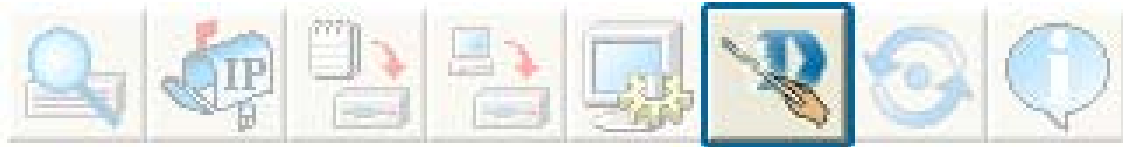
Click **Next**.

If you want to enable Encryption, enter the Encryption values here.



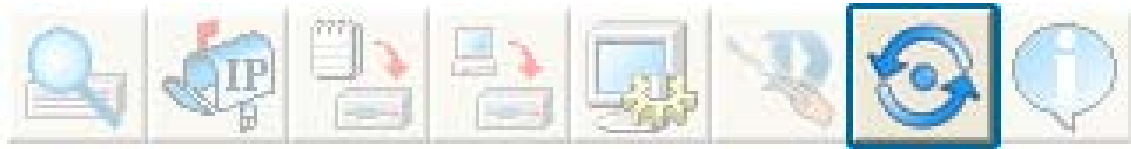
Click **Next**.

Setup Wizard (continued)



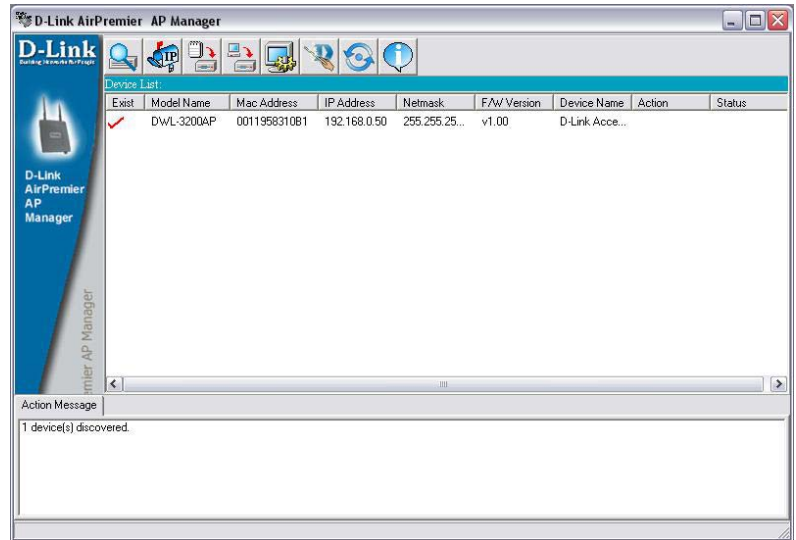
The DWL-3200AP setup is complete!

Refresh

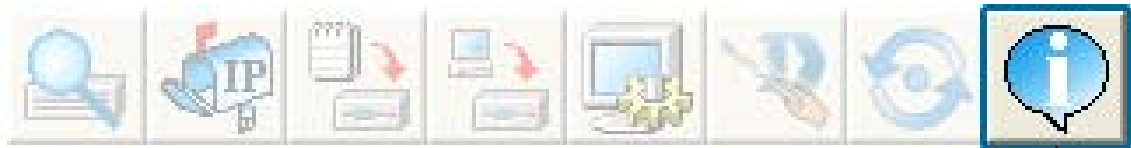


Click on this button to **refresh the list of devices** available on the network.

Devices with a checkmark next to them are still available on the network. Devices with an X are no longer available on the network.



About



Click on this button to view the version of AP Manager.



Networking Basics

Using the Network Setup Wizard in Windows XP

In this section you will learn how to establish a network at home or work, using **Microsoft Windows XP**.

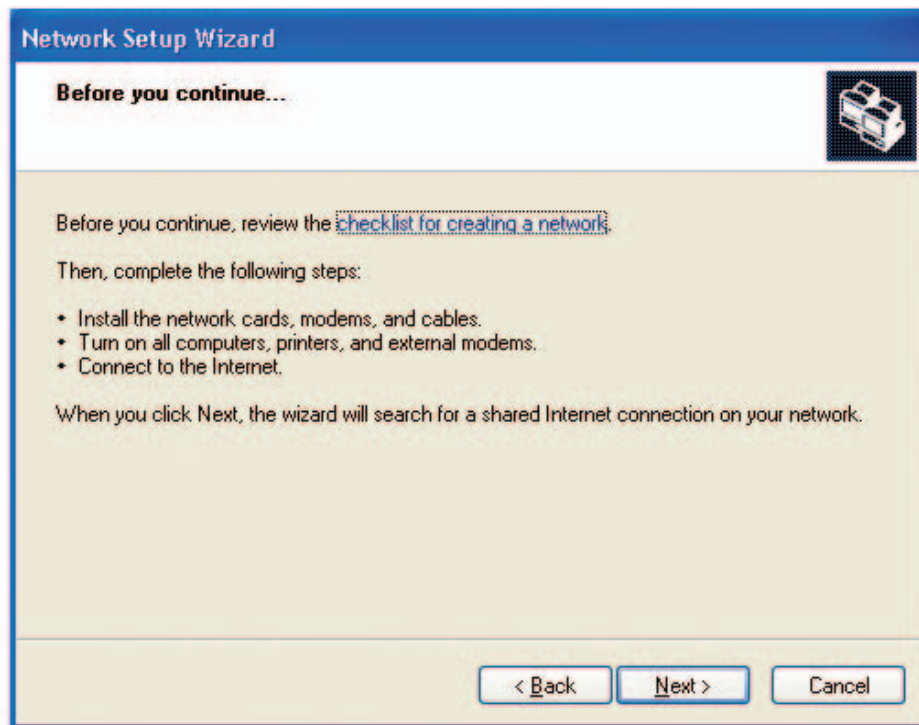
Note: Please refer to websites such as <http://www.homenethelp.com> and <http://www.microsoft.com/windows2000> for information about networking computers using Windows 2000, Me or 98.

Go to **Start>Control Panel>Network Connections**
Select **Set up a home or small office network**



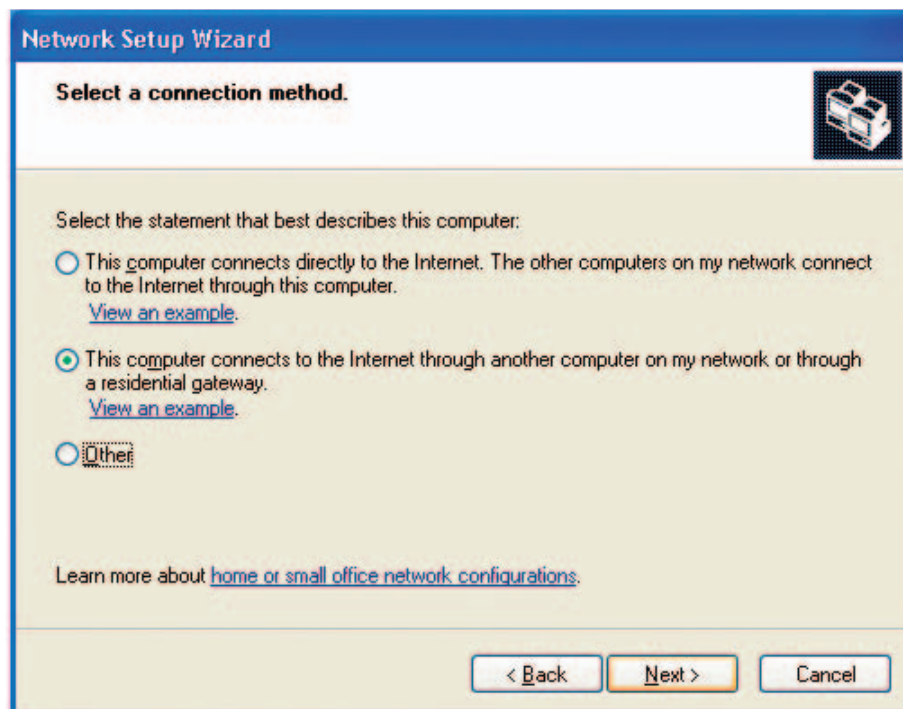
When this screen appears, click **Next**.

Please follow all the instructions in this window:



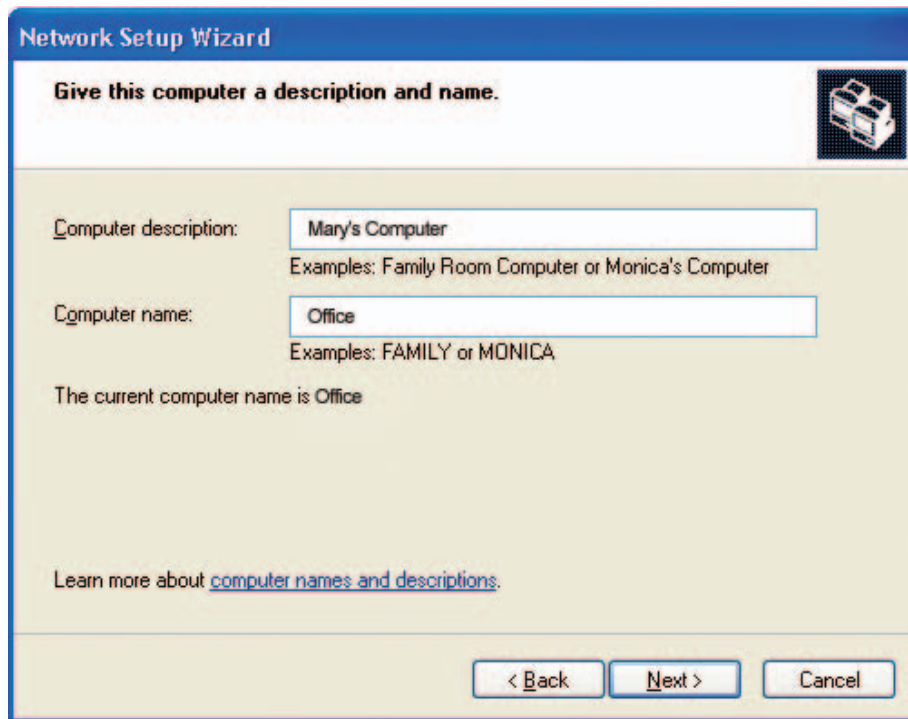
Click **Next**.

In the following window, select the best description of your computer. If your computer connects to the internet through a gateway/router, select the second option as shown.



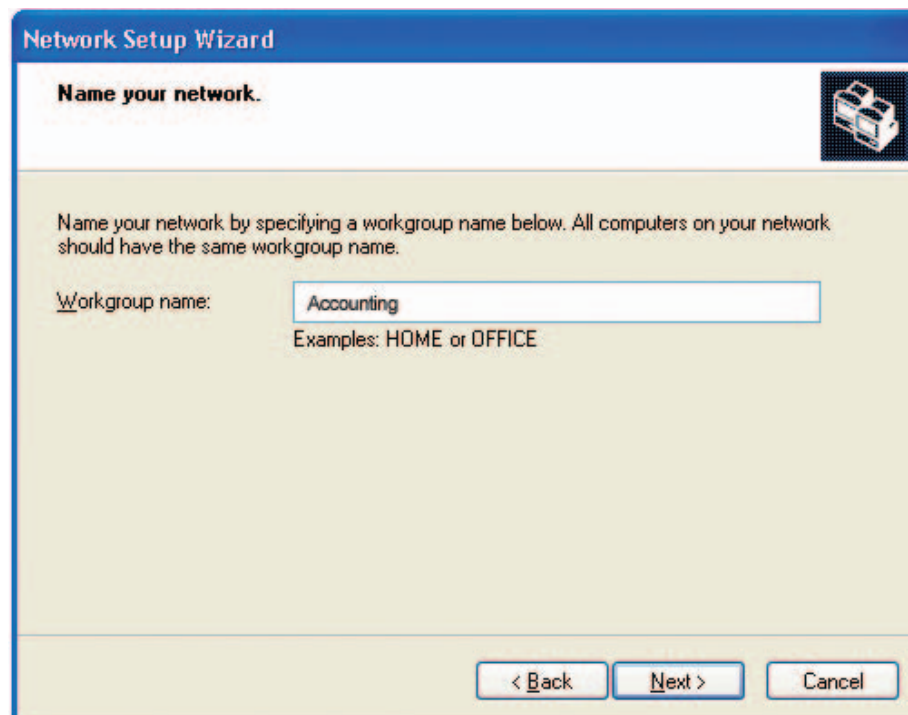
Click **Next**.

Enter a **Computer description** and a **Computer name** (optional).



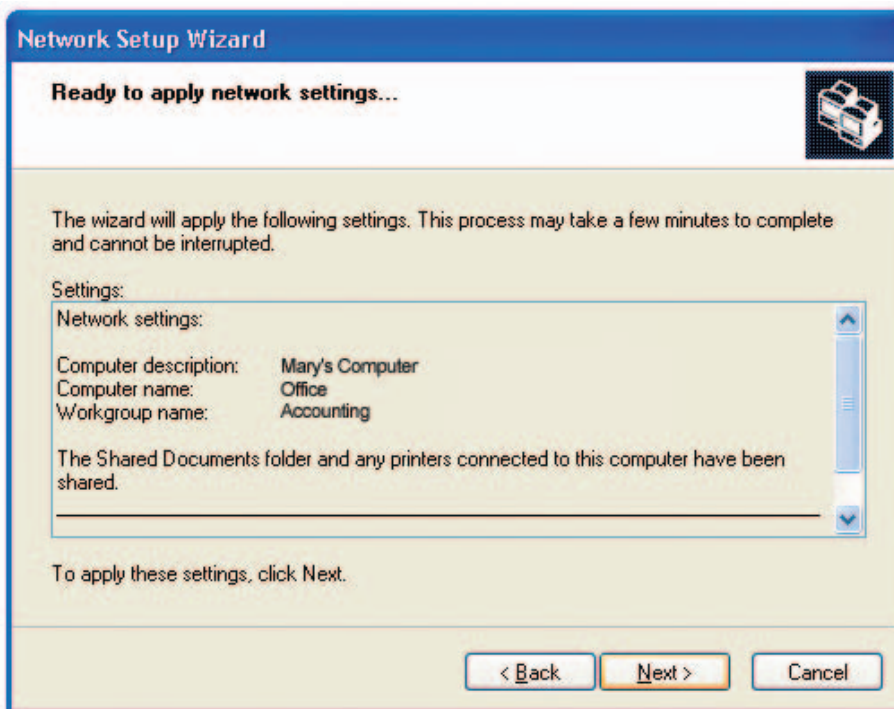
Click **Next**.

Enter a **Workgroup** name. All computers on your network should have the same **Workgroup** name.



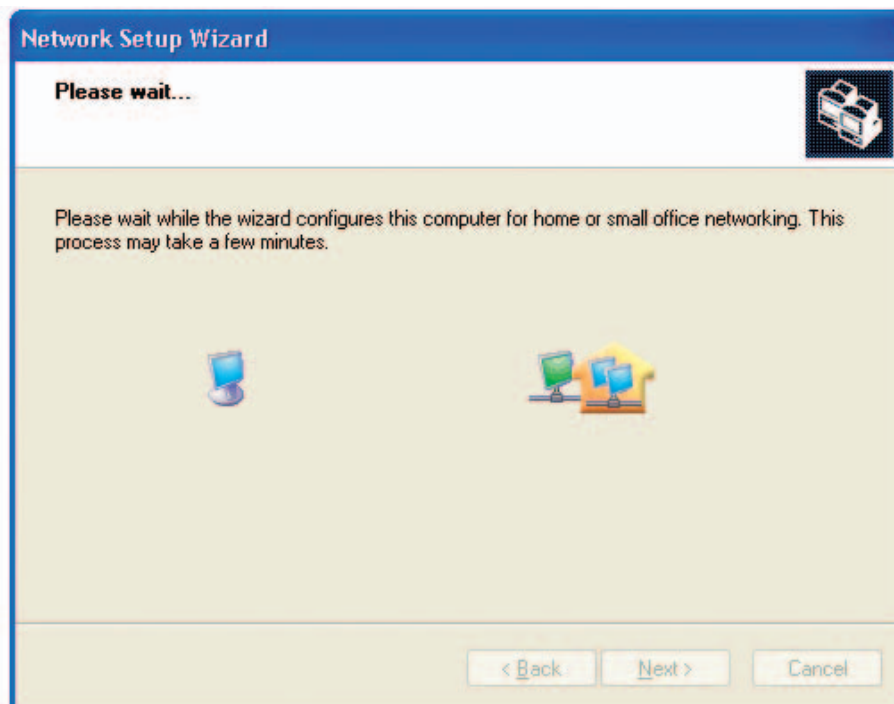
Click **Next**.

Please wait while the **Network Setup Wizard** applies the changes.

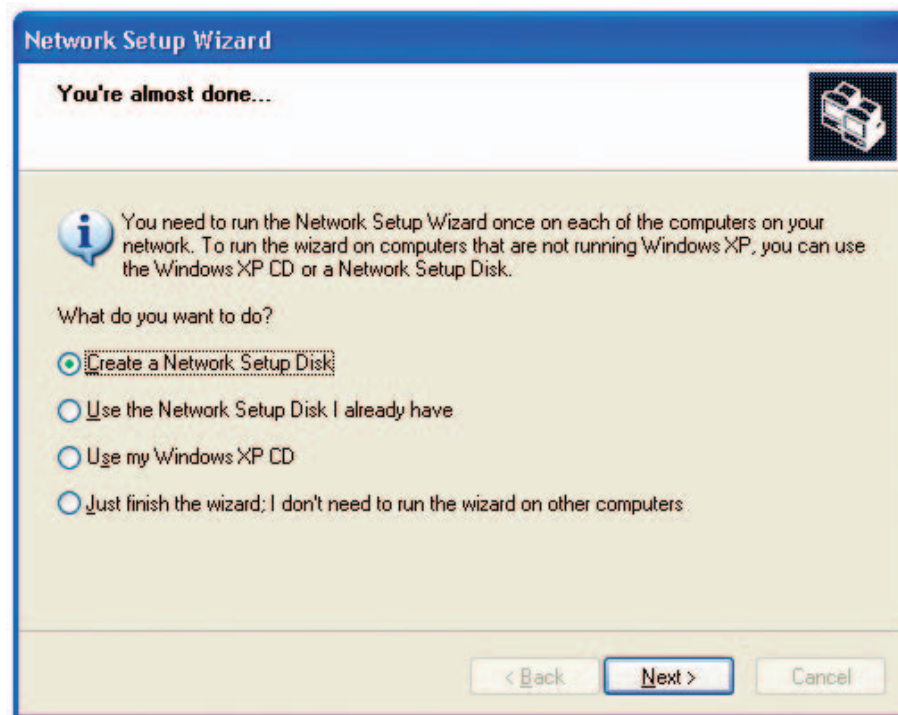


When the changes are complete, click **Next**.

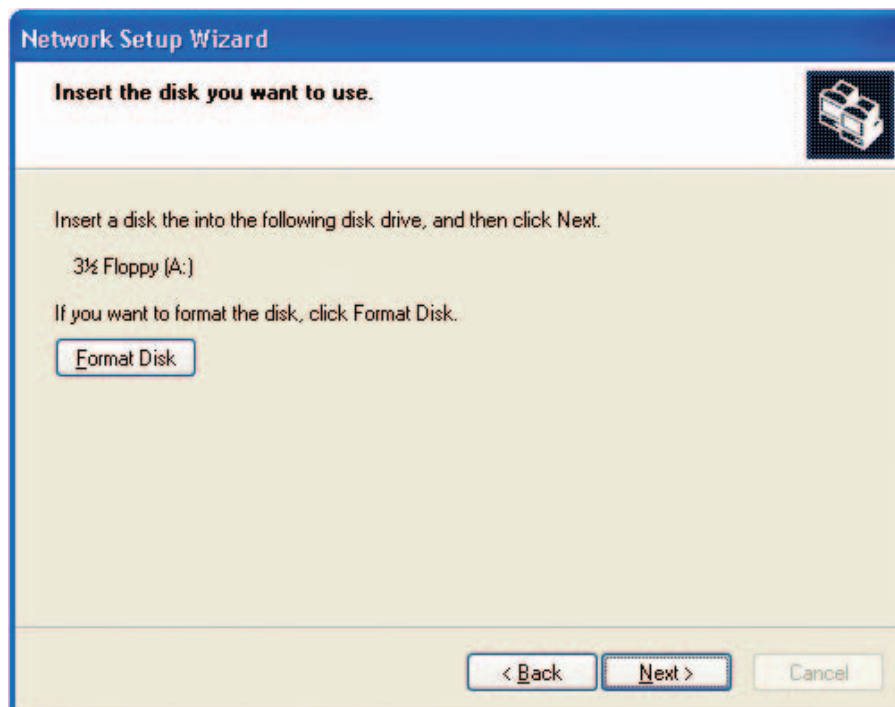
Please wait while the **Network Setup Wizard** configures the computer. This may take a few minutes.



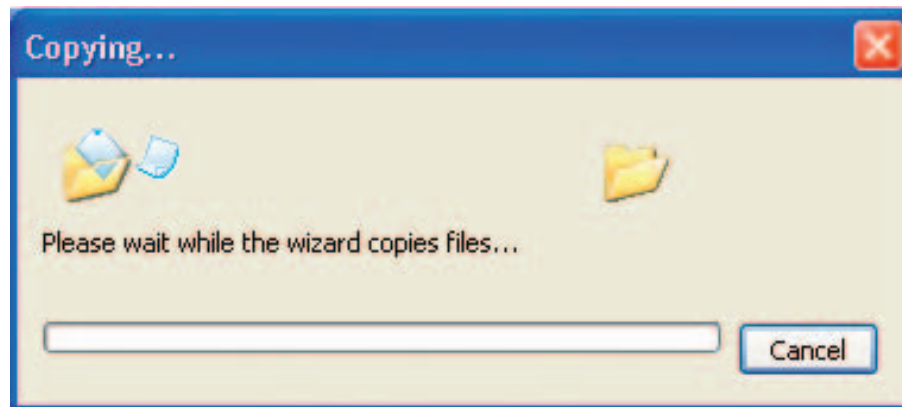
In the window below, select the option that fits your needs. In this example, **Create a Network Setup Disk** has been selected. You will run this disk on each of the computers on your network. Click **Next**.



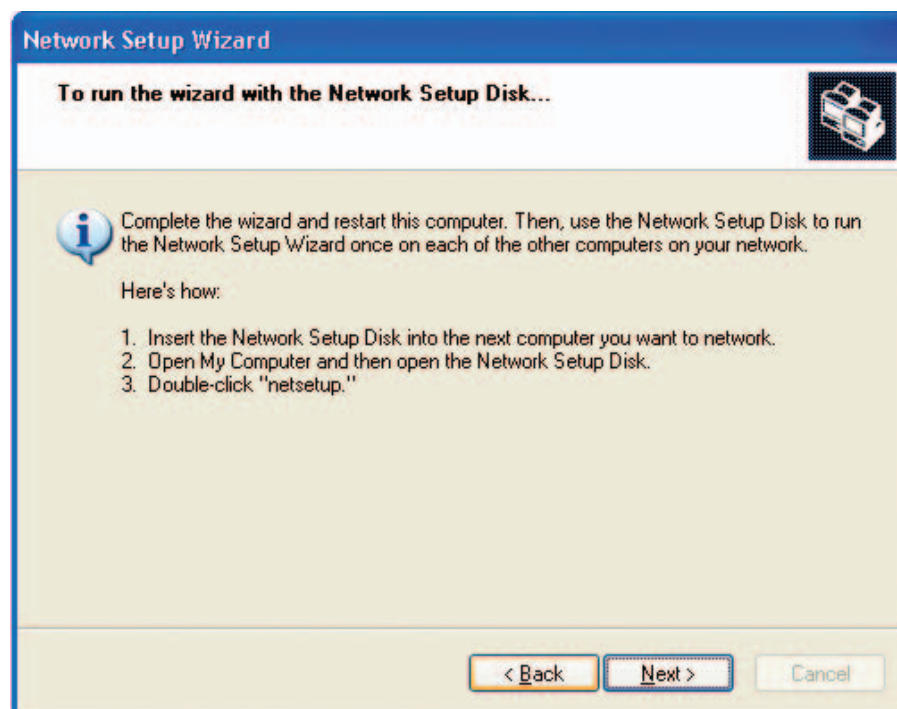
Insert a disk into the Floppy Disk Drive, in this case drive **A**.



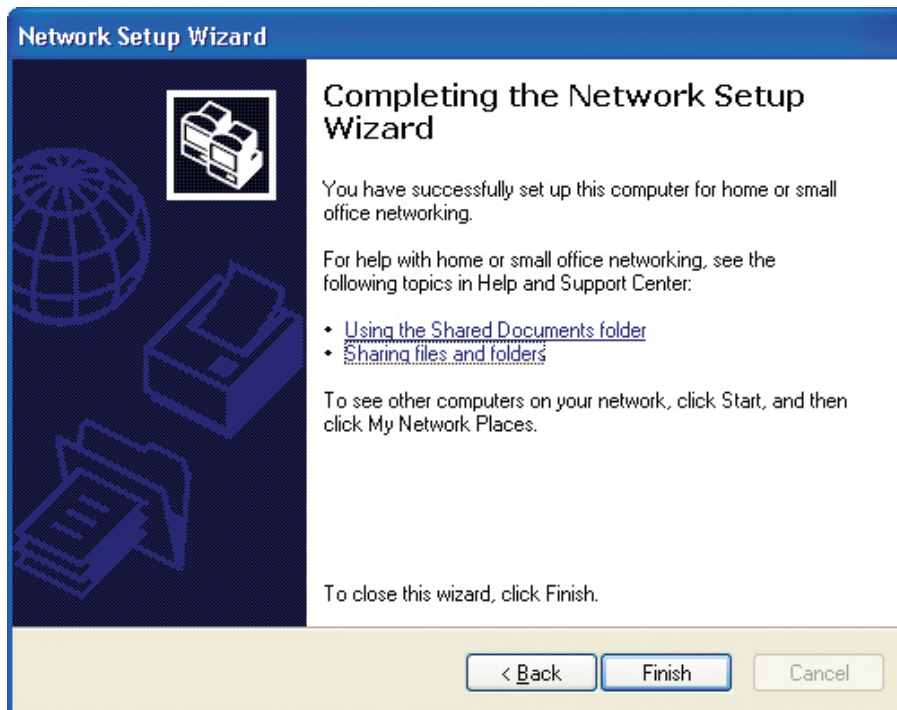
Click **Next**.



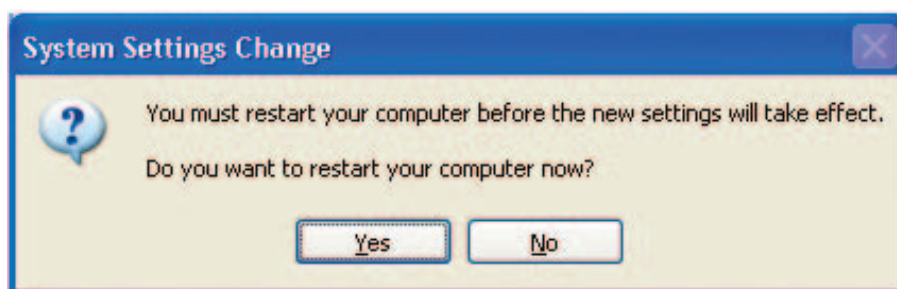
Please read the information under **Here's how** in the screen below. After you complete the **Network Setup Wizard** you will use the **Network Setup Disk** to run the **Network Setup Wizard** once on each of the computers on your network. To continue click **Next**.



Please read the information on this screen, then click **Finish** to complete the **Network Setup Wizard**.



The new settings will take effect when you restart the computer. Click **Yes** to restart the computer.



You have completed configuring this computer. Next, you will need to run the **Network Setup Disk** on all the other computers on your network. After running the **Network Setup Disk** on all your computers, your new wireless network will be ready to use.

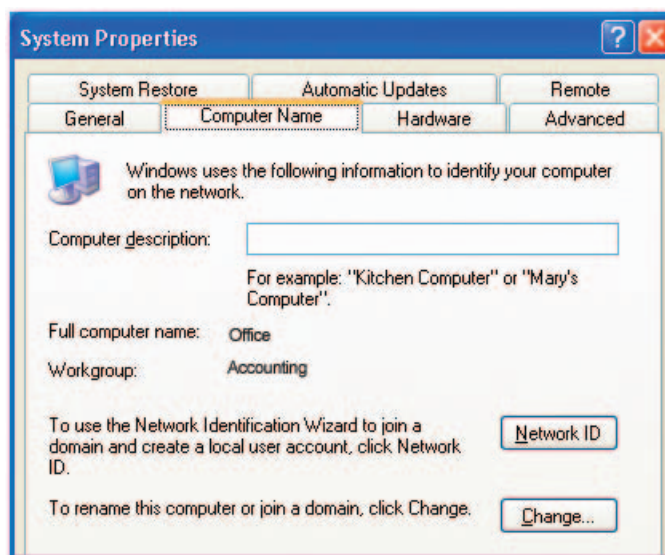
Naming Your Computer

To name your computer in **Windows XP**, please follow these directions.

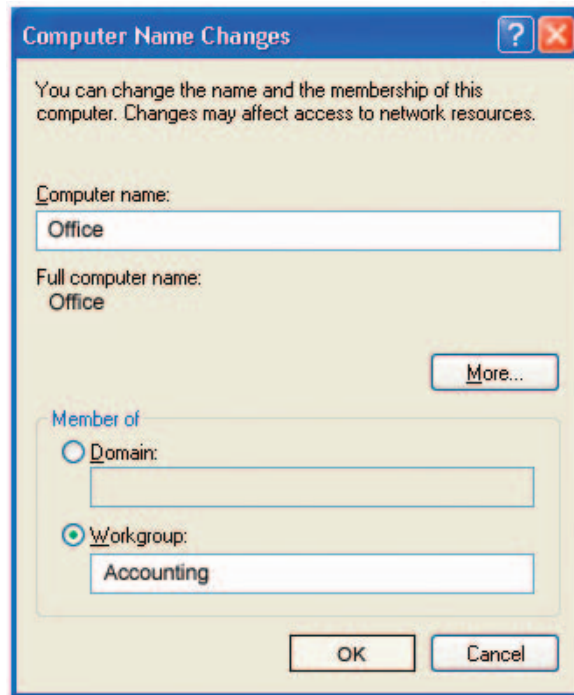
- Click **Start** (in the lower left corner of the screen).
- **Right-click** on **My Computer**.
- Select **Properties** and click.



- Select the **Computer Name Tab** in the System Properties window.
- You may enter a **Computer Description** if you wish; this field is optional.
- To rename the computer and join a domain, Click **Change**.



- In this window, enter the **Computer name**.
- Select **Workgroup** and enter the name of the **Workgroup**.
- All computers on your network must have the same **Workgroup** name.
- Click **OK**.



Checking the IP Address in Windows XP

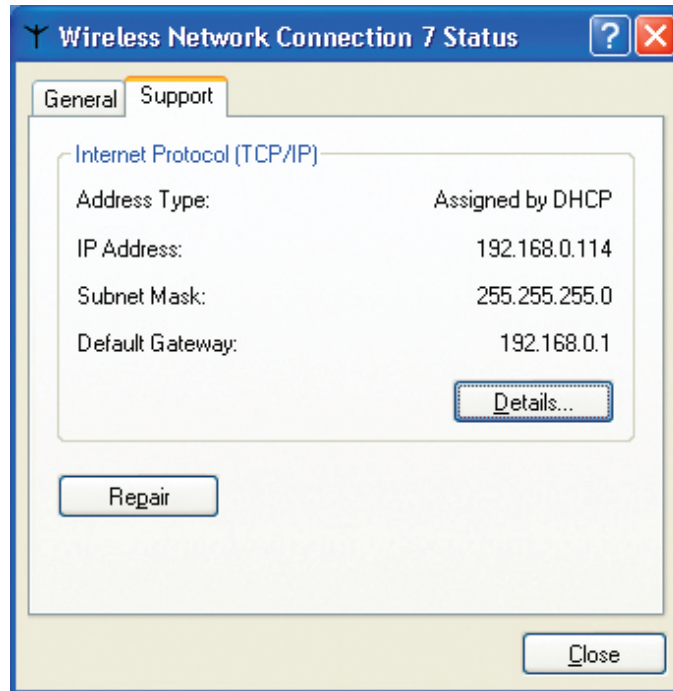
The wireless adapter-equipped computers in your network must be in the same IP Address range (see Getting Started in this manual for a definition of IP Address Range.) To check on the IP Address of the adapter, please do the following:

- Right-click on the **Local Area Connection icon** in the task bar.
- Click on **Status**.



This window will appear:

- Click the **Support** tab.
- Click **Close**.

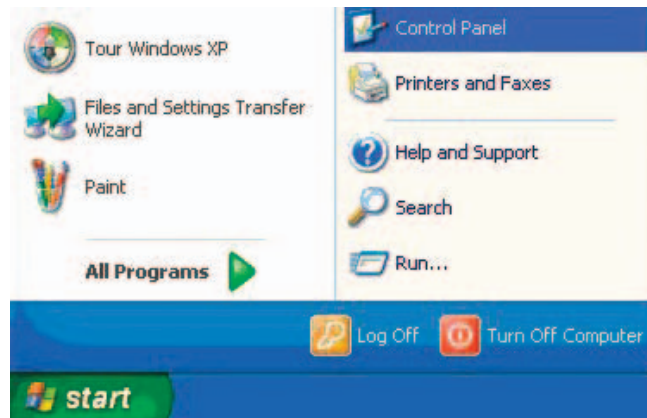


Assigning a Static IP Address in Windows XP/2000

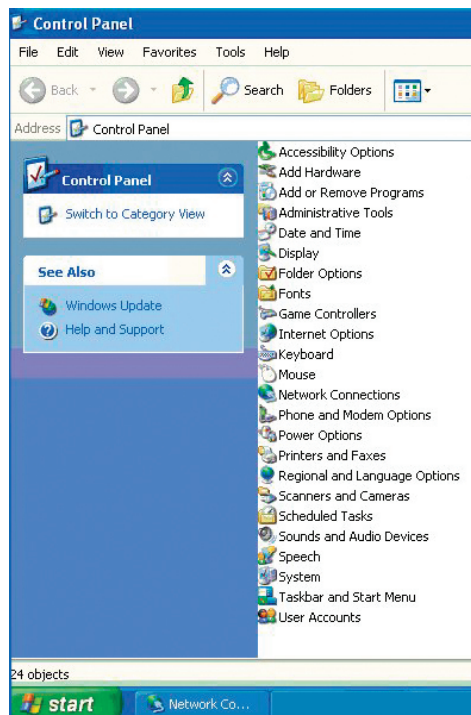
Note: DHCP-enabled routers will automatically assign IP addresses to the computers on the network, using DHCP (Dynamic Host Configuration Protocol) technology. If you are using a DHCP-capable router you will not need to assign static IP addresses.

If you are not using a DHCP capable router, or you need to assign a static IP address, please follow these instructions:

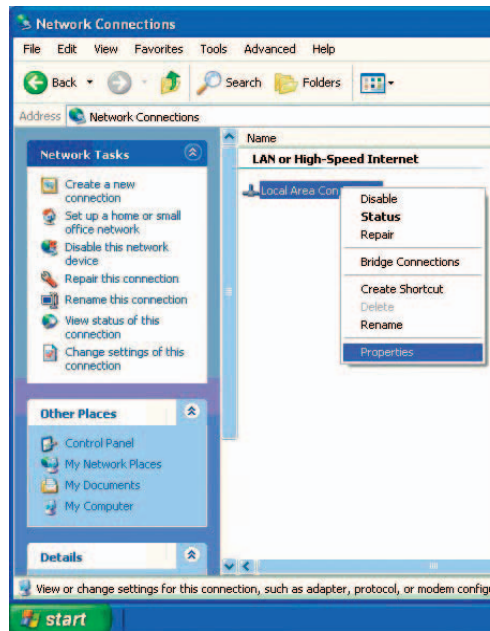
- Go to **Start**.
- Double-click on **Control Panel**.



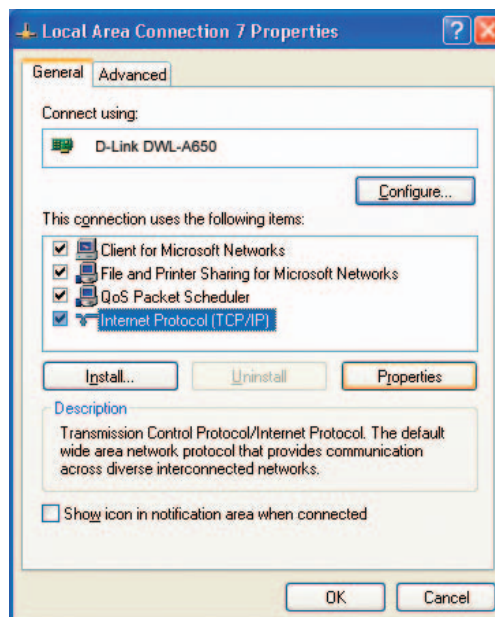
- Double-click on **Network Connections**.



- Right-click on **Local Area Connections**.
- Double-click on **Properties**.



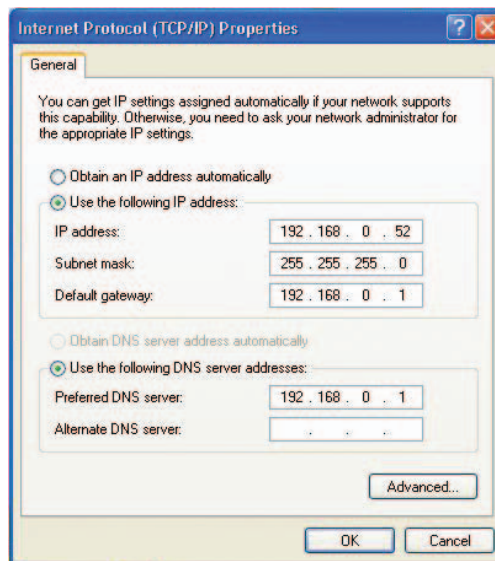
- Click on **Internet Protocol (TCP/IP)**.
- Click **Properties**.
- Input your **IP address and subnet mask**. (The IP addresses on your network must be within the same range. For example, if one computer has an IP address of 192.168.0.2, the other computers should have IP addresses that are sequential, like 192.168.0.3 and 192.168.0.4. The subnet mask must be the same for all the computers on the network.)



- Input your **DNS server addresses**. (Note: If you are entering a DNS server, you must enter the IP address of the default gateway.)

The DNS server information will be supplied by your ISP (Internet Service Provider.)

- Click **OK**.

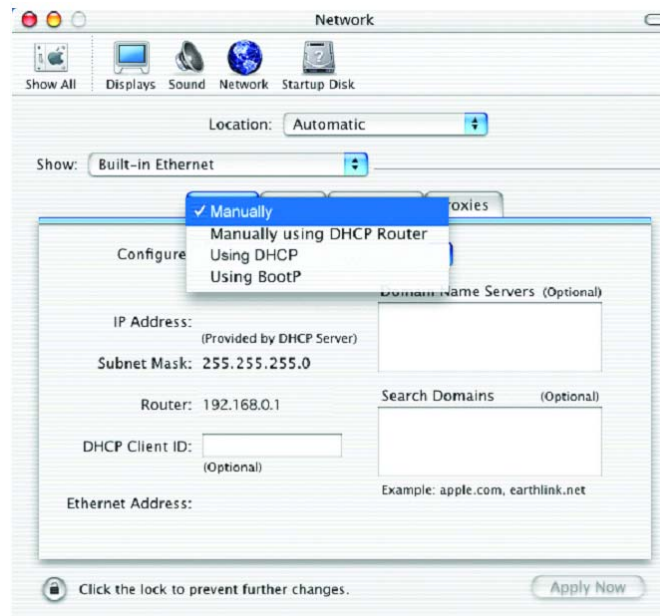


Assigning a Static IP Address in Macintosh OS X

- Go to the **Apple Menu** and select **System Preferences**.
- Click on **Network**.



- Select **Built-in Ethernet** in the **Show** pull-down menu.
- Select **Manually** in the **Configure** pull-down menu.



- Input the **Static IP Address**, the **Subnet Mask** and the **Router IP Address** in the appropriate fields.
- Click **Apply Now**.

