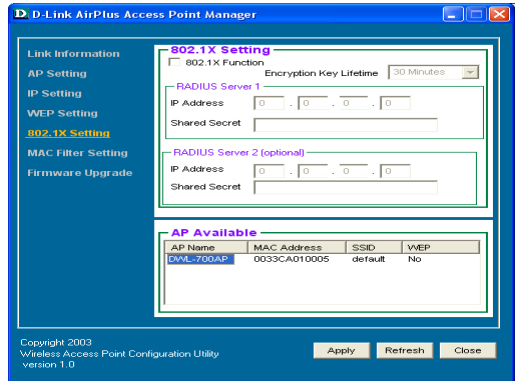


# Using the AirPlus AP Manager (continued)

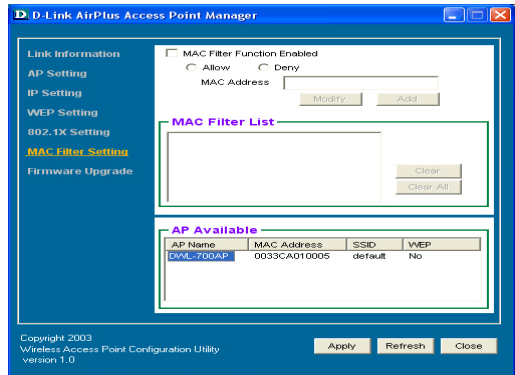
## 802.1X Setting

The default setting of 802.1x is disabled. Input the IP Address of the radius server and the Shared Secret to make the 802.1x function work properly.



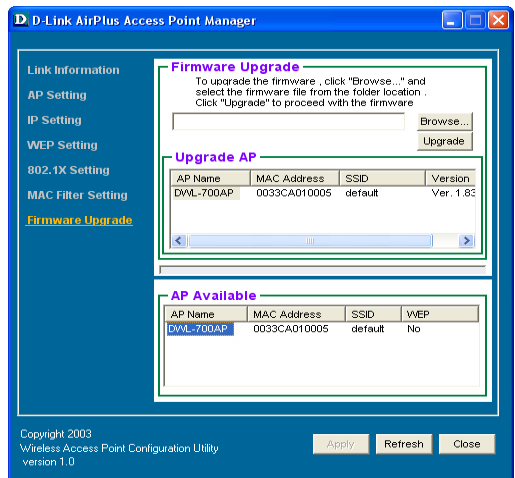
## MAC Filter Setting

The MAC Filter can allow or deny wireless connection to the DWL-700AP. Select Allow or Deny and enter the MAC address of the selected computer into the field above.



## Firmware Upgrade

The Firmware Upgrade screen will allow you to apply new version of the firmware to selected Access Point.



# 7. Troubleshooting

This chapter provides solutions to problems that can occur during the installation and operation of the DWL-700AP Wireless Access Point. We cover various aspects of the network setup, including the network adapters. Please read the following if you are having problems.

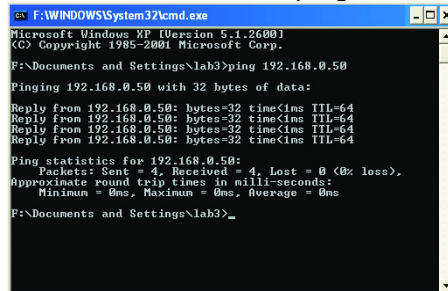
**Note: It is recommended that you use an Ethernet connection to configure the DWL-700AP Access Point.**

## 1. The computer used to configure the DWL-700AP cannot access the Configuration menu.

- Check that the **Ethernet LED** on the DWL-700AP is **ON**. If the **LED** is not **ON**, check that the cable for the Ethernet connection is securely inserted.
- Check that the Ethernet Adapter is working properly. Please see item 3 (**Check that the drivers for the network adapters are installed properly**) in this **Troubleshooting** section to check that the drivers are loaded properly.
- Check that the **IP Address** is in the same range and subnet as the DWL-700AP. Please see **Checking the IP Address in Windows XP** in the **Networking Basics** section of this manual.

**Note: The IP Address of the DWL-700AP is 192.168.0.50. All the computers on the network must have a unique IP Address in the same range, e.g., 192.168.0.x. Any computers that have identical IP Addresses will not be visible on the network. They must all have the same subnet mask, e.g., 255.255.255.0**

- Do a **Ping test** to make sure that the DWL-700AP is responding. Go to **Start>Run>Type Command>Type ping 192.168.0.50**. A successful ping will show four replies.



```
F:\WINDOWS\System32\cmd.exe
Microsoft Windows XP [Version 5.1.2600]
(C) Copyright 1985-2001 Microsoft Corp.

F:\Documents and Settings\lab3>ping 192.168.0.50

Pinging 192.168.0.50 with 32 bytes of data:

Reply from 192.168.0.50: bytes=32 time=1ms TTL=64
Reply from 192.168.0.50: bytes=32 time=1ms TTL=64
Reply from 192.168.0.50: bytes=32 time=1ms TTL=64
Reply from 192.168.0.50: bytes=32 time=1ms TTL=64

Ping statistics for 192.168.0.50:
    Packets: Sent = 4, Received = 4, Lost = 0 (0% loss),
    Approximate round trip times in milli-seconds:
        Minimum = 0ms, Maximum = 0ms, Average = 0ms

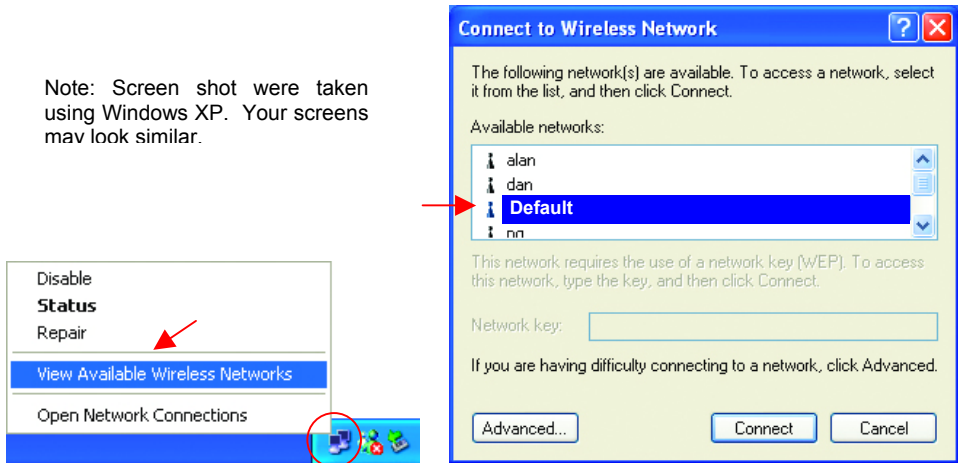
F:\Documents and Settings\lab3>
```

# Troubleshooting

## 2. The wireless client cannot access the Internet in the Infrastructure mode.

- Make sure the wireless client is associated and joined with the correct Access Point. To check this connection: **Right-click** on the **Local Area Connection icon** in the taskbar > select **View Available Wireless Networks**. The **Connect to Wireless Network** screen will appear. Please make sure you have selected the correct available network, as shown in the illustrations below.

Note: Screen shot were taken using Windows XP. Your screens may look similar.



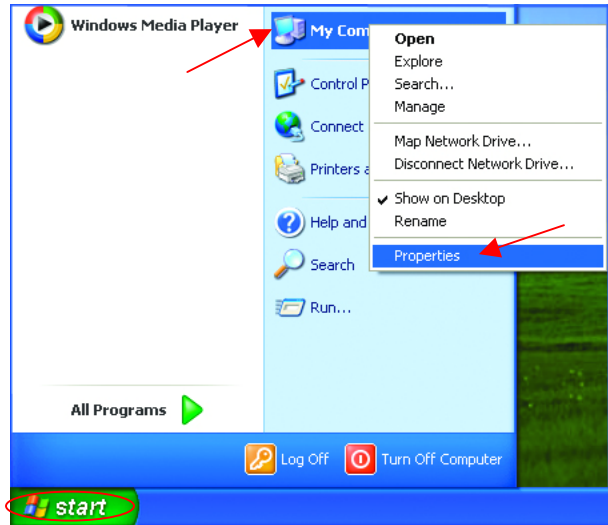
- Check that the **IP Address** assigned to the wireless adapter is within the same **IP Address range** as the access point and gateway. *Since the DWL-700AP has an IP Address of 192.168.0.50, wireless adapters must have an IP Address in the same range, e.g., 192.168.0.x. Each device must have a unique IP Address; no two devices may have the same IP Address. The subnet mask must be the same for all the computers on the network.)* To check the **IP Address** assigned to the wireless adapter, **double-click** on the **Local Area Connection icon** in the taskbar > select the **Support tab** and the **IP Address** will be displayed. (Please refer to **Checking the IP Address** in the **Networking Basics** section of this manual.)
- If it is necessary to assign a **Static IP Address** to the wireless adapter, please refer to the appropriate section in **Networking Basics**. If you are entering a **DNS Server address** you must also enter the **Default Gateway Address**. *(Remember that if you have a DHCP-capable router, you will not need to assign a Static IP Address. See **Networking Basics: Assigning a Static IP Address**.)*

# Troubleshooting

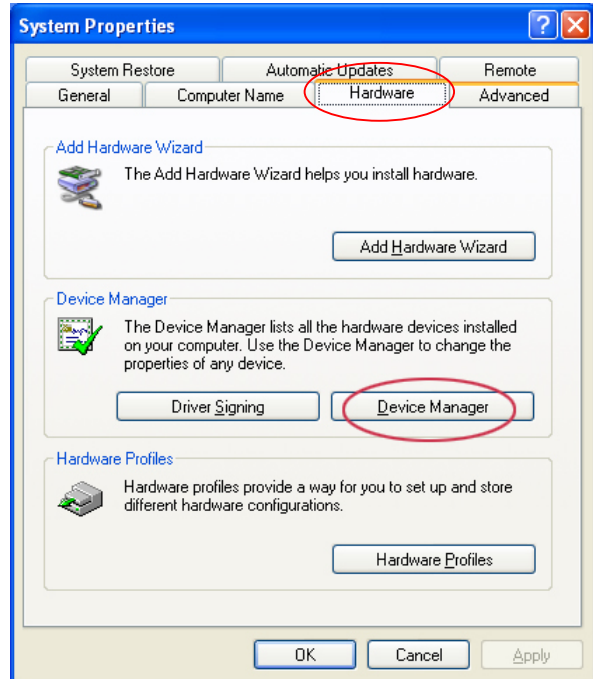
## 3. Check that the drivers for the network adapters are installed properly.

You may be using different network adapters than those illustrated here, but this procedure will remain the same, regardless of the type of network adapters you are using.

- Go to **Start**
- **Right-click** on **My Computer**
- Click **Properties**

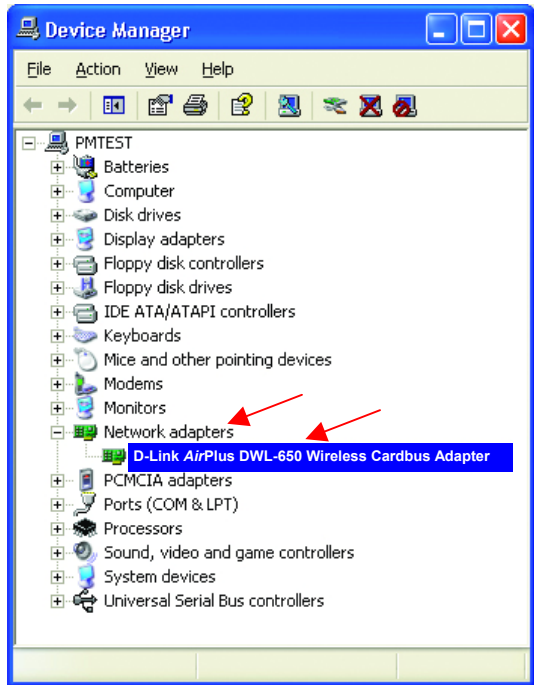


- **Select the Hardware Tab**
- Click **Device Manager**

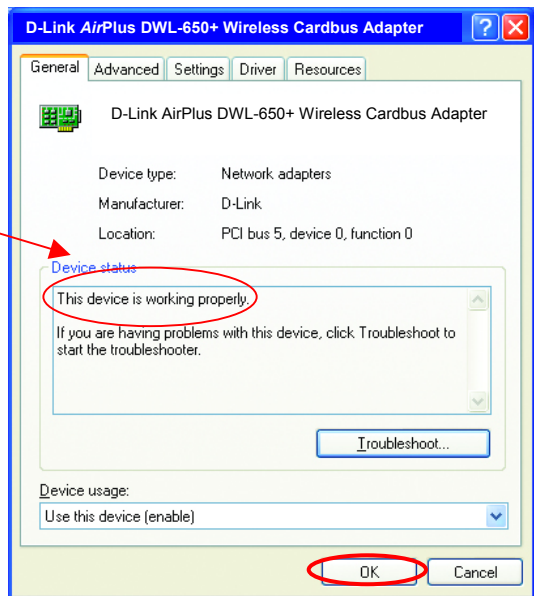


# Troubleshooting

- Double-click on **Network Adapters**
- Right-click on **D-Link AirPlus DWL-650+ Wireless Cardbus Adapter**
- Select **Properties** to check that the drivers are installed properly



- Look under **Device Status** to check that the device is working properly.



- Click **OK**

## Troubleshooting

### 4. Resetting the DWL-700AP to Factory Default Settings

After you have tried other methods for troubleshooting your network, you may choose to **Reset** the DWL-700AP to the factory default settings. Remember that D-Link *AirPlus* products network together, out of the box, at the factory default settings.



To hard-reset the D-Link *AirPlus* DWL-700AP to Factory Default Settings, please do the following:

- Locate the **Reset** button on the back of the DWL-700AP
- Use a paper clip to press the **Reset** button.
- Hold for about 5 seconds and then release
- After the DWL-700AP reboots (this may take a few minutes) it will be reset to the factory **Default** settings.

## 8. Networking Basics

### Using the Network Setup Wizard in Windows XP

In this section you will learn how to establish a network at home or work, using **Microsoft Windows XP**.

*Note: Please refer to websites such as <http://www.homenethelp.com> and <http://www.microsoft.com/windows2000> for information about networking computers using Windows 2000, ME or 98.*

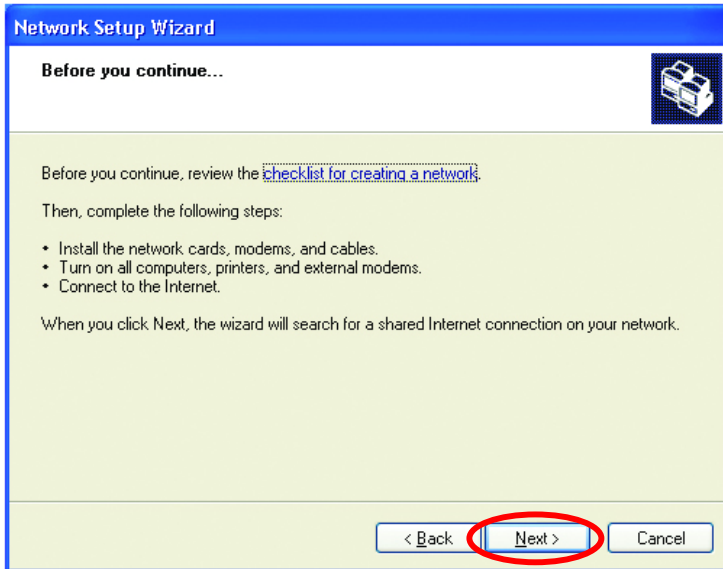
Go to **Start>Control Panel>Network Connections**  
Select **Set up a home or small office network**



When this screen appears, **Click Next.**

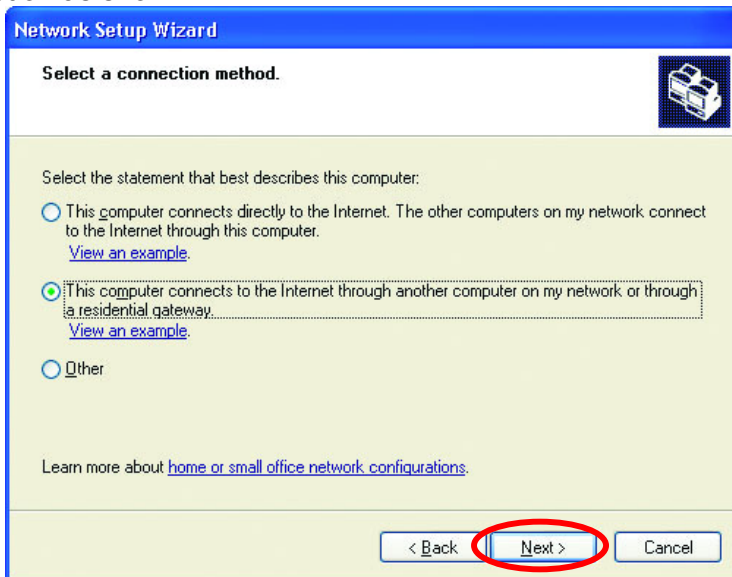
## Networking Basics (continued)

Please follow all the instructions in this window:



Click **Next**

In the following window, select the best description of your computer. If your computer connects to the Internet through a gateway/router, select the second option as shown.

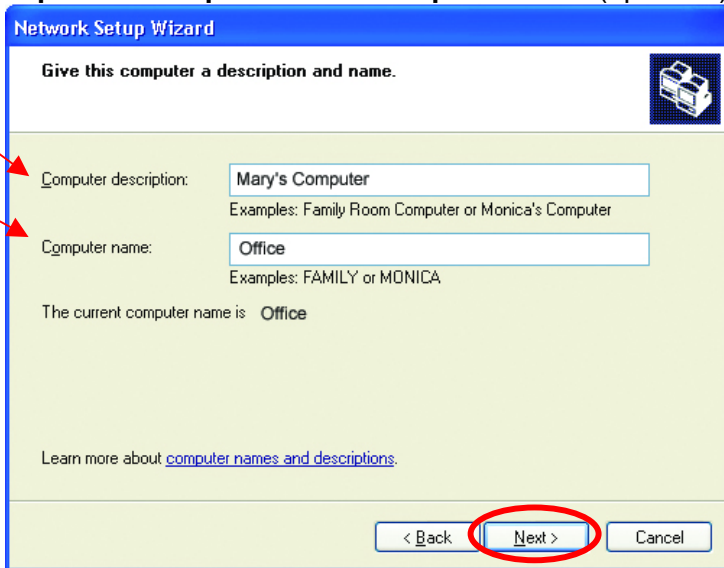


Click **Next**



## Networking Basics (continued)

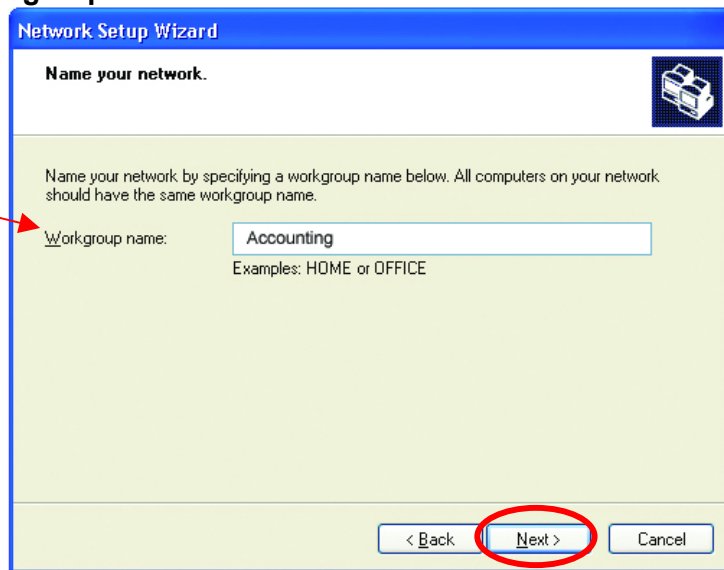
Enter a **Computer description** and a **Computer name** (optional.)



The screenshot shows the 'Network Setup Wizard' window with the title 'Give this computer a description and name.' It features a computer icon in the top right. The main area contains two text input fields: 'Computer description:' with the text 'Mary's Computer' and 'Examples: Family Room Computer or Monica's Computer', and 'Computer name:' with the text 'Office' and 'Examples: FAMILY or MONICA'. Below these fields, it states 'The current computer name is: Office'. At the bottom, there are three buttons: '< Back', 'Next >', and 'Cancel'. The 'Next >' button is circled in red. Two red arrows point to the input fields from the left.

Click **Next**

Enter a **Workgroup** name. All computers on your network should have the same **Workgroup** name.

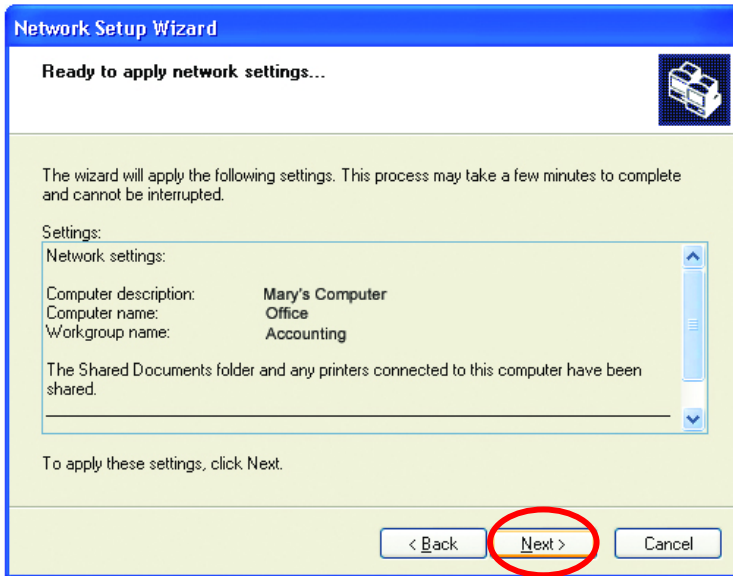


The screenshot shows the 'Network Setup Wizard' window with the title 'Name your network.' It features a computer icon in the top right. The main area contains a text input field for 'Workgroup name:' with the text 'Accounting' and 'Examples: HOME or OFFICE'. Below the field, it states 'Name your network by specifying a workgroup name below. All computers on your network should have the same workgroup name.' At the bottom, there are three buttons: '< Back', 'Next >', and 'Cancel'. The 'Next >' button is circled in red. A red arrow points to the input field from the left.

Click **Next**

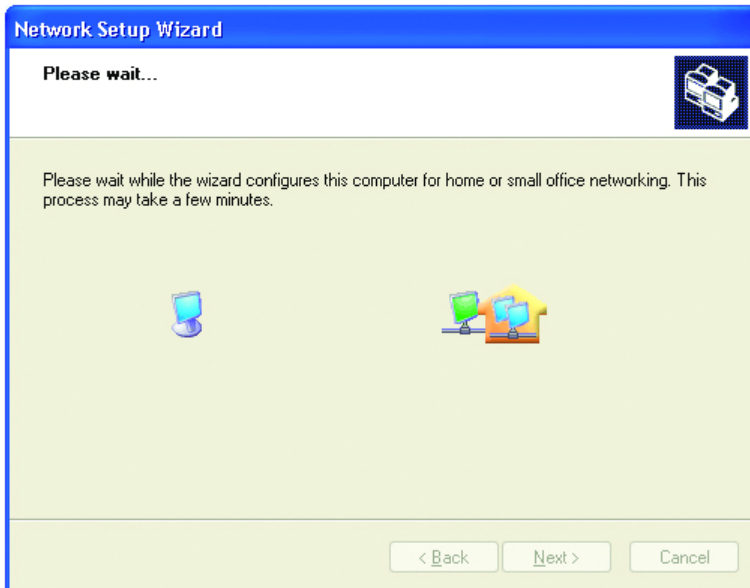
## Networking Basics (continued)

Please wait while the **Network Setup Wizard** applies the changes.



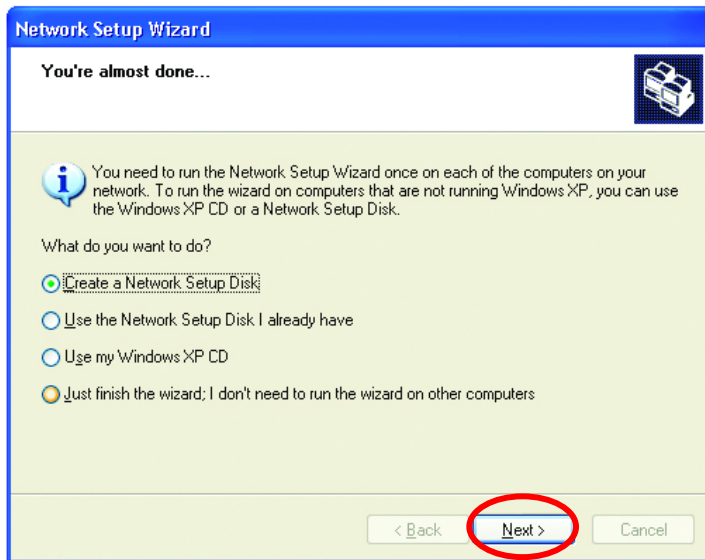
When the changes are complete, click **Next**.

Please wait while the **Network Setup Wizard** configures the computer. This may take a few minutes.

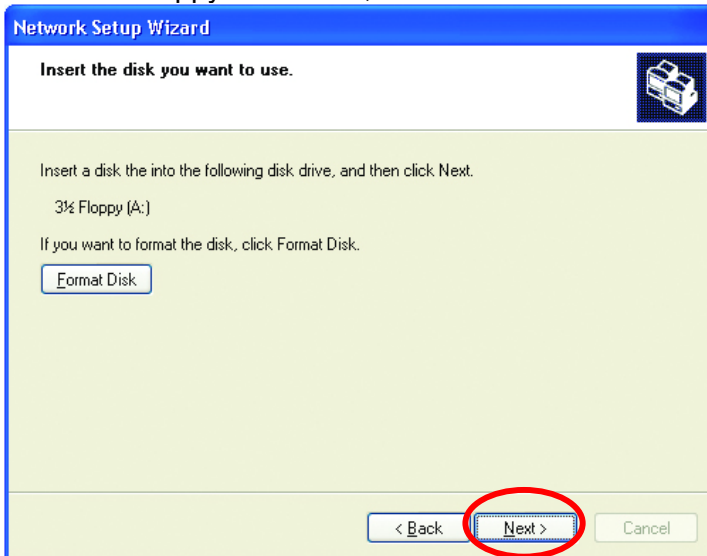


## Networking Basics (continued)

In the window below, select the option that fits your needs. In this example, **Create a Network Setup Disk** has been selected. You will run this disk on each of the computers on your network. Click **Next**.



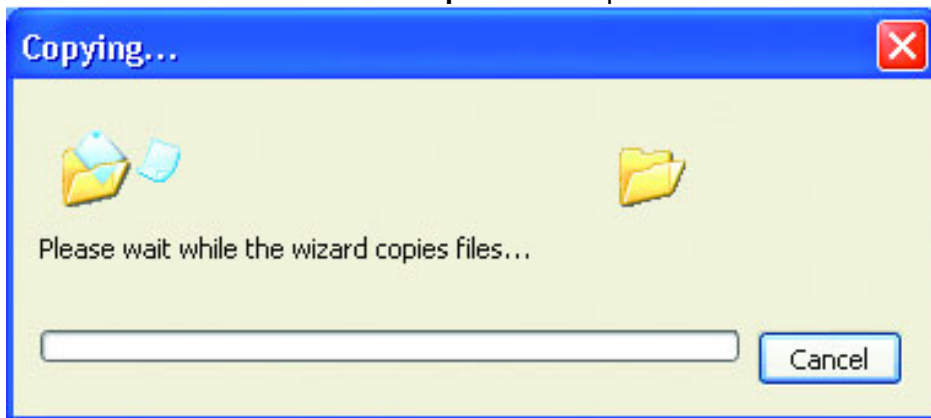
Insert a disk into the Floppy Disk Drive, in this case drive **A**.



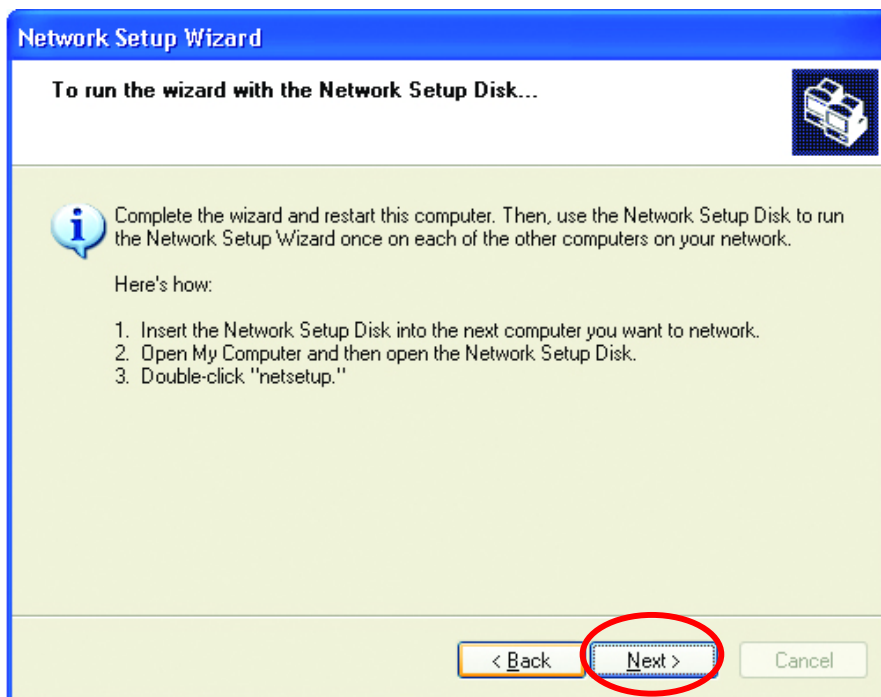
Format the disk if you wish, and click **Next**.

## Networking Basics (continued)

Please wait while the **Network Setup Wizard** copies the files.

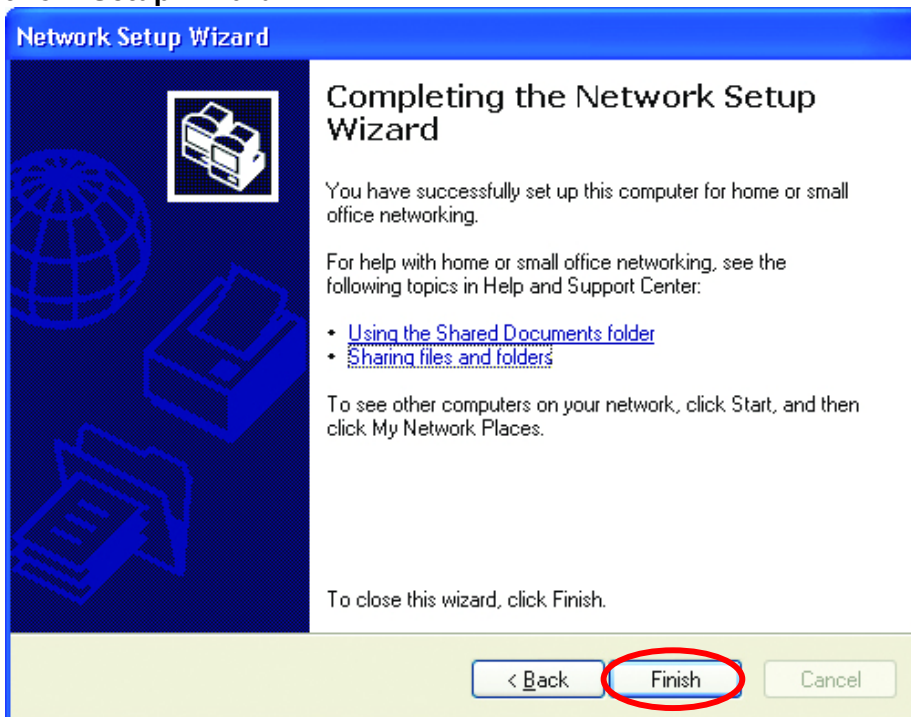


Please read the information under **Here's how** in the screen below. After you complete the **Network Setup Wizard** you will use the **Network Setup Disk** to run the **Network Setup Wizard** once on each of the computers on your network. To continue click **Next**.

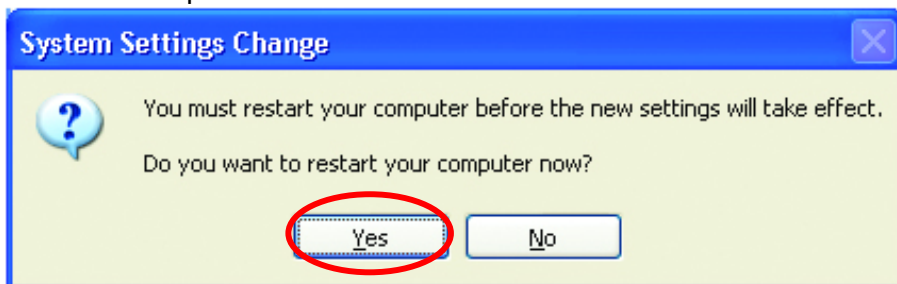


## Networking Basics (continued)

Please read the information on this screen, then click **Finish** to complete the **Network Setup Wizard**.



The new settings will take effect when you restart the computer. Click **Yes** to restart the computer.



You have completed configuring this computer. Next, you will need to run the **Network Setup Disk** on all the other computers on your network. After running the **Network Setup Disk** on all your computers, your new wireless network will be ready to use.

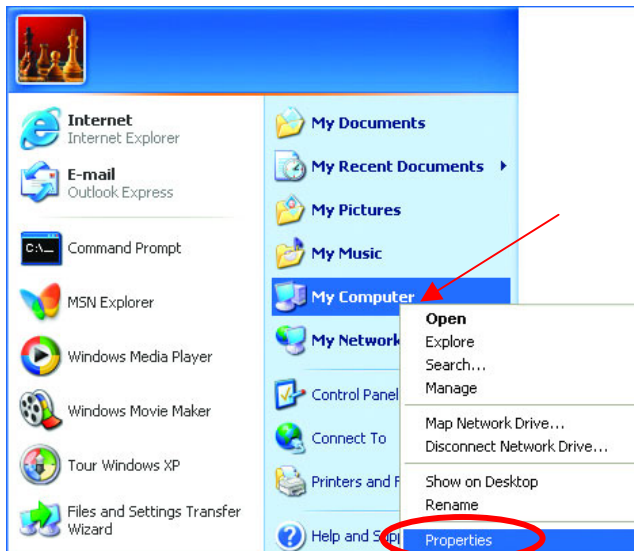
# Networking Basics (continued)

## Naming your Computer

To name your computer, please follow these directions:

In **Windows XP**:

- Click **Start** (in the lower left corner of the screen)
- **Right-click** on **My Computer**
- Select **Properties** and click

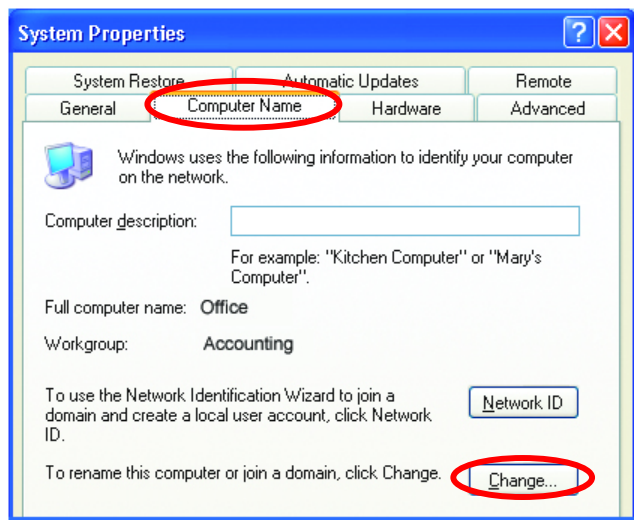


- Select the **Computer Name Tab** in the **System Properties** window.

*You may enter a **Computer description** if you wish, this field is optional.*

To rename the computer and join a domain,

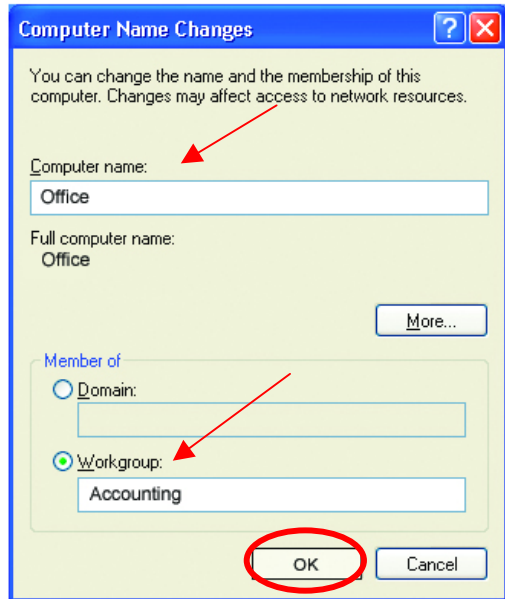
- Click **Change**



# Networking Basics (continued)

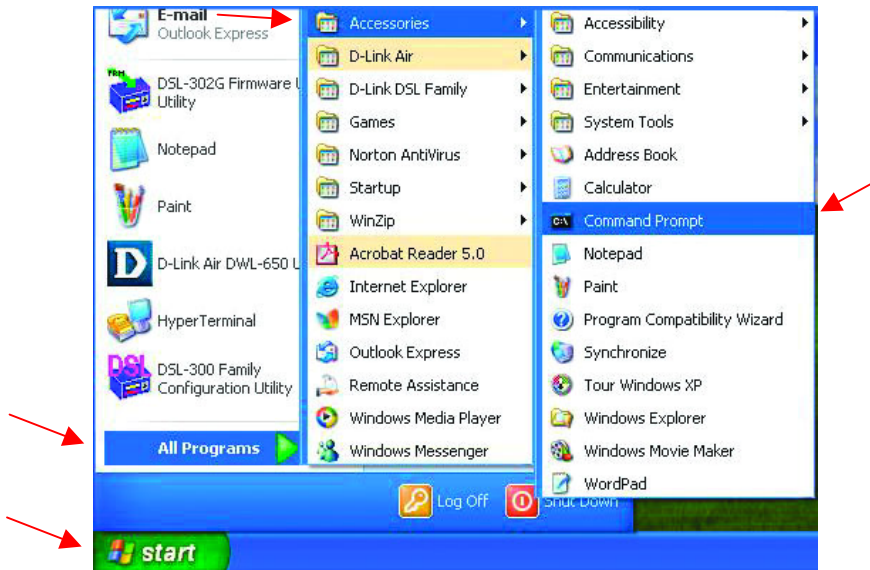
## Naming your Computer

- In this window, enter the **Computer name**.
- Select **Workgroup** and enter the name of the **Workgroup**.
- All computers on your network must have the same **Workgroup** name.
- Click **OK**



## Checking the IP Address in Windows XP/2000

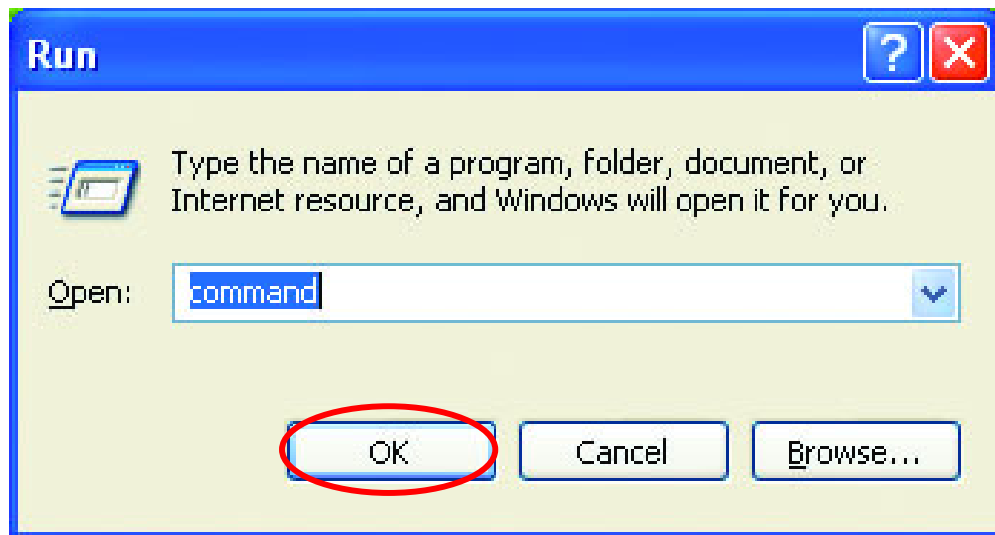
Go to **Start > All Programs > Accessories > Command Prompt**



## Networking Basics (continued)

### Checking the IP Address in Windows XP/2000

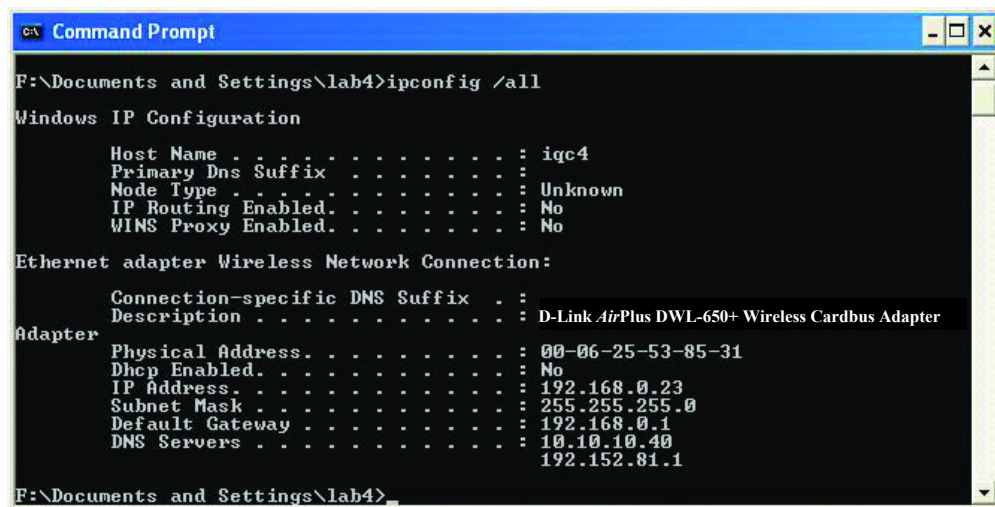
Type Command



Click **OK**

### Checking the IP Address in Windows XP/2000

Type **ipconfig /all** at the prompt. Press **Enter**. All the configuration settings are displayed as shown below.

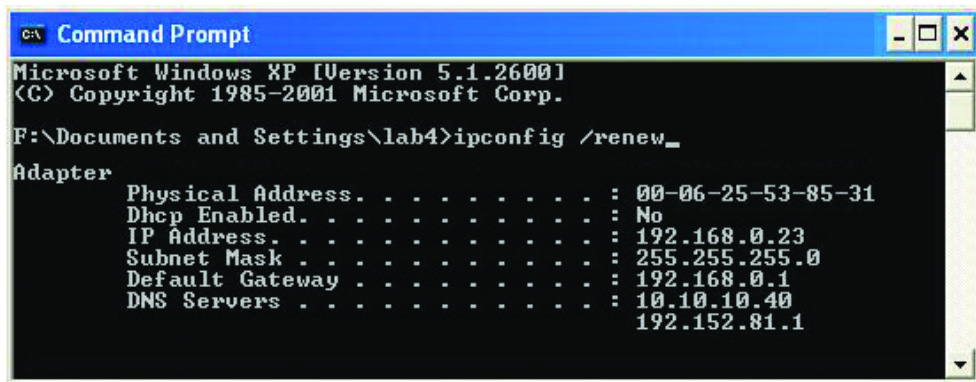




## Networking Basics (continued)

### Checking the IP Address in Windows XP/2000

Type **ipconfig /renew** at the prompt to get a new IP Address. Press **Enter**. The new IP Address is shown below.



```
Command Prompt
Microsoft Windows XP [Version 5.1.2600]
(C) Copyright 1985-2001 Microsoft Corp.

F:\Documents and Settings\lab4>ipconfig /renew_

Adapter
Physical Address. . . . . : 00-06-25-53-85-31
Dhcp Enabled. . . . . : No
IP Address. . . . . : 192.168.0.23
Subnet Mask . . . . . : 255.255.255.0
Default Gateway . . . . . : 192.168.0.1
DNS Servers . . . . . : 10.10.10.40
                       192.152.81.1
```

(Windows 98/ME users: go to **Start > Run**. Type **winipcfg** at the prompt. The Windows IP Configuration menu will come up. Click **Release**, then **Renew** to obtain a new IP Address.)

### Assigning a Static IP Address

**Note: Residential Gateways/Broadband Routers will automatically assign IP Addresses to the computers on the network, using DHCP (Dynamic Host Configuration Protocol) technology. If you are using a DHCP-capable Gateway/Router you will not need to assign Static IP Addresses.**

If you are not using a DHCP capable Gateway/Router, or you need to assign a Static IP Address, please follow these instructions:

- Go to **Start**
- **Double-click** on **Control Panel**

