

Getting Started

Setting Up an Infrastructure Network

Please refer to the following sections of this manual for additional information about setting up a network:

Networking Basics- learn how to check your IP Address; share printers and files.

Using the Configuration Utility- learn the settings you must use on each computer in your network for successful communication.

Troubleshooting- learn how to check for the proper installation of the network adapters' drivers and other tips for troubleshooting the network.

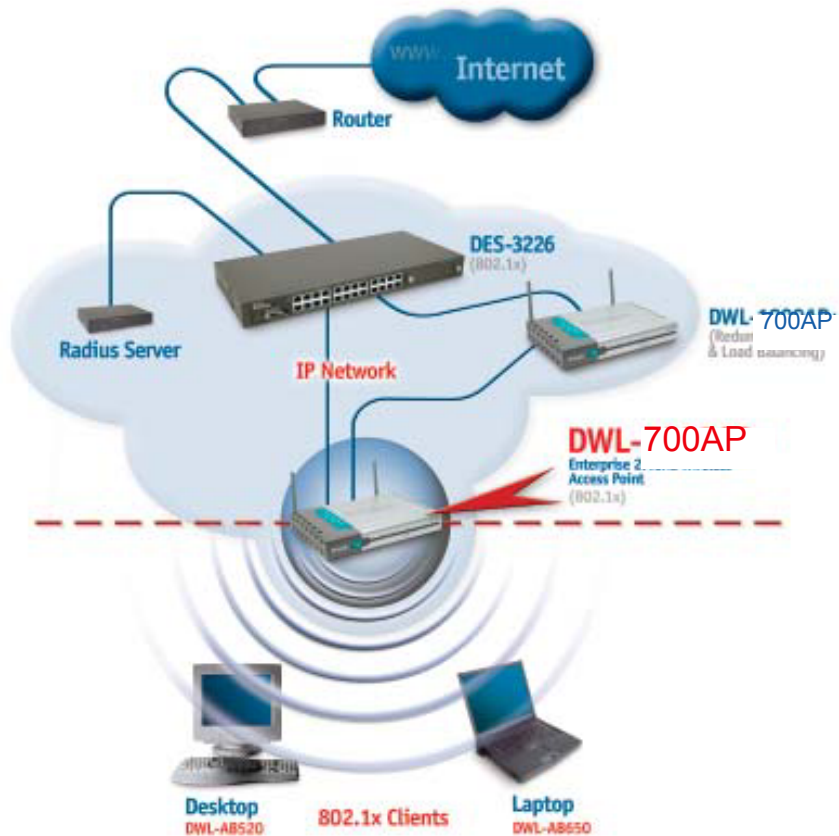


Please remember that **D-Link AirPlus** wireless devices are pre-configured to connect together, right out of the box, with the default settings.

- 1** You will need a broadband Internet access (Cable/DSL) subscription.
- 2** Consult with your Cable/DSL provider for proper installation of the modem.
- 3** Connect the modem to an Ethernet Broadband Router (such as the **D-Link DI-604**) See the **Quick Installation Guide** included with the **DI-604**.
- 4** Connect the router to the **D-Link AirPlus DWL-700AP**. Refer to the **Quick Installation Guide** for setting up the **DWL-700AP**.
- 5** If you are connecting a desktop computer in your network, you can install the **D-Link AirPlus DWL-520+** wireless PCI adapter into an available PCI slot. See the **Quick Installation Guide** included with the **DWL-520+**.
- 6** Install the drivers for the wireless cardbus adapter (**D-Link AirPlus DWL-650+**) into the laptop computer. See the **Quick Installation Guide** included with the **DWL-650+** for installation instructions.

Getting Started

Setting Up an 802.1x Network



Here is a sample of a network setup using the 802.1x compliant DWL-700AP access point. Your network may look different. For successful communication, you will need 802.1x compliant devices, including 802.1x compliant wireless network adapters. If you are using two or more access points in conjunction for **load-balancing** or **backup**, please remember to keep the ethernet cable connection between the access points. An ethernet connection is needed so that IAPP (Inter Access Point Protocol) can be used to enable these functions.

Please read through the configuration section of this manual to learn about the settings you will need for your devices to achieve a faster, safer and more effective wireless network than you have previously experienced.

5. Using the Configuration Menu

The **Configuration Menu** for the DWL-700AP is web-based. When using the configuration program, please consider the following:

You will need a JavaScript-enabled web-browser such as Internet Explorer 4.0 or higher, or Netscape Navigator 4.0 or higher.

The computer that you are using for initial configuration must have an IP Address within the same range as the IP Address of the DWL-700AP. The DWL-700AP has a default IP Address of **192.168.0.50 with subnet mask of **255.255.255.0****

*If you **are** using a D-Link router in your network, such as the DI-604, with the factory default settings, you **will not** need to assign a static IP Address to the computer that you are using to configure the Access Point. (Skip to Fig. 5.1: entering the IP address)*

*If you **are not** using a D-Link router in your network, you **will** need to assign a Static IP Address to the computer that you are using to configure the DWL-700AP, with in the IP Address Range of the DWL-900AP+. Assign a static IP address of **192.168.0.2** with subnet mask of **255.255.255.0** (Please see Networking Basics in this manual for information on Assigning a Static IP Address.) **Note:** Please write down the current IP address settings of the computer. You may need to revert back to these settings after configuring the DWL-900AP+.*

*After you have assigned a Static IP Address to the computer you are using for configuration (if necessary), next you will assign the **DWL-700AP** an IP Address within the range of your existing network.*

After changing the IP Address of the DWL-700AP you will need to enter the IP into the address bar of your web browser to access the configuration page of the DWL-700AP

- *If the computer had a static IP address, re-input that same address.*
- *If the computer had a dynamic IP Address (i.e., a DHCP capable router automatically assigns the IP Address) then change the setting of your network adapter to receive a Dynamic IP Address.*

Factory Default Settings for the DWL-700AP

SSID	default
Channel	6
Encryption	disabled
User Name	admin
Password	<i>(no password, leave field blank)</i>
IP Address	192.168.0.50

Using the Configuration Menu (continued)

Whenever you want to configure your network or the DWL-700AP, you can access the Configuration Utility by opening the web-browser and typing in the IP Address of the DWL-700AP. The DWL-700AP's default IP Address is shown below:

- Open the web browser
- Type in the **IP Address** of the Access Point

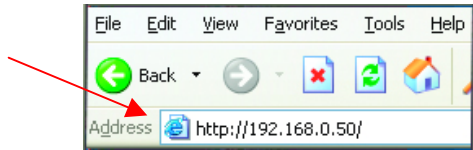


Fig. 5.1

(The IP Address shown in the example above is the default setting. Use this IP address when connecting to a network consisting of other D-Link devices set to their default settings. If you have changed the IP Address of the DWL-700AP to conform to a network other than one with D-Link devices, then input that IP Address in the web browser, instead of the default IP Address shown.)

- Type **admin** in the **User Name** field
- Leave the **Password** blank
- Click **OK**

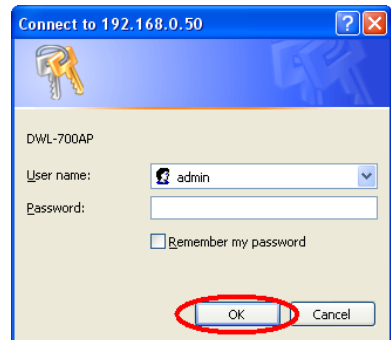


Fig. 5.2

Home > Wireless

The Configuration window will appear. You can select from several options in this window. Here the **Home > Wireless** tab is displayed. If you wish to change the default settings, you can make changes to the following items:

- **AP name**
- **SSID**
- **Channel**
- **WEP Encryption**
- **Key Type**

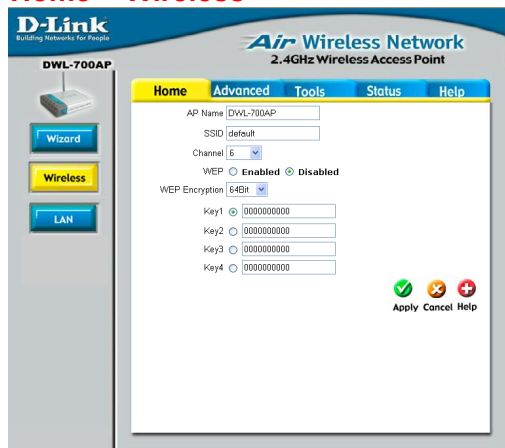


Fig. 5.3

Using the Configuration Menu (continued)

AP Name: You may choose to rename your Access Point, especially if you have more than one Access Point on your network.

SSID: (Service Set Identifier) “default” is the default setting. The SSID is a unique name that identifies a network. All devices on a network must share the same SSID name in order to communicate on the network. If you choose to change the SSID from the default setting, input your new SSID name in this field. The SSID can be up to 32 characters in length.

Channel: Channel 6 is the default channel. Input a new number if you want to change the default setting. All devices on the network must be set to the same channel to communicate on the network.

WEP Encryption: Select **Enable Encryption** to use **WEP (Wired Equivalent Privacy)** on the network. All devices on the network, and the Access Point, must share the same WEP selection – either **Enable** or **Disable**, and they must share the same WEP key. The WEP key is generated from **ASCII** or **Hexadecimal** entries that are either 64, 128, or 256 bit in length. When enabling encryption, select the **Key Type** (ASCII or Hexadecimal) and then input the appropriate digits or letters. You can create up to 4 keys. Select the key you wish to use.

Hexadecimal digits consist of the numbers 0-9 and the letters A-F
ASCII (American Standard Code for Information Interchange) is a code for representing English letters as numbers from 0-127

Click **Help** at any time for more information.
Click **Apply** if you have made any changes or additions.

This window displays the default settings of the DWL-700AP. The default IP Address is 192.168.0.50. If you select **Dynamic IP Address**, you

Fig. 5.4



will obtain a dynamic IP Address from a DHCP server on your network. (This is not advisable since it will be difficult to determine the dynamic IP address assigned to the DWL-700AP.) The **Subnet Mask** is 255.255.255.0. Input the IP Address of the **Gateway** (the router on your network.)

Click **Apply** if you have made any changes.