

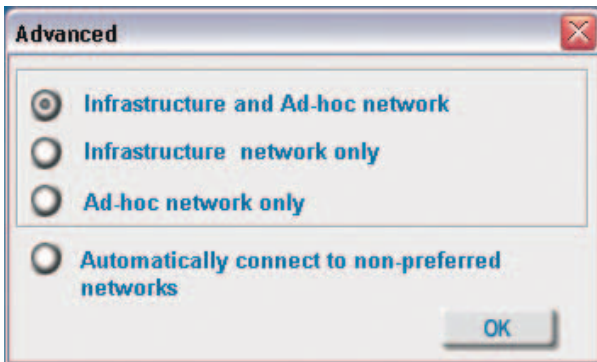
Using the Configuration Utility (continued)

Site Survey > Add

In this window you can select the type of network connection.

Click **OK** to save the changes.

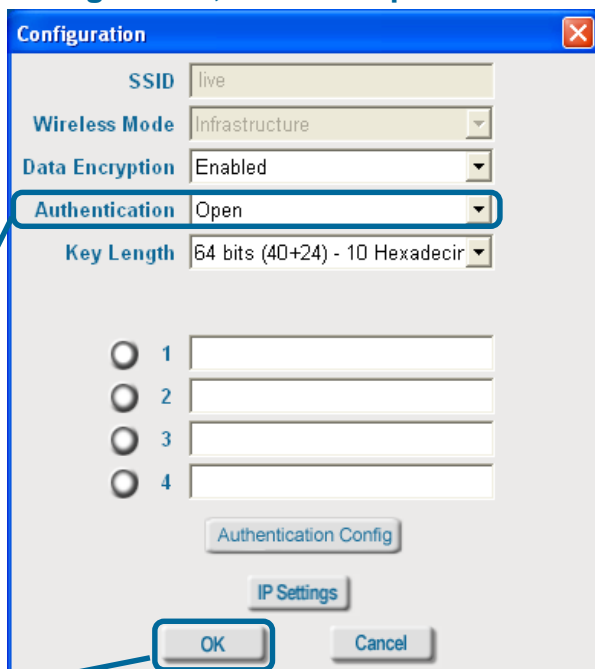
Advanced



If you clicked on **Add**, you can configure, in this window, all the properties of a profile that you wish to add to the network.

If you clicked on **Configuration** or **Properties** you can configure, in this window, all the properties of a profile that already exists in the network.

Configuration, Add or Properties



If you select **WPA** in the *Authentication* field, please see detailed instructions for configuring WPA on the following pages.

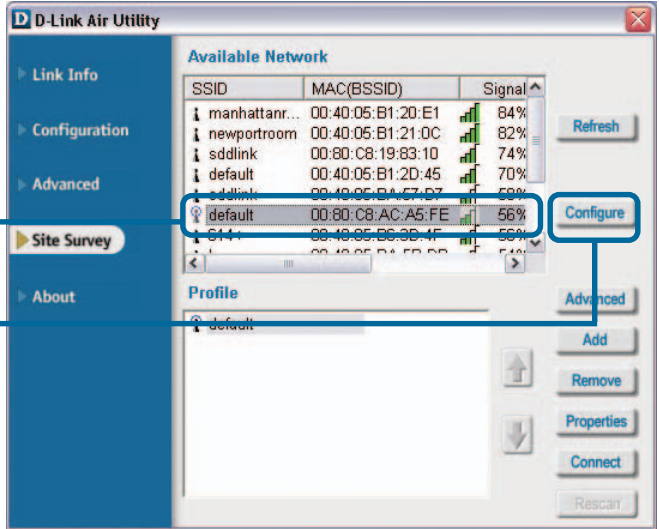
Click **OK** to save the changes.

Using the Configuration Utility (continued)

Authentication > WPA

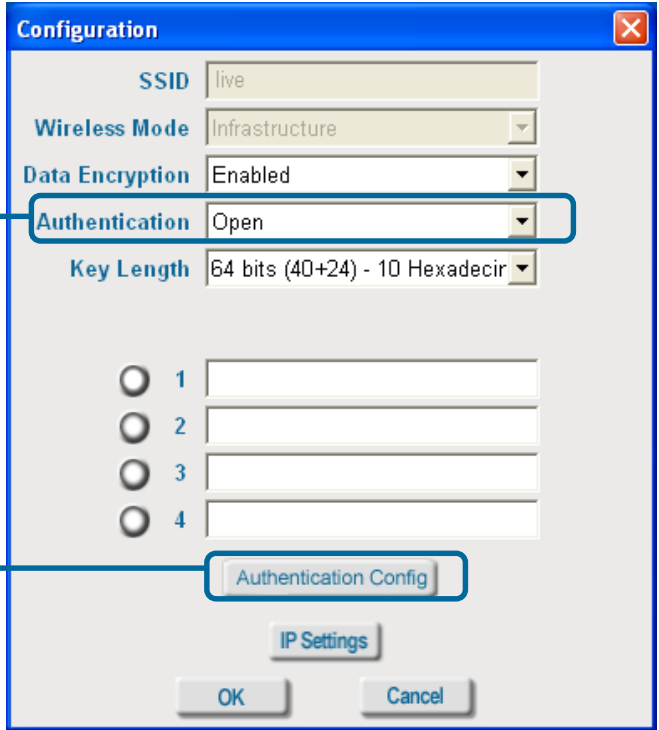
Select the available network to which you want to connect.

Click **Configure**.



Select **WPA** in the *Authentication* field.

Click **Authentication Config**



After you click **Authentication Config**, the *Advanced Security Settings* screen will appear. Complete the *Advanced Security Settings* configuration. Please see pages 17-20 of this manual to find out more about the *Advanced Security Settings*.

Using the Configuration Utility (continued)

Authentication > WPA-PSK

Select the available network to which you want to connect.

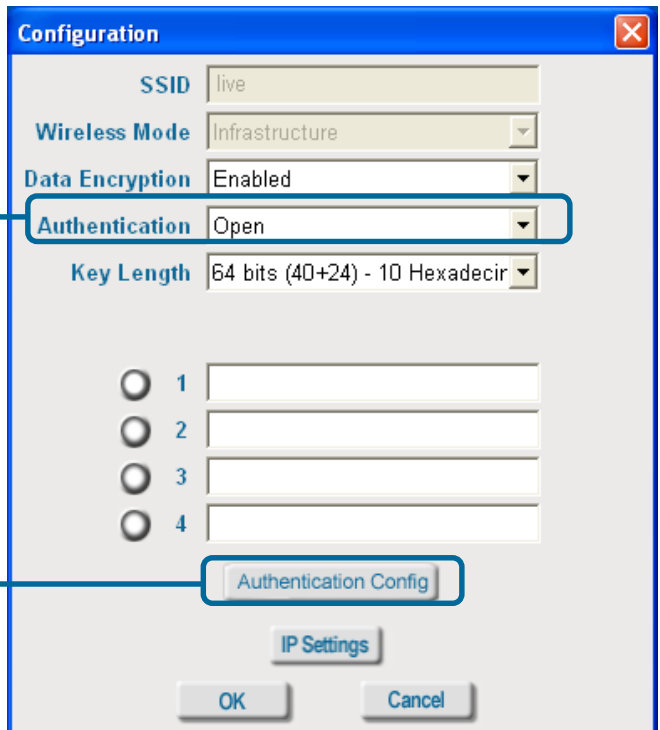
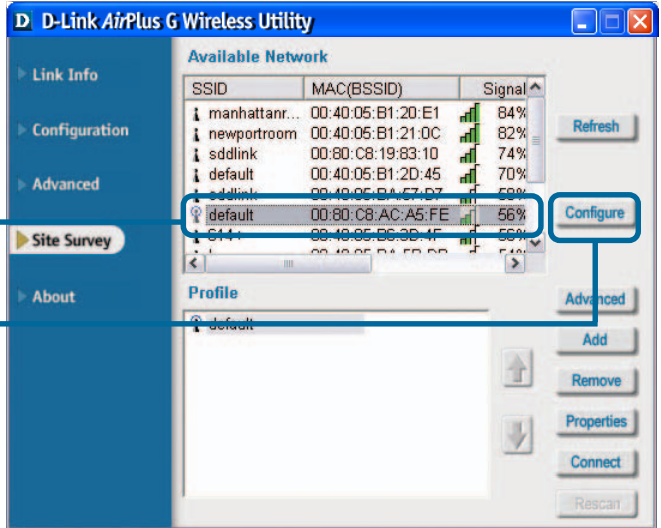
Click **Configure**.



WPA-PSK does not require a RADIUS Server in the network.

Select **WPA-PSK** in the *Authentication* field.

Click **Authentication Config**

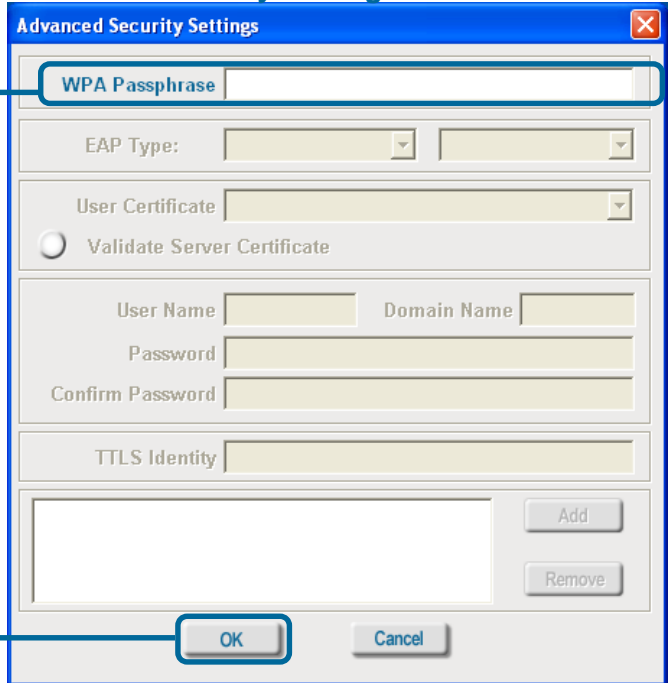


Using the Configuration Utility (continued)

Authentication > WPA-PSK (continued)

Advanced Security Settings

Enter the **WPA Passphrase**.



The 'Advanced Security Settings' dialog box contains the following fields and controls:

- WPA Passphrase:** A text input field with a blue border, highlighted by a callout box.
- EAP Type:** Two dropdown menus.
- User Certificate:** A dropdown menu.
- Validate Server Certificate:** A radio button.
- User Name:** A text input field.
- Domain Name:** A text input field.
- Password:** A text input field.
- Confirm Password:** A text input field.
- TTLS Identity:** A text input field.
- Buttons:** 'Add', 'Remove', 'OK', and 'Cancel' buttons.

Click **OK**.
The configuration is done.

About

The **About** screen gives you the MAC address, Utility Version and the Driver Version of the DWL-G120.



The 'About' screen displays the following information:

- D-Link AirPlus G** logo and branding.
- 802.11g/2.4GHz Wireless Adapter
- Copyright 2003 D-Link AirPlus Configuration Utility
- Adapter Information:**
 - MAC Address: 00:0D:88:6A:86:CD
 - Utility Version: V3.2.0.40205
 - Driver Version: 1.00.08
- [secured by Odyssey]

Using the Configuration Utility with Macintosh OS

After you have completed the installation of the DWL-G120 into your Macintosh computer (please refer to the **Quick Installation Guide** included with the product), follow the steps below to access the configuration settings.

From the **Apple** pull-down menu select **System Preferences**.



Double-click on the **Wireless Adaptor** icon.

Using the Configuration Utility with Macintosh OS (continued)

This window will appear displaying the following:

Current Wireless Network settings: *Network Name; Network Type; Link Status; Channel; and Signal Strength.*

Available Wireless Networks including: *Name; Type; Signal; Channel; Privacy.*

Start Scan: Click **Start Scan** to rescan for an available wireless network at your current location.

Connect: Highlight a network profile and click **Connect** to connect to that network profile.

Wireless Adaptor Settings:

Radio On: Select or deselect

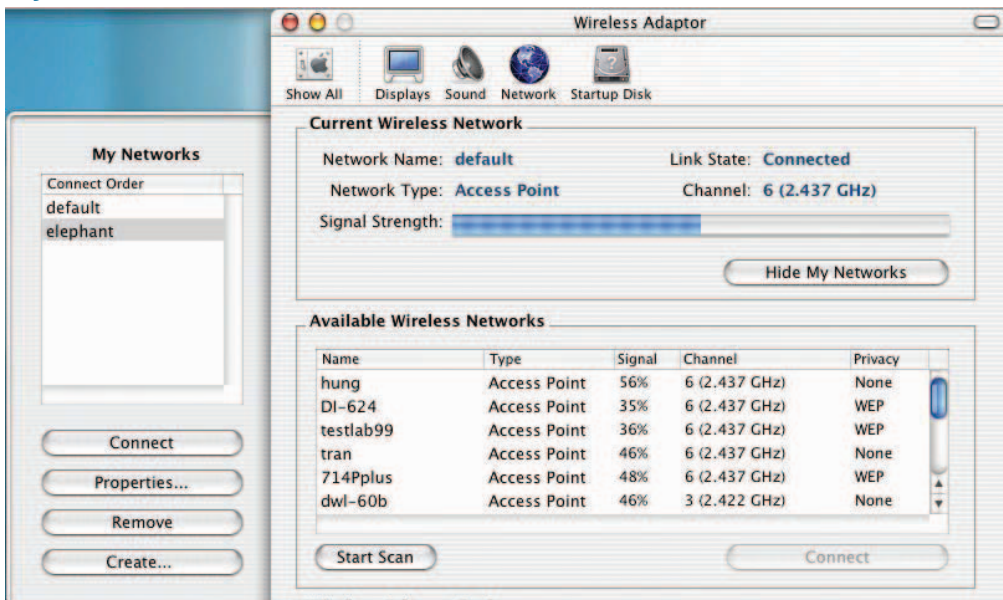
Frequency Band: Displays the frequency band; default is 2.4GHz (may not be changeable).



Click **Show My Networks** to manage your network profiles.

Using the Configuration Utility with Macintosh OS (continued)

My Networks



Connect: Highlight a network profile and click **Connect** to connect to that network profile.

Properties: Highlight a network profile and click **Properties** to configure that network profile. (See screens on the next page.)

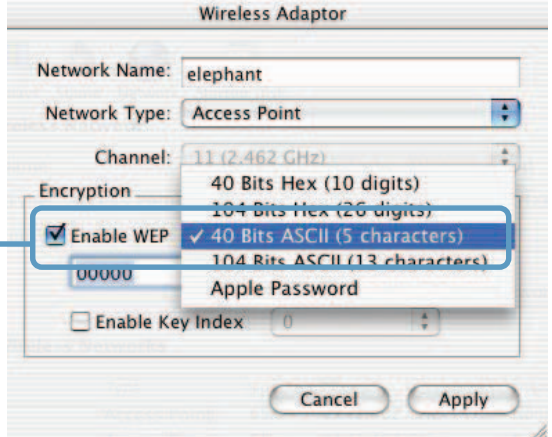
Remove: Highlight a network profile and click **Remove** to remove that network from the profile list.

Create: Click **Create** to create a new network profile, manually. (See screens on the next page.)

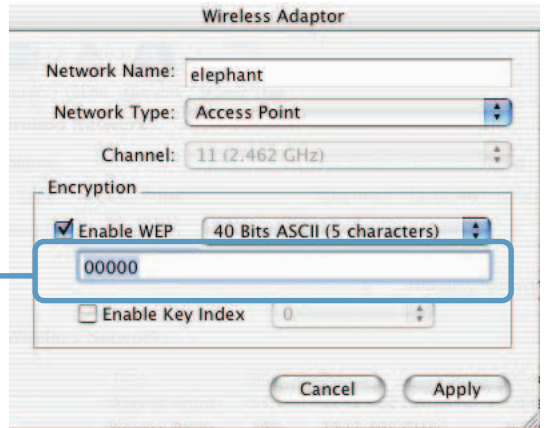
Using the Configuration Utility with Macintosh OS (continued)

My Networks > Create and/or Properties

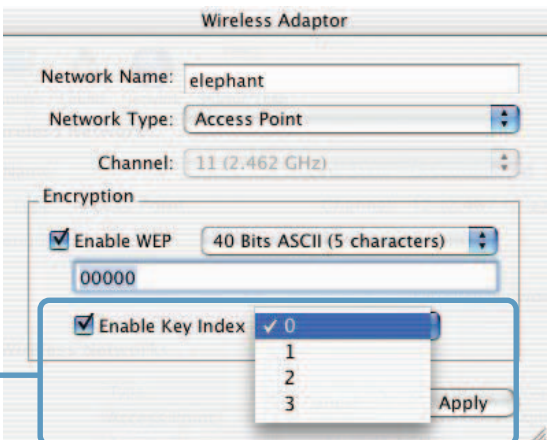
Select the level of WEP encryption. In the example, 40 Bits ASCII was chosen.



Enter the WEP string, in this case 5 ASCII characters have been entered.



Select the key that you wish to use. You can input up to four keys.



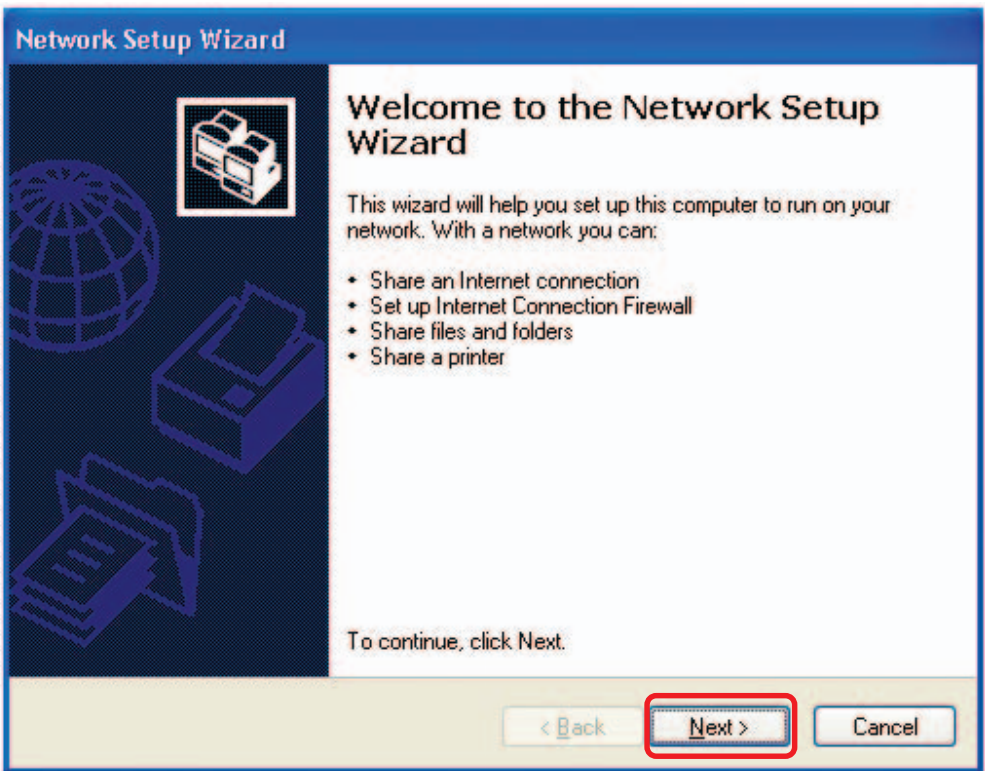
Networking Basics

Using the Network Setup Wizard in Windows XP

In this section you will learn how to establish a network at home or work, using **Microsoft Windows XP**.

Note: Please refer to websites such as <http://www.homenethelp.com> and <http://www.microsoft.com/windows2000> for information about networking computers using Windows 2000/Me/98SE.

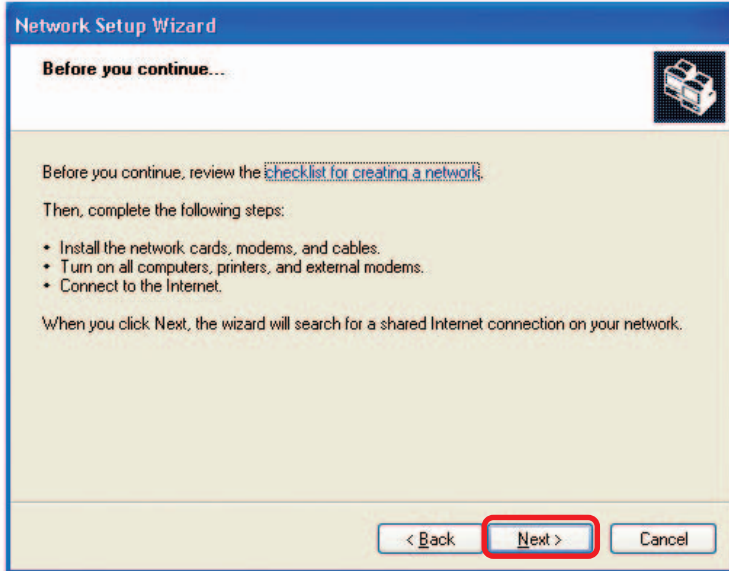
Go to **Start>Control Panel>Network Connections**
Select **Set up a home or small office network**



When this screen appears, click **Next**.

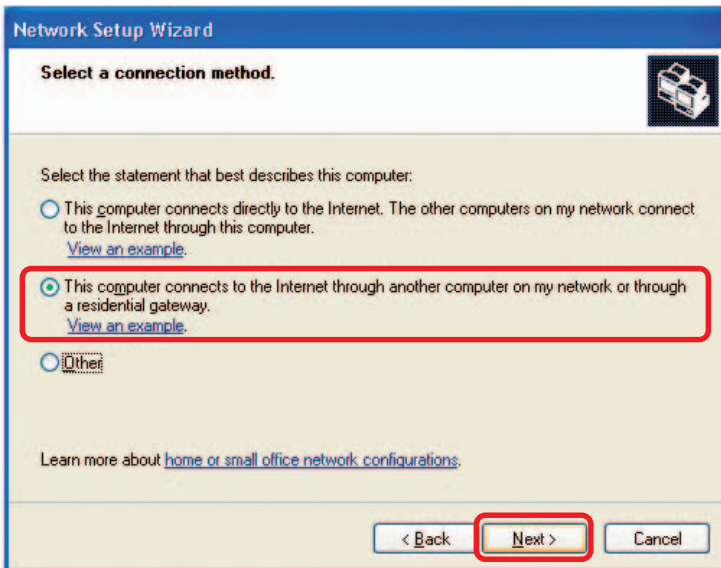
Networking Basics (continued)

Please follow all the instructions in this window:



Click **Next**.

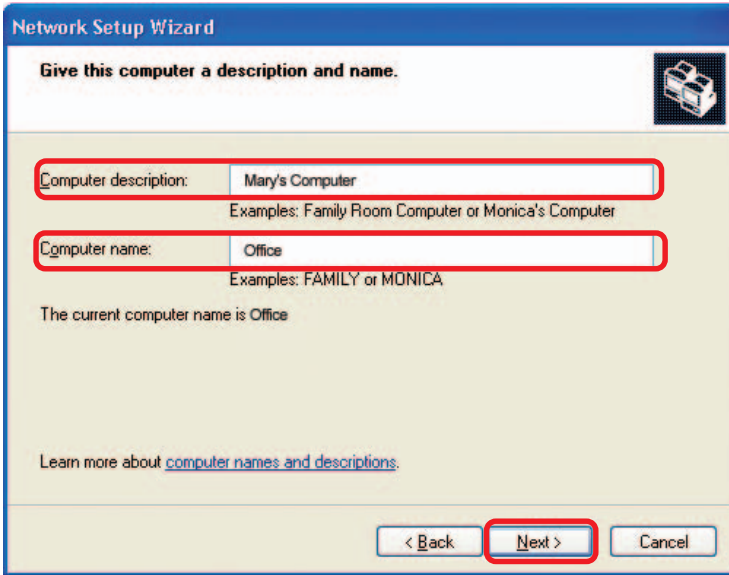
In the following window, select the best description of your computer. If your computer connects to the Internet through a router, select the second option as shown.



Click **Next**.

Networking Basics (continued)

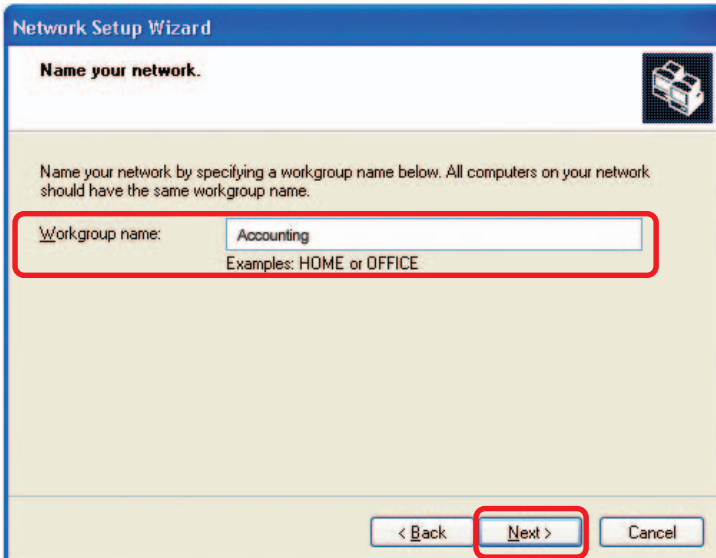
Enter a **Computer description** and a **Computer name** (optional.)



The screenshot shows the 'Network Setup Wizard' dialog box. The title bar reads 'Network Setup Wizard'. The main heading is 'Give this computer a description and name.' Below this, there are two text input fields. The first is labeled 'Computer description:' and contains the text 'Mary's Computer'. Below it, there are examples: 'Examples: Family Room Computer or Monica's Computer'. The second field is labeled 'Computer name:' and contains the text 'Office'. Below it, there are examples: 'Examples: FAMILY or MONICA'. A line of text below the fields states 'The current computer name is Office'. At the bottom left, there is a link: 'Learn more about [computer names and descriptions](#).' At the bottom right, there are three buttons: '< Back', 'Next >', and 'Cancel'. The 'Next >' button is highlighted with a red rectangle.

Click **Next**.

Enter a **Workgroup** name. All computers on your network should have the same **Workgroup name**.

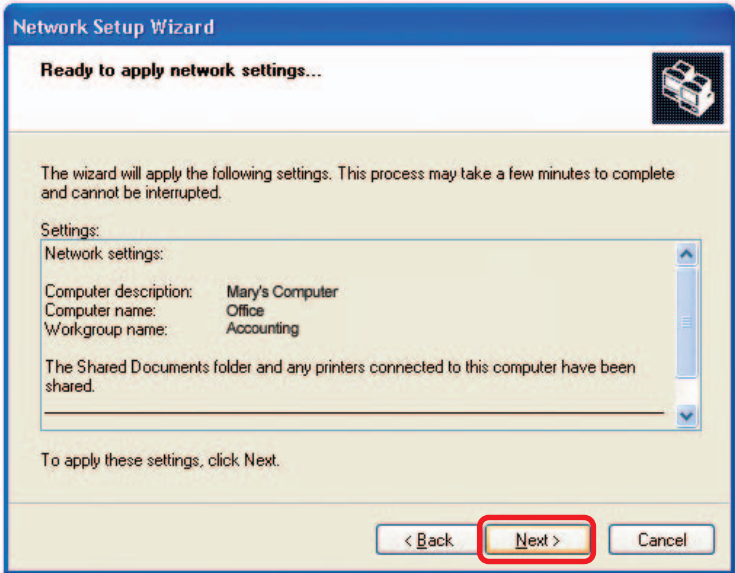


The screenshot shows the 'Network Setup Wizard' dialog box. The title bar reads 'Network Setup Wizard'. The main heading is 'Name your network.' Below this, there is a text input field labeled 'Workgroup name:' containing the text 'Accounting'. Below the field, there are examples: 'Examples: HOME or OFFICE'. At the bottom right, there are three buttons: '< Back', 'Next >', and 'Cancel'. The 'Next >' button is highlighted with a red rectangle.

Click **Next**.

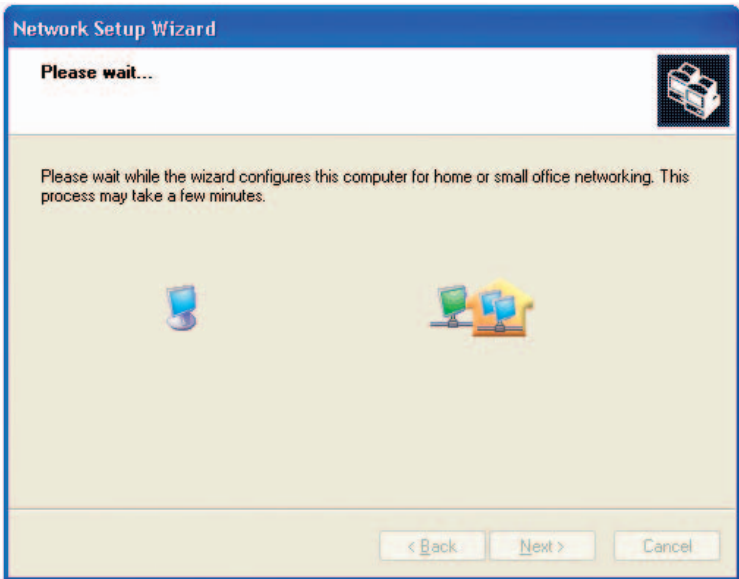
Networking Basics (continued)

Please wait while the **Network Setup Wizard** applies the changes.



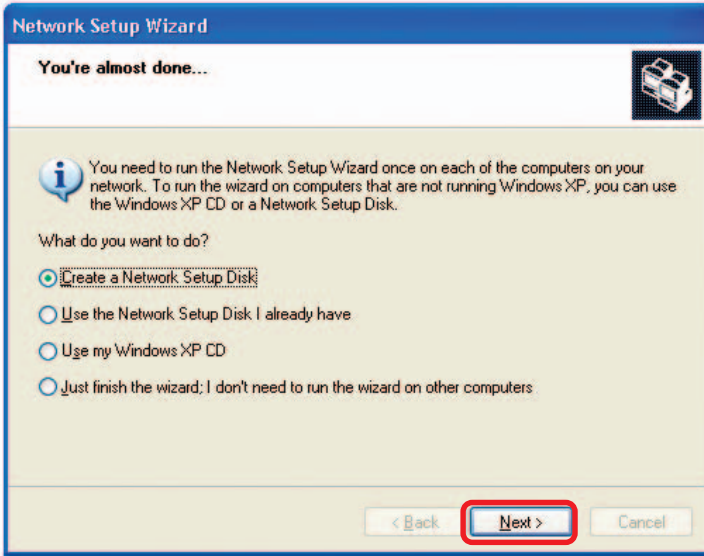
When the changes are complete, click **Next**.

Please wait while the **Network Setup Wizard** configures the computer. This may take a few minutes.



Networking Basics (continued)

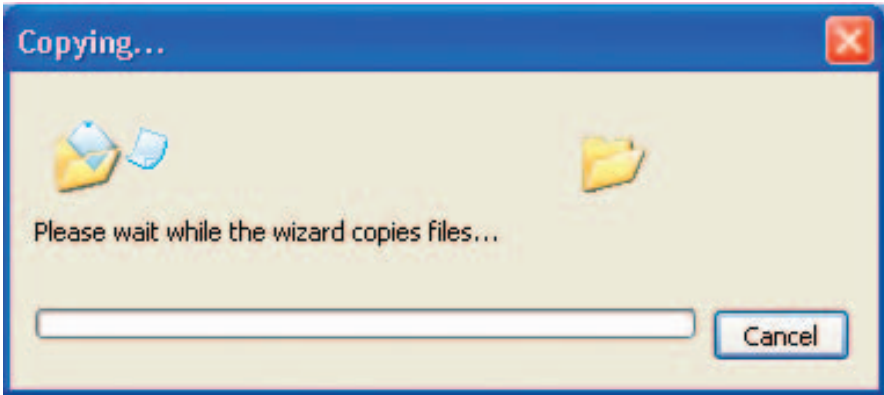
In the window below, select the option that fits your needs. In this example, **Create a Network Setup Disk** has been selected. You will run this disk on each of the computers on your network. Click **Next**.



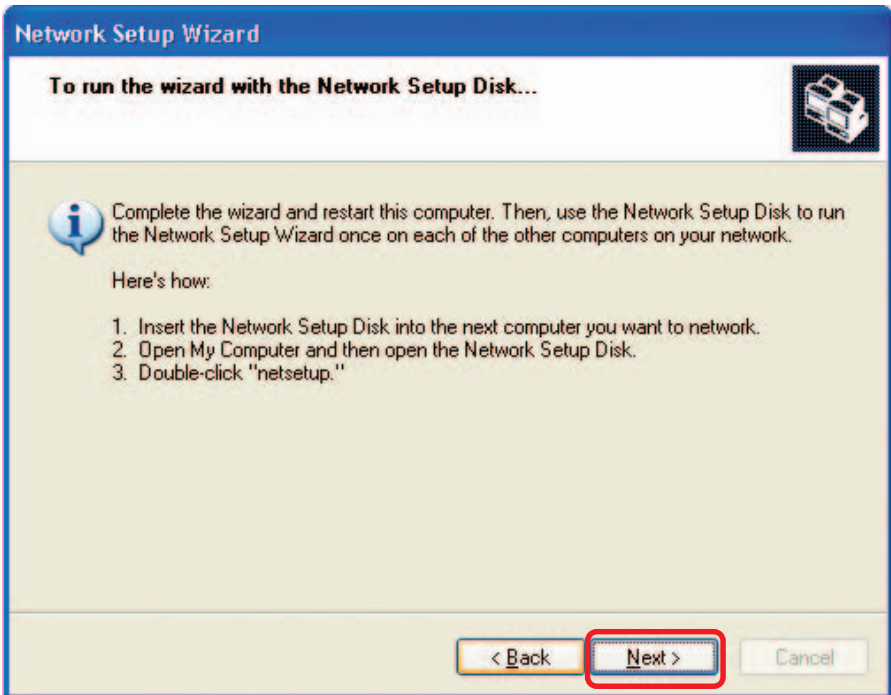
Insert a disk into the Floppy Disk Drive, in this case drive **A**.



Networking Basics (continued)



Please read the information under **Here's how** in the screen below. After you complete the **Network Setup Wizard** you will use the **Network Setup Disk** to run the **Network Setup Wizard** once on each of the computers on your network. To continue click **Next**.

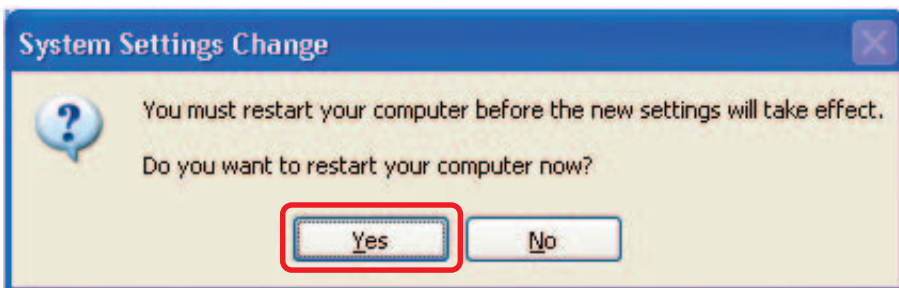


Networking Basics (continued)

Please read the information on this screen, then click **Finish** to complete the **Network Setup Wizard**.



The new settings will take effect when you restart the computer. Click **Yes** to restart the computer.



You have completed configuring this computer. Next, you will need to run the **Network Setup Disk** on all the other computers on your network. After running the **Network Setup Disk** on all your computers, your new wireless network will be ready to use.