

D-Link[®] Quick Installation Guide

This product works with the following operating system software: **Windows XP, Windows 2000**

DWL-G122
AirPlus™ G 802.11g/2.4GHz
Wireless USB Adapter



Before You Begin

You must have at least the following:

- A computer with an available USB port
- At least a 500MHz processor and 64MB of memory
- An 802.11g or 802.11b Access Point (for Infrastructure Mode) or another 802.11g or 802.11b wireless adapter (for Ad-Hoc; Peer-to-Peer networking mode.)
- Properly installed and working USB controller

Check Your Package Contents

These are the items included with your DWL-G122 purchase:



DWL-G122 Wireless G USB Adapter



CD-ROM (containing Drivers, Manual and Warranty)

If any of the above items are missing, please contact your reseller.

1

Installing the Drivers

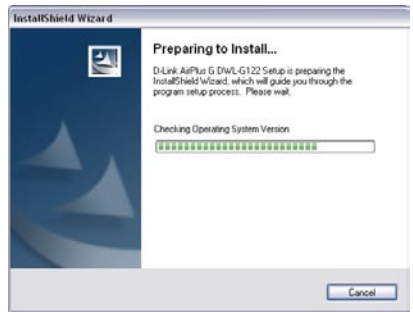
Turn on the computer and insert the **D-Link AirPlus™ G DWL-G122 Driver CD** in the CD-ROM drive.

The step-by-step instructions that follow are shown in **Windows XP**. The steps and screens are similar for the other Windows operating systems.

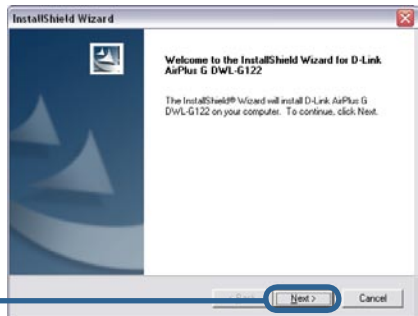
 Do **NOT** install the DWL-G122 Wireless USB Adapter into your computer before installing the driver software from the D-Link CD!

If the CD Autorun function does not automatically start on your computer, type "D:\Drivers\setup.exe." If it does start, proceed to the next screen.

Click **Add A PC**



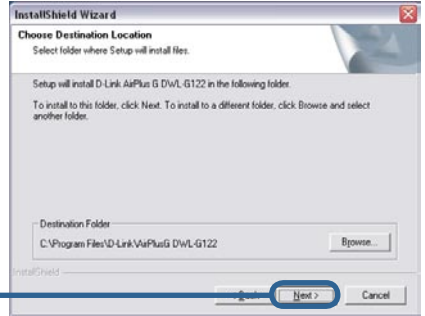
Click **Next**



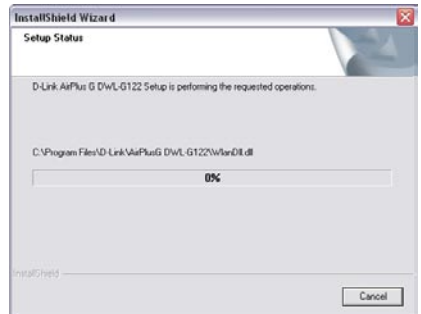
1

Installing the Drivers (continued)

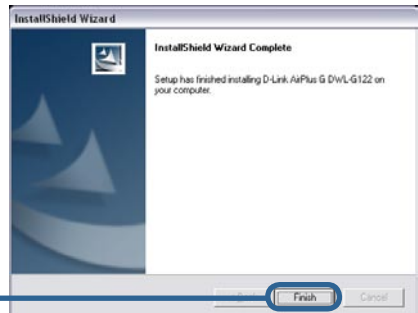
Click Next



Click Next



Click Next



Please shutdown your computer at this time!

2

Connecting the DWL-G122 Adapter to Your Computer

Connect the DWL-G122 Adapter before starting up your computer.



USB Port

Used to connect the DWL-G122 to your computer.

Link/Power LED

Link - Indicates that the DWL-G122 is properly installed.

Activity - Blinks when data is being transmitted through the wireless connection.

Remove the protective covering from the DWL-G122.



A. Begin by pressing down on the cover with your thumb.



B. Pull the cover away from the DWL-G122.

C. Insert the DWL-G122 into an available USB port on your computer, and start up your computer.

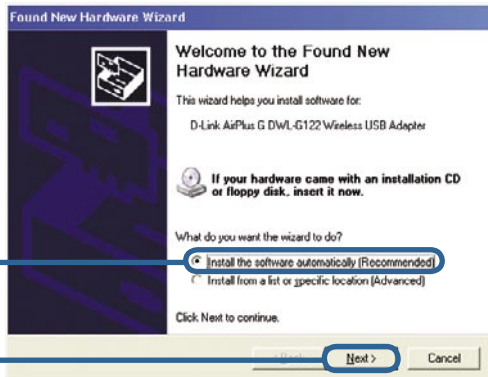
Optional: If desired or necessary, attach the USB extension cable between the DWL-G122 and your computer.



3

The Found New Hardware Wizard

After connecting the DWL-G122, the **Found New Hardware Wizard (Windows XP)** screen will appear:



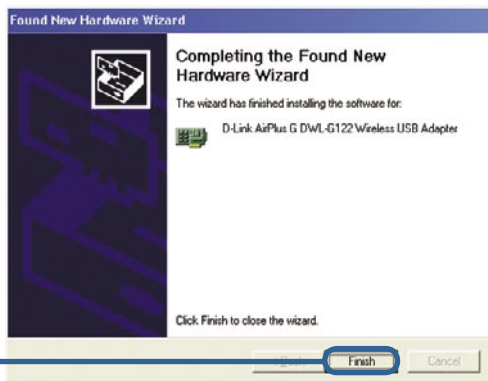
Select **Install the software automatically (Recommended)**

Click **Next**



! For Windows XP/2000: The **Digital Signature Not Found** screen may appear during the installation.

Click **Continue Anyway**



Click **Finish** to complete the installation.

If prompted, restart your computer.

4

Your Installation is Complete!

After completing the Found New Hardware Wizard, the D-Link AirPlus™ G **Configuration Utility** will automatically start and the utility icon will appear in the bottom right hand corner of the desktop screen (systray). **If this icon appears GREEN, then you have successfully installed the DWL-G122, are connected to a wireless network and are ready to communicate!**

If the utility icon does not appear, **double-click** the **shortcut icon** that has appeared on your desktop.



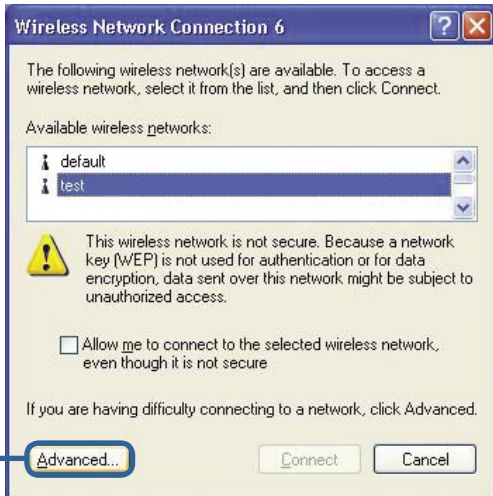
Double-click the **utility icon** to use the configuration utility.



Appendix A - Using the AirPlus™ G Utility in Windows XP

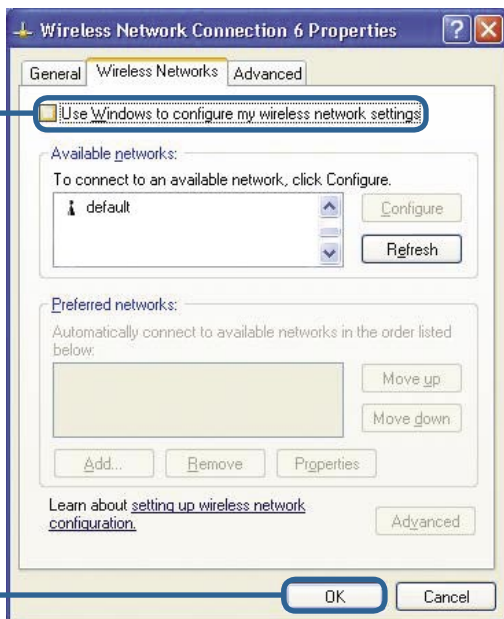
For Windows XP, if you wish to use the AirPlus™ G utility, please do the following steps.

Click the **XP Networking icon** to use the Zero Configuration Wireless Settings.



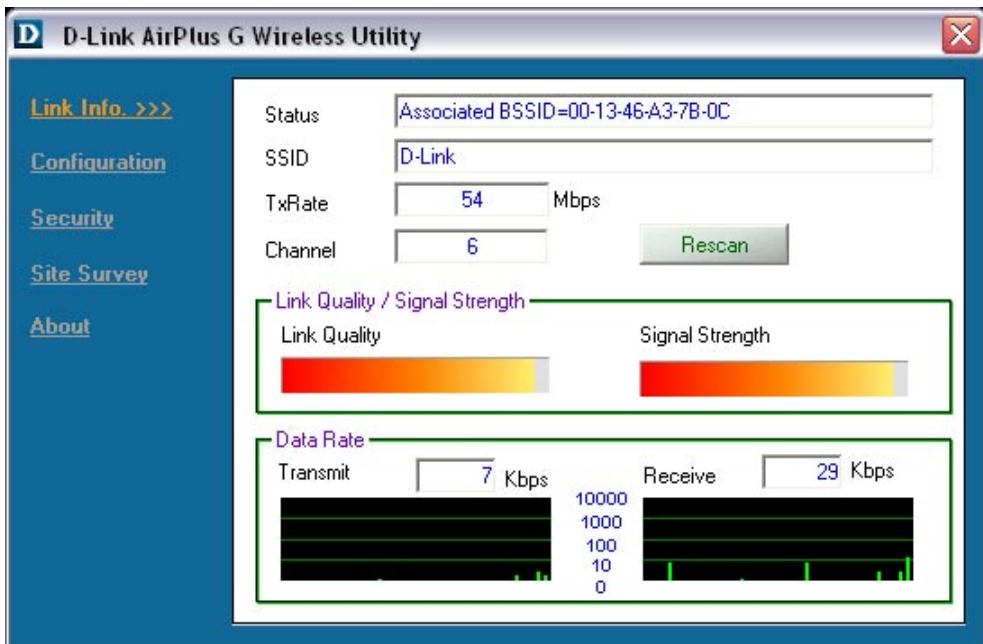
Click **Advanced**

Uncheck **Use Windows to configure my wireless network settings**



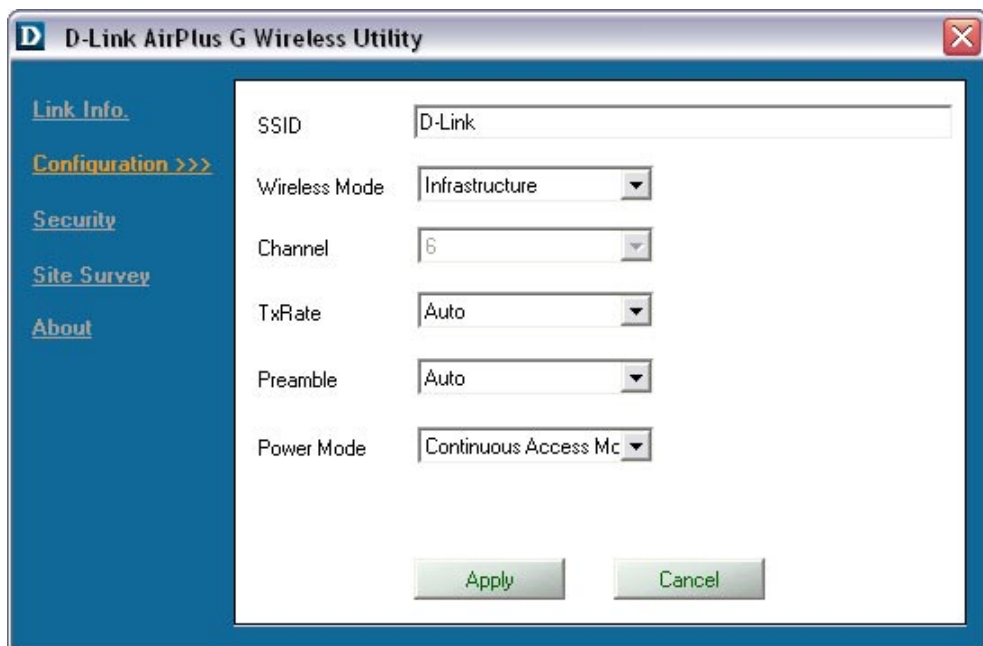
Click **OK**

Appendix B - Using the AirPlus™ G Utility



- **Status:** Displays the MAC Address of the Access Point that is associated with the DWL-G122.
- **SSID:** Displays the Service Set Identifier assigned to the wireless network.
- **Frequency:** Displays the current frequency used by the adapter.
- **Wireless Mode:** Displays the wireless mode. The default is Infrastructure.
- **TxRate:** Displays the current data transmission rate.
- **Channel:** Displays the channel information. By default, the channel is set to 6 and selection is automatically determined by the DWL-G122.
- **Signal Strength:** Represents the wireless signal strength between the access point and the DWL-G122.
- **Link Quality:** Displays the integrity of the wireless connection between the DWL-G122 and the Access Point.

Appendix B - Using the AirPlus™ G Utility (continued)



The screenshot shows the 'D-Link AirPlus G Wireless Utility' window. On the left is a blue sidebar with navigation links: 'Link Info.', 'Configuration >>>' (highlighted in orange), 'Security', 'Site Survey', and 'About'. The main area contains configuration options for wireless settings:

SSID	D-Link
Wireless Mode	Infrastructure
Channel	6
TxRate	Auto
Preamble	Auto
Power Mode	Continuous Access Mc

At the bottom of the configuration area are two buttons: 'Apply' and 'Cancel'.

- **SSID:** The Service Set Identifier is the name assigned to the wireless network. The factory SSID setting is set to **default**. Make changes here to match the SSID on existing Wireless Router or Access Point.
- **Wireless Mode:** The factory setting is set to **Infrastructure**. Ad-Hoc mode is used for peer-to-peer networking.
- **Channel:** The default setting is set at **6**.
- **TxRate:** The default setting is set to **Auto**.
- **Preamble:** The default setting is set to **Auto**.
- **Power Mode:** The default setting is set to **Continuous Access Mode**.

Appendix C - IP Address Configuration

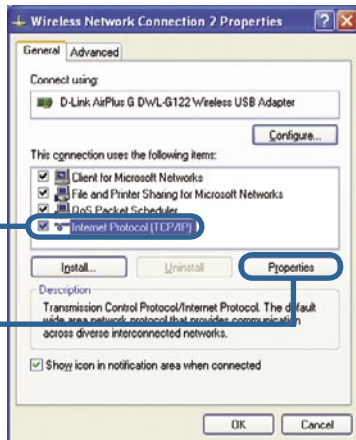
To connect to a network, make sure the proper network settings are configured for the DWL-G122.

For Microsoft Windows XP:

Go to **Start > right click on My Network Places > select Properties > Double-click on the Network Connection** associated with the DWL-G122.

Click **Internet Protocol (TCP/IP)**

Click **Properties**



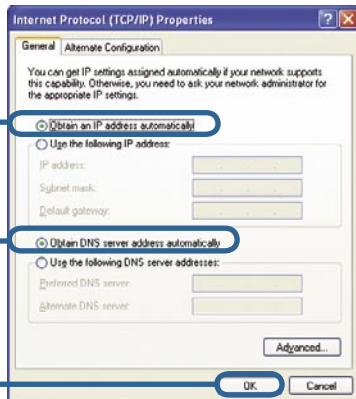
Dynamic IP address setup

Used when a **DHCP server** is available on the local network. (i.e. Router)

Select **Obtain an IP address automatically** (if the Wireless Router or Access Point has DHCP server enabled)

Select **Obtain DNS server address automatically**

Click **OK**



Static IP address setup

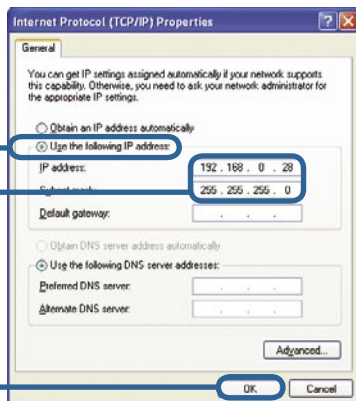
Used when a **DHCP server** is not available on the local network.

Select **Use the following IP address**

IP address: **192.168.0.28**
Subnet mask: **255.255.255.0**

Input a static IP address in the same range as the Wireless Router or Access Point.

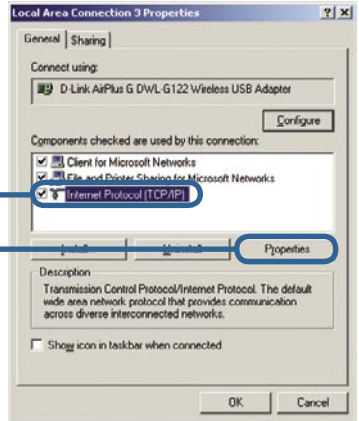
Click **OK**



Appendix C - IP Address Configuration

For Windows 2000 users:

Go to **Start > Settings > Network and Dial-up Connections** > Double-click on the **Local Area Connection** associated with the DWL-G122 > select **Properties**



Click **Internet Protocol (TCP/IP)**

Click **Properties**

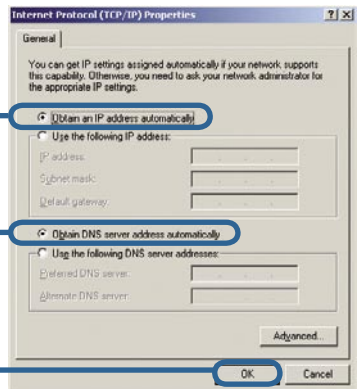
Dynamic IP address setup

Used when a **DHCP server** is available on the local network. (i.e. Router)

Select **Obtain an IP address automatically** (if the Wireless Router or Access Point has DHCP server enabled)

Select **Obtain DNS server address automatically**

Click **OK**



Static IP address setup

Used when a **DHCP server** is not available on the local network.

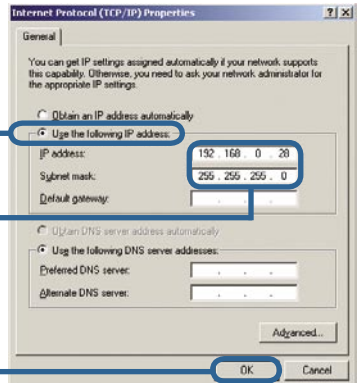
Select **Use the following IP address**

IP address: **192.168.0.28**

Subnet mask: **255.255.255.0**

Input a static IP address in the same range as the Wireless Router or Access Point.

Click **OK**



Technical Support

You can find software updates and user documentation on the D-Link website.

D-Link provides free technical support for customers within the United States and within Canada for the duration of the warranty period on this product.

U.S. and Canadian customers can contact D-Link technical support through our website, or by phone.

Tech Support for customers within the United States:

D-Link Technical Support over the Telephone:

(877) 453-5465

24 hours a day, seven days a week.

D-Link Technical Support over the Internet:

<http://support.dlink.com>

email:support@dlink.com

Tech Support for customers within Canada:

D-Link Technical Support over the Telephone:

(800) 361-5265

Monday to Friday 7:30am to 9:00pm EST

D-Link Technical Support over the Internet:

<http://support.dlink.ca>

email:support@dlink.ca

D-Link[®]
Building Networks for People