

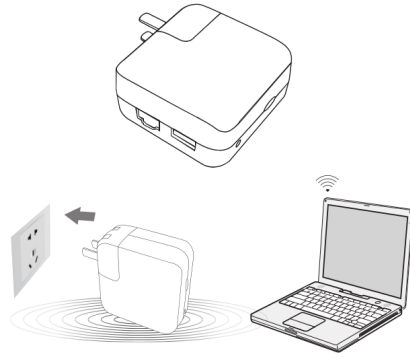
Quick Installation Guide

DIR-503A Mini Wireless Router

- Items:
- DIR-503A Mini Wireless Router
 - Quick Installation Guide
 - Warranty card

Hardware Connection

Mini router into a standard power outlet, check the mini wireless router indicator.



Plug into the power outlet and check LED indicator:

| LED Color | Description |
|-----------|---------------|
| Green | AP mode |
| Red | Route mode |
| Blue | Repeater mode |

If light is on, connect successfully.
 If light flashes, connect in failure, pls connect again.
 If light is off, pls check if connect correctly.
 Press the button to change the mode: Route - Repeater - AP.

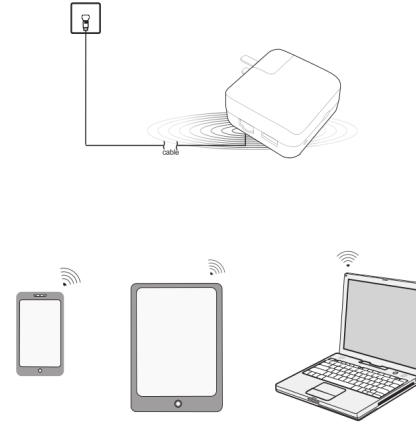
1

Application of four modes

1. AP Mode.

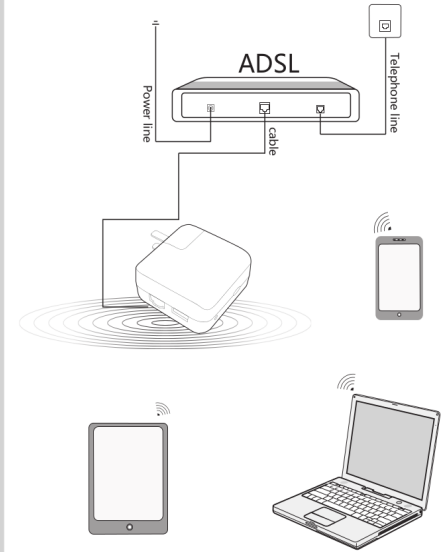
Application Environment: Hotel network, Network cable.

As the following picture, power on and connect the LAN port with network cable, when LED indicator shows green, mini router will work in AP mode. It will transfer signal from cable to wireless signal, then users can access into internet by wireless signal.



2

2. Route Mode.
 Application Environment: Front has a ADSL modem, or area where share an IP account.
 As the following picture, power on and connect the WAN port with network cable, when LED indicator shows red, mini router will work in route mode.
 It not only transfers signal from cable to wireless signal, also share an same PPPoE/IP account to access into the internet with other users.



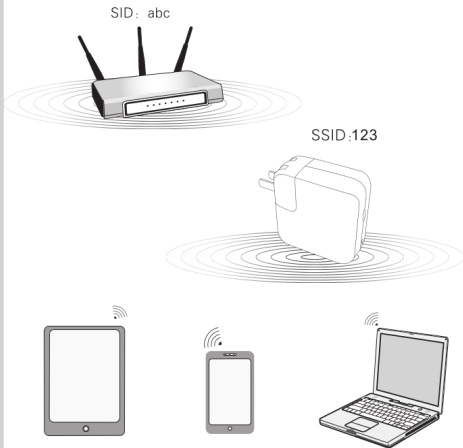
3

3. Repeater Mode.

Application Environment: used to expand wireless signal coverage of AP and wireless router in duplex buildings and a large area.

As the following picture, power on and connect the LAN port with network cable, when LED indicator shows blue, mini router will work in repeater mode.

Connect mini router with users by cable or wireless, mini router expands wireless signal of upper router, then users get wireless signal of upper router to access into internet, but users need to set IP address and DNS address as per requirement of upper router.



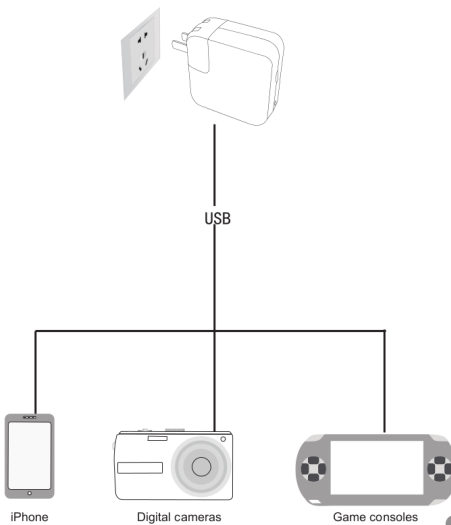
4

4. USB Charging

Application Environment: Any device need to be charged anywhere.

As the following picture, plug device into power outlet, when light is on, any device can be charged via USB interface.

Remark: This function only for the device with USB standard power(5V/0.5A).



5

How to set computer IP address

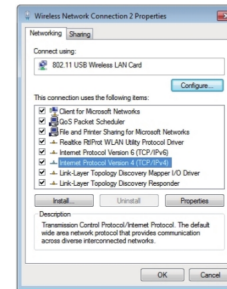
Please set computer IP address before modify the settings of mini router.

1. Wireless network Settings:

a. Click "start -> Control Panel -> Network and Internet -> Network and Sharing Center -> Change adapter settings -> Wireless Network Connection". Right click "Wireless Network Connection", Select "Properties";

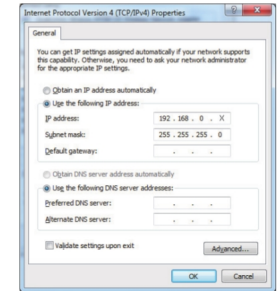


b. Double-click "Internet Protocol Version4 (TCP/IPv4)";



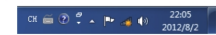
6

c. Set computer IP address: 192.168.0.x (x can be 100 to 200 any integer), subnet mask is: 255.255.255.0. After setting, click "OK" to return to last Interface, and click "OK" to save settings;

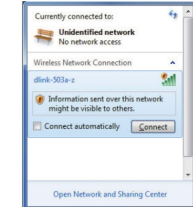


2. Wireless network connection

a. After installed Network Card, an icon shows at the bottom-right corner of the screen, click this icon:



b. In the pop-up list, select the wireless network to connect. Click "Connect" button;



7

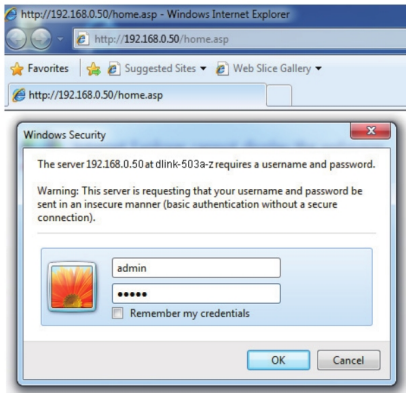
c. When internet shows "Connected", the user connected network successfully.



Note: Mini router defaulted non-encryption for wireless signal, suggest setting encryption before using.

Login management interface

a. Open IE browser, input http://192.168.0.50 and press Enter, landing in the pop-up window to input user name: admin; Password: admin; then click "OK";



b. Enter router configuration homepage, select mode to configure as per actual network applications.

D-Link Wireless Mini Router DIR-503A



AP mode management configuration (LED indicator is green)

①. Click AP mode in homepage to set the SSID and wireless encryption password, then click "Apply";

D-Link Wireless Mini Router DIR-503A



The routing mode management configuration (LED indicator is red)

①. Click Route mode in homepage, take the example of PPPoE access in routing mode, enter into dial-up configuration page and input account number and password provided by your ISP, then click "Next";



②. User can set up a wireless SSID and select WEP, WPA-PSK, WPA2-PSK or WPA/WPA2 etc for encryption on this page, also need to input same password in network card. suggest selecting WPA/WPA2 encryption for network security, then click "Apply";



Repeater mode management configuration (LED indicator is blue)

①. Click Repeater mode in homepage, click scan to searching wireless signal and select proper network and input password, then click "Apply";

D-Link Wireless Mini Router DIR-503A



c. Click "Details" in homepage, and click "Wireless Settings" under "basic" to enter into wireless basic setting to modify the SSID and wireless channel, then click "Apply";



d. Click "Details" in homepage, and click "LAN Settings" under "basic" to enter into wired basic setting to modify the gateway address and DHCP, then click "Apply";



e. Click "Details" in homepage, and click "Status" to enter into status page, you can check status information, such as wired and wireless. connection status;

D-Link Wireless Mini Router DIR-503A



FAQ:

- If forget user name and password, how to do? (how to restore factory default settings)
 - Power on, press the button on the mini router for 8 seconds to restore factory default settings. Note:
 - All configuration information will be lost after reset.
 - Factory defaulted IP: 192.168.0.50; Defaulted mode: Route; Defaulted both account name and password: admin; Defaulted name for wireless network: dlink-503a-z.

2. Why laptop can not search wireless signal?

- Under this case, please check the following:
 - If there is built-in wireless card in laptop, make sure if open the wireless function. (pls contact laptop vendor or view user manual for confirmation);
 - Try to get closer for searching the wireless signal to check if too much obstacles when the signal.
- Check if wireless network card driver has been installed and started successfully. Method: Click "My Computer", select "Properties - Hardware - Device Manager", the green icon of wireless network card indicates network card driver has been installed and started successfully; red click on the icon of wireless network card indicates it is not started; pls right-click this icon to start; Question mark or exclamation mark on the icon of wireless network card indicates it is installed in failure, pls reinstall.