

Schedules

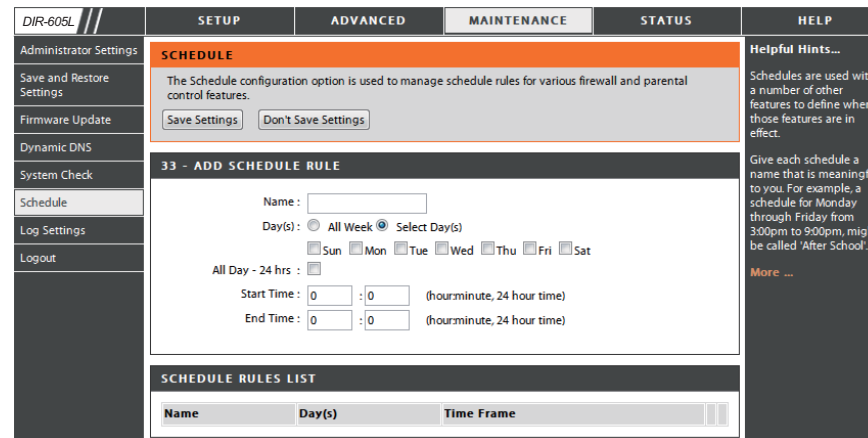
The Router allows the user the ability to manage schedule rules for various firewall and parental control features on this window. Once you have finished configuring the new schedule rule, click the **Save Settings** button at the top of the window.

Name: Enter a name for the new schedule rule.

Day(s): Choose the desired day(s), either All Week or Select Days. If the latter is selected, please use the checkboxes directly below to specify the individual days.

All Day - 24 hrs: Tick this check box if the new schedule rule applies to the full 24-hour period.

Start Time/End Time: If the new schedule rule does not apply to the full 24-hour period, untick the previous checkbox and then enter a specific beginning and ending time.



Log Settings

The system log displays chronological event log data specified by the router user. You may also save a simple text file containing the log to your computer. Click the **Save** button and follow the prompts to save the file.

Save Log File: Click on the **Save** button link on this window to save the log file to your local hard drive.

Syslog Server: click the checkbox to save the log in the log server in the LAN side.

Log Type & Level: Click the checkbox(es) of the type of log information requested: **“System, Firewall & Security, Router Status, Critical, Warning and Information”**

Send by Mail: Enter the your SMTP server name(or IP address) and enter your mail address before sending your system log by mail.

DIR-605L	SETUP	ADVANCED	MAINTENANCE	STATUS	HELP
Administrator Settings	LOG SETTINGS				Helpful Hints... You may want to make the email settings similar to those of your email client program. More...
Save and Restore Settings	Logs can be saved by sending it to an admin email address.				
Firmware Update	<input type="button" value="Save Settings"/> <input type="button" value="Don't Save Settings"/>				
Dynamic DNS	SAVE LOG FILE				
System Check	Save Log File To Local Hard Drive <input type="button" value="Save"/>				
Schedule	SYSLOG SETTINGS				
Log Settings	Enable Logging To Syslog Server: <input type="checkbox"/> Syslog Server IP Address: <input type="text" value="0.0.0.0"/> << <input type="text" value="Computer Name"/>				
Logout	LOG TYPE & LEVEL				
	Log Type: <input checked="" type="checkbox"/> System <input checked="" type="checkbox"/> Firewall & Security <input checked="" type="checkbox"/> Router Status Log Level: <input type="checkbox"/> Critical <input type="checkbox"/> Warning <input type="checkbox"/> Information				
	SEND BY MAIL				
	Email Address : <input type="text"/> Email Subject : <input type="text"/> Sender Email Address : <input type="text"/> SMTP Server/IP Address : <input type="text"/> User Name : <input type="text"/> Password : <input type="password"/> Confirm Password : <input type="password"/> <input type="button" value="Send Mail Now"/>				

Device Info

This window displays the current information for the DIR-605L. It will display the LAN, WAN, and Wireless information.

If your WAN connection is set up for a Dynamic IP address then a **DHCP Release** button and a **DHCP Renew** button will be displayed. Use **DHCP Release** to disconnect from your ISP and use **DHCP Renew** to connect to your ISP.

If your WAN connection is set up for PPPoE, a **Connect** button and a **Disconnect** button will be displayed. Use **Disconnect** to drop the PPPoE connection and use **Connect** to establish the PPPoE connection.

LAN: Displays the MAC address and the private (local) IP settings for the router.

WAN: Displays the MAC address and the public IP settings for the router.

Wireless Displays the wireless MAC address and your wireless
802.11N: settings such as SSID, Channel, and Encryption status.

DIR-605L	SETUP	ADVANCED	MAINTENANCE	STATUS	HELP
Device Info	DEVICE INFORMATION				Helpful Hints...
View Log	All of your Internet and network connection details are displayed on this page. The firmware version is also displayed here.				All of your WAN and LAN connection details are displayed here.
Traffic Statistics	Firmware Version :1.03, Fri 25 Mar 2011				More...
Active Sessions	LAN				
Wireless	MAC Address :F07D688285BE IP Address :192.168.0.1 Subnet Mask :255.255.255.0 DHCP Server :Enabled				
Logout	INTERNET				
	MAC Address :F07D688285BF DHCP Client Connected Connection : <input type="button" value="DHCP Renew"/> <input type="button" value="DHCP Release"/> IP Address :172.17.5.7 Subnet Mask :255.255.255.0 Default Gateway :172.17.5.254 DNS :192.168.168.250, 192.168.168.201				
	WIRELESS 802.11N				
	SSID :dlink Channel :11 Encryption :Disabled				

Log

This window allows you to view a log of activities on the Router. This is especially helpful detecting unauthorized network usage.

First Page: View the first page of the log.

Last Page: View the last page of the log.

Previous: View the previous page.

Next: View the next page.

Clear: Clear the log.

Link to Log Settings: Click this button to go directly to the Log Settings window (**Maintenance > Log Settings**).

DIR-605L	SETUP	ADVANCED	MAINTENANCE	STATUS	HELP				
Device Info	VIEW LOG View Log displays the activities occurring on the DIR-501.				Helpful Hints... Check the log frequently to detect unauthorized network usage.				
View Log	VIEW LOG Page 1 of 1				You can also have the log mailed to you periodically. Refer to Maintenance -> Email More...				
Traffic Statistics	First Page Last Page Previous Next Page Clear Link To Log Settings								
Active Sessions	<table border="1"><thead><tr><th>Time and Date</th><th>Message</th></tr></thead><tbody><tr><td>Mar 25 04:31:01</td><td>Log message was cleared.</td></tr></tbody></table>				Time and Date	Message	Mar 25 04:31:01	Log message was cleared.	
Time and Date	Message								
Mar 25 04:31:01	Log message was cleared.								
Wireless	WIRELESS								
Logout									

Traffic Statistics

The window below displays the Traffic Statistics. Here you can view the amount of packets that pass through the DIR-605L on both the WAN and the LAN ports. The traffic counter will reset if the device is rebooted.

DIR-605L	SETUP	ADVANCED	MAINTENANCE	STATUS	HELP											
Device Info	TRAFFIC STATISTICS				Helpful Hints... This is a summary of the number of packets that have passed between the WAN and the LAN since the router was last initialized. More...											
View Log	Traffic Statistics display Receive and Transmit packets passing through your router.															
Traffic Statistics																
Active Sessions																
Wireless	<input type="button" value="Refresh"/> <input type="button" value="Reset"/>															
Logout	<table border="1"> <thead> <tr> <th></th> <th>Received</th> <th>Transmit</th> </tr> </thead> <tbody> <tr> <td>Internet</td> <td>0 Packets</td> <td>0 Packets</td> </tr> <tr> <td>LAN</td> <td>5 Packets</td> <td>5 Packets</td> </tr> <tr> <td>WIRELESS 11n</td> <td>0 Packets</td> <td>0 Packets</td> </tr> </tbody> </table>						Received	Transmit	Internet	0 Packets	0 Packets	LAN	5 Packets	5 Packets	WIRELESS 11n	0 Packets
	Received	Transmit														
Internet	0 Packets	0 Packets														
LAN	5 Packets	5 Packets														
WIRELESS 11n	0 Packets	0 Packets														

Active Session

The NAPT Active Session table displays a list of all active conversations between WAN computers and LAN computers.

DIR-605L	SETUP	ADVANCED	MAINTENANCE	STATUS	HELP								
Device Info	ACTIVE SESSIONS				Helpful Hints... This is a list of all active conversations between WAN computers and LAN computers. More...								
View Log	This page displays the full details of active internet sessions to your router.												
Traffic Statistics	<input type="button" value="Refresh"/>												
Active Sessions													
Wireless	NAPT SESSION TCP Session: 11 UDP Session: 1 Total: 12												
Logout	NAPT SESSION <table border="1"> <thead> <tr> <th>IP Address</th> <th>TCP Session</th> <th>UDP Session</th> </tr> </thead> <tbody> <tr> <td>192.168.0.100</td> <td>11</td> <td>0</td> </tr> <tr> <td>192.168.0.1</td> <td>0</td> <td>1</td> </tr> </tbody> </table>					IP Address	TCP Session	UDP Session	192.168.0.100	11	0	192.168.0.1	0
IP Address	TCP Session	UDP Session											
192.168.0.100	11	0											
192.168.0.1	0	1											

Wireless

The wireless client table displays a list of current connected wireless clients. This table also displays the connection time and MAC address of the connected wireless client.

DIR-605L //	SETUP	ADVANCED	MAINTENANCE	STATUS	HELP
Device Info	WIRELESS				Helpful Hints...
View Log	Use this option to view the wireless clients that are connected to your wireless router.				This is a list of all wireless clients that are currently connected to your wireless router.
Traffic Statistics	NUMBER OF WIRELESS CLIENTS : 0				More...
Active Sessions					
Wireless	MAC Address IP Address Mode Rate Signal (%)				
Logout					

Help

Click the desired hyperlink to get more information about how to use the Router.

The screenshot displays the web interface for a D-Link DIR-605L router. At the top, there is a navigation bar with tabs for 'DIR-605L', 'SETUP', 'ADVANCED', 'MAINTENANCE', 'STATUS', and 'HELP'. The 'HELP' tab is currently selected. On the left side, there is a vertical menu with 'Menu' and 'Logout' options. The main content area is titled 'HELP MENU' and is divided into four sections: 'Setup', 'Advanced', 'Maintenance', and 'Status'. Each section contains a list of hyperlinks for further assistance.

DIR-605L	SETUP	ADVANCED	MAINTENANCE	STATUS	HELP
Menu	HELP MENU				Helpful Hints...
Logout	Setup				
	<ul style="list-style-type: none">• Internet Setup• Wireless Setup• Lan Setup• Time and Date• Parental Control				
	Advanced				
	<ul style="list-style-type: none">• Port Forwarding• Application Rules• Access Control• Traffic Control• Firewall & DMZ• Advanced Wireless• Advanced Network• Routing				
	Maintenance				
	<ul style="list-style-type: none">• Device Administration• Save and Restore• Firmware Update• DDNS Setting• System Check• Schedules• Log Setting				
	Status				
	<ul style="list-style-type: none">• Device Info• View Log• Traffic Statistics• Active Sessions• Wireless				

Wireless Security

This section will show you the different levels of security you can use to protect your data from intruders. The DIR-605L offers the following types of security:

- WPA2 (Wi-Fi Protected Access 2)
- WPA (Wi-Fi Protected Access)
- WEP (Wired Equivalent Privacy)
- WPA2-PSK (Pre-Shared Key)
- WPA-PSK (Pre-Shared Key)

What is WEP?

WEP stands for Wired Equivalent Privacy. It is based on the IEEE 802.11 standard and uses the RC4 encryption algorithm. WEP provides security by encrypting data over your wireless network so that it is protected as it is transmitted from one wireless device to another.

To gain access to a WEP network, you must know the key. The key is a string of characters that you create. When using WEP, you must determine the level of encryption. The type of encryption determines the key length. 128-bit encryption requires a longer key than 64-bit encryption. Keys are defined by entering in a string in HEX (hexadecimal - using characters 0-9, A-F) or ASCII (American Standard Code for Information Interchange – alphanumeric characters) format. ASCII format is provided so you can enter a string that is easier to remember. The ASCII string is converted to HEX for use over the network. Four keys can be defined so that you can change keys easily.

Configure WEP

It is recommended to enable encryption on your wireless router before your wireless network adapters. Please establish wireless connectivity before enabling encryption. Your wireless signal may degrade when enabling encryption due to the added overhead.

1. Log into the web-based configuration by opening a web browser and entering the IP address of the router (192.168.0.1). Click on **Wireless Setup** on the left side.
2. Next to **Security Mode**, select *Enable WEP Wireless Security (basic)*.
3. Next to **Authentication**, select either *Shared Key* or *Open*. *Shared Key* is recommended as it provides greater security when WEP is enabled.
4. Select either *64Bit* or *128Bit* encryption from the drop-down menu next to **WEP Encryption**.
5. Next to **Default Key Type**, select *WEP Key 1* and enter a WEP key that you create. Make sure you enter this key exactly on all your wireless devices. You may enter up to four different keys either using *Hex* or *ASCII*. *Hex* is recommended (letters A-F and numbers 0-9 are valid). In *ASCII* all numbers and letters are valid.
6. Click **Save Settings** to save your settings. If you are configuring the router with a wireless adapter, you will lose connectivity until you enable WEP on your adapter and enter the same WEP key as you did on the router.

WIRELESS SECURITY MODE

Security Mode :

WEP

WEP is the wireless encryption standard. To use it you must enter the same key(s) into the router and the wireless stations. For 64 bit keys you must enter 10 hex digits into each key box. For 128 bit keys you must enter 26 hex digits into each key box. A hex digit is either a number from 0 to 9 or a letter from A to F. For the most secure use of WEP set the authentication type to "Shared Key" when WEP is enabled.

You may also enter any text string into a WEP key box, in which case it will be converted into a hexadecimal key using the ASCII values of the characters. A maximum of 5 text characters can be entered for 64 bit keys, and a maximum of 13 characters for 128 bit keys.

Authentication :

WEP Encryption :

Default WEP Key :

WEP Key : (5 ASCII or 10 HEX)

What is WPA?

WPA, or Wi-Fi Protected Access, is a Wi-Fi standard that was designed to improve the security features of WEP (Wired Equivalent Privacy).

The two major improvements over WEP:

- Improved data encryption through the Temporal Key Integrity Protocol (TKIP). TKIP scrambles the keys using a hashing algorithm and, by adding an integrity-checking feature, ensures that the keys haven't been tampered with. WPA2 is based on 802.11i and uses Advanced Encryption Standard (AES) instead of TKIP.
- User authentication, which is generally missing in WEP, through the extensible authentication protocol (EAP). WEP regulates access to a wireless network based on a computer's hardware-specific MAC address, which is relatively simple to be sniffed out and stolen. EAP is built on a more secure public-key encryption system to ensure that only authorized network users can access the network.

WPA-PSK/WPA2-PSK uses a passphrase or key to authenticate your wireless connection. The key is an alpha-numeric password between 8 and 63 characters long. The password can include symbols (!?*&_) and spaces. This key must be the exact same key entered on your wireless router or access point.

WPA/WPA2 incorporates user authentication through the Extensible Authentication Protocol (EAP). EAP is built on a more secure public key encryption system to ensure that only authorized network users can access the network.

Configure WPA-PSK and WPA2-PSK

It is recommended to enable encryption on your wireless Router before your wireless network adapters. Please establish wireless connectivity before enabling encryption. Your wireless signal may degrade when enabling encryption due to the added overhead.

1. Log into the web-based configuration by opening a web browser and entering the IP address of the router (192.168.0.1). Click on **Wireless Setup** on the left side.
2. Next to **Security Mode**, select *Enable WPA Only Wireless Security (enhanced)* or *Enable WPA2 Only Wireless Security (enhanced)*.
3. Next to **Cipher Mode**, select *TKIP*, *AES*, or *Both*.
4. Next to **PSK/EAP**, select *PSK*.
5. Next to **Network Key**, enter a key (passphrase). The key is an alphanumeric password between 8 and 63 characters long. The password can include symbols (!?*&_) and spaces. Make sure you enter this key exactly the same on all other wireless clients.
6. Click **Save Settings** to save your settings. If you are configuring the Router with a wireless adapter, you will lose connectivity until you enable WPA-PSK or WPA2-PSK on your adapter and enter the same passphrase as you did on the Router.

WIRELESS SECURITY MODE

Security Mode : Enable WPA Only Wireless Security (enhanced) ▼

WPA ONLY

WPA Only requires stations to use high grade encryption and authentication.

Cipher Type : TKIP ▼

PSK / EAP : PSK ▼

Network Key : (8~63 ASCII or 64 HEX)

Save Settings
Don't Save Settings

WIRELESS SECURITY MODE

Security Mode : Enable WPA2 Only Wireless Security (enhanced) ▼

WPA2 ONLY

WPA2 Only requires stations to use high grade encryption and authentication.

Cipher Type : TKIP ▼

PSK / EAP : PSK ▼

Network Key : (8~63 ASCII or 64 HEX)

Save Settings
Don't Save Settings

Configure WPA/WPA2-PSK

It is recommended to enable encryption on your wireless Router before your wireless network adapters. Please establish wireless connectivity before enabling encryption. Your wireless signal may degrade when enabling encryption due to the added overhead.

1. Log into the web-based configuration by opening a web browser and entering the IP address of the router (192.168.0.1). Click on **Wireless Setup** on the left side.
2. Next to **Security Mode**, select *Enable WPA/WPA2 Wireless Security (enhanced)*.
3. Next to **Cipher Mode**, select *TKIP*, *AES*, or *Both*.
4. Next to **PSK/EAP**, select *PSK*.
5. Next to **Network Key**, enter a key (passphrase). The key is an alpha-numeric password between 8 and 63 characters long. The password can include symbols (!?*&_) and spaces. Make sure you enter this key exactly the same on all other wireless clients.
6. Click **Save Settings** to save your settings. If you are configuring the Router with a wireless adapter, you will lose connectivity until you enable WPA/WPA2-PSK on your adapter and enter the same passphrase as you did on the Router.

WIRELESS SECURITY MODE

Security Mode :

WPA/WPA2

WPA/WPA2 requires stations to use high grade encryption and authentication.

Cipher Type :

PSK / EAP :

Network Key : (8~63 ASCII or 64 HEX)

Configure WPA, WPA2, and WPA/WPA2 (RADIUS)

It is recommended to enable encryption on your wireless router before your wireless network adapters. Please establish wireless connectivity before enabling encryption. Your wireless signal may degrade when enabling encryption due to the added overhead.

1. Log into the web-based configuration by opening a web browser and entering the IP address of the router (192.168.0.1). Click on **Wireless Settings** on the left side.
2. Next to **Security Mode**, select *Enable WPA Only Wireless Security (enhanced)*, *Enable WPA2 Only Wireless Security (enhanced)*, or *Enable WPA/WPA2 Wireless Security (enhanced)*.
3. Next to **Cipher Type**, select *TKIP*, *AES*, or *Auto*.
4. Next to **PSK/EAP**, select *EAP*.
5. Next to **RADIUS Server 1** enter the **IP Address** of your RADIUS server.
6. Next to **Port**, enter the port you are using with your RADIUS server. *1812* is the default port.
7. Next to **Shared Secret**, enter the security key.
8. If you have a secondary RADIUS server, enter its IP address, port, and secret key.
9. Click **Save Settings** to save your settings.

WIRELESS SECURITY MODE

Security Mode : Enable WPA Only Wireless Security (enhanced) ▼

WPA ONLY

WPA Only requires stations to use high grade encryption and authentication.

Cipher Type : TKIP ▼

PSK / EAP : EAP ▼

802.1X

RADIUS Server 1 IP Address :

Port :

Shared Secret :

RADIUS Server 2 IP Address :

Port :

Shared Secret :

Connect to a Wireless Network Using Windows® XP

Windows® XP users may use the built-in wireless utility (Zero Configuration Utility). The following instructions are for Service Pack 2 users. If you are using another company's utility or Windows® 2000, please refer to the user manual of your wireless adapter for help with connecting to a wireless network. Most utilities will have a "site survey" option similar to the Windows® XP utility as seen below.

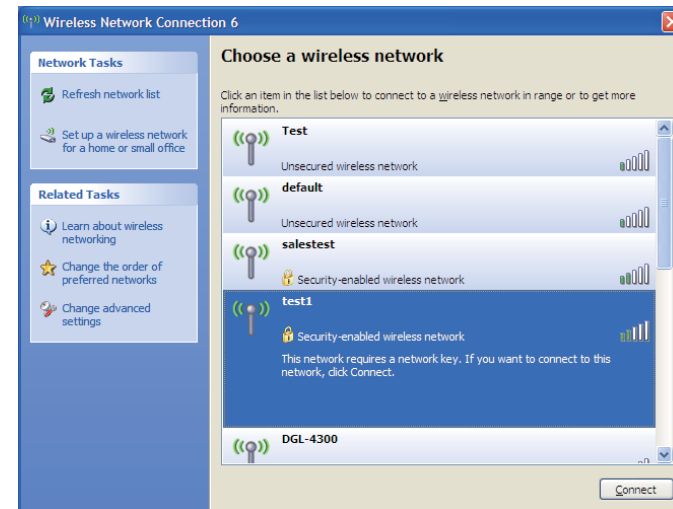
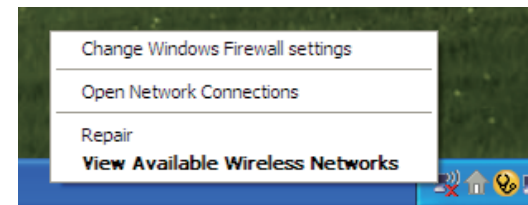
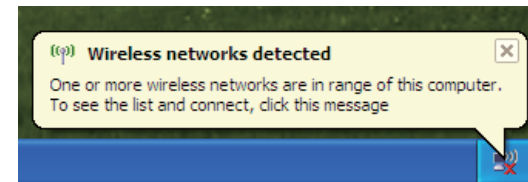
If you receive the **Wireless Networks Detected** bubble, click on the center of the bubble to access the utility.

or

Right-click on the wireless computer icon in your system tray (lower-right corner next to the time). Select **View Available Wireless Networks**.

The utility will display any available wireless networks in your area. Click on a network (displayed using the SSID) and click the **Connect** button.

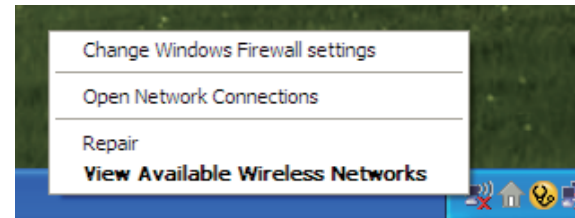
If you get a good signal but cannot access the Internet, check you TCP/IP settings for your wireless adapter. Refer to the **Networking Basics** section in this manual for more information.



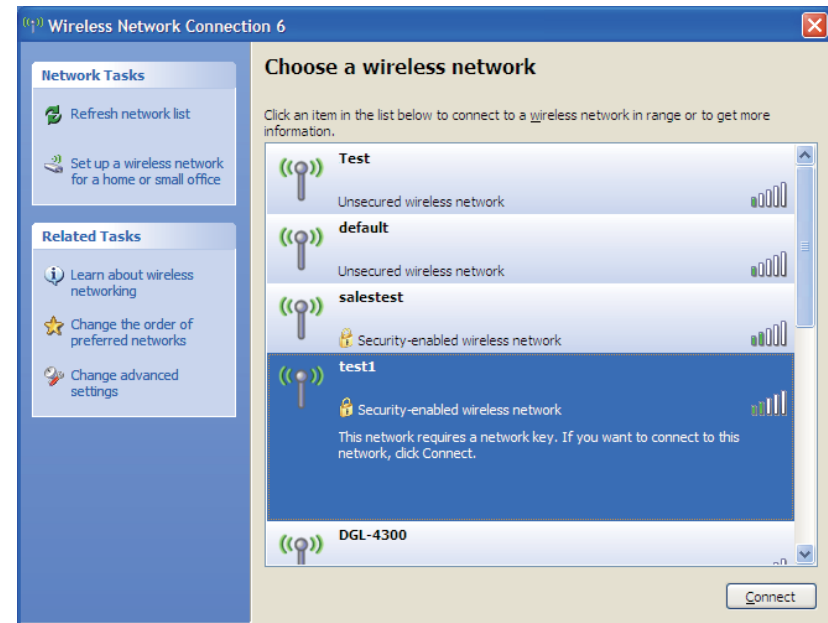
Configure WEP

It is recommended to enable WEP on your wireless router or access point before configuring your wireless adapter. If you are joining an existing network, you will need to know the WEP key being used.

1. Open the Windows® XP Wireless Utility by right-clicking on the wireless computer icon in your system tray (lower-right corner of screen). Select **View Available Wireless Networks**.

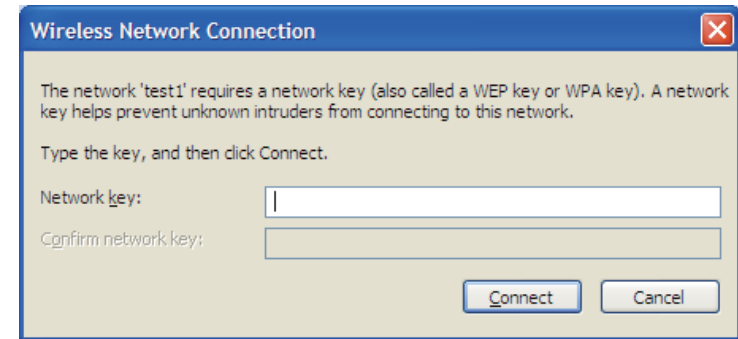


2. Highlight the wireless network (SSID) you would like to connect to and click **Connect**.



3. The **Wireless Network Connection** box will appear. Enter the same WEP key that is on your router and click **Connect**.

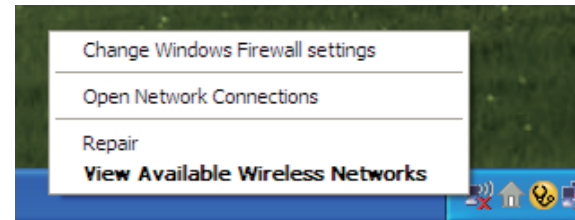
It may take 20-30 seconds to connect to the wireless network. If the connection fails, please verify that the WEP settings are correct. The WEP key must be exactly the same as on the wireless router.



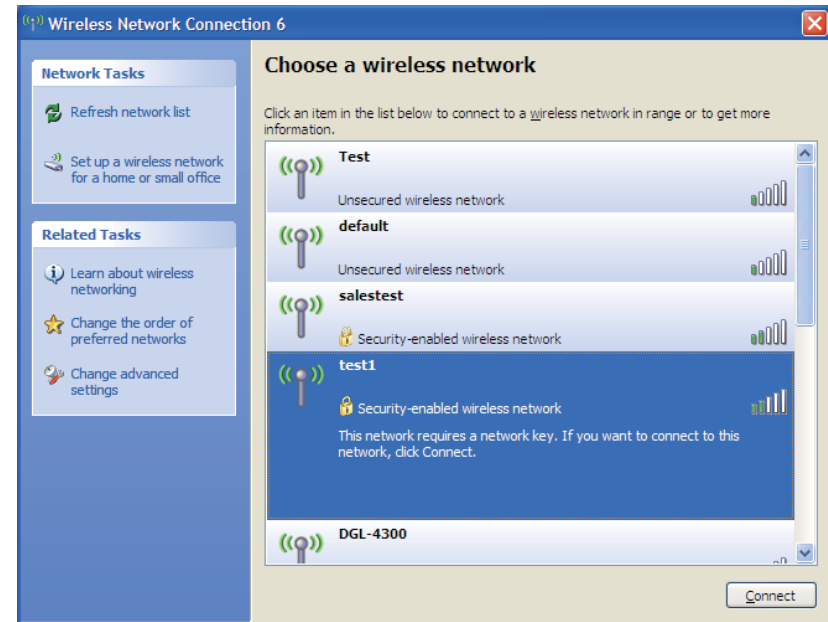
Configure WPA-PSK

It is recommended to enable WEP on your wireless router or access point before configuring your wireless adapter. If you are joining an existing network, you will need to know the WEP key being used.

1. Open the Windows® XP Wireless Utility by right-clicking on the wireless computer icon in your system tray (lower-right corner of screen). Select **View Available Wireless Networks**.

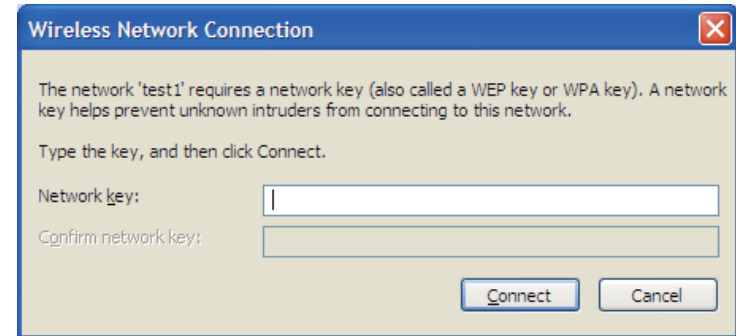


2. Highlight the wireless network (SSID) you would like to connect to and click **Connect**.



3. The **Wireless Network Connection** box will appear. Enter the WPA-PSK passphrase and click **Connect**.

It may take 20-30 seconds to connect to the wireless network. If the connection fails, please verify that the WPA-PSK settings are correct. The WPA-PSK passphrase must be exactly the same as on the wireless router.



Setting Up Wi-Fi Protection (WCN 2.0 in Windows Vista)

The DIR-605L supports Wi-Fi protection, referred to as WCN 2.0 in Windows Vista. The instructions for setting this up depend on whether you are using Windows Vista to configure the Router or third party software.

Initial Router Configuration for Wi-Fi Protection

When you first set up the Router, Wi-Fi protection is disabled and unconfigured. To enjoy the benefits of Wi-Fi protection, the Router must be both enabled and configured. There are three basic methods to accomplish this: use Windows Vista's built-in support for WCN 2.0, use software provided by a third party, or use the traditional Ethernet approach.

If you are running Windows Vista, tick the Enable checkbox on the **Wireless Network** window. Use the Current PIN that is displayed on the **Wireless Network** window or choose to click the **Generate New PIN** button or **Reset PIN to Default** button.



If you are using third party software to set up Wi-Fi Protection, carefully follow the directions. When you are finished, proceed to the next section to set up the newly-configured Router.

Setting Up a Configured Router

Once the Router has been configured, you can use the push button on the Router or third party software to invite a newcomer to join your Wi-Fi protected network. For maximum security, the software method is recommended. However, the push button method is ideal if there is no access to a GUI.

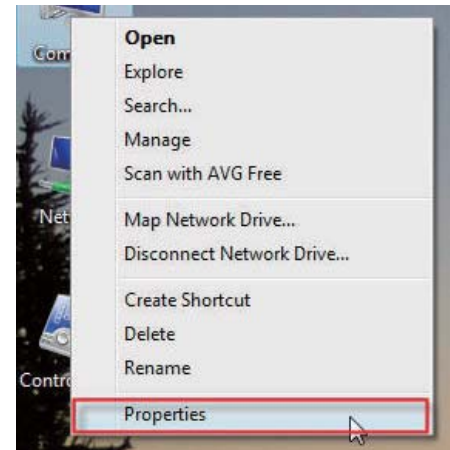
If you are using the Router's Wi-Fi Security push button option, simultaneously depress the push button located on the side of the Router and the button on the client (or virtual button on the client's GUI). Next click **Finish**. The Client's software will then allow a newcomer to join your secure, Wi-Fi protected network.

If you are using third party software, run the appropriate Wi-Fi Protected System utility. You will be asked to either use the push button method or to manually enter the PIN. Follow the on-screen instructions.

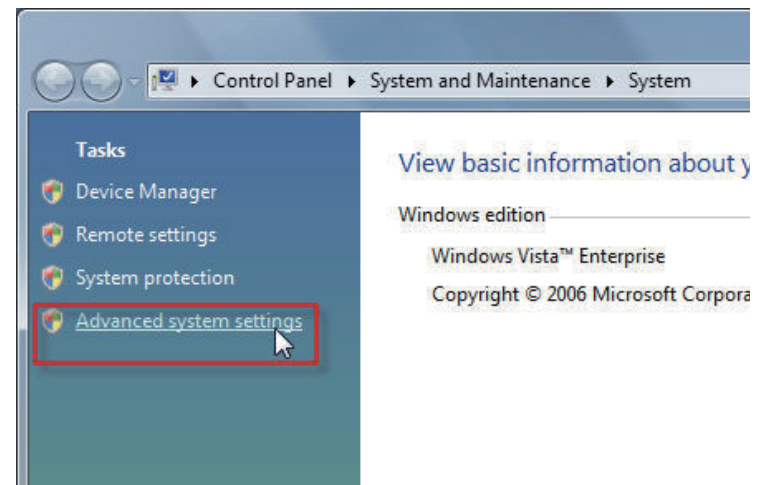
Changing the Computer Name and Joining a Workgroup

The following are step-by-step directions to change the computer name and join a workgroup.

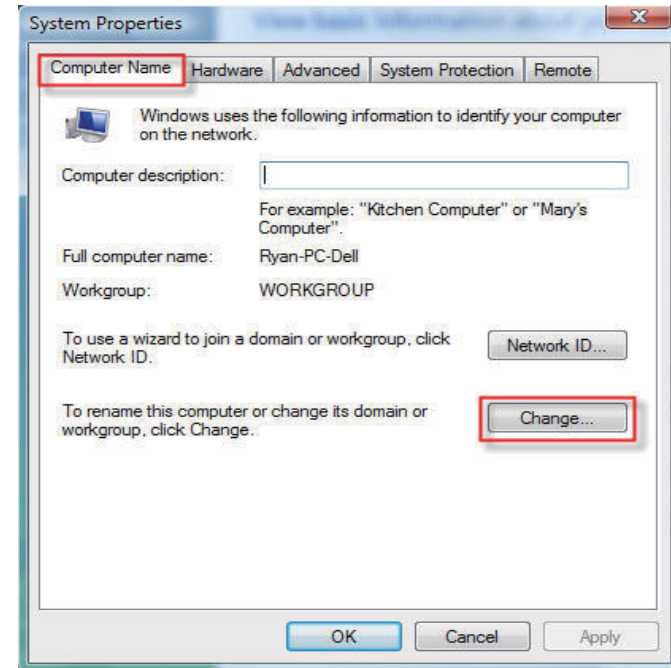
1. Click on **Properties**.



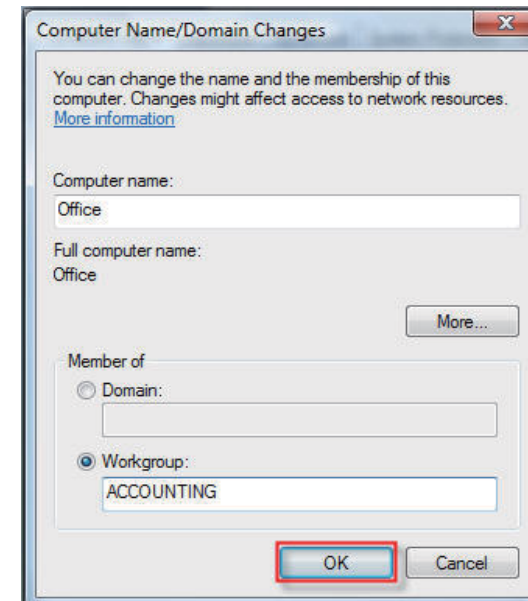
2. Click on the **Advanced system settings** link.



3. Click the **Computer Name** tab in the **System Properties** window and enter a description of your computer in the textbox. When you are finished, click the **Change** button.



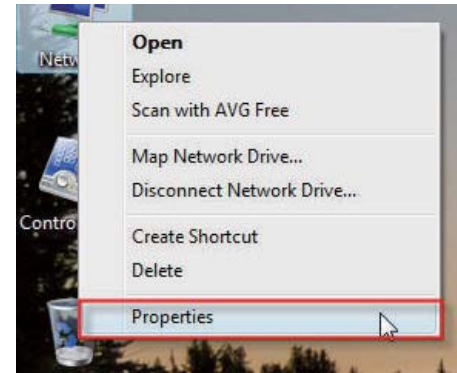
4. Go to the **Computer Name/Domain Changes** window and click the radio button next to the Workgroup you want to join. When you are finished, click the **OK** button.



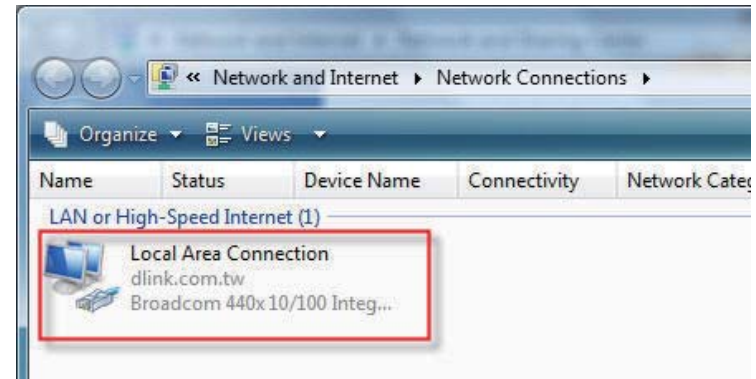
Configuring the IP Address in Vista

The following are step-by-step directions to configure the IP address in Windows Vista.

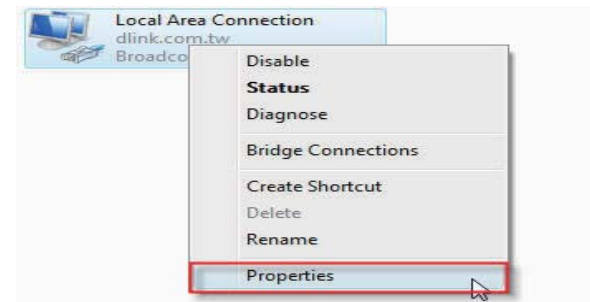
1. Click on **Properties**.



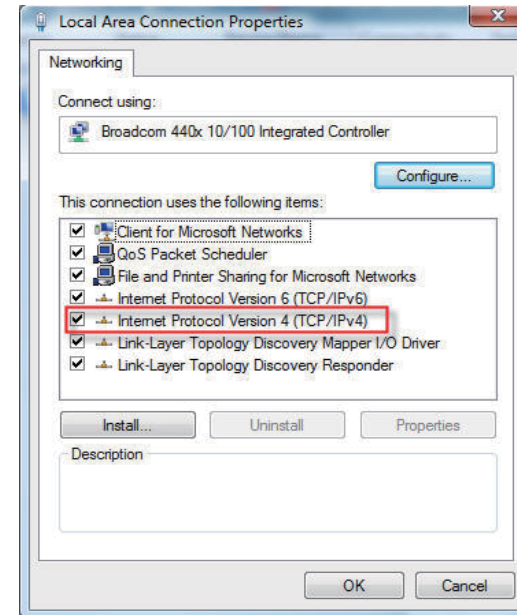
2. Go to the **Network and Internet** window and click the appropriate **Local Area Connection** icon.



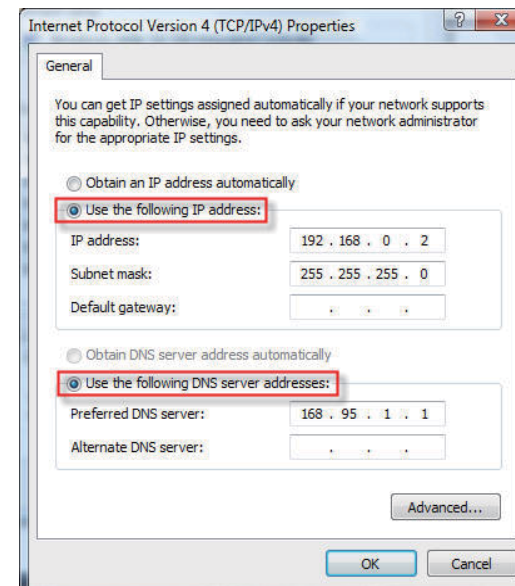
3. Right-click the **Local Area Connection** icon and then select **Properties** from the drop-down menu.



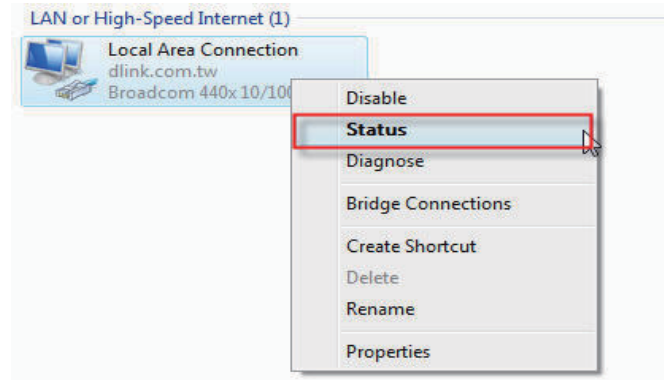
4. Tick the **Internet Protocol Version 4 (TCP/IPv4)** checkbox in the **Networking** tab in the **Local Area Connection Properties** window.



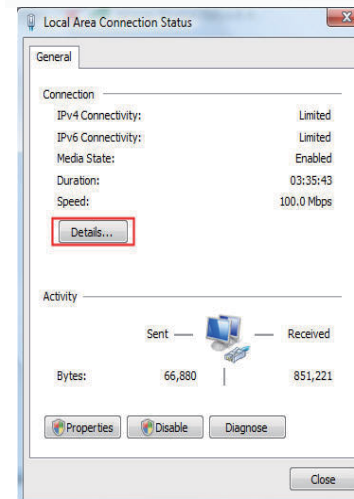
5. Click the "Use the following IP address" option in the **General** tab in the **Local Area Connections Properties** window and enter the desired IP address in the space offered. Then click the "Use the following DNS server addresses" option on the same tab and enter the desired DNS server information.



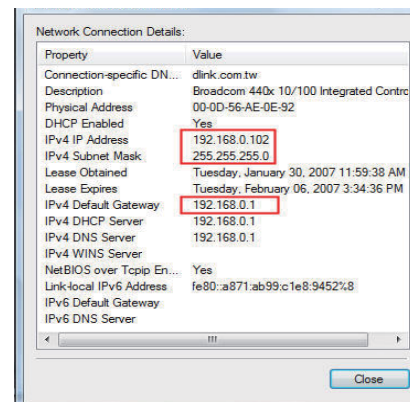
6. Right-click the **Local Area Connection** icon and then select **Status** from the drop-down menu.



7. Go to the **Local Area Connection Status** window and click the **Details** button.



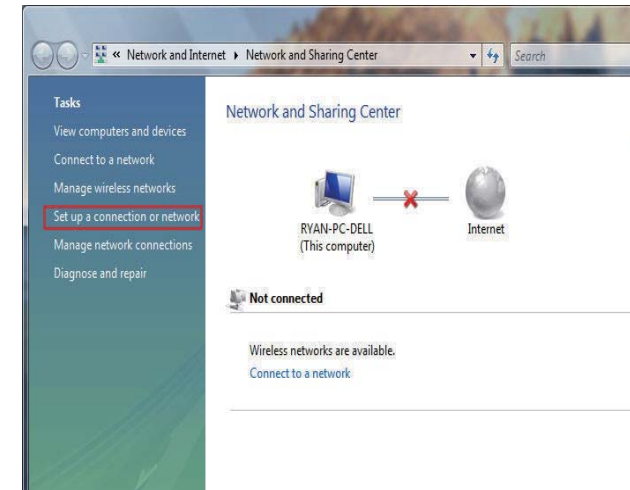
8. Confirm your new settings on the **Network Connection Status** window. When you are finished, click the **Done** button.



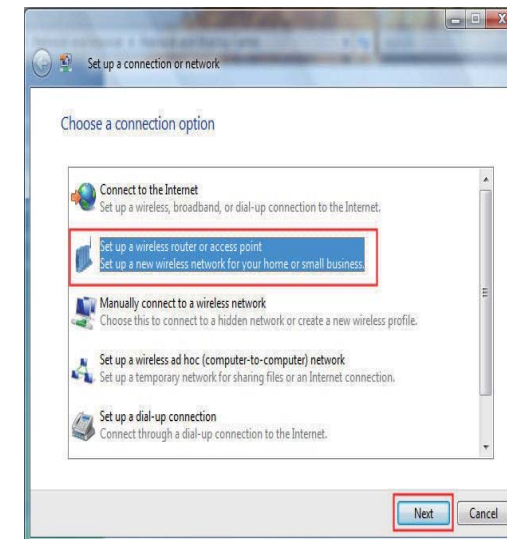
Setting Up a Connection or Network Wirelessly

The following are step-by-step directions to set up a wireless connection.

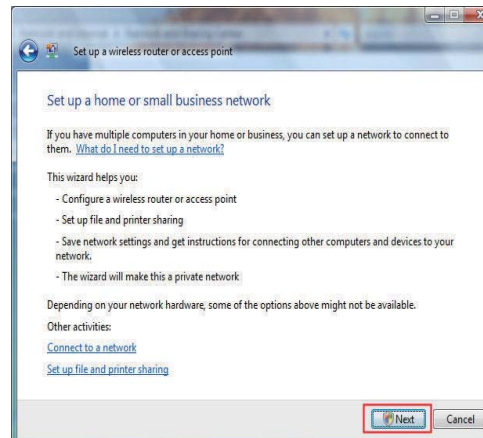
1. Click on **Set up a connection or network** in the **Network and Sharing Center** section.



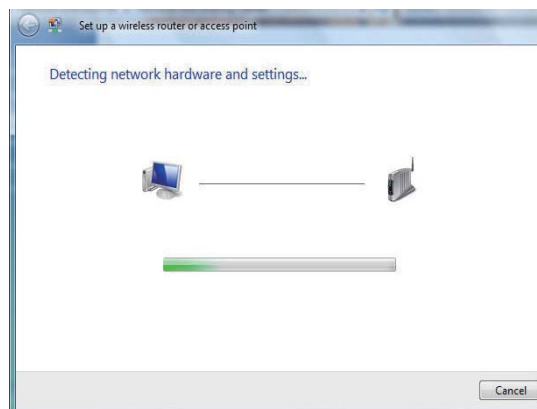
2. Go to the **Set up a connection or network** window and choose the **Set up a wireless router or access point** **Set up a new wireless network for your home or business** option. Click the **Next** button.



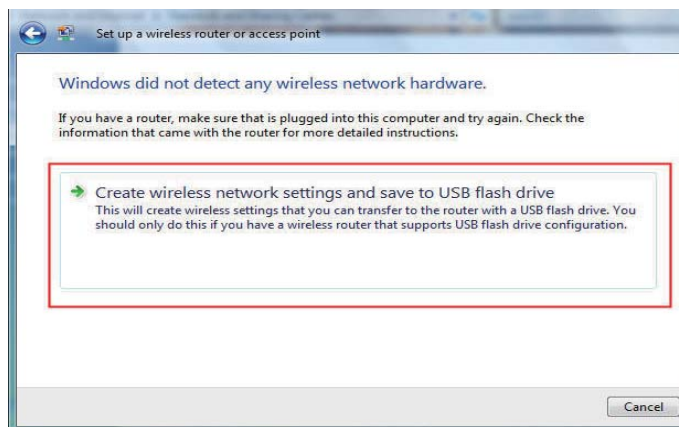
3. Click the **Next** button on the **Set up a wireless router or access point** window.



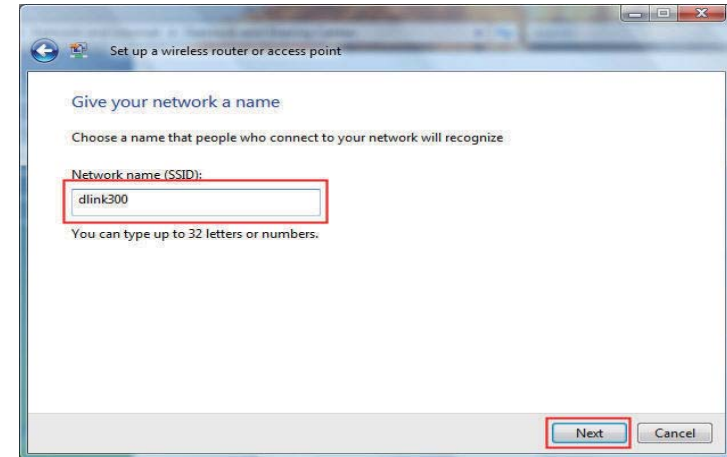
4. The following window displays the system progress.



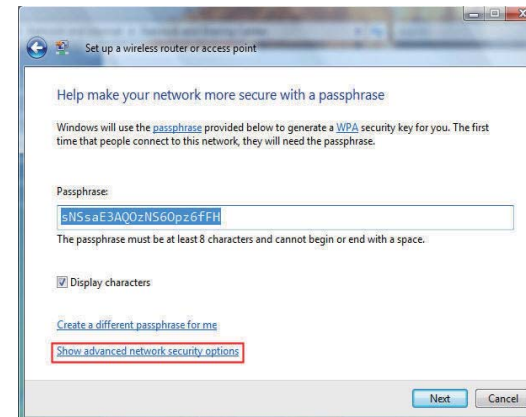
5. This window confirms that you want to create wireless network settings that are savable to a USB flash drive.



6. Enter a network name on the **Give your network a name** window in the **Set up a wireless router or access point** wizard. Click the **Next** button.



7. Enter a passphrase on the **Help make your network more secure with a passphrase** window in the **Set up a wireless router or access point** wizard. Click the **Show advanced network security options** link.



8. Select security method on the **Choose advanced network security options** window in the **Set up a wireless router or access point** wizard. Click the **Next** button.

