

BOXEE
BOX
BOX



Need Help With Something?

Find out how to get the most out of your Boxee Box with tutorial videos, tech support, and more at dlink.com/boxeebox

Trouble setting up your Boxee Box?
Give us a call and we'll walk you through it!

United States

(877) 453-4565
<http://support.dlink.com>

Canada

(800) 361-4565
<http://support.dlink.ca>

Australia

<http://support.dlink.com.au>

New Zealand

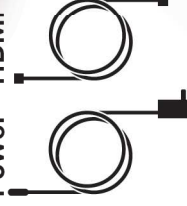
<http://support.dlink.com.au>

©2010 D-Link Corporation/D-Link Systems, Inc. All rights reserved. D-Link, the D-Link logo, and the D-Link RoHS logo are trademarks or registered trademarks of D-Link Corporation or its subsidiaries in the United States and/or other countries. Boxee and the Boxee logo are trademarks or registered trademarks of Boxee Inc. or its subsidiaries in the United States and/or other countries. Other trademarks or registered trademarks are the property of their respective owners.

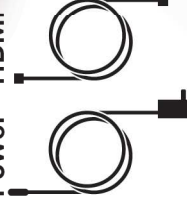
Your Little Black Box



Power



HDMI



SD/MMC card slot



Pairing your Boxee Remote to the Boxee Box

Your remote comes from the factory already paired to the Boxee Box. If you are noticing interference with your remote from other devices, you may pair the remote with the Boxee Box in the easy steps below:

1. Make sure to move other devices away from the Boxee Box (or turn them off)
2. Put the remote in close proximity with the Boxee Box.
3. Press and hold the OK key on the side of the remote for 5 seconds.
4. Pairing is complete when you can control the Boxee Box. There is no visual indication of pairing on the device.
5. You can immediately use the remote control now.

Your Two-Faced Remote

Play/Pause - We know you get it

Directional Pad - Navigate your way around

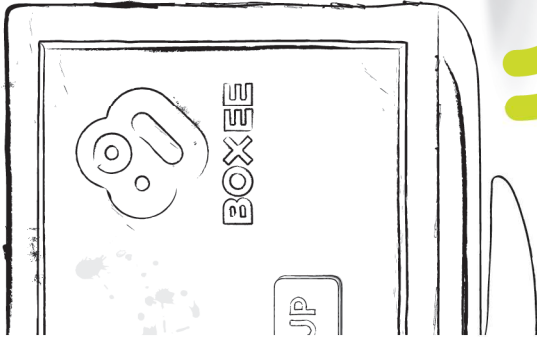
Enter Button - Accept the current selection / show playback menu

Menu - Go back / show jump menu



Step 4

Follow the on-screen instructions to configure your new Boxee Box by D-Link.



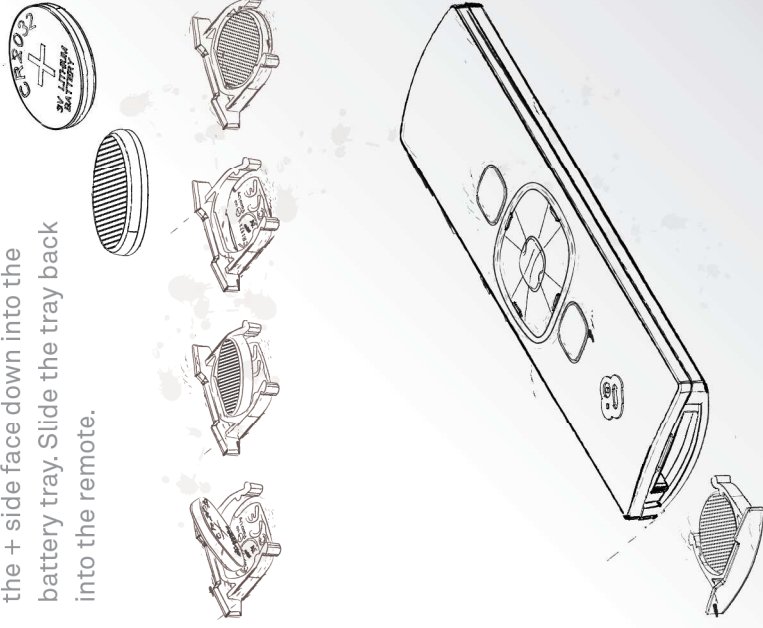
Warning: To block adult content, configure Parental Controls under settings.



NEED HELP?
support.dlink.com/boxeebox

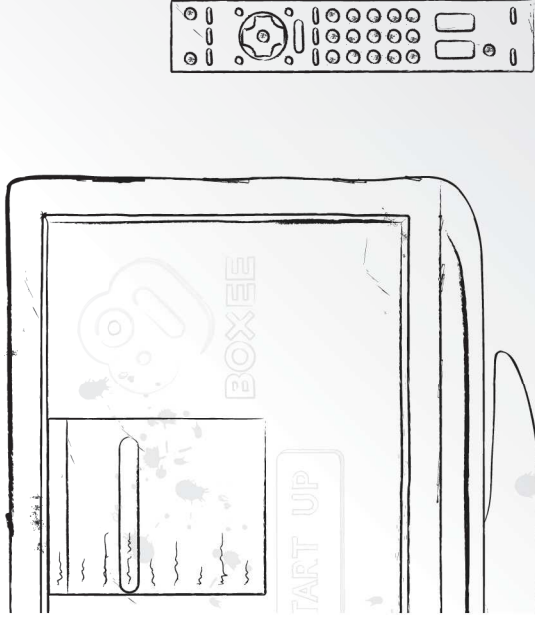
Inserting the Battery

With a coin, remove the battery tray. Insert the battery with the + side face down into the battery tray. Slide the tray back into the remote.



Step 3

Turn on your Boxee Box. Then use the TV's remote control to turn on your TV and set it to the correct HDMI input source. You should see the Boxee Box smiling at you.



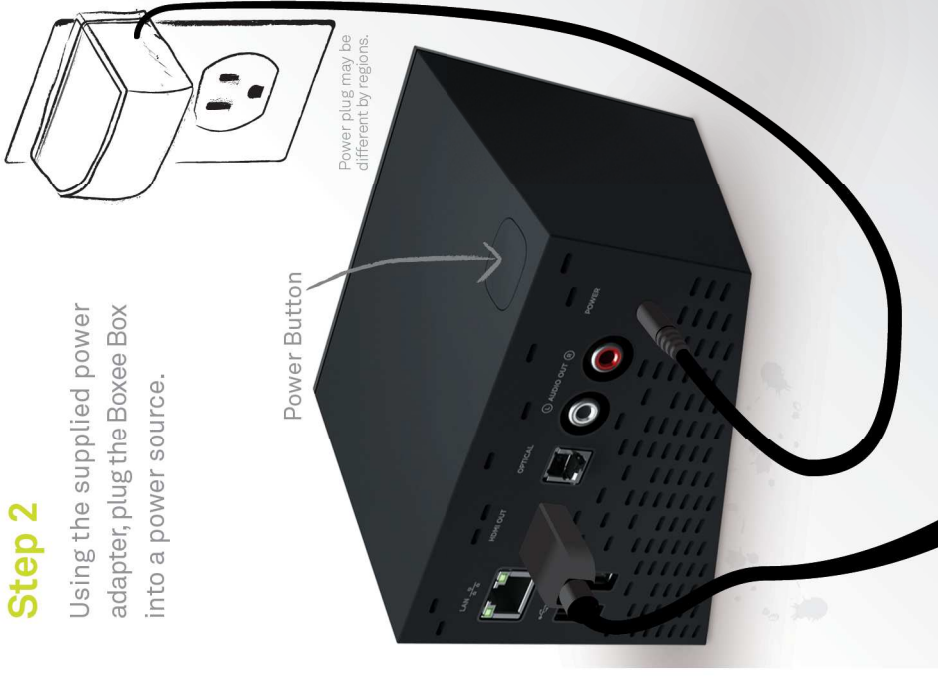
Step 1

Using the supplied HDMI cable, connect the Boxee Box to your TV.



Step 2

Using the supplied power adapter, plug the Boxee Box into a power source.



CE Mark Warning:

This is a Class B product. In a domestic environment, this product may cause radio interference, in which case the user may be required to take adequate measures.

FCC Statement:

This equipment has been tested and found to comply with the limits for a Class B digital device, pursuant to part 15 of the FCC Rules. These limits are designed to provide reasonable protection against harmful interference in a residential installation. This equipment generates, uses, and can radiate radio frequency energy and, if not installed and used in accordance with the instructions, may cause harmful interference to radio communication. However, there is no guarantee that interference will not occur in a particular installation. If this equipment does cause harmful interference to radio or television reception, which can be determined by turning the equipment off and on, the user is encouraged to try to correct the interference by one or more of the following measures:

- Reorient or relocate the receiving antenna.
- Increase the separation between the equipment and receiver.
- Connect the equipment into an outlet on a circuit different from that to which the receiver is connected.
- Consult the dealer or an experienced radio/TV technician for help.

FCC Caution:

Any changes or modifications not expressly approved by the party responsible for compliance could void the user's authority to operate this equipment.

This device complies with Part 15 of the FCC Rules. Operation is subject to the following two conditions:

(1) This device may not cause harmful interference, and (2) this device must accept any interference received, including interference that may cause undesired operation.

IMPORTANT NOTICE:**FCC Radiation Exposure Statement:**

This equipment complies with FCC radiation exposure limits set forth for an uncontrolled environment. This equipment should be installed and operated with minimum distance 20cm between the radiator & your body. This transmitter must not be co-located or operating in conjunction with any other antenna or transmitter. The availability of some specific channels and/or operational frequency bands are country dependent and are firmware programmed at the factory to match the intended destination. The firmware setting is not accessible by the end user.

For detailed warranty information applicable to products purchased outside the United States, please contact the corresponding local D-Link office.

Industry Canada Notice:

This device complies with RSS-210 of the Industry Canada Rules. Operation is subject to the following two conditions:

(1) This device may not cause harmful interference, and (2) this device must accept any interference received, including interference that may cause undesired operation.

IMPORTANT NOTE:**Radiation Exposure Statement:**

This equipment complies with IC radiation exposure limits set forth for an uncontrolled environment. This equipment should be installed and operated with minimum distance 20cm between the radiator & your body.

This device has been designed to operate with an antenna having a maximum gain of 2dB. Antenna having a higher gain is strictly prohibited per regulations of Industry Canada. The required antenna impedance is 50 ohms.