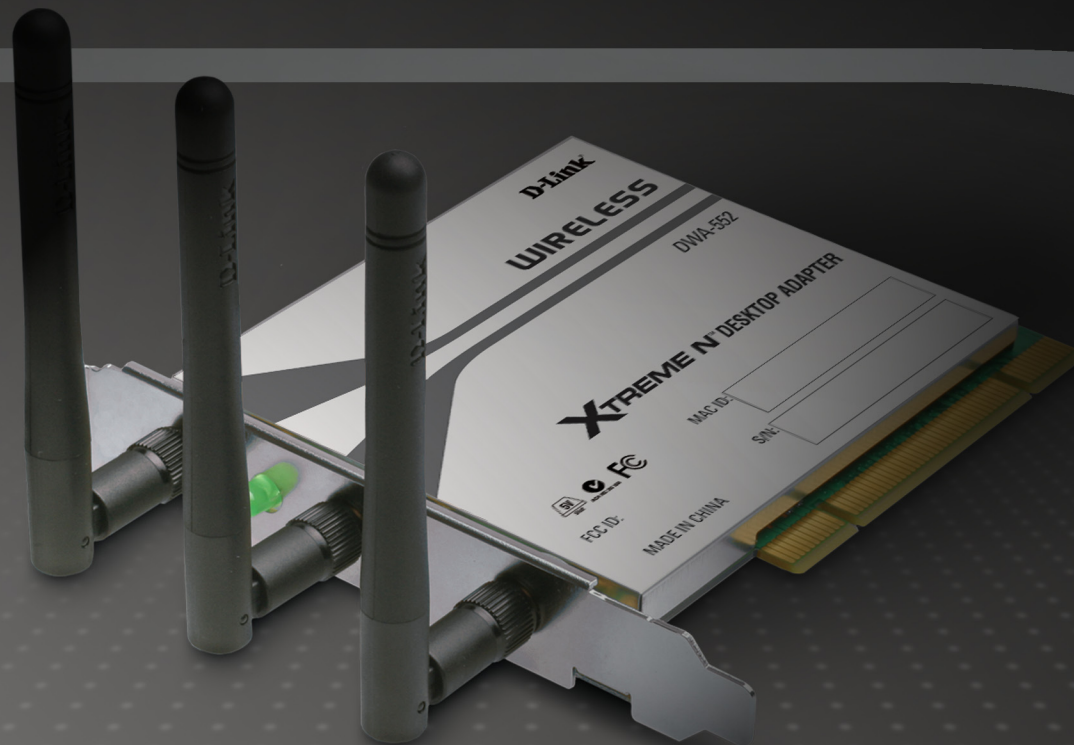


# USER MANUAL

DWA-552

VERSION 1.1



# Table of Contents

<b>Product Overview</b> .....	<b>3</b>	Configure WPA™/WPA2™-Personal.....	28
Package Contents .....	3	Using the D-Link Utility .....	28
System Requirements.....	3	Using Windows Vista® .....	30
Introduction .....	4	Using Windows® XP .....	32
Features .....	5	Configure WPA™/WPA2™-Enterprise .....	34
Hardware Overview.....	6	Using the D-Link Utility .....	34
LEDs .....	6	Configure 802.1x (RADIUS).....	35
		Using the D-Link Utility .....	35
<b>Installation</b> .....	<b>7</b>	<b>Troubleshooting</b> .....	<b>36</b>
Getting Started .....	7	<b>Wireless Basics</b> .....	<b>41</b>
Remove Existing Installations .....	7	<b>Networking Basics</b> .....	<b>46</b>
Disable Other Wireless Adapters .....	8	Check your IP address .....	46
Wireless Installation Considerations .....	10	Windows® XP/2000 Users .....	46
Adapter Installation .....	11	Windows Vista® Users .....	46
		Statically Assign an IP address .....	47
<b>Configuration</b> .....	<b>17</b>	Windows® XP/2000 Users .....	47
D-Link Wireless Connection Manager.....	17	Windows Vista® Users .....	48
Wireless Networks .....	18	<b>Technical Specifications</b> .....	<b>49</b>
My Wireless Networks.....	19	<b>Contacting Technical Support</b> .....	<b>50</b>
Support.....	22	<b>Warranty</b> .....	<b>51</b>
About.....	23	<b>Registration</b> .....	<b>57</b>
<b>Connect to a Wireless Network</b> .....	<b>24</b>		
Using Windows Vista® .....	24		
Using Windows® XP .....	26		
<b>Wireless Security</b> .....	<b>27</b>		
What is WPA™? .....	27		

# Package Contents

- D-Link DWA-552 Xtreme N™ Desktop Adapter
- Three (3) Antennas
- Manual and Warranty on CD
- D-Link Wireless Connection Manager on CD



# System Requirements

- A desktop computer with an available PCI slot
- Windows Vista®, XP (Service Pack 2), or 2000 (Service Pack 4)
- 300MHz processor and at least 64MB of RAM

# Introduction

The D-Link Xtreme N™ Desktop Adapter (DWA-552) is a Draft 802.11n client device that delivers unrivaled wireless performance for your desktop computer. With the DWA-552, you can add or upgrade your Desktop PC's wireless connectivity without having to purchase a new computer. Once connected, access your network's high-speed Internet connection while sharing photos, files, music, video, printers, and storage. Get a better Internet experience with a faster wireless connection so you can enjoy digital phone calls, gaming, downloading, and video streaming.

Powered by Xtreme N™ technology, the DWA-552 provides a faster wireless connection and superior reception than 802.11g\*. The DWA-552 is designed for use in bigger homes and for those that demand higher networking. Maximize wireless performance by connecting this desktop adapter to a Xtreme N™ Router and stay connected from virtually anywhere in the home. This adapter supports WPA and WPA2 encryption to prevent outside intrusion and protect your personal information from being exposed.

The D-Link Xtreme N™ DWA-552 is a powerful 32-bit desktop adapter that installs quickly and easily into desktop computers. Like all D-Link wireless adapters, the DWA-552 can be used in ad-hoc mode to connect directly with other cards for peer-to-peer file sharing or in infrastructure mode to connect with a wireless access point or router for access to the Internet in your office or home network.

The DWA-552 features robust security to help protect the wireless network from intruders, complying with the latest wireless networking security protocols, including Wi-Fi Protected Access (WPA/WPA2) support. The DWA-552 also includes a configuration utility to discover available wireless networks and create and save detailed connectivity profiles for those networks most often accessed.

\*Maximum wireless signal rate derived from IEEE Standard 802.11g and draft 802.11n specifications. Actual data throughput will vary. Network conditions and environmental factors, including volume of network traffic, building materials and construction, and network overhead, lower actual data throughput rate. Environmental factors will adversely affect wireless signal range.

# Features

- **Faster Wireless Networking\*** - Enable wireless connectivity on your Desktop PC computer with the DWA-552. With the performance of D-Link's Xtreme N™ line of wireless products, the DWA-552 delivers an unsurpassed wireless experience. Perform multiple network tasks at once with the speed provided by this Wireless Adapter.
- **Compatible with 802.11g Devices** - Fully compatible with the 802.11g standards, the DWA-552 can connect with existing 802.11g compliant routers, access points and cards. That means you can still communicate with colleagues and friends while you have the ability to link to even more wireless networks.
- **Better Security with 802.1x and WPA/WPA2** - With the DWA-552 in your Desktop PC you can securely connect to a wireless network using 802.1x for wireless authentication, as well as WPA/WPA2 (Wi-Fi Protected Access) providing you a much higher level of security for your data and communication than has previously been available.
- **Total Performance** - Upgrade your computer with the latest draft 802.11n technology.
- **Total Wireless Protection** - Connect to secure wireless networks using WPA/WPA2.
- **Total Connectionn** - Get reception throughout your home by connecting to an Xtreme N™ Router.

\*Maximum wireless signal rate derived from IEEE Standard 802.11g and draft 802.11n specifications. Actual data throughput will vary. Network conditions and environmental factors, including volume of network traffic, building materials and construction, and network overhead, lower actual data throughput rate. Environmental factors will adversely affect wireless signal range.

# Hardware Overview

## LEDs



### WLAN LED

A solid light indicates that wireless is ready. This LED blinks during wireless data transmission.

# Installation

This section will walk you through the installation process. If you have a built-in wireless adapter, please disable it in device manager before installing your D-Link adapter. Also, if you have previously installed another wireless adapter, please make sure any software is uninstalled.

## Getting Started

Before installing your new D-Link wireless adapter, please verify the following:

- Remove any previous installations of wireless adapters
- Disable any built-in wireless adapters
- Verify the settings such as the SSID and security settings of the network(s) you want to connect to

## Remove Existing Installations

If you've installed a different manufacturer's adapter or a different model D-Link adapter, make sure the software is uninstalled before installing the new software. Some utilities may cause a conflict with the new software. If you plan to use multiple adapters at different times, make sure the utilities are not set to load when your computer boots up. Windows Vista® and XP users may use the built-in wireless utility for all adapters.

To remove any old software:

Windows Vista®/XP users: Click **Start > Control Panel > Add or Remove Programs**.

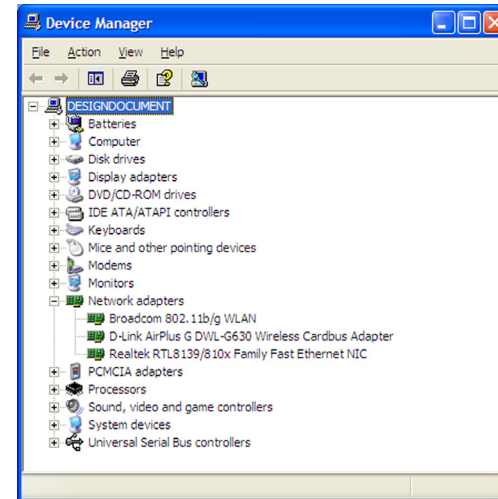
Windows® 2000 users: Click **Start > Settings > Control Panel > Add or Remove Programs**.

# Disable Other Wireless Adapters

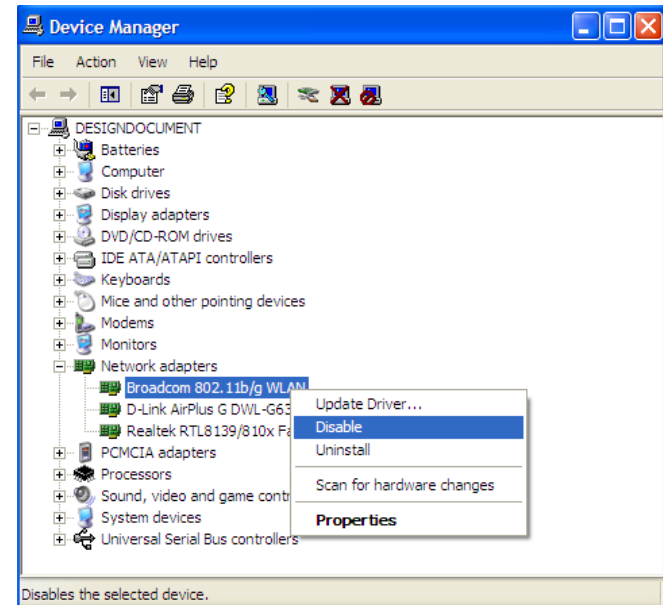
To prevent any conflicts with the D-Link wireless adapter, it is recommended to disable any wireless adapter (as well as any unused Ethernet adapters).

From the desktop, right-click on the **My Computer** icon and select **Properties**.

Click the **Hardware** tab and then click **Device Manager**. Scroll down the list and click the **+** sign to the left of **Network Adapters**.

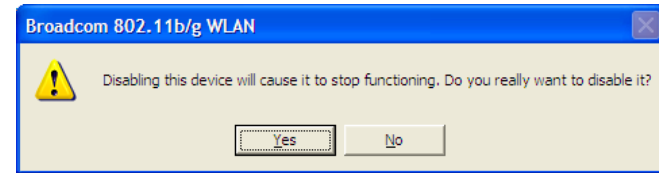


Right-click the adapter you would like to disable and select **Disable**.



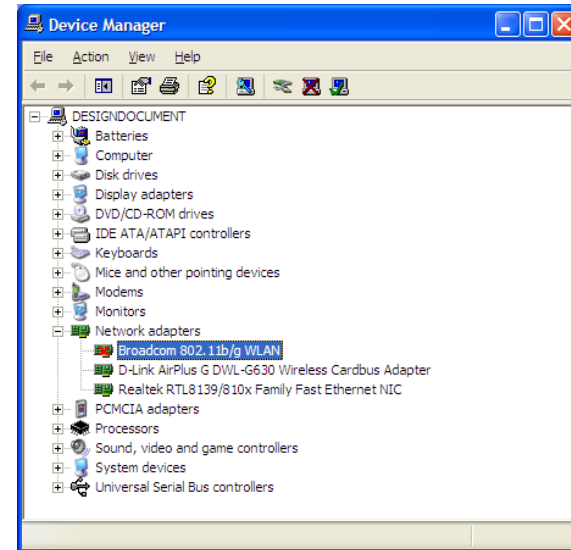


Click **Yes** to disable the adapter.



The adapter is now disabled. When disabled, a red X will be displayed.

Disabling the adapter will not remove the drivers. If you would like to use the adapter, simply right-click it and select **Enable**.



# Wireless Installation Considerations

The D-Link wireless adapter lets you access your network using a wireless connection from virtually anywhere within the operating range of your wireless network. Keep in mind, however, that the number, thickness and location of walls, ceilings, or other objects that the wireless signals must pass through, may limit the range. Typical ranges vary depending on the types of materials and background RF (radio frequency) noise in your home or business. The key to maximizing wireless range is to follow these basic guidelines:

1. Keep the number of walls and ceilings between the D-Link adapter and other network devices to a minimum - each wall or ceiling can reduce your adapter's range from 3-90 feet (1-30 meters.) Position your devices so that the number of walls or ceilings is minimized.
2. Be aware of the direct line between network devices. A wall that is 1.5 feet thick (.5 meters), at a 45-degree angle appears to be almost 3 feet (1 meter) thick. At a 2-degree angle it looks over 42 feet (14 meters) thick! Position devices so that the signal will travel straight through a wall or ceiling (instead of at an angle) for better reception.
3. Building Materials make a difference. A solid metal door or aluminum studs may have a negative effect on range. Try to position access points, wireless routers, and computers so that the signal passes through drywall or open doorways. Materials and objects such as glass, steel, metal, walls with insulation, water (fish tanks), mirrors, file cabinets, brick, and concrete will degrade your wireless signal.
4. Keep your product away (at least 3-6 feet or 1-2 meters) from electrical devices or appliances that generate RF noise.
5. If you are using 2.4GHz cordless phones or X-10 (wireless products such as ceiling fans, lights, and home security systems), your wireless connection may degrade dramatically or drop completely. Make sure your 2.4GHz phone base is as far away from your wireless devices as possible. The base transmits a signal even if the phone is not in use.

# Adapter Installation

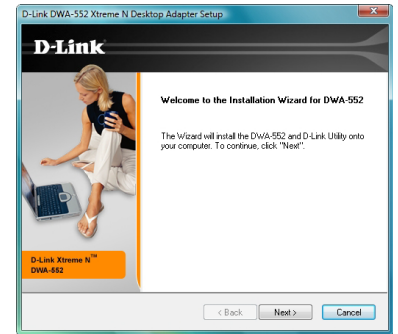
**Note:** Please install the DWA-552 Desktop Adapter into your computer before installing the driver software from the D-Link CD. When the “Add New Hardware” wizard appears, click **Cancel**.

Turn on the computer and Insert the D-Link DWA-552 Driver CD in the CD-ROM drive. The step-by-step instructions that follow are shown in Windows Vista®. The steps and screens are similar for the other Windows operating systems.

If the CD Autorun function does not automatically start on your computer, go to **Start > Run**. In the run box type “**D:\DWA552.exe**” (where **D:** represents the drive letter of your CD-ROM drive).



The **InstallShield Wizard** window will appear.  
Click **Next** to continue.



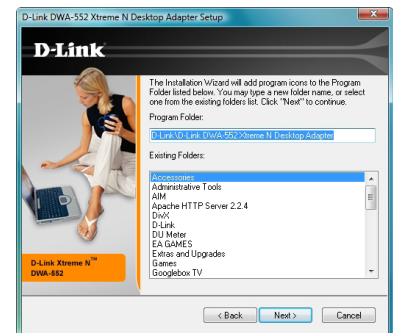
Click **Next**

By default setup will install to the default location: *C:\Program Files\D-Link\DWA-552*, where C: represents the drive letter of your hard drive. To install to a different location click **Browse** and specify the location. Click **Next**.



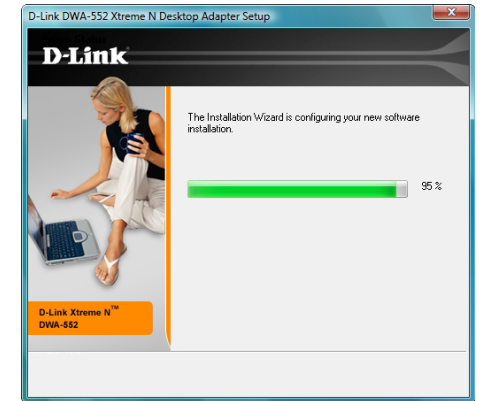
Click **Next**

Select the Program Files folder location.



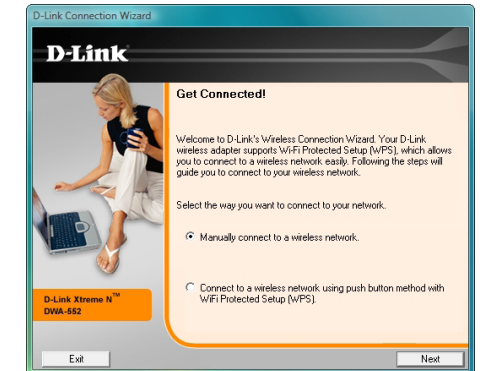
Click **Next**

The drivers will install. This may take 1-2 minutes.



The Wireless Connection Wizard will now appear.

If you want to manually connect to a wireless network, refer to page 15. The following instructions will connect you to a wireless network using Wi-Fi® Protected Setup (WPS).



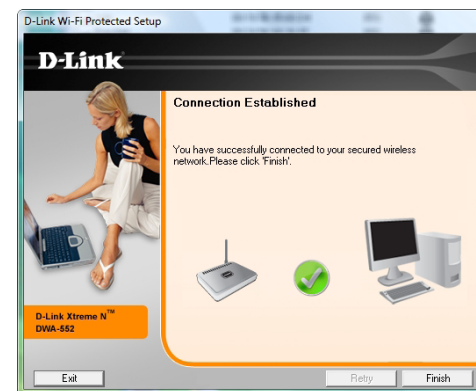
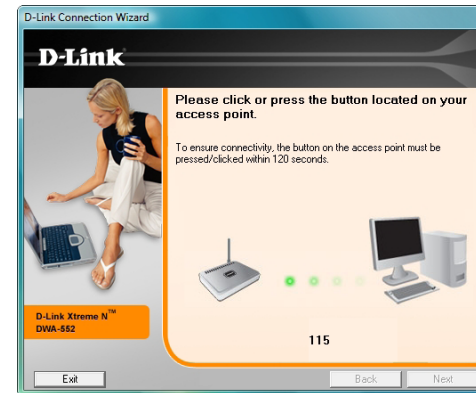
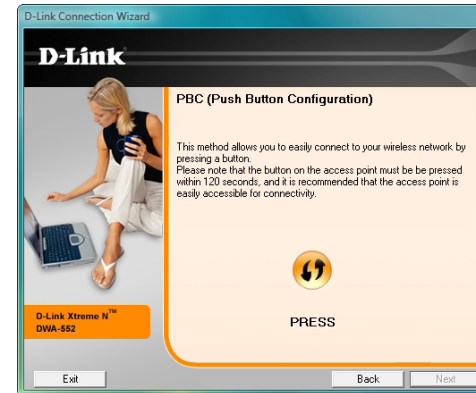
Click **Next**

## Push Button Configuration (PBC)

To connect to your network using the WPS push button configuration method, click the virtual button as shown in the screenshot.

Press the WPS button on your access point or wireless router within 2 minutes to establish connectivity.

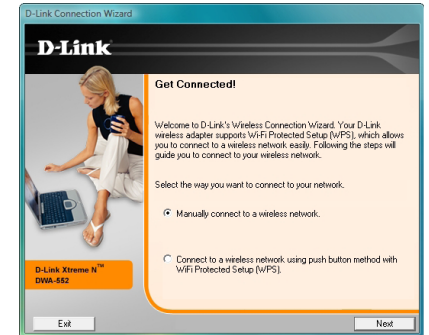
When this screen appears, you have successfully connected to your wireless network. Click **Next** to complete your setup.



Click **Next**

## Manual Connect

To manually connect to your wireless network, select **Manually connect to a wireless network** and then click **Next**.



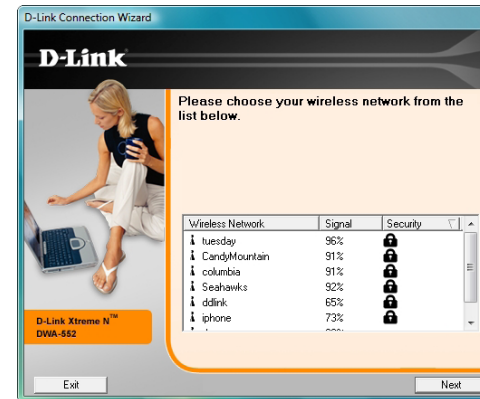
Click **Next**

Enter the network name (SSID) manually. If you enter the SSID incorrectly, you will automatically be brought to the site survey page. Click **Scan** to display the site survey page.



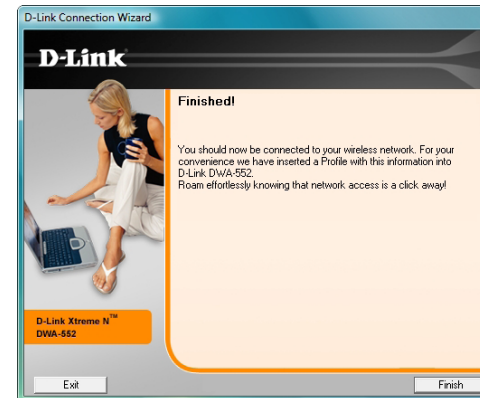
Click **Next**

Click the **Scan** button to display a list of wireless networks (site survey). Click on the network name (SSID) and click **Next**.



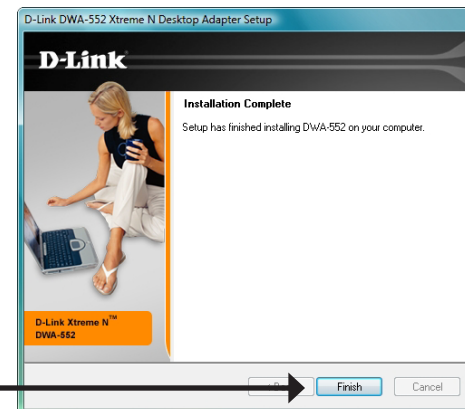
Click **Next**

When this screen appears, you are successfully connected to your wireless network. Click **Finish** to complete your setup.



Click **Finish**

Click **Finish** to continue. If you are prompted to reboot your computer, select **Yes, I want to restart my computer now.**



Click **Finish**



# Configuration

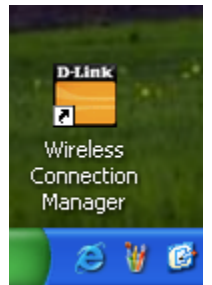
This section will show you how to configure your new D-Link wireless adapter using the D-Link Utility as well as Windows® XP Zero Configuration and Windows Vista® WLAN Auto Configuration.

## D-Link Wireless Connection Manager

The D-Link DWA-552 uses the Wireless Connection Manager as the management software. The manager provides the user an easy interface to change any settings related to the wireless adapter. Clicking on the Wireless Connection Manager icon on the desktop will start the Configuration.

If you are using Windows Vista® please skip to page 27 or Windows® XP skip to page 29.

Double-click the **Wireless Connection Manager** icon on your desktop.



## Wireless Networks

The Wireless Networks (Site Survey) page will display all wireless networks that are available in your area. To connect to a network, simply highlight the wireless network (SSID) and click **Connect**.

**SSID:** The SSID (Service Set Identifier) is the name of the wireless network.

**MAC:** Displays the MAC address of the wireless device.

**Signal:** Displays the Link Quality of the wireless connection.

**Security:** If there is a “lock” icon, this means the wireless network is secure. You must know the encryption key/security settings to connect.

**Channel:** Displays the channel of the wireless network.

**WPS Button:** Connect to a wireless network using Wi-Fi® Protected Setup. Refer to the next page.

**Refresh Button:** Rescans for available wireless networks in your area.

**Connect Button:** Highlight a wireless network and click the **Connect** button. If the network is secure, a pop-up window will appear. Enter the security information to connect (refer to the **Wireless Security** section for more information).

**Activate Button:** Select a wireless network profile from the drop-down menu and click **Activate** to connect. Allow up to 30 seconds to connect.

