

**DOT 320**  
**User's Guide**  
V 1.0 e

# Notices

This document contains proprietary information that is protected by copyright. All rights are reserved. No part of this document may be photocopied, reproduced, adapted, or translated to another language without the prior written consent of D.O.Tel Company.

The information contained in this document is provided "as is" and is subject to change without notice.

D.O.Tel Company makes no warranty of any kind with regard to this User's Guide, including, but not limited to, the implied warranties of merchantability and fitness for a particular purpose.

The Programs that are included in this product are copyrighted and all rights are reserved. Reproduction, adaptation, or translation of those programs without prior written permission of D.O.Tel Company is also prohibited.

Microsoft, ActiveSync., Windows, the windows logo, and the windows CE.NET log are either registered trademarks or trademarks of Microsoft corporation in the United States and/or other countries. Microsoft products are licensed to OEMs by Microsoft Licensing Inc., a wholly owned subsidiary of Microsoft. Corporation.

And, all other brand names used in this documents and product are trade names, service marks, trademarks, or registered trademarks of their respective owners.

D.O.Tel Co., LTD.

Marketing Division

2F, Chunma Bldg., #1, Samsung-Dong Kangnam-Gu, Seoul, Korea 135-863

Tel: 82 2 3438 3636

Fax: 82 2 3438 3637

---



Danger

1. Do not attempt to modify this device in any way. This may result in fire, injury, electric shock or severe damage to you or your device.
2. Do not use this device in close proximity to flammable or explosive gases, as this could increase the risk of explosion.
3. Do not use operate this device with wet hands. This could pose a risk of electric shock to you or your device.
4. Do not leave this device in places subject to extremely high temperatures, such as a sealed vehicle, direct sunlight or other places of extreme variances in temperature. Exposure to extreme temperature may adversely affect the internal components and could cause fire.
5. For safety reasons keep this device out of reach of children or animals to prevent accidents e.g.:
  - a. Swallowing stylus pen.
  - b. There is a risk of permanent eye damage for stylus pen's sharp ends.

In case of accidents, consult a doctor immediately.

6. Use only dedicated battery charger. Other battery charger could result in fire or injury.



Danger

1. Do not use in high temperature and humidity condition. Spilling over this device could result critical trouble to your device.
  2. Avoid strong impulse to this device, such as drop this device from high position. This could cause severe damage to your device. To avoid severe damage, please use this device outside with leather case.
  3. For the first time to use this device, please use after charging battery fully.
-

# Contents

<b>1. Welcome .....</b>	<b>1</b>
What's in the Box .....	2
Using this User's Guide.....	2
<b>2. Introducing DOT 320.....</b>	<b>3</b>
DOT 320 Overviews .....	4
Input Button Functions.....	6
<b>3. Getting Started .....</b>	<b>11</b>
<b>4. Connecting to Desktop PC.....</b>	<b>13</b>
Microsoft ActiveSync .....	14
Connecting DOT 320 .....	23
<b>5. Overview of Microsoft Windows CE.NET.....</b>	<b>27</b>
Main Window .....	28
Taskbar .....	30
<b>6. Setting your DOT 320.....</b>	<b>35</b>
Certificates .....	36
Date/Time .....	37
Dialing.....	39
Display .....	40
Input Panel .....	43
Internet Options .....	44
Network and Dial-up Connections .....	46
Owner .....	49
Password .....	50
PC Connection.....	51
Power .....	52
Regional Settings.....	54
Remove Programs.....	55
Storage Manager .....	56
Stylus .....	57
System .....	58
Volume & Sounds .....	59
<b>7. Using Personal Information Managers.....</b>	<b>61</b>
Today.....	62
Inbox .....	63
Calendar.....	70
Contacts .....	78
Tasks .....	81

---

Notes.....	86
PIMs Backup.....	90
<b>8. Using Application Software .....</b>	<b>91</b>
Calculator.....	91
Viewer.....	92
<b>9. Using Utility Programs.....</b>	<b>93</b>
Backlight.....	94
Buttons.....	95
Contrast.....	96
Menus.....	96
QStart.....	96
Task Manager.....	96
<b>10. Using Microsoft Applications .....</b>	<b>97</b>
Command Prompt.....	97
Microsoft Media Player.....	98
Internet Explorer.....	103
Microsoft WordPad.....	107
Transcriber.....	111
Windows Explorer.....	123
<b>11. Appendix.....</b>	<b>127</b>
Specification.....	127
Troubleshooting.....	128
Glossary.....	138
FCC NOTICE.....	141

---



# 1. Welcome

Congratulations for purchasing D.O.Tel DOT 320, Windows CE.NET Powered Palm-size PC. DOT 320 lets you keep your important business and personal information up-to-date and close at hand.

DOT 320 contains the newest operating system, Windows CE.NET. Windows CE.NET guides you to experience Windows XP skin and function, making your important tasks easy and fast.

Using various applications in DOT 320, you can organize your daily life, enjoy multimedia and games, check your e-mail, and access internet anywhere, anytime.

Microsoft ActiveSync increases the power of DOT 320 by allowing you to synchronize the information on your desktop or laptop computer with DOT 320.

In this chapter, you will find:

- a list of the DOT 320 package contents
- an overview of this User's Guide



## **What's in the Box**

DOT 320 compositions are as follows:

- DOT 320 PDA
- This User's Guide
- USB Cable & Docking Cradle
- Battery Charger
- DOT 320 Bundle CD-Rom with USB driver, User's Guide, and ActiveSync 3.5
- Leather Protector Case & extra one stylus pen

## **Using this User's Guide**

This User's Guide introduces information to use DOT 320 PDA easier and faster for users. The information in this document is subject to change without notice for product improvement or specification change.

---



## 2. Introducing DOT 320

DOT 320 is the Windows CE.NET Operating System (OS) based Personal Digital Assistant (PDA) Device with StrongARM SA1110 processor and 16bit color TFT-LCD display.

“Microsoft Windows Powered Logo” is provided by Microsoft Corporation for the Embedded Systems devices running on a Microsoft Windows operation system. It should follow the Logo Specifications of Microsoft Corporation.

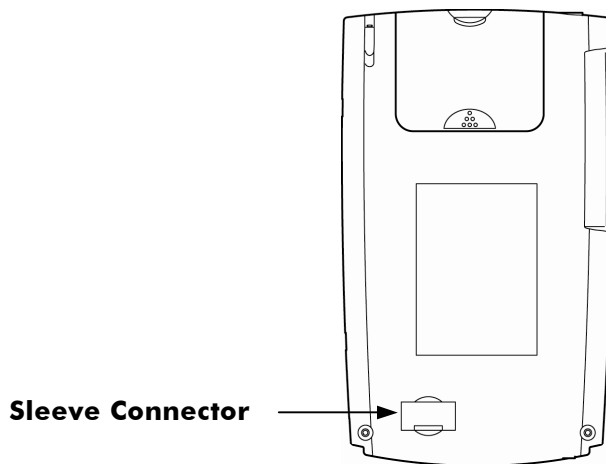
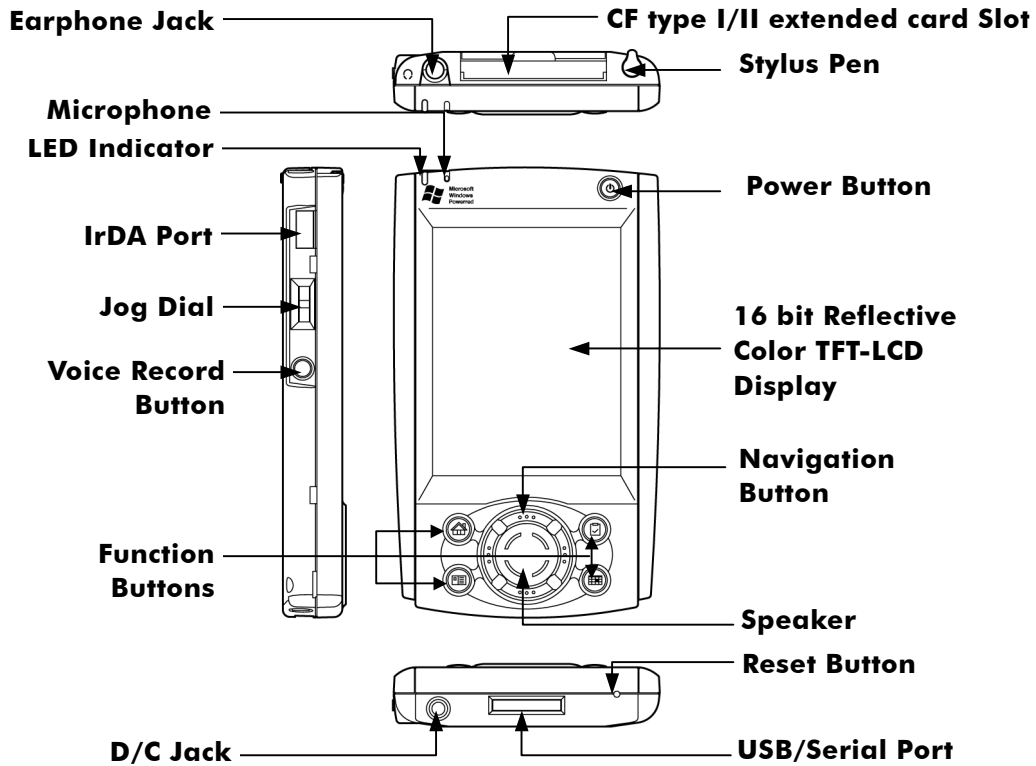
This Chapter will help you to start your DOT 320. You will be introduced to DOT 320 hardware features and hardware input functions. You will also learn how to connect DOT 320 to battery charger and how to use the input button. You will be able to easily and comfortably use your DOT 320.

This chapter will introduce you the following:

- Identify hardware features.
  - Hardware button operations
  - Guide to use DOT 320 for the first time
-

## DOT 320 Overviews

The illustrations below introduce various buttons, ports, and other features of DOT 320:



**CompactFlash Slot:** You can expand the external memory by inserting CF Type I/II Memory Card to CompactFlash Slot. You can also extend application functions by inserting CF Type I/II application module card such as Ethernet, Modem, and Wireless LAN.

**IrDA Port:** Infrared port. Using IrDA port, you can transfer files and data between other devices and DOT 320 without wires or cables.

**USB/Serial Port:** Using USB or Serial port, you can transfer files and data to your Desktop PC. To transfer files and data, you should have the ActiveSync. installed on Desktop PC. You can also connect your DOT 320 to other devices such as Barcode Scanner, GPS, CCD Camera, and Image Scanner using serial port.

**Notification LED:** LED notifies you the status of your DOT 320.

LED Notifications are as follows:

<b>LED Notification</b>	
<b>LED Status</b>	<b>Description</b>
Red Flash	Very low battery
Orange Flash	Charging (while power source is battery charger)
Orange	Full charge (while power source is battery charger)
Green Flash	Alarm
Off	Power On/Off

**Sleeve Connector:** Connector for using communication module like CDMA Communication Module. To add sleeve to your DOT 320, slide up connector to open.



**Warning:**

Current version does not provide this function, so close connector to avoid pollution and electric shock.

---

## Input Button Functions

The following are for DOT 320 Hardware Functional Buttons and other interfaces:

Hardware Input Functions		
Input	Operation	Function
Power Button	Press	Instant device on/off
	Press-and-Hold	Backlight on/off
Jog Dial	Up or Down	Move Up or Down/Volume Up or Down
	Press	Run selected function
Voice Record Button	Press	Run Notes (when Notes is not running)
		Start/Stop Voice Recording (when Notes is running)
Navigation Button	Press	Move Up, Down, Left, Right
Function Buttons	Press or Press-and-Hold	Run the default functions registered Press-and-Hold the Function button runs the alternative function. Every Function button has two different functions, and a user can assign their favorite programs to each Function button.
Reset Button	Click	Software-reset
	Press-and- Hold, plus Click	Hardware-Reset (Press and hold more than 4 seconds, and then click reset button again)

**Power Button:** While you do not have any task with your DOT 320 and intend to save DOT320's power, shortly press the Power Button. DOT 320 shifts to the Sleep Mode and the backlight of LCD is off. Press the power button again to turn DOT 320 back to normal operation mode.

By pressing-and-holding the Power Button, DOT 320 will be turned the backlight of LCD off. Press-and-hold the power button again to turns the backlight of LCD on.

**Voice Record Button:** Shortly press Voice Record Button to run Notes or record voice and sound. Pressing Voice Record Button once will run Notes. To proceed with recording voice or sound, press Voice Record Button again while Notes is running. After record sound or voice, stop record by pressing Voice Record Button again.

When Notes runs, Voice Record Button is used to run or stop recording.

---

**Jog Dial:** The functions of Jog Dial consist of Scroll-up, Scroll-down, and Enter function. You can navigate to one of the icons on windows with Scroll-up/down Button and select the highlighted icon (or item) or rock to the button to scroll-up/down in a document with the Enter Button. You can also control the volume up/down in the Voice recorder and Windows Media Player.

**Navigation Buttons:** The functions of Navigation Buttons insist of Up, Down, Left, Right navigation. You can select icon or item on your windows and navigate document with pressing the Navigation Button.

## Reset Button

**Software Reset:** If you have any problem with your DOT 320 software, click the Reset button on the bottom of your DOT 320. Then you will see the initial display screen. The display screen will display the D.O.Tel Company logo, and after some time, it will display Main windows (If you have set your own password, password input window will be displayed. After you enter the correct password, DOT 320 will display the Main windows). In the Software Reset mode, only current-running programs will close. So you may lose current data or file, but saved data and file will be not affected by software reset.

**Hardware Reset:** When there is a serious problem with DOT 320 which cannot be fixed by software reset, you must restart DOT 320 by hardware reset. Press-and-hold the Reset Button for more than 4 seconds. Then the power supply of DOT 320 will break. And then click Reset Button again, DOT 320 enters Hardware Reset Mode and loads image in Flash ROM to SDRAM. And display D.O.Tel company logo and progress bar. D.O.Tel company logo and progress bar may appear in 4 or 5 seconds. You can check loading status by this progress bar. After loading image, the Main window appears.








### **Warning:**

1. When software reset, clicking Reset Button for more than 1 second can cause Hardware Reset.
  2. In hardware reset mode, you will lose all data, files, programs, and PIMs data created in DOT 320 or transferred from your desktop PC. To avoid data loss from unexpected problems, we recommend you to backup data and files created in DOT 320 to desktop PC, and PIMs data Flash ROM or CF Flash Memory card.
-

## Function Buttons

You can run the program quickly by pressing or pressing-and-holding each function button.

You can assign the programs to each function button. For more information, refer to the **9. Using Utility Programs.**

<b>Function Buttons</b>		
<b>Buttons</b>	<b>Function 1(Press)</b>	<b>Function 2(Press &amp; Hold)</b>
	Today	Inbox
	Contacts	Backlight
	Tasks	Task Manager
	Calendar	PIMs Backup
	Notes	Media Player

---

## Docking Cradle

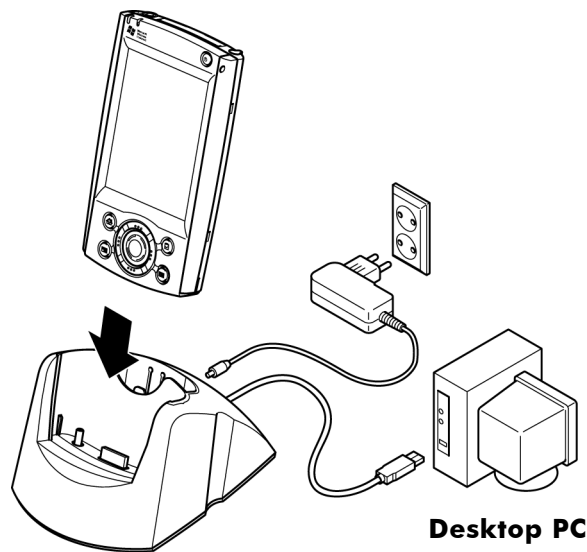
Docking Cradle of DOT 320 provides external power source connection and USB port connection.

When you connect your DOT 320 to docking cradle, follow next steps:

1. Connect Battery charger to docking cradle.
2. Connect battery charger to wall outlet.
3. Connect USB cable of docking cradle to the USB Port of your desktop PC.
4. Insert your DOT 320 to docking cradle.

You can charge your DOT 320 and synchronize with your desktop PC. For detailed information about synchronization with your desktop PC, refer to **4. Connecting to Desktop PC**.

The following illustration shows how to connect your DOT 320 to the docking cradle:





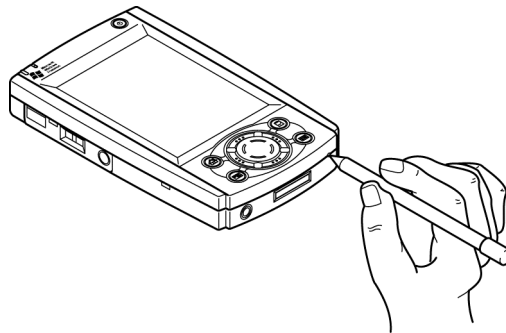


## 3. Getting Started

This chapter indicates how to use DOT 320 for the first time.

You will begin the DOT 320 by the following steps:

1. **Click Reset Button:** When using DOT 320 for the first time after unpacking, battery power is disconnected with DOT 320. Connect the battery power to device by clicking the Reset Button with stylus pen. In 4 or 5 seconds, DOT 320 enters Hardware Reset Mode and loads image in Flash ROM to SDRAM. And display D.O.Tel company logo and progress bar. You can check loading status by this progress bar. After loading image, the Main window appears. Now you can use DOT 320.



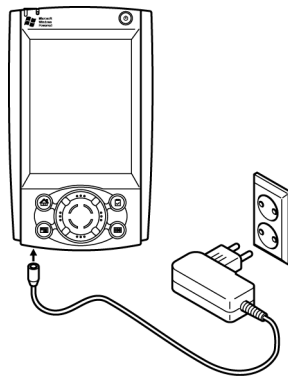
2. **Connect to battery charger:** Connect Battery charger to the DC jack of your DOT 320. For safe use, you must charge DOT 320 more than 3 hours till notification LED color turns to orange before using it for the first time. You can use DOT 320 even when charging.



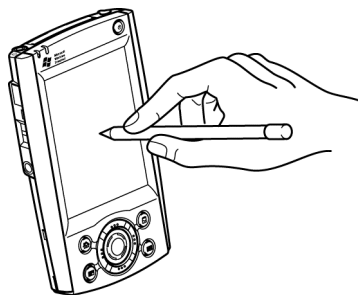
### **Warning:**

You may lose all data and files if it is entirely discharged. Avoid losing data, you must control battery not to discharge. IF Notification LED Blinks red, or Battery very low message appears in display window, charge battery using battery charger before using.

---



- 3. Set up Stylus:** When DOT 320 starts, you will see the Welcome Wizard (Welcome Wizard shows upon hardware reset). The welcome wizard aligns your touch screen. Press the + mark with your stylus pen and hold it until + mark moves to the next position. If you complete all the procedure, DOT 320 will automatically enter the main windows screen. Now, you can work with DOT 320.



- 4. Connect DOT320 to Desktop PC:** If you want to connect to your Desktop and synchronize the files and data, connect the USB connector to your Desktop USB port and install your DOT 320 to the Cradle. After this, run the ActiveSync program on your Desktop PC. For more detailed information, refer **4. Connecting to Desktop PC.**

## 4. Connecting to Desktop PC

For more data and files management, you will want to connect DOT 320 to a desktop PC or a notebook PC. This chapter describes how to connect, synchronize, and transfer data and files between DOT 320 and desktop PC. This Chapter will show you how to:

- Install Microsoft ActiveSync 3.5 on your Desktop PC
  - Connect DOT 320 to PC by USB cable and docking cradle
  - Install USB Driver
  - Establish a partnership between DOT 320 and PC
  - Synchronize data between DOT 320 and PC
  - Browse files on DOT 320 from PC
  - Transfer files between DOT 320 and PC
-

## Microsoft ActiveSync

### Installing the ActiveSync 3.5 on your PC

For synchronization between DOT 320 and your PC, the ActiveSync3.5 must be installed on your PC. Microsoft ActiveSync 3.5 is included on the bundle CD-ROM, which comes with DOT 320. And you can also download it from

<http://www.microsoft.com/mobile/pocketpc/downloads/activesync35.asp>.

Above link to ActiveSync 3.5 can change according to Microsoft. If above link has removed, you can find ActiveSync 3.5 download page from search engine such as Yahoo.

The minimum PC system requirements for the ActiveSync 3.5 are as follows:

- OS: Microsoft Windows XP, Windows 2000, Windows Millennium Edition, Windows NT Workstation 4.0 with SP6 or later, or Windows 98
  - Application: Microsoft Outlook 98 or later required for synchronization to the desktop or portable computer for e-mail, calendar, contacts, tasks, and notes. (Outlook 2002 recommended)
  - Internet Explorer: Microsoft Internet Explorer 4.01 SP1 or later
  - Hard Disk: More than 65 MB of available hard-disk space (actual requirements will vary based on selection of features and user's current system configuration)
  - Communication Port: Available 9 or 25-pin communications port (adaptor required for 25-pin communications port), infrared port, or USB port (available for Windows 98, Windows Me, Windows 2000, and Windows XP only)
  - Graphic Card: VGA graphics card or compatible video graphics adapter at 256 color or later
  - Keyboard
  - Microsoft Mouse or compatible input device
  - CD-ROM drive
-

## Installing USB Driver of DOT 320

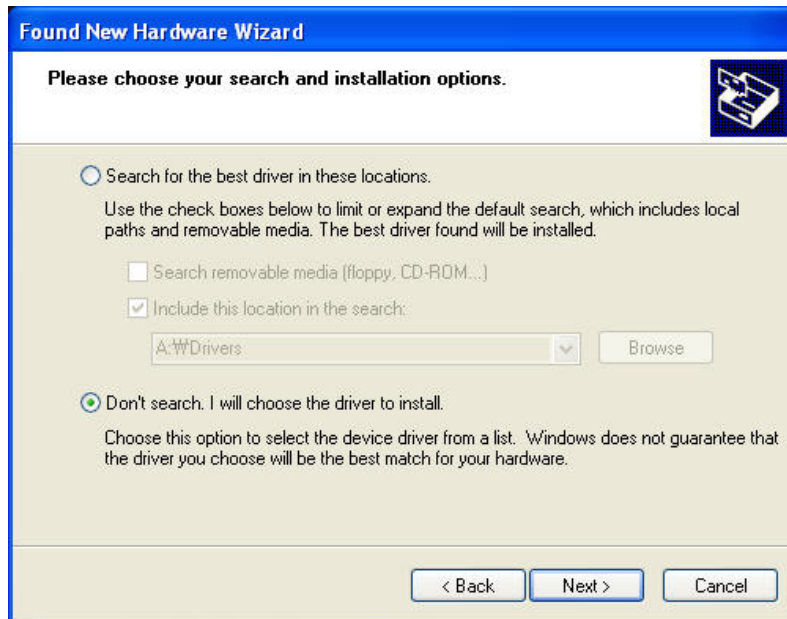
When you connect DOT 320 to cradle for the first time after installing ActiveSync, the Found New Hardware Notification appears. To synchronize normally, you must install proper DOT 320 driver.

To install DOT 320 driver:

1. When connecting your DOT 320 to cradle for the first time after installing ActiveSync, **Found New Hardware Wizard** appears. Check **Install from a list or specific location (Advanced)**, then click **Next**.



2. Choose **Don't search, I will choose the driver to install**, then click **Next**.



3. **Found New Hardware Wizard** shows found hardware. Click **Have Disk**.



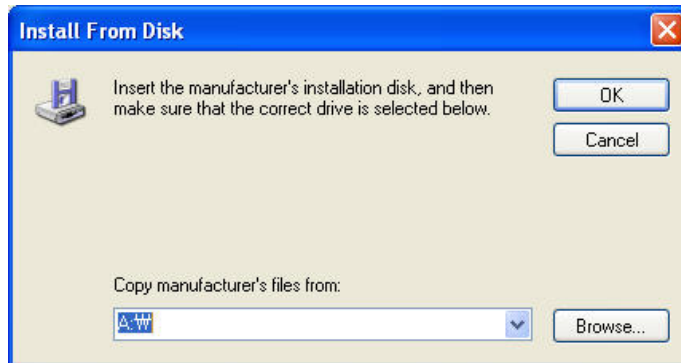
4. **Install From Disk** window appears. Click **Browse** and select folder which contains driver.



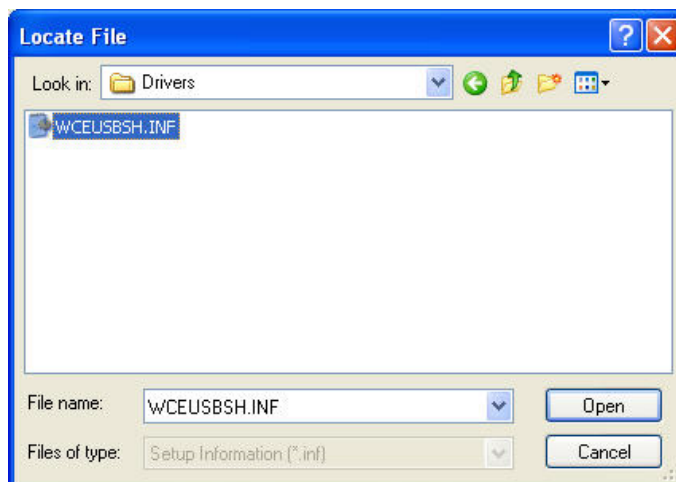
**Note:**

Before proceeding to the next step, make sure your DOT 320 bundle CD-ROM is in your CD drive. The proper driver of Anchor USB EZ-Link Cable for DOT 320 is in Driver folder in bundle CD-ROM.

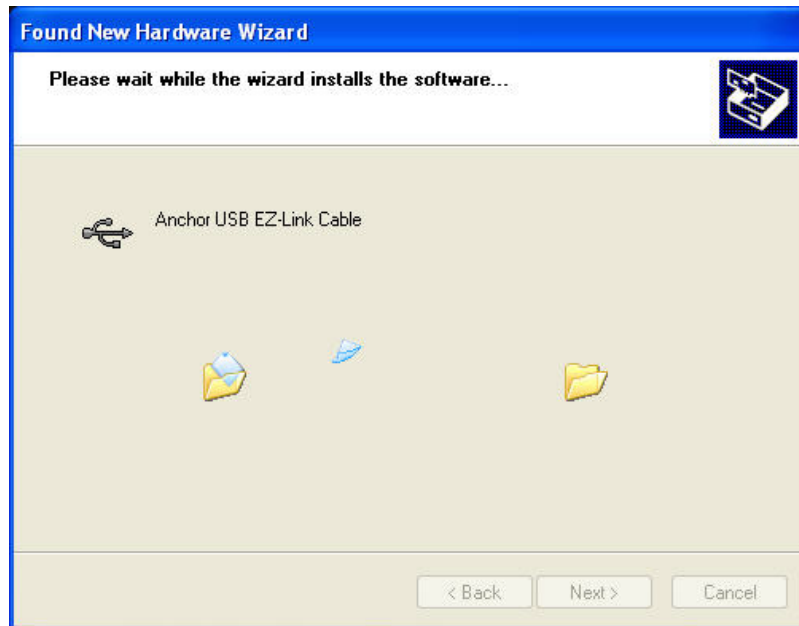
---



5. Select WCEUSBH.INF and click **Open**.



6. Anchor USB EZ-Link Cable driver will be installed in your desktop PC.



7. In installing procedure, you will see the Windows XP compatibility warning message. Click **Continue Anyway**.





8. **Completing the Found New Hardware Wizard** appears. Click **Finish** to complete installation of USB driver.



## Connect to ActiveSync using a cradle with DOT 320

Use a cradle to establish a direct link between your DOT 320 and desktop computer. After creating a partnership, you can connect using a cradle.

The cradle used to connect your DOT 320 to your desktop computer uses a USB cable.

The following table shows available communication device (USB, Serial, and Infrared) according to OS.

<b>Support OS</b>				
<b>Connection</b>	<b>Desktop PC operating system</b>			
<b>Method</b>	<b>Windows 95</b>	<b>Windows 98</b>	<b>Windows 2000</b>	<b>Windows NT</b>
USB	No	Yes	Yes	No
Serial	Yes	Yes	Yes	Yes
Infrared	Yes	Yes	Yes	No

To use a cradle, connect using a cradle between desktop PC and DOT 320 by following these steps:

1. Connect the DC plug from battery charger to the DC jack on the cradle, and plug the battery charger into a wall outlet.
  2. Connect the USB cable from the cradle to a USB port on your desktop PC.
  3. Slide your DOT 320 into the cradle. DOT 320 should start automatically and establish a connection to the desktop PC using Microsoft ActiveSync.
-

## Set up a partnership

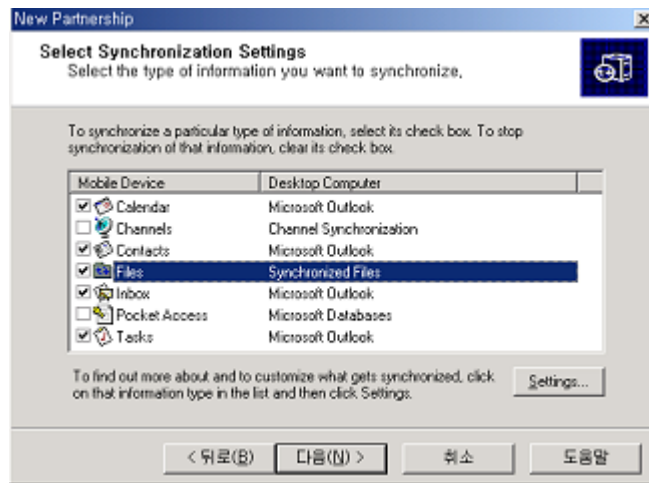
The first time you connect your DOT 320 to your desktop computer, Microsoft ActiveSync asks to set up a partnership. The partnership allows you to synchronize data with your DOT 320. Though your DOT 320 can have partnerships with two desktop computers, e-mail messages can be synchronized with only one desktop computer.

To set up a partnership:

1. Connect your mobile device to your desktop computer. The **New Partnership** wizard starts automatically.



2. Enter the device name and click **Next**.
3. If your DOT 320 already has a partnership with another desktop computer and you no longer want to use it, select **Yes, I want to synchronize with only this computer** in the Select Number of Partnerships dialog box. The other partnership will be removed from your device, and the former desktop computer will no longer be recognized with this device.
4. Select synchronization settings. If you want to synchronize a particular type of information, select its check box and click **Next**.



5. Click **Finish** to complete setup

Upon completing setup a partnership between desktop PC and your DOT 320, ActiveSync will synchronize the selected information automatically.

## Connecting DOT 320

### Synchronizing the data

Synchronization is started in one of three ways, depending on the synchronization mode you have selected.

“Continuously while the device is connected” is the default synchronization mode.

Synchronizing ways are:

- a. **Continuously while the device is connected:** To synchronize with this mode, just connect your DOT 320 to your desktop computer. ActiveSync will immediately synchronize and will continue to synchronize whenever you make a change on either computer or DOT 320.
- b. **Only upon connection:** To synchronize while in this mode, connect your DOT 320 to your desktop computer. ActiveSync will immediately synchronize. To synchronize after the first synchronization manually, click Sync.
- c. **Manually:** In this mode, ActiveSync does not do anything automatically. To synchronize while in this mode, click Sync.

Synchronization compares the data on your DOT 320 with the data on your desktop PC and updates both computers with the most recent information. You can synchronize any files on your DOT 320 with the corresponding files on your desktop PC such as PIMs Data and e-mail messages.

### Resolving synchronization conflicts

If a problem or conflict occurs during synchronization, it will be marked as unresolved in ActiveSync and on your DOT 320. You can resolve items at your convenience.

ActiveSync may not be able to synchronize an item for many different reasons. For example, if you are trying to access your Microsoft Outlook information and the server you are trying to connect to is unavailable, ActiveSync will not be able to synchronize your Calendar, Contacts, Tasks, or Inbox items. Or a conflict could occur because an item has been changed on both your DOT 320 and your desktop computer.

You can modify your conflict resolution settings so that ActiveSync does not register conflicts as unresolved items. Instead, you select the DOT 320 or desktop PC as the default version, and ActiveSync will automatically replace the information on the other computer.

---

To avoid resolving conflicts manually, you can set your conflict resolution settings so that ActiveSync always uses the version on your DOT 320 or desktop computer.

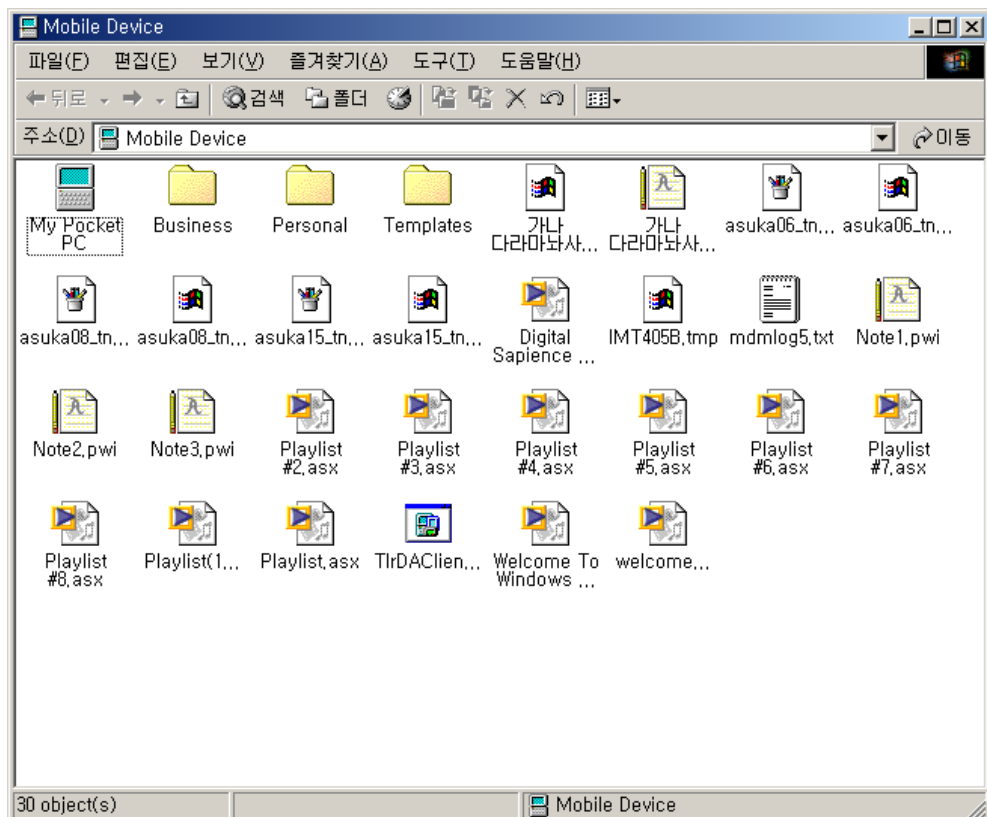
1. Click Options and then click the Rules tab.
2. Under Conflict Resolution, select a setting.

During synchronization, items that cannot be synchronized without your assistance are marked as unresolved items in ActiveSync and on your mobile device.

1. Connect your DOT 320 to your desktop computer and synchronize.
2. If you have unresolved items, on the Tools menu, click Resolve items.
3. Follow the directions on the screen. Dialog boxes presented to resolve items differ, depending on the reason why the item could not be synchronized.

## Browsing DOT 320 contents from desktop PC

While DOT 320 is connected to a desktop PC, you can use ActiveSync to browse the contents of your DOT 320 from desktop PC. In ActiveSync, click Explorer on the File menu. You will see the contents of DOT 320 in the Mobile Device window.



Using ActiveSync, you can view the files on your mobile device by following these steps.

1. Connect your DOT 320 to your desktop computer.
2. In ActiveSync, click Explore. Windows Explorer will open the Mobile Devices folder.
3. In Windows Explorer, browse the files on your device as you would in any Explorer window.

When you double-click a folder in the Mobile Devices folder, it may take a few seconds for the folder to open.

While browsing, you can cut, paste, and copy files and data by simply dragging the file icons to folders.

In your desktop PC, you can access to DOT 320 contents using window explorer. When you select Files when setting up a partnership, WindowsCE My Documents appears in your my Documents folder. You can easily access My Documents in your DOT 320 using WindowsCE My Documents folder in your desktop PC.

---





## **5. Overview of Microsoft Windows CE.NET**

This Chapter will help you familiarize with the Microsoft Windows CE.NET, the operating system of DOT 320.

This chapter will introduce aspects of Microsoft Windows CE.NET such as:

- Using the main window
- Using Navigation Bar Control
- Using the Settings



## Main Window

After Turning the DOT 320 on, you will first see the Windows CE.NET main window, which looks like Windows XP. This Main Window consists of the Main Screen and the Navigation Bar.



You can use Right-Mouse-Click Function of Desktop PC in DOT 320. Tab and hold LCD touch panel by Stylus Pen until the R-Button Menu appears.

You can arrange and line up icons, refresh desktop, copy/cut/paste files and data, create new folder, and set properties by R-Button Menu.

You can see the shortcuts of main programs of Microsoft Windows CE.NET.



**My Computer:** showing your DOT 320 structure

You can see folders and files in your DOT 320.



**Recycle Bin:** Deleting completely or restoring deleted files and data

This folder stores the files you have deleted from Windows Explorer or Desktop. You can completely delete or restore files and data in recycle bin.



**Note:**

You cannot restore files and data in recycle bin after emptying recycle bin.

---

**Internet Explorer:** Browsing the Web or Intranet appliances

Microsoft Internet Explorer helps you browsing the Internet or a corporate intranet. DOT 320 uses Microsoft Internet Explorer 5.5.

**Media Player:** Playing the digital audio and video files.

Using Microsoft Windows Media Player, you can enjoy digital audio/video files. Media player support the files in the following formats: ASF, WMA, MP3, WAV, etc. For more information about Media Player, refer to **10. Using Microsoft Applications**.

**Microsoft WordPad:** Creating and managing documents

Microsoft WordPad can work with Microsoft Word on your desktop PC to give you easy access to copies of your documents. For more information about Microsoft WordPad, refer to **10. Using Microsoft Applications**.

**My Documents:** Saving and viewing your programs, files, and data

You will create your own files using various applications, and save these to My Document. Also, you can read and modify these files and data on My Documents folder.

**Transcriber:** Recognition of your handwriting input characters

As an alternative or companion to a keyboard, you can input handwriting characters using Transcriber. Upon Tapping Transcriber, a Transcriber Help window appears. After closing the transcriber help window by tapping OK button, you can input your handwriting character on your documents or in your application programs. For more information about transcriber, refer to **10. Using Microsoft Applications**.

**Remote Desktop Connection:** controlling remote system on your DOT 320

Using Remote Desktop Connection, you can connect to any system which supports Remote Desktop such as Windows 2000 Server, Windows 2000 Advanced Server, and Windows XP. This program will not be included DOT 320 software, but will be offered with DOT 320 Bundle CD-ROM.

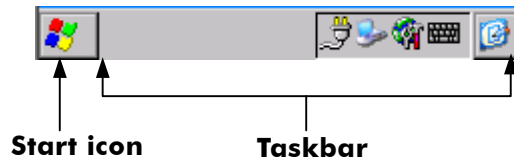


**Messenger:** staying in touch with your friends Windows Messenger for CE helps you stay in touch with your friends online. You can send or receive messages with your messenger friends and organize your contact list. This program is like Windows Messenger in your desktop PC. This program will not be included DOT 320 Software, but will be offered with DOT 320 Bundle CD-ROM.

---

## Taskbar

The Taskbar of Windows CE.NET makes it more powerful and easy to use. The Taskbar consists of:



### Start Icon

Start Icon is the starting point of DOT 320 applications.

Upon Tapping the Start Menu, you will see the Programs, Favorites, Documents, Settings, Help, and Run. You can directly execute the programs of your DOT 320.

Start Icon of Windows CE.NET is the same as the Start button on your desktop PC Windows.



## Taskbar

The Taskbar shows status including Input method, battery and connection, and running programs.

In the Taskbar area, you can see the keyboard icon. If you want to input character, tap the keyboard icon and click the character you want to input.

You can also see status icons such as Power Icon, Desktop Icon, and Quick Link Icon. Some applications make corresponding icons on tray.

You can change taskbar and Start Menu Property by taping and holding the stylus pen on the task bar.

When you Tap and hold Taskbar by stylus pen, R-Button Function Menu appears. R-Button function menu consists of Task Manager and Properties.

For more information on Task Manager, refer to **9. Using Utility Programs**.

You can set general appearance options of taskbar and clear Documents history.



### **Soft Keyboard:**

When DOT 320 starts, you can see soft keyboard icon on taskbar. Tap soft keyboard icon, then soft keyboard appears. You can input characters, numbers, and symbols by tapping proper key on soft keyboard.

Functions of the soft keyboard are as following:



### **Select Capital/Small Letter:**

Tab this icon to change capital/small letter. When capital is selected, capital letters and symbols appear on number keypad. It does the same as the Shift key.



### **Select Symbols:**

Tab this icon to select symbols. When combined with the Cap icon, you can input capital symbols.



### **Select Shortcut:**

You can Undo, Cut, Copy, and Paste mix-use with "z", "x", "c", and "v".

You can combine a function key with other function keys. For example, you can input capital symbols by tapping CAP and áü.

---

To change the soft keyboard property, Select Start > Settings > Control Panel > Input Panel.

**Quick Link:**

Tap Quick Link icon in Taskbar, then Program link menu appears. You can launch programs which are used most often by using quick link. This menu consists of Rotation, IR Send\_Receive, Contrast Control, Backlight Control, Task Manager, Keyboard, and Touch Setting.

Rotation: Change display window direction. Using rotation, you can view DOT 320 display window more conveniently.

To rotation display window:

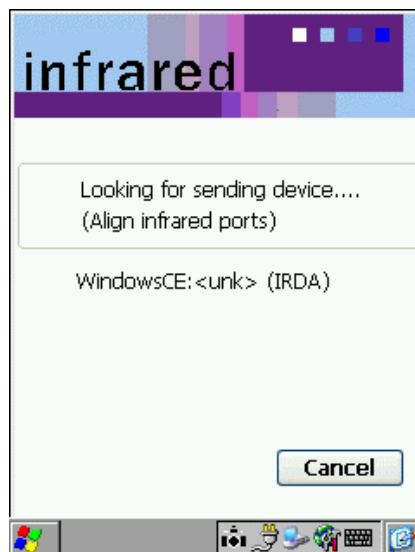
1. Tap Quick Link and select Rotation.
2. Run application. You can use rotation in My Computer, Media Player, My Document, Internet Explorer, Microsoft WordPad, Viewer, and PIMs.

**Note:**

1. In display rotation mode, only software keyboard can be used to input characters.
  2. Rotate window under running any application provides rotation, application may appear not to fit window.
- 

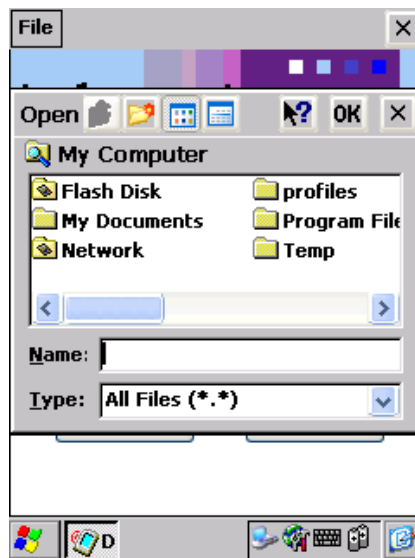
IR Send\_Receive: Run Infrared Communication using OBEX (Object Exchange Protocol). OBEX feature for Microsoft Windows CE.NET provides an efficient, compact binary protocol that enables a wide range of devices to exchange data spontaneously in a simple, efficient way. This feature works over Infrared Data Association (IrDA) protocols.

DOT 320 can communicate with Desktop, Notebook, Pocket PC, and other PDA which has OBEX protocol for IrDA communication.










To use IR Send\_Receive, follow below steps:

1. Connect IrDA Port of DOT 320 to the other device with serial port.
2. Tap Quick Link Icon.
3. Connection Status dialog box appears. In above example, DOT 320 linked with Pocket PC.
4. Tap Send icon to transfer Files or Data.
5. File Browsing window appears. Select a file to transfer, then tap OK.



1. Click Send. At The bottom on IrDA Window, File/Data Sending message appears. "Completed sending File Message" appears when transfer completes.
  2. When transferring files or data from other device to DOT 320, Receiving Status Message appears. Received file is saved in \My Computer\Received Files directory.
  3. Close IR Send\_Receive by tapping Disconnect icon after completing IrDA communication.
-

The following icons can appear in the status area of DOT320 taskbar.

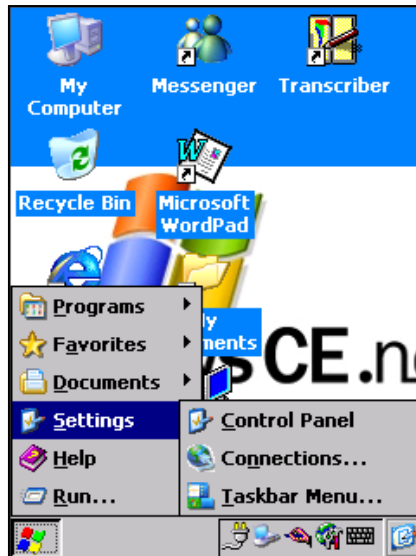
<b>Status Icons on Taskbar</b>	
<b>ICON</b>	<b>Description</b>
	Battery capacity is critical level
	Battery capacity is low
	Battery capacity is very low
	External (AC) power source is connected
	Connected to Desktop PC by USB
	Quick Link Icon
	Show Network connection status

---



## 6. Setting your DOT 320

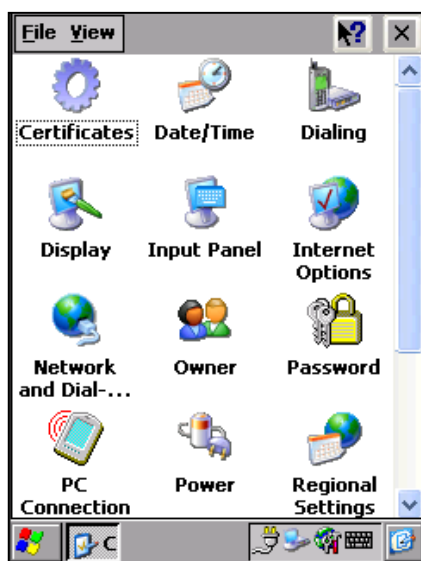
You can set up your DOT 320 in Control Panel.



Tap Setting > Control Panel, then Control Panel window appears.

You can change view mode - Large Icon, Small Icon, and Details- You can also arrange icons in the View menu.

Control Panel is as follows:



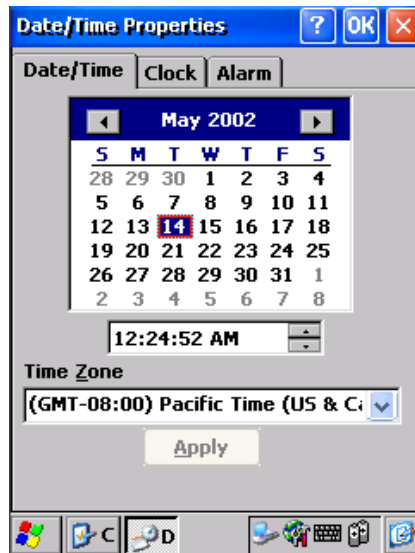
## Certificates

Certificates is used by some applications for establishing trust and for secure communications. Certificates is signed and issued by certificate authorities and are valid for a prescribed period of time. Windows CE.NET manages multiple certificate stores.

1. Select Start > Settings > Control Panel.
2. Open the Certificates.
3. In the Stores tab, select the certificate store to view or modify by the drop-down list.  
My Certificates: contains your personal certificates to identify yourself.  
Other Authorities: intermediate certificate authorities that help establish a chain of trust.  
Trusted Authorities: lists the top-level certificates for authorities.
4. To add a certificate or associated private key to the selected store, tap Import and select the way to import certificate or key. You can select from file or from a smart card.
5. To view more details of the selected certificate such as the expanded name or expiration date, tap View.
6. To delete the selected certificate from the store, tap Remove.

## Date/Time

You can set the date, time, time zone, clock, and alarm.



### Date/Time

You can set Region, Year, Month, Day, and Time.

1. Select the year and month from the calendar. You can select the year and month using the arrows on either side of the month or the month label shown upon tapping month.
2. Select the date from the calendar.
3. Set the time by entering in the Current Time box.
4. Select your location from the Time Zone drop-down list.
5. Tap Apply to save changes.

### Clock

You can set the time of Home and Visiting.

1. Choose Home or Visiting.
2. Set Region by drop-down list.
3. Set year, month, and day from the calendar
4. Set time.
5. Tap Apply.

## **Alarm**

You can set alarm using Alarm program. DOT 320 Alarm has four alarm event separated with Reminder of Calendar and Task. You can set day and time for each alarm event. You can set alarm following these steps:

1. Check an event to use alarm. You can use four alarms.
  2. Enter the name or description of each alarm.
  3. Check the day check box which is occur alarm.
  4. Set time in time box.
  5. Tap speaker icon for setting options, then Notification window appears.
  6. Check notifications: Sound, Message, and Flashing light. You can use window default sound for alarm.
  7. Tap Save to save set alarm.
-

## Dialing

You can set Dialing Properties for Dialup Modem.

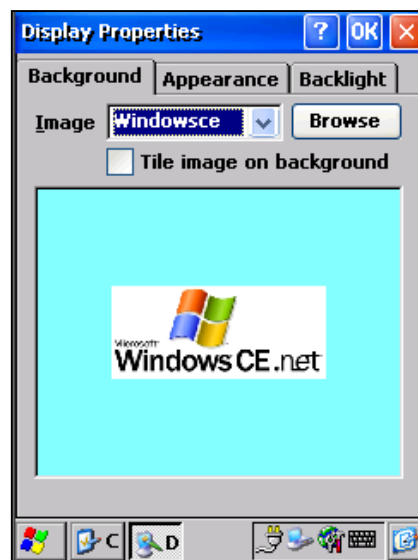


1. Set Location (home/work). You can add new location or remove current location by tapping New or Remove.
2. Enter Area Code and country/Region code.
3. Select dialing method. You can choose Tone dialing or Pulse dialing.
4. Check "Disable call waiting" and select dial not to use call waiting.
5. Dialing patterns are box shows dialing patterns you set.
6. Tap Edit to edit Dialing Pattern. Enter local, long distance, and international call patterns.
7. Tap OK.

## Display

You can set a background image, change the desktop's color scheme, and change backlighting settings.

You can enter Display Properties window by selecting Properties in R-Button menu from desktop.



## Background

You can change the background image on desktop.

1. Select the Background tab.
2. From the Image list, select an image to set the background of the desktop. Image list shows the image files in Windows folder. Click Browse to use images in other folders.
3. To set tile image on the background, check image on the background.

## Appearance

You can change the color scheme of the desktop. You can customize your DOT 320 window to be to your taste and save appearance.

To change scheme:

1. Select the Appearance tab.
2. From the Scheme list, select a scheme.
3. You can see the selected scheme in the Preview box.
4. Tap Apply to use the selected scheme.

To create a custom color scheme or change the color of each item:

1. Select the Appearance tab.
  2. From the Item list, select a display item. You can select the item by tapping appropriate item in the preview box.
  3. Tap color box next to Item list. Color window appears.
  4. From the Basic colors list, select a color and tap OK.
  5. Changed color appears in the preview box.
  6. To save the scheme, tap Save and enter a name for the scheme.
  7. You can delete existing scheme by tapping Delete.
  8. Tap Apply.
-

## **Backlight**

You can change backlight control settings. To conserve battery power and screen resolution, turn off the backlight when the device is idle.

1. Select Backlight tab.
2. Select one or both of the check boxes to turn the backlight off when using batteries or external power.
3. From the appropriate list, select the length of time the device should be idle before the backlight is turned off.
4. To turn on backlight automatically when any key is pressed or touch screen is tapped, tap Advanced and check appropriate check box.



## Input Panel

You can set the input method.

1. Select the input method to use from Current input method drop-down list. The Current input method shows available input methods.
  2. Tap Options. Then Soft Keyboard Options window appears.
  3. Select keyboard key size. You can select large keys or small keys.
  4. Check Use gestures for Space, Backspace, Shift and Enter to use gestures.
  5. Tap OK to save changes.
-

## Internet Options

You can set your Internet Explorer Options.



### General

You can set general options.

1. Enter the default page when Internet Explore runs in Start Page box.
2. Enter the default search engine for search function of internet explore in Search Page box.
3. Set cache size.
4. Tap Clear Cache to delete cache in your system.
5. Tap Clear History to delete web history.

### Connection

You can set connection options.

1. Check Use LAN to use LAN for internet connection. You cannot use autodial when selecting this option.
  2. Select the ID for autodial.
  3. Check Access the Internet using a proxy server if you want to use proxy server, then enter proxy address and port.
  4. Check Bypass proxy server for local address if you want to bypass proxy server when accessing a local address. This option is available when you use proxy server.
-

## Security

You can set security options.

1. Check Allow cookies to enable cookie.
2. Check proper security option: TLS 1.0, SSL 2.0, and SSL 3.0.
3. Check Warn when switching across secure and insecure areas. Internet explore warns you when you enter the insecure page if this option checked.

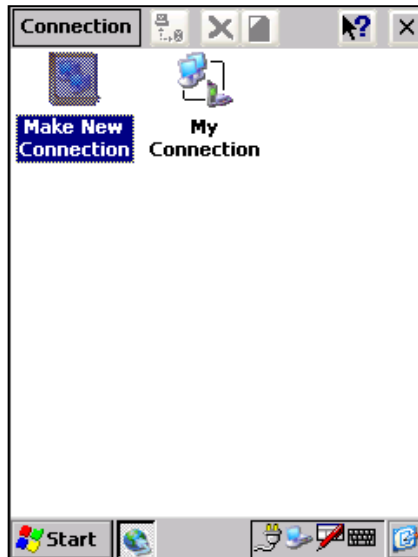
## Advanced

You can set advanced options.

1. Check Display images to show images in web pages.
  2. Check Play sounds to play sounds in web pages. You can access faster if you turn off these two options.
  3. Check Enable scripting to use script automatically.
  4. Check Display a notification about every script error to show a notification message for every script error.
  5. Select underline way for links: Never, Always, and Hover.
-

## Network and Dial-up Connections

You can connect directly to a network through a network (Ethernet) or dial-up (Modem) connection. You can access your e-mail, access files available on the network server, and browse the Internet or an intranet.



### Create a New Connection on your DOT 320

You must create a connection for each computer or network that you want to access remotely unless you are using an Ethernet card.

1. Select Start > Settings > Control Panel > Network and run dialup connections or select Start > Settings > Connections.
  2. Double-tap the Make New Connection icon.
  3. In the Make New Connection dialog box, enter a name for the connection.
  4. Select Dial-Up Connection and tap Next.
  5. Select the modem to use and tap Configure.
  6. Under Connection Preferences, use the default settings provided. If you can't connect using these settings, see your ISP or network administrator for specific information. If you want to always enter a phone number before connecting, select Manual Dial. Select OK.
  7. Select TCP/IP Settings. In the General tab, make sure Use Server-assigned IP address is selected. In the Name Servers tab, make sure Use Server-assigned addresses is selected, and select OK. If you are unable to connect with these default settings, see your ISP or network administrator for specific TCP/IP information.
-

8. Tap Next and type in Country/Region code, Area Code, and telephone number.
9. Tap the Finish button.

The connection you just created appears as an icon in the Remote Networking folder.

**Notes:**

The connection appears as an icon on the Connections screen.

---

If you are creating a PC modem connection for an external modem, select Hayes Compatible on COM1 as your modem. When connecting your device to your PC using an external modem, use the modem cable or adapter provided by the manufacturer of your modem.

## Create an Ethernet Connection

To make a network with an Ethernet card, you must have a NE2000/NE2001-compatible Ethernet card.

1. Insert the Ethernet card to a CF type slot
2. The NE2000 Compatible Ethernet Driver Settings window appears. Select Obtain an IP address via DHCP, then tap OK.
3. Select Start > Settings > Control Panel. Open the Network icon.
4. In the Adapters tab, select NE2000 compatible Ethernet driver.
5. Select the Identification tab. Enter the User Name, Password, and Domain name you use to log on to your PC.

## Create a Dial-up Network Connection

1. Ask your network administrator to create a RAS account. Once the account is set up, obtain the following information: dial-up phone number, password, and computer name.
  2. Make a new connection on your DOT 320. You should be able to use the default TCP/IP settings provided in the Make New Connection Wizard. If you can't connect using these default settings, contact your network administrator for specific TCP/IP information.
-

## **Connect to an ISP**

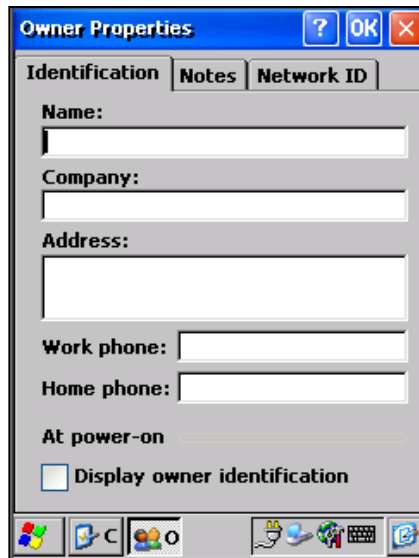
1. Connect your device's modem to a phone line.
2. Select Start > Settings > Connections
3. Double-tap the connection you have created for the ISP.

## **Direct Connection to a Desktop PC**

1. Double tap Make New Connection.
  2. Enter connection name.
  3. Select direct connection.
  4. Select a device you want to connect.
  5. Tap Configure.
  6. Set device properties as Dialup connection.
-

## Owner

You can set to display owner information when DOT 320 starts, add more information about the owner, and set for network ID



### Identification

You can set name, company, address, work phone, and home phone in Identification tab.

Enter name, company, address, work phone, and home phone of owner.

To display owner's identification, check Display owner identification.

---

#### Notes:

You can add notes for more information about the owner.

---

### Notes

Enter notes in Notes box.

To display notes, check Display owner notes.

### Network ID

Windows CE.NET uses owner's information to gain access to network resource.

Enter User name, Password, and Domain.

---

## Password

You can set the password for protecting and securing your DOT 320 from other users.

To set and use a password:

1. Select Start > Settings > Control Panel.
2. Open the Password icon.
3. In the Password box, enter the password.
4. In the Confirm Password box, enter the password again.
5. To use protection on start-up, check Enable password protection at power-on.
6. To use protection on screensaver, check Enable password protection for screensaver.

If you forget your password when you checked enable password, you must perform a hardware reset. Performing a hardware reset erases all files and data you have created, and all programs installed.

You may keep valuable data, such as names and phone numbers of contacts, credit card numbers, and confidential documents on your device. To protect your important information, you can do as following:

### Use a password

You can set a password needed to access your DOT 320. Select Start > Settings > Control Panel and open the Password icon.

Set a password easy to remember. If you forget it, you must perform a hardware reset to use your device again. A hardware reset will erase all of your data and programs.

---



## PC Connection

You can set PC connection to synchronize with your desktop PC or other device.

The baud rate on your device must match the baud rate on your PC. If you change the baud rate on one computer, you must change it on the other.

1. Select Start > Settings > Control Panel.
2. Open the PC connection icon.
3. Make sure "Allow connection with desktop computer when device is attached" is selected.
4. Tap Change Connection.
5. Select a desired connection.
6. To add a new connection, refer to **4. Connecting to Desktop PC**.

**Note:**

To connect your DOT 320 with desktop PC, Microsoft ActiveSync 3.5 must be installed on your desktop.

---

DOT 320 provides USB@DOT320 connection Item. To synchronize using IrDA or serial Port, use this setting.

---

## Power

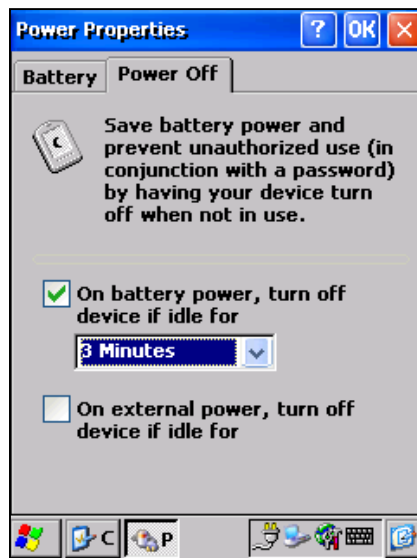
You can check status of battery of your DOT 320 and set your DOT 320 to turn off when idle and suspend operation.

## Battery

You can check the status of battery of your DOT 320.

1. Select Start > Settings > Control Panel.
2. Open the Power icon, and then select the Battery tab. The Battery tab provides general information on battery conditions.
3. There are three conditions:
  - Good: Enough battery power.
  - Low: Low battery power. Recommended to charge your battery.
  - Very Low: Very low battery power. Recommended to turn off and to charge your DOT 320 not to lose important data.

## Power Off



You can save battery power and prevent unauthorized use by having turn off your DOT 320. To turn your DOT 320 off automatically when idle:

1. Select Start > Settings > Control Panel.
  2. Open the Power icon, and then select the Power Off tab.
-

3. Check On battery power, turn off device if idle for and idle time to turn off your DOT 320 on battery power.
4. Check On external power, turn off device if idle for and idle time to turn off your DOT 320 on external power.

## Optimize battery life

You want your batteries to last as long as possible, especially when you're out of office or home. Here are a few tips to help you get the most from them.

### A. Use external power whenever possible

Use the battery charger to plug your device into external power whenever possible, especially when:

- Establishing a dial-up connection (some modems use a lot of power).
- Using the backlight feature of your device display (if it has one).
- Connecting to a desktop computer.
- Using a compactflash card or other peripheral.
- Letting the LED indicator flash for extended time periods.

### B. Set device to turn off when idle.

While on battery power, your device automatically turns off, or suspends operation, if you haven't touched the keyboard or used the stylus or mouse for more than three minutes. Maximize battery life by shortening this time.

### C. Turn off sounds you don't need.

By default, the device produces sounds in response to a number of events, such as warnings, appointments, and hardware-button presses. To optimize battery life, turn off any sound you don't need. Select Start > Settings > Control Panel, and then Volume & Sounds.

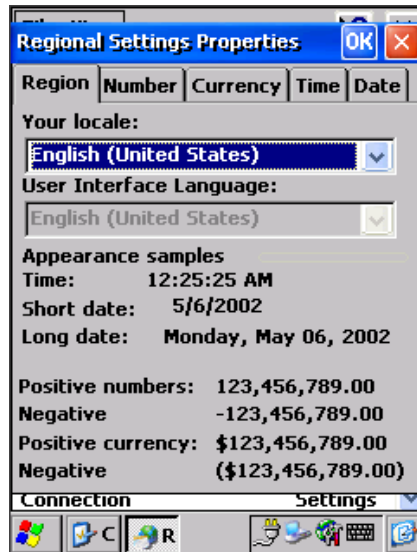


#### **Warning:**

When batteries are very low, you will see a Very Low Alarm dialog in the taskbar and main windows. In this case, you must charge DOT 320 using battery charger. If not, a system fault may occur.

---

## Regional Settings



You can set region, number, currency, time and date.

1. Select Start > Settings > Control Panel.
2. Open the Regional Settings icon.
3. Select the tab for the type of information you want to change.
4. Select desired options. The characteristics available are determined by the region selected on the Region tab.

## Remove Programs

You can remove installed programs.

1. Select Start > Settings > Control Panel.
2. Open the Remove Programs icon.
3. From the Programs list, select the program you want to remove.
4. Tap Remove.



**Note:**

You can only remove programs that you have installed in RAM.

If you are unable to remove a program, see Windows CE Help on your device or the program's documentation for more information.

---

## Storage Manager



You can manage Flash ROM (Disk1) and CF Memory (Disk 2) using Storage Manager. You can make/delete partition and format disk. In default, Disk 1 and disk 2(if CF memory card is added in CF extended memory card slot.) is mounted.

1. Select built-in Disk 1 or Disk 2 from Store Info drop-down list.
2. If you want to format the partition of selected Disk. Tap Dismount Icon and tap the Format icon. At the Partitions list, partition name is disappeared.
3. Tap the New icon, and Enter new partition name. Then, new partition will be created and mounted automatically.
4. If you want to delete partition, Select a partition want to delete, tap dismount icon, and tap delete.
5. If you want to view the properties of selected partition, Tap Properties Icon.
7. You can backup PIMs data in mounted partition. For more information about PIMs backup, refer to **7. Using Personal Information Manager**.

**Warning:**

You will lose all data, files, and programs after disk format.

---

## Stylus

You can set the sensitivity of LCD screen.

## Double-Tap

You can set and check the sensitivity of double-tapping.

To set the double-tap sensitivity:

1. Select Start > Settings > Control Panel.
2. Run Stylus and select Double-tap tab.
3. Double-tap the grid. The color of grid will change.

To test the double-tap sensitivity:

1. Select Start > Settings > Control Panel.
2. Run Stylus and select Double-tap tab.
3. Double-tap the icon below. The icon will change.
4. If the icon doesn't change, adjust your setting using the grid above.

## Calibration

If your DOT 320 is not responding properly to your taps, recalibrate your screen using Recalibrate.

To start the recalibrate:

1. Select Start > Settings > Control Panel.
  2. Run Stylus and select Calibration tab.
  3. Tap Recalibrate, then the calibrate process starts.
-

## System

System properties window shows the information of your DOT 320.

You can see the information of your DOT 320, device name, and copyrights.



The memory of DOT 320 is used for data storage and for programs. Default memory of DOT 320 is 32MB.

And you can set the size of your memory to run program or to store data.

To set memory:

1. Select Start > Settings > Control Panel.
2. Run System program and select Memory tab.
3. The blue portion of the slider bar shows available memory.
4. Move slider. The left side of the slider is storage memory and the right side of the slider is program memory.
5. With more storage memory, you can store more data and files. With more program memory, there will be less program problems.

Device name is the partnership device name of your DOT 320 used when your DOT 320 is connected to your desktop using ActiveSync.

To set Device ID:

1. Select Start > Settings > Control Panel.
  2. Run System Program, and select Device Name.
  3. Enter device name and detail description.
-



## Volume & Sounds

You can set the volume control and select sounds to use.

### Volume

To adjust volume and to set sounds:

1. Select Start > Settings > Control Panel.
2. Open the Volume & Sounds and select Volume tab.
3. Tap Soft or Loud arrow to adjust volume.
4. Check each item to enable sounds for: Events (warning, system events), Applications, and Notifications (alarms, reminder).

### Sounds

To change event sounds:

1. Select Start > Settings > Control Panel.
  2. Open the Volume & Sounds icon, and then select the Sound tab.
  3. From the Event name list, select an event.
  4. From the Event sound list, select a sound.
  5. To remove a sound from the selected event, select None.
  6. To save the changes to a different scheme, select Save As, and then name the sound scheme.
  7. To delete a sound scheme, select it in the list and select Delete.
-



## 7. Using Personal Information Managers

DOT 320's PIMs (Personal Information Managers) includes Calendar, Contacts, Tasks, XInbox, and Notes. You can use these programs individually or together.

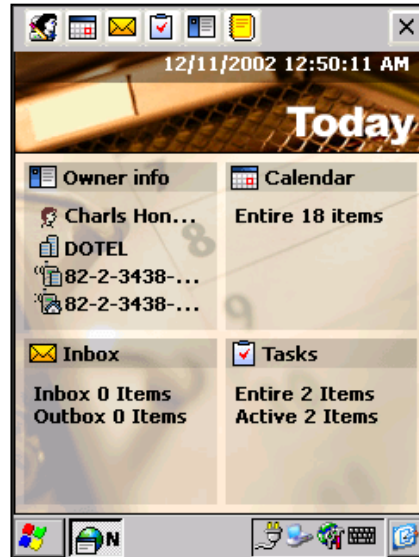
Using ActiveSync, you can synchronize information in Microsoft Outlook on your desktop PC with information in PIMs on DOT 320. Every time DOT 320 is synchronized, ActiveSync compares the changes you made on your DOT 320 and desktop PC, and updates both computer and DOT 320 with the latest information (You can set up which data will be replaced at option in ActiveSync).

### **PIMs contains following applications:**

- **Today:** Display brief information for today.
  - **Inbox:** Send and receive messages (including e-Mail) via desktop PC.
  - **Calendar:** Display Day, Week, Month, and Year calendar scheduling for your appointments and meetings.
  - **Contacts:** Display and keep track of friends and colleagues contact information.
  - **Tasks:** Display and keep to-do list.
  - **Notes:** Display and capture your thoughts and ideas by drawing and typing.
  - **PIMs Backup:** Backup Data(Data Base) and Notification data to CF Memory Card or Flash ROM
-







## Today

When you select Start > Programs > PIMS > Today, you will see the Today window shown below. If you see the Windows CE main window, you can also display Today window by tapping Start > Programs > PIMS > Today on the start menu.



This Today window displays brief information about your day. The Today window consists of 4 items: Owner info, Calendar, Inbox, and Tasks. By tapping each item, you can start viewing and editing your information.

The icons above Today window are as following:

-  Owner Information: Shows the owner's name, Company Name, and Work Phone/Home Phone Number.
-  Calendar: Shows Calendar
-  Inbox: Shows Inbox
-  Tasks: Shows Tasks
-  Contacts: Shows Contacts
-  Notes: Shows Memos

## Owner Information

Used For informing the Name, Company Name, Address, Telephone Number, e-Mail address and Notes for DOT320's Owner. In Today window, just owner's name and telephone number are displayed.

If you want to edit or create the Owner Information, tap the Settings in the start menu, and tap the Owner icon. You will see the Owner Properties window. Enter owner's name, company name, and address. For gaining access to network resources, enter user name and password in your Network ID dialog box.

---

## Inbox

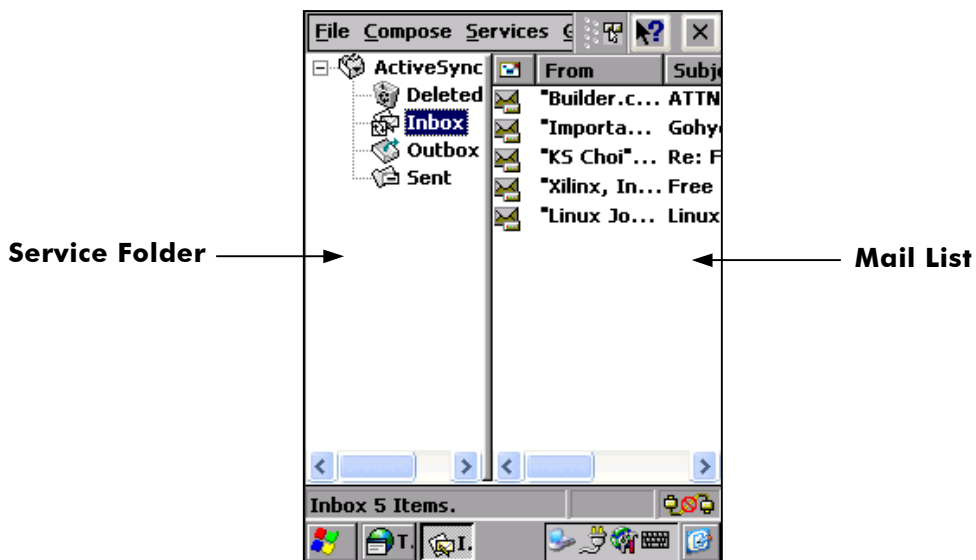
You can send and receive e-mail messages in two ways in Inbox. First, you can send messages in Inbox from a device and receive messages from Microsoft Outlook in a desktop via ActiveSync.

Second, in using wireless/wired network, you can receive e-mail messages from POP3 and send messages through SMTP server. DOT 320 uses the Pocket Mail Microsoft provided.

Before sending/receiving messages, you must connect DOT 320 to desktop PC with ActiveSync and set the Inbox synchronization from the option.

To set inbox synchronization

1. In ActiveSync program on your desktop PC, on the Tools menu, click Options, and then select the Inbox.
2. E-mail messages in the Inbox folder of desktop of Microsoft Outlook are copied to the Inbox folder on your DOT 320. The E-mail messages between the desktop PC and DOT 320 are linked, so when you delete an e-mail message on your DOT 320, it will be deleted from your desktop PC the next time you synchronize.
3. E-mail messages in the Outlook folder on your DOT 320 are transferred to the Outbox in Microsoft Outlook on your desktop PC. The messages are sent the next time you send mail from your desktop PC.



**Note:**

1. When sending or receiving e-mail by Activesync, the "Synchronization finished, 1 resolved item" message appears. To solve this, click Resolve Item and set "To" to address in contacts in Outlook of desktop PC.
  2. You can enter recipients by calling name or e-mail address.
- 

## Message list

Messages you receive are displayed in the mail list. By default, the most recently received mail appears first in the list.

To view a message:

1. Tap the Service folder.
2. Select a subfolder (Inbox, Outbox, Sent, Deleted(local))
3. Tap the item you want to edit or view

## Sending and receiving messages with Inbox

If you have an e-mail account with an ISP or on a corporate network, you can connect to the POP3/SMTP e-mail server for that account with a network card, and then use inbox to send and receive e-mail messages directly.

When you connect to the POP3/SMTP e-mail server, new messages are downloaded to the Inbox folder on your DOT 320. Messages in your Outbox folder are sent, and messages that have been deleted on the POP3/SMTP e-mail server are deleted from the Inbox folder when you re-connect next time.

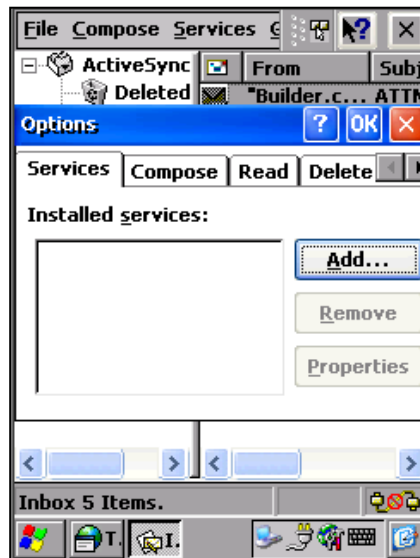
Messages that you receive directly from a POP3/SMTP e-mail server (rather than from your desktop PC) remain linked to the POP3/SMTP e-mail server. If you delete a message on your DOT 320, the message will be deleted from the POP3/SMTP e-mail server the next time you connect.

You can work with e-mail messages online or offline. When working online, you read messages while connected to the e-mail server. To retrieve messages from an e-mail account, you must set up a service for that account. The service includes your account information, messages delivery options, and a link to a dial up or a network connection.

---

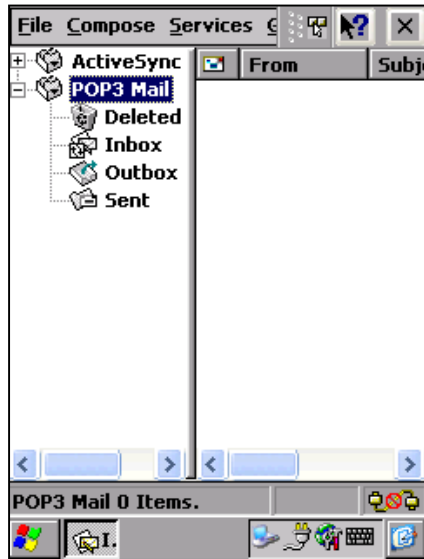
To create an e-mail service with Network Connection

1. On the Start menu, select Programs, and then tap the PIMS and Inbox icon. Or, you can run Inbox directly on the Today.
2. On the service menu, tap Service > Options.
3. In Services tab, tap Add. Service Name window appears.



1. Select Service type and enter Service name (ex.POP3 Mail) and tap OK. POP3 Mail Service Definition window appears.
2. Select Connection, and enter Host name, User ID, and Password. Ask your mail server administrator or refer to mail connection setting of your PC for detail setting. Optionally, enter domain, SMTP host, and return address. Tap Next.
3. POP3 Mail General Preference window appears.
4. Set up connection settings and tap Next.
5. Set Inbox Option, tap Finish.
6. After finishing setting, Options window appears. You can modify Properties.

7. Tap OK. Then added Mail Service will appear in Folder.



You can connect to a POP3 server using DOT 320. Inbox contains an e-mail service for each method you use. For example, if you receive an e-mail through a connection to a POP3 server, Inbox will contain a service, POP3 Mail. POP3 e-mail service has its own folder hierarchy with four default folders: Inbox, Outbox, Deleted (local), and Sent. The messages you receive and send through the mail service are stored in these folders. You can also create additional folders within each hierarchy.

When connecting to a POP3 or IMAP4 server, you may use a modem or Ethernet card to connect to your Internet service provider (ISP), or to the local area network that your mail server is connected to. In addition to creating a connection to your ISP or network, you must create an e-mail service in Inbox.

---



## Received Mail

Tap a mail in Mail list, then you can see details of the received mail. In the below window, you can edit and view the message you selected.



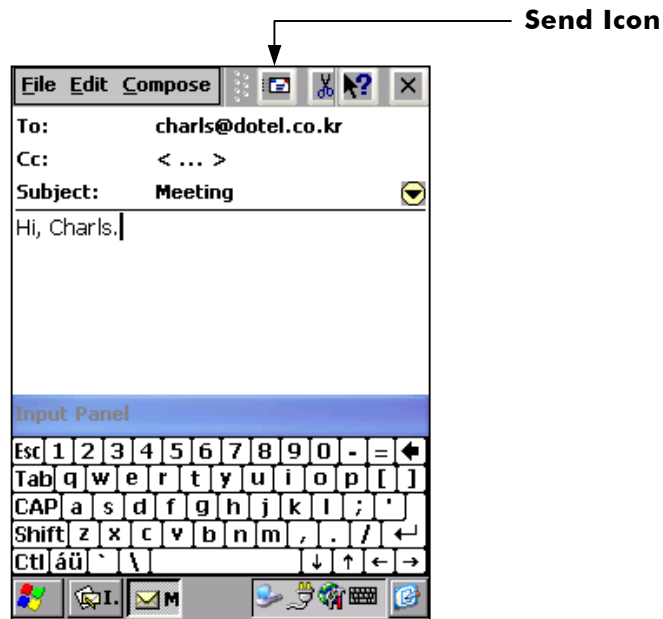
To edit the received message, follow these steps below:

1. Tap a message in the message list
2. By Tapping the Delete, Reply, Forward, Move and show/hide icon, you can edit or view the message.

## Create New Message

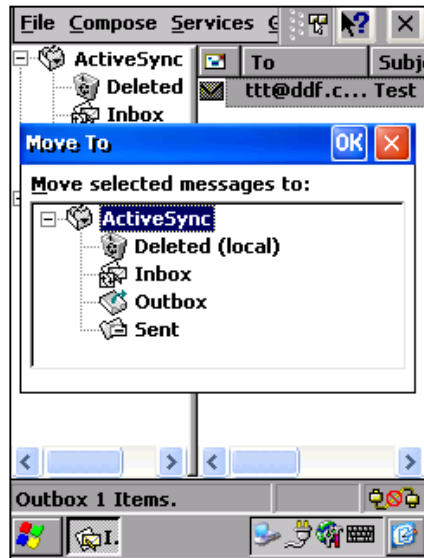
You can create a new message as following:

1. Select Outbox in Service Folder.
2. Select Compose and New message in Menu Bar, then make a new message window appears as shown below.



1. Enter To, Cc, and Subject.
  2. You can select To and Cc from Contacts. To select a contact from Contacts, tap To window and select Compose > Address Book.
  3. Select contact.
  4. Enter mail content, tap Send.
  5. The message is saved in the Outbox folder. The messages in Outbox will be sent when synchronized with desktop PC.
-

## Moving/Coping messages



You can move/copy several messages as well as a message to another folder.

To move/copy a message:

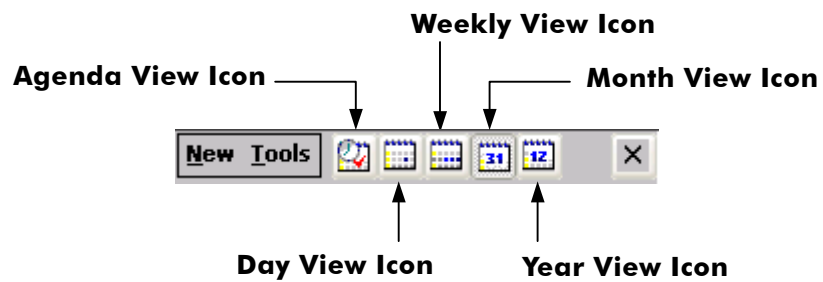
1. Select message to move or copy.
2. Select File, and Move to or Copy to. Appreciate window appears.
3. Select folder to move or copy.
4. Tap OK.

## Calendar

Using the Calendar, you can schedule your appointments including meetings and other events and check your appointments in several ways: Daily, Weekly, Monthly, and Yearly calendar.

## Menu Bar

Menu bar is shown below:



New Menu: create new appointment.

### Tools Menu

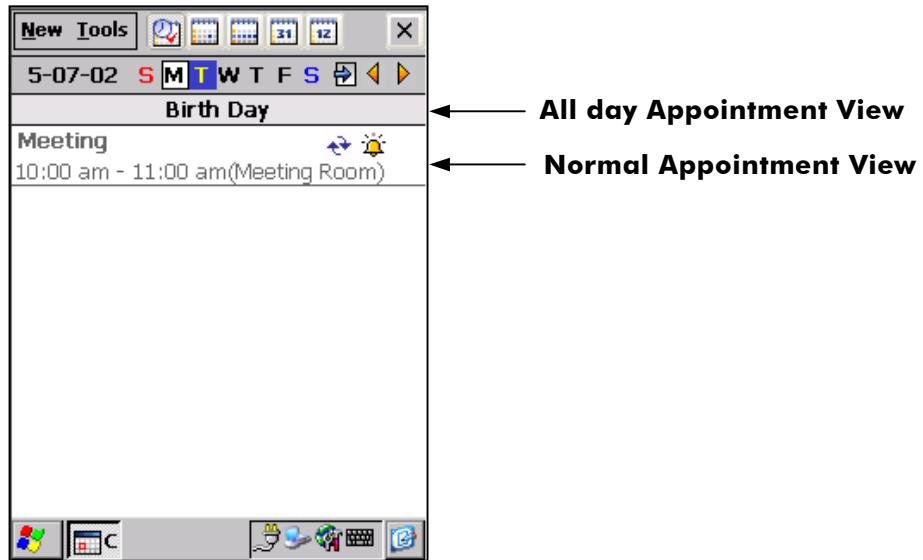
**Categories:** shows category lists. You can add, delete, and modify category.

**Options:** set calendar options: set week view, show half hour slots, set reminding time, show/hide Icon, and Reminder Sound.

You can change view mode by just tapping view icon in menu bar.

---




## Agenda View



You can view and set your “All day appointments” and “Normal appointments” in agenda view window. You can also edit schedules; New, Copy, Paste, and Delete.

“All day Appointment Item” shows only a Subject and “Normal Appointment Item” shows Subject, Start time, End time, Location and Icons (Reminder, Occurrence, Sensitivity).

The property of appointment is as following:

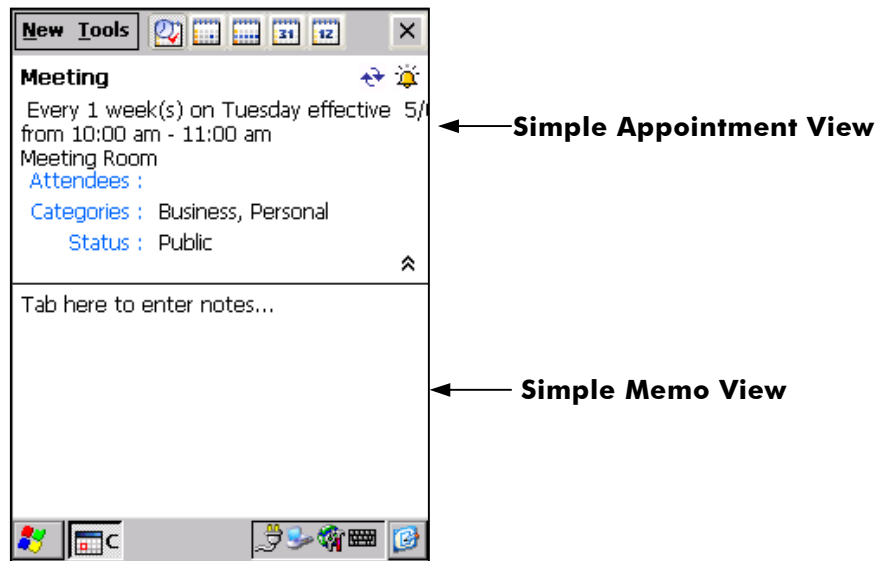
-  : Reminder Icon
-  : Occurrence Icon
-  : Sensitivity Icon

## Appointment View

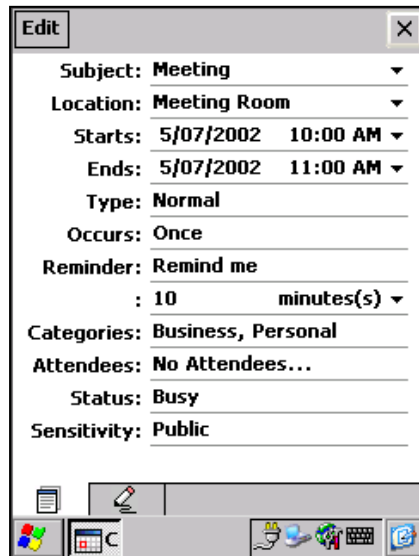
When you select an item from Agenda View, Day View, or Week View, you can see an appointment in details.


“Details View” shows Subject, Start time, End time, Location, Icons (Reminder, Occurrence, Sensitivity), attendees, Categories, and Status.


“Memo View” shows any additional information you wrote.



Tap each view window to edit an appointment. You will edit or view an appointment in detail with a attribute view window as follow:



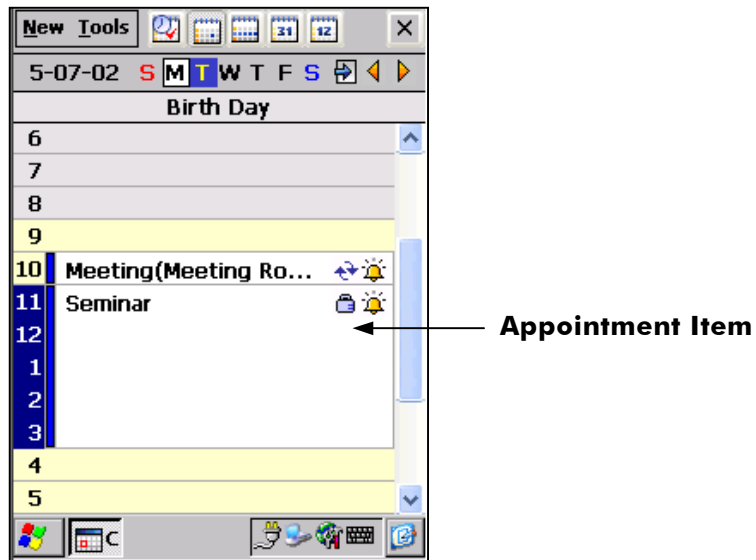
 Appointment edit: edit appointment details

 Note edit: edit notes in appointment

## Day View

Day View shows a schedule of any selected day and time. You can create a new appointment by selecting “New” in a menu bar. Also, you can change the appointment time by tapping an appointment item.

Day View supports “Edit” tool (Copy, Delete, Paste, and Cut) about the appointment item.

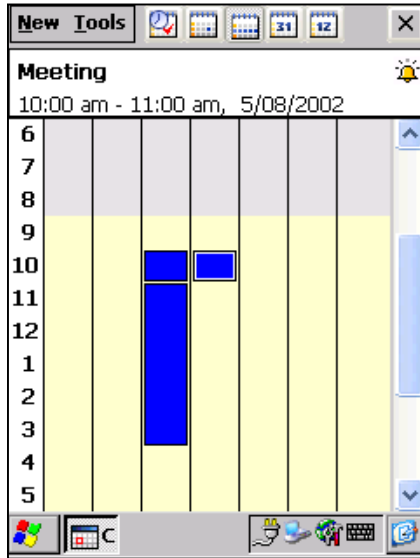


In the day view window, you can move to the Appointment View by tapping an appointment item and edit an appointment.

## Weekly View

Weekly View shows appointments in any selected week. You can move the relevant "Day View / Year View / Month View" by tapping an appointment item.

Tap the arrow buttons in the upper part of the window and move to previous, this, or next week.





## Month View






Month view is the default view of calendar.



You can see a monthly schedule. You can move to the relevant Day View by tapping an appointment item.

Tap the arrow buttons in the upper part of the window and move to previous, this or next month.

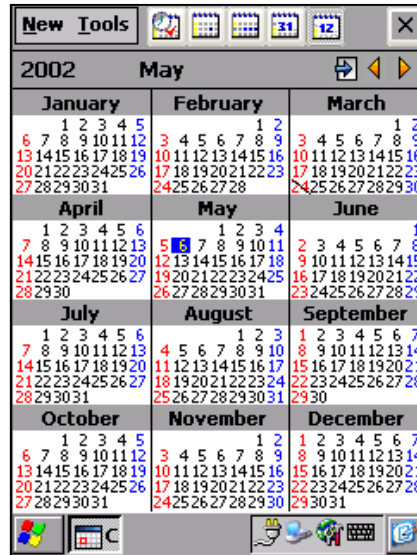
The appointment icon in the month view shows the property of an appointment. The property of icon is as follow:

Property Icons of Appointment	
ICON	Description
	Morning Appointment
	Afternoon Appointment
	Morning and Afternoon Appointment
	All day Appointment
	Move to today

## Year View

Year View shows a calendar of a year with appointments.

You can move to the relevant "Day View" by tapping specific date.



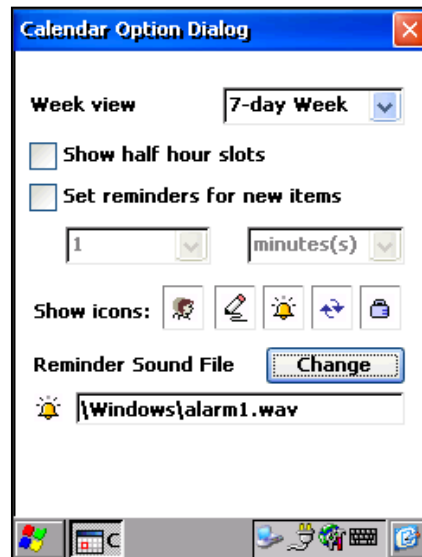
Tap a day from the calendar and then a drop-down box shows up.

You can select the year you want to see directly by tapping the arrow buttons in the upper part of the window and move to last or next year.

## Options

You can set options of appointment.

Tap Tools > Option. Then Option window appears.



Week view setting: set number of days consists a week. You can select 5, 6, or 7 day week. If you select 5-day week, only 5 days (from Monday to Friday) shows in weekly view window. 6-day week shows from Monday to Saturday.

Half hour slot setting: show half hour slots in Day view window.

Reminder Time setting: enable remind and set remind time. Select remind time unit (minute(s), hour(s), day(s), a week(s)) and set remind time. Set value maintains even when creating new appointment.

Show Icon: set icon to display in calendar. Tap icon to display.

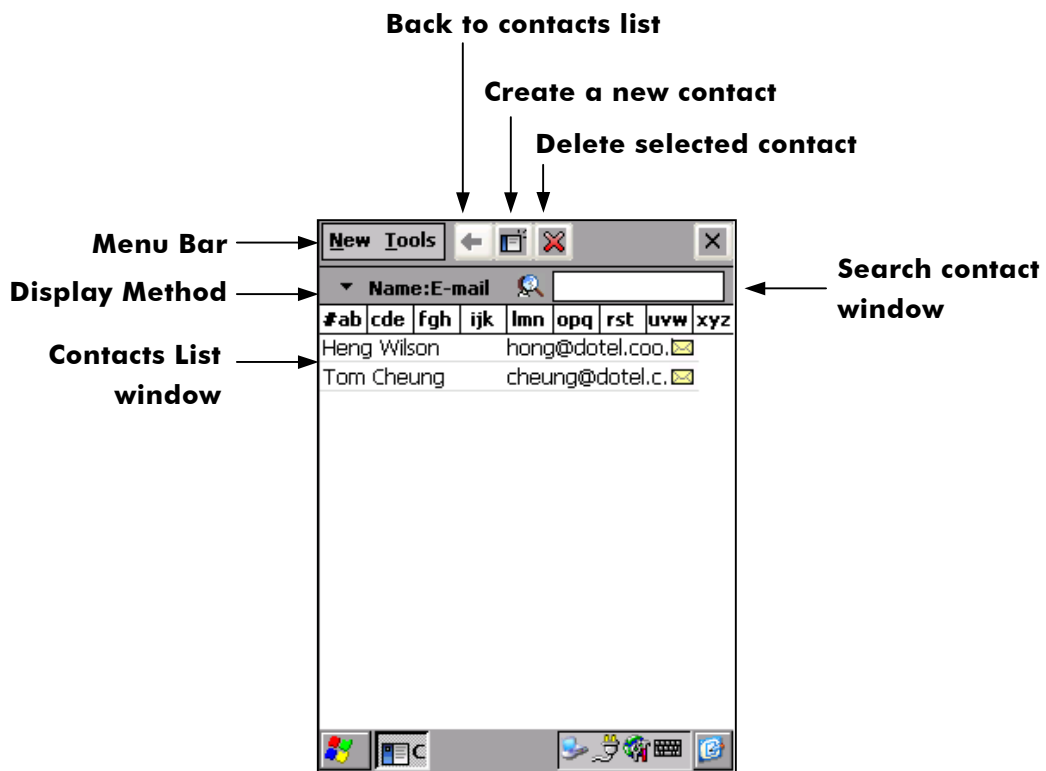
Reminder Sound setting: select sound for remind. At reminder time, DOT 320 alarm user using alarm sound and dialog box in tray. Reminder sound is in My Computer/Windows.

## Contacts

Contacts maintains a list of your friends and colleagues so that you can easily find the information you are looking for, whether you are at home or on the road. Using Microsoft ActiveSync 3.5, you can quickly share Contacts information with your desktop PC.

### Main contact window

The Main window of Contacts is as following:



- ✓ Menu Bar consists of New, Tools Menu and Icon Menu Bar.
- ✓ New Menu is for creating new contact. To create new contact, tap New. Then Edit Contact window appears. New contact appears in Contact List window.
- ✓ Tools Menu is for setting options of contact.
- ✓ Icons in Icons Menu Bar are as follow:
  - Back to Contact list: return to the main contact window.
  - Create a new contact: create new contact.
  - Delete selected contact: delete selected contact.

- ✓ Display Method: sort contacts in Main Contact Window by Name, Company, Office Tel, Cellular phone, Home Tel, or E-mail.
- ✓ Search Contact window: search contact. Enter the key-word to find in Search Contact window and tap Search icon. Then Main Contact window shows the contacts including key-word. To show all of the list again, tap the icon beside the input window.

## Brief View

Tap a contact in the main contact window. The brief information for the selected item shows. Tap Brief Contact window to change to Edit Contact window.



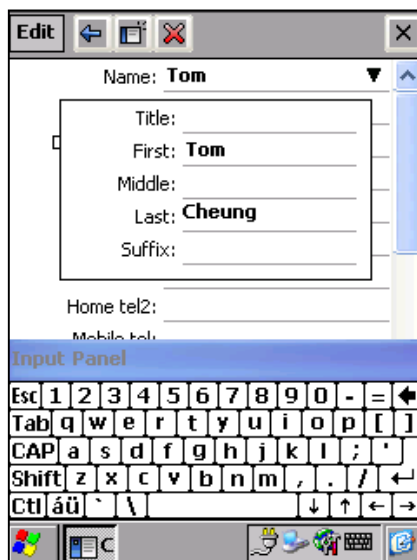
## Edit View

You can create a new contact or edit exist contacts in Edit Contact window.

Some items have an arrow next to the input box. You can enter detail of item with arrow in two ways:

- 1) Tap the item and enter details.
- 2) Tap the arrow next to the input box. Then detail input box of selected item appears.

After completing editing, tap close to save or dismiss. Saved contact will appear in Main Contact list.



## Options View

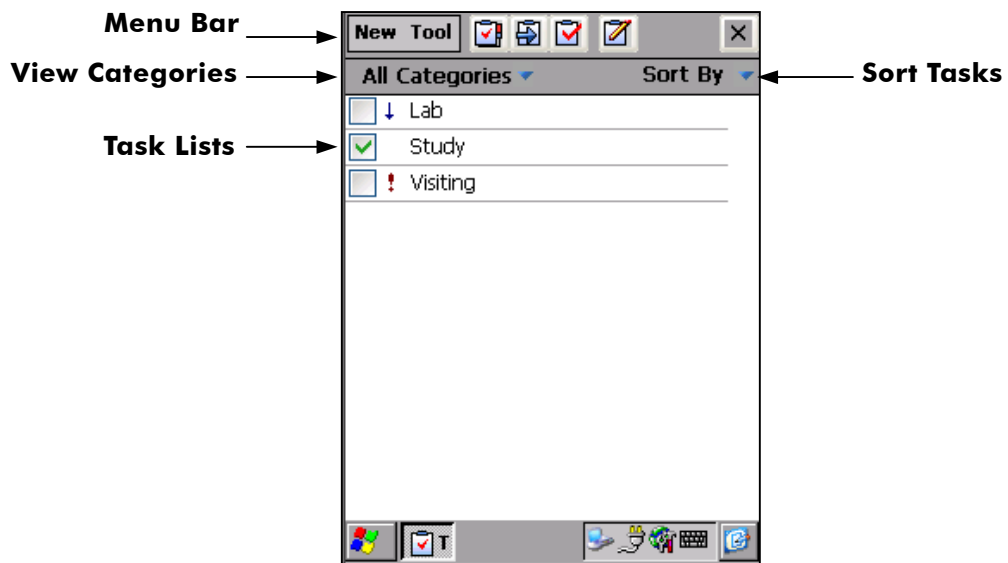
- ✓ Lists view Settings:
    1. Show 'ABC' tabs: Decide to show the alphabetical order column such as '#ab', 'cde' in the main contact window.
    2. Use large font: Set to use large font
  - ✓ Country/Region Settings:
    1. Area code: Enter an area code.
    2. Country: Select the country
-

## Tasks

Use Tasks to keep track of what you have to do. When you tap a task in the Task list, a summary window of the information you entered is displayed.





In the task list, overdue tasks are displayed in red.

### TASK Main View



Menu Bar: consists of New Menu, Tool Menu, Quick icons. Tap New > New Task to create a new task, Task Edit window appears. You can set up options of task in Tool > Options.

Quick icons: Enables to select the Categories menu quickly

-  Shows all lists
-  Shows only the tasks in progress
-  Shows only the completed tasks
-  Show Quick Bar in main window

View Categories: show task list by category. You can edit category list in Category in Task Edit window. And you can view only Active task or Completed task by selecting category.

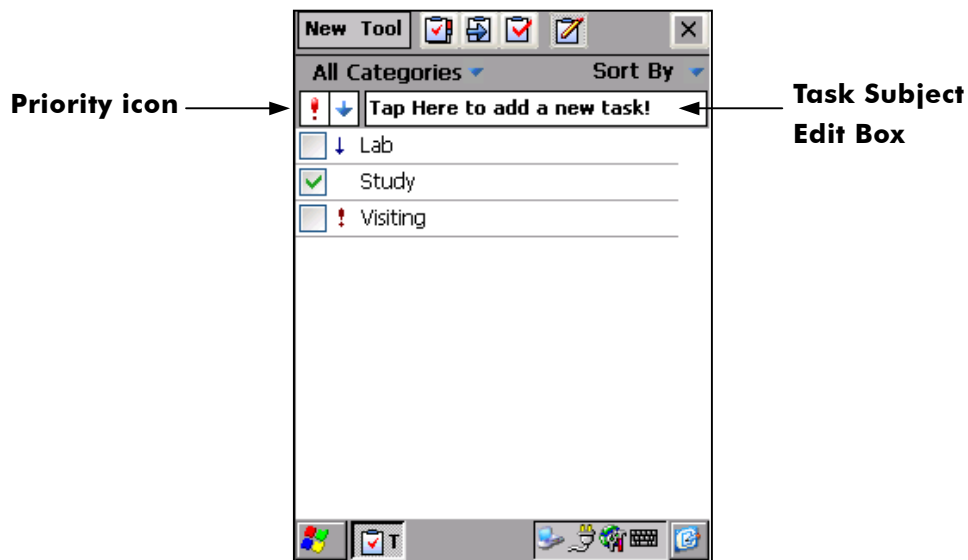
Sort Tasks: sort task by Status, Priority, Subject, Start Day, or Due Day.

List View: show tasks. Icons before task name describes as follow:

- shows the status of being in progress
- shows the status of being completed
- ! shows high priority tasks.
- ↓ shows low priority tasks.

You can view details of task by tapping the name of task in task list. Then Task Brief View window shows details of selected task. You can edit selected task by tapping Task Brief View window.

## TASK Quick Bar

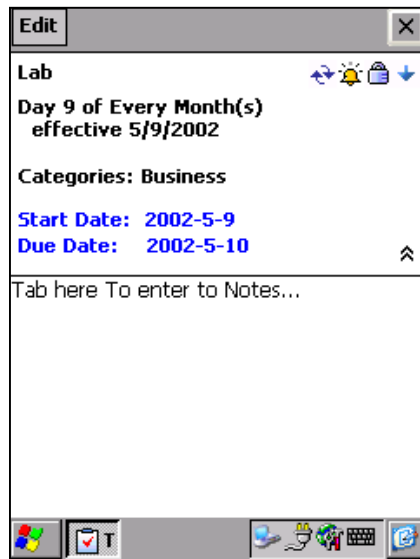


To enable the Quick Bar:

1. Tap the quick bar icon from the Toolbar or Tool/Quick Bar from the menu to show a Quick Bar.
  2. By enabling the Quick Bar, without setting the additional task in details, you can set only the task name and the priority quickly.  
It also makes it possible to set IM automatically by selecting an edit window directly or tapping the Priority icon on the Quick Bar window.
  3. To delete or copy task:
    - a. Tap-and-hold note to delete/copy. Appreciate window appears.
    - b. Select Delete or Create Copy.
    - c. The task dialog box for confirming deletion appears.
-

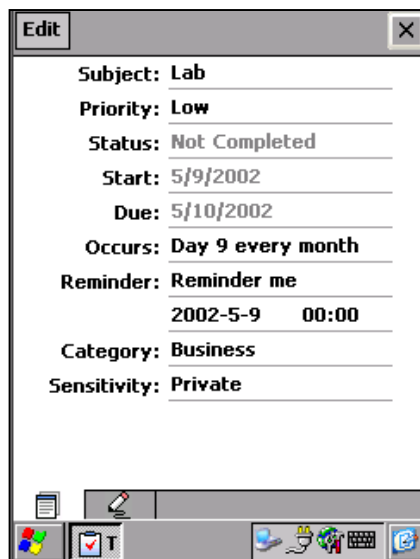


## TASK Brief View



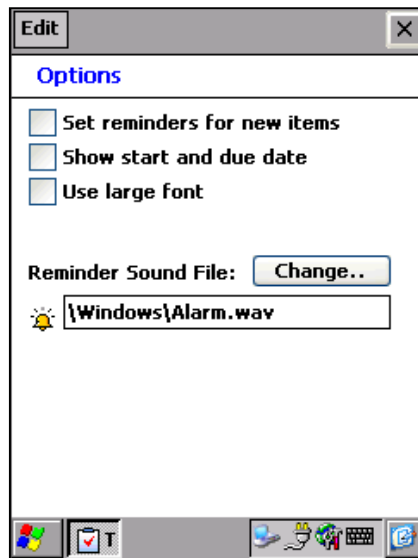
1. Tap the arrow in right-down in Brief View window. Then Start and Due date appears.
2. Tap the upper part of task, then task edit window appears.
3. By tapping the lower part of task, you can add a note to a task.

## Task Edit View



1. When tap New > New Task or Task brief view window, Task Edit window appears. Enter information to each item and close Task Edit window. Then new task appears in Main Task window.
2. You can add a note to task by tapping Note icon under the Task Edit window. You can create a note by transcribes or Soft keyboard.

## Set up Task options



To set up Task Options:

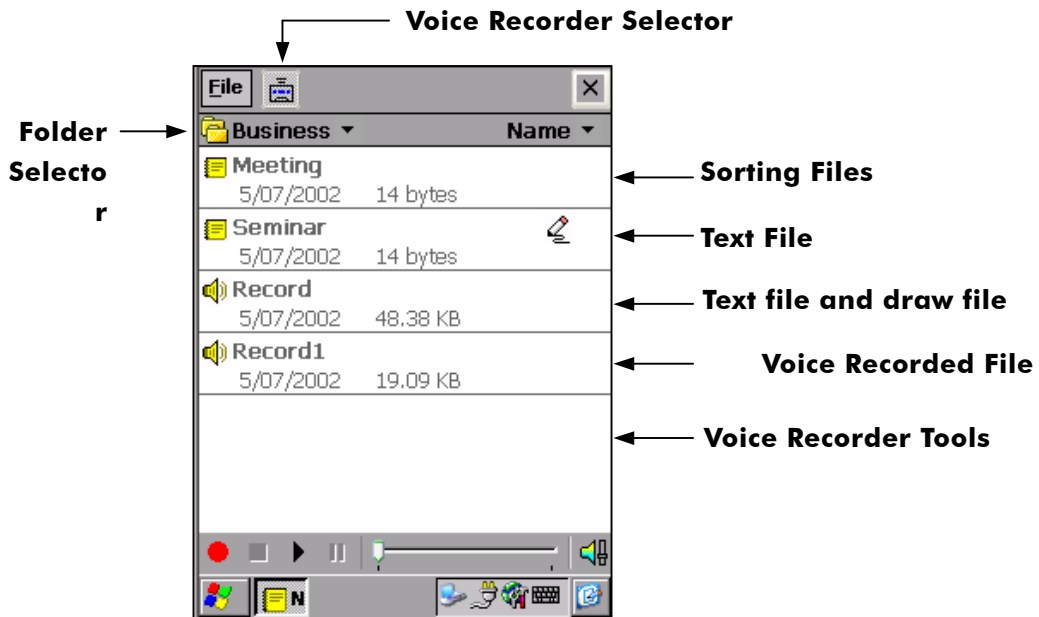
1. Select Tool > Options. Options window appears.
2. Check Set reminders for new items for reminding user of a new task.
3. Check Show start and due date to show start and due date in main task window.
4. Check Use a large font to use capital characters.
5. Tap Change to change the sound for alarm. My Computer/ Windows Directory에서 Select the sound file for alarm. Wav. files can be used for alarm.

## Notes


The Notes is used for the user to quickly capture thoughts, reminders, ideas, drawings and phone numbers.

And Notes can be linked with all PIMs applications.

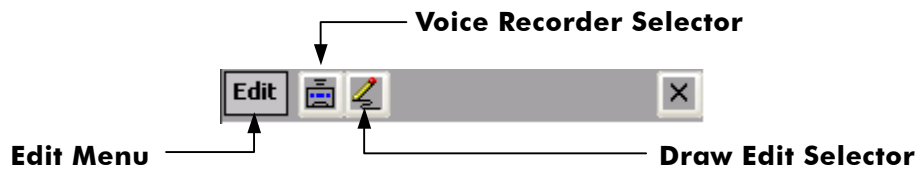
Notes is consisted of Text Editor, Draw Editor, and Voice Recorder.




Each menu of Notes is:

- ✓ File Menu: Make a new note and view about for notes program.
- ✓  Voice Recorder Icon: Tap Voice Recorder icon or press Voice record button, then Voice Recorder Tools appears. You can process voice recording using Voice Recorder Tools.
- ✓ Folder Selector: Select a folder to save a new note.
- ✓ Sorting files: Sort notes ordered by Name, Date, Size, or Type.
- ✓ Create New File: Tap File > New, then Text Edit window appears.

Icon of Menu Bar is as following:



- ✓ Edit Menu: edit selected text: Select All, Clear, Paste, Copy, Cut, and Undo.
-  Draw Editor Icon: save information or Memo by drawing by Stylus Pen.

## Text Edit Mode

You can input the character by soft keyboard or handwriting, and also can draw as instructed below.

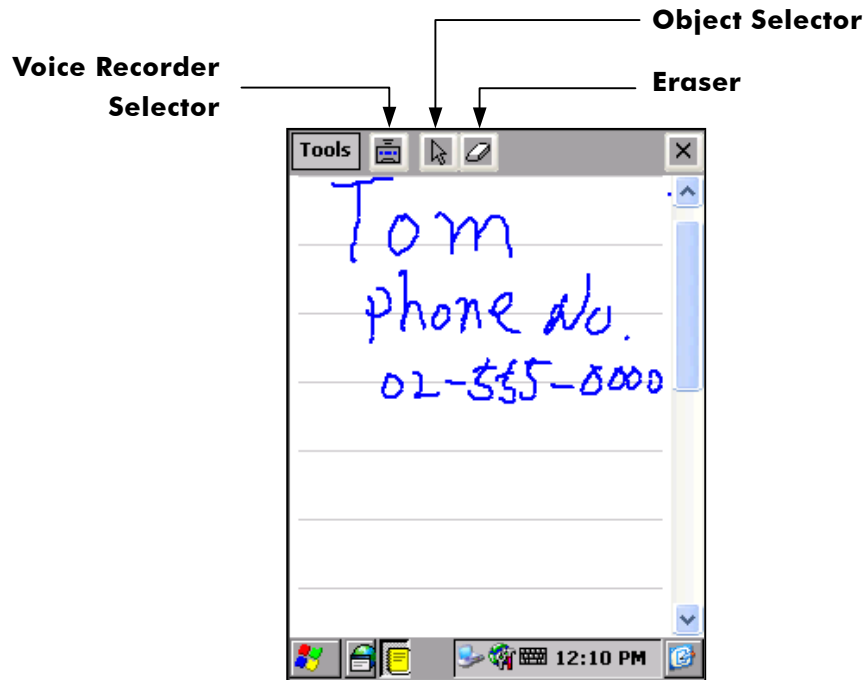
Using soft keyboard:

1. Run Notes.
2. Tap File > New. Edit window appears.
3. Tap keyboard icon in taskbar.
4. Input the character by tapping soft keyboard.

Using Transcriber:

1. Run Notes.
  2. Tap File > New. Edit window appears.
  3. Tap Transcriber icon in taskbar. If there is not a transcriber icon in taskbar, run transcriber first.
  4. Draw the character by stylus pen on the Note Pad for recognizing it into text.
-

## Draw Editor



Draw memo using stylus pen.



**Note:**

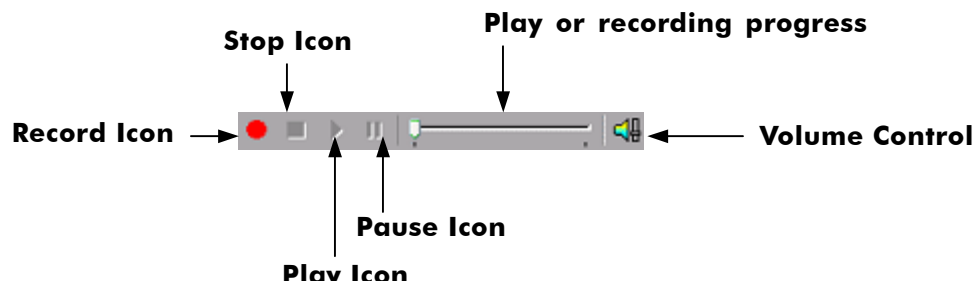
Drawing edit do not support Transcriber.

---

To erase a drawn memo, tap Object Selector, and drag to select object, then tap Eraser. Tap close to save memo.

---

## Voice Recorder



You can record voice using Voice Recorder Tools.

Tap Record Icon or press Voice Recorder Function Button. While recording, Progress Bar shows now recording.

To stop recording, tap Stop Icon or press Voice Recorder Button again.

By tapping Play Icon, you can play the recorded voice or sounds.

You can control volume by tapping Volume Control Icon. By sliding, the volume is up or down

In order not to use Voice Recorder, tap Voice Recorder Selector in Menu Bar.

---

## PIMs Backup

You can backup PIMs Data (Data Base) and Notify Data (Data Base) to CF Memory or Flash ROM to restore them when a serious problem with DOT 320 system occurs.



**Note:**

PIMs Data Backup to Desktop PC is not supported.



To backup PIMs Data:

1. Select PIMs Start > PIMS > PIMs Backup, or Press and hold function Button 4.
2. Warning Message occurs when Flash ROM or CF Memory is not mounted to DOT 320 File System. To solve this, select Start > Settings > Control Panel > Storage Manger and then mount storages. For more information, refer to **6. Setting your DOT 320.**
3. Check data to backup from File List Box. And specify the folder to Backup.
4. Tap Backup.

To restore PIMs Data:

1. Select Storage to restore data from Storage List.
2. Check data to restore from File List.
3. Tap Restore Icon.



## 8. Using Application Software

### Calculator

DOT 320 provides Nacotech's Redcal calculator. You can use not only simple calculator but also engineering calculator, simple programming tool, unit conversion, exchange rates, notation conversion, and graph.

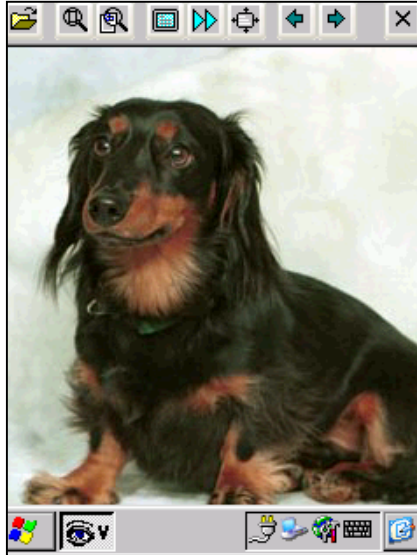
To use calculator, select Start > Programs > Applications > Calculator.









For more detailed information, refer to **Redcal User's Guide** in bundle CD-ROM.

---

## Viewer

You can view image files using viewer. To run viewer, select Start > Programs > Application > Viewer. Viewer supports the following image file types: jpg, gif, bmp, tif, and png.



Icon and Function of Viewer		
Icon	Name	Description
	Open	Opens Image file
	Zoom In	Zoon in present image
	Zoom Out	Zoom out present image
	Full Screen Mode	Changes to Full Screen Mode
	Slide Show	Displays all image files in My Computer
	Fit Image to Screen	Fits image to screen size.
	Previous Image	Display Previous Image
	Next Image	Display Next Image

## 9. Using Utility Programs

You can configure DOT 320 using utilities.

Select Utilities and appreciate utility: Backlight, Buttons, Contrast, Menus, QStart, and TaskMan.



## **Backlight**

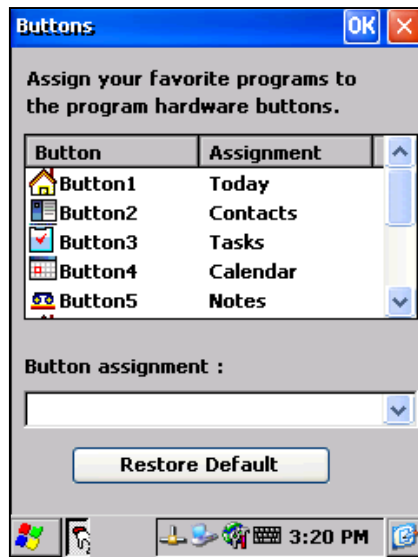
You can select Brightness level of Display by tapping the Backlight menu in Utility Programs. Set the brightness level by checking radio button. Also, you can light on or off by tapping Light On/Off.

You can select four brightness levels: Super Brightness, High Brightness, Medium Brightness, or Low Brightness.

---

## Buttons

To assign custom applications to function buttons, select Utilities > Buttons. Buttons window appears.



To change assignment of each button:

1. Select a button to change assignment.
2. Choose an application to assign by Button assignment drop-down list box.
3. You can assign for press and press-and-hold button.
4. To restore the default assignment, tap Restore Default.

## **Contrast**

You can set contrast of the LCD display. Move slide volume to adjust contrast.

## **Menus**

In Menus, you can select the programs to appear in Favorite.

Installed programs appear automatically in program list. Check a program to add.

You can see added items in the Start > Programs > Favorites.

## **QStart**

You can quickly run applications in a specific category using QStart. QStart consists of Tools and Menus.

To add and delete a category, tap Tools. You can add programs to a category.

From the QStart main window, tap category drop-down list. Then, you can check default categories and added categories. Select a category, then added programs appear in program list.

## **Task Manager**

To indicate the current working program, tap the Task manager in Utility program. When there is any problem with an application, you can switch to another application or end the application forcibly.

---

# 10. Using Microsoft Applications



## Command Prompt

DOT 320 contains window console for pocket CMD. You can use DOS command using pocket CMD.





## Microsoft Media Player

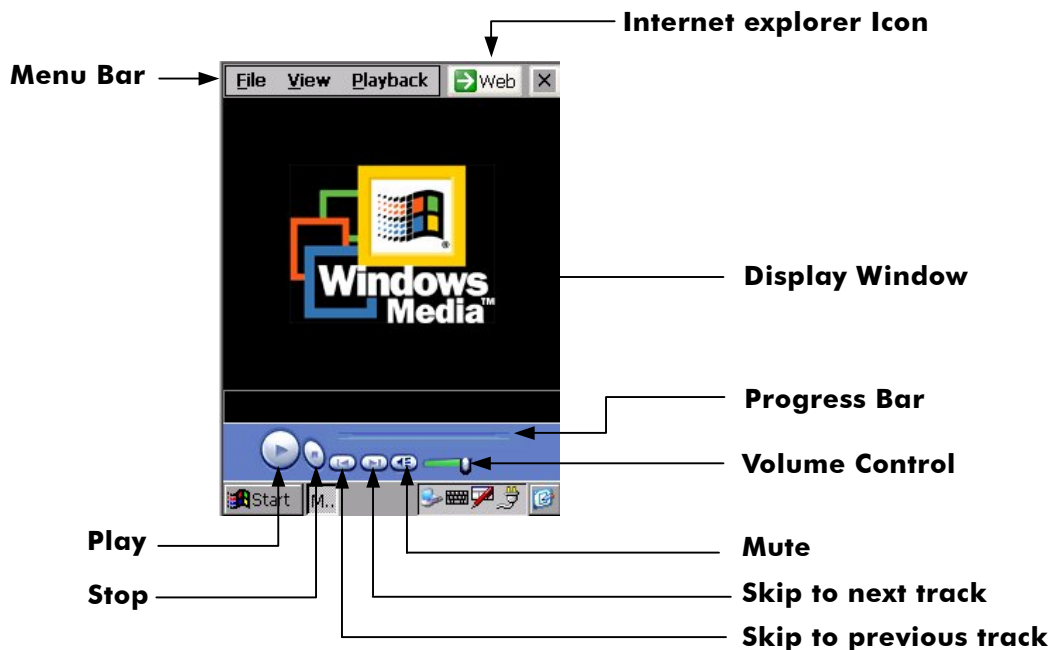
You can enjoy digital music and movie using the Microsoft Windows Media Player. Media Player supports the following multimedia formats: ASF, WMA, MP3, and WAV.

TIP: If the audio data are not the format such as ASF, WMA, MP3, and WAV, you should convert the digital audio data to these file formats using "Microsoft Media Manager"

You can copy multimedia files to your DOT 320 from your desktop. Download multimedia files from websites or copy audio files from your CD-ROM to your desktop. And copy the downloaded multimedia files to your DOT 320. The Default folder for copied files is My Documents.

Use ActiveSync to copy multimedia files from your desktop to your DOT 320.

To run the Windows Media Player, select Start > Programs > Media Player.



- ✓ Adjust the Volume: Move the slider of Volume Control to adjust the volume. Left is softer, right louder.
- ✓ Navigate a Track: Move the slider of Process Bar to navigate through a track. Tracks play from left to right.
- ✓ Internet Explorer Icon: run Internet Explorer. You can download or play media play files from Web site using Internet Explorer.



## File

Open: open URL or multimedia file. Tap Browse to open a multimedia file from a specific folder.

You can play a streaming media file without downloading.

To play streaming files:

Select File > Open. Open URL window appears.

Enter a URL and tap OK.

Tap play icon to play streaming media file.



### Note:

To play a streaming media file, you must be connected to a network. For more information about creating a remote connection between your DOT 320 and a network, ask your network administrator.

---

- ✓ Close: close an opened multimedia file.
- ✓ Playlists: customized list of multimedia files. The first time you start Windows Media Player, there are two default playlists: Local Content and Web Favorites.

Local Content contains all the multimedia files found in your DOT 320 and storage card. You cannot edit Local Content.

Web Favorites lists your favorite streaming media files. In default, web favorite playlist is empty. You can edit web favorite playlist.

You can create a new playlist.

To create a new playlist:

Select File > Playlist. Organize Playlists window appears.

Tap name of playlist and select Organize Playlists.

Tap New and enter the name of a new playlist. Default name is "Playlist"

Select the created playlist and tap OK. Add Content: Playlist window appears.

Add Contents window shows all multimedia files in your DOT 320 and storage card. Select files to add then tap OK.

Playlist window shows selected multimedia files.

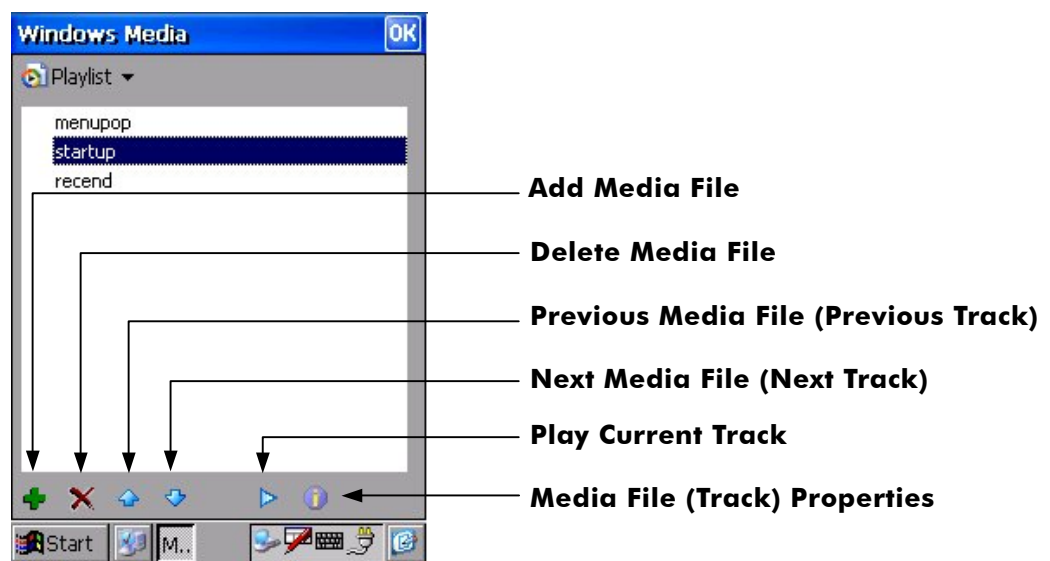
---

You can edit an existing playlist.

To edit a playlist:

1. Select File > Playlist.
2. Tap the name of the playlist and select Organize Playlists.
3. Select a playlist to edit. Then tap Rename to rename the playlist.
4. Add, delete, or move multimedia file in playlist, select a playlist to edit, then contains file list appears.

Select a file to edit and tap appropriate button shown on the following image:



You can delete an existing playlist.

To delete a playlist:

1. Select File > Playlists.
2. In the drop-down list box, tap Organize Playlists.
3. Select a playlist to delete and tap Delete.

**Favorites:** You can play multimedia files quickly using favorites. Favorites is the specified playlist.

To add a multimedia file or streaming media file to favorite:

1. Play a multimedia file to add to favorite.
  2. While a multimedia file is being loaded, select File > Favorites > Add to Favorites.
  3. Added files are shown under Favorites.
-

You can organize favorites.

To organize favorites:

1. Select File > Favorites > Organize Favorites. Favorites window appears.
2. For more information about edit favorites, refer to edit playlist.

To play multimedia files in favorites:

1. Select File > Favorites.
2. In the drop-down list box, added multimedia files are shown.
3. Select the file to play, and tap Play icon.

To delete a file from favorites:

1. Select file > Favorites.
2. In the drop-down list box, tap Organize Favorites.
3. Tap the file to delete, and then tap Delete icon.

Exit: close Media Player.

## **View**

- ✓ Zoom: zoom in or out. You can select 50%, 100%, or 200% or original size.
- ✓ Full Screen: play video file with full screen mode. Available only with video files.
- ✓ Statistics: shows statistics of media player: opened file name, source protocol, and memory usage.
- ✓ Properties: shows the properties of opened file: filename, duration, audio frequency, and whether this file is stereo type and is protected.

Options: set options of media player.

1. Select View > Options. Then Options window appears.
  2. Move the Slider to set the buffering time. Default buffering time is 3 seconds.
  3. Tap the check box to set a play mode. You can select Play once or Repeat forever.
  4. Set zoom level by drop-down list box.
-

## **Playback**

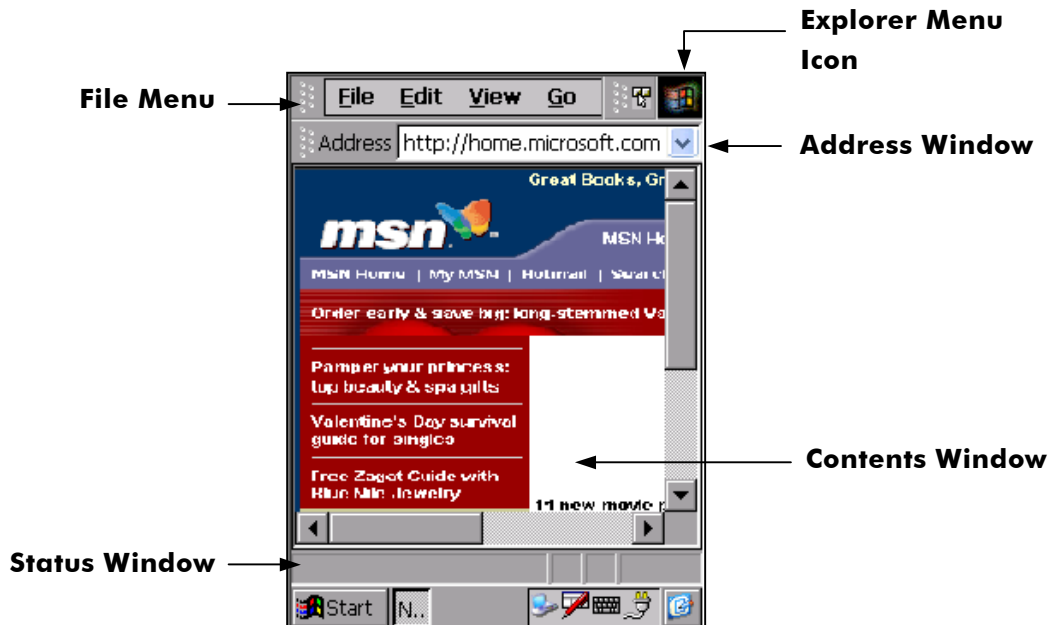
- ✓ Play: plays opened file.
- ✓ Pause: pauses playing file.
- ✓ Stop: stops playing file.
- ✓ Mute: mutes sound. To enable sound, select mute again.
- ✓ Repeat: plays repeatedly.
- ✓ Shuffle: plays files in random order.

## **Web**

Go to a web page for media player.

---

## Internet Explorer



With Pocket Internet Explorer in DOT 320, you can explore internet or intranet. You need a modem or an Ethernet card to connect to an Internet service provider (ISP) or a network. To set up Pocket Internet Explorer, refer to **6. Setting your DOT 320**.

You can use pocket internet explorer just like internet explorer in your desktop.

The Pocket Internet Explorer consists of four parts: Menu bar, Address window, Contents window, and Status window.

### Menu bar

There are two different menus: file menu and explorer menu. Default menu is the file menu. To change to other menu, tap explorer menu icon.

#### A. File menu bar

##### File

- ✓ Open: Open files. You can open various files such as HTML, Text, GIF, JPEG, AIFF, and XBM Files with pocket internet explorer.
  1. Select File > Open.
  2. Select a file to open. You can select file type by Type drop-down list.

3. Tap OK.
- ✓ **Save As:** You can save current web page to view later even when disconnected from the internet or intranet without using cache memory.

To save a copy of the current page:

1. Select File > Save As.
2. Specify a folder location and enter the file name.
3. You can save page as HTML or as text only. Select save type using Type drop-down list. You can view the HTML source code if you saved it as text.
4. Tap OK.

**Notes:**

When save a copy of page, images will not be displayed and links will be disabled. And web pages containing frames will not display those frames or will display only the frame structure.

To save an individual frame, tap ALT and the frame. Then Select Save As or Save Picture As from the Shortcut menu. Some frames are designed so that they can't be saved. Such frames will not be displayed once you open them as saved files from Windows Explorer.

---

**Find:** You can find a word or string.

1. Select File > Find. Find window appears
2. Enter a word or a phrase to find in Find what box.
3. Check Match whole word only to find a phrase that is completely matching.
4. Check Match case to divide capital and small characters.
5. Select direction. You can find upward or downward.
6. Tap Find Next to find.
7. To cancel find, tap Cancel.

**Work Offline:** As you view pages on the Internet, pages are cached in the Temporary Internet Files folder in My Computer. Browsing among cached pages is faster than returning to their Internet sites.

To use a cache page:

1. Before you disconnect, select File > Work Offline.
  2. Once you have disconnected, select Go > History.
  3. Select the page you want to view.
-



**Note:**

On work offline mode, links in web page will be disabled. When viewing cached Web pages that use frames, only the first frame of each frame will be displayed.

---

- ✓ Close: Close Pocket Internet Explorer.

**Edit**

- ✓ Cut: Cut selected region.
- ✓ Copy: Copy selected region.
- ✓ Paste: Paste selected region.

**View**

- ✓ Text Size: You can change text size. To change text size, select View > Text Size, and choose a proper font size. You can select: Largest, Larger, Medium, Smaller, or Smallest.
- ✓ Encoding: You can select a language to encode a page. Default is Auto-Select. To choose a specific language, select language from More list.
- ✓ Stop: You can stop loading page.
- ✓ Refresh: You can refresh current page.
- ✓ Internet Options: You can set up your internet options. For more information, refer to **6. Setting your DOT 320**.

**Go**

- ✓ Back: Back to previous page. Not available on the starting page.
  - ✓ Forward: Forward to previous page. Only available after going back to a previous page.
  - ✓ Home: Go to default home page.
  - ✓ Search: Go to default search page.
-

### **Favorite**

- ✓ Add Favorites: You can add the page to the favorite for easy access.
- ✓ To add current page to favorite:
  1. Go to the page you want to add.
  2. Select Favorites > Add to Favorites. Add Favorite window appears.
  3. Confirm or change the name.
  4. To locate the folder you want, tap Create in and select folder to add.
  5. Tap OK.
  
- ✓ Organize Favorites: You can organize added pages.
- ✓ To organize favorites:
  1. Select Favorite > Organize Favorite. Organize Favorites window appears.
  2. Select favorite page to edit, then tap appropriate button.
  3. You can rename, move, or delete page. To create a new folder, tap Create folder.

### **B. Explorer menu**

There are 6 icons on explorer menu: Back, Forward, Stop, Refresh, Home, and Search. Refer to appropriate file menu for more information.

### **Address Window**

You can move to other page by entering URL in the address window. Also, you can view URL history by tapping arrow behind address window.

### **Contents Window**

You can view a page in this window.

### **Status Window**

Status window shows the status of access process.

---

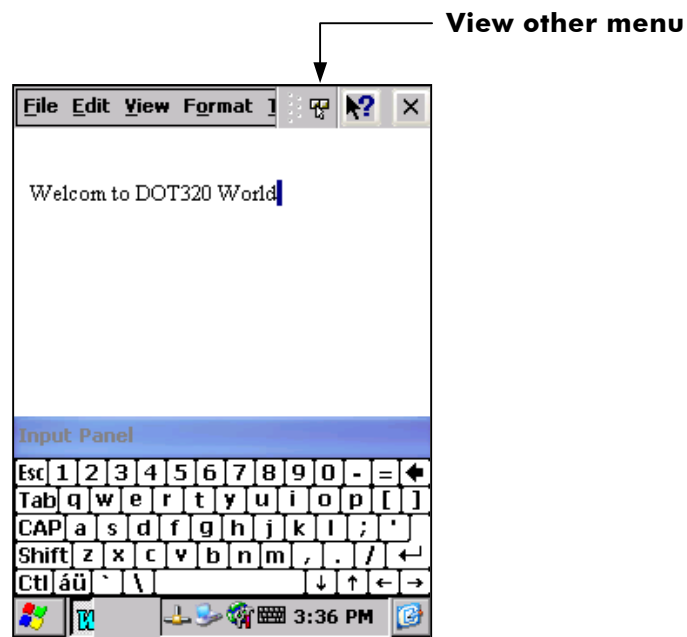




## Microsoft WordPad

You can create or edit documents and WordPad templates. The buttons and menus are similar to Microsoft Word.

WordPad documents are usually saved as pwd file format, but you can also save documents as .rtf or .doc.



Microsoft WordPad provides two types menu: file menu and icon menu.

### File Menu

#### File

- ✓ New: makes a new document. You can also make a new document from a template.
- ✓ Open: opens an existing file. You can open files with following formats: TXT, DOC, and DOT.
- ✓ Save: saves the current document. You can save as WordPad documents (\*.pwd), Word 97/95/6.0 compatible documents (\*.doc), or Word 97/95/6.0 compatible template (\*.dot).
- ✓ Password: You can set a password for a document for security.

To set a password:

1. Select File > Password.
2. Enter and verify the password.
3. Select File > Save to retain the password.

- ✓ Print: print current document. To use print function, you must connect your DOT 320 to desktop PC and set up printer.
- ✓ Recent Files: Recent Files shows documents opened recently.
- ✓ Close: close and exit WordPad.

## **Edit**

- ✓ Undo: undoes action.
- ✓ Redo: redoes action. Available after undo.
- ✓ Cut: cuts selected text or objects.
- ✓ Copy: copies selected text or objects.
- ✓ Paste: pastes cut/copied text or objects.
- ✓ Clear: deletes selected text or objects.
- ✓ Select All: selects all texts or objects in a document.
- ✓ Find: finds a text. Enter a keyword and tap Find Next. There are two options: Match whole words and Match case.
- ✓ Find Next: finds next matched text.
- ✓ Replace: finds text and replaces with another text.

## **View**

You can select either normal or outline view.

- ✓ Normal: normal view. Document is shown as real.
- ✓ Outline: outline view. You can see an outline of a document.
- ✓ Wrap to Window: wraps WordPad to window.
- ✓ Full Screen: sets to full screen mode.
- ✓ Zoom: zooms in or out. You can also use custom zoom level.

## **Format**

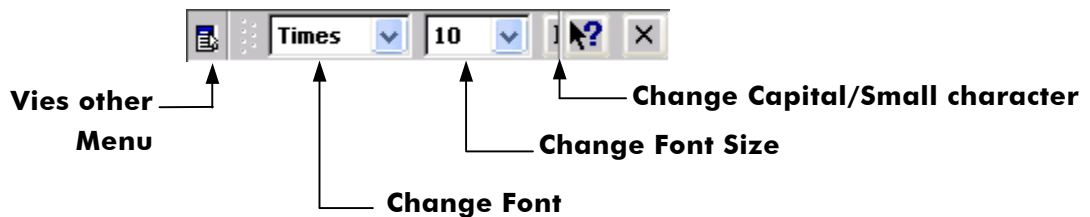
- ✓ Font: set font. You can set font of selected text. Select font, font size, color, and font style.
  - ✓ Tap Apply Default to restore the default setting, and tap Set as a Set as Default to use this default setting.
  - ✓ Paragraph: sets paragraph of selected text. Select Alignment (Left, Right, or Center), Style and indentations. Tap Tabs for setting tab, then Tabs window appears.
  - ✓ Tabs: sets tabs. Enter tab stop position and tap set.
-

## Tools

Insert Symbol: inserts symbols. Select font and select symbol to insert. You can find symbols quickly using Subset of fonts.

To change icon menu, click See Other Menu icon. You can change font and size of a character, and select Capital/Small character easily and quickly.

You can move menu by tap-and-drag.



## Converting Document Format

If an e-mail program such as Inbox is installed on your DOT 320, and you receive an attached Word document or template created in Word version 6.0 or later, WordPad will convert the file to open with your DOT 320. To convert the document, simply open the attachment in your e-mail program or open the file in WordPad. Converting proceeds automatically.

During conversion, some formatting attributes may be changed or lost. To avoid losing attributes, save a document in a different file name, then close the document.

Changes caused by Word document conversion

- a. **Borders and Shading**  
Borders and shading are not displayed in WordPad, but are restored when converted back to a Word document. Shading is not restored when used in a table, but simple borders are restored.
- b. **Character formatting**  
Bold, italic, strikethrough, superscript, subscript, and hidden text are retained and displayed. Other effects are changed or removed.
- c. **Colors**  
Colors are retained and mapped to colors available on your device.
- d. **Fonts and font sizes**  
Fonts not supported by your DOT 320 are mapped to the closest font available in WordPad.

**e. Page formatting**

Headers, footers, footnotes, columns, page set-up information, and style sheets are removed during conversion to WordPad. WordPad supports built-in headings.

**f. Paragraph formatting**

Tabs, alignment, bullets, indentation, simple numbered lists, and paragraph spacing are retained and displayed in WordPad.

**g. Pictures**

Pictures are removed during conversion.

**h. Table of Contents**

Table of Contents and some formats are preserved. However, any text set at right-aligned tab stops may wrap to the next line.

Index text and some formats are preserved.

Tables appear as a tab-delimited text. Cells containing wrapped text, tabs, or paragraph markers may be difficult to read. Simple tables are displayed accurately and restored when you convert the WordPad file back to a Word document.

OLE Objects are removed during conversion.

---



## Transcriber

The Transcriber (or Character Recognizer) is an on-screen handwriting application that interprets the strokes of your stylus on the screen into typed letters in the active document. You use the stylus to write in the input panel just as if you were writing on a piece of paper. This chapter will describe How to use and customize Microsoft Transcriber as bellows.

### Using Microsoft Transcriber

- ✓ Transcriber Features
- ✓ Starting Transcriber Program
- ✓ Selecting Text
- ✓ Editing Text
- ✓ Transcriber Gestures
- ✓ Alternates List
- ✓ Transcriber Keyboard
- ✓ Transcriber Tooltray Icons
- ✓ Transcriber Correction Window
- ✓ Transcriber Calculator

### Transcriber Features

1. Microsoft Transcriber is the natural handwriting recognition solution you're your Windows® CE device. It recognizes words from its integrated dictionary, and allows you to write in cursive, print or mixed handwriting.
  
2. The Letter Shapes Selector is for optimizing recognition to your own handwriting style.

Transcriber works transparently in the background of all Windows® CE applications providing handwriting input, while taking away no precious screen space.

---

## Starting Transcriber Program

Start Transcriber by double tapping Transcriber icon in the Main windows. When Transcriber is running, you will see the 'hand with a pen' icon in the task bar. When Microsoft Transcriber is active, the 'hand with a pen' icon will have a dark background.



Activated Transcriber icon



Inactivated Transcriber icon

## Selecting Text

When Microsoft Transcriber is active it interprets pen movement across the screen as handwriting input. There are two methods of selecting text:

1. Double-tap the desired text. This will temporarily suspend Microsoft Transcriber ink so you can perform actions such as dragging windows, icons, scrollbars, etc. Note: some applications may open a context menu if you wait even longer.

For Selecting a phrase, triple-tap the desired text or phrase. You can select the phrase.

2. Alternatively, you can make a selection (text, menu items, etc.) or drag (icon, scrollbars, etc.) by drawing a line across the selection and holding the pen still for a second at the end. The ink will disappear and the desired block becomes highlighted, or the dragged object will move to the pen tip location.

## Editing Text with Transcriber

Transcriber provides convenient gestures for text editing. They allow you to remove, capitalize, and perform cut/copy/paste operations with just a stroke of the pen.



**Enter:** Equivalent to pressing "Enter" on the keyboard. Make sure that the horizontal part of the gesture is at least two times longer than the vertical part.





**Space:** Inserts a space at the current text cursor position. Make sure that the horizontal part of the gesture is at least two times longer than the vertical part.





**Backspace:** Equivalent to pressing "Backspace" on the keyboard. To perform the gesture, draw a line from right to left.


---


 **Quick Correct:** This gesture opens the alternates menu or the Transcriber keyboard. To perform this gesture, draw a line straight down then back up again. If a word is selected the alternates menu will open. If no text is selected, this gesture launches the Transcriber Keyboard.

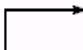
 **Case Change:** Changes the capitalization of a selected letter, word or block of text. To perform this gesture, draw a line in an upward motion.


 **Undo:** Equivalent to pressing "Ctrl-Z" in most applications. To perform this gesture, draw a line straight up then retrace the same line back down.

 **Copy:** Equivalent to pressing "Ctrl-C" in most applications. To perform this gesture, draw a line from left to right then retrace the same line back to left.

 **Cut:** Equivalent to pressing "Ctrl-X" in most applications. To perform this gesture, draw a line from right to left then retrace the same line back to right.

 **Paste:** Equivalent to pressing "Ctrl-V" in most applications. To perform this gesture, draw a line starting from the bottom going up to the right and without lifting the stylus continue the line back down to the right.

 **Tab:** Equivalent to pressing the "Tab" key. Make sure that the horizontal part of the gesture is at least two times longer than the vertical part.

 **Correction:** Opens the Microsoft Transcriber Correction Window. To perform the gesture, draw a large checkmark.

---

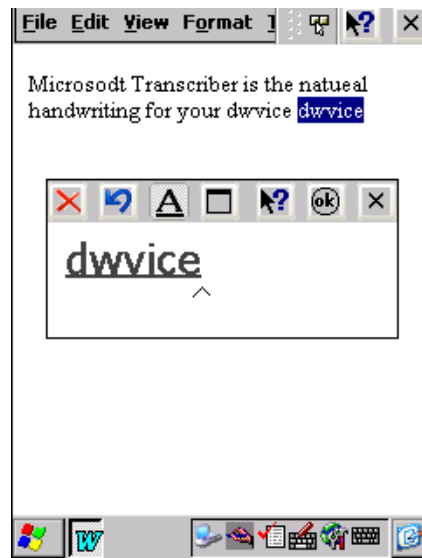
## Alternates List

If Transcriber does not recognize a word, you can use the alternates list to quickly correct the error. To use this feature:

1. Highlight the incorrect word.
2. Use the Quick Correct Gesture (a vertical line from top to bottom, retraced back to the top) to open the Alternates list.

## Transcriber Correction Window

The Correction Window allows you to edit any highlighted text on your screen. This feature is useful for correcting handwriting mistakes or recognition errors.



To correct an error, highlight the character, word, or phrase, and then open the Correction Window in one of the following ways:

1. Tap the Correction button in the Task Bar.
2. Use the Correction gesture.
3. Use the Quick Correct gesture, which brings up the Alternates List. "Go to Corrector" is one of the listed options.

The Correction Window includes these toolbar buttons:

**Delete:** Tap this toolbar button to delete the highlighted text.

**Undo:** Tap this toolbar button to cancel the previous action.

**Text/draw:** Tap this toolbar button to indicate with underlines any misspelled words.

**Full screen:** Tap this toolbar button to enlarge the Correction Window to fill the

---



screen.

**Help:** Tap this toolbar button to open the Transcriber help file.

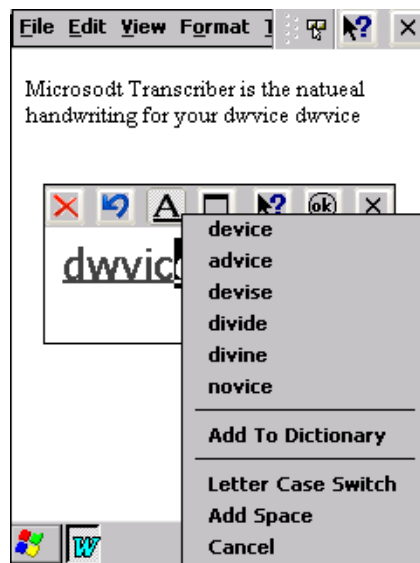
**Exit:** Tap this toolbar button to close the Correction Window without saving any changes.

**OK:** Tap this toolbar button to close the Correction Window and save your changes.

Write directly over a letter or word to change it, and then tap OK to close the Correction Window and save your corrections to your document.

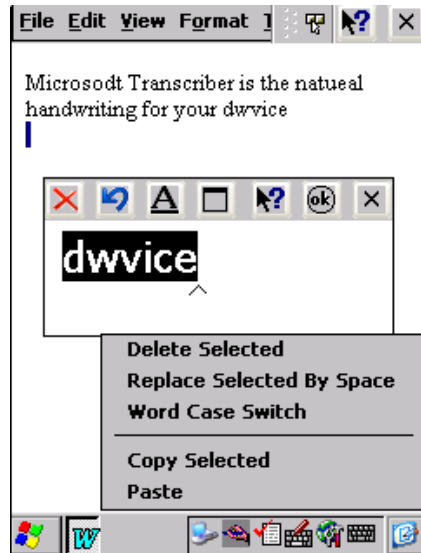
Once the Correction Window is open, you can make corrections in any of these ways:

Double-tap a letter or word in the Correction Window to open the Alternates menu where you can:



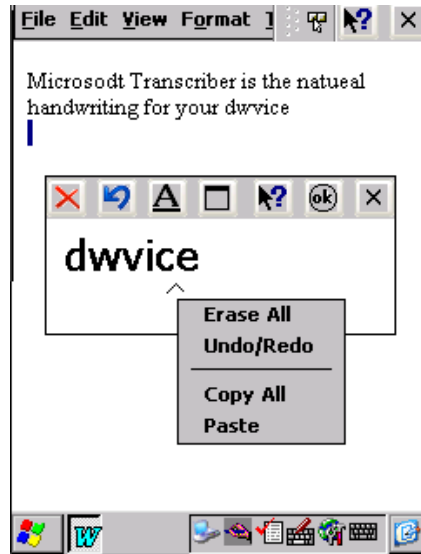
1. Select an alternate word from the list provided.
2. Add the selected word to Transcriber's dictionary.
3. Change the case treatment of the selected text.
4. Insert a space in front of the selected text.
5. Cancel any corrections you made in the Correction Window.

Select a word or letter, then tap the caret underneath the text to open a menu where you can:



1. Delete selected text.
  2. Replace selected text with a space.
  3. Change the case treatment of the selected text.
  4. Copy the selected text.
  5. Paste text from the Clipboard into the highlighted space.
-

Double-tap the Correction Window in an area that is not directly over a word or the caret to open a menu where you can:



1. Erase all text from the Correction Window and screen.
2. Cancel the previous action.
3. Copy all text in the Correction Window to the Clipboard.
4. Paste text from the Clipboard into the Correction Window.

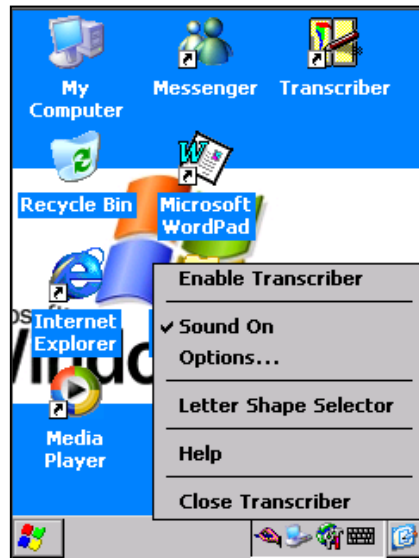
### **Transcriber Calculator**

Transcriber has built-in calculator functionality capable of recognizing and completing simple mathematical equations. This means that you do not have to open the separate Calculator application when you need to perform a simple calculation. To use this feature, write the formula like you would text. For instance:  $2+2=$ . Transcriber will recognize your ink and return the answer with your equation as text. Example:  $2+2=4$ .

---

## Microsoft Transcriber Options

You can access the configuration dialog boxes by double-tapping or tap-and-holding the Transcriber icon from the Task Bar and choose Options from the pop-up menu.



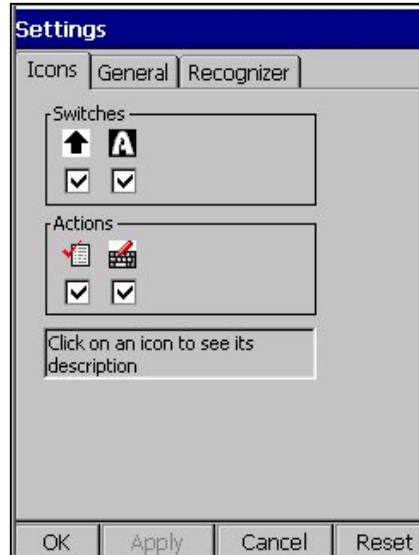
### Enable Transcriber:

Returns Transcriber to the active state.

### Sound On:

Unchecking the Sound On Box will mute Microsoft Transcriber sounds.

## The Icons Options Dialog



**Writing Orientation:** The arrow points 'upwards' relative to the selected direction of writing. You should always write perpendicular to the direction of the arrow.



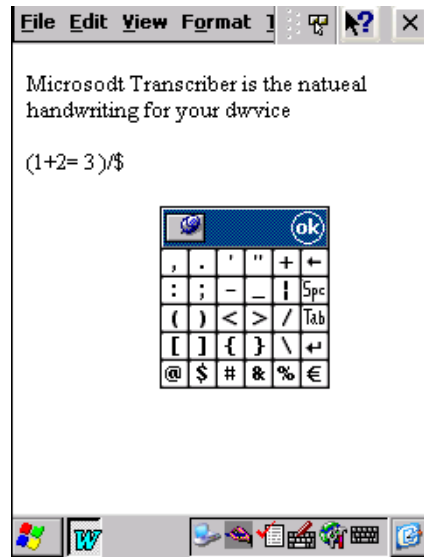
**Recognition Mode:** Choose from unrestricted 'a' (all symbols/words allowed), uppercase 'A' (everything you write is automatically capitalized) and numeric mode '12' (numerals and some letters allowed)



**Correction Window:** Makes correction easier by isolating words or phrases in a separate window.



**Transcriber Keyboard:** Allows the inputting of punctuation and other symbols that may be difficult to write.

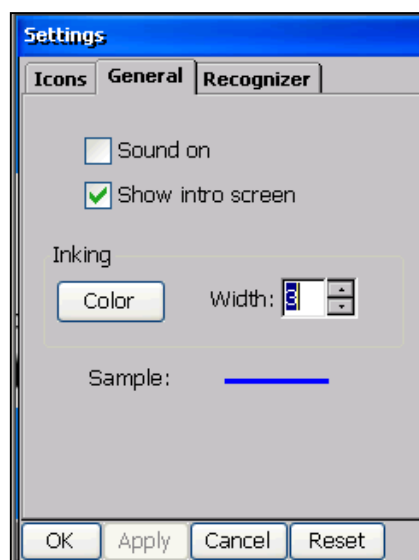


By using the Quick Correct gesture or the 'keyboard' button in the tooltray when no text is selected, you can open the Microsoft Transcriber Keyboard. The Keyboard provides an easy way to add punctuation or a special symbol to the existing text. The keyboard will remain visible until you tap the OK button. To make the keyboard close automatically after entering a symbol, tap the Push Pin button in the upper left hand corner of the keyboard.

**Note:**

Some of these icons must be enabled from the Icons tab in the Options dialog before they appear on the task bar.

## The General Options Dialog

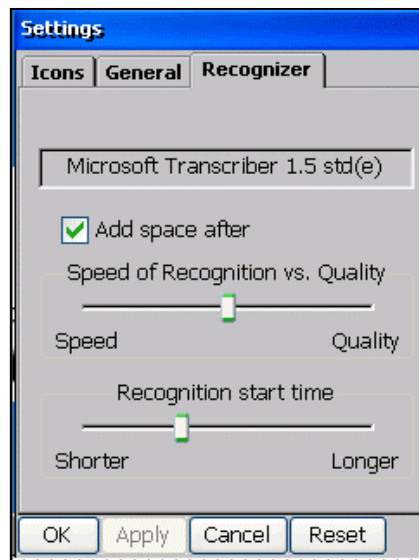


**Sound On:** Uncheck the Sound on to mute Microsoft Transcriber sounds.

**Show Intro Screen:** If selected, Microsoft Transcriber will display a short introductory screen on activation.

**Inking:** Allows you to choose the color and width of the ink that appears on the screen while writing. Tap color to change color and set width. You can preview selected color and width in Sample.

### The Recognizer Options Dialog



**Add Space After:** A space is added after each recognized word if this option is selected.

**Speed of Recognition vs. Quality:** Controls the trade-off between recognition speed and quality. Moving the slider toward Speed means faster recognition but could affect accuracy.

**Recognition Start Time:** This allows you to set the recognition start time. When the slider is in its center position, Transcriber will wait for about a second for you to complete a word (dotting your i's and crossing your t's, for example) before displaying the result. If you feel that ink disappears too quickly, move the slider

---

to the right to lengthen the start time. As you gain experience with Microsoft Transcriber, try shortening the start time to speed up the recognition process.

### **Letter Shape Selector**

Allows you to adapt the recognition engine to your personal writing style. To open Letter Shape Selector, tap and hold the Transcriber icon and select Letter Shape Selector from the pop-up menu.

You can teach Microsoft Transcriber how you write each letter and number by clicking the handwritten letter shape and selecting whether you write the character in that particular fashion 'often', 'rarely' or 'never'. Since Transcriber will have fewer letter shapes to search, it will work faster and more accurately. For example, if you do not use a triangle-shaped letter 'A' as a lower case letter, check 'never'. This helps Microsoft Transcriber select the right capitalization, as it will now consider this shape to be a capital 'A' most of the time. Or, if you do not write 'Q' similar to '2', disable this way of writing 'Q' to help Microsoft Transcriber better recognize digit '2'.

Also, to view how Transcriber expects characters to be written, tap on a character you wish to explore, then click one of the pictures of this character. It will slowly redraw, showing the writing sequence.

Letter Shape Selector supports two profiles labeled 'Master' and 'Guest'. You may select which one will be used in the 'File' menu. Typically, the master profile is used by the primary user. If the device is temporarily used by another person, they should use the Guest profile. The Master user will be unaffected by the settings selected by the Guest user.

You can save or load current profile to or from a file using the Load and Save commands found on the File menu.

Use Original Settings - Resets the Letter Shape Selector to its default settings.

### **Help**

Brings up Microsoft Transcriber help file.

### **Close Transcriber**

Shuts down Microsoft Transcriber application.

---





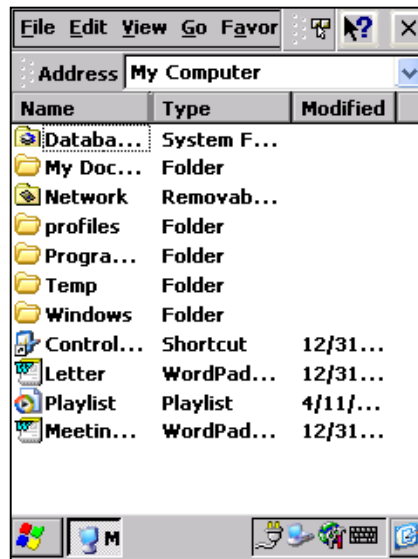
## Windows Explorer

Microsoft Windows Explorer works almost the same on your DOT 320 as it does on your PC.



### NOTE:

You can access to internet by typing a URL in the Address bar.



## File Menu

### File

- ✓ Open: opens selected folders or files.
- ✓ New Folder: creates a new folder in current folder.
- ✓ Delete: deletes selected folders or files. You can multiple-delete by selecting tap-and-drag or selecting with SHIFT key.
- ✓ Rename: renames selected folders or files.
- ✓ Properties: shows properties of selected folders or files. If no folder or file is selected, Properties shows system properties.
- ✓ Sent To: sends selected folders or files to a specific folder. You can send folders or files to desktop as shortcut, My Documents, or Infrared Recipient.
- ✓ Receive: receives folders or files using Infrared Recipient.
- ✓ Close: closes Windows Explorer.

## **Edit**

- ✓ Undo: undoes action.
- ✓ Cut: cuts selected folders or files. You can select both folders and files at the same time by tapping-and-dragging or selecting with SHIFT key.
- ✓ Copy: copies selected folders or files.
- ✓ Paste: pastes folders/files cut or copied to current folder.
- ✓ Paste Shortcut: creates shortcut of folders/files cut or copied.
- ✓ Select All: selects all files and folders in current folder.

## **View**

Address Bar: shows up address bar in Windows Explorer.

View Type: change the type of view.

- ✓ Large Icons: shows folders and files with large icons.
- ✓ Small Icons: shows folders and files with small icons.
- ✓ Details: shows folders and files with detailed information: Name, Size, Type, and Modified date.
- ✓ Arrange Icons: arranges icons in current folder. Available when Large Icons or Small Icons are used.
- ✓ Refresh: refreshes current folder.
- ✓ Options: sets up Window Explorer options. You can set hidden files to show or not, and hide file extensions.

## **Go**

- ✓ Back: back to previous folder.
- ✓ Forward: forward to subsequent folder.
- ✓ My Documents: shows My Documents.
- ✓ History: shows history. History will clear after closing Windows Explorer.

## **Favorite**

- ✓ Add to Favorites: adds the shortcut of current folder to favorites.
  - ✓ Organize Favorites: organizes favorites.
  - ✓ To move to icon menu, tap See Other Menu.
-

## **Icon Menu**

- ✓ Back: back to previous folder.
  - ✓ Forward: forward to subsequent folder.
  - ✓ Up: up to parent folder.
  - ✓ Delete: deletes selected folders or files.
  - ✓ Properties: shows properties of selected folder of files.
  - ✓ View type: selects the type of view.
-



# 11. Appendix

## Specification

The Hardware and the device power specifications are as follow:

<b>Specification</b>	
OS (Operating System)	Windows CE.NET
Processor	Intel StrongARM SA1110
Memory RAM	64MB SDRAM
Memory FLASH	32MB FLASH (Extendable)
Audio / Voice	Stereo Audio Output Phone Jack, Speaker, Microphone
Compact Flash Slot	Support Compact Flash type I/II
Infrared Communication Port	IrDA standard, 115.2Kb per second
Notification	1 LED
Serial Communication Ports	1 port
USB Communication Port	1port (USB Communication)
Display	64K color 16-bit reflective TFT-LCD, 3.5 inch
Device Power	AC/DC, 1,100mAh Rechargeable Lithium Ion Battery
Dimension (H×W×D)	52 × 30.8 × 6.9 inch (132×78×17.5mm)
Weight	5.5 oz / 156g (Including Battery)

<b>Battery Specification</b>	
Type	Li-ion rechargeable
Capacity	1,100 mAh
Battery Cutoff	3.0 V
Battery Recharge Time	Within 3 hrs
Battery Management	S/W
Battery Life	500 cycles!

<b>Battery Charger Specification</b>	
AC Supply	100 ~ 240 V
Desktop/DC Power	regulated 4.2 V

---

## Troubleshooting

This chapter provides the tips for better use of the DOT 320 and the troubleshooting solutions. This chapter deals with problems related to the following.

- Battery Power
  - Reset
  - Basic Problems
  - Data/File Backup
  - Synchronization with the PC
  - IrDA Communication
  - Maintenance
-

## Battery Power

To prevent an unexpected system fault of DOT 320 due to a power problem, refer to the following.

Using DOT 320 for the first time	When you unpack DOT 320, the battery may have been discharged. Be sure to charge the battery fully with the battery charger before use.
Charging the battery	When charging the battery, be sure to check that the battery charger and DOT 320 are connected properly and that the battery charger is well connected to the electric outlet.
Batter Low icon appears on the task bar, or the battery warning is displayed in the dialog box	Charge the battery using the battery charger. The DOT 320 may be used while charging the battery.
Device has lost power while the power is on	Since the battery power is very low, charge the battery for a certain time before using DOT 320. If DOT 320 is left uncharged when the battery power is very low, the power will not be supplied to the CPU of DOT 320, and DOT 320 will be hardware reset, resulting in loss of all data and files stored in DOT 320.
DOT 320 will not be in use for a long time	Turn off the power of DOT 320 using the power button. Tap Start > Settings > Control Panel > Power > Power Off and set the power to be turned off if DOT 320 remains idle for a certain time for efficient use of power.
Saving power	Tap Start > Settings > Control Panel > Display > Backlight and set the LCD Backlight to be turned off automatically when DOT 320 is not in use to save the battery power. Also, tap Start > Programs > Utility > Backlight to adjust the brightness of the LCD Backlight.
Automatic power-off does not work	When DOT 320 is connected with the PC, the power is not turned off automatically. Therefore, while DOT 320 is in connection with the PC, connect the battery to the docking cradle.
Insufficient power warning appears while using CF Card	Remove the CF Card from DOT 320 and recharge DOT 320 using the battery charger.
Power is lost during use	DOT 320 has turned off the power automatically due to insufficient battery power and has entered the safety mode. Do not use DOT 320 forcibly, but use it after recharging the battery.

**Reset**

Software reset	<p>If a program cannot be terminated even by the Task Manager when it has stopped running, or if DOT 320 cannot be synchronized despite several attempts to access the desktop PC, DOT 320 can be software reset by briefly pressing the Reset button on the bottom of DOT 320.</p> <p>To software reset DOT 320, the Reset button should be pressed for less than a second; otherwise, DOT 320 may be hardware reset. If DOT 320 is hardware reset, all files and data in DOT 320 are lost.</p>
Hardware reset	<p>If DOT 320 does not respond to any input, nor can the problem be solved by software reset, DOT 320 should be hardware reset.</p> <p>To hardware reset DOT 320, press the Reset button on the bottom of DOT 320 and hold it for more than 4 seconds. Then, DOT 320 battery power is shut down and DOT 320 becomes down. Press the Reset button again shortly, then DOT 320 is connected with the battery power and DOT 320 is hardware reset.</p> <p>Since the hardware reset will result in loss of all files and data, it is recommended that the data and files stored in DOT 320 should be backed up periodically in the desktop PC, CF memory card, or flash ROM of the DOT320.</p>
Reset by battery fault	<p>If DOT 320 does not work due to full discharge of the battery, it should be recharged using the battery charger. Do not attempt to operate DOT 320 in full discharge condition. When the battery is recharged, DOT 320 is hardware reset automatically.</p>

---



## Basic Problems

Dark display screen	If you press the power button too long, the LCD backlight may be turned off. In such a case, press-and-hold the power button again to turn the backlight back on.
	The screen may be dark because the LCD backlight level is set too low. Tap Start > Programs > Utility > Backlight and adjust the backlight level.
	The backlight may be turned off in the Automatic Backlight Off Mode. To keep the backlight always on, tap Start > Settings > Control Panel > Display. And tap Backlight tab and uncheck Turn off backlight.
Stylus pen input error	The display screen may not be calibrated properly. Tap Start > Settings > Control Panel > Stylus. And tap Calibration tab and recalibrate the screen.
	If the screen does not respond to a double-tap, tap Start > Settings > Control Panel > Stylus. And tap Double-Tap tab and adjust the Double-Tap Grid.
Slow program speed	The program may become slow due to too many programs running at the same time. Reduce the number of running programs.
	The program speed may be slow due to insufficient program memory of DOT 320. Tap Start > Settings > Control Panel > System. And tap Memory tab and expand the program memory area with the slide bar. If the storage memory area occupies too much space, back up the programs in the storage area to the PC or the CF memory card to empty the storage area, and expand the program memory area.
Power failure of DOT 320 even when connected with the battery charger	DOT 320 may be turned off automatically if the battery is discharged fully. In such an instance, recharge the battery for about thirty minutes and then turn on the power. Continue to recharge the battery.
	If the battery is not charged, check the connection between the battery charger and DOT 320.
	Using DOT 320 forcibly when the battery is discharged may cause DOT 320 to break down. Be sure to recharge the battery before trying to use DOT 320.

---

Automatic power shut down	If the battery power level is very low, the power of DOT 320 is shut down automatically. For details, refer to the troubleshooting for problems related to battery power.
Automatic device suspension or LCD backlight off	When DOT 320 is not in use for a certain period, it enters the Suspend Mode or the LCD Backlight Off Mode automatically to save the power. To check the settings, tap Start > Settings > Control Pane > Power and tap Power Off tab. Or Start > Settings > > Control Panel > Display. And tap Backlight tab.
Cannot memorize password	If you have set the password in Start > Settings > Control Panel > Password and checked the Enable password protection upon power-on checkbox, the password input window appears on the display screen when DOT 320 is powered on. If you enter the password correctly, the screen is switched to the main window, but if you do not remember the password, you cannot start DOT 320. In such an instance, DOT 320 has to be hardware reset. Therefore, the password must be memorized.
Owner information display	When DOT 320 is powered off/on, the owner information may appear. To switch to the main window, tap the display screen with the stylus pen. To modify the owner information, tap Start > Settings > Control Panel > Owner.
Small volume or no sound	Tap Start > Settings > Control Panel > Volume & Sounds. Then tap Volume and check the sounds for device operations. Also, adjust the volume control bar to left/right.
Too small text size	During running of a program such as MS WordPad or Internet Explorer, the text may be too small to read comfortably. For WordPad, tap View > Zoom from the menu bar and select a desired size. For Internet Explorer, tap View >Text Size in the menu bar and select a desired size.
Date/Time setting	Start > Settings > Control Panel > Date/Time Program can manage the time efficiently.  Tap Date/Time to display the calendar, time setting window, and time zone window. First, select the desired location from the time zone. Then, set the year, month and day in the calendar window. Lastly, set hour:min:sec and am/pm in the time setting. Tap the Apply button to complete the setting.

---

	<p>Tap the clock. You can set the time of the Home location and the Visiting location. Home shows the value set in the Date/Time, while Visiting shows the time of the location you visit for business or for pleasure. The method of setting the time is the same for Date/Time. Check either Home or Visiting radio box to make DOT 320 operate on the time of the checked location.</p>
	<p>The current time may be displayed on the task bar of the main window. Press and hold down the task bar with the stylus pen to display the R-Button Function Menu. Tap Properties and then Show Clock to display the current time on the task bar. The current time refers the time of the location checked by the Home/Visiting radio box.</p>

**Data/File Backup**

Data/file backup	<p>Since DOT 320 may need to be hardware reset due to an unexpected problem, be sure to back up the data/files in the desktop PC, CF memory card, or flash ROM.</p>
	<p>To back up the data/files in the desktop PC, connect DOT 320 to the PC. For details about how to connect, refer to 4. Connecting to Desktop PC. Use the Copy/Paste menu of the Explorer of the ActiveSync or the Windows Explorer of the desktop PC to make copies of DOT 320 data/files in the backup folder (created by the user) of the desktop PC.</p>
	<p>Insert the CF memory card in the CF type expanded card slot. Tap Start &gt; Programs &gt; Windows Explorer, and then tap Storage Folder. Tap New Folder from the File Menu, and create a backup folder. Then, copy the data/files in DOT 320 and paste them in the backup folder of the CF memory card.</p>
	<p>The data/files can be copied to the flash ROM of DOT 320. In this case, it is recommended that only essential PIMs data and notification data should be copied. Since the flash ROM contains the programs of DOT 320, its memory capacity available is limited. Use Start &gt; Programs &gt; PIMS &gt; PIMS Backup, or run the Windows Explorer. Tap PIMS Backup to display the files to be backed up in the upper window. Select the desired data file and select Flash Disk Storage. Then, tap Backup menu to complete the backup. To restore the files, select Storage to display the files to be restored in the bottom window. Select the desired data file and tap the Restore menu to restore the PIMs data of DOT 320.</p>
	<p>It is recommended that restoring the files using the PIMS Backup Program should be performed only when the PIMs data have been lost after hardware reset or due to an unexpected problem.</p>

---

## Synchronization with the PC

Cannot connect to desktop PC	The USB cable may not be connected to the desktop PC or may be connected to the desktop PC incorrectly. Check if the USB cable of the docking cradle and the desktop USB port are connected properly. Check if DOT 320 is inserted in the docking cradle correctly.
	The options of the ActiveSync may not be set up correctly. Check the settings. For details, refer to the Help of the Desktop ActiveSync.
	Check the communication mode setting of the Desktop ActiveSync.
Cannot synchronize or cannot maintain the connection after synchronization	Check if the Microsoft Outlook is running properly on the desktop PC.
	Since it may take some time for synchronization due to characteristics of the Windows CE.NET, wait until synchronization is complete after inserting DOT 320 in the docking cradle.
	If connection fails despite continued attempts, remove DOT 320 from the docking cradle, wait for a while, and insert DOT 320 again in the docking cradle. Wait for synchronization.
	If synchronization still fails, software reset DOT 320 and try the above procedure again.
	Reboot the desktop PC, software or hardware reset DOT 320, and try the above procedure.
	If the problem persists to continue, visit the Microsoft web site to inquire about the ActiveSync or refer to Q&A.

**IrDA Communication**

IrDA communication does not work	Align the IrDA ports of DOT 320 and other device. Keep the distance within 1 m.
	Clear any objects that may hinder the communication between DOT 320 and other device.
	Check that DOT 320s are equipped with the IrDA OBEX communication protocol. Otherwise, the communication between DOT 320s cannot be achieved.
Disconnection during file transfer	Communication may be discontinued during the transfer of a large file. In such an instance, disconnect the connection, connect it again, and try the file transfer.
	Connection cannot be made among three or more devices at a time, but only between two devices.
IrDA communication control	Place DOT 320 in normal positions and tap Quick Link Icon > IR Send_Receive menu from the task bar of the main window. The program will automatically search DOT 320 for communication and display its information. Tap the Connection menu and perform the send/receive functions.

---

**Maintenance**

DOT 320 Power Management	Since the expansion CF card consumes a lot of power, use the external power source whenever possible. Remove the expansion CF card when not using it.
	When connecting with the desktop PC, connect the battery charger to the docking cradle.
	When DOT 320 is not in use, set DOT 320 to enter the automatic suspend mode or press the power button to turn DOT 320 off.
	Adjust the backlight level to save power.
DOT 320 Management	Do not use DOT 320 in places of high humidity or high temperature.
	Use the leather protector case to protect DOT 320 from an external impact.
	Avoid exposing DOT 320 in direct sunlight for an extended time.
Data/File Management	Back up the data/files when traveling for a long time.
	Back up the data/files periodically.

## Glossary

**Backup.** A duplicate copy of your DOT 320 files and data that is stored on your desktop PC, on a CompactFlash card, or in the hp safe store folder.

**Battery charger.** An external power supply that converts ac power from a standard household electrical outlet to the low-voltage dc power required to operate your DOT 320.

**CompactFlash.** A removable media for high-performance memory cards and other peripheral devices such as modems and NICs.

**Cradle.** A desktop base for your DOT 320 that allows instant connectivity to a desktop PC. The cradle remains connected to your desktop PC, even when you remove your DOT 320.

**DHCP (Dynamic Host Configuration Protocol).** A protocol that assigns a dynamic IP address to your DOT 320 each time you connect to a network.

**Dial-up connection.** A connection between your DOT 320 and another computer by modem. You can have a dial-up connection with an ISP, a network, or with a modem attached to a PC.

**Direct connection.** A connection between your DOT 320 and another computer by means of the cradle or infrared port.

**DNS (Domain Name System).** An Internet service that translates domain names into IP addresses.

**Driver.** A control program that enables a computer to work with a specific peripheral device.

**Flash ROM.** See ROM.

**IMAP4 (Internet Messaging Access Protocol v4).** A protocol that enables a computer to retrieve messages from a mail server.

**Infrared port.** A communication port that uses optical (infrared) signals rather than wires or cables to transmit data.

**Internet.** A worldwide network of computers offering services such as email, the Worldwide Web, FTP, Usenet news, and others.

**Intranet.** A network that offers services similar to the Internet, but usually accessible only to users within a single company or organization.

---



**IP (Internet Protocol).** The standard by which packets of information are transmitted over the Internet.

**IrDA (Infrared Data Association protocol).** An established standard for infrared communications between computers and other peripherals and devices.

**ISP (Internet service provider).** A commercial business that provides Internet access to individuals or businesses, usually for a fee.

**LAN (local area network).** A group of computers, usually in close proximity (either in the same building or in buildings in close proximity), that are linked together to share files and exchange data.

**Modem.** A communication device that enables a computer to transmit data over telephone lines.

**NIC (network interface card).** A card installed in a computer so that it can be connected to a network. NICs can provide a dedicated, full-time connection to a network.

**Partnership.** An established relationship between your DOT 320 and your desktop PC for the purpose of synchronizing and transferring data.

**PIM (personal information manager).** An application or set of applications that organizes information such as addresses, appointments, and notes.

**POP3 (Post Office Protocol v3).** A protocol that enables a computer to retrieve messages from a mail server.

**PPP (Point-to-Point Protocol).** The default method your DOT 320 uses to communicate with an ISP or network server.

**Proxy server.** A server that sits between a client computer or Web browser and the Internet. A proxy server provides security by filtering requests and can improve performance by storing local copies of requested information.

**RAM (random access memory).** Volatile memory that can be read and written. Data stored in RAM is retained only while power is maintained.

**Remote connection.** A connection between your DOT 320 and a remote computer or server.

**Reset.** The process of restarting your DOT 320 and reinitializing the operating system. Performing a reset erases any unsaved data in open documents, but preserves data that has been saved.

**Restore.** To return your device to the state it was in when data was last backed up. This involves copying your backup data to your DOT 320.

---

**ROM (read-only memory).** Nonvolatile flash memory that contains the Microsoft Windows for Pocket PC operating system and preinstalled programs.

**Serial connection.** A cable connection between your DOT 320 and a serial (COM) port on your desktop PC.

**SLIP (Serial Line Internet Protocol).** A method of connecting to the Internet. Similar to PPP, but older and simpler.

**SMTP (Simplified Mail Transport Protocol).** A protocol for sending e-mail messages between computers on the Internet.

**Stylus.** A pen-like utensil designed for navigating on a touch screen.

**Synchronization.** The process of comparing the files or data on two computers to ensure that they contain exactly the same information.

**Touch screen.** A touch-sensitive screen that allows you to open files, launch programs, and select text by touching or tapping the screen with the stylus.

**USB (Universal Serial Bus).** A newer standard for connecting peripheral devices. USB supports relatively fast data transfer rates and can be used to connect multiple devices to a single computer.

---

## **FCC NOTICE**

**Note:** This equipment has been tested and found to comply with the limits for a Class B digital device, pursuant to part 15 of the FCC Rules. These limits are designed to provide reasonable protection against harmful interference in a residential installation. This equipment generates, uses and can radiate radio frequency energy and, if not installed and used in accordance with the instructions, may cause harmful interference to radio communications. However, there is no guarantee that interference will not occur in a particular installation. If this equipment does cause harmful interference to radio or television reception, which can be determined by turning the equipment of and on, the user is encouraged to try to correct the interference by one or more of the following measures:

- Reorient or relocate the receiving antenna.
- Increase the separation between the equipment and receiver.
- Connect the equipment into an outlet on a circuit different from that to which the receiver is connected.
- Consult the dealer or an experienced radio/TV technician for help.

**Note:** The manufacturer is not responsible for any radio or TV interference caused by unauthorized modifications to this equipment. Such modifications could void the user's authority to operate the equipment.

---