

# User Manual Guide

## *DOTh-100*

*Windows CE® .NET Ruggedized PDA*

---



DOTel. Co., Ltd.  
#412, Kolon Science Valley2,  
811 Guro-dong, Guro-gu, Seoul, Korea 152-878  
Tel. +82-2-850-3636 Fax. +82-2-850-3637  
[www.dotel.co.kr](http://www.dotel.co.kr)

Copyright ©1999 Dotel Co., Ltd. An Unpublished Work - All right reserved. No part of the contents of this documentation or the procedures described there in may be reproduced or transmitted in any form or by any means without prior written permission of Dotel Co., Ltd. or its wholly owned subsidiaries ("Dotel").

Owners of Dotel products are hereby granted a non-exclusive, revocable license to reproduce and transmit this documentation for the purchaser's own internal business purposes.

Purchaser shall not remove or alter any proprietary notices, including copyright notices, contained in this documentation and shall ensure that all notices appear on any reproductions of the documentation.

Should future revisions of this manual be published, you can acquire printed versions by contacting Dotel Customer Administration. Electronic versions may either be downloadable from the Dotel web site ([www.Dotel.co.kr](http://www.Dotel.co.kr)) or provided on appropriate media. If you visit our web site and would like to make comments or suggestions about this or other Dotel publications, please let us know via the "Contact Dotel " page.

#### Disclaimer

Reasonable measures have been taken to ensure that the information included in this manual is complete and accurate. However, Dotel reserves the right to change any specification at anytime without prior notice. Dotel is a registered trademark of Dotel Co., Ltd..

The Dotel logo is a trademark of Dotel . All other trademarks and trade names referred to herein are property of their respective owners.

Dotel is a registered trademark of Dotel Co., Ltd. and of its wholly owned subsidiaries.

Microsoft Windows®, Windows® 2000, Windows® CE .NET, Windows® NT, and Windows® XP are registered trademarks of Microsoft Corporation.

# Contents

Before You Begin.....	6
Chap1. Using The DOTH-100.....	6
1. Introducing.....	7
1.1 Features.....	7
1.2 View of the DOYH-100.....	9
2. Power.....	11
2.1 Power ON/OFF.....	11
2.1.1 Power ON.....	11
2.1.2 Power OFF.....	11
2.1.3 What is idle mode?.....	11
2.1.4 Suspend mode.....	12
2.2 Battery.....	12
2.2.1 Checking Battery Power.....	12
2.2.2 Very Low Battery Status.....	12
2.3 Removing and installing the battery.....	12
2.3.1 Removing the battery.....	12
2.3.2 Installing the battery.....	12
2.4 Battery discharging.....	12
2.5 Recharging the battery.....	12
2.5.1 Using the adapter.....	12
2.5.2 Using the Dock.....	13
2.6 Backup Battery.....	13
2.7 Disposal of the spent battery.....	13
2.8 LED Notification.....	13
3. Setting up the DOTH-100.....	14
3.1 Power On.....	14
3.2 Power Off.....	14
3.3 Adjusting the Brightness.....	14
3.4 Calibrating the screen.....	15
3.5 Adjusting the Volume.....	15
3.6 Setting up the Date and Time.....	16
3.7 Power Configuration.....	16
3.8 Schemes Tab.....	16
3.9 Memory Allocation.....	17
4. Resetting the DOTH-100.....	18
4.1 Soft Reset.....	18
4.2 Hard Reset (cold reset).....	18
5. Flash Disk.....	19
5.1 Hard reset.....	19
5.2 Soft reset.....	20
5.3 Return back to the existing place.....	21
6. Registry Backup.....	23
7. Using the keypad.....	25
7.1 Change current character.....	25
7.2 Inputting the data.....	25
7.3 Setting device though the <Fn> key.....	26

8. Using the stylus .....	27
Chap 2. Windows Program .....	28
1. Basic Information .....	28
1.1 Task Bar and Command Bar.....	28
1.2 Pop-up Menus .....	29
2. Executing a Program.....	29
3. Entering information .....	29
3.1 Using the Onscreen keypad .....	29
3.2 Using the Transcriber .....	30
4. Customizing Your DOTH-100.....	31
4.1 Adjust settings .....	31
4.2 Adding or Removing the Programs .....	31
4.3 Adding the Programs Using ActiveSync .....	31
4.4 Removing the Programs.....	32
5. Microsoft ActiveSync .....	32
5.1 Using Microsoft ActiveSync.....	32
5.2 Installing Microsoft ActiveSync on your desktop.....	32
5.3 Setting up a Partnership .....	33
5.4 Transferring Files.....	33
6. Microsoft WordPad .....	33
7. Window Media Player.....	34
8. Internet Explorer.....	34
9. Context Sensitive Help .....	35
Chap 3. Optional Module .....	36
1. 1D barcode Scanner.....	37
1.1 1DScanner(Demo program).....	37
1.2 Setting up the AT1DEmulator.....	39
2. Wireless LAN .....	41
2.1 Power on Wireless LAN.....	41
2.2 IP Information .....	42
2.3 Setting manually .....	43
2.4 Power Off Wireless Off .....	43
3. Bluetooth .....	44
3.1 To enable Bluetooth.....	44
3.2 Bluetooth Manager.....	44
3.3 Connecting Bluetooth Printer(SPP).....	44
4. 13.56 MHz Reader.....	46
4.1 Leader type.....	46
4.2 Running Multi Reader .....	47
5. GPS Module .....	49
5.1 Executing the GPS.....	50
5.2 Configuring the Port and Baud Setting for Executing the GPS.....	50
5.3 Checking the GPS status .....	51
6. GSM Module.....	53
6.1 Using the GSM.....	53
6.2 Telephone image.....	55
6.3 Function of GSM.....	55
7. Camera.....	56

8. Printer.....	58
9.1 Check the printer paper.....	60
9.2 change the printer paper.....	60
9.3 printer output steps.....	60
9. MSR.....	60
10. ICC Reader.....	61
11. Fingerprint.....	62
12.1 Registering fingerprint.....	62
12.2 Releasing Fingerprint.....	64
12. Cradle.....	65
DOTH-100 Specifications.....	66
AS Information.....	67
FCC & CE Information.....	68

## Before You Begin

This section provides you with safety information, technical support information, and sources for additional product information

### Who should read this manual?

This manual is written for the person who is responsible for installing, configuring, and maintaining the DOTH-100.

This manual provides you with information about the features of the DOTH-100, and how to install, configure, operate, and maintain it.

Before you work with the DOTH-100, you should be familiar with your network and general networking terms, such as IP address.

### Safety information

Your safety is extremely important. Read and follow all warnings and cautions in this document before you handle and operate DOTel equipment. You can be seriously injured, and equipment and data can be damaged if you do not follow the safety warnings and cautions.

#### WARNING

A warning alerts you to an operating procedure, practice, condition, or statement that must be strictly observed to avoid serious injury to the person who working on the equipment

#### CAUTION

A caution alerts you to an operating procedure, practice, condition, or statement that must be strictly observed to prevent equipment damage or destruction, or corruption or loss of data.

#### NOTICE

A notice makes you have more information while you use DOTH-100

### Notice

1. This machine is for business (Grade A)with EMI, seller or user have to be more careful with caution, you should use the purpose of using it in areas outside the home.
2. This Radio facilities have possibility which is mixed to electric wave in using.
3. This can't do life security and related services.

## Chap1. Using THE DOTH-100

This chapter introduces the DOTH-100 Mobile Computer to enhance wireless connectivity needs and contains hardware and software configuration to assist you in making the most out of your DOTH-100.

### 1. Introducing

DOH-100 mobile computer is a small, ergonomically designed mobile computer built on the Microsoft window CE NET 5.0 operating system. The PDA uses an Intel® Bulverde CPU and a 3.5" VGA, color Touch screen display. The PDA supports wireless LAN 802.11b/g (embedded module) for communication.

#### 1.1 Features

Remove all the items from the packing box, and check to make sure all the parts are present:

- 1) H-100 PDA
- 2) Lithium Ion Battery Pack
- 3) Power Adaptor
- 4) USB Sync cable
- 5) Stylus pen
- 6) Hand strap
- 7) Cradle

1



2



3



4



5



6



7



## 7. Cradle



## 1.2 View of the DOTH-100

Refer to Table 1 for a list and description of the illustrated features.

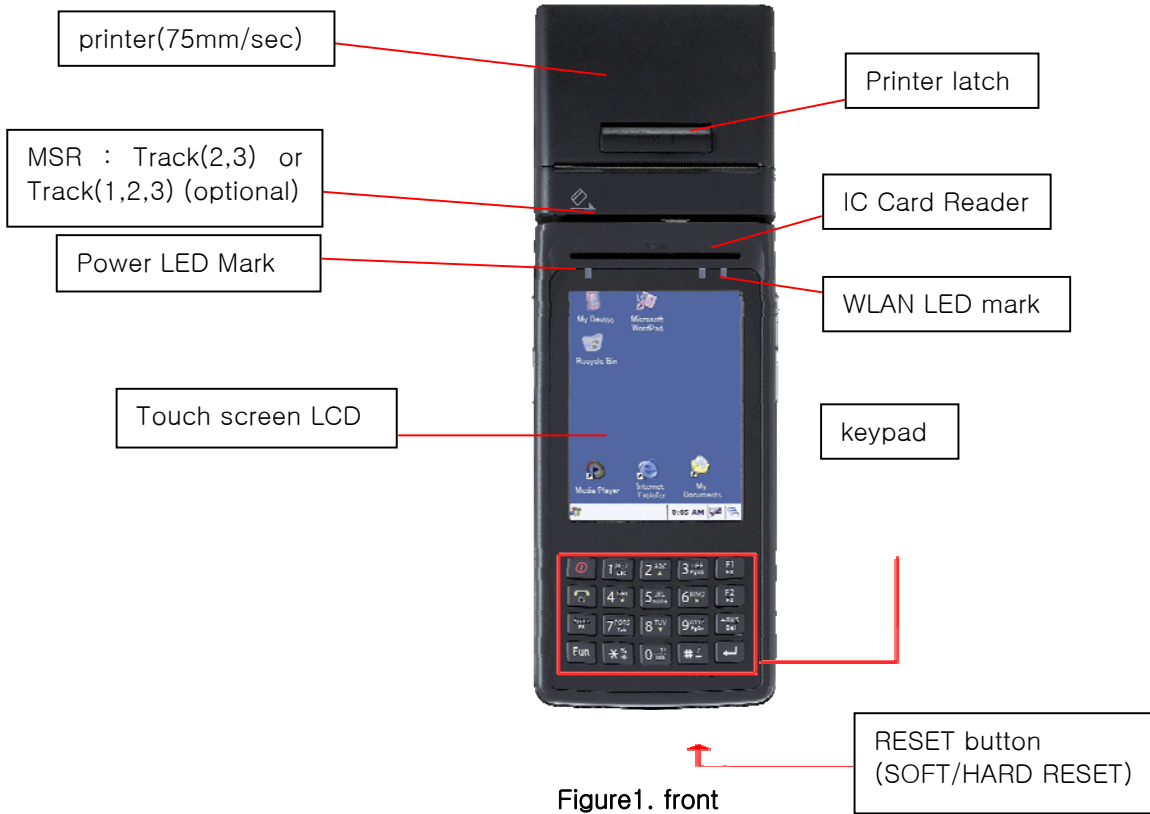


Figure1. front

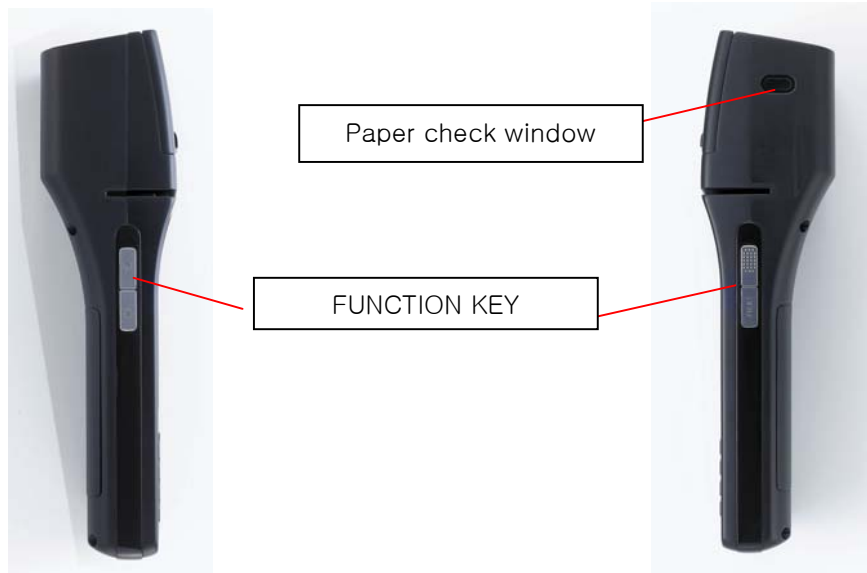


Figure2. beside

## 1.2 View of the DOTH-100

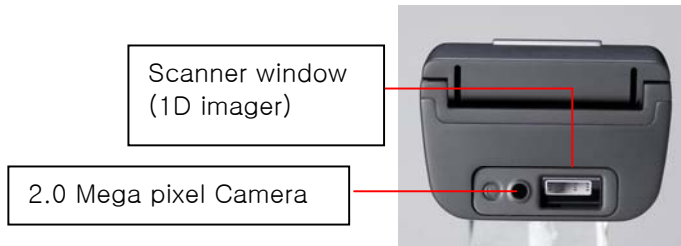


Figure3. Top



Figure4. bottom

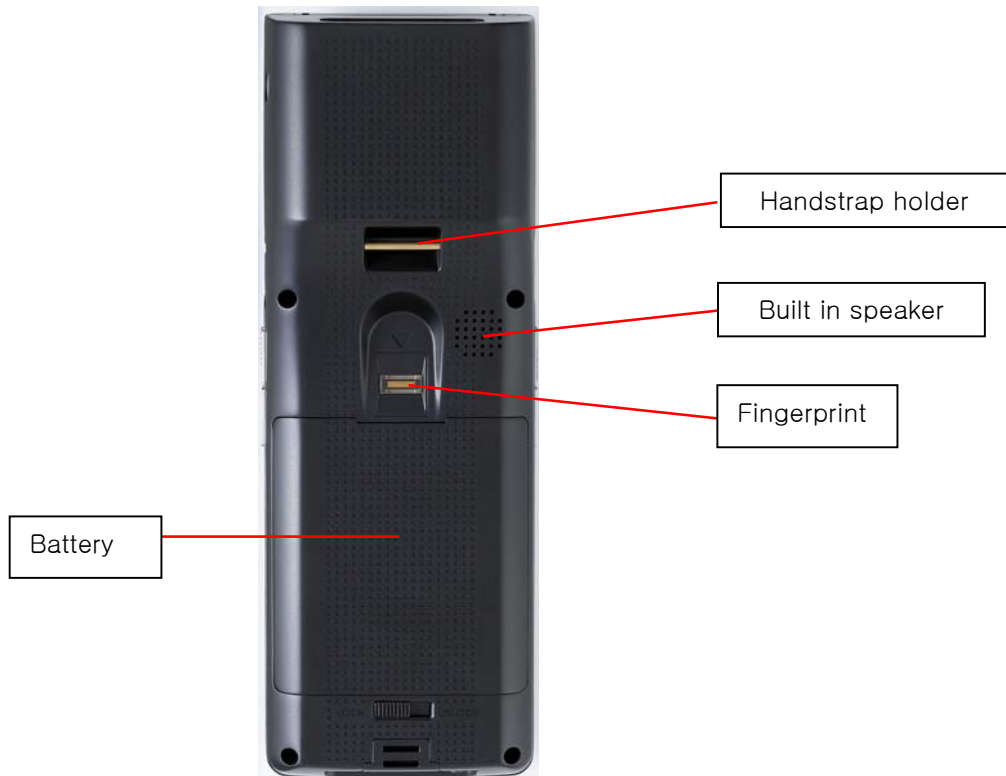


Figure5. back

## 2. Power

This section introduces the power system of DOTH-100 such as power switch and battery.

### 2.1 Power ON/OFF

#### 2.1.1 Power ON

1. Press power key, the DOTH-100 and the backlight will be on.
2. To save power and prolong the battery, the screen gets to be off, when the DOTH-100 goes into idle mode. And it is easy to resume activity. Just tap the screen or press any key on the keypad.

#### 2.1.2 Power OFF

1. Press power key, you actually suspend the DOTH-100 and turn off the display and backlight.
2. The other method: **Tap start > Suspend**

#### 2.1.3 What is idle mode?

It is the period that computer goes on without any activity for a long time, but it doesn't have influence on data

You can set up the idle mode and the PDA will go into the idle mode automatically after the interval that you set goes to the end. It helps you prolong your battery life. If you want to restart your DOTH-100 while the PDA goes into idle time, tap anywhere on the screen.

To change the time into idle mode

**Tap Start > Setting > Control Panel > Power**

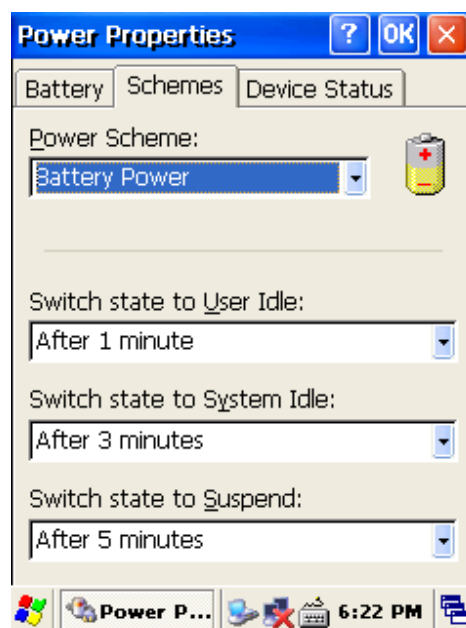


Figure 1. Setting Idle time

#### 2.1.4 Suspend mode

1. When you do not use DOTH-100 for a long time, make your DOTH-100 go into the suspend mode for saving power.
2. If you want to restart your DOTH-100, press power key.

## 2.2 Battery

DOTH-100 uses replaceable 7.4V 1,800mAh Li-ion Cell x2 Li-ion batteries.

If the battery continues to drop to the “ Low Battery Status” , the battery status LED becomes red and blinks. You need to recharge the battery.

#### 2.2.1 Checking Battery Power

You can check the battery status by using the power applet.

**Tap Start > Settings] > Control panel > Power**

The power control panel applet displays a battery power gauge.

#### 2.2.2 Very Low Battery Status

To prevent the DORH-100 from being discharged completely, your DORH-100 will be suspended, when the battery continues to get low. You need to recharge your battery before the battery continues to drop.

## 2.3 Removing and installing the battery

#### 2.3.1 Removing the battery

At first, pull out the hand scrap and then press the battery latch to the above until the battery is released from the DORH-100, then lift it out.

#### 2.3.2 Installing the battery

Insert the bottom of battery into the sunken place located in battery compartment, and press the battery latch to the above until the battery is installed completely.

## 2.4 Battery discharging

Several factors determine the life of your battery such as extreme temperatures, input devices, and your usage, but generally you can use DORH-100 for 6~12hours.

If the DOTH-100 is not on external power and battery pack is removed, it will enter suspend mode.

## 2.5 Recharging the battery

Use the adapter provided from DOTel to recharge your battery.

### Caution

**Your DOTH-100 can be damaged, in case of using the adapter that is not provided from DOTel.**

#### 2.5.1 Using the adapter

The charge/operating power can be applied to DOTH-100 by using DC adapter.

1. Connect the adapter to the power cord.
2. Connect the DC power jack to the DOTH-100.

When the battery is charging, the LED becomes red.

### 2.5.2 Using the Dock

The Dock is for charging DOTH-100, and the dock is one of which also can act as a communication port.

#### CAUTION

Make sure the DOTH-100 is firmly seated in the dock, charger, or power adaptor. If it is not firmly seated, battery charging and communication with the Host PC will NOT be initiated.

### 2.6 Backup Battery

The backup battery in the PDA is a 100mAh rechargeable battery that holds system data at least 2 hours without main battery.

#### CAUTION

If you remove the battery or the battery completely discharges, there is a two(2)hour window in which to insert a charged battery before the backup battery completely discharges and the contents of the RAM memory are lost. It is a good idea to keep your data and applications in Flash Disk for that reason. Refer to “Flash Disk” for more information.

If both the battery pack and the backup battery are allowed to discharge completely, you must recharge both batteries for thirteen (13) hours.

The backup battery is charged off the battery pack, so it is important to keep the battery pack with at least a minimal charge so the unit can maintain date, time, data, and other settings.

### 2.7 Disposal of the spent battery

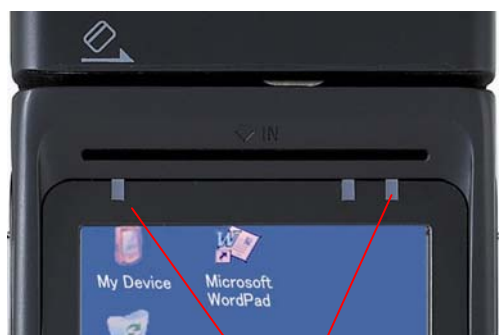
When the battery reaches the end of its useful life, the spent battery must be disposed by a qualified recycler or material handler

#### Warning

Do not mix the spent battery with the solid waste stream and keep away from children.

### 2.8 LED Notification

LED color notify status of charging, Charge complete, WLAN.



1. Charge LED
2. WLAN LED

	LED Color	Explain
Charge LED	Red	Charging
	Green	Charge complete
WLAN	Green	Receiving Data

### 3. Setting up the DOTH-100

This section describes the basic information for setting your DOTH-100.

#### 3.1 Power On

Press the **Power** key briefly to turn on the PDA. The **Backlight** comes on automatically. Press this key again briefly to turn off the PDA. To turn off the **Backlight** while the PDA goes on, press and hold the key for at least a second. This key acts to toggle the **Backlight** function off and on.

#### 3.2 Power Off

To turn the PDA off, press the **Power** key again. This action suspends the device, but does not actually turn it off. All running applications remain as you left them until you press the **Power** key again to resume operation of the device.

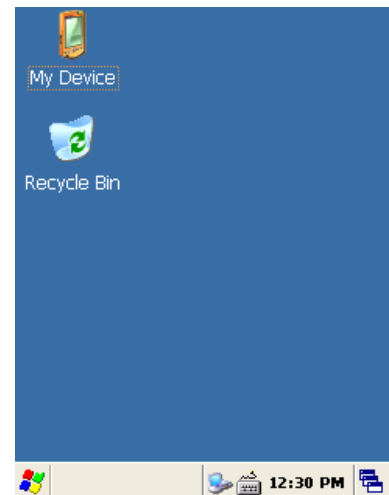


Figure 1. Background Screen

#### 3.3 Adjusting the Brightness

The DOTH-100 manufactured at the factory keeps 80% brightness, but because of several reasons such as dark environment or user's condition of eyesight, and above all, the illumination consumes much power, so that the users want to adjust the backlight.

To adjust backlight:

Tap **Start > Settings > control panel > backlight**

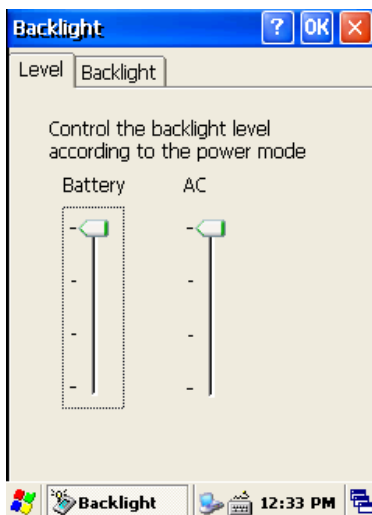


Figure 2. Adjusting Brightness

**Level** : you can adjust the brightness

**Backlight** : you can adjust the entry time into idle mode when use DOTH-100 with battery power or external power.

### 3.4 Calibrating the screen

According to user's personal treatment, and activity, applications installed in the DOTH-100 need to be set up after purchasing it.

#### Calibrating the Touch Screen

Thought the screen is already calibrated, but if you have feeling that your screen isn't responding properly to your tap, you can recalibrate it again.

To recalibrate the screen

**Tap start > Settings > Control panel > Stylus > Calibration > Recalibration**

Press and briefly hold stylus on the center of target, and repeat 5 times as the target moves around the screen. The screen counts 30 seconds after calibrating, and you can finish the recalibration to touch screen wherever you want. If you did not have any action, the screen will automatically finish the recalibration of itself.

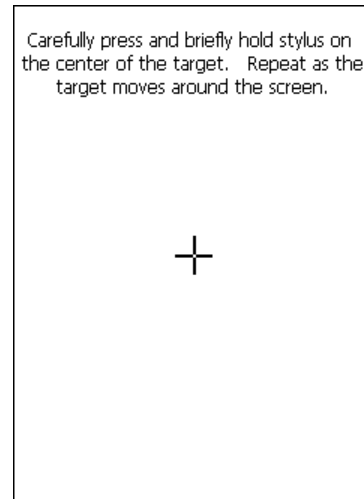


Figure 3. Recalibrating

### 3.5 Adjusting the Volume

#### Volume & Sounds

Your DOTH-100 manufactured at factory is set at the maximum volume, so you can adjust the volume if you need suitable sound.

To adjust Volume & Sounds

**Tap Start > Settings > Volume & Sounds**

**Volume tap:** tap to adjust Volume

**Sounds tab:** tap to set the imitated sounds

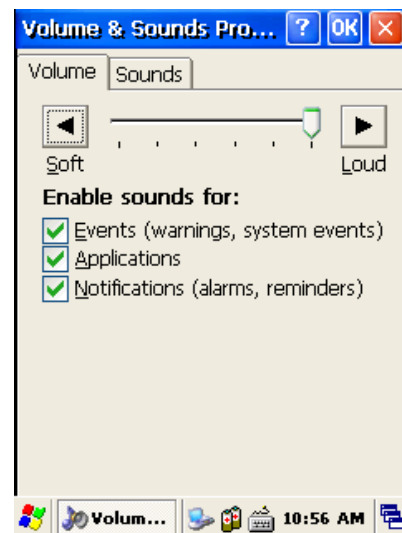


Figure 4. Adjusting volume

### 3.6 Setting up the Date and Time

#### Date & time

You can set the current time located at the bottom of screen.

Tap **Start > Settings > Control Panel > Date & Time**

**Year:** Select the year, then the spin control appears. Try to set the year though the navigation key or up/down button.

**Month:** Select the month directly, then the full months of one year appear. Try to select the correct month. You can also select the month though the left/right key.

**Day:** Just tap a day in the calendar.

**Time:** you can set the time though the up/down button.

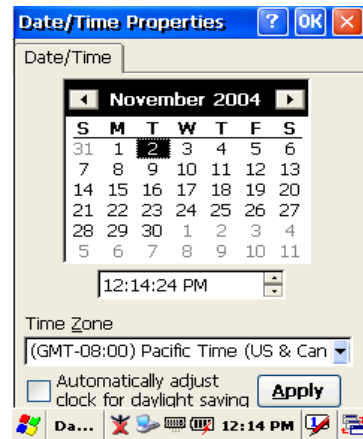


Figure 5. Date/Time

### 3.7 Power Configuration

To adjust power management settings,

Tap **Start > Settings > Control Panel > Power**

Use this control panel to check the charge on the battery or to change the Power settings.

#### Battery Tab

Battery tap: It shows the power remained in the main battery and the backup battery.

To exit, press OK from the command bar, or press the **<Enter>** key on the keypad.

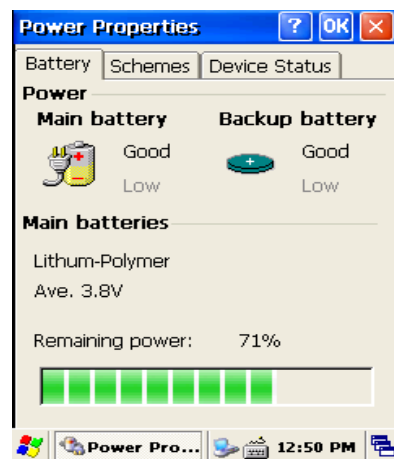


Figure 6. Battery status

### 3.8 Schemes Tab

It allows you to determine the entry time of user's idle mode, system idle mode, and suspend mode while you use either main battery or AC power. This will help you to save more power, if you have to move repeatedly on your work.

To exit, press OK from the command bar, or press the **<Enter>** key on the keypad.

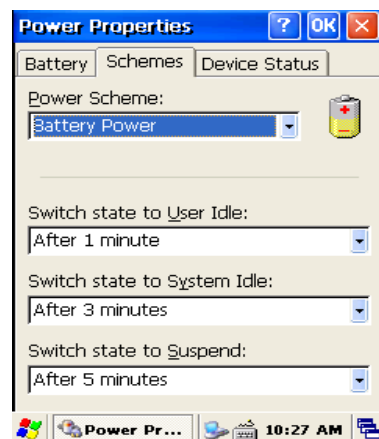


Figure 7 . Schemes Tab



### 3.9 Memory Allocation

Adjust the Memory Allocation with the following steps:

1. Tab Start > Settings > Control Panel > System Properties
2. Select the Memory tab.
3. Move the slider to adjust memory allocation. Default storage Memory is normally set to about 8 MB with the remainder.
4. Press the OK button, or the <Enter>key on the keypad.

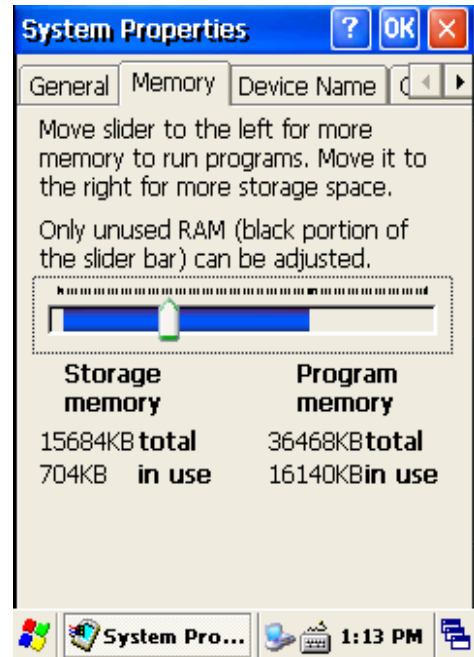


Figure8. Memory Allocation

## 4. Resetting the DOTH-100

When the DOTH-100 completely stops responding for your command, or an application is locked up and does not respond, and when you want to upgrade the firmware, it may be necessary to perform a reset.

### Caution

Always attempt a Soft reset before initiating a Hard reset. Once you initiate a cold reset, all applications are forcibly closed and working RAM and files are cleared. It is a good idea to store important data in the resident (Flash Disk) for this reason.

### Warning

Do not use force or a sharp object like paper clip to press the reset button. Use the stylus for that purpose. Sharp object like paper clip could puncture the seal of the reset key.

### 4.1 Soft Reset

#### When you should perform the soft reset?

When you cannot turn on or off a program, or execute other programs because of “hang” – the system error that stops responding. The “soft reset” for recovering the DOTH-100 is to press R/S button on the front of DOTH-100. This method not guarantee that cached disk data will be saved, so transactional data maybe lost during the reset.

**Procedure to Soft Reset.** To initialize soft reset, press and hold the <Reset> key.

#### After Soft Reset

- The splash screen will appear shortly.
- The desktop appears with the application shortcuts on the screen.
- The custom settings in the registry are persistent.
  - The RF Network PC Card if present, connects to the network system.

### 4.2 Hard Reset (cold reset)

#### When you should perform the cold reset?

If the performed reset method fails to restore system operation, it may be necessary to perform a hard reset. This is a boot method that formats the object store to clean data and registry information from the DOTH-100 system and restores them to their factory-default state.

This will erase the memory in the DOTH-100, including all applications and data files found in the object store (user store).

A Hard reset is a complete reset of the PDA in which all applications are forcibly closed and working RAM and files are cleared.

**Hard Reset Procedure.** To perform a Hard reset, simultaneously press the <Reset> key with the stylus while pressing the <power> key.

#### After Hard Reset.

When a PDA goes through the Hard reset sequence, it clears the working RAM and initializes the file system.

- The splash screen will appear shortly.

- You will be asked to recalibrate the touch screen. Press the <ESC> key to circumvent recalibration.
- The desktop appears with the application shortcuts on the screen.
- The custom settings in the registry are persistent.
- The RF Network PC Card if present, connects to the network system.
- The application saved in Flash Disk will not be deleted after cold reset (refer to section 5 Flash Disk)

## 5. Flash Disk

In addition to the RAM-based storage standard on Windows CE .NET terminals, the DOTH-100 is also equipped with a **Flash Disk**, and all the application and data in the Flash Disk can be persisted in its own condition after the hard reset. From this point of view, it is a kind of very useful method to keep important application and execute user's own application automatically after the hard reset.

### 5.1 Hard reset

1. At first copy an execute file you want to re-execute.
2. **Double-tap My Device > Flash Disk > Open Start folder >Open Hard Reset folder**
3. Paste the copied file in the **Hard Reset Folder**.

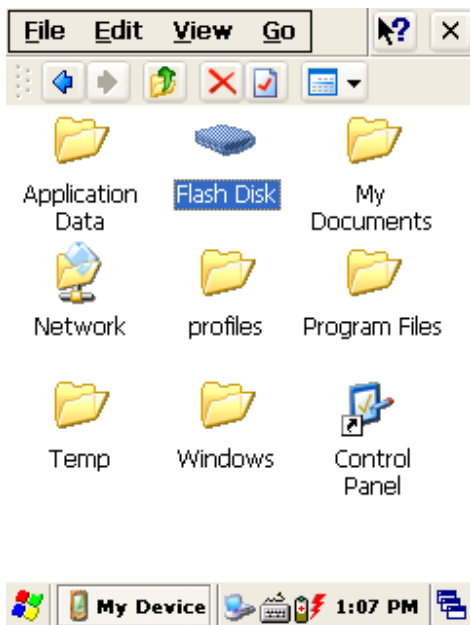


Figure1. Click Flask Disk

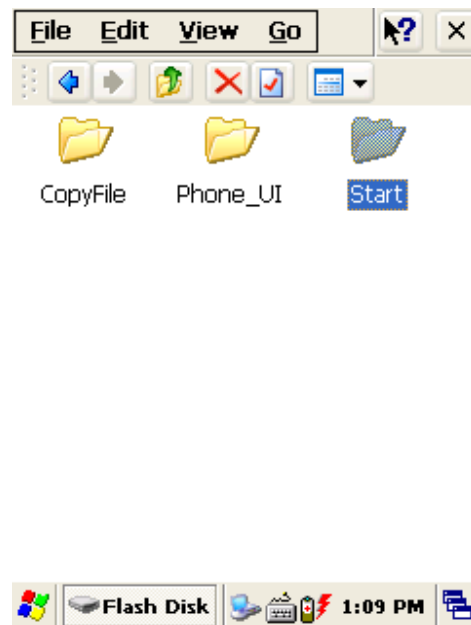


Figure2. Click Start folder

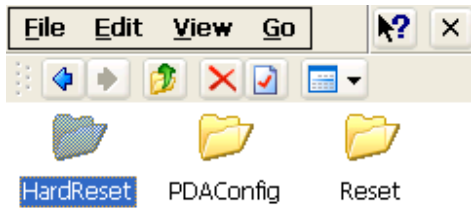


Figure 3. Open the HardReset folder

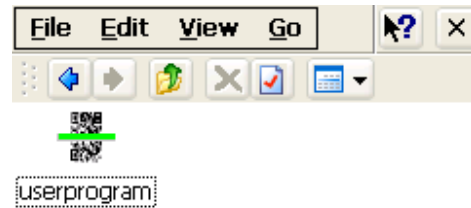


Figure4. An application in the HardReset folder



If you don't want to execute the application copied in the Flash Disk, after the hard reset is performed, press the "Fn" key during the hard reset.

### 5.2 Soft reset

1. At first copy an execute file you want to execute after warm reset.
2. Double-tap My Device > Flash Disk > Open Start folder > Open Reset folder
3. Paste the copied file in the Reset folder.

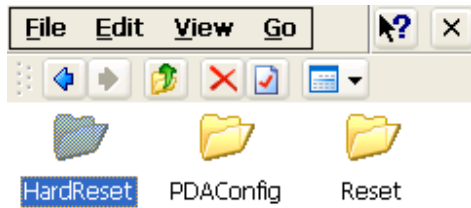


Figure 5. Open Reset Folder

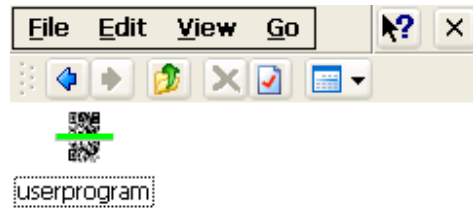


Figure 6. An application in theReset folder



If you don't want to execute the application copied in the Flash Disk, after the Warm reset is performed, press the "Fn" key during the Warm reset.

### 5.3 Return back to the existing place

When a PDA goes through the hard Reset sequence, it clears the working RAM and initializes the file system, but because of Flash Disk you can make your files return back to their existed place after the Hard Reset get performed. This method is also very useful to configure your system without any action after the hard Reset.

To make files get replaced:

Copy files you want to replace after the hard reset.

**Double-tap My Device > Flash Disk > Open CopyFile**

Double-tap My Device > Flash Disk > Open CopyFile

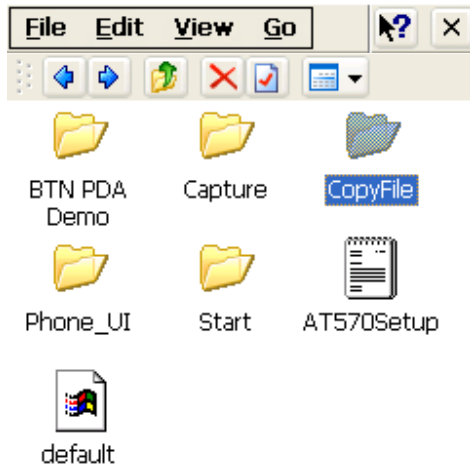


Figure 10. Click CopyFile

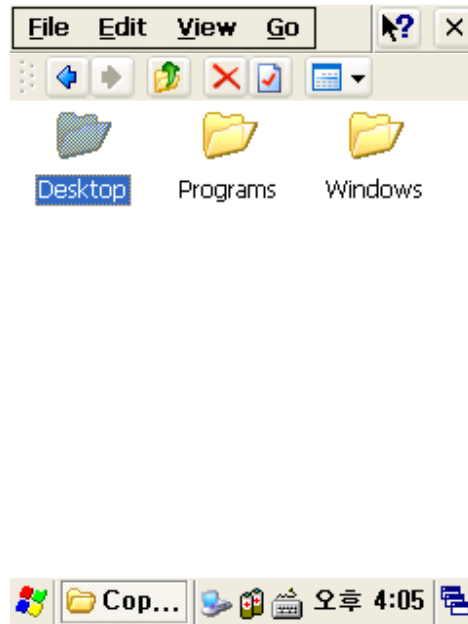


Figure 11. Copy files you want to replace

To make your files return back to the background screen (WWindowsWBackground) after Hard Reset, paste your Files into the Desktop folder.

To make your files return back to programs (WWindowsWPrograms) folder after Hard Reset, paste your Files into the Programs folder.

To make your files return back to Windows (WWindows) after Hard Reset, paste your Files into the Windows folder.

## 6. Registry Backup

Your DOTH-100 is preparing the Registry Backup program for solution to save the user's registry. This is a very useful method to restore your DOTH-100, when you perform the hard reset, and even if it is discharged completely.

### The main function of registry:

1. Makes connection between WLAN and AP.
2. Execute RegistryBackUp program and save registry.

Restores the connection between WLAN and AP after hard or soft reset.

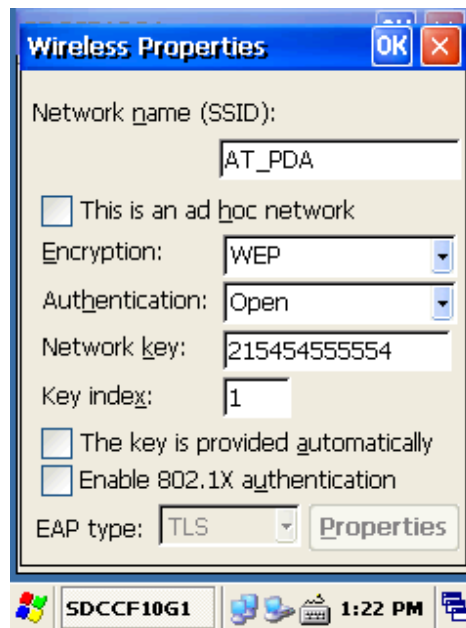


Figure1. Setting WLAN

To save registry:

Tap My device > Windows > Double-tap Registry Backup

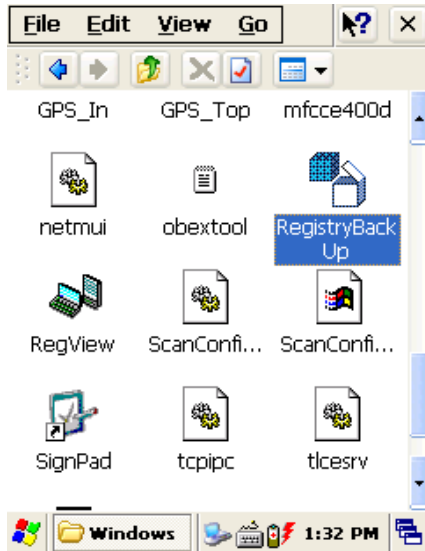


Figure 2. Registry BackUp

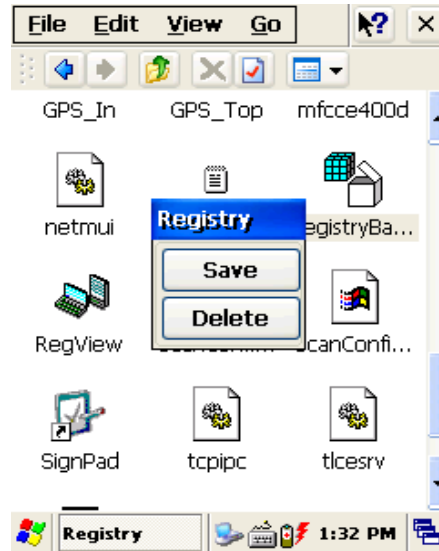


Figure 3. Save or delete registry

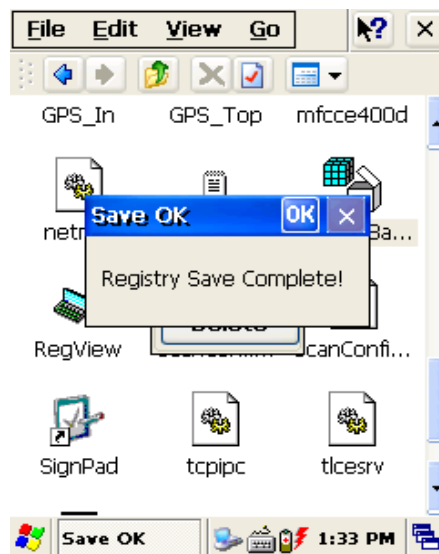


Figure 4. Registry Save



## 7. Using the keypad

The keypad is useful to input data and most of the keys on the keypad have more than one function. Try to input data with the keypad after know how to use it and keep the intimate knowledge like following tips in your mind.

### 7.1 Change current character

To change the current input character type, press the <key> key, than you can see the changed current key type like following steps:

**Numeric > Lowercase > Uppercase**

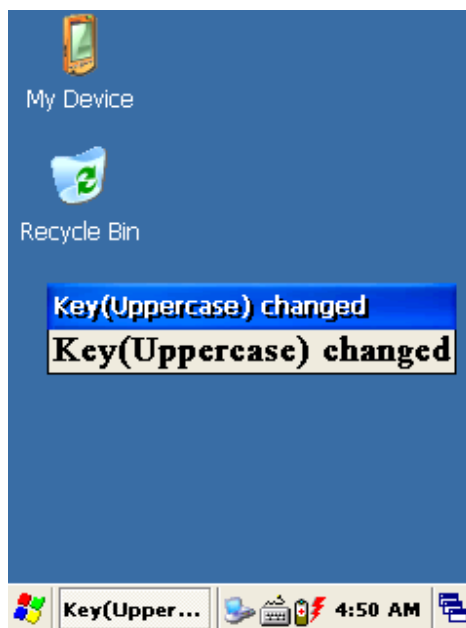


Figure1. Changing Current Character

### 7.2 Inputting the data

**Numeric Mode:** After making your choice to the Numeric Mode through the<key> key, and just press from 1 to 10 numeric keys.

**Alpha Mode:** In alphabetical order, there are 2~3 letters per key.

To input the first letter, press the key you want input one time, and to input the second and third letter, press the key how many times as the letter is ordered on the key continuously.

### 7.3 Setting device through the <Fn> key

Press <Fn> + other keys simultaneously to activate follows.

Fn + Key	Function
Navigation <Up>	Increase sound.
Navigation <Down>	Decrease sound.
KBD	Execute App1 program.
App1	Execute User Program program.(Ref. Control Panel - >Button)

- Tap Start > Control panel > Application Buttons and designate **App1** as you want to execute anytime.

KBD button: you can make the touch screen display the input panel program directly to press the KBD button on the front of the DOTH-100.

## 8. Using the stylus

The stylus is located next to the Battery pack on the right rear of the PDA. The stylus on the PDA is the equivalent of the mouse on a PC.

**Warning:** Never use a pen, pencil, or other sharp object on the DOTH-100' s touch screen display. Use only the supplied stylus or plastic-tipped pens intended for use with a touch screen-sensitive display.

Use the stylus to:

- \*Navigate the touch screen display.
- \*Select characters in the soft input panel (SIP).
- \*Select applications from the desktop or system tray.
- \*Select buttons, tabs, fields and text within applications and dialog boxes.

## Chap 2. Windows Program

This chapter introduces Microsoft Windows CE 5.0 for Pocket PC. While using the DOTEL Mobile Computer, keep these key points in mind:

- 1) **Tap Start** on the **navigation bar**, located at the bottom of the screen, to quickly move to programs, files, and settings.
- 2) **Tap and hold** an item to see a **pop-up menu** containing a list of actions you can perform.

### 1. Basic Information

#### 1.1 Task Bar and Command Bar

The task bar is located at the bottom of the screen. It displays the active program and current time, switch to programs, input panel, and battery status.

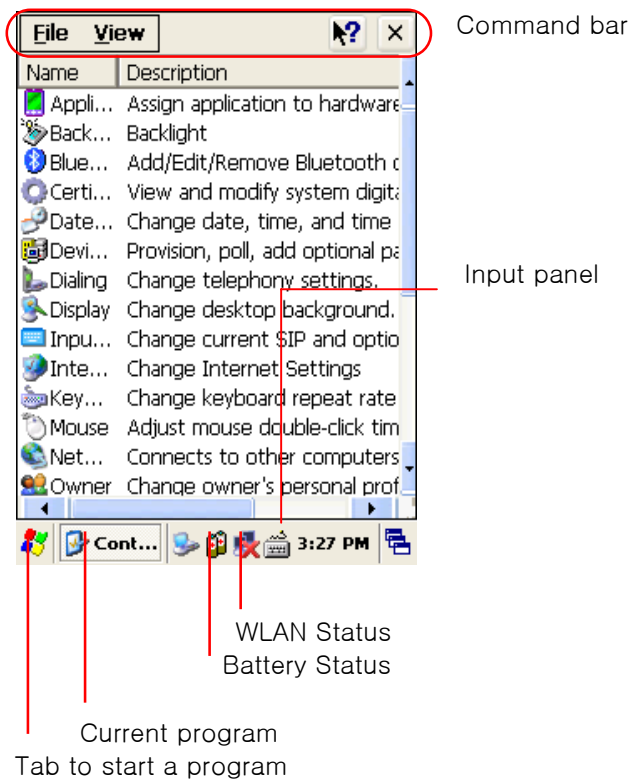


Figure 1. Task Bar and Command Bar

Use the command bar to perform tasks in programs. The command bar includes menu names, functions.

## 1.2 Pop-up Menus

Use pop-up menus to quickly perform an action on an item. For example, you can use a pop-up menu to delete or copy of an item. To access a pop-up menu, tap and hold the item on which you want to perform the action. When the menu appears, tap the action you want to perform, or tap anywhere outside the menu to close the menu without doing the action.

## 2. Executing a Program

When you turn on the DOTH-100 for the first time, you can see the following start screen. Try to double-tap “ My device” Icon > windows > Program > tap an icon you want to execute.

You can also display it by tapping the Start flag at the bottom left of your display.

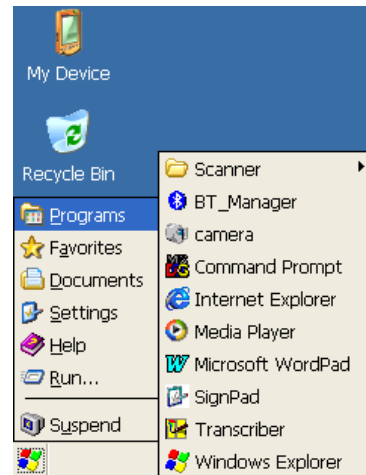


Figure 2. Executing a Program to use Start Flag

## 3. Entering information

You can enter information on your DOTH-100 in several ways, depending on the type you have and the program you are using.

### 3.1 Using the Onscreen keypad

Use the input panel to enter information in any program on your DOTH-100.

You can both type using onscreen keyboard or write using transcriber.

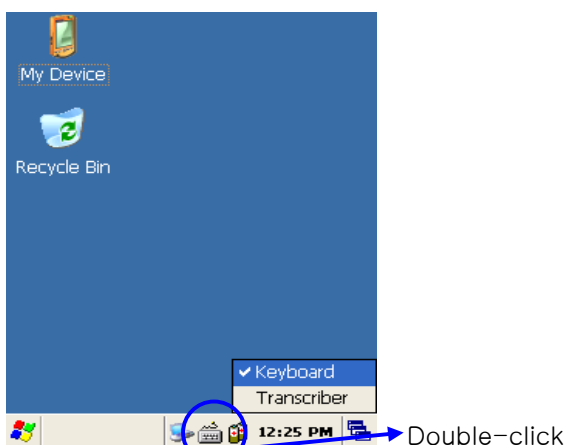


Figure 3-1. Selecting SIP menu

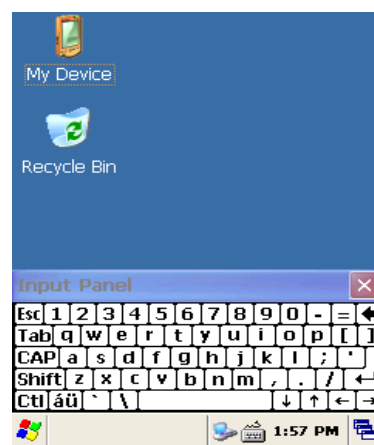


Figure 3-2 Popping-up SIP

To make pop-up menu appears, double-tap the keypad icon on the taskbar.

To make soft input panel (SIP) popped up, tap the keypad icon on the taskbar, or press “ KBD/)) “ key on the keypad.

### 3.2 Using the Transcriber

With Transcriber, you can write anywhere on the screen using the stylus just as you would on paper. Double-tap input panel icon, than tap Transcriber. After selecting, than write anywhere on the screen.

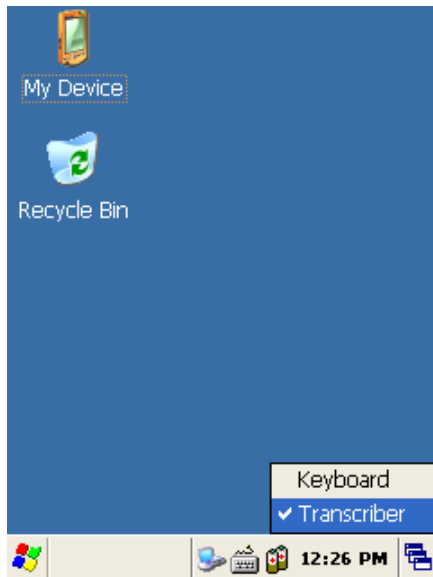


Figure 4. Using keyboard in an application program

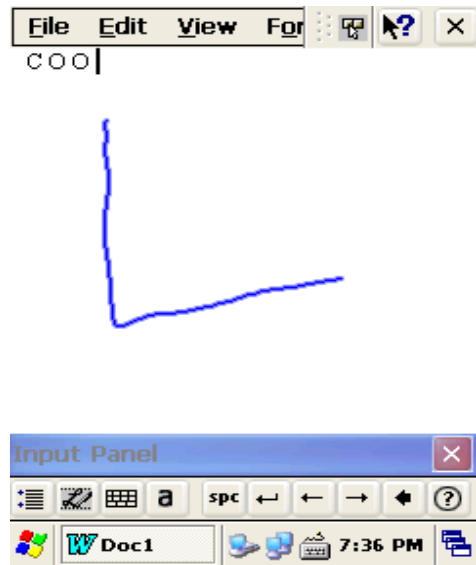


Figure 5. Using Transcriber in an application program

## 4. Customizing Your DOTH-100

You can customize your mobile by adjusting setting and installing additional software.

### 4.1 Adjust settings

To adjust settings to fit the way you work:

Tap [Start] > [Settings] > [Control Panel]

To **open a program**, you can use the “ File” pop-up menu, or double-tap an icon you want execute in the Control Panel.

To **arrange programs** with detail, tap the “ View” and select “ Detail” , and than tap “ Arrange Icons” . If you want to arrange all the icons by description, tap “ By Description” , and if you want to arrange all icons by alphabetic order, tap “ By Name” .



Figure 1. Setting Icons

### 4.2 Adding or Removing the Programs

Programs added to your DOTH-100 Mobile computer at the factory are stored in ROM (Read Only Memory). You cannot remove this software, and you cannot accidentally lose ROM contents. Applications added to your DOTH-100 Mobile computer go into the Object Store, Which is located in Flash ROM. You can install any program created for DOTH-100, as long as there is enough memory.

### 4.3 Adding the Programs Using ActiveSync

1. Use the Explore in ActiveSync on your desktop computer to explore the files on your PDA, and locate the program.
2. Right-click on the program, then select **Create Shortcut**.
3. Move the shortcut to the Programs folder in the Windows folder.  
The shortcut appears on the menu.

#### 4.4 Removing the Programs

To remove a program, tap **Start > Settings > Control Panel > tap Remove Programs Icon**, then select the program you want to remove. Press the “ Remove ” tap.

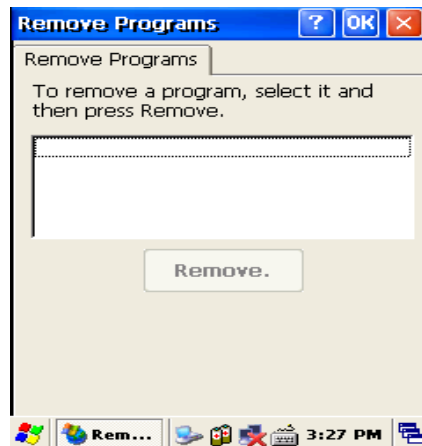


Figure 2. Input a program to remove

## 5. Microsoft ActiveSync

This section provides instructions on setting up the Host PC so that the PC can communicate with the PDA and the dock.

### 5.1 Using Microsoft ActiveSync

You can synchronize the information on your desktop with the information on your DOTH-100. Synchronization compares the data on your DOTH-100 with your desktop and updates both computers with the most recent information

**NOTICE:** You must have Microsoft ActiveSync 4.2 or greater on your desktop before you can synchronize information with your DOTH-100.

With ActiveSync

You can also do:

1. Back up and restore your DOTH-100 data
2. Copy (rather than synchronize) files between your DOTH-100 and desktop.
3. Control when synchronization occurs by selecting a synchronization mode. For example, you can synchronize continually while connected to your desktop or only when you choose the synchronize command.
4. Select which information types are synchronized and control how much data is synchronized.

For more information, please refer to the instruction of Microsoft ActiveSync.

### 5.2 Installing Microsoft ActiveSync on your desktop

Microsoft ActiveSync is a file transfer tool to synchronize the files on a desktop with the files on your PDA. The DOTH-100 comes from the factory with ActiveSync loaded. If you have



ActiveSync already installed on your PC, make sure that you have v4.2 or higher. To install Microsoft ActiveSync, complete the following steps on the PC:

1. Go to the Microsoft Windows CE .NET website and download the most current version of ActiveSync <http://www.microsoft.com/mobile/pocketpc/downloads/>. Install the most current version of Microsoft ActiveSync (v4.2 or greater) on the host PC.
2. Once ActiveSync is installed, it will attempt to connect to the DOTH-100; allow it to fail on the first attempt.

### 5.3 Setting up a Partnership

ActiveSync file synchronization requires an ActiveSync partnership between the DOTH-100 and the Host PC.

#### Setting up a Partnership.

1. Select the files in the synchronization configuration for the DOTH-100.
2. Select Tools > Options from the ActiveSync command bar to configure the synchronization options.

Place the file to be synchronized in the Synchronization folder created in your My Documents directory. During the ActiveSync connection, all files in the Synchronization folder will be synchronized to the My Documents directory on the DOTH-100.

### 5.4 Transferring Files

To transfer files, complete the following steps on the host PC:

1. Select **Start > Programs > Microsoft ActiveSync**
2. Double-click on the ActiveSync icon in the System Tool Tray.
  1. After you have established a connection with your PDA, tap the Explore button at the top of the ActiveSync window (or select Explore from the File menu). Navigate to the target directory on your portable and copy the desired file by using the Copy/Paste method or dragging and dropping the desired file(s) into the folder.

## 6. Microsoft WordPad

Use Microsoft WordPad to create documents, such as letters or meeting minutes.

Select **Start > Programs > Microsoft WordPad**

The PDA comes with WordPad for Windows CE .NET installed from the factory. The following text and document file types are compatible with WordPad:

Text (\*.txt), Word Document (\*.doc), Rich Text File (\*.rtf), WordPad (\*.pwd)

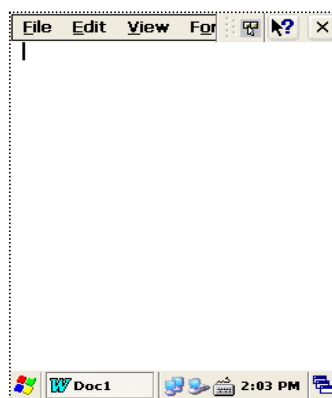


Figure 1. WordPad

## 7. Window Media Player

Use Media Player on your desktop to copy digital audio and video files to your DOTH-100. You can play Window media and MP3 files on your DOTH-100.

To display Media Player:

Tap Star > Programs > Media Player

Figure 1. Media Player



## 8. Internet Explorer

The PDA comes with Internet Explorer for Windows CE.Net installed

1. Open Internet Explorer by selecting Start > Programs > Internet Explorer.
2. To set a default home page, navigate to the desired default web page.
3. Select View > Internet Options from the command bar.
4. Enter the desired URL in the **Start Page** field.

Press the OK button.



Figure 1. Internet Explorer

## 9. Context Sensitive Help

Microsoft Windows CE context sensitive help is available where ever a help button appears in the upper right hand corner of the window. To open context sensitive Help, select/tap in the upper right corner of most screens. Select/tap the desired item from the list of hot links.

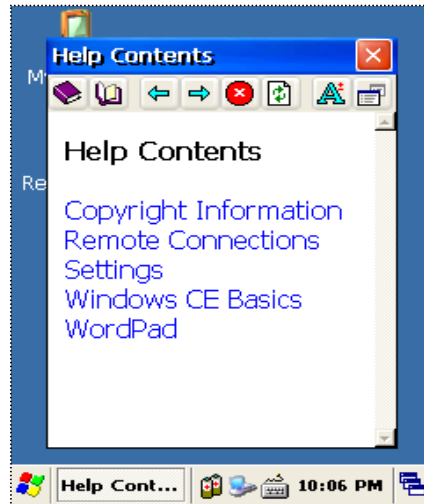


Figure 1. Sensitive Help

## Chap3. Option Module

The automatic identification and wireless network technology has helped users to keep their information, and makes IT engineers try various methods to develop modules used within mobile computer. The DOTH-100 can also be supported with the optional modules for the needs of users. This section provides you with the information of the Optional Modules, and sources for additional product information. You need to confirm the follow information before you get the device that you want to use.

### DOTH-100 Option

- 1) Barcode Reader
  - . 1D Scanner Barcode Reader
- 2) Wireless LAN – 801.11 b.g
- 3) Bluetooth (Stack Service – Only Supports SPP)
- 4) RF 13.56 – Mifare, ISO15693
  - . Integrated in the PDA
- 5) GPS Module
  - The Options to install the GPS Module
- 6) CDMA
- 7) GSM
- 8) Camera
- 9) Printer
- 10) MSR ( Magnetic Stripe Reader)
- 11) IC Card Reader
- 12) Fingerprint

## 1. 1D barcode Scanner – DOTH-100 option facts

This chapter introduces the DOTH-100 built in with the 1D barcode Scanner program to assist you in making the most out of your DOTH-100

### 1.1 1DScanner(Demo program)

You can execute **AT1DScanner** coded from DOTELE to make sure that your DOTH-100 scans barcodes exactly.



Figure 1. Scan Window for 1D image

#### 1) To execute Scanner Diagnostics

Tap [start] -> [program] -> [Scanner] -> [AT1DSMScanner]

#### 2) Reading barcodes

1. Press the L/R scanning button or Fn2, KBD key to scan barcode. You can also tap the “ Start” on the screen to scan a barcode when the laser beam is aimed to a barcode.

2. Make sure that your DOTH-100 scans barcode exactly on the demo program.

\* The scanned data will be displayed on the screen, if your DOTH-100 reads a tag exactly.

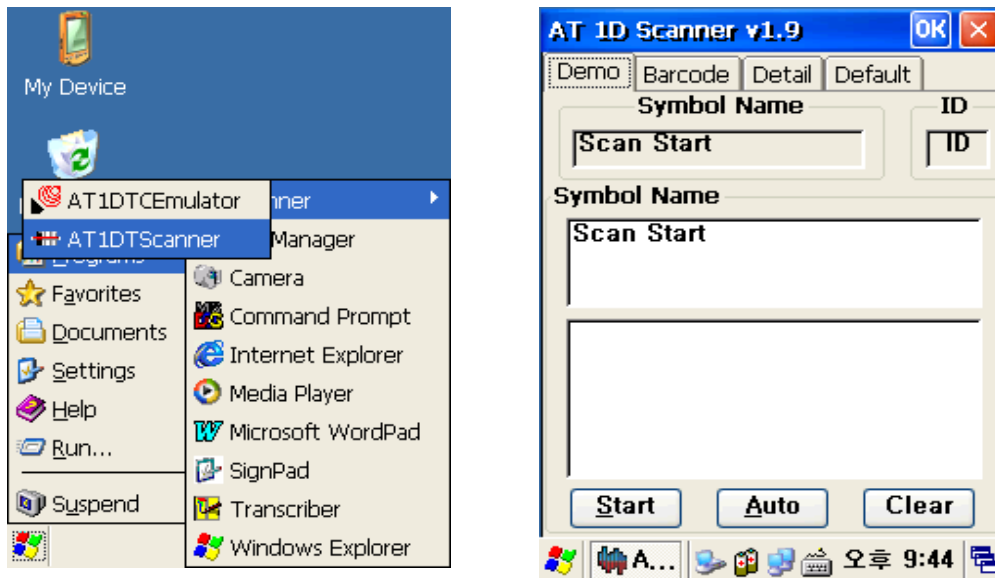


Figure 2. 1D Scanner Program

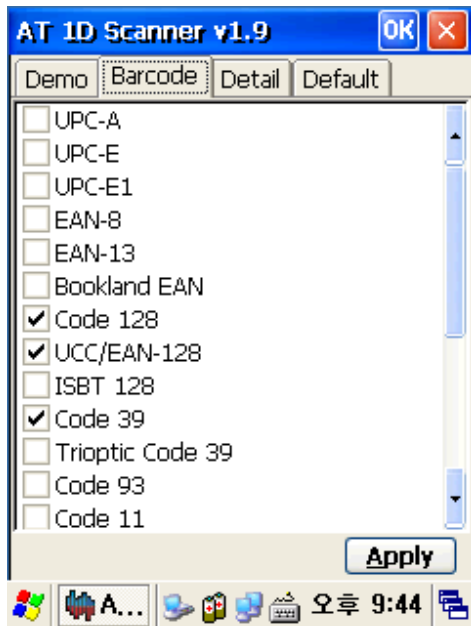


Figure 3. Select barcodes that you are

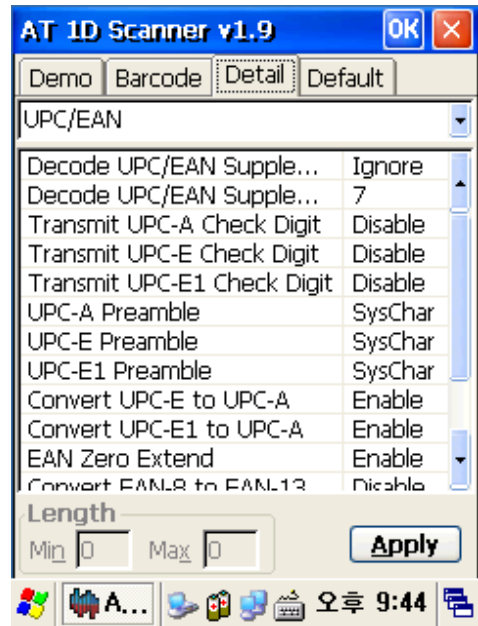


Figure 4. Detailed function

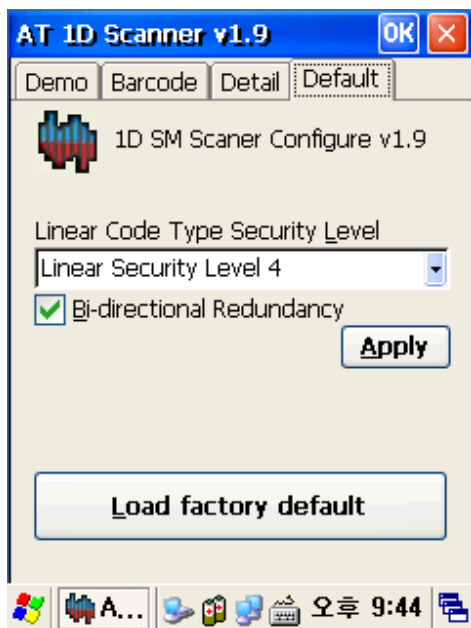


Figure 5. Load factory default

Optional Function:  
Decides to format or not the result value to be added with its type.

## 1.2 Setting up the AT1DEmulator

You can input the barcode value you scanned in any application program that has a cursor after setting the AT1DEmulator. Like an input device, the AT1DEmulator makes data displayed in an application program (see the following figure)

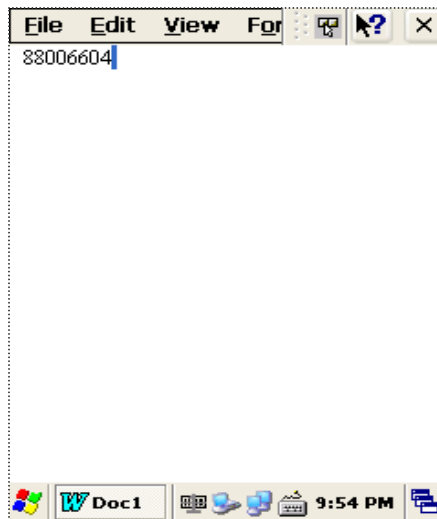


Figure6. Barcode value in the WordPad Program

### 1) Using the AT1DEmulator

Because the AT1DEmulator can apply to all application programs that have a cursor such like Web program, Wordpad and others, you can input the scanned data directly without coding any application program.

### 2) To executing Emulator

Tap [Start] -> [Program] -> [Scanner] -> [AT1DTCEmulator]

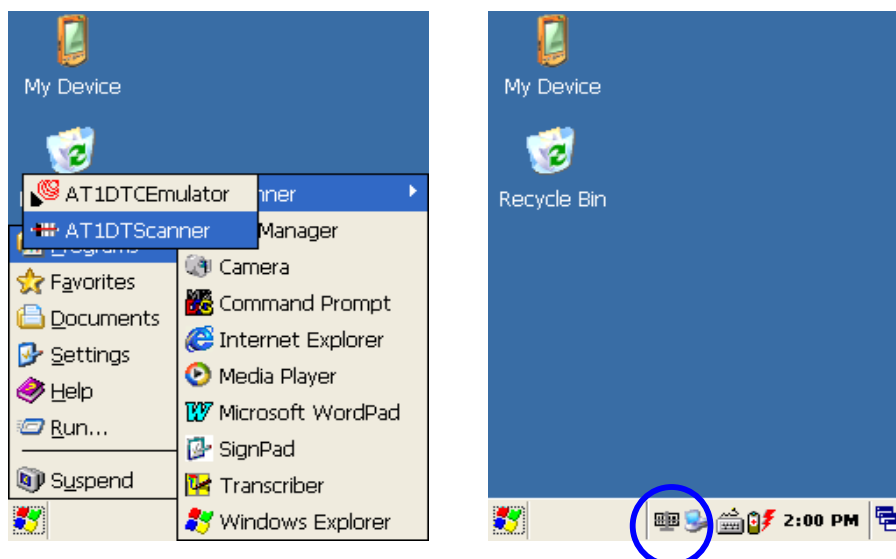


Figure 7. AT1DTCEmulator.exe -> Tap this AT1DTCEmulator Icon

### 3) Setting the Emulator

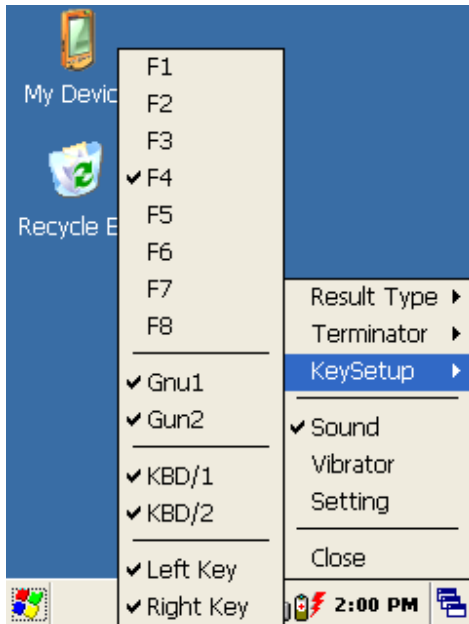


Figure 8. Setting Menu

#### 1. Result Type

There are 2 kinds of method to print the scanned barcode data where a cursor is pointing.

- A. Keyboard Event : Print the scanned barcode data like input Keyboard
- B. Copy & Paste : Print the scanned barcode data with Clipboard

#### 2. Terminator

You can set the termination code at the end of Barcode Value to tap “ Terminator” .

- A. None : No input the termination code.
- B. CRLF(Default Setting) : Carriage Return & Line Feed (Enter code)
- C. Space : Input Space code.
- D. Tab : Input Tab key code.

#### 3. KeySetup

You can make Hardware keys set to aim the lager beam.

- A. F1 ~ F8 Key : press those keys on the keypad to read barcode after setting.
- B. Gun1, Gun2 : Set for the gun-typed DOTH-100 .
- C. KBD/1, KBD/2 key : Same with the F1 ~ F8 Key
- D. Left Key, Right Key key : Same with the F1 ~ F8 Key

#### 4. Sound : set the sound On/Off after Scanning Barcode

#### 5. Vibrator : set the Vibrator On/Off after Scanning Barcode

#### 6. Setting : NO use.

#### 7. Close : Make Emulator Program closed



## 2. Wireless LAN - DOTH-100 option facts

The DOTH-100 is versatile mobile computer that you can add to your wireless LAN. It has an internal 802.11 b/g radio to transfer data using wireless communications. This section of the manual assumes that you have already set up your wireless communications network including access points.

Your DOTH-100 supports TCP/IP network protocols. In a TCP/IP network, the DOTH-100 communicates with a host computer directly using TCP/IP. The access point acts a bridge to allow communications in wireless networks.

### 2.1 Power on Wireless LAN

The default of Wireless LAN was set with “WLAN off” when your DOTH-100 was manufactured at the factory.

To make wireless LAN on:

1. Select Start > Programs > ATWlan



Figure 1. Wireless icon



Figure 2. Select AP

After selecting “WLAN On” the LAN icon appears on the control bar.

Connecting your DOTH-100 to a network device:

- Double tap LAN icon > tap Wireless Information.

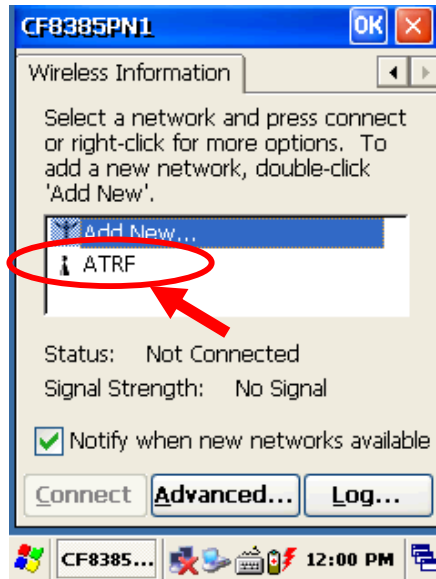


Figure 3. Select AP

Select a network that your DOTH-100 has scanned in the list box, and tap Connect after selecting the network, then the network will be connected to your DOTH-100.

## 2.2 IP Information

To see IP Information:

Double-tap the LAN icon, and tap IP Information tap.

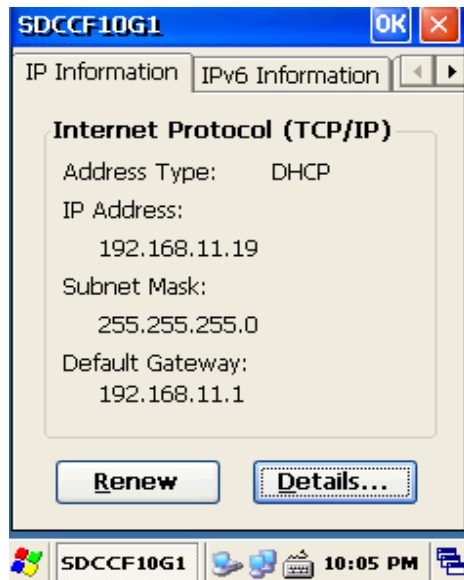


Figure 4. IP Information

### 2.3 Setting manually

You can also connect your DOTH-100 to a network with manual method in the Wireless Properties.

To set wireless LAN in Wireless Properties:

Double tap WLAN icon > tap WLAN Tap > Input data > Tap “ OK”

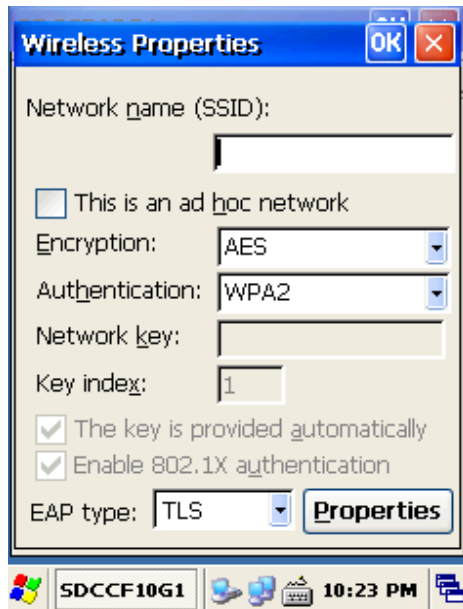


Figure 5. Wireless Properties

### 2.4 Power Off Wireless Off

To make wireless LAN Off:

Press FN key and Esc key at the same time, and select WLAN Off



Figure 6. Wireless Off

### 3. Bluetooth – DOTH-100 option facts

Your DOTH-100 can optionally be built in with the Bluetooth Manager program to communicate with wireless printer. In the Bluetooth Stack Service, your DOTH-100 only supports SPP (Serial Port Profile)

To make sure your bluetooth device, keep these following tips in your mind.

#### 3.1 To enable Bluetooth

Bluetooth is not started by default after a clean-boot is performed. It is because of your DOTH-100 retains the bluetooth state when a clean-boots are performed. For example, if Bluetooth was enabled before a clean-boot, Your DOTH-100 boots up with the Bluetooth state enabled and Bluetooth virtual COM ports registered. Reactivate the connections manually as the system does not do them. If Bluetooth was disable before a clean boot was performed, the DOTH-100 boots up with disabled.

To turn on Bluetooth:

Double tap My Device > Windows > Tap Bluetooth icon

#### 3.2 Bluetooth Manager

Bluetooth Manager is a program that makes your DOTH-100 scan SPP device and connect to a device that you want use in its scanning range.

After connecting your DOTH-100 to SPP device through Bluetooth Manager, the DOTH-100 supports Virtual Com Port (COM3) and sets up the Baud-rate as 9600 bps.

#### 3.3 Connecting Bluetooth Printer(SPP)

BT-Manager is coded only for Hardware support to connect DOTH-100 to a Bluetooth Printer.

To start BT\_Manager:

Tap Start > Program > Tap BT\_Manager

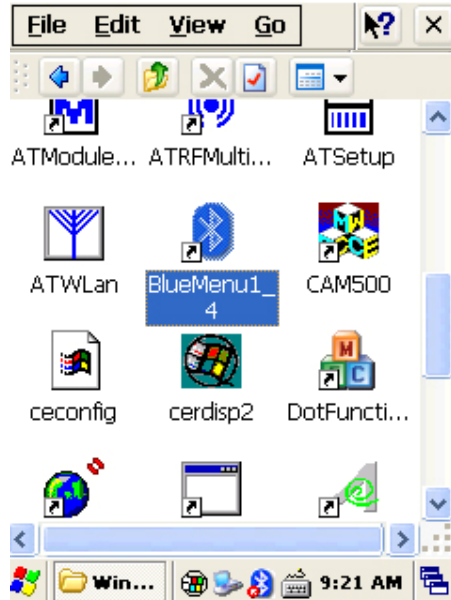
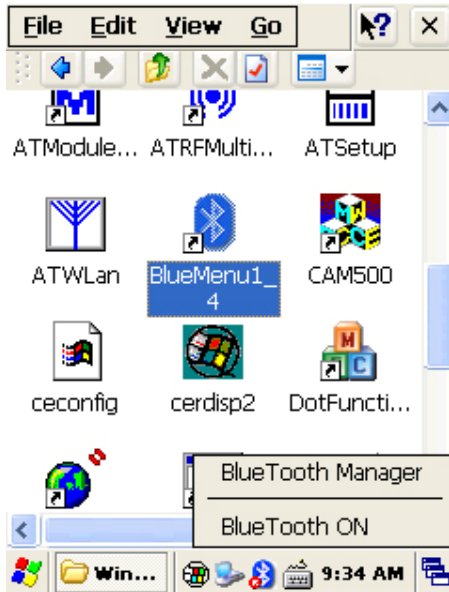
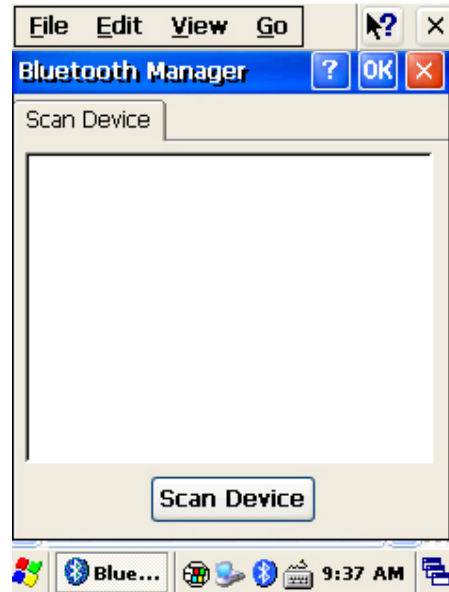


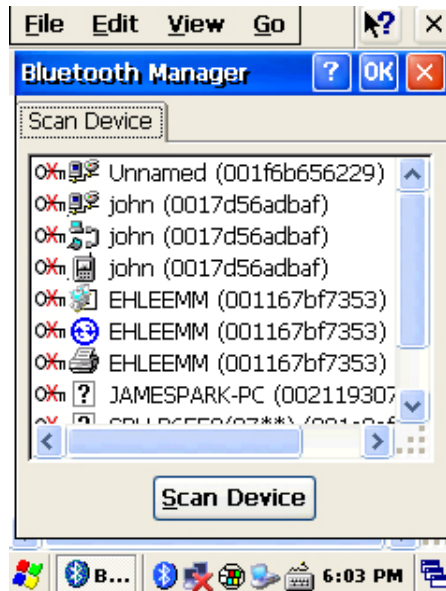
Figure 1. Executing BT\_Manager



2. select "Bluetooth ON",when Click on the icon of the task bar menu.



3. If the red mark of the icon disappears, push the icon and choose "Bluetooth Manager".(you can choose a bluetooth item in Control Panel)



4. Click the Scan Device button to retrieve the device, you can connect to Bluetooth devices.

## 4. 13.56MHz Reader - DOTH-100 option facts

### 4.1 Leader type

[The internal organs style]

RF13.56, is a type where modules are established with the internal organs.

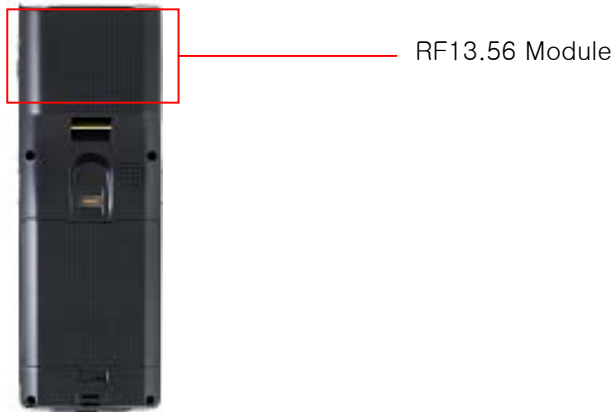


Figure 1. RF13.56 Module The internal organs style

#### 4.2 Running MultiReader

[Start] -> [Program] -> [ATRFMultiReader] Execute the program.

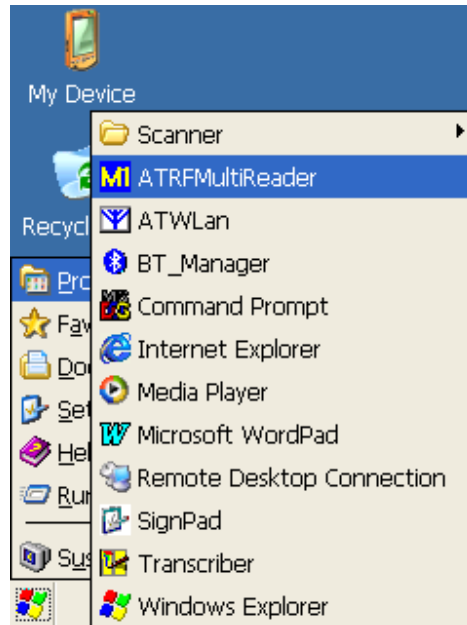
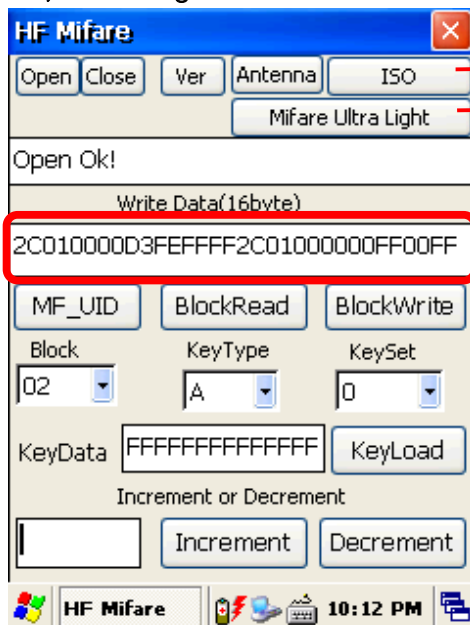


Figure 2. RFID Program execution

#### 1) Mifare Tag



ISO: ISO-15693 The open does the

Ultra MF: Ultra Light Mifare The open does the tag window.

Version: Reads firmware information and comes.

Antenna : When the access doing in Mifare, the authentication height which uses in the leader/the lighter registration

MF\_UID: Mifare Tag ID Read

Block Read: Block Data Read.

Block Write: Block Data Write

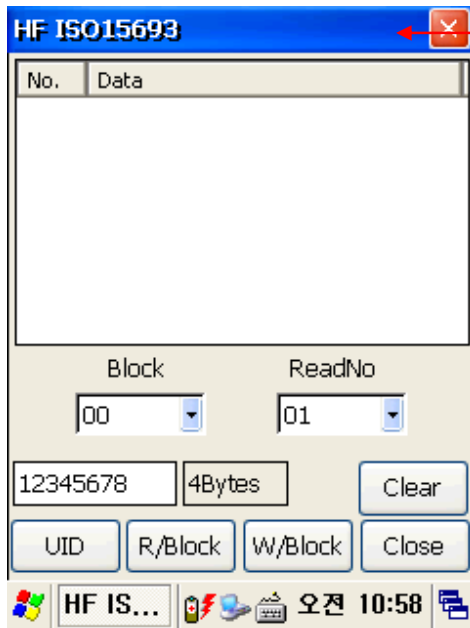
Keyload:

Increment: Price in block data.

Decrement: Reduce productions a price in block data.

Figure 3. Mifare

2) ISO 15693 Tag

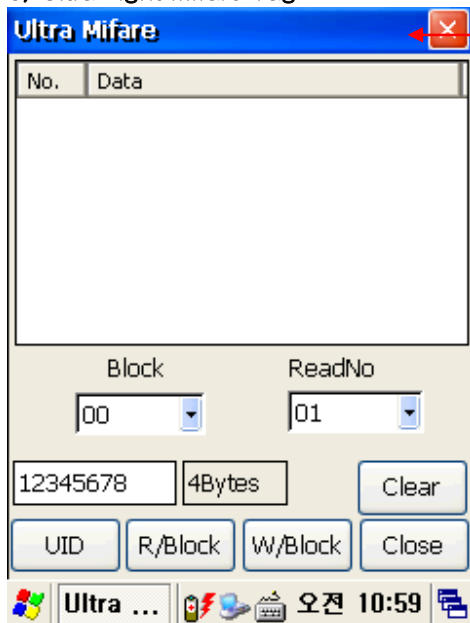


ISO-15693 Tag Window

UID: 15693 Tag ID Read.  
R/Block: 15693 Block Data Read.  
W/Block: 15693 Block Data Write.  
Clear: Erases a display screen coat data.

Figure 4. ISO 15693

3) Ultra Light Mifare Tag



“ Ultra Light Mifare” Tag

UID: Ultra Light Mifare Tag ID Reading.  
R/Block: Ultra Light Mifare Block Data Read.  
W/Block: Ultra Light Mifare Block Data Write.  
Clear: Erases a display screen coat data.

Figure 5. Ultra Light Mifare



## 5. GPS Module - DOTH-100 option facts

Options to install the GPS Module

Figure 1 . (Port : COM6)



-. GPS Module designed to be installed on the top of the DOTH-100

### 5.1 Executing the GPS

To execute GPS:

Tap **start > program > GPS\_xxx.exe**

### 5.2 Configuring the Port and Baud Setting for Executing the GPS

To use the GPS installed on your DOT-H100, you need to make the GPS' s power on. For that, please double-click the " GPS\_Power\_Init " -the EXE file that in the " Flash Disk" . And than tap the GPS EXE icon, the following GPS screen appears.

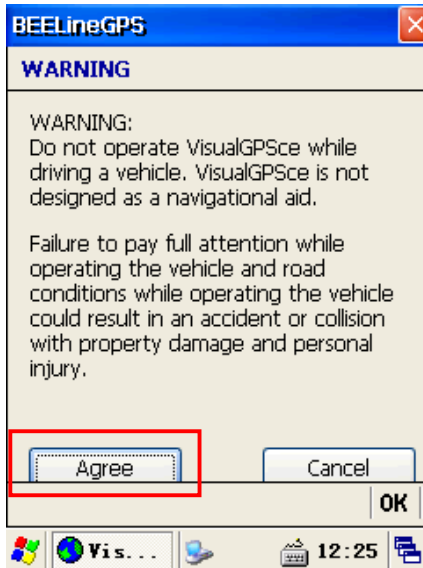


Figure 4. Executed GPS screen

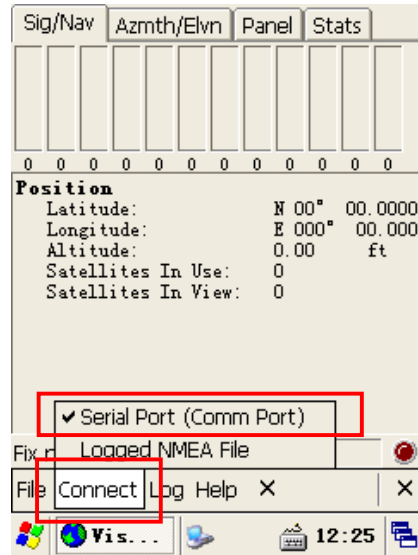


Figure 5. Comm Setting

If you tap the Agree tap in the figure 5, the Com Setting screen appears. For executing the GPS, you need to configure the port and baud at first. Select the " connect" on the command bar, and select Serial Port(Com Port) in the pop-up menu. And select these settings.

GPS port: COM6(GPS\_Top.exe)

Baud: 9600 bps

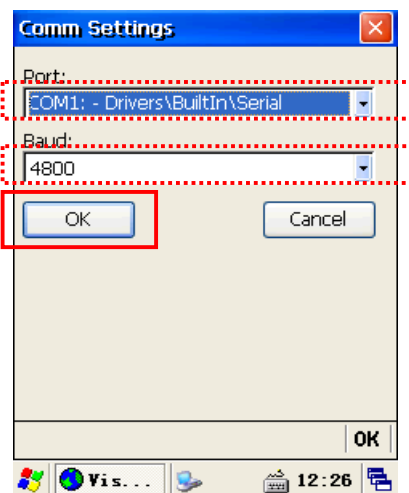


Figure 6. Com Setting screen

Tap “ OK ” after configuring Port and Baud.

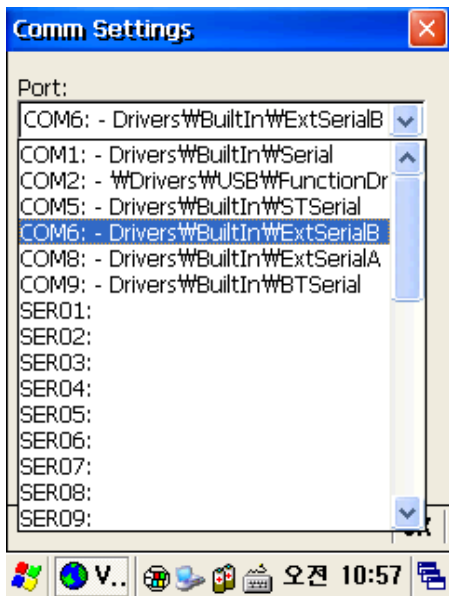


Figure 7. Com Port Setting

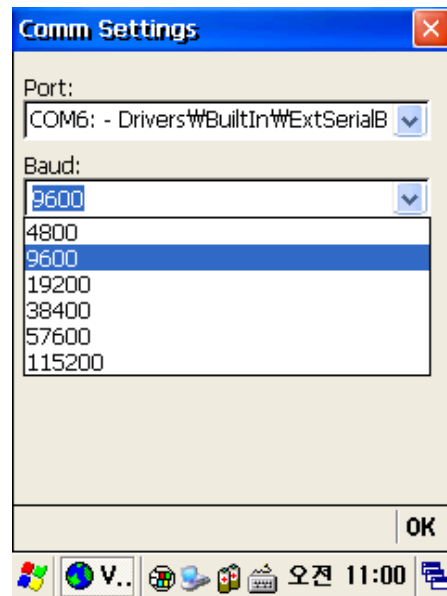
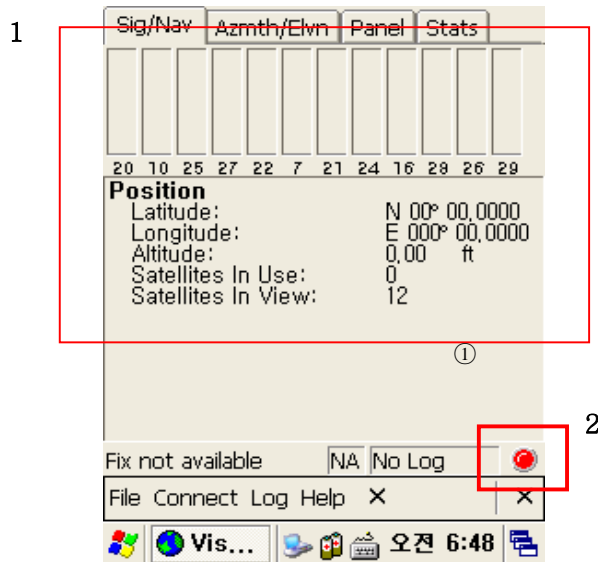


Figure 8. Baud Rate Setting

### 5.3 Checking the GPS status

After tapping “ OK ” if the program is operated normally, you can see the red lamp. The data received appears in the part of the ② (but according to the reception status it takes more or less time to access data.)



Confirmation of receiving GPS data

1. Find an open place to check your GPS.
2. According to the actual environment, the time to receive data is different (about 3~10min)
3. After receiving GPS data once, it is more fast to receive GPS data than the first attempt .

## 6. GSM Module – DOTH-100 option facts

### 6.1 Using the GSM

Select My device> Windows > Phone UI

### 6.2 Telephone image



#### (1) Explaining the Icon

Feature icon	Content
	Phone reception icon
	notification icon
	The new message notification icon
	Data communication status icon
	Battery indicator icon

#### (2) Make a phone call

- 1) Push it that you want to call number or speed dial.
- 2) You can retouch telephone number to [CLR] button
- 3) Make a phone call to [SEND] button.
  - when push [SEND] button without inputting number, the screen displays the call list.
- 4) Once connected, the phone will start
  - You can hear a dial tone when connected to the phone.
  - The time is displayed on the screen that you are speaking.
- 5) [END] to end the call, press the button.

#### (4) Calling

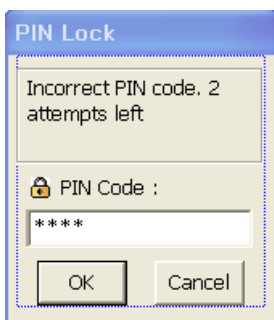
- 1) The phone has been ringing, your phone display a message.
- 2) In a state of this, call begins if you push the [SEND] button.
- 3) Automatically disconnect a call if the person is cut off or push [END] button.

(5) Others

- 1) When you press [\*] Button long, it inputs “ +” .
- 2) When you press [0] Button long, it inputs blank.

### 6.3 Function of GSM

#### Type in your own password



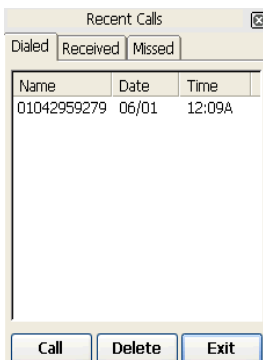
PIN1 : Password 4–digit


PUK1 : Password 8–digit

If the wrong password three times in the PIN1,password of PUK1 appears.

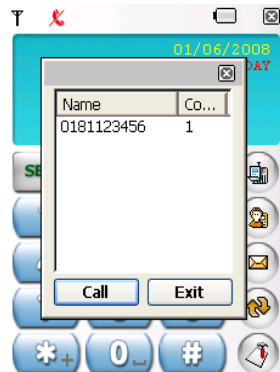
If ten times of PUK1 is different: SIM card is lock

#### Recent Calls



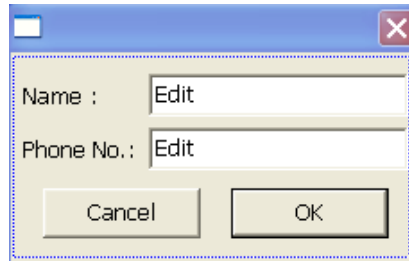
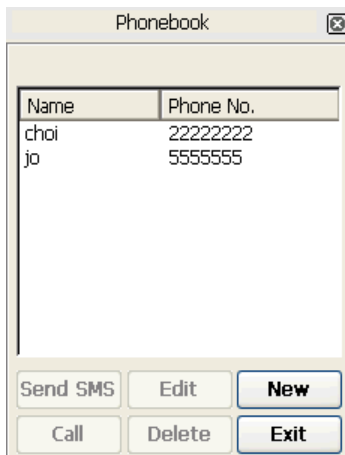
Just press long the  button to get recent call list  
 Tab consists of Dialled, Received, Missed  
 you can see list of each tab if you move to each tab.


#### Dialled List



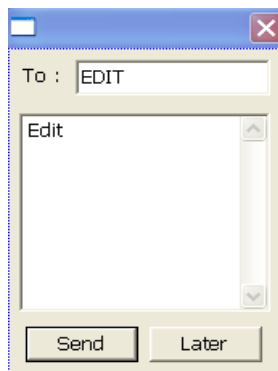
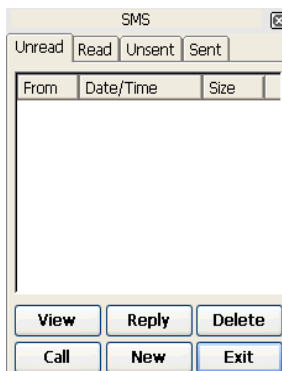
Push **SEND** – dialled list ,window pop up  
 Name, Count (You can select a list of phone)  
 It is deleted in Dialled list if you delete a list in Recent Call


## Phone Book



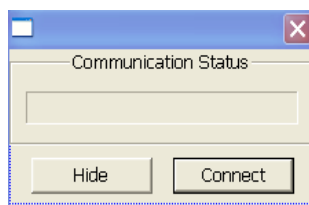
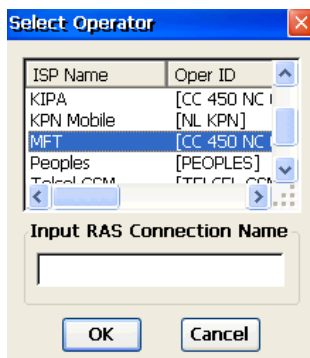
Push  Button – Phonebook, Name, Phone number  
 Save up to maximum capacity of the SIM Card  
 It consist of Send SMS, Edit, New, Call, Delete


## SMS



Push  Button – SMS  
 It consist of Unread, Read, Unsent, Sent

## GPRS

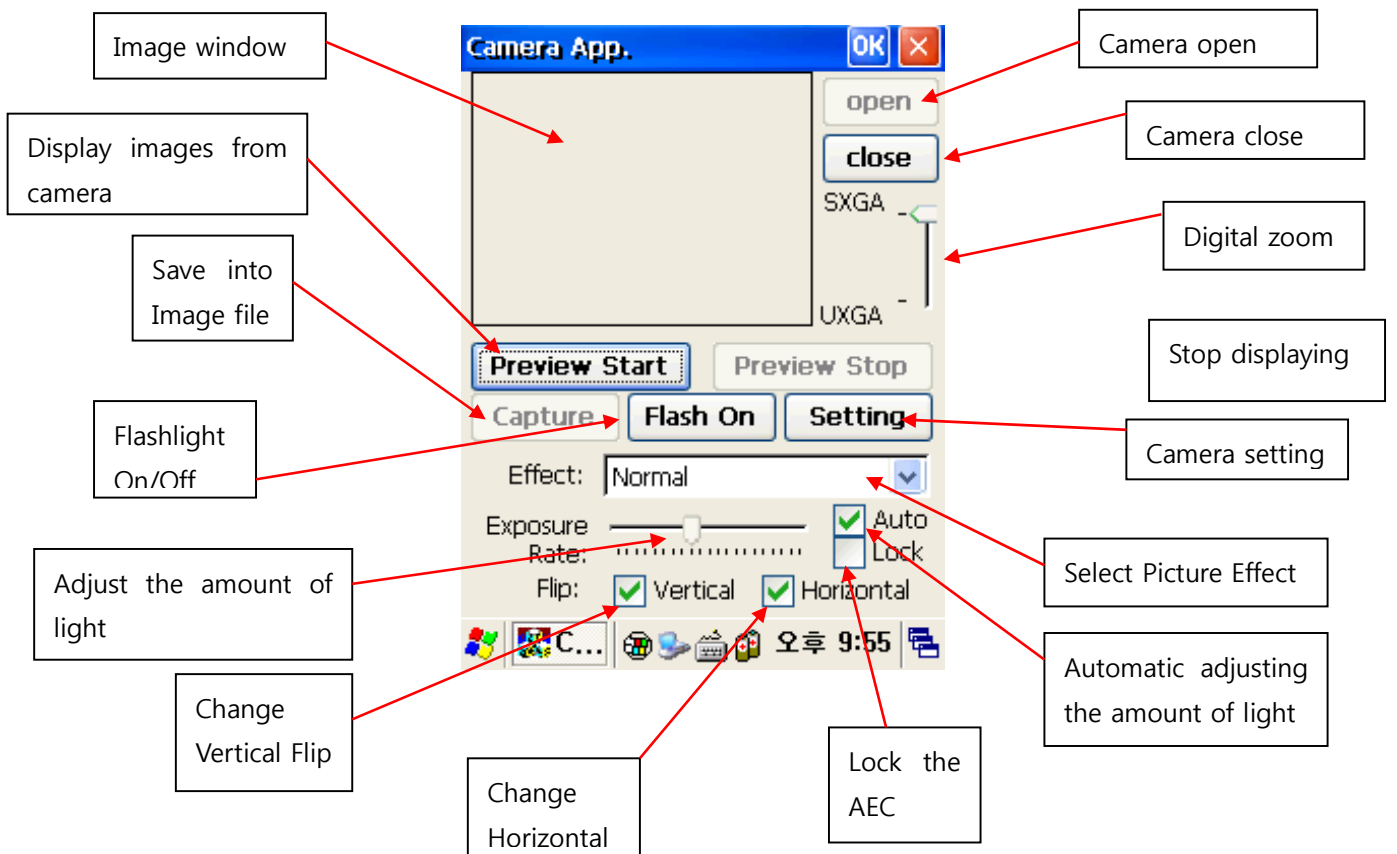


You can connect DATA if you push   
 Button (Select the items in the business)  
 Network information in advance of the  
 national carrier should have to have Data

## 7. Camera – DOTH-100 option facts

### 1) To use your Camera

Tap start > Program > CAM500





2) When you push [Setting], window will appear like this.

3) "Capture Size" list to the Image File will be saved in the selected size

4) Capture image File will be saved in "FilePath"

5) push the [OK] button to set. If you want to exit without changing, push the [Cancel] button.

6) When you push [Preview Start] in Main window, The image is printed by incoming Camera Sensor in image window

7) [Capture] button to save the image as BMP

8) [Flash On] button, the Flash will be turned on, [Flash Off] button, Flash will be turned off.

9) If you check [Flip: Horizontal], the image will reverse to Horizontal axis.

10) If you check [Flip: Vertical], the image will reverse to Vertical axis.

11) [Auto] button when you check in, it' automatically adjust the amount of light coming into Camera

12) [Lock] button when you check in, it's fixed amount of light before checking value of the Camera.

13) [Auto]button when you don' t check in, Camera control the amount of light coming into the "Exposure Rate" Slide set the value.

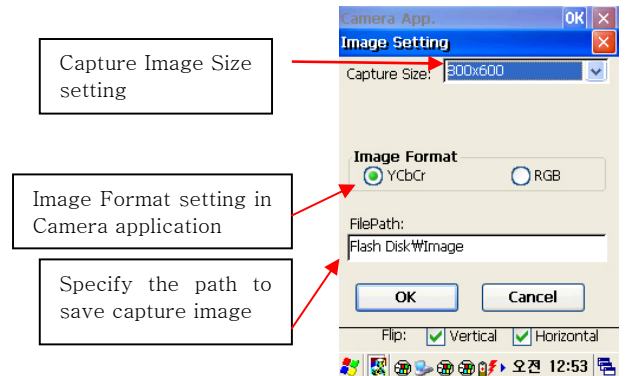
14) The image is shown in Picture Effect "Effect" list to select from.

15) Image Zoom-In, Zoom-Out can adjust through "Digital Zoom" Slider but, Provides the size of the image depends on the value of the Digital Zoom to Capture

16) [Preview Stop]button when you push, stop the display to "Image Window" on the incoming image with Camera.

17) [Open] button when you push, Camera Port is open.

18) [Close] button when you push, Camera Port is close.



## 8. Printer – DOTH – 100 option facts

This printer, 58mm (2 inches) in width, Printer paper (Thermal Paper) is used.

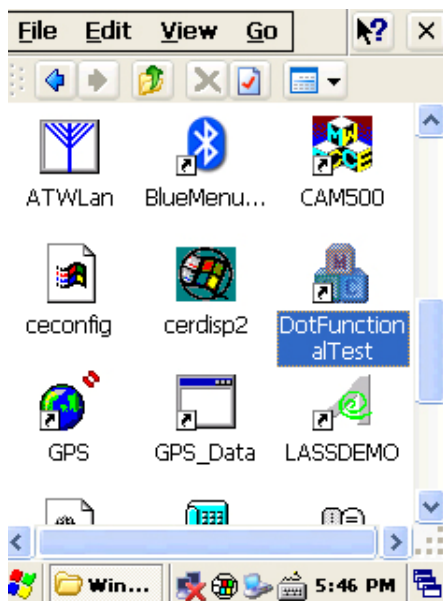
### 8.1 Check the print paper

Printer paper through paper check window on the right side of the device can see.

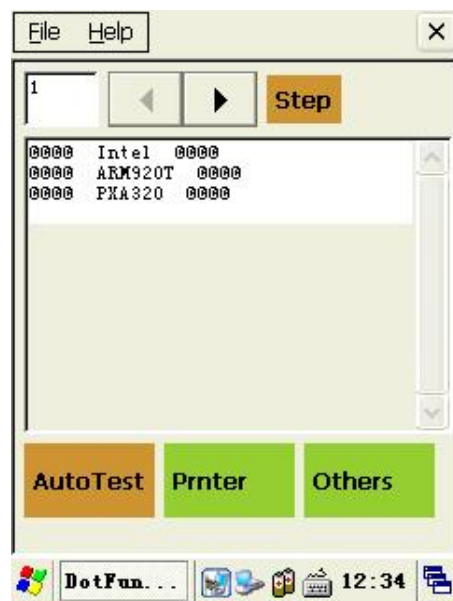
### 8.2 Change the print paper

1. Push the latch up, the upper part will be opened automatically.
2. Open the upper part completely.
3. Put the paper like picture.(Check paper direction.)
4. Close the upper part like picture.
5. When you cut paper, pull the paper from left to right.

### 8.3 printer output steps

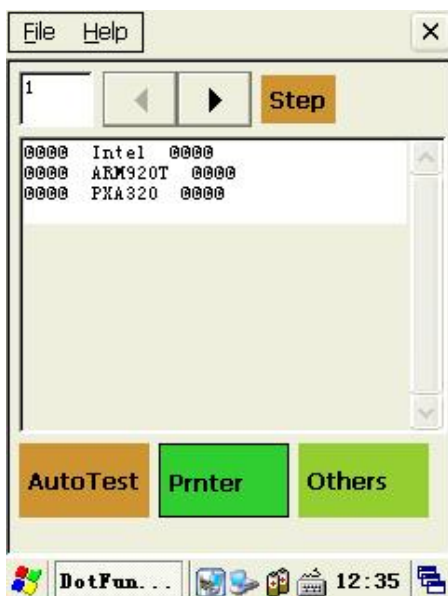


(1) Click DotFunctionTest in windows.

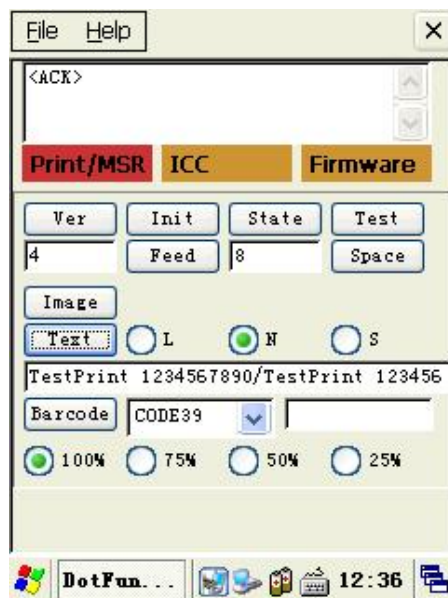


(2) You can confirm picture like this.

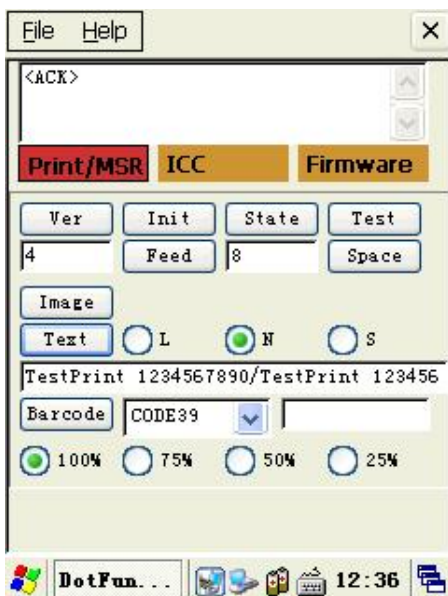
## 8. Printer – DOTH – 100 option facts



(3) Click Printer

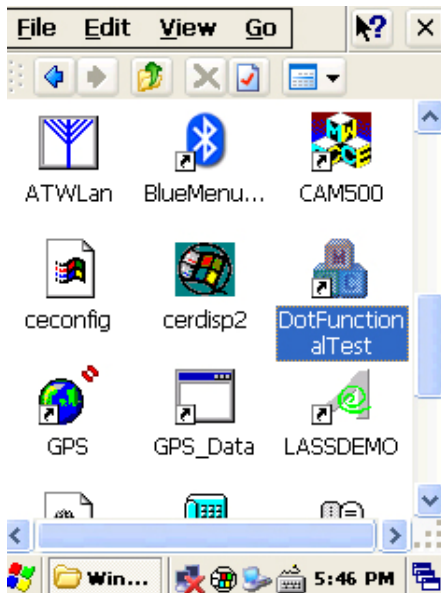


(4) If you click on Text, Short Print Run

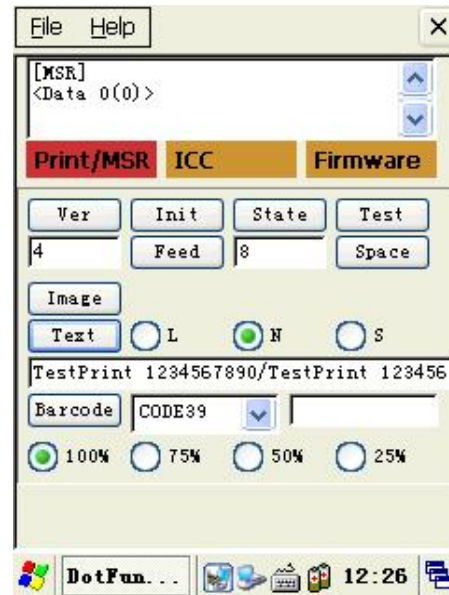


(5) When you click the Test button, it will be output to form of the test.

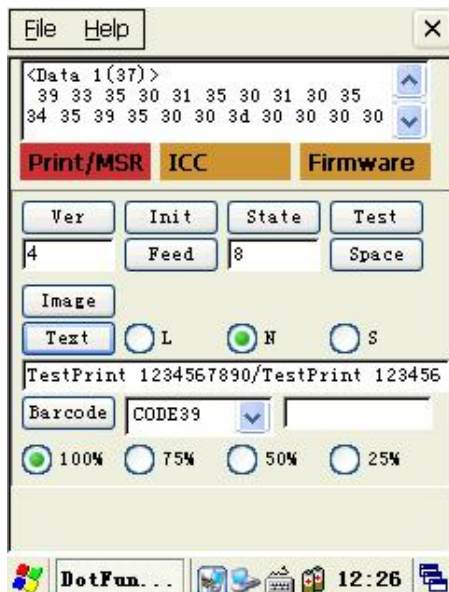
## 9. MSR – DOTH – 100 option facts



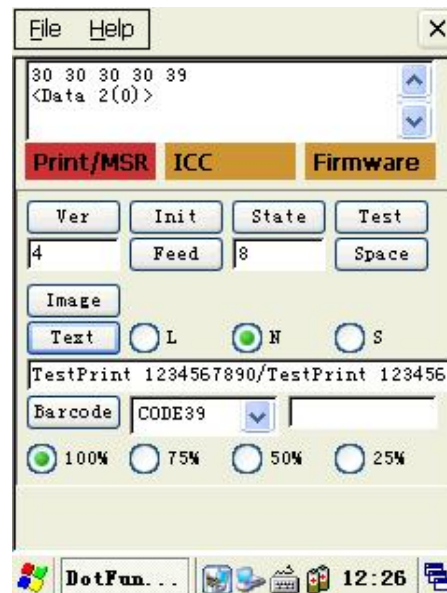
(1) Click DotFunctionTest in windows.



(2) You can confirm picture like this.

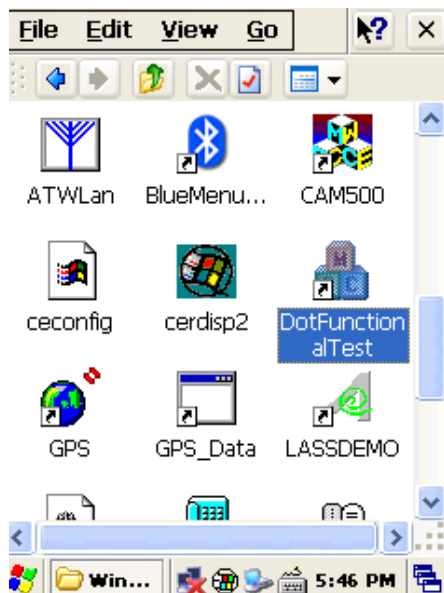


(3) Click Printer.

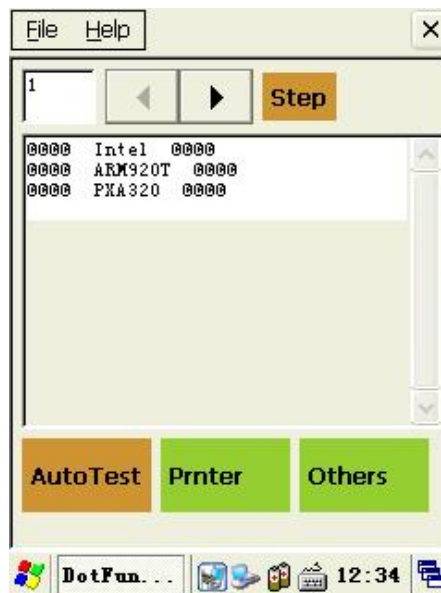


(4) If you click on Text, it runs Short Print.

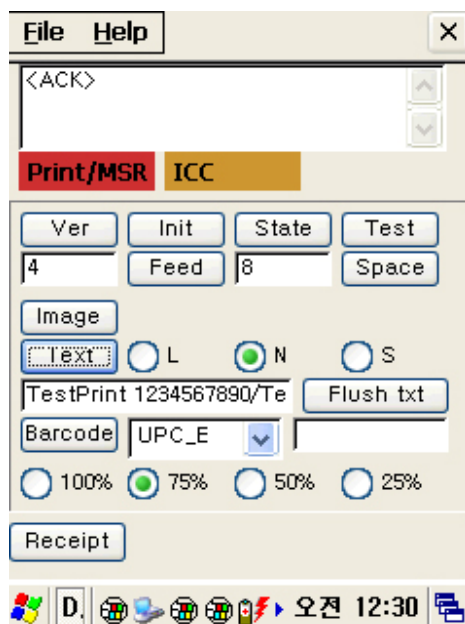
## 10. ICC Reader – DOTH – 100 option facts



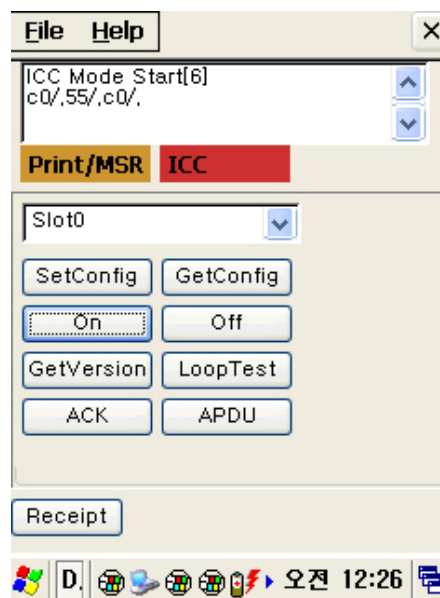
(1) Run Dotfunctionaltest



(2) Click printer.



(3) Click ICC

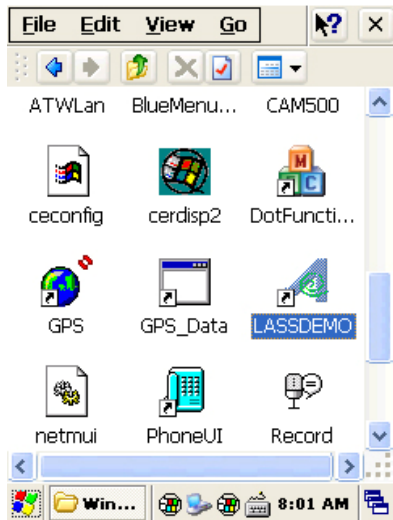


(4) Put the IC card and Click On. .

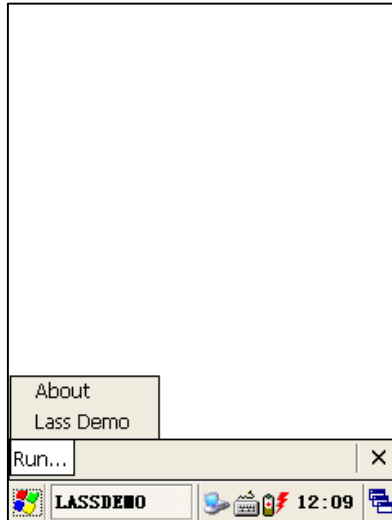
## 11. Fingerprint – DOTH – 100 option facts

Users by using the fingerprint feature can more safely use the DOTH-100.

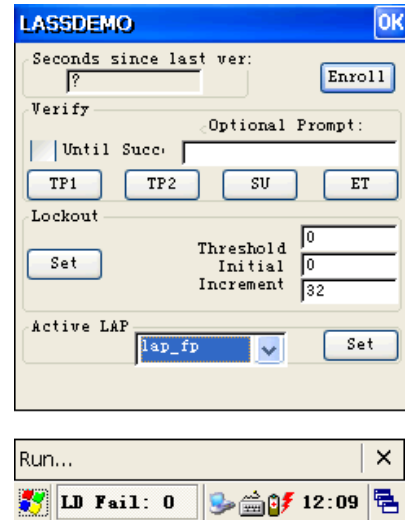
### 11.1 Registering fingerprint



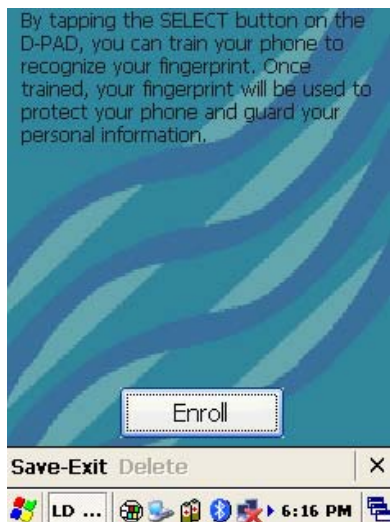
(1) Click Lass Demo in windows of My Device.



(2) After you click Run, click the runs Lass Demo.



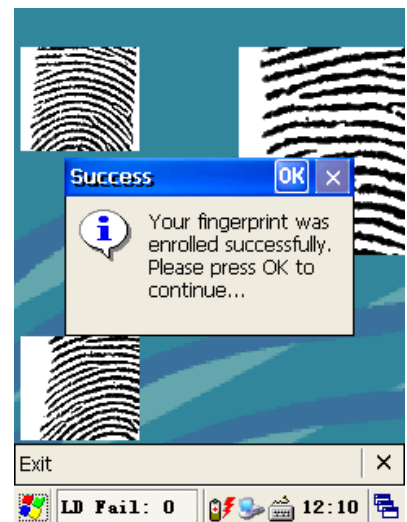
(3) Click Enroll



(4) Click Enroll

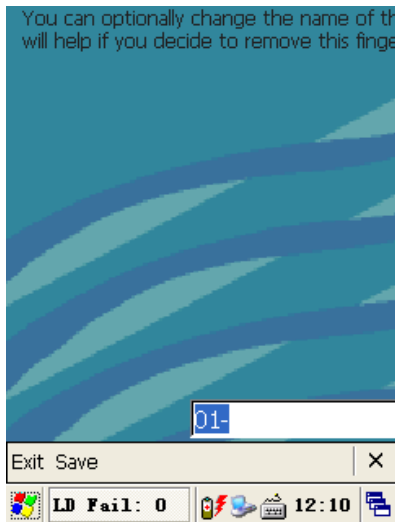


(5) Scrape down a few times on finger from the top.

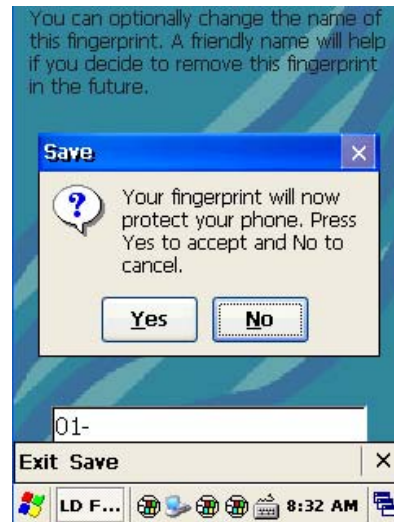


(6) Successful as shown at the registration screen appears.

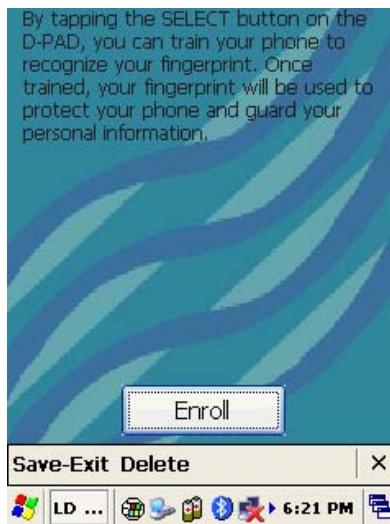
## 11. Fingerprint – DOTH – 100 option facts



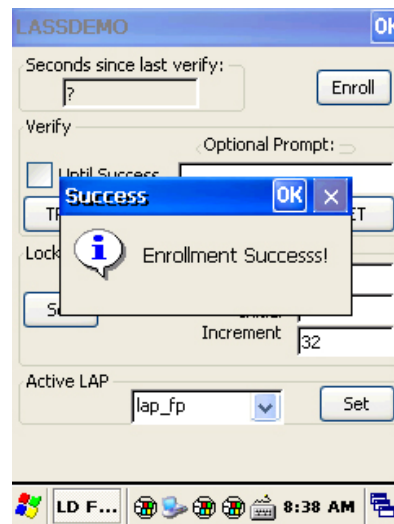
(7) Write registration name and click Save.



(8) Save on the final confirmation screen, click Yes



(9) When you click Save-Exit, Registration setting is completed.



(10) Registration success screen.

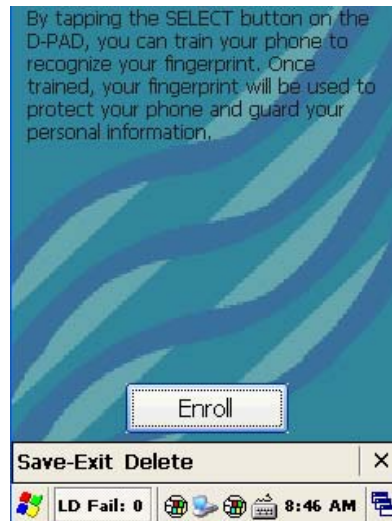
If Registration is set, you should release lock to use this. Trying to boot from sleep mode requires fingerprints.

## 11. Fingerprint – DOTH – 100 option facts

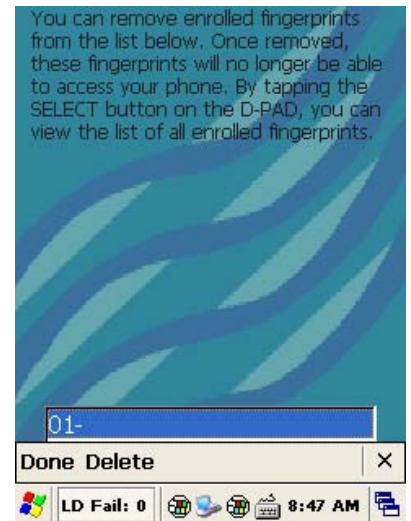
### 11.2 Releasing Fingerprint



(1) For the deletion of registration, run LassDemo.



(2) If Fingerprint recognition succeed, click Delete.



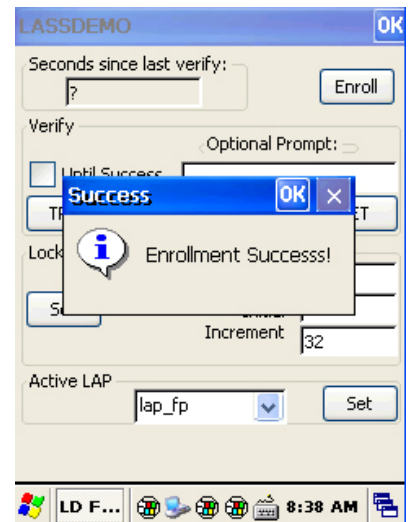
(3) Click Delete.



(4) Click Yes on the delete confirmation screen.



(5) When you click Save-Exit, the registration is completed.

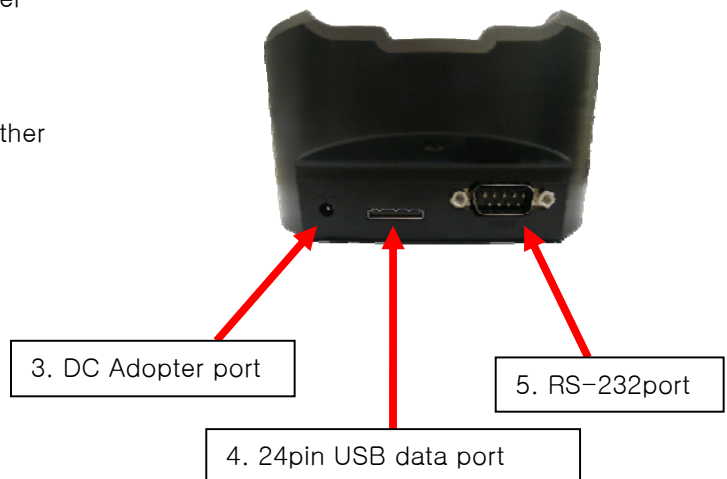


(6) Registration success screen



## 12. Cradle – DOTH – 100 Accessory option facts

- ① battery charging port
  - battery can be charged by inserting here.
- ② USB Client
  - If you plug in a portable USB, drive is generated. (My device)  
Generated device is interlocked with AT970.  
You can use and interchange with data on both sides.
- ③ DC Adopter porter
  - To supply power plug in adopter.
  - Check whether product is supplied with power or not .
  - If the LED on the left side of the AT970 comes red lamp, AT970 is charging. If green lamp comes, Charging battery is complete.
- ④ 24pin USB data port
  - Connect 24pin data cable.
  - AT970 can interchange data with computer after sync is connected.
- ⑤ RS-232port
  - AT970 can use RS-232port connecting other products available.



## DOTH-100 Specifications

<b>Physical and Environmental Characteristics</b>		
Dimensions	22 cm L x 7.62 cm W x 3.7cm H	
Weight	Standard configurations - 510g	
Operating Temperature	-20°C to 55° C	
Storage Temperature	-20° C to 60° C	
<b>Performance Characteristics</b>		
Processor	Intel® Monahan™ PXA320 624 MHz processor	
Memory	128MB RAM/256MB ROM	
Operating System	Microsoft® Windows™ CE 5.0	
Display	3.5" QVGA with backlight, TFT-LCD, 262,144 colors, 240 W x 320 L (QVGA size)	
Audio	Speaker, Microphone, headset jack	
Port	USB 1.1 Host & Client, 24pin, AC adapter jack	
System Expansion	1 microSD slot (with secure cover)	
<b>Network Characteristics</b>		
GSM	Quad-band : GSM850/900/1800/1900	
	Normal Operation: -20°C to +70°C, Restricted Operation: -40°C to +70°C	
	Switch off: < -40°C and > +70°C, Storage: -40°C to +85°C	
GPS	SIRF III (optional)	
Wlan	802.11b/g with WPA2(2412~2462MHz) / Bluetooth 2.0 (2402~2480MHz)	
<b>Card Processing</b>		
Magnetic Card Reader	ISO7811, Track (1,) 2,3 bi-directional (Optional)	
Smart Card Reader	ISO7816.EMV2000 L1/L2 Certified (Optional),	
	1 x ID-1 full size card-slot, 3 x ID-000 SIM slot ( optional)	
RFID Reader	13.56MHz	
<b>Ultimate Industrial Devices</b>		
Barcode Engine	1D Laser & 2D imager standard (optional)	
Thermal Printer	58mm, 600 dots/s( 75mm/Sec), Roll φ30, 10M	
Camera	2.0 Mega Pixel with Flashbulb (optional)	
Fingerprint Sensor	Swipe electric field sensor, 128 x 8 Pixel @ 500ppi (optional)	
<b>Power Supply</b>		
Battery System	7.4V / 1800mAH Advanced Li-Ion Rechargeable	
Power Adapter	Input : 100 to 240 VAC 50/60Hz 1.2A Output : 9.5VDC 3A	
<b>Accessories</b>		
Desktop Cradle	Serial port, Additional charging slot, USB	
	mutual company receiving the certification	D.O.Tel Co., Ltd.
	Model name	DOTH-100
	Production time	2009.7
	manufacture/country	D.O.Tel Co., Ltd. / KOREA

# AS Information

## 1. A/S Center information

- 1) AS Counseling telephone number: 82-2-850-3636
- 2) Counseling time : Mon ~ Fri – 09:00~18:00  
The consultation does not Saturday, Sunday and Holidays

### AS Service address

DOTel. Co., Ltd. #412, Kolon Science Valley2, 811 Guro-dong, Guro-gu, Seoul, Korea 152-878

## 2. Before you request repair

- 1) Important data must do back up in advance.  
Data can be deleted such as data formats in repairing.  
We don't guarantee deleted data after A/S warehousing.
- 2) Please certainly write your telephone number and address.  
If you do not write your contact address, problems may happen to handle a product.
- 3) Please check user manual one more time before you request A/S.

3. Warranty terms - DOTH-100(PDA) : 1 year

4. Warranty contents

This can't be repaired free of charge in spite of warranty term in the following cases.

- A. The failure caused by negligence of the consumer or the inundation
- B. When you did disassembly or modification of your own accord
- C. The failure by Fire, earthquake, flood and other natural disasters
- D. When you had this product repaired except for appointed A/S center

**manufacture :** D.O.Tel Co., Ltd.    **www.dotel.co.kr**

## FCC & CE Information

This equipment has been tested and found to comply with the limits for a Class B digital device, pursuant to Part 15 of the FCC Rules. These limits are designed to provide reasonable protection against harmful interference in a residential installation.

This equipment generates uses and can radiate radio frequency energy and, if not installed and used in accordance with the instructions, may cause harmful interference to radio communications.

However, there is no guarantee that interference will not occur in a particular installation. If this equipment does cause harmful interference to radio or television reception, which can be determined by turning the equipment off and on, the user is encouraged to try to correct the interference by one or more of the following measures:

- Reorient or relocate the receiving antenna.
- Increase the separation between the equipment and receiver.
- Connect the equipment into an outlet on a circuit different from that to which the receiver is connected.
- Consult the dealer or an experienced radio/TV technical for help.

This equipment may generate or use radio frequency energy. Changes or modifications to this equipment may cause harmful interference unless the modifications are expressly approved in the instruction manual. The user could lose the authority to operate this equipment if an unauthorized change or modification is made.

This device complies with Part 15 of the FCC's Rules. Operation is subject to the following two Conditions:

1. This device may not cause harmful interference, and
2. This device must accept ant interference received, including interference that may cause undesirable operation.

CE

Hereby, D.O.Tel Co., Ltd. declares that this DOTH-100 is in compliance with the essential requirements and other relevant provisions of directive 1999/5/EC.

## RF EXPOSURE INFORMATION

The highest SAR value for this Handheld Printer Terminal is **0.235 W/kg (GSM GPRS Cellular Band) / 0.141 W/kg (GSM Cellular Band) / 0.672 W/kg (GSM GPRS PCS Band) / 0.362 W/kg (GSM PCS Band) / 0.772 W/kg (IEEE 802.11b Band)**. The FCC has granted an Equipment Authorization for this Handheld Printer Terminal with all reported SAR levels evaluated as in compliance with the FCC RF exposure guidelines. SAR information on this model phone is on file with the FCC and can be found under the Display Grant section of [http://www.fcc.gov /oet / fcc id](http://www.fcc.gov/oet/fccid) after searching on **FCC ID: QD5-DOTH-100**

Additional information on Specific Absorption Rates (SAR) can be found on the Cellular Telecommunications & Internet Association (CTIA) web-site at <http://phonefacts.net>.\*In the United States and Canada, the SAR limit for mobile phones used by the public is 1.6watts/kg (W/kg) averaged over one gram of tissue. The standard incorporates a substantial margin of safety to give additional protection for the public and to account for any variations in measurements.

In August 1996 the Federal Communications Commission (FCC) of the United States with its action in Report and Order FCC 96-326 adopted an updated safety standard for human exposure to radio frequency (RF) electromagnetic energy emitted by FCC regulated transmitters. Those guidelines are consistent with the safety standard previously set by both U.S. and international standards bodies. The design of this phone complies with the FCC guidelines and these international standards.

For more information about RF exposure, please visit the FCC website at [www.fcc.gov](http://www.fcc.gov)

### Near-Body Operation

To maintain compliance with FCC RF exposure requirements, maintain a **5mm**, separation distance between the user's body and the Handheld Printer Terminal, including the antenna, whether extended or retracted.