

Before starting...

1. This user manual may be changed without notice in accordance with improvements to the product or changes in available functions.
2. This user manual has been prepared based on information available at the time of publishing and may have technical or editorial errors or omissions.
3. The screen and shape of the product in this manual may differ from that of the actual product.
4. All the content of this manual is protected by Copyright Law.
5. All the rights for the software installed on this product belong to DOTel Co., Ltd. And are protected by Copyright Law.
6. Among the content specified in this manual, some functions may not be installed in your PDA (Wireless LAN, Bluetooth)

FCC NOTICE TO USERS:

This device complies with part 15 of the FCC rules.

Operation is subject to the following two conditions.

- (1) This device may not cause harmful interference and
- (2) This device must accept any interference received, including interference that may cause undesired operation.

IMPORTANT NOTE:

To comply with the FCC RF exposure compliance requirements, no change to the antenna or the device is permitted. Any change to the antenna or the device could result in the device exceeding the RF exposure requirements and void user's authority to operate the device.



During transmitter operation, in order to meet RF maximum permissible Exposure Safety Guidelines, a minimum distance of 0cm shall be maintained between this device and personnel.

This equipment may generate or use frequency energy. Changes or modifications to this equipment may cause harmful interference unless the modifications are expressly approved in the instruction manual. The user could lose the authority to operate this equipment if an unauthorized change or modification is made.

Consent Regarding Copyright and Use...

1. All the contents in this manual and PDA software are protected by Copyright Law and all the rights belong to DOTel Co., Ltd.
2. No part of this manual may be duplicated, renovated or translated into other languages without prior written consent. The act of duplicating, correcting or distributing this manual without permission is a crime punishable in accordance with Copyright Law.
3. As to instructions for separate business programs not specified in this manual, and questions about and after service for such programs, please contact the software provider.
4. For all other applications or programs installed by the user except the basic program, each software provider should specify contact information required to make inquiries or ask for technical support on the product manual or on the packaging, or enclose a separate manual with contact information.
5. DOTel Co., Ltd. Does not provide any warranty for all the software installed once PDAs are shipped out of the factory.
6. DOT is a trademark of DOTel Co., Ltd. Protected by law.
7. The logos and product names, Microsoft, Windows and Internet Explorer, are trademarks of Microsoft and MS Windows CE software installed on this device is a product officially licensed by Microsoft.
8. All the product names and program names used in this manual and the product are company names, symbols, trademarks or registered trademarks of each owner.
9. DOTel Co., Ltd. May ask the application providers to provide their software loaded in this product on request of mobile communication providers or for improvement or verification of the products.

1. Important Notices.

2. Before Using

- 2.1 Package Contents
- 2.2 Button Layout and Physical Features
- 2.3 Connection to a PC

3. Additional Functions

- 3.1 Wireless LAN
- 3.2 Bluetooth

4. Problem Solving and Warranty

- 4.1 Problem Solving
- 4.2 Contacting Customer Support
- 4.3 Product Warranty
- 4.4 communication and Product Specifications
- 4.5 Product specifications



1. Important Notices: Proper Usage and Battery Care

Be sure to carefully read this user manual, as not observing the cautions may cause injury of the user or other persons, or damage to property.

The manufacturer and seller do not take any responsibilities for any and all accidents due to not observing the cautions specified in this manual.

This product should be used only for the established purpose. Do not use the product for other purposes than those specified in the user manual.

If there is an odor of burning or excessive heat from the product while in use, remove the battery and immediately contact the customer service center.

Be sure to use the product in a bright place to protect your eyesight, as looking into the LCD screen in a dark place for a long period of time may hurt your eyesight.

We recommend you to back up important data in this product often. The seller and manufacturer do not take any responsibility for data loss, even during service or repair of the product. The manufacturer and seller as well as the customer service center do not take any responsibility for data loss.

Do not place the product near magnets or magnetic fields. It may cause failure of the product.

Do not handle the product with wet hands as it may cause malfunction of the product and, especially, if the AC adapter is handled with wet hands, there is a risk of electrocution.

Use the LCD screen with a stylus pen provided by the manufacturer or a non pointed tool. Otherwise, the LCD may be damaged.

The film attached on the LCD is a film used to protect the LCD during shipping. If the product is used with the film on, poor touch screen function may occur. Be sure to use the product after replacing the film with the LCD protection film separately provided.

1. Important Notices: Proper Usage and Battery Care

When using USB cable and adapter be careful with the direction of connector insertion. If it is inserted incorrectly it may cause a problem with the PDA or PC. Ensure the cable used is in good condition not having bent pins or damaged areas along the cord.

The product may not operate properly in extreme cold or heat. The proper operating temperature is between $-10^{\circ}\text{C} \sim 50^{\circ}\text{C}$. Be especially careful to avoid storing the product in a place in extreme temperatures, or moist areas. This may cause external change or product damage. Store in a cool dry place.

In following cases, warranty service will not be provided and repairs may be impossible:

- If the product has been disassembled or remodeled by the user;
- If the product has fallen into the water or stored in a moist place for a long period of time;
- If the product has been dropped from a high place or received excessive external shock.

Charge the battery fully for at least 30 minutes or longer before using the product for the first time. The product may not turn on before the battery is charged.

There is a risk of explosion if the battery installed is of the incorrect type. When replacing the battery be sure to check that you are using the correct one. Dispose of used batteries according to the instructions.

If battery not provided by the manufacturer are used, there is risk of product failure or explosion. Keep the battery away from children or pets to prevent them from biting or sucking the battery. Be careful to prevent metal objects from contacting the charging terminals of the battery as it may cause fire.

Turn off the power of the product in places where use of the product is prohibited. Especially where radio wave interference may occur such as in an airplane or in a hospital. Electromagnetic waves generated by the product not harmful to a human body may cause problems for electronic flight equipment or medical instruments.



1. Important Notices: Proper Usage and Battery Care

Do not paint or attach stickers to the product, especially if those paints or stickers contain metal ingredients. It may cause buttons not to operate or reception problems.

Do not use any power adaptor with this product except the one provided.

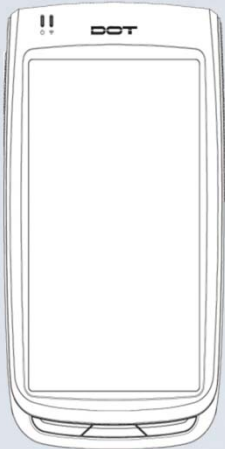
Provided adaptor

Model : KSAFE0500400W1UV-1 / Manufacturer : Kuantech(Shenzhen)Co. Ltd

2. Before using

2.1 Package Contents

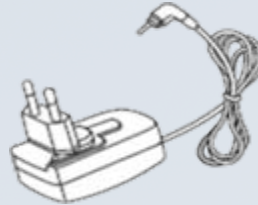
Basic Components



Device



Two Standard Batteries



A/C Adapter



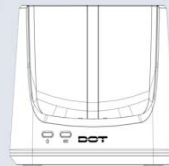
Manual



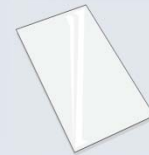
CD



Micro USB Cable



Cradle

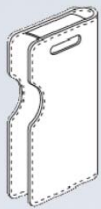


Touch Film



Stylus Pen

Additional Components



Leather case



Notice

The specification and components of this product may change According to the situation of the manufacturer.

2. Before Using

2.2 Button Layout and Physical Features

Part Description and Function





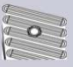


Name	Description
① LCD	Touch screen on which information is displayed
② Speaker	Where the sound is output
③ Buttons	Function Key
④ Battery Switch	Switch used to mount or remove the battery
⑤ Battery	Standard capacity battery
⑥ Power key	Switching the product on/off by pressing and holding this key
⑦ Reset key	Used to the product to reboot
⑧ Battery Charge indicator	Displays the status of battery charging and complete
⑨ WLAN indicator	Displays the status of WLAN links
⑩ Stylus pen holder	Stylus pen holder
⑪ Cradle Insertion Hole	Place to insert the cradle for charging and synchronization

2. Before Using

2.2 Button Layout and Physical Features

Button Functions

Button	Function
	Function Key1
	Function Key2
	Function Key3
	To turn on/off the product, pressing and holding the power key for three seconds. To turn on/off the LCD while the device is on, pressing the power key.
	Used to reset the product to reboot it when a problem has occurred during use.

2. Before Using

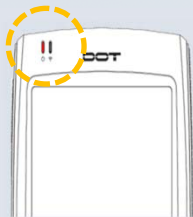
2.2 Button Layout and Physical Features

Power connection and charging



1 Connect the device to the cradle.

2 Connect an adapter to the back of the cradle.



3 While charging, the red LED light will be on.
When charging is complete, light will turn green.

Battery charging and using time

	Standard Battery
Charging time	About 3 hours
Standby time	About 500 hours



Notice

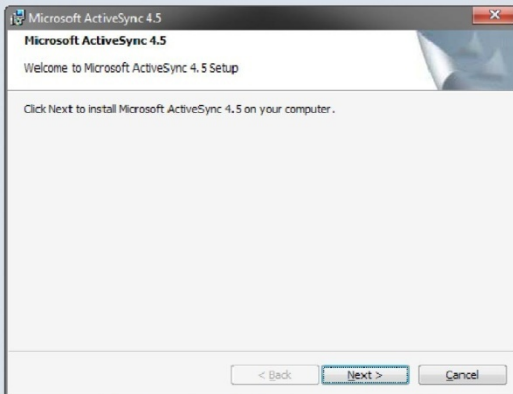
- The Charging time is calculated based on using the proper charging cradle.
- Charge, talk and standby time may depending on user environment.

- Battery life will vary by user service type, environment, battery age.
- If user does not use the device, the battery will lose charge. The battery is consumable product.
- If battery usage time decreases below standard a new battery should be purchased.
- PDA warranty is 1 year. Battery warranty is 6 months.

2. Before Using

2.3 To connect with a PC

To install Active Sync



1

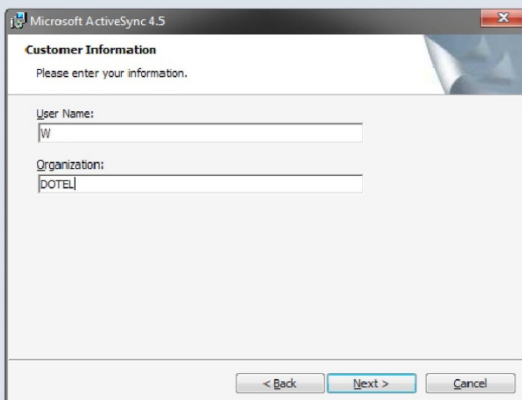
In order to connect (synchronize) the PDA with a PC, Microsoft program called ActiveSync is required. For installation, execute 'Install Program' and press 'Next'. At this time the PDA and PC should not be connected.

2 Agree with the license for Microsoft ActiveSync. Select 'Agree' and press 'Next'

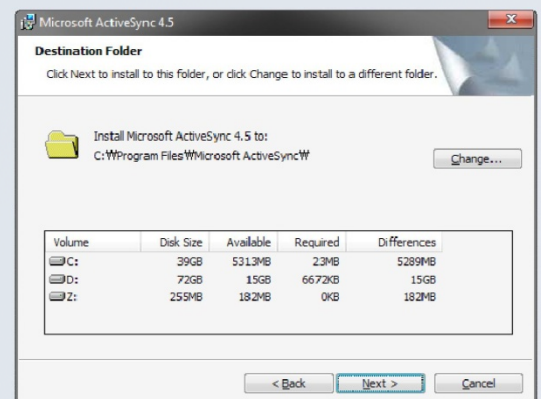


3

Enter 'User Name' and 'Organization' and press 'Next'



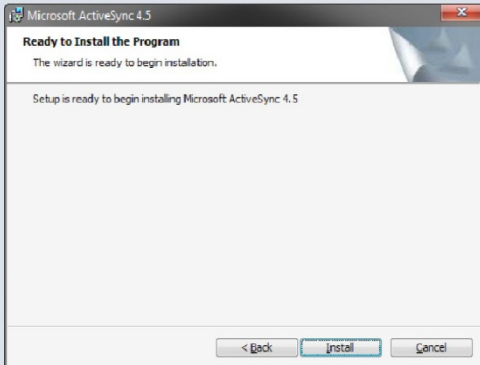
4 Check the disk capacity which can be used for installation and change the installation location by pressing 'Change' or press 'Next' if you want to install it in the default Location.



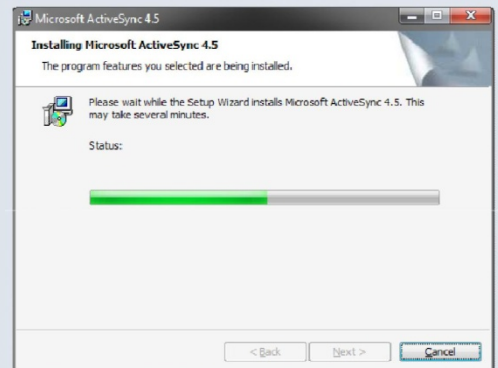
2. Before Using

2.3 To connect with a PC

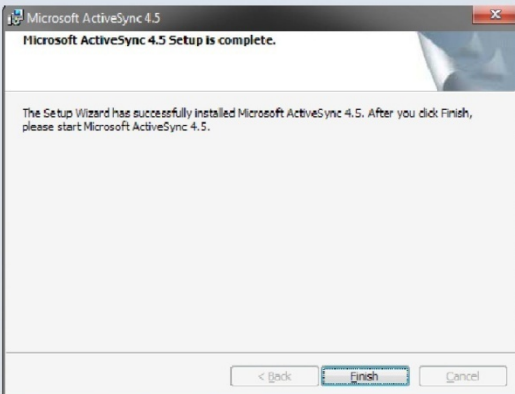
To install Active Sync



5 ActiveSync is now ready to install. Execute Installation by pressing 'install'

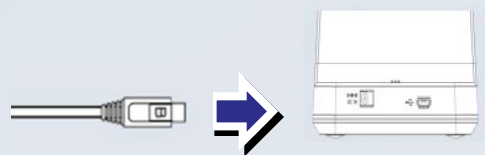


6 Installation of ActiveSync will be performed. It may take several minutes depending on the environment of the user PC.



7 Once installation of ActiveSync has been Completed finish installation by pressing 'Finish'

8 Now, connect the PDA with the PC Using the cradle.



2. Before Using

2.3 To connect with a PC

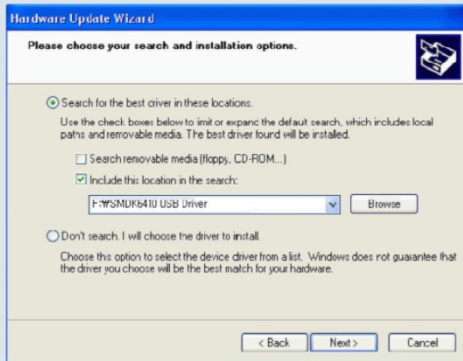
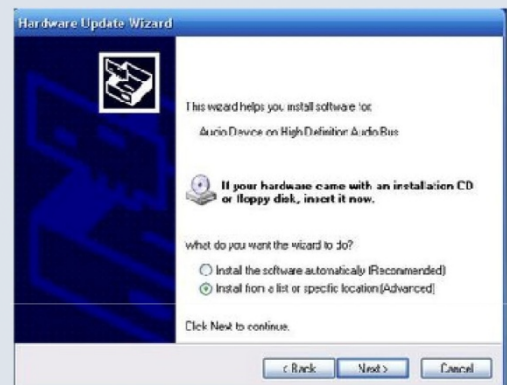
To install Active Sync



9

'Found New hardware wizard' will start. Select 'Yes, connect whenever a device is connected' and press 'Next'

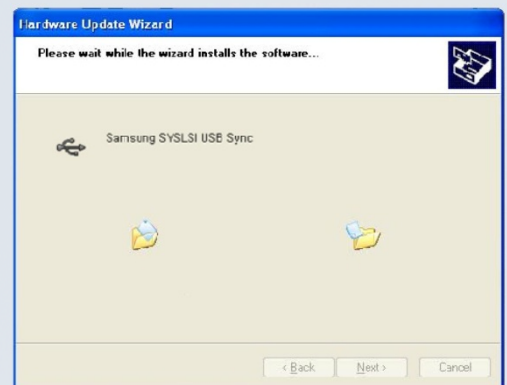
10 'Generic USB Serial' is found. Select 'Install at listed or specific location' and press 'Next'



11

Press 'Next' after finding the driver file by pressing 'Browse'

12 A driver adequate for PDA will be installed.



13

When the window for compatibility checking appears, proceed by pressing 'Continue'

2. Before Using

2.3 To connect with a PC

To install Active Sync



14 Once the installation of the driver has been completed. Press 'Finish'

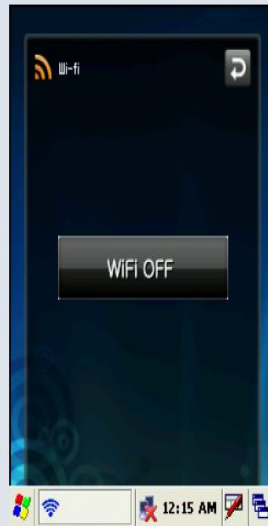
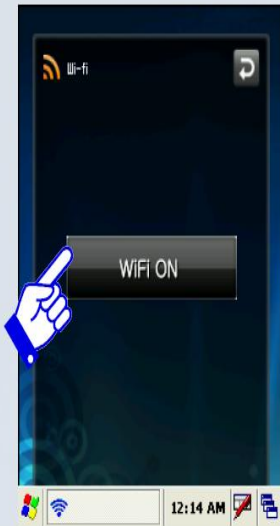
15 Installation of ActiveSync has been completed and synchronization will start.



3. Functions

3.1 Wireless LAN

Wireless Manager



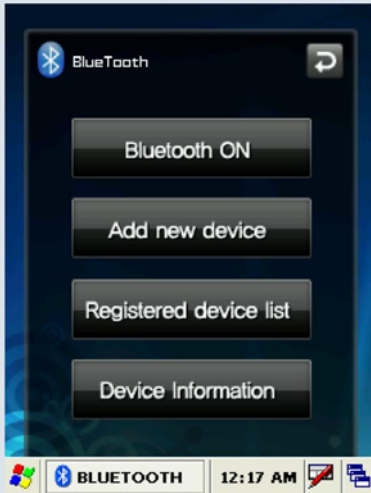
It can be controlled by pressing on or off as shown in the figure above after selecting 'Start' -> 'Program' -> 'WiFi' from the tool bar at the bottom of Windows wallpaper.

WLAN on/off state is maintained even after the system is rebooted.

3. Functions

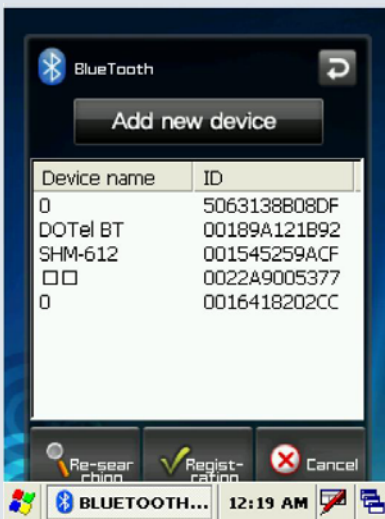
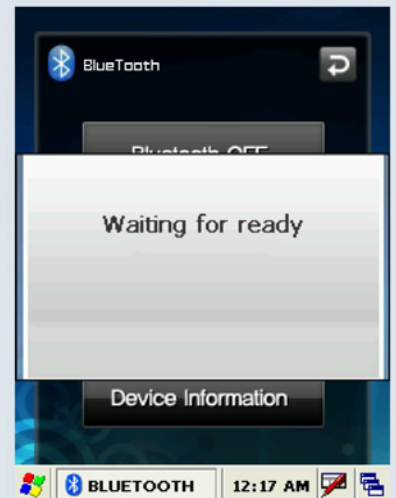
3.2 Bluetooth

Bluetooth



Use this menu to activate or deactivate Bluetooth function. Bluetooth function can be used only after turning the module on by pressing 'Bluetooth On' button.

When Bluetooth function is not being used, the function should be turned off by pressing 'Bluetooth Off' button In order to extend the battery life.



Place the Bluetooth device within 10meters of this equipment.

Press "search Device" button.

Press "Register" button after selecting the Bluetooth device to be connected from among the list of devices searched.

3. Functions

3.2 Bluetooth

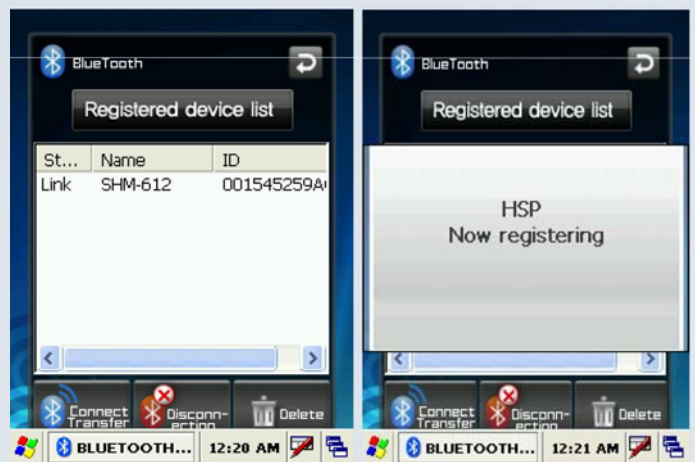
Bluetooth



When the window asking to enter the pin code pop up, enter the pin code and press “Confirm”. Each Bluetooth device has a unique pin code which is used for certification. Check the pin code with the manufacturer of The Bluetooth device.

If ‘Registered Device List’ Window appears with a popup window informing that connection is made, connection is successfully achieved.

If a failure window pops up, the steps should be taken again from the step #1 in order.



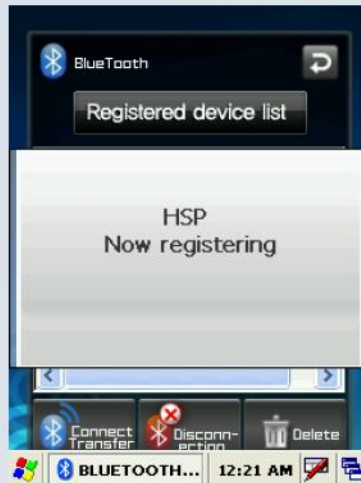
Caution : Please refer to the manual of the Bluetooth device to be connected with this equipment as the method to execute each Bluetooth device differs from one device to another. Prior “Pairing” is required for Bluetooth devices. Once pairing is done for Bluetooth devices, connection can be made without being required to pair again later.

However, if pairing information is deleted or the device list item is deleted by repair, pairing should be done again.

3. Functions

3.2 Bluetooth

Bluetooth



Press “Registered Device List” button.

Press ”Connect/Transmit” button after selecting the item which has been connected before from the “Registered Device List”. A popup window will appear to inform that the connection is made and connection status will be displayed in the status blank of the list.

In case connection has not been made, start from the step #1 again. In order to disconnect the device connected, press “Disconnect” button.

Caution : If the device has been paired before, connection can be made right away without pairing procedure. The list of devices paired before will be shown in the “Registered Device List”.

3. Functions

3.2 Bluetooth

Bluetooth



The Device Information screen shown information about Bluetooth device such as device name, device ID (BD address), support profile, Bluetooth version, firmware version and software version.

In order to delete a device once connected, press “Delete” button after selecting the item to be deleted. A device currently connected cannot be deleted. Delete the list after disconnecting the device.

- * Reference : Even after the device is deleted from the ‘Registered Device List’, pin code window can popup if connection is requested by the Bluetooth device. At this time, connection can be made by pressing ‘Confirm’ button after entering the pin code

4. Problem solving and Warranty

4.1 Problem solving

Problem solving

1. Check followings first when a problem occurs while using the product. If the problem is still not solved, first contact the dealer you bought from.
2. In case of the delayed response, you can reach the manufacturer. DOTel's Customer service Phone No. : +82-2-850-3243

Problem

Product does not turn on.

No sound from the speaker.

Screen is dark.

Some points in manual are unclear.



Solution

1. When the product is shipped from the factory, the circuitry is disconnected. Press the power button for 2 seconds or longer, when the product will turn on.
 2. Check if the battery is fully charged and charge the battery before using the product.
-

1. Check if the volume of the product is not set at 0.
-

1. Enter into 'Setup' and adjust the lighting.
-

1. Use customer support in the Web site or contact customer center over phone, and a customer support agent will be glade to help you.

4. Problem Solving and Warranty

4.1 Problem solving

Problem

The product seems to be hot.

The PC does not recognize the product.



Solution

1. This product is designed to properly radiate the heat generated inside the product through the case.
 2. If the product is used for a long period of time or the adapter is connected for long, you may feel warmth from the case please use the product at ease as there is no problem with the product.
-
1. If the connection is frequently cut and instable, please connect the product not to a separate hub but directly to the USB terminal of the PC.
-

4. Problem Solving and Warranty

4.2 Customer support information

.....

1. Contacting the customer service center

1) Web site

- Before contacting customer support you may wish to try to find troubleshooting help at our website : www.dotel.co.kr
- Click ‘Contact’ on the DOT website.
- Fill in the form and click the ‘submit’ button.

2) Content of service

Free or charged repair of all the models of PDA and sale of various accessories.

2. Before asking for repair

1) Be sure to check the content of ‘Problem solving’ in the previous pages before asking for repair.

2) Do not forget to backup important data contained in the product in advance. Data may be deleted during repair due to memory formatting, etc. The Company does not take any responsibility for the data lost during servicing.

3) Be sure to write your telephone number and address. If there is no contact information for the customer, a problem may occur in the process.

3. Quality Assurance

1) The warranty of the product is on the overleaf of the manual.

2) The products manufactured and sold by the Company are products shipped after going through strict quality control and inspection of DOTel Co., Ltd

4. Problem solving and Warranty

4.2 Contacting Customer Support

.....

3) Warranty period

- Main body : 1 year
- Accessories (consumables) : 6 months (battery and items excluding the main body)
- Mandatory period to keep spare parts in stock : 3 years from the date of releasing the relevant model.

4) Content of warranty

When a problem occurs during normal use within the warranty period, the customer service center of the dealer shall provide legitimate material and immaterial service in accordance with Consumer Damage Compensation Regulation by item. In the following cases, repair may be inevitably impossible even within the warranty period and at a cost.

- a. if the product is out of order due to shock or water-logging caused by a mistake of the consumer,
- b. if the product has been disassembled or remodeled;
- c. if the product is out of order due to natural disaster such as fire, earthquake or flood; or
- d. if the product has been repaired by persons other than the designated service staff of DOTel. Co., Ltd. , or in a non-designated service location

Individual matters not specified in this article shall be reviewed from the aspect of the internal regulation of DOTel Co., Ltd. For after service and customer support but aiming at convenience of the final consumer.

5) Warranty area : Korea

4. Expense for repair

1) If the product has failed due to defect of the product it self within the warranty period, it will be repaired at free of charge in accordance with the warranty standard of the Company and Consumer Damage Compensation Regulation.

2)The repair expense shall be decided in accordance with the repair price for each item in the internal regulation of the Company.

3) Even within the warranty period, if it falls under article 3-4 above, a certain amount of repair expense will be charged. Please understand as repair may not be possible in some cases.

- Hardware manufacturer : DOTel Co., Ltd. www.dotel.co.kr

4. Problem Solving and Warranty

4.3 Product Warranty

Product Warranty

Classification	Content
Model name	DOTH-500
Date of purchase	
Purchased from	
Manufacturing No.	
Warranty period	One year from the date of purchase

Repair charge regulation

Product failure type		Within warranty period	After warranty period
If the failure occurs within 10 days after the purchase		Replace	N/A
Repair able	When failure has occurred more than 3times due to same defect	Free repair	Repair at a cost
	When failure has occurred more than 4times due to same defect	Replace	Repair at a cost
Not repair able	If repair is impossible within one month	Replace	Replace after deducting a fixed amount of depreciation
	If repair is impossible due to unavailability of repair part	Replace	Replace after deducting a fixed amount of depreciation
	If replacement is impossible	Refund	Refund the amount after deducting a fixed amount of depreciation and adding 10 percent



4. Problem solving and Warranty

4.4 Communication and Product Specifications

Communication Specifications

Classification	Content
WLAN	Frequency used: - 802.11b/g: 2412 ~ 2462 MHz Modulation - BPSK / QPSK/CCK/ 16- QAM/ 64-QAM
Bluetooth	Frequency used: 2402 ~ 2480 MHz Modulation : GFSK

Note

This device use already certified module (TX Module FCC ID: TWG-SDCM30AG)

The TX module was certified with both 2.4G and 5G bands but this device only uses 802.11 b/g mode of 2.4G band and the TX module is limited to operated 2.4G b/g mode only.

4. Problem solving and Warranty

4.5 Product Specifications

Product Specifications

Classification	Content
C P U	ARM 11 / 800MHz
O S	Windows CE5.0
R A M	128MB
R O M	256MB
DISPLAY	TFT LCD MODULE 5.01INCH,262K COLOR with Touch screen panel
INTERFACE	USB 2.0 (Micro USB)
BATTERY	Standard type : 2800mAh
SIZE	149(L)*86(W)*17.9(H)mm
WEIGHT	200g
ADAPTER	5V/4A