

Smart Navi (DOTN-400)

User's Manual (V. 1.0)



@ COPYRIGHT NOTICE

All rights reserved. No parts of this publication may be reproduced or transmitted without the prior permission of D.O.Tel. "Smart Navi" is trade mark of D.O.Tel

Notice

1. “Change the batter before first use”, if the device is not turned on, or Battery remainder indicates Low.
2. “Reset the Device before first use”, Battery is cut off from Device when it was shipped from factory to prevent discharging during transportation or storage.
3. “May take over 5 min. or more than it to get the GPS signal” in first time use or after long time storage.

Table of Contents

1.	Important Safety Information	3
2.	Before using Device	6
2.1.	Components of Product	6
2.2.	Names and Functions of Element on Device...	7
2.3.	Installing	9
	Installing on Car	
	Inserting SD/MMC card	
2.4.	Battery mode and Recharging	11
	Power Mode	
	Recharging	
	Battery Isolation	
	Battery power Mode	
2.5.	Bootting and Device setting	14
	System Reset	
	Preference	
	Adjusting Volume	
2.6.	Connecting System with PC	15
	USB Mass Storage Device	
	ActiveSync	
	Distinguishing Between Removable Disks	
	Coping Files	
	Safely Removing Hardware	
2.7.	Installing USB Driver	24
	Installing Windows98 USB Driver	
	Manual Installation	
3.	Using Supplementary Programs	31
3.1	Before using.....	32
3.2.	Getting Ready.....	32
3.3.	Opening Folder.....	33
3.4.	Music Player	34
	Names and Functions	
	In-dept Description of functions	
	Search of Playing Position	
	Functions of Control Buttons	
	Adjusting Volume and Silencing	
	Storing Music File and Playing Music	
	Displaying Playlist	

Table of Contents

3.5.	Movie Player	37
	Names and Functions	
	In-Depth Description of Functions	
	Functions of Control Buttons	
	Adjusting Volume and Silencing	
	Storing Movie File and Playing Movie	
3.6.	Picture Viewer	41
	Names and Functions	
	In-Depth Description of Functions	
	Functions of Control Buttons	
	Storing Image file and Viewing Image	
3.7.	Bluetooth Hand Free.....	44
	Names and Functions	
	In-Depth Description of Functions	
	Functions of Control Buttons	
	Pairing Mobile phone and Connecting	
	Connecting and Disconnecting with Mobile Phone	
	Automatic connection to Mobile Phone	
	Dialing and Hanging up	
	Answering	
	Program Information	
3.8.	Setting Environments	53
	Names and Functions	
	In-Depth Description of Functions	
	Functions of Control Button	
	Checking Battery Conditions	
	Time Setting	
	Adjusting Brightness of Backlight	
	Language Setting	
	Touch Screen Calibration	
	USB Connection Setting	
	System Information	
3.9	Upgrading Supplementary Programs	61
4.	Others	63
4.1	Trouble Shooting	63
4.2	System Specifications	64
4.3	Warranty	65



1. Important Safety Information

Check the conditions of the navigator before driving. Operating the navigator while you drive is very dangerous. If you need to operate the navigator, park your car on safe location before operating.

Search the path before you drive, Refer the map on screen only when you are absolutely sure that you are in safe conditions.

Information from the navigator such as voice instruction or the maps may be different from the actual road conditions. The traffic signals and regulations on the actual roads shall be observed, and Special attention shall be paid to traffic situations and pedestrians around you.

Do not use the system for measuring driving speed or distance. The system is only for navigation.

GPS signals may vary in sensitivity dependent upon location of your car. You may suffer from weak signal receiving inside a tunnel or under an overpass or a tall building, and it may affected by overcast sky for thick fog.

GPS signal can be interfered under following situation.

- In case GPS antenna is covered by something.
- Under front window coated with metal materials
- In case special device which interfere GPS signal reception is installed in car

Install the system on appropriate location inside your car. Do not install the system on a location that may cause trouble in operation of airbags or obstruct your vision while you are driving.

When you install the system, remove any foreign materials from the sucker of the mount and surface of the window. And fix the system while paying special attention to prevent air from being introduced between the sucker and the window surface. Any damage of product or other objects inside your car caused by detachment of system from the window because of poor suction is user's responsibility.

3

Enjoy your driving. Improve your safety and comfort.



1. Important Safety Information

Do not leave the system under direct sunlight or location subject to heat from the engine of your car for an extensive period. Heating the battery may cause explosion, Do not leave the system unattended for a prolonged period when temperature is high as in summer.

Do not expose the system to moisture or heat. Or rapid changing temperatures. Condensation may take place inside the system. If the system is exposed to high humidity, dry the system immediately, and use the system only after the system is free from moisture.

If you disassemble, reassemble or modify the system without consent of manufacturer, it may cause abnormal operation of the system. In such a case, you are solely responsible for the trouble.

The system contains lithium-ion battery that may cause explosion or leakage of hazardous liquid. Never give an impact to or destroy the system, and do not keep the system together with objects probable of explosion of gas or liquid, or fire.

Do not use A/C D/C adapter in the environment of high humidity. And never touch the adapter with wet hands. You may receive an electric shock. Do not wrap the adapter with sheets of paper, vinyl or cloth while you use the system, and make sure of proper ventilation for cooling the adapter. Please note that you are using the correct power source as indicated on the housing or the package.

Do not exercise excessive force to the system and do not clean the system with the power kept on. Do not use paper tissue generating dust, or rigid material probable of scratch when you wipe the screen. Use soft cloth only. Do not use detergent or chemicals for cleaner.

When you do not use the SD/MMC card, protect the system from dust or moisture, and pay special attention to keep the slots free from foreign materials. Always make sure that the slot is free from foreign materials before inserting the memory card into the

Before Using Device

Component of product	6
Names and Functions of Elements on Device	7
Installing.....	9
Installing on your Car	
Inserting SD/MMC Card	
Power mode and Battery Recharging	11
Power Mode	
Battery Recharging	
Battery Isolation	
Battery Power Mode	
Booting and Device Setting.....	12
System Reset	
Preference	
Adjusting Volume	
Connecting System with PC	15
USB Mass Storage Device	
ActiveSync	
Distinguishing Removable Disks	
Coping Files	
Safely Removing Hardware	
Installing USB Driver.....	22
Installing Windows98 USB Driver	
Manual Installation	



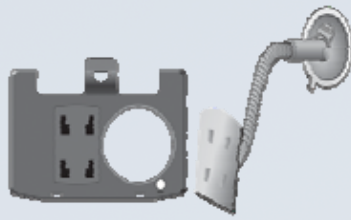
2. Before Using Device

2.1 Components of Product

Standard Components



<Main body>



<Holder + Suction mount>



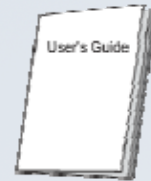
<USB cable>



<Automobile cigar Jack>



<Install CD>



<User's manual>

Optional Components



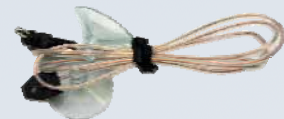
AC/DC
Adapter



SD/MMC
Memory Card



Bluetooth
handsfree Mic

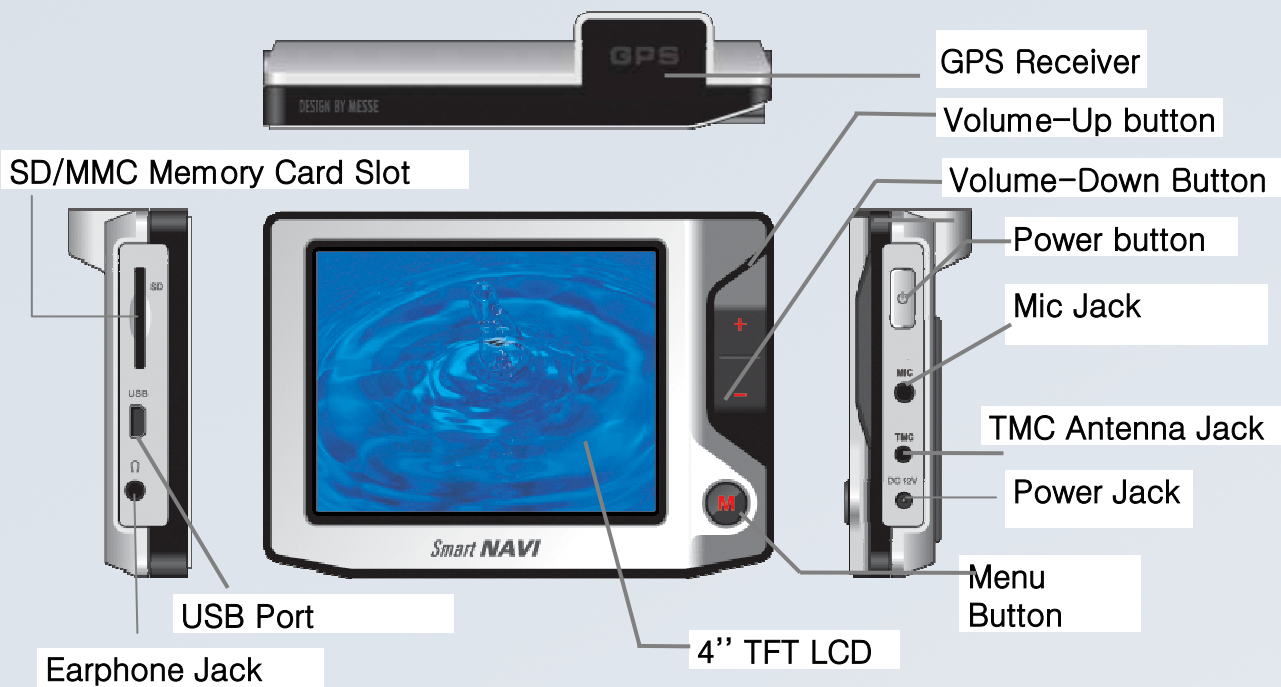


TMC Antenna

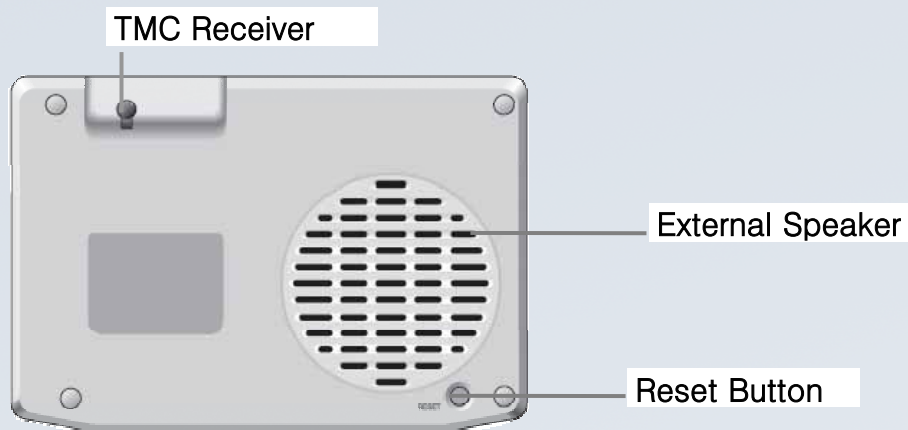
2. Before Using Device

2.2 Names and Functions of Elements on Device

Front



Back



7

Enjoy your driving. Improve your safety and comfort.



2. Before Using Device

2.2 Names and Functions of Elements on Device

.....

Names and Functions

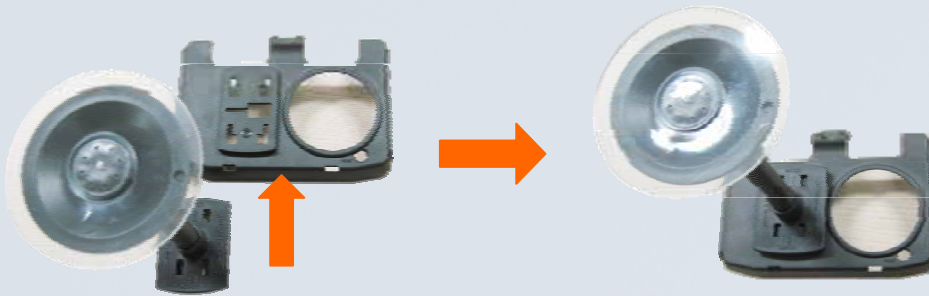
Name	Function
GPS Receiver	The receiver receives data from satellite.
SD/MMC Memory Slot	The Slot accommodates the SD/MMC memory card. Insert the memory card into the slot and lightly press the card. The card will be seated in place inside the slot. When you remove the memory card from the slot, first release the locks of the card inside the slot, and then pull out the card. Pay attention to the orientation of the card being inserted, and never insert object other than the SD/MMC memory card.
Earphone Jack	The jack accommodates an earphone.
External Speaker	The speaker plays voice instruction or other sound.
Power Jack	The jack is connected to A/C D/C power, or the cigar jack in an automobile
USB Port	The port accommodates the USB cable when the system is connected to PC.
Volume-Up Button	Pressing the button once increments the volume by one level. (Refer to 2.5. "Bootling and Device Setting/Adjusting Volume")
Volume-Down Button	Pressing the button once decreases the volume by one level. (Refer to "2.5. Bootling and Device Setting/Adjusting Volume")
Menu Button	Pressing the button runs the menu program.
Power Button	Pressing the button switches the system to the power-saving mode. Pressing it again returns the system to the operation mode (Refer to "2.4 Power Mode and Battery Recharging").
Reset Button	Pressing the button initializes the system (Refer to "Bootling and Device setting/System Reset")
Mic Jack	The Jack accommodates the Mic.
TMC Antenna Receiver Jack	The Jack accommodates the TMC antenna.

2. Before Using Device

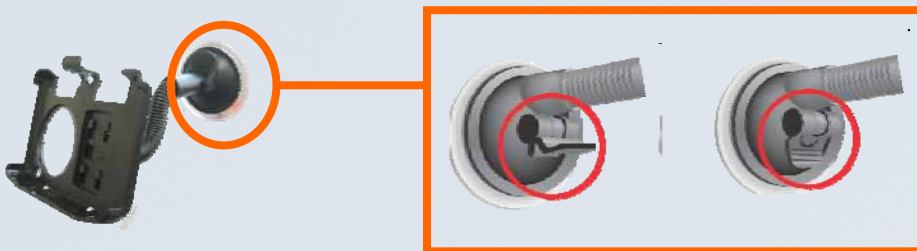
2.3 Installing

Installing on your car

1. Connect the holder and suction mount as shown below.
The part of mark "close" on suction mount should be pushed toward upper,

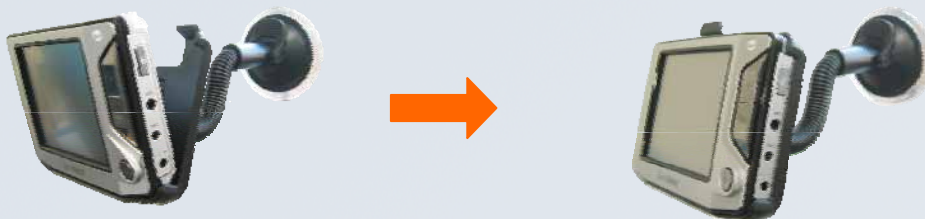


2. After you clean window, attach the suction mount. then, Press tightly the sucker on the mount on the window of your car, and turn the locking lever down.



<Attachment on the window >

3. Place the main body into holder.
The clip on top of the holder should be fixed at groove on top of main body.



2. Before Using Device

4. Connect the cigar jack to the power receptacle.



Lightly press [Reset Button] on the rear of the body to initialize the system. (Refer to “2.5 Booting and Device Setting/System Reset”).

Do not install the system on a location that may cause trouble in operation of airbags or obstruct your vision while you are driving.

Inserting SD/MMC Card

Insert SD/MMC memory card into the slot while paying attention to orientation of the card as shown below:



Exerting excessive force to insert into the slot in the wrong direction may damage the SD/MMC card or slot.

The system supports SD/MMC type memory and it doesn't support new type of SDHC memory card. Please confirm the memory type before using.

2. Before Using Device

2.4 Power Mode and Battery Recharging.

Power Mode

Power Mode	Conditions of charged battery
External power mode	Power is supplied to the system from the AC/DC adapter or the cigar jack in your: The LED of [Menu Button] lights RED. (Refer to “3.8 Setting Environments/Checking Battery Conditions”)
Battery power mode	Power is supplied to the system from the battery with the AC/DC adapter or Cigar jack disconnected. The LED of [Menu Button] is turned off : Battery remainder is more than 40–50%. The LED of [Menu Button] blinks : Battery remainder is less than 40–50%. (Refer to “3.8 Setting Environments/Checking Battery Conditions”)
Power saving mode	Pressing [Power button] switches the system to the power saving mode. Pressing the power button again returns the system to the operation mode.
Forced power saving mode	When the battery remainder is less than 10 % of its full capacity, the warning window pops up. In such a case, immediately recharge the battery. If the battery is almost discharged, it enters forced power saving mode automatically. Once it enters forced saving mode, it doesn't wake up until AC/DC adapter or car cigar jack is connected to the system.



Battery remainder can be different according to the environment of use.

Battery Recharging

The battery can be recharged by connecting A/C D/C adapter or Car cigar jack to the system. It is still recharged while using.

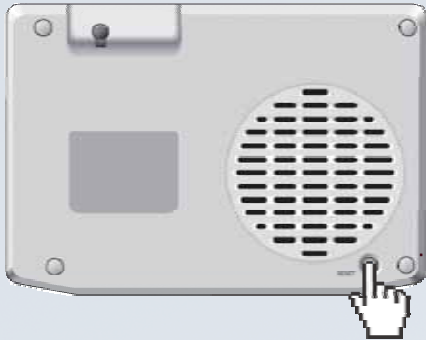
It takes three hours or longer to fully charge the battery from the forced power saving mode. (When using the navigation function only in the preference conditions.)

It is possible to operate the system with the fully charged battery for about two hours (When using the navigation function only in the preference conditions.)


2. Before Using Device

Battery Isolation

When you don't use device for long time, press [Reset] button for longer than 3 seconds as shown below until the screen turns off. Then, the battery is isolated from the internal circuit electronically. You can prevent the battery from being discharged.



1. Press Reset button and keep it pressed for 3 longer seconds.
2. Confirm the screen turns off.
3. Release reset button.

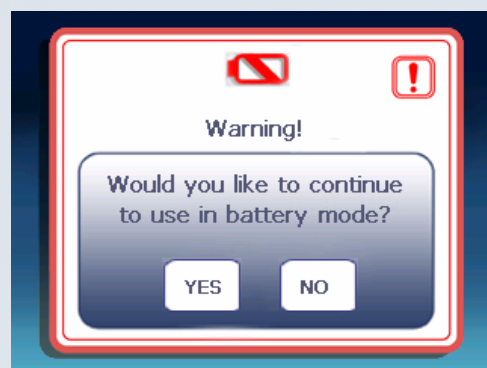
 When the device fully discharged, If it doesn't wake up even after you connect AC/DC adapter or car cigar jack to the system, Press reset button. Then, the system initialize and boots up.


Battery power mode

When the power mode switches from external power mode to battery power mode, After it passes 5 minute, the following warning message asking whether you continue the batterymode pops up on screen. If you don't click [YES] button within 2 minutes, the system will enter power saving mode.

If you select [YES] button, it operates on "Battery power mode"

If you select [NO] button, it enters "Power saving mode".



 After the system enters "Power saving mode", because you didn't press [YES] button within 2 minutes, if you return back to operation mode by pressing Power button, the warning message is still shown on screen. From this time, even though you don't press [YES] button after 2 minutes passes by, The system will not enter "Power Saving mode".

2. Before Using Device

2.5 Booting and Device Setting.

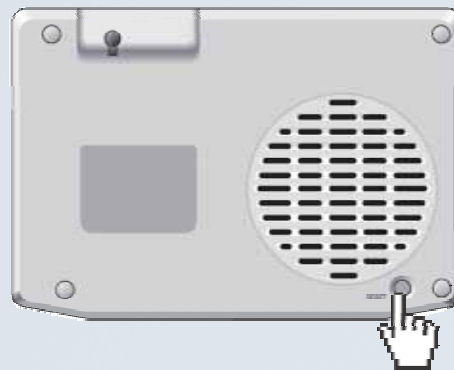
System Reset


When you operate the system for the first time after unpack, you should press reset button on the rear of the body. When the device is released from factory, the battery is isolated from internal circuit in order to keep it from discharging. If you lightly press the reset button, the battery is connected to the internal circuit and the system initialize and boots up.

When the battery is fully discharged, the battery is disconnected from internal circuit. In this case, if you want to use the system again after recharging, you should boot up the system by pressing the reset button.

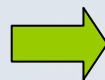
When the system is shut down due to fault in programs, you can restart the system by pressing the reset button.

Lightly press Reset button on the rear of the body as shown right.



 In case the system shut down due to fatal fault in operation and the system can't wake up again abnormally, Isolate the battery referring to "2.4 Battery isolation". After that, Restart the system by pressing reset button again.

After system reset, the following boot screen is shown, and the system starts up. If you don't press any Icon within 5 minutes on menu screen, the system runs navigation program automatically.



2. Before Using Device

2.5 Booting and Device Setting

Preference

Brightness of the backlight and the sound volume upon initial power supply are set as described in the table below:

Setting	Defaults
Backlight	Level 4(Lowest level: 1, Highest level: 4)
Volume	Level 7(Lowest level: 0, Highest level: 10)

Adjusting Volume



Volume-Up button

Volume-Down button

Press [Volume-Up] button or [Volume-Down] button on the front of the body.



A box indicating the current volume is displayed as shown left. Pressing [Volume-Up] button or [Volume-Down] button increases or decreases the system volume by one level.



You can adjust the volume from Volume 0 to Volume 10. When there is no further input, the volume entered last is stored. The volume indication box automatically disappears after two seconds.



Volume adjusted with the volume buttons is applied to the whole system. However, the volume of the music player, or movie player and bluetooth problem affects only the concerned program.

2. Before Using Device

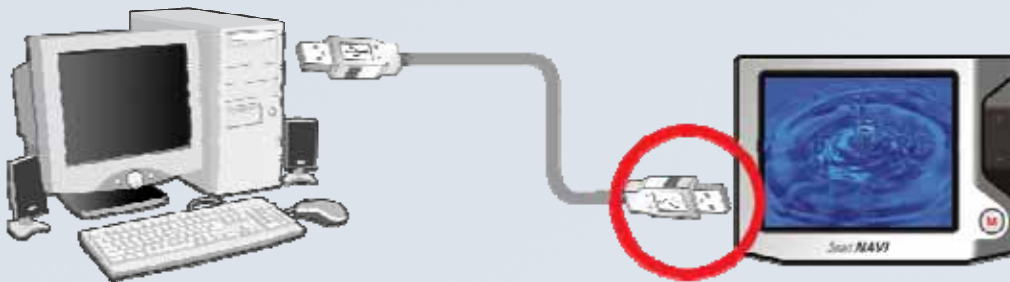
2.6 Connecting System with PC

It is possible to copy map data or user data like music, movie and picture files into the built-in flash memory inside the body or the SD/MMC memory card by connecting the system with PC via the USB cable.

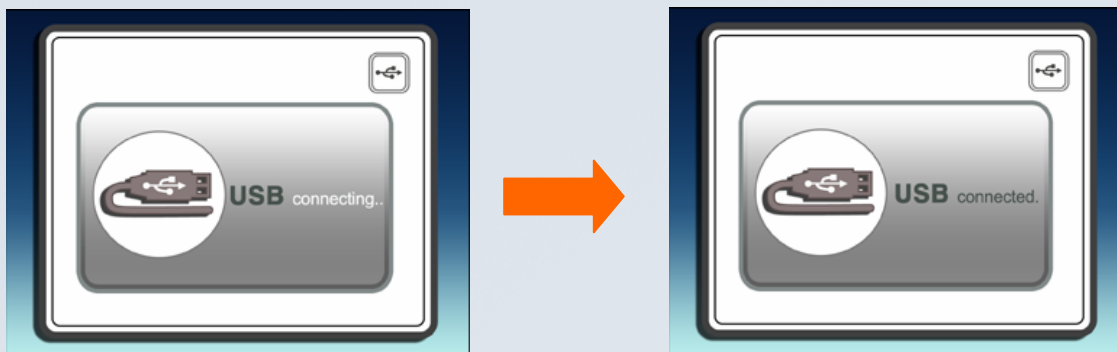
There are two ways to connect the system with PC: “ActiveSync” and “USB Mass Storage Device”. You can select the desired mode as you need in “Setting Environment” (Refer to 3.8 “Setting Environment/USB Connection Setting”)

USB Mass Storage Device

If you simply connect the system with PC using USB cable, Internal flash disk and SD/MMC memory card are allocated as “Removable Disk” at PC side. And it enable the user access files in device more conveniently. The way to connect with PC is show as below.



When the system is connected with PC, following screen is shown on device.



- ⚠ The system operates with the power from the USB port of PC when the system is connected with PC. Therefore, the system shall be connected with the USB port where the power is normally supplied. The system may not be capable of normal operation when connecting with the USB hub. The battery is not recharged via the USB port.

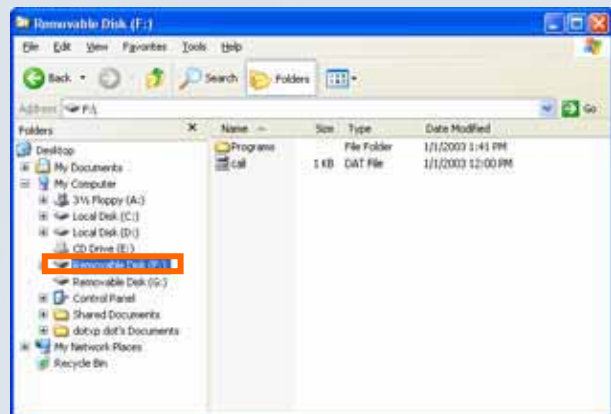
2. Before Using Device

2.6 Connecting System with PC

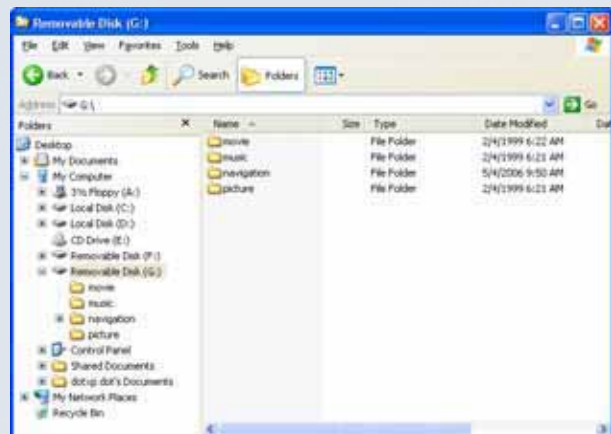
Distinguishing between Removable Disks

When the system is normally connected with PC, you can see two “Removable disk” drives in the windows explorer on PC as shown below. “Built-in flash memory” and “SD/MMC memory Card” are indicated in the following Windows Explorer as “Removable disk (F:)” and “Removable disk (G:)” respectively.

The first drive (F:) corresponds to “Built-in flash memory”.
Mainly It contains Menu and Supplementary programs as shown right.



(G:) driver corresponds to “SD/MMC Memory Card”.
Mainly it contains map data and User data used in each supplementary programs.



⚠ Drive Name (F:, G:) allocated in windows explorer can be different according to the PC environment of use.

2. Before Using Device

2.6 Connecting System with PC

Copying Files

It is not allowed to execute functions other than file copying and moving when the system is connected with PC via USB cable: The button, the Touch screen, the system reset and the GPS receiver becomes inoperable. Disconnect USB cable once map data updating or file copying work is complete. When disconnecting USB cable, the system restarts.



Do not store user data such as music, movie and picture files into “Built-in flash memory”

Be careful of removing menu and supplementary programs basically stored in “Built-in flash memory” region. It may cause trouble in system operation.

Do not disconnect the USB cable or remove “SD/MMC memory” while you are copying files. After you finish copying files, Be sure to execute “Safely Remove Hardware”. (Refer to 2.6 Safely Removing Hardware)

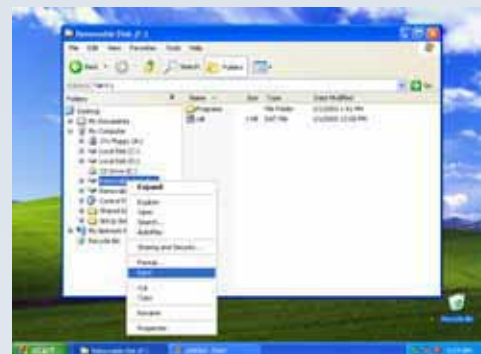
It is recommended to keep the SD/MMC memory remain empty space at least 2MB for the purpose of storing log data of Map s/w except user data.

Safely Removing Hardware

Window XP:

Click the right button of mouse over “Removable Disk” to eject the disk as shown on the right figure.

Right figure shows the way removing [F:]drive which corresponds to “Built-in flash memory” and you can remove “SD/MMC memory card” as same way



2. Before Using Device

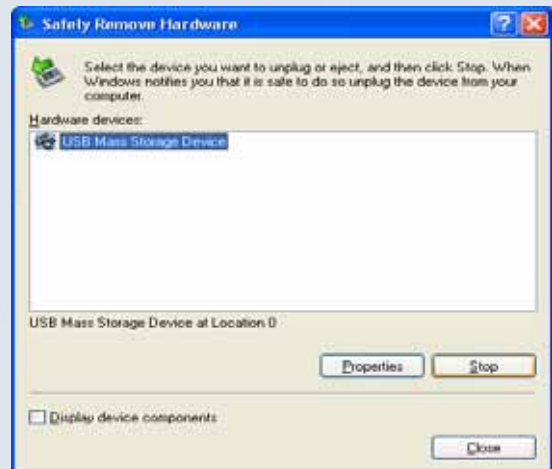
Windows 98/SE/ME/2000/XP:

Double click the Windows tray icon to execute ‘Safely Remove Hardware’ as shown below.



Then, Following windows are shown on PC.

Select “USB Mass Storage Device” and Click [Stop] button.



Select the drive which you want to remove and

Click [OK] button.

Right figure show an case removing [H:] drive which corresponds to SD/MMC memory card.



2. Before Using Device

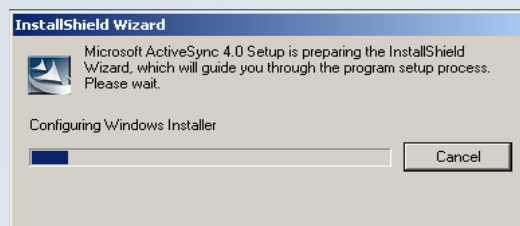
2.6 Connecting System with PC

ActiveSync program should be installed on PC prior to connect the system with PC via USB cable. Basically, ActiveSync 4.2 version is included in install CD, But if you want to install newest version s/w, you can download it from the Microsoft Website directly.

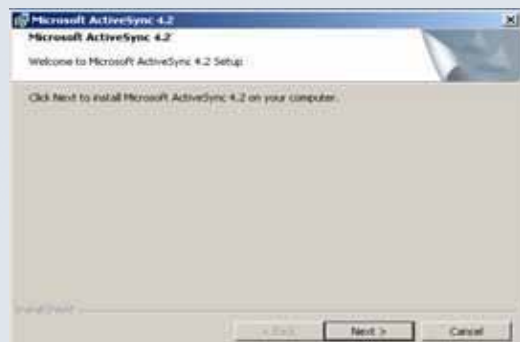
ActiveSync

Installing ActiveSync Program

Execute ActiveSync 4.2 “setup.exe” file included in install CD on your PC. The following screen is shown.



If right figure is shown,
Click [Next] button.



Select “I accept the terms in the
license agreement” and,
Click [Next] Button.





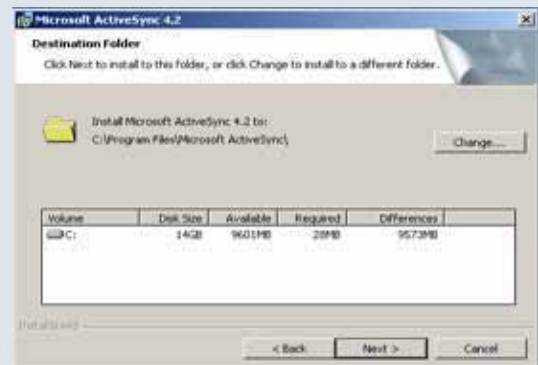
2. Before Using Device

2.6 Connecting System with PC

Input user information in text box as shown on right figure,
Click [Next] Button.



Choose desired path where you want to install ActiveSync program on. then,
Click [Next] button.



Click [Install] button on Right figure.
Then, it begin to install ActiveSync 4.2
program on PC.





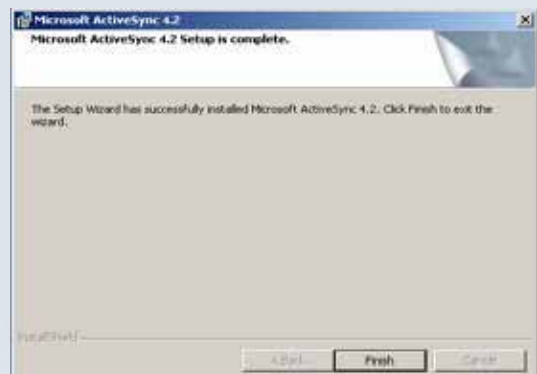
2. Before Using Device

2.6 Connecting System with PC

Right figure is shown while installing.



If it finish installation normally,
Click [finish] Button.



Then, it try to connect with the device
automatically as shown on right figure

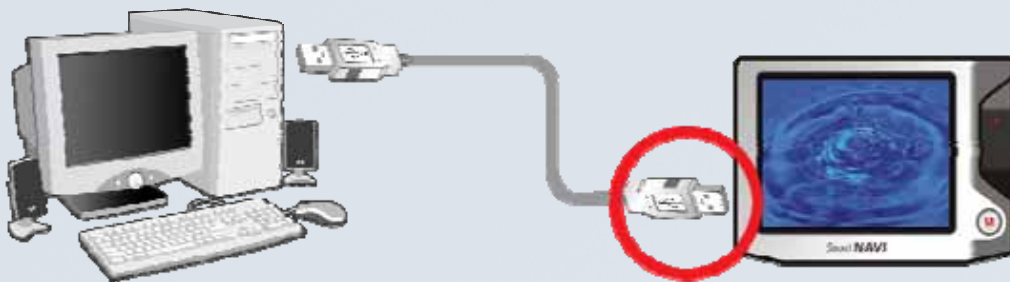


2. Before Using Device

2.6 Connecting System with PC

Connecting with PC via ActiveSync

After you install ActiveSync program on your PC, Connect the system with PC as shown below.



When the system is connected with PC, Right screen is shown on PC. Then, Select “No” item and Click [Next] button.

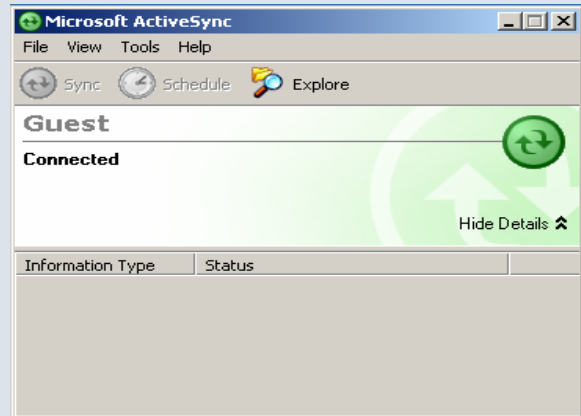


“Yes” item is for synchronization with PDA version s/w. it is not supported on this device.

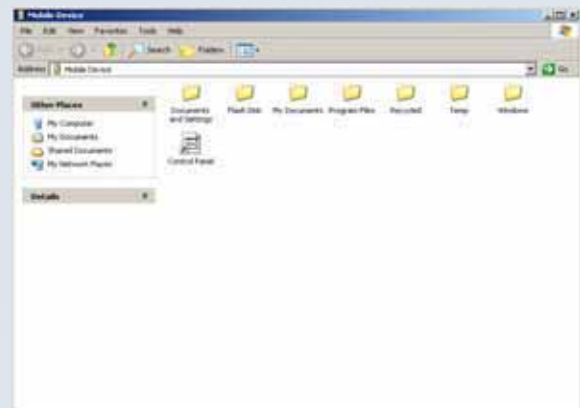
2. Before Using Device

2.6 Connecting System with PC

When the system is successfully connected with PC, right screen is shown



If you click [Explorer] button on top of the windows explorer, system folders and files are shown as shown right.



2. Before Using Device

2.7 Installing USB driver

Under Windows ME/2000/XP OS, USB driver is installed automatically from the device when the system is connected with PC for the first time. But in case PC OS in use is Windows98, you can install USB driver manually as following instruction.

Installing Windows98 driver

1. Insert the install CD provided with the product into the CD-ROM drive of PC.

2. Turn on the device and connect it with PC using USB cable. A new USB device is recognized and “**Device Driver Search**” appears.

Click [Next] button.

3. Following is displayed. Select “**Search for the best driver for your device**” Then

Click [Next] button.

4. Following is displayed. Then check at “**Specify a location**”. and

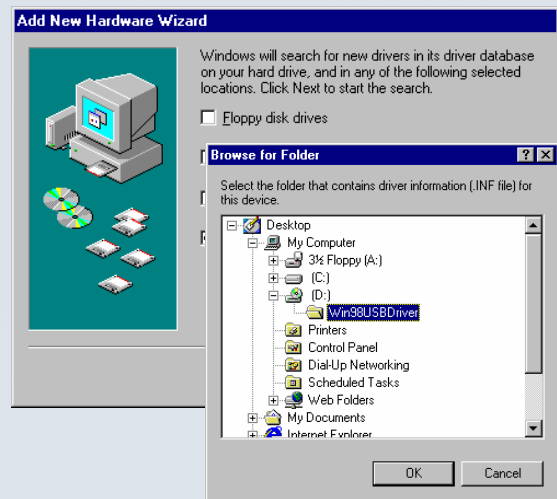
Click [**Browse**] button and choose the folder which contains USB driver.



2. Before Using Device

2.7 Installing USB Driver

5. Select “Win98 USB Driver” folder. Then Click [OK] button.



6. Click [Next] button. It will begin to install USB driver



7. If it finish installation normally, following is displayed. Then Click [Finish] button.



2. Before Using Device

2.7 Installing USB Driver.

If you fail to install USB driver on windows98, you can figure out the problem as following instruction.

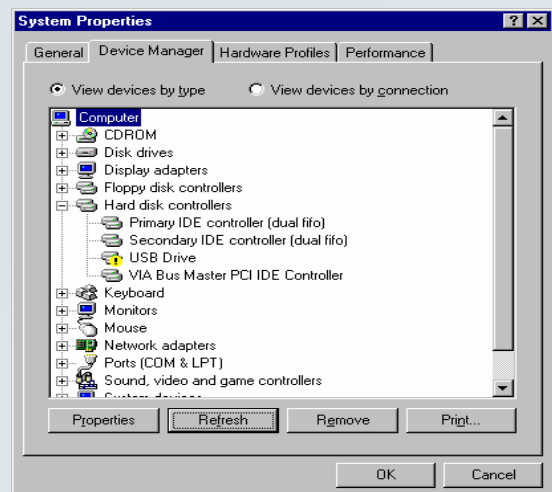
Manual installation

1. Turn on the device and connect it with PC using USB cable.

2. If you fail to install USB driver, the following is displayed when you choose [Control panel] -> [system] on the Windows background window and select the [Device Manger] tab.

If yellow item is shown like right figure, Remove it and click [Refresh] button.

3. "Device Driver Search" wizard appears. Then, Click [Next] button.



2. Before Using Device

2.7 Installing USB Driver with PC

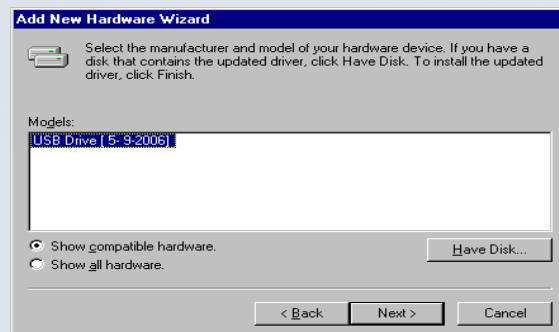
4. Following is displayed. Select “Display a list of all the drivers in a specific location, so you can select the driver you want” Then,

Click [Next] button.



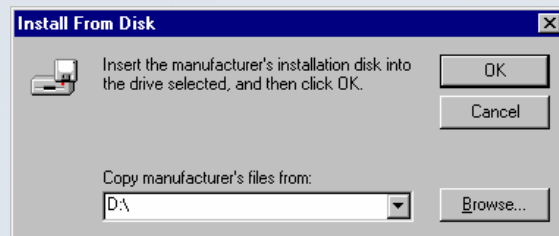
5. Following is displayed. Then,

Click [Have Disk] button.

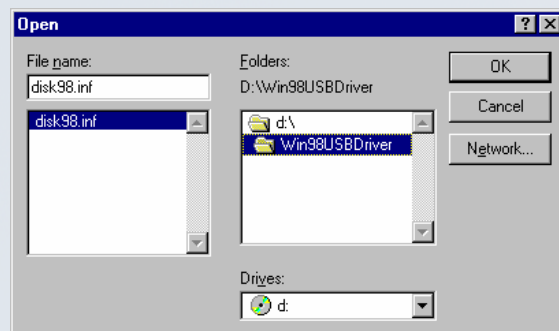


6. Following is displayed. Then,

Click [Browse] button and choose the folder which contains USB driver.



7. Select “Win98 USB driver” folder. Then, Click [OK] button.

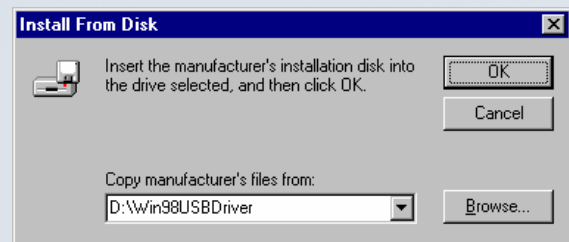


2. Before Using Device

2.7 Installing USB driver

8. Click [OK] button.

The name of CD-Rom drive can be different according to the PC environment of use.



9. Following is displayed. Then Click [Next] button. It will begin to install USB driver.



10. If it finish installation normally, following is displayed. Then, Click [Finish] button.



Using Supplementary Programs

Getting Ready	31
Menu Program	32
Opening Folder	33
Music Player	34
Name and Functions	
In-depth description of functions	
Search of Playing Position	
Functions of Control buttons	
Adjusting Volume and Silencing	
Storing Music File and Playing Music	
Displaying Playlist	
Movie Player	37
Names and Functions	
In-Depth Description of Functions	
Functions of Control buttons	
Adjusting Volume and Silencing	
Storing Movie File and Playing Movie	
Picture Viewer.....	41
Names and Functions	
In-Depth Description of Functions	
Functions of Control Buttons	
Storing Image file and Viewing Image	
Bluetooth HandsFree.....	44
Names and Functions	
In-Depth Description of Functions	
Functions of Control Buttons	
Pairing Mobile phone and Connecting	
Connecting and disconnecting with Mobile phone	
Automatic Connection to Mobile phone	
Dialing and Hanging up	
Answering	
Program information	

Using Supplementary Program

Setting Environments	56
Names and Functions	
In-Depth Description of Functions	
Functions of Control buttons	
Checking Battery Conditions	
Time Setting	
Adjusting Brightness of Backlight	
Language Setting	
Touch Screen Calibration	
USB Connection Setting	
System Information	
Upgrading Supplementary Programs	60