

User Manual

DOTN-430



Getting Started With Smart Navi

1. New batteries are shipped in a discharged condition and must be charged before use. We generally recommend approximately 30 minutes to charge.
2. To prevent the discharge of the battery, battery is electrically disconnected with the electric circuit before the shipment. Press '**Reset**' button to connect the battery and the circuit before your first use.
3. If you use our navigation device for the first time, or haven't used for more than 3 days, it takes approximately 5 minutes to 30 minutes to receive the GPS satellite signal. When it occurs, move your vehicle to wide open place to receive stable GPS signal.

Contents

- 1. Important Safety Instructions 3
- 2. Before using Smart Navi..... 6
 - 2.1. Smart Navi Components 6
 - 2.2. Components, Names and Function. 7
 - 2.3. Installation..... 9
 - Install in Vehicle
 - SD/MMC Memory Insertion
 - 2.4. Power Modes and Battery Recharge..... 11
 - Power Connection
 - Battery Recharging
 - Disconnect the Battery
 - 2.5. Booting and Setting.....14
 - System Reset
 - Setting
 - Volume Setting
 - 2.6. Connecting To PC..... 15
 - USB Expanded Memory Card
 - About Portable Disk
 - Copying Files
 - Safely Remove From PC
 - 2.7. USB Driver Installation.....24
 - Driver Installation in Windows 98
 - Trouble Shootings
- 3. Multimedia Programs..... 26
 - 3.1 Before starting Multimedia Programs..... 27
 - 3.2. Program Menu..... 27
 - 3.3. How to Open Folder..... 28
 - 3.4. Audio Player..... 29
 - Names and Functions
 - Functions
 - Search Slide Bar Function
 - Volume Setting and Mute Mode
 - Saving Audio Files and Playing
 - Display Play List
 - 3.5. Movie Player..... 32
 - Names And Functions
 - Functions
 - Control Icons
 - Volume Setting and Mute Mode

| | | |
|------|--|----|
| | Saving Video Files and Playing | |
| 3.6. | Picture Viewer..... | 36 |
| | Names and Functions | |
| | Functions | |
| | Control Icons | |
| | Saving Image Files and Playing | |
| 3.7. | Blue Tooth and Hands Free Cell Phone..... | 39 |
| | Names and Functions | |
| | Functions | |
| | Control Icons | |
| | Register and Connect to Cell Phone | |
| | Disconnect to Cell Phone | |
| | Automatic Connection to Cell Phone | |
| | Send and End Function | |
| | Receiving Calls | |
| | To See Blue Tooth Program Information | |
| 3.8. | System Setting..... | 53 |
| | Names and Functions | |
| | Functions | |
| | Control Buttons | |
| | To See Battery State | |
| | Time Setting | |
| | Back Light Brightness | |
| | Language Selection | |
| | To Set Touch Screen | |
| | USB Connection Setting | |
| | System Information | |
| 3.9 | Install Additional Programs and Upgrade Version. | 55 |
| 4. | Etc..... | 56 |
| 4.1 | Trouble Shootings | 57 |
| 4.2 | System Specification..... | 58 |
| 4.3 | Certificate of Warranty..... | 59 |

1. Important Safety Instructions

Do not operate navigation device while you are driving. Stop your vehicle and operate.

Search and set your destination before you drive your vehicle.

Do not look at the map on the navigation while your vehicle is moving.

Sound guiding and maps on the screen may not match to real roads situation. Beware of traffic situations and pedestrians, and observe traffic signals.

Do not use navigation device as neither measuring the speed nor measuring the distances. Only use as a navigation.

GPS signal's reception is depends on your location. Reception will be poor in tunnels, under the high-level roads and buildings, and a bad weather condition.

GPS signal interrupts if,

- when front windshield of your vehicle is coated with metal elements
- there is electric devices in your vehicle which can interrupt the GPS signal
- when your are moving while having poor GPS signal

Do not place your navigation device where covers your vision.

Do not place your navigation device where obstructs your Air-Bag.

Wipe the surface of the glass and the suction surface before you install your navigation. Suction mount may fall because of wrong attachment of suction pad. Any damages of your navigation or your vehicle because of the wrong attachment, are on your responsibly.

Keep out of direct sunlight for long time and keep out of engine heat from the vehicle.

Do not leave your navigation device when temperature is high.

Battery may explodes when heated.

Keep out of humidity, heats, and a sudden rise and fall in temperature.

Dry completely before you use when exposed to humid.

Do not disassemble the navigation device. We are not responsible for troubles because of disassembling.

Keep out of impacts and do not destroy navigation device.

Keep away from fires or flammable gases.

Navigation includes Lithium Ion battery which can explode or leak dangerous liquids.

Do not operate A/C,D/C adaptor with wet hand. This can cause dangerous electric shocks. Do not wrap navigation device in paper, vinyl or fabric. It may get heated by its own heat.

Do not operate the 'Touch Screen' with sharp object such as Pencil.

Do not wipe the 'Touch Screen' when power is on.

Wipe with soft cloth to avoid scratches on the screen.

Do not use any kind of chemical substances or detergents to clean your navigation device.

Do not insert foreign substances into the memory slot to avoid SD card and MMC card slots.

Make sure the slot is empty and clean before insert memory cards.

Contents

| | |
|-----------------------------------|----|
| Smart Navi Components..... | 6 |
| Names and Functions..... | 7 |
| Installation..... | 9 |
| Install in Vehicle | |
| SD/MMC Insertion | |
| Power and Battery Recharge..... | 11 |
| Power Connection | |
| Battery Recharging | |
| Removing Battery | |
| Booting and Setting..... | 12 |
| System Reset | |
| Setting | |
| Volume Setting | |
| Connecting to PC..... | 15 |
| USB Memory Card | |
| About Portable Disk | |
| Copying Files | |
| Safely Remove from PC | |
| USB Driver Installation..... | 19 |
| Driver Installation in Windows 98 | |
| Trouble Shooting | |

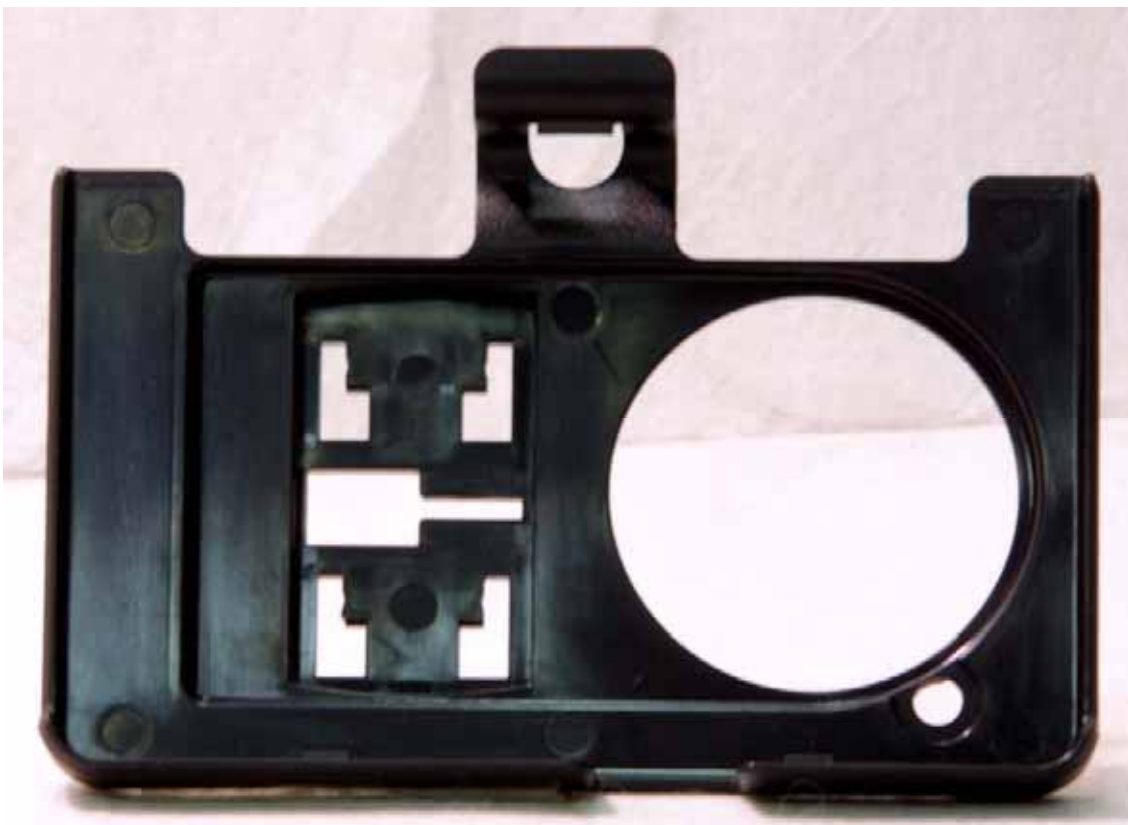
2. Before Using Smart Navi

2.1 Smart Navi Components

Standard Components



<DOTN-430 Device>



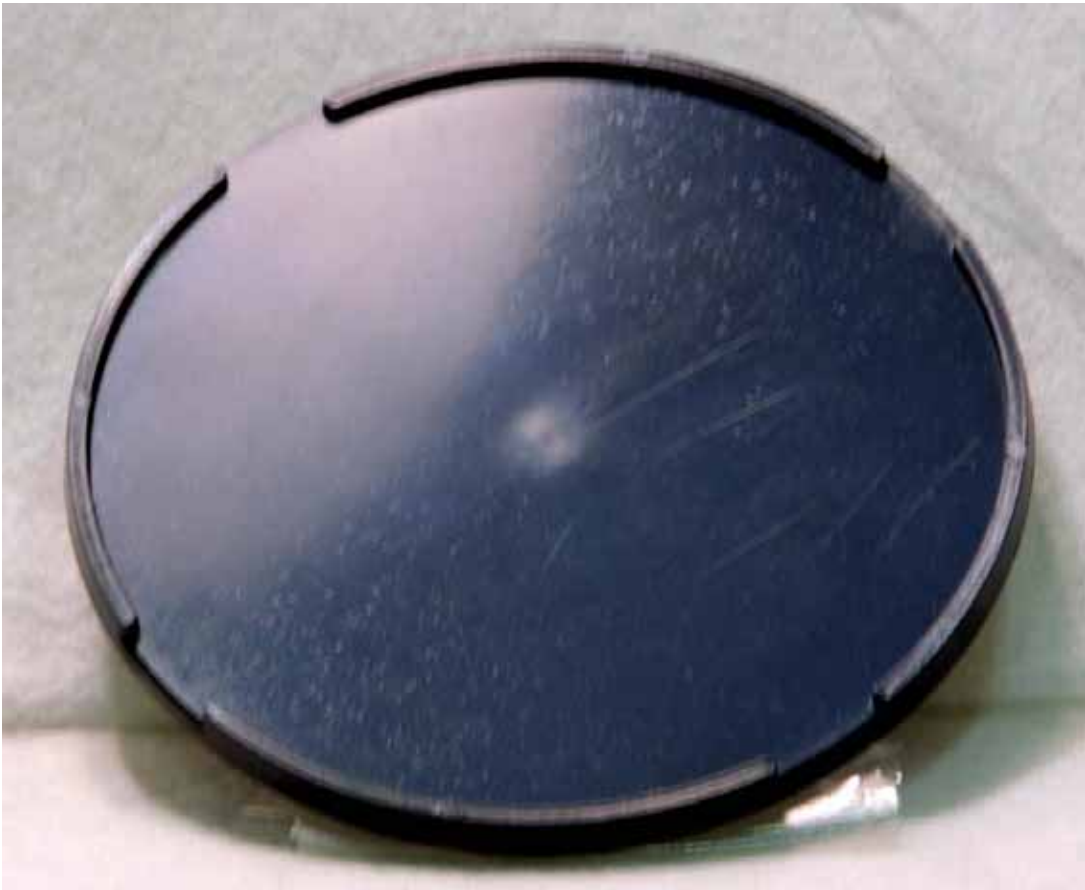
<Mounting

Holder>



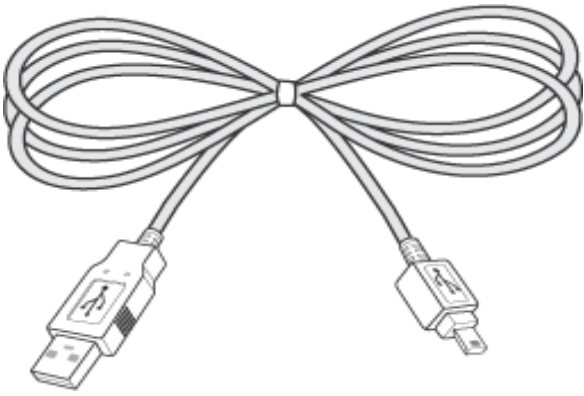
<Suction

Mount>



<Mounting

Disk>



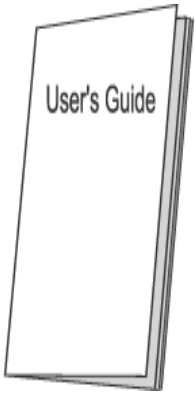
<USB Cable>



<Cigar Power Cable>



<User's Guide CD>



<User's Guide>

Optional Components



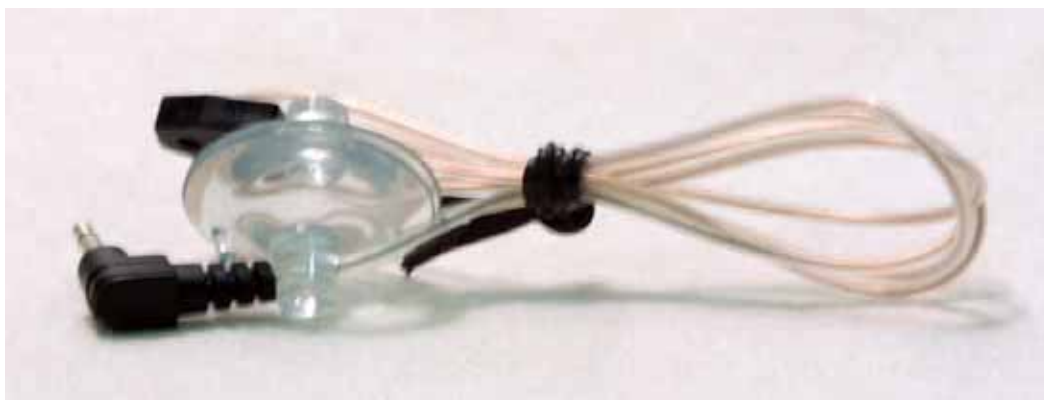
<AC/DC Adaptor>



<SD Memory Card>



<TMC Receiver>



<TMC FM Antenna>



<Microphon

e>

2.2 Names and Functions

FRONT



BACK



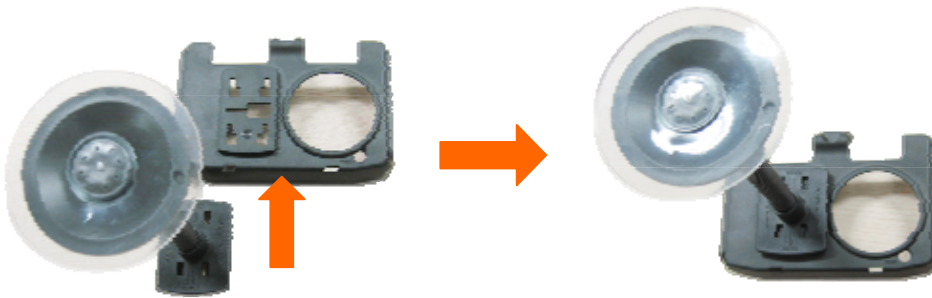
Names and Functions

| Names | Functions |
|--------------------------|--|
| GPS Antenna | Receives Data from GPS Satellite. |
| SD/MMC Memory Slot | Slot for SD/MMC Memory card. Insert your memory card and push slightly to mount the memory card. Push the memory card to remove from the slot. Beware of memory card's direction and do not insert any foreign substances into the memory slot. |
| Earphone input | Earphone input |
| Speaker | Sound Speaker |
| Power Port | AC/DC Power connection to cigar jack |
| USB Port | USB Connection to the PC |
| Volume Scroll Button | Volume up or down by scrolling the button (see "2.5 Booting and settings / Volume setting") |
| Brightness Scroll Button | Light Up or Down(화면을 밝거나 어둡게 하는 스크롤 버튼입니다) |
| Menu button | Press Menu Button to activate menu mode. |
| Power Button | Press to activate "Power Saving Mode". Press once again to go back to "Operation Mode" (see "2.4. Power Mode and Recharging battery") |
| Reset Button | Restart the system (see "2.5. Booting and settings/ System Reset") |

2.3 Installation

Install in Vehicle

1. Connect holder and mount as the following picture. Make sure the "Close" sign on mount is facing up, then insert into the holder.

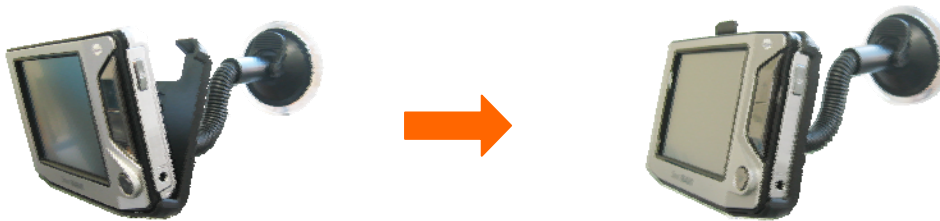


2. Wipe your suction pad and the glass before you attach them. Adjust the lever to lock.




<Attach to the glass and adjust the lever to lock >

3. Clip your navigations as the following picture. Make sure the navigation exactly fitted in a holder.



4. Connect the Power to the Cigar Jack.



 Do not place your navigation device where covers your vision, and make sure not to interrupt your driving.

SD/MMC Memory Card Insertion

Insert your SD/MMC memory card in to the slot as the following picture.



Do not try to insert in wrong direction due to damage of the memory slot.

Navigation doesn't support "SDHC Memory Card". Use only SD/MMC memory card.

2.4 Power Modes and Recharging Battery

Power Modes

| Power Modes | Battery States |
|-----------------------|--|
| AC/DC Power Mode | Powered by AC/DC adapter or Cigar Jack. Yellow LED on “Power Button Icon” is turned on when the AC/DC power is connected. (see "3.8. Setting and battery state") |
| Battery Mode | Yellow LED is on : Battery remains more than 60%. 60%이하일 때는 Yellow LED가 깜빡입니다.(see "3.8. Settings/Battery State") 30%정도일 때는 Red LED가 깜빡입니다. |
| Saving Mode | Press [Power Button] to activate ‘Power Saving Mode’. Press once again to return to ‘Operation Mode’. |
| Compulsory Power Mode | Warning Sign Appears when battery power remains less than 10%. Recharge your battery when the warning sign appears. System automatically activates ‘Compulsory Power Mode’ when battery remains nearly empty. |



battery remaining can be differed in battery mode depends on user's circumstances.

It may not be returned to operation mode even you push on/off in ‘Compulsory Power Mode’.

In this case, you have to connect to AC/DC adapter or cigar jack to return to ‘Operation Mode’.

Battery Recharging

You can recharge your battery with A/C, D/C Adaptor, or the cigar jack from your vehicle.

Full recharging takes more than 3 hours from "Compulsory Power Mode".

(While using navigation in default. see "2.5. Booting and Setting".)

Fully recharged battery lasts 2 hours on navigation mode.

(when using navigation in default. see "2.5. Booting and Setting".)

Disconnect the Battery

When you are not using battery, press the [Reset Button] for 3 seconds.

It will disconnect your battery and electric circuit to prevent the discharge of the battery.



1. Press [Reset Button] for 3 seconds.
2. Make sure the screen is off.
3. Then release the button



Press [Reset Button] to restart the system when system is down.

2.5 Booting and Settings.

System Reset

You have to press [Reset Button] if you use the navigation device for the first time. Battery is electrically disconnected with electric circuit before the shipment to prevent the discharge of the battery. Press the [Reset Button] to connect the battery to boot the system.

The battery disconnects with electric circuit when battery is fully discharged. Press the reset button to boot the system when this happens.

You also can reboot your system by pressing the reset button, when the system crashes.



Press the [Reset Button] to restart your system.



When the system error occurs and not working, “Disconnect the battery”, then reset the system. (see “2.4 Disconnect battery”)

The following pictures appear when you reset your system. It will automatically activate navigation program if you don't select other features on main menu for 5 seconds.



Volume setting

<430 그림 삽입> 내용 전면 수정

“- Press the “Volume Up” or “Down” Buttons to adjust level of the sound

- Volume State Icon appears when you press ‘Volume Buttons’. Adjust your volumes by clicking ‘Volumes Buttons’.

- You can set your volume 0 to 10. Volume State Icon disappears 2 seconds later from the setting.



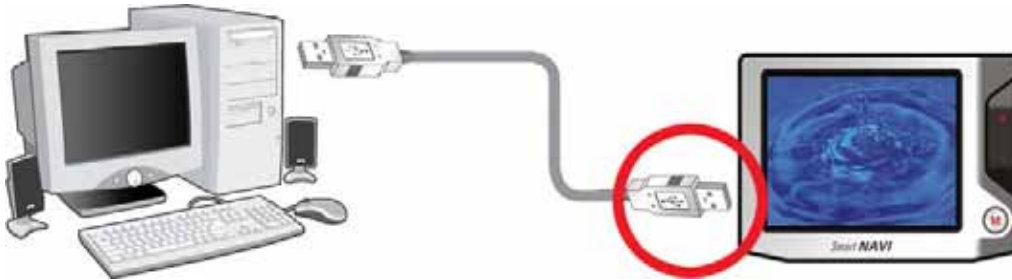
You can separately adjust your volumes for Music Player, Movie Player, Bluetooth in options.

2.6 Connect to PC

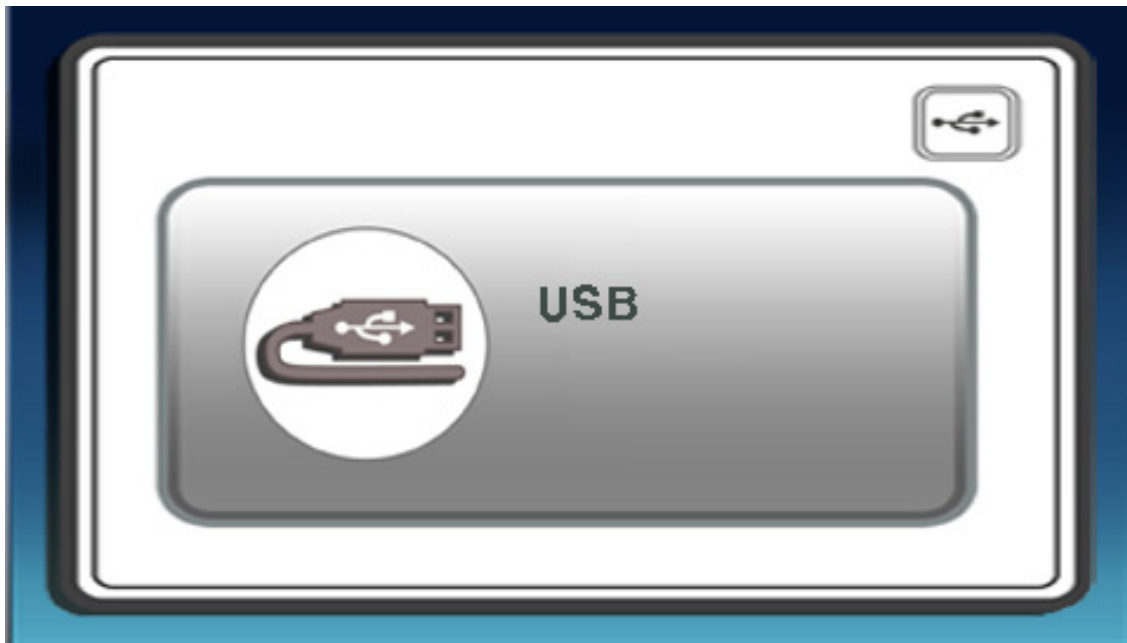
Connect the USB Cable to PC to copy map data, music files, movie files, or pictures to SD/MMC memory cards. Device is allocated as “USB Memory Card” at PC side and you can simply access files in Windows Explorer of PC

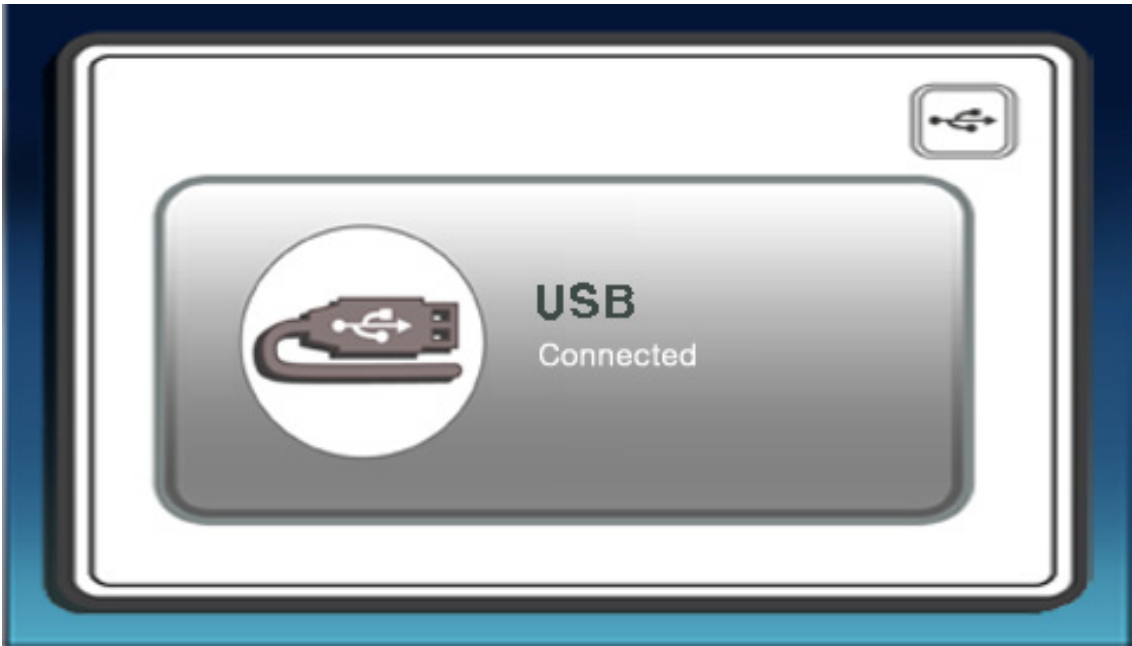
USB Memory

By connecting USB cable to PC provides you to move your files to pc to SD/MMC Memory cards or built-in memory in navigation device.



The following screen displays the condition of the connection.

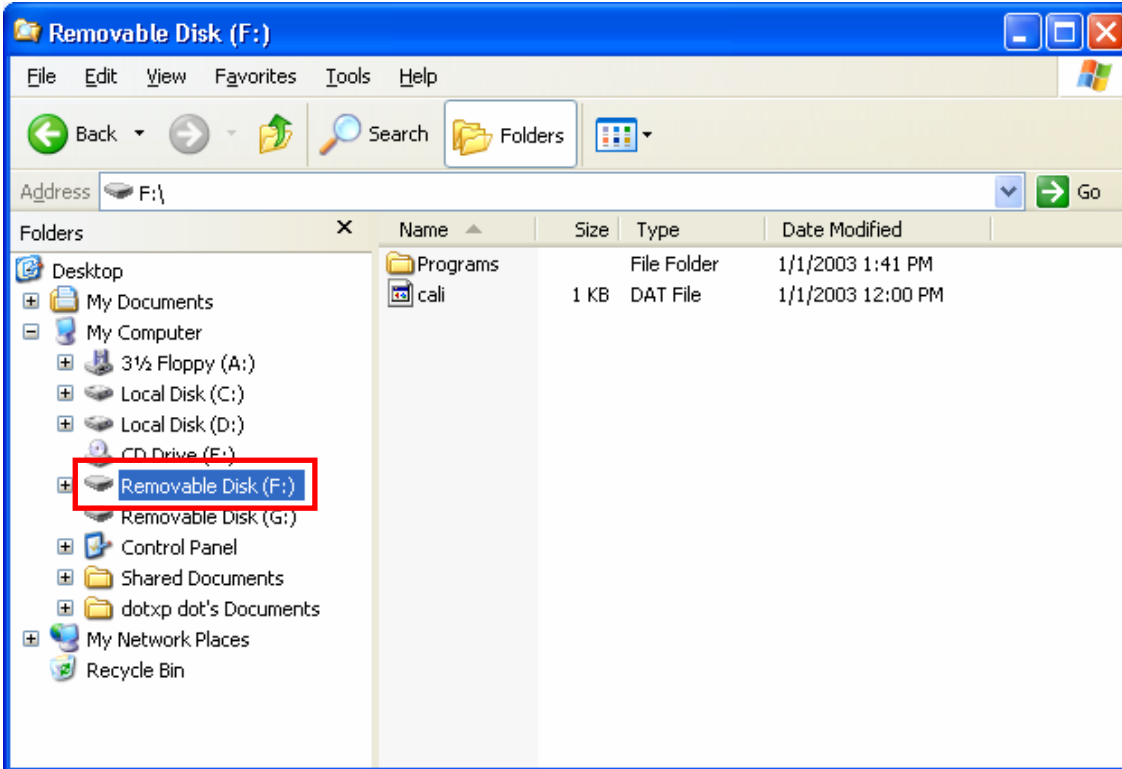




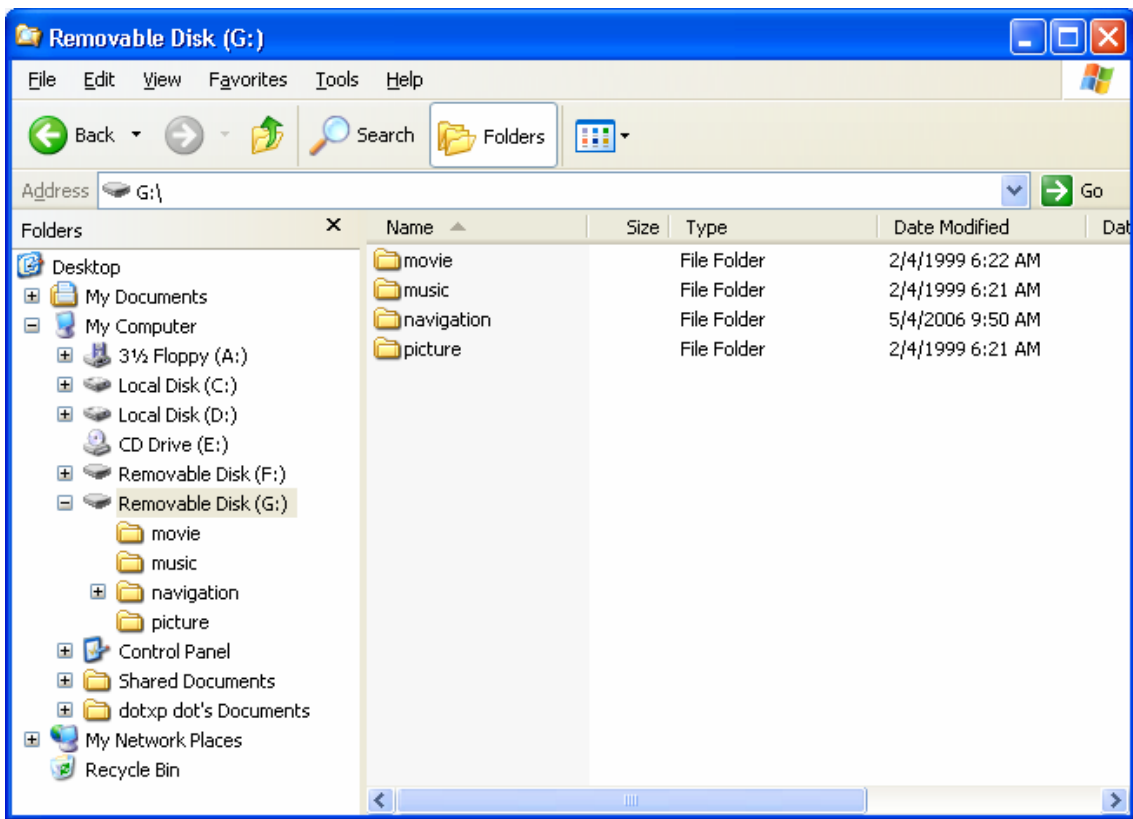
About Portable Disk

After you connect to PC, two portable disk driver will appear on your windows explorer. SD/MMC Memory Card Drives on (G:) and Built-in Flash Memory on (F:).

(F:) Drive shows Menu and Programs that saved in your built-in flash memory.



(G:) Drive Shows Map data and additional programs that saved in your SD/MMC memory.



Names of Drive(F:, G:) can be differed depends on your PC circumstance.

Copying Files

You can move, copy and delete your files in 'Windows Explorer', but you can not operate touch screen, buttons, and GPS while you are connected to PC.

Navigation System will automatically restart when you remove your USB Cable.



Do not Save Music, Picture, and Movie files in "Built-in flash memory".



Do not delete default files in 'built-in flash memory'. System errors can occur.



Do not remove your USB cable or SD/MMC memory while your are operating. Please safely remove your memory card as described in section "2.6 Connect to PC/Safely remove from PC"



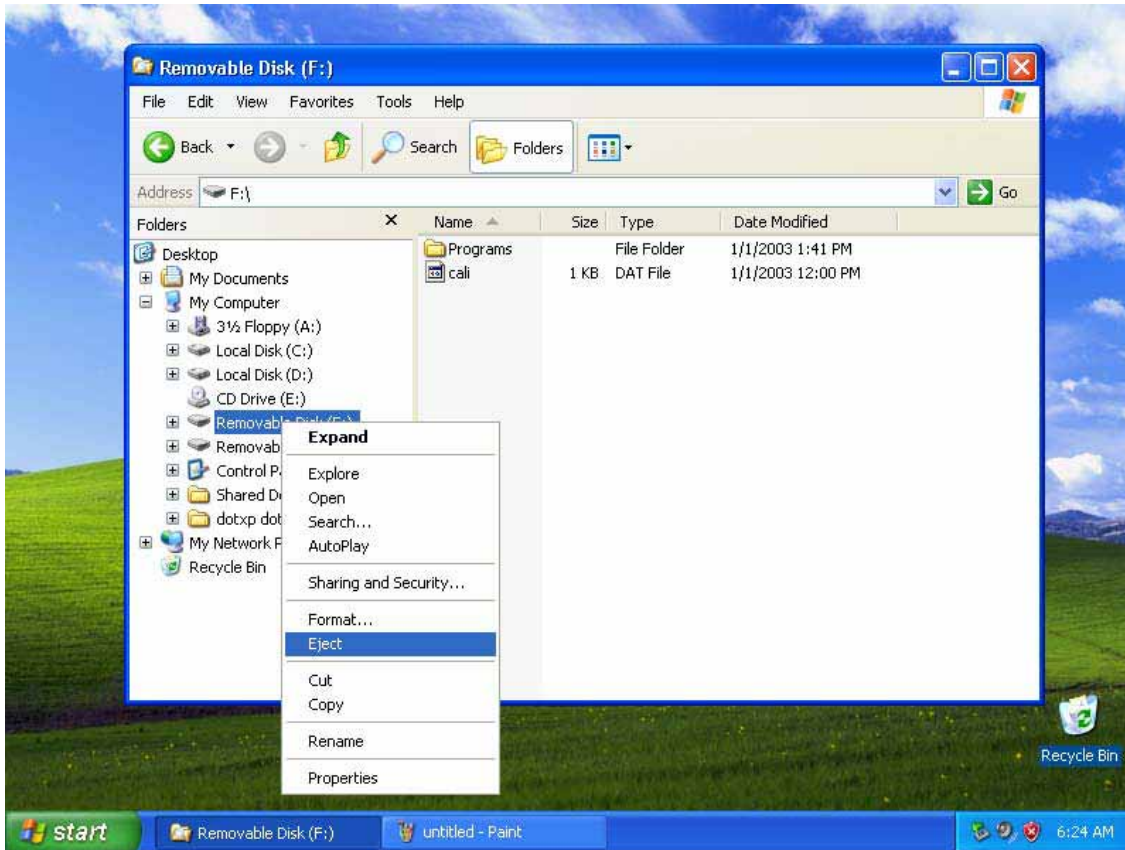
Since SD/MMC memory card also saves map log data, please **always keep 2Megabites** empty.

Safely Remove from PC

For Window XP Users

Click your right mouse button on “Portable Disk Driver” and select ‘Reject’.

You can also remove your SD/MMC memory by clicking your right mouse button and select ‘Reject’.



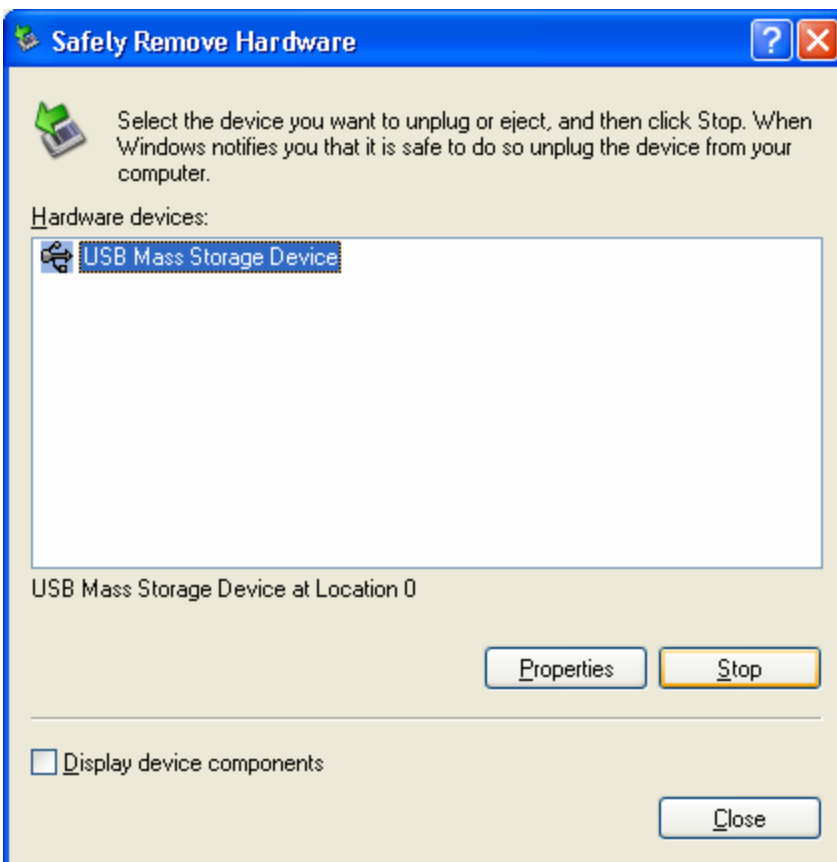
For Windows 98/SE/ME/2000/XP Users

Double click on the tray icon on windows bar and select “Safely Remove Hardware” as the following picture shows.



Safety remove hardware dialog appears after you double-click on the tray icon.

Select “USB mass storage device” and click “STOP”.



Select the drive you want to remove and click “OK”.



2.7 USB Driver Installation

For Windows ME/2000/XP users, the PC will automatically install USB Driver.

For Windows 98 users, follow the following instruction.

Driver Setting for Windows98 Users

1. Insert the CD-ROM that provided with your navigation device.

2. Turn on your navigation and connect to your PC by USB Cable. Then following dialog will appear.

Press [NEXT]



3. Select “Search for the best driver for your device”, then press [NEXT]



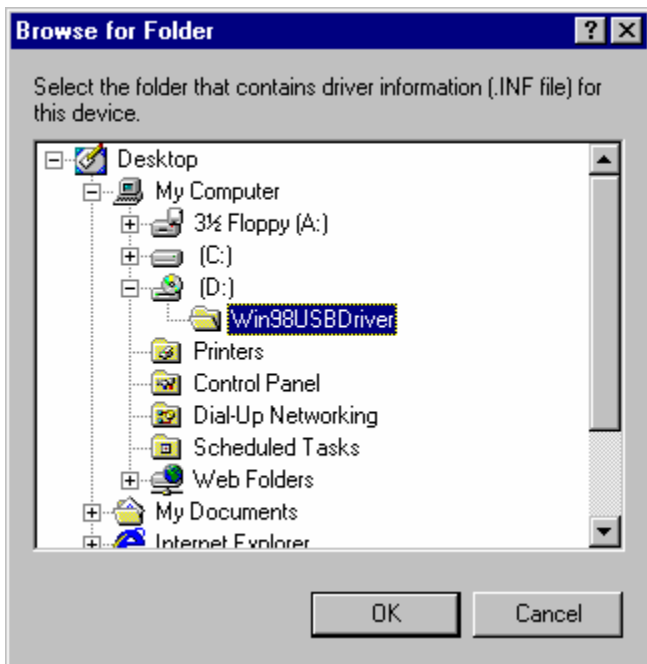
4. Select “Specify a location”, then

press [Browse]

(CD-ROM Driver's name can be differed depends on your PC.)



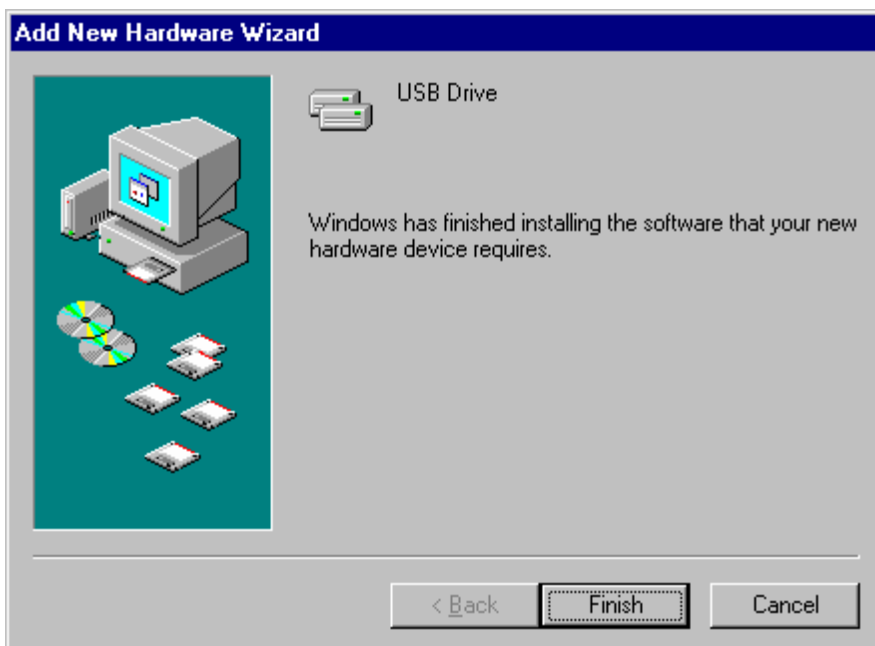
5. Select "WIN98USBDRIVER", then Press [OK]



6. USB Drive installs by pressing [NEXT]



7. Press [FINISH] to end your installation.

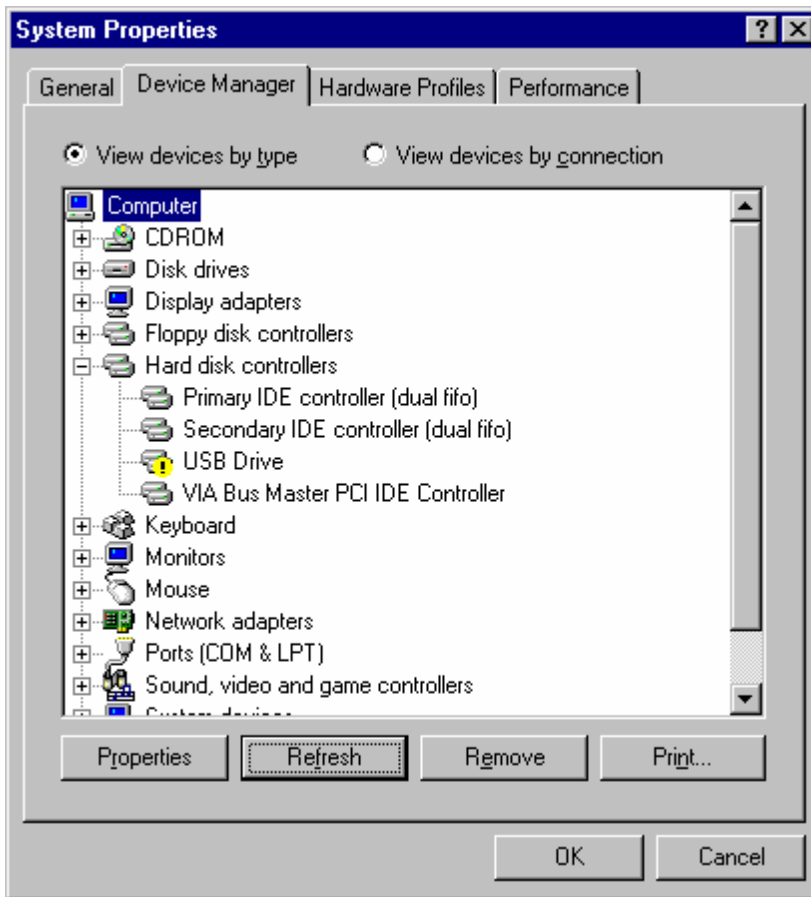


For Windows ME/2000/XP users, the PC will automatically install USB Driver.

Trouble Shooting

1. You can also install your USB Driver manually, when 'Auto Installation' fails.

2. Go to [System Properties] -> [Device Manager] , deselect the yellow icon, then press [Refresh].



3. Then "Add New Hardware Wizard" dialog appears.

Press [NEXT]



4. Select “Display a list of all the drivers in a specific locations, so you can select the driver you want”

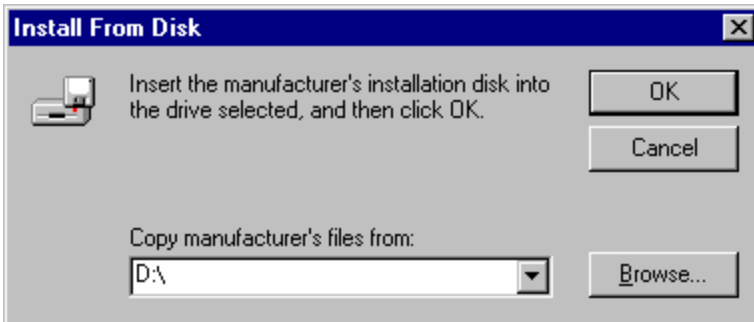
Then Press [NEXT]



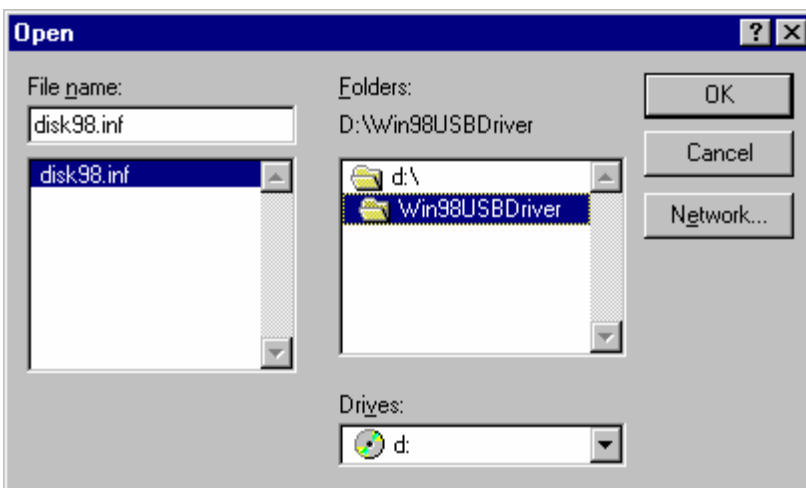
5. Press [Have Disk]



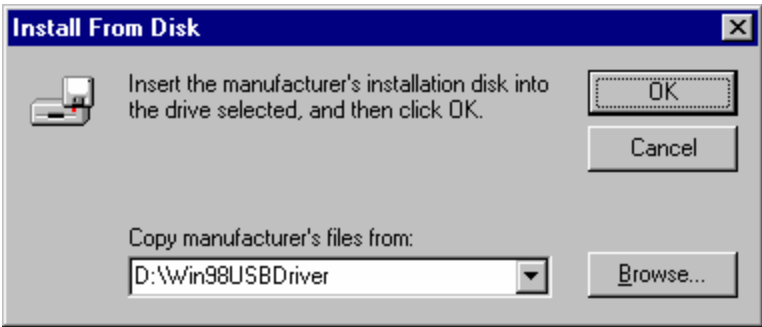
6. Press [Browse] and select the path.



7. Select your path and press [OK].



8. Check your directory path and Press [OK].



9. USB Driver will start to install by pressing [NEXT].



10. Press [FINISH] to finish your installation.



Multimedia Programs

| | |
|--|----|
| Before you start..... | 26 |
| Before you start..... | 26 |
| Menu Program..... | 27 |
| How to Open Folders..... | 28 |
| Music Player..... | 29 |
| Names and Functions | |
| Functions | |
| Slide Bar Search Function | |
| Control Icons | |
| Volume Setting and Mute Mode | |
| Saving Music Files and Playing | |
| Display the Play List | |
| Movie Player..... | 32 |
| Names and Functions | |
| Functions | |
| Control Icons | |
| Volume Setting and Mute Mode | |
| Saving Movie Files and Playing | |
| Picture Viewer..... | 36 |
| Names and Functions | |
| Functions | |
| Control Icons | |
| Saving Image Files and See | |
| Bluetooth hands free..... | 39 |
| Names and Functions | |
| Functions | |
| Control Icons | |
| Register and Connect to Cell Phone | |
| Disconnect to Cell Phone | |
| Automatic Connection to Cell Phone | |
| Send and End Functions | |
| Receiving Calls | |
| To See the Bluetooth Program Information | |
| System settings..... | 51 |
| Names and Functions | |
| Functions | |
| Control Icons | |
| To See Battery State | |
| Time Setting | |

Backlight Brightness

Language Selection

Adjust the Touch Screen

USB Connection Settings

System Information

3. Multimedia Programs

3.1 Before You Start Smart Navi

Saving Files

You can save music, movie, and picture files in SD/MMC memory cards. (see “2.6. Connect to the PC/copy files”).

It is highly recommended not to copy those files in “Built-in flash memory”.

Play Music files

You can play MP3, WAV, and WMA files by using Music player.

MP3 and OGG files that encoded by “Variable Bit Rate” are can be played by using “Movie Player.” (see 3.5. “Movie Player.”)

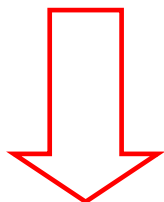
3.2 Program Menu

1. The following menu appears when you start your system. It will automatically activate navigation program if you don't select other features on main menu for 5 seconds.



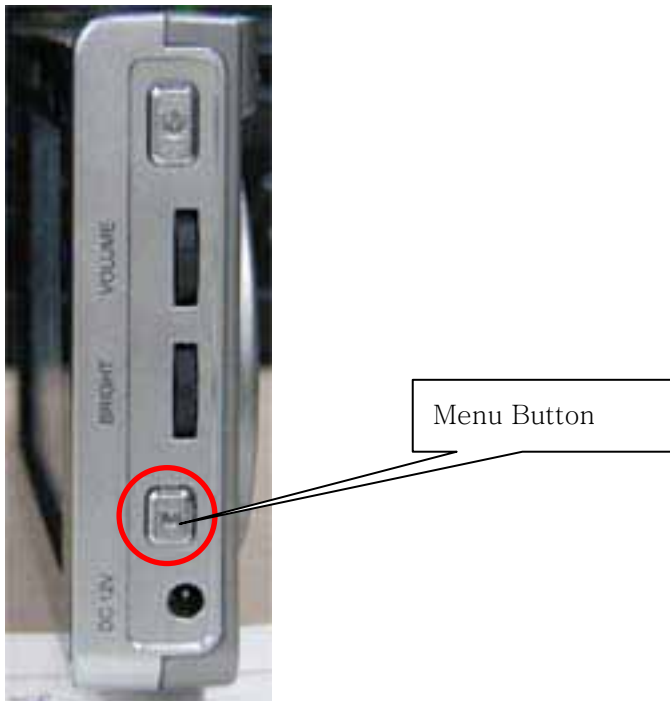
2. Press the icon that you want to activate.

(Following example is when you select the music player.)





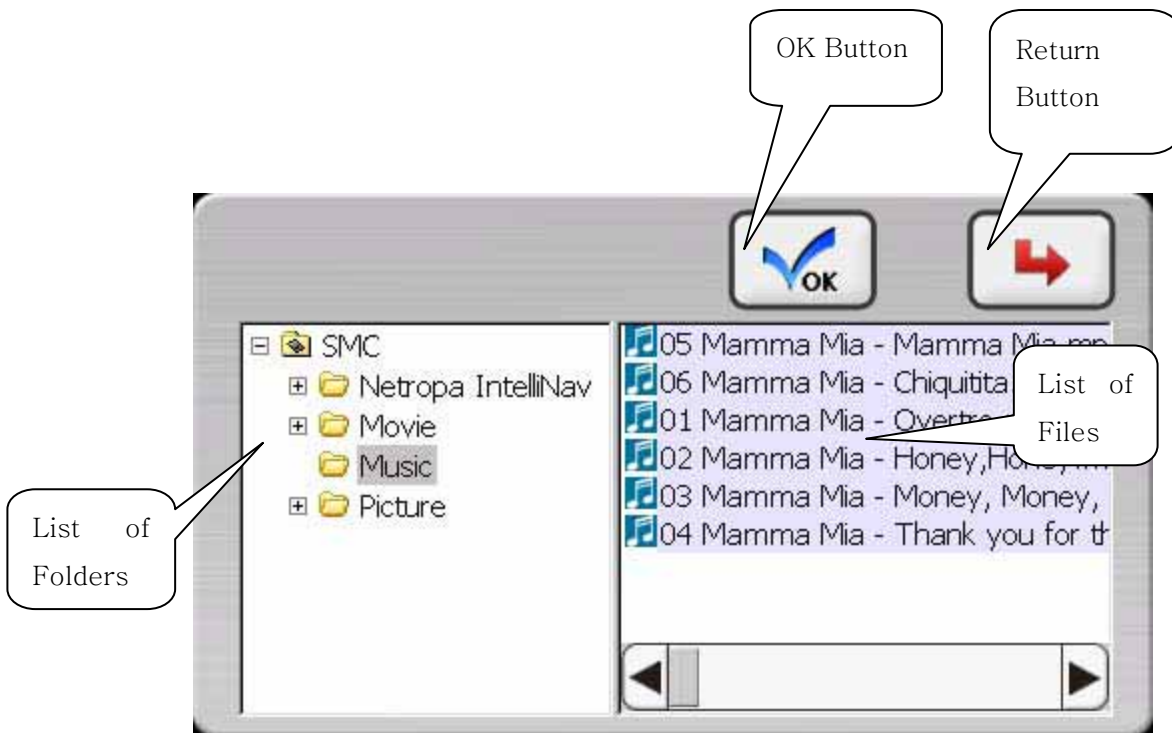
3. You can bring your menu by pressing [Menu Button]





3.3 How to Open Folders

You will see [Folder Explorer] when you press your [Folder Button] while you are using your “Movie Player”, “Music Player”, and “Picture Viewer”.

You can see lists of saved files in SD/MMC memory card.

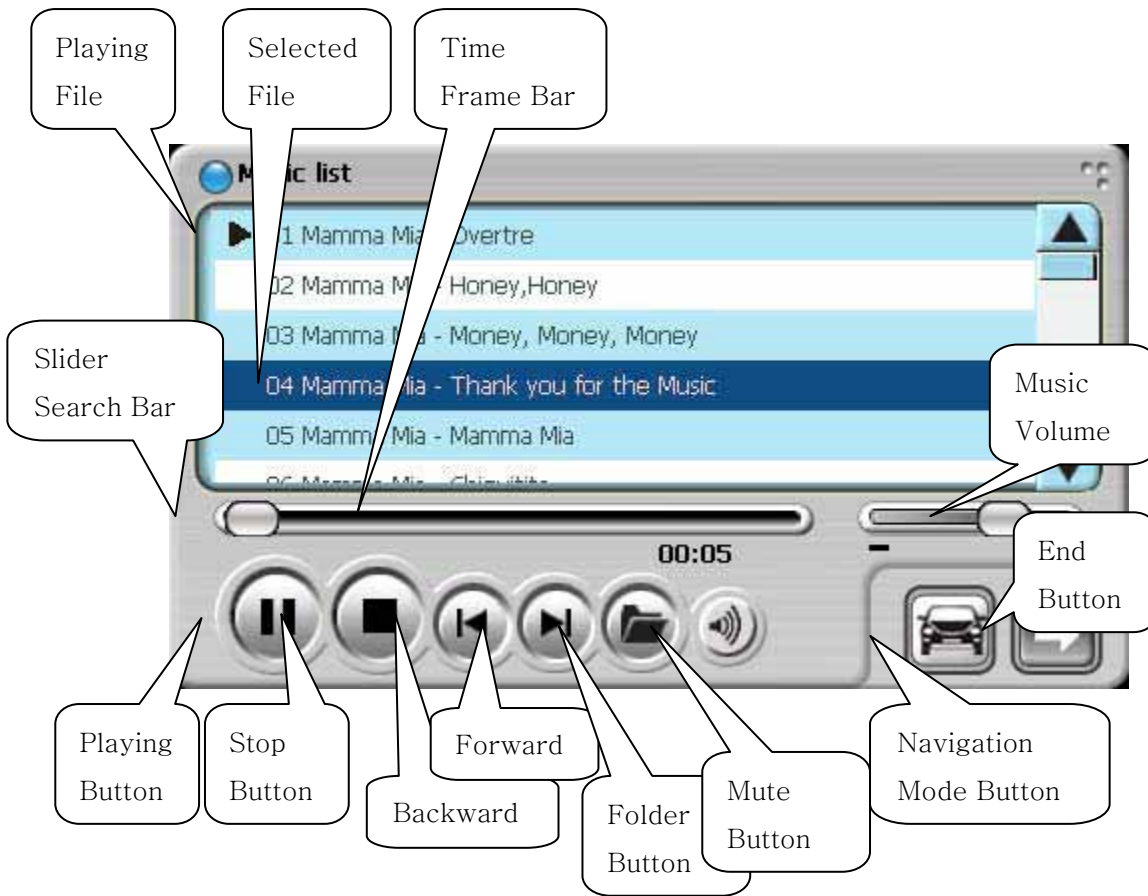


| Icons | Names | Functions |
|---|---------------|--|
|  | OK Button | Select files and press ok to move selected files to the [Play list]. |
|  | Return Button | Return to [Play list] without any savings. |

3.4 Music Player

Music player supports mp3, wma, wav files. Some MP3 files can not be played in music player.

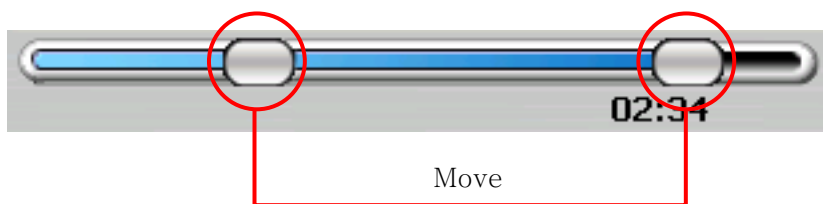
Names and Functions










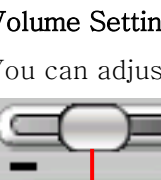
Functions

Slider Search Bar

You can move the play time by moving the slider search bar.

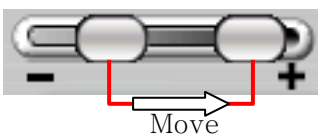


Control Buttons and Functions

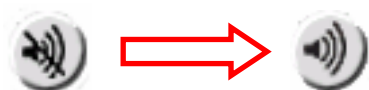
| Icons | Names | Functions |
|---|-------------------|--|
|  | Play Button | Play the music in the play list |
|  | Stop Button | Stop play |
|  | Pause Button | Pause music Press once again to play |
|  | Forward Button | Play next music on your play list. |
|  | Backward Button | Play previous music on your play list |
|  | Folder Button | Open your SD/MMC Memory Folder (see “3.3. How to Open Folders”). |
|  | End Button | Press to finish ‘Music Player’ and go back to Menu |
|  | Navigation button | Activates ‘Navigation Mode’ |

Volume Settings and Mute

You can adjust your volume by simply moving your [Volume Slide Bar]



You can mute the sound by clicking [Mute Button].



How to Save Music Files and Play

Connect your Device to the PC (see 2.9. Connect to the PC), and copy your files into “SD/MMC Memory”. (see 2.10 Copy files)

This Triangle(▶) Icon indicates the music that playing now.



Display the Music list

Double click on the music that you want to play in [Music List].



Press [Stop Button] to stop the current song. Then open the [Music List] and select the music you want to play.

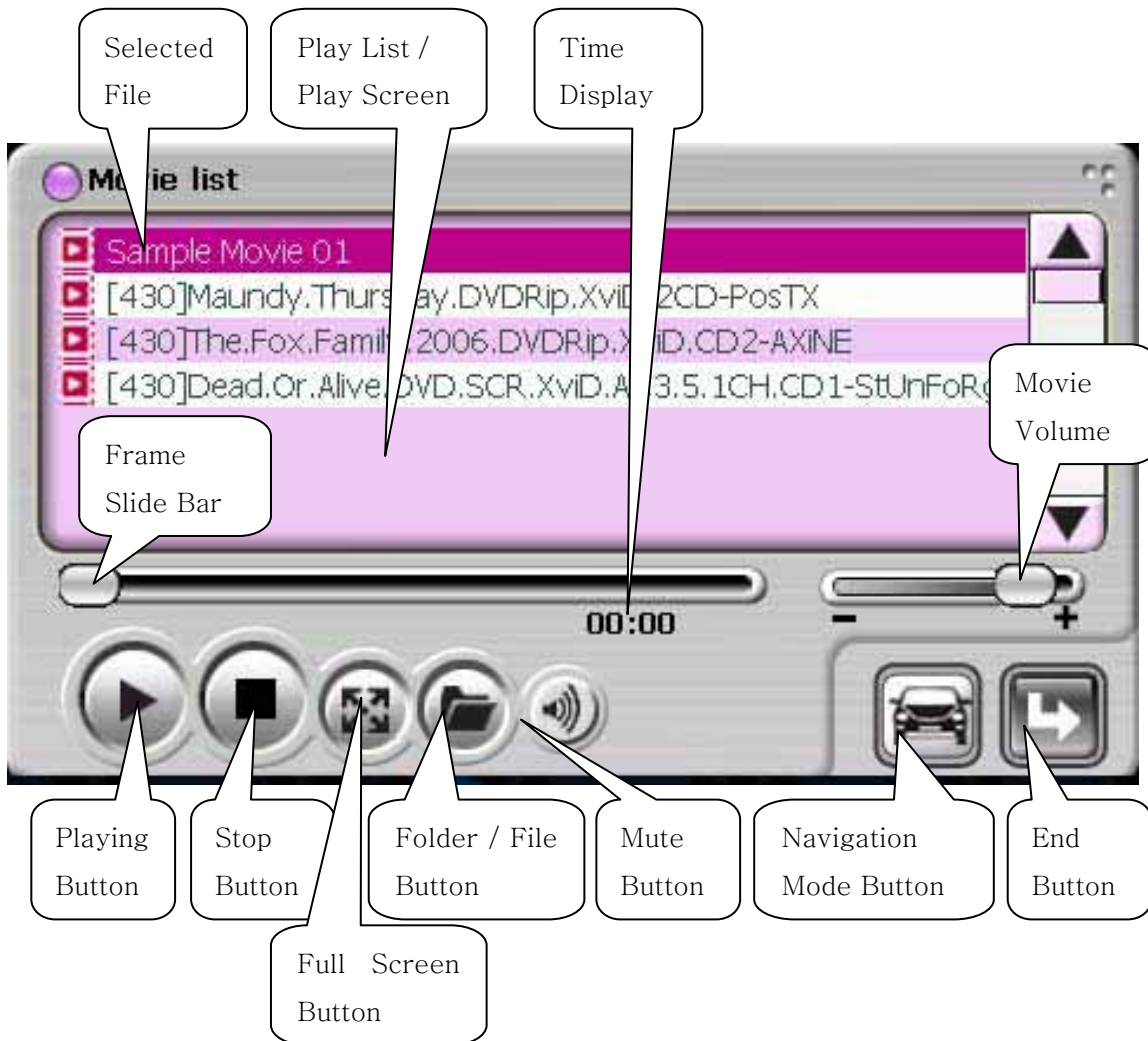
The following picture appears when the selected music file doesn't exist in your folder.



3.5 Movie Player

Movie Player supports mp4, wmv, avi, divx files, and some MP3 and OGG files which could not be played in 'Music Player'.

Names and Functions



Functions

Frame Slide Bar

[Frame Slide Bar] Shows the frame of the movie that you are watching, and you can move your play time.

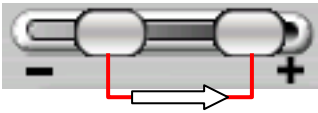


Control Buttons and Functions

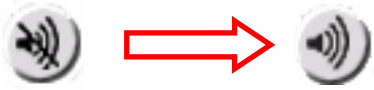
| Icons | Names | Functions |
|-------|-------------------------|--|
| | Play Button | Press to play |
| | Stop Button | Press to stop |
| | Pause Button | Press to pause |
| | File Button | Turns to [Play List] from the [Play Screen] |
| | Folder Button | Open your SD/MMC Memory Folder (see “3.3. How to Open Folders”). |
| | Full Screen Mode Button | Full Screen Mode |
| | End Button | Finishes the ‘Movie Player’ and go back to Menu. |
| | Navigation Button | Activates ‘Navigation Mode’ |

Volume Setting and Mute

[Volume Setting Slide bar] Shows the current volume set and you can set your volume by moving slide bar.



You can mute your sound by pressing [Mute Button].



How to Save Movie Files and Watch Movie

Connect your navigation device to the PC and copy your files into your “SD/MMC”.

Press [File Button] as the following picture, then you can see the list of movie files in your selected folder.



File Button



Movie List Display

Folder Button

Select the movie that you want to play and select [Play Button] or double click on the list to play the movie that you want to play.



The Movie will pause when you press [File Button]. [File Button] icon will change to [Folder Button] icon, when you press [File Button].

The movie file will play from the beginning when you press [Play Button].

Press the movie screen or [Full Screen Button] to maximize the screen. Press the movie screen to minimize the screen.

The following picture will appear if the selected movie file doesn't exist in your folder.



Do not use navigation function and movie player at same time. Errors can occur due to lack of the memory.

Movie player pauses when you operate other programs.

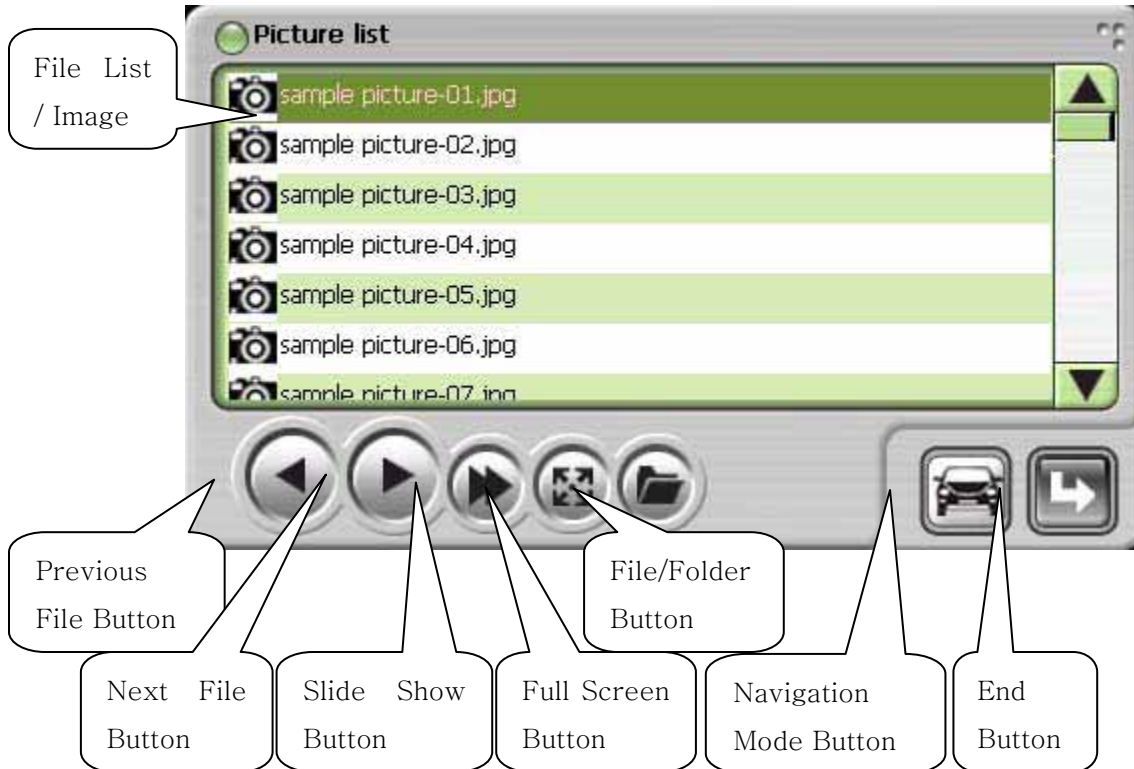
Files in same folder will play in order on the play list.

3.6 Picture Viewer

Smart Navi supports JPG, BMP files only.








The recommended picture size is 320x240, 16bit color.

Names and Functions



Functions

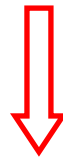
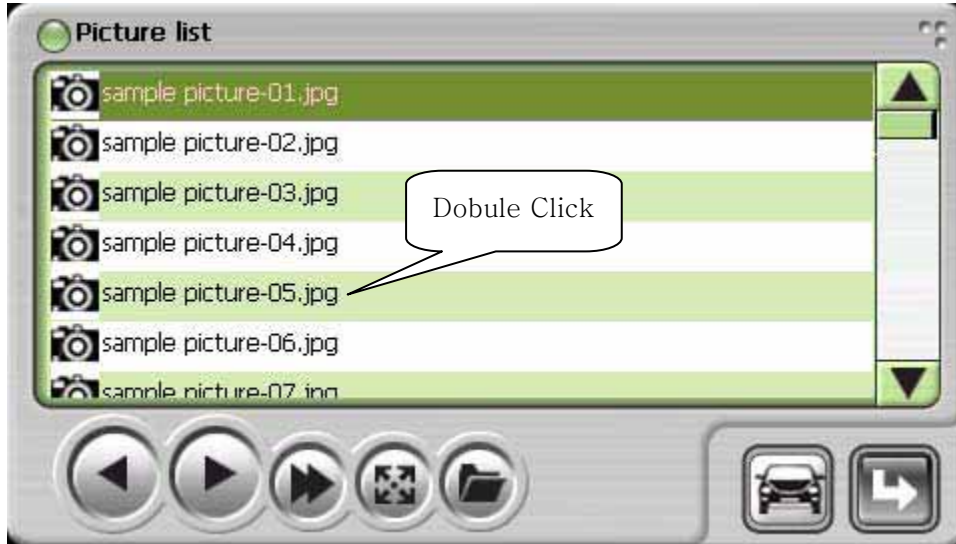
Control Buttons and Functions

| Icons | Names | Functions |
|---|------------------------------|--|
|  | File Button Folder Button | Open your SD/MMC Memory Folder (see “3.3. How to Open Folders”). |
|  | Full Screen Button | Full Screen Mode Button |
|  | Preview File Button | Plays previous file on your [File List] |
|  | Next File Button | Plays next file on your [File List] |
|  | Slider show Button | Press to see all pictures in select folder. |
|  | End Button | Press to finish ‘Picture Viewers”, and go back to [Main Menu]. |
|  | Navigation button | Activates ‘Navigation Mode’. |

How to Save Image Files and See Images.

Connect your Smart Navi to the PC (see 2.9. Connect to PC), and copy your files into “SD/MMC Memory”

Double click on the music that you wish to play in [Music List]



Select the file you want to see on [Picture List] and press [Full Screen Button] to see the picture.

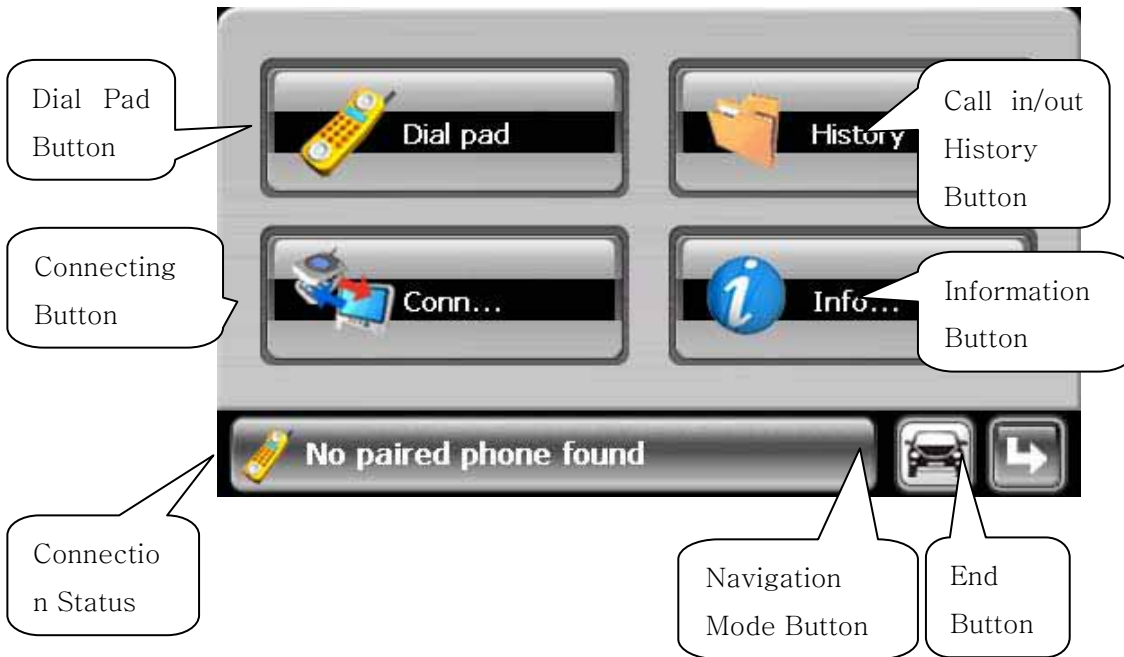
Select the file you want to see on [Picture List] and press [Slide Show Button] to see the all pictures in your folder.

The following sign appears if the selected image file doesn't exists in your folder.




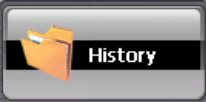


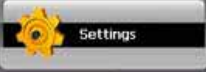


3.7 Blue Tooth Hands Free

Names and Functions



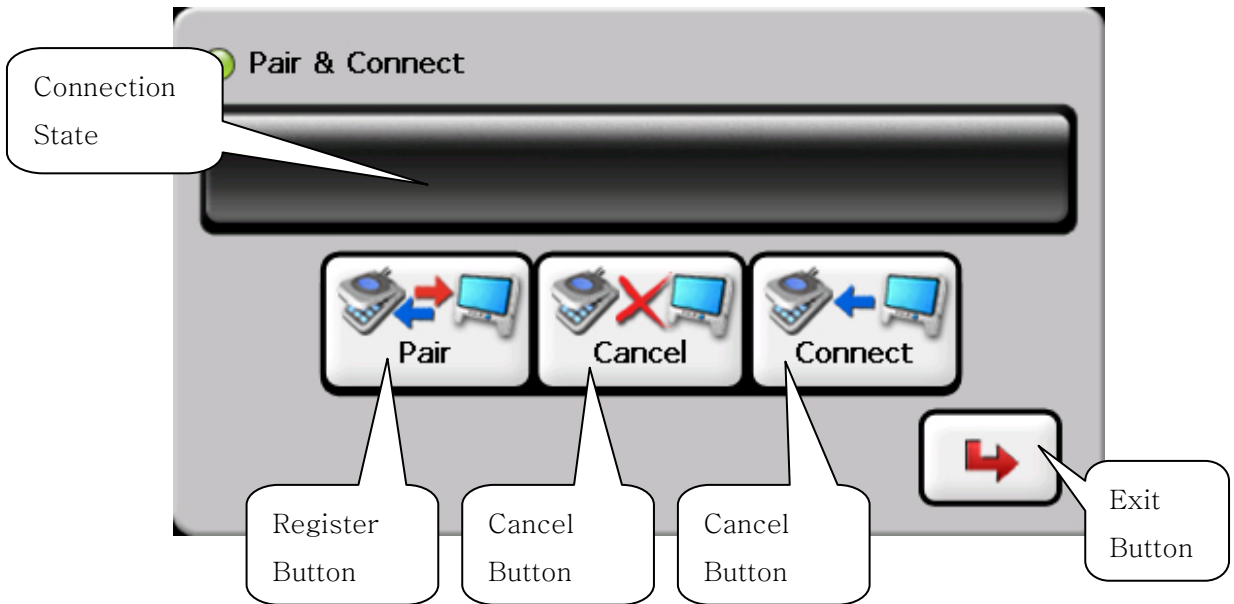
Functions





Control Icon and Functions

| Icons | Names | Functions |
|---|-------------------|---|
|  | Dial Pad Button | Activates [Dial Pad Mode] |
|  | History Button | |
|  | Connecting Button | Connects Smart Navi to your cell-phone. Activates [Register & Connection Mode] |
|  | Disconnect Button | Disconnects Smart Navi to your cell-phone. |
|  | Setting Button | Activates [Information Mode] |
|  | End Button | Activates [Menu Program] |
|  | Navigation Button | Activates "Navigation Mode" |

Register and Connect your Cell Phone.

For using 'Bluetooth hands free', you need to register your cell phone. [Press Connect] to register your cell phone, then the following [Register & Connect] window appears.



| Icons | Names | Functions |
|---|-----------------|---|
|  | Register Button | Press to register your cell phone and Smart Navi. |
|  | Cancel Button | Press to cancel the registration or the connection. |
|  | Connect Button | Press to connect to the connected cell phone. |
|  | Exit Button | Press to go back to [Menu]. |




Press [Register Button] to register your cell phone, and activate blue tooth on your cell phone. (See your cell phone’s manual to activate blue tooth.)

When your cell phone is connected to Smart Navi, you need to enter the password to activate. Enter your password, then press [Enter]



Enter the same password on your cell phone.

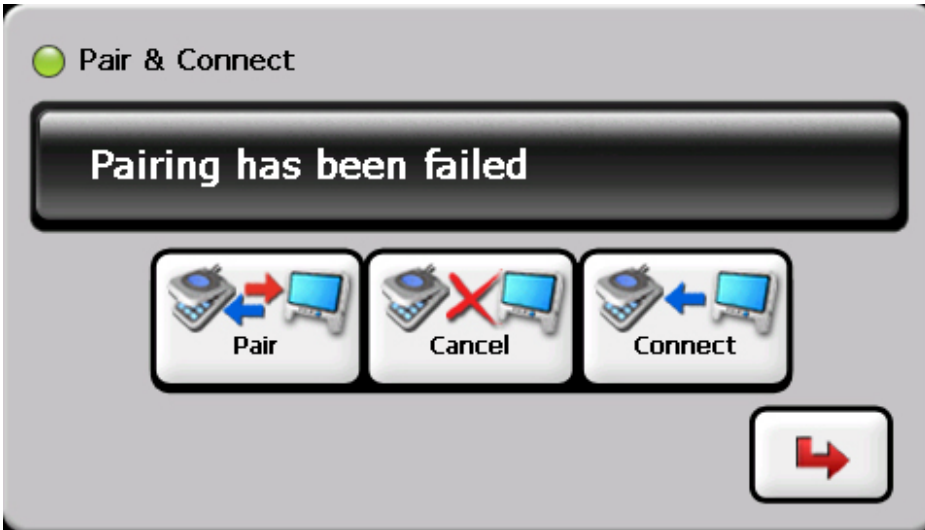


| Icons | Names | Functions |
|---|---------------|---|
|  | Enter Button | Press to enter after you enter your password. |
|  | Delete Button | Press to Delete the numbers that you entered. |
|  | Exit Button | Press to activate [Register & Connect] Menu. |



The order of entering password can be differed depends on your cell phones.

The following dialog will appear if your cell phone is not paired within 1 minutes.



[Blue Tooth Main Menu] will appear when your cell phone is connected successfully. [Connection State] displays the model of the cell phone that connected to the Smart Navi.



Disconnection

Press [Disconnection] Button to disconnect the connection.



Automatic Connection

“Blue Tooth Hands Free” will attempt the connection automatically, when “Saving Mode” is activated while your cell phone is connected.

How to Make Calls and Hang Up

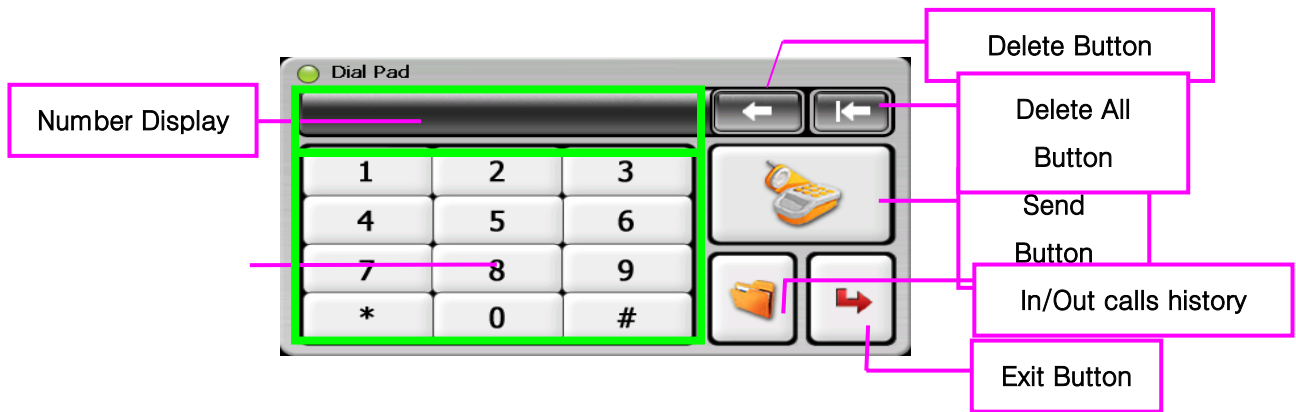
Press [Dial Pad Button], if you want to make a phone call by using Smart Navi.






The following error dialog will appear when the cell phone is not connected properly to your Smart Navi.

See the manual for "Registrations and Connection"



The following [Dial Pad Window] will appear when your cell phone is successfully connected to your Smart Navi.



| Icons | Names | Functions |
|---|--------------------------|--|
|  | Send Button | Enter the phone number on [Dial Button] and press [Send Button] to make phone calls. |
|  | Delete Button | Delete the number that you dialed on [Dial Button]. |
|  | Delete All Button | Delete all numbers that you dialed on [Dial Button] |
|  | History for in/out calls | Press to see the history of IN/OUT calls. |
|  | Exit Button | Press to activate [Blue Tooth Main menu]. |

FCC Information

This device complies with Part 15 of the FCC Rules. Operation is subject to the following two conditions:

- (1) This Device may not cause harmful interface, and
- (2) This device must accept any interference received, including interference that may cause undesired operation.

Note: This equipment has been tested and found to comply with the limits for CLASS B digital device, pursuant to Part 15 of FCC Rules. These limits are designed to provide reasonable protection against harmful interference when the equipment is operated in a commercial environment. This equipment generates, uses and can radiate radio frequency energy and, if not installed and used in accordance with the instructions, may cause harmful interference to radio communications. However, there is no guarantee that interference will not occur in a particular installation. If this equipment does cause harmful interference to radio or television reception, which can be determined by turning the equipment off and on, the user is encouraged to try correct the interference by one or more of the following measures:

- 1.1. Reorient or relocate the receiving antenna.
- 1.2. Increase the separation between the equipment and receiver.
- 1.3. Connect the equipment into an outlet on a circuit different from that to which receiver is connected.
- 1.4. Consult the dealer or experienced radio/TV technician for help.

WARNING

Changes or modifications not expressly approved by the manufacturer could void the user's authority to operate the equipment.