

**Bluetooth Headset
Owner's Manual
BT-700B**



Introduction

The unit is a wireless comfort Bluetooth® headset for mobile phones and offices. When mobile phones replace the ordinary phones at the office, you need a comfortable and ergonomic solution for those who spend long hours on the phone. The unit such a solution, a truly comfortable headset with good sound quality, built for comfortable all day wearing. As an accessory, there is an USB Bluetooth dongle for the PC. With the dongle, you can connect your headset to a computer and use it as an audio device for VoIP applications, for example Skype™.

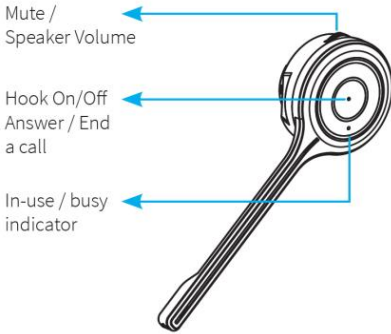
Features

- Bluetooth with improved data transfer, security and connectivity.
- Up to 15 hours talk time.
- At least 96 hours stand by time
- Up to 30 meters working range (class 2)
- Volume control buttons
- Answer button
- Dedicated microphone mute button
- Last number Redial
- Voice Dial support
- Low battery indication
- Adjustable headband and soft ear cushion for all day wearing comfort
- LED status indication
- Desktop charging stand with LED charging status indicators (Option)
- Car-Charger (Option)
 - The charger just charge the product when they are plugged in each other.
 - The charger does not have other function.

Overview

Charging LED and LED indicators

Direct Charging from USB port of PC or charging cradle(optional).



If the headset has been out of use for some item, it may take up to 2 hours to charge it fully. Normal charging time is 2-3 hours. Low battery is indicated by the flashing red LED on the headset.



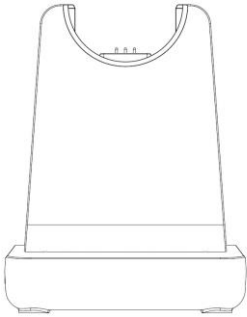
Headset Hanger: For your convenience, fix the headset hanger on any place available.





Micro USB Charging Cable

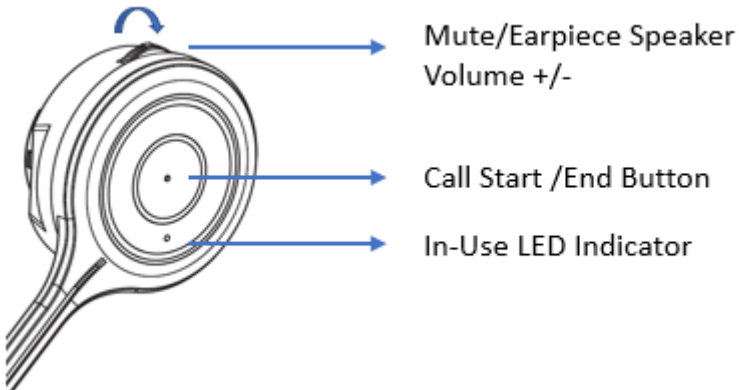
On Cradle charging from USB port of PC

If the headset has been out of use for some time, it may take up to four hours to charge it fully. Normal charging time is 3-4 hours. Low battery is indicated by the flashing red LED on the headset. The headset can only be placed in one direction in the charging stand.

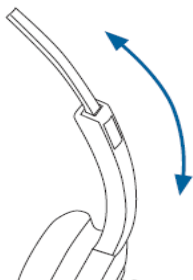


-  Power LED (Red)
-  Charging Status LED
 - Full : Green
 - Charging : RED

Headset Controls



Headband adjustment



Adjust the headband to a comfortable fit by sliding the headband up or down.

There are two different types of ear cushions supplied with the product, leatherette and foam.

Turning the headset on and off

Turn on the headset

Press and hold the answer button for 2 seconds. Release the button when the LED flashes green and a short beep is heard in the speaker.

Turn off the headset

Press and hold the answer button for 4 seconds. Release the button when the LED flashes red 3 times.

Pairing

Prior to using the headset, it must be paired and connected to another Bluetooth device, such as a mobile phone. For specific instructions, check the users guide of your phone.

General procedure

- Turn on Bluetooth on your phone
- Put the headset in pairing mode (make sure the headset is switched off, press and hold the answer button for 4-5 seconds until the LED flashes red and green)
- Perform a search for Bluetooth devices on your phone.
- Connect to >>device logo<< when found. The PIN code is 0000 (four zeros)

Different phones have different ways to handle Bluetooth devices. Read the users manual of your phone for more info. Some phone for more info. Some phones will connect to the headset automatically when it is within range, for example when you return to your office. For other phones, it may be necessary to reconnect manually when the connection has been broken.

The pairing mode is active for 3 minutes. After that, the headset will enter standby mode.

Using the headset

Answer a call

- Press the answer button briefly.

Make a call

- Dial the number on the mobile phone and press the answer button briefly.

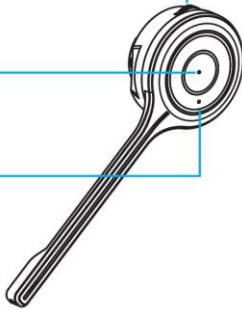
End a call

- Press the answer button or end the call on the mobile phone.

Mute /
Speaker Volume

Hook On/Off
Answer / End
a call

In-use / busy
indicator



Volume adjustment

- Press volume up/volume down to adjust the listening volume. There is a small notch on each volume button that makes them easy to find. The headset listening volume can also be adjusted on the phone.

Note that high listening volume settings may cause echo or other noise on the line, for one or both parties on the line. Try to lower the listening volume if this is the case.

Important! – High listening volume settings may be harmful to your hearing.

Headset ring alert adjustment

The type of ring alert signal in the headset will vary depending on your telephone model. Some phones will transfer your ordinary ring melody to the headset. In these cases, the volume and ring melody adjustments are made in the phone.

With other telephone models, there is an internal ringer alert in the headset when you receive an incoming call. This ringer alert tone can be set to two different modes.

For using this function, disconnect Bluetooth device with the phone.

- Press and hold Volume Up and Down simultaneously for 1 second. A beep tone is heard in the speaker.
- To resume the default setting, press Volume Up and Volume down simultaneously briefly. A beep tone is heard in the speaker.

Mute

- Press and release the mute button. Press again to resume the call.

A beep tone is heard every thirty seconds when mute mode is active.

Transfer sound from/to the headset or mobile phone

- To transfer the sound from the phone to the headset, use the mobile phone. Refer to the manual of the mobile phone.

Voice dialing

- Press and hold the answer button 2-3 seconds to activate voice dial.

In general, voice dial must be activated on your phone before you can use it. For more information on voice dialing and voice commands, refer to your phone's user guide.

Technical information

Safe and efficient use

Do not expose your product to humidity, liquid or extreme temperature conditions. Such conditions, or other rough treatment such as dropping or bending the product may damage it. Do not use any accessories or chargers other than original intended for use with this product. Neither headset nor charger contain any user serviceable parts and must not be opened.

A Bluetooth device use radio signals to communicate with other devices. The power of this radio signal is low, maximum 0.001 Watts. Do not use the product where it is forbidden, for example in air planes, at hospitals, in blasting areas or in explosive atmospheres. Radio signals may interfere with other electronic devices, especially if these are not shielded.

Permanent hearing loss may occur if headsets are used at high listening volumes for longer periods of time.

Set the volume to a safe level. You can adapt to high listening volume over time, especially in a noisy environment where the level of sound may seem normal even if the volume is high. Reduce the time you use a headset with high listening volume.

Battery information

The device is equipped with a rechargeable Lithium-polymer battery. A new battery will need a few charging cycles before it can reach maximum capacity. A fully charged battery will be loosed its charging power over time even if the headset is not used.

Battery capacity and life span may be reduced if the device is exposed to extreme high or low temperatures, for example if it is left in a car. A device with a cold or hot battery may stop working until it is back to normal (room) temperature. Battery capacity at temperatures below -0° C is reduced.

Never dispose of batteries in open fire since they may explode. Always dispose of use batteries and electronic devices according to local recycling regulations.

FCC Information

This device complies with part 15 of the FCC Rules. Operation is subject to the following two conditions:

1. This device may not cause harmful interference, and
2. This device must accept any interference received, including interference that may cause undesired operation.

FCC notification to users

This equipment has been tested and found to comply with the limits for a CLASS B digital device, pursuant to Part 15 of the FCC Rules. These limits are designed to provide reasonable protection against harmful interference when the equipment is operated in a commercial environment. This equipment generates, uses, and can radiate radio frequency energy and, if not installed and used in accordance with the instructions, may cause harmful interference to radio communications. However, there is no guarantee that interference will not occur in a particular installation. If this

equipment does cause harmful interference, the user is encouraged to try to correct the interference by consulting with a dealer or an experienced technician for technical assistance.

Any changes or modifications to the equipment not expressly approved by the party responsible for compliance could void user's authority to operate the equipment.

WARNING & SAFETY INFORMATION

This equipment complies with FCC radiation exposure limits set forth for an uncontrolled environment.

Help and tips

Troubleshooting

If you have problems connecting the headset to your phone, do as follows:

- Check that the headset is charged, turned on and within 10 meters of the phone.
- Check that Bluetooth is switched on your phone.
- Check that the headset is listed as a headset device in your phone and also connected. You may need to re-connect to the headset
- Try removing the headset from the phone, then pair and connect again.
- **If the headset stops functioning, even though it is fully charged:** Reset the headset by switching it off, wait for 15 seconds and then turn it on again. You might try to reset the phone as well.

Some features are not possible to use with a certain phone:

- Check the user manual of your phone for missing settings or functions that needs to be activated.
- Different mobile phone manufacturers may implement Bluetooth functions in different ways. The unit should work with all phones that support the Headset and Hands-free Bluetooth profiles, but functionality may vary depending on the telephone model you use. You might also want to check for the latest firmware for your phone.

Maintenance

Your headset is a technically advanced device containing circuit boards and fine mechanics, made from top grade component. To increase reliability and life span, always treat your headset with care.

- Do not expose the headset to moist, liquids, rain or dust.
- Store the product at a dry and dust-free location.
- For cleaning, use a dry cloth.
- Do not store a fully charged headset in the charging stand for longer periods of time.
- Ear cushions are available as spare parts.

Warranty and service

We will repair or replace, at our opinion, this product if found defective due to materials or workmanship within the warranty period beginning from the original date of purchase. This product is warranted by authorized representative for the period specified.

The Original dated purchase receipt must be presented to the authorized service center when service is rendered. On all carry-in models, transportation to and from the service station is the responsibility of the purchaser.

This warranty does not cover damages due to accident, fire, flood, earthquake and/or other acts of God; misuse, incorrect line voltage, improper installation, improper or unauthorized repairs, commercial use or damages occurred in shipping. Exterior and interior finish, lamps, glass, plastics parts and temperature probes are not covered under this warranty. Customer adjustment according to the owner's manual are not covered under this warranty. This warranty is automatically void if the serial number is missing or altered.

TECHNICAL DESCRIPTION

Technology	Bluetooth
Frequency Range	2400 ~ 2483.5 MHz
RF Channel	79 Channels
Channel Separation	1 MHz
Hopping Channel Type	Adaptive Frequency Hopping System
Modulation Type	GFSK, $\pi/4$ DQPSK, 8DPSK
Maximum Output Power	4.0 dBm
Antenna Type	Integral Chip Antenna
Antenna Total Avg. Gain	Typ. -0.9 dBi
Power Supply	Li-Polymer DC3.7 V 370 mA
Playing Time	Over 20.0 H
Charging Time	2.5 H
Operation Range	10m Indoor
Operation Temperature	0 °C ~ 40 °C

WARRANTY CARD

Mr./Mrs./Miss/Go. _____

Telephone No. _____

Address _____

Model No. _____

Brand _____

Serial No. _____

Invoice No. _____

Dealer _____

Date of Purchase _____

Note : THIS WARRANTY CARD WILL BE VOID IF IT IS
NOT MAILED BACK TO OUR COMPANY WITHIN
10 DAYS FROM DATE OF PURCHASE,
WARRANTY CONDITIONS
(PLEASE SEE OVERLEAF)