

DBTEL
22Mbps Wireless LAN Card

Quick Installation Guide

Warning

To prevent fire or shock hazard, do not expose the unit to rain or moisture. To avoid electrical shock, do not open the cabinet. Refer servicing to qualified personnel only.

Owner's Record

The model and serial numbers are located on the bottom of the product. Record the serial number in the space provided below. Refer to them whenever you call upon your DBTEL dealer regarding this product.

CAUTION

You are cautioned that any changes or modifications not expressly approved in this manual could void your authorization to use the device.

FCC ID: XXXXXXXX

Exposure to Radio Frequency Radiation.

The radiated output power of the Wireless LAN is far below the FCC radio frequency exposure limits. Nevertheless, the Wireless LAN Access Point shall be used in such a manner that the potential for human contact during normal operation is minimized.

FCC Radio-Frequency Exposure Statement

This equipment generates and radiates radio-frequency energy. In order to comply with FCC radio-frequency radiation exposure guidelines for an uncontrolled environment, this equipment has to be installed and operated while maintaining a minimum body to antenna distance of 2.5 cm. Based on continuous exposure of 30 minutes. Users are not permitted to make changes or modify the system in any way.

NOTE:

This equipment has been tested and found to comply with the limits for a Class B digital device, pursuant to Part 15 of the FCC Rules. These limits are designed to provide reasonable protection against harmful interference in a residential installation. This equipment generates, uses, and can radiate radio frequency energy and, if not installed and used in accordance with the instructions, may cause harmful interference to radio or communications. However, there is no guarantee that interference will not occur in a particular installation. If this equipment does cause harmful interference to television reception, which can be determined by turning the equipment off and on, you are encouraged to try to correct the interference by one or more of the following measures:

- Reorient or relocate the receiving antenna.
- Increase the separation between the equipment and receiver.
- Connect the equipment into an outlet on a circuit different from that to which the receiver is connected.
- Consult the dealer or an experienced radio/TV technician for help.

You are cautioned that any changes or modifications not expressly approved in this manual could void your authority to operate this equipment. This device must not be co-located or operating in conjunction with any other antenna or transmitter.

The supplied interface cable must be used with the equipment in order to comply with the limits for a digital device pursuant to Subpart B of Part 15 of FCC Rules.

Safety Information

Warning

- Opening the unit, for whatever reason, could lead to damages that are not covered by the warranty.
- Do not touch the device or accessories during thunderstorms. Electrical shock could result.
- For indoors use only.
- Do not use this equipment on hospital premises. Doing so may cause medical devices to malfunction.
- If using the equipment nears a pacemaker, make sure it is at least 9 inches (22 cm) away from the pacemaker.
- Do not use this equipment in an aircraft, as doing so could cause the aircraft's equipment to malfunction.

- Avoid locations that are directly exposed to sunlight or heaters.
- Internal overheating could result in fire or damage to the unit.
- Do not insert any metallic objects inside the connectors. Short-circuiting the pins could cause fire or damage to the unit.

Be careful to insert connectors squarely. Crooked insertion could cause pins to short-circuit, possibly causing fire or damage to the unit.

The identification of the product:

Product Name: Wireless LAN Card

Model: DB-6802-L1

Technical Support:

DBTEL Incorporated

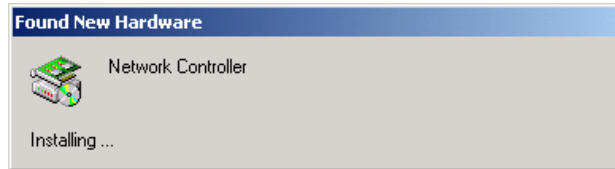
Address: No.29, Tzu Chiang St., Tu-Cheng, Taipei, Taiwan, R.O.C.

Telephone: +886-2-22682081

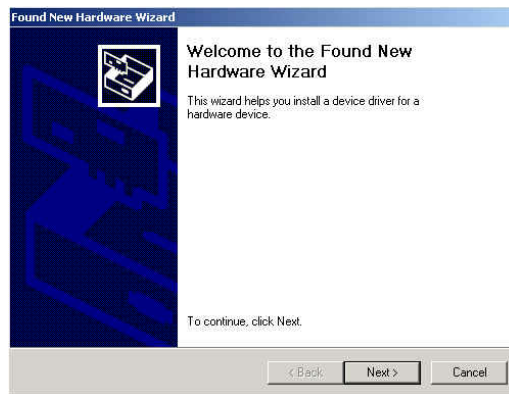
Fax: +886-2-22681964

Installation

First, insert DB6802 WLAN Card into the PCMCIA slot on your computer.
Then the system detected your card



Then the wizard will popup automatically to help you to setup the device driver. Let's press "Next".



Choose "Search for suitable driver for my device (recommended)" and then press "Next".



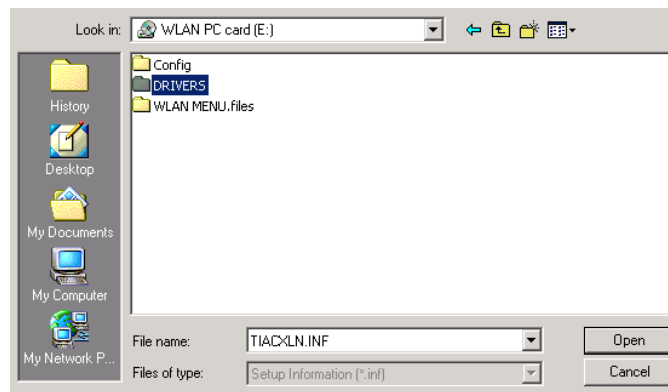
Choose "Specify a location" and then press "Next".



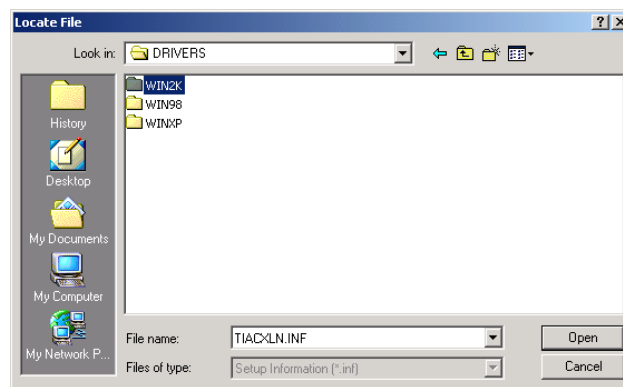
Then screen will shows “Found New Hardware Wizard” and press “Browse”



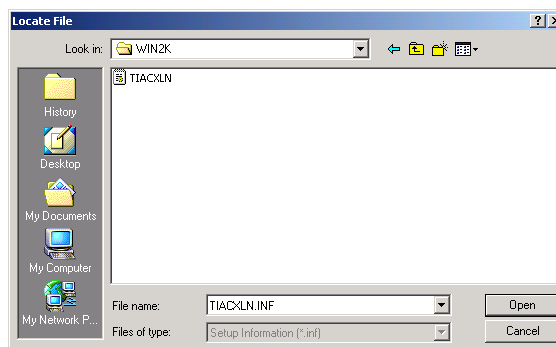
Select the CD-ROM device and it's will shows “Config”, ”Drivers” and ”WLAN MENU files”. Please select Drivers and press “Open”.



Next step is to select the operation system that you used. For example “WIN2K” then press open.



Then it will display WIN2K driver file, please select it and press “Open”.



Here you can press “ok” to proceed the hardware installation.



In Windows 2000 operation system, it's will display “Digital Signature”. Please click “Yes” then continue to installation.

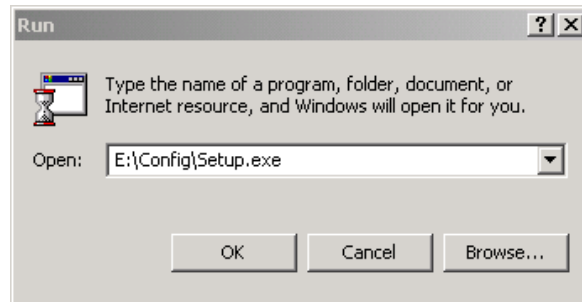


When display next screen that you have successfully installed the driver for DB-6802 WLAN Card.

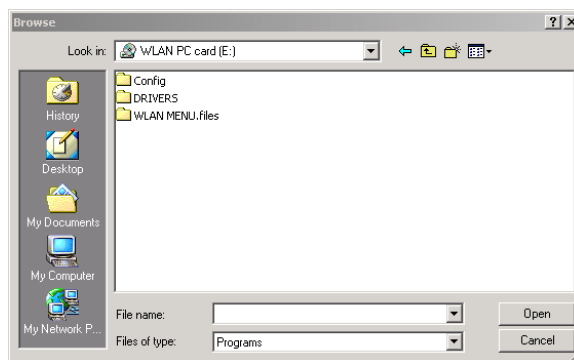


Utility Installation

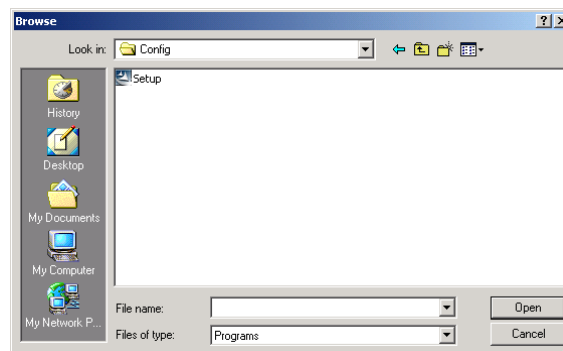
- (1) Use **RUN** in the **Start Menu** to find **Setup.exe** and press **“Browse”**.



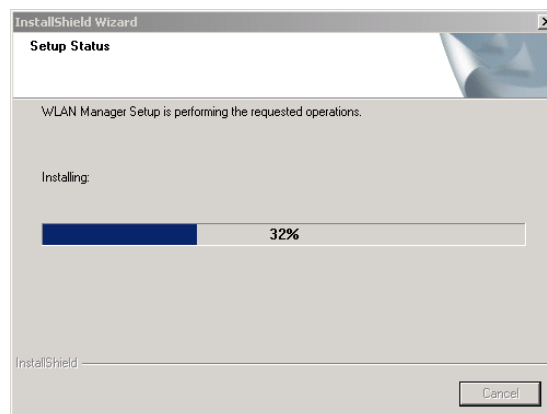
- (2) Then please select **“Config”** folder and press **“open”**.



- (3) Then you will find **“Setup”** and press **“open”**



- (4) Then the installation will operate and complete automatically.



When finish, there will appear an **icon** in right-bottom of your screen. You have successfully installed the utility.

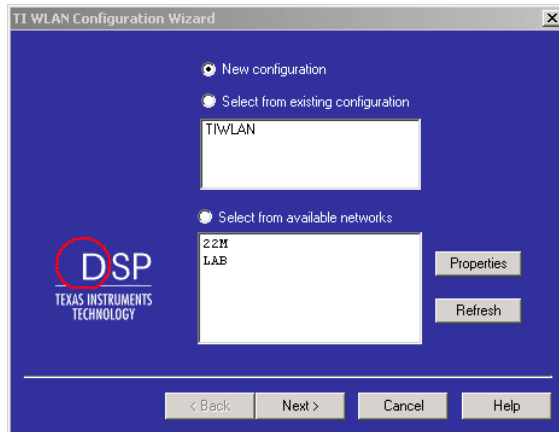


Create a new Configuration

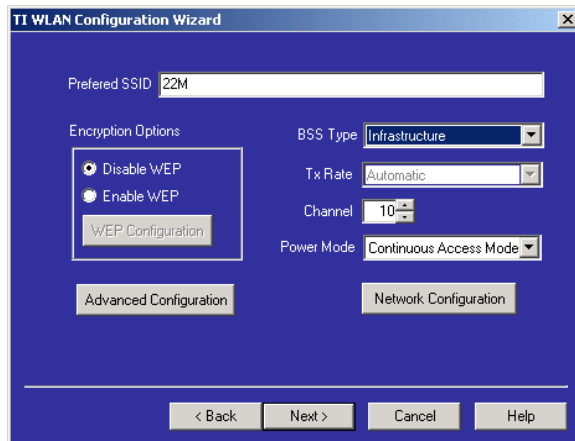
Click the right button on your mouse in the right hand corner of the screen. Then choose “TI-WLAN Configuration”



Select “New Configuration” and then press “Next” button in this step.



Here the system will display bellowing screen. Enter your “Wireless network’s SSID”, “BSS Type” and “Channel”. Then click “Next”



Now, you have installed the WLAN PC Card successfully.

