

INTRODUCTION

Thanks for choosing the YEZZ Andy 5T, Dual SIMs Android smart phone based on 1.2 GHz Quad-Core Processor. This smart phone is running on Android OS, v4.4. If you'd like your phone to live a long and fruitful life, please read this guide carefully and keep it for future reference. You never know when you might need it.

And don't worry if the pictures we use to demonstrate your phone's functions look a little different from what you see on its screen. It's the functions that matter.

* The Manufacturer reserves the right for the changes in the manual without advanced notice.


YEZZ Andy 5T

Quick Guide

- 2 -

Safety

Safety Precautions

 Please read through the following briefings carefully, and act in accordance with these rules, so as to prevent causing any danger or violating any law.

Information about the meaning of Logo WEEE (Waste Electrical and Electronic Equipment):



The WEEE logo on the product or on its box indicates that this product must not be disposed of or dumped with your other household waste. You are liable to dispose of all your electronic or electrical waste equipment by relocating over to the specified collection point for recycling of such hazardous waste. Isolated collection and proper recovery of your electronic and electrical waste equipment at the time of disposal will allow us to help conserving natural resources. Moreover, proper recycling of the electronic and electrical waste equipment will ensure safety of human health and environment.

Caution: risk of explosion if battery is replaced by an incorrect type.

Dispose of used batteries according to the instructions.

For pluggable equipment, the socket-outlet shall be installed near the equipment and shall be easily accessible.

Using your phone safely



On The Road

Using a phone while driving is illegal in many countries. Please follow local laws and drive safely at all times.



Near Sensitive Electronics

Don't use your phone near sensitive electronic equipment –

particularly medical devices such as pacemakers – as it could cause them to malfunction. It can also interfere with the operation of fire detectors and other automatic-control equipment.

For more information about how your phone affects pacemakers or other electronic equipment, please contact the manufacturer or your local distributor.

Your phone may cause interference when used near TVs, radios or automated office equipment.



While Flying

Your phone can cause interference with aircraft equipment. So it's essential you follow airline regulations. And if airline personnel ask you to switch off your phone, or disable its wireless functions, please do as they say.



In Hospital

Your phone may interfere with the normal operation of medical equipment. Follow all hospital regulations and turn it off when you're asked to by posted warnings or medical staff.



At a Petrol Station

Don't use your phone at petrol stations. In fact, it's always best to switch off whenever you're near fuels, chemicals or explosives.



Around Water

Keep your phone away from water (or any other liquid). It's not a waterproof model.



Making Repairs

Never take your phone apart. Please leave that to the professionals. Unauthorized repairs could break the terms of your warranty.



Broken Antenna

Don't use your phone if the antenna is damaged, as it could cause injury.

- 3 -

- 4 -



Around Children

Keep your mobile out of children's reach. It should never be used as a toy and it might not be good for their health.



Original Accessories

Only use the original accessories supplied with your phone or those approved by the manufacturer. Using unapproved accessories may affect performance, make the warranty void, break national regulations on the use of mobile phones, or even cause injury.



Near Explosives

Turn off your phone in or near areas where explosive materials are used. Always obey local laws and turn off your phone when requested.



Emergency Calls

To make an emergency call your phone must be turned on and in an area where there's network coverage. Dial the national emergency number and press 'send'. Explain exactly where you are and don't hang up until help has arrived.



Working Temperature

The working temperature for the phone is between 0 Degree and 40 Degree Celsius. Please don't use the phone outside the range. Using the phone under too high or too low temperature might cause problems.



To prevent possible hearing damage, do not listen at high volume levels for long periods.

FCC Compliance

Any Changes or modifications not expressly approved by the party responsible for compliance could void the user's authority to operate the equipment.

This device complies with part 15 of the FCC Rules. Operation is the subject to the following two conditions: (1) This device may not cause harmful interference and 2) This device must accept any interference received, and including interference that may cause undesired operation. Operation is subject to the Condition that this device does not cause harmful interference.

Caution: Changes or modifications not expressly approved by the manufacturer could void the user's authority to operate the equipment.

Note: This equipment has been tested and found to comply with the limits for a Class B digital device, pursuant to part 15 of the FCC Rules. These limits are designed to provide reasonable protection against harmful interference in a residential installation. This equipment generates, uses and can radiate radio frequency energy and, if not installed and used in accordance with the instructions, may cause harmful interference to radio communications. However, there is no guarantee that interference will not occur in a particular installation. If this equipment does cause harmful interference to radio or television reception, which can be determined by turning the equipment off and on, the user is encouraged to try to correct the interference by one or more of the following measures:

- Reorient or relocate the receiving antenna.
- Increase the separation between the equipment and receiver.
- Connect the equipment into an outlet on a circuit different from that to which the receiver is connected.
- Consult the dealer or an experienced radio/ TV technician for help.

Health and safety information

Radio Frequency (RF) Energy

This model phone meets the government's requirements for exposure to radio waves.

This phone is designed and manufactured not to exceed the emission limits for exposure to radio frequency (RF) energy set by the Federal Communications Commission of the U.S. Government:

The exposure standard for wireless mobile phones employs a unit of measurement known as the Specific Absorption Rate, or

SAR. The SAR limit set by the FCC is 1.6W/kg. Tests for SAR are conducted using standard operating positions accepted by the FCC with the phone transmitting at its highest certified power level in all tested frequency bands. Although the SAR is determined at the highest certified power level, the actual SAR level of the phone while operating can be well below the maximum value. This is because the phone is designed to operate at multiple power levels so as to use only the power required to reach the network. In general, the closer you are to a wireless base station antenna, the lower the power output.

The highest SAR value for the model phone as reported to the FCC when tested for use at the ear is 0.656 W/kg and when worn on the body, as described in this user guide, is 0.798 W/kg (Body-worn measurements differ among phone models, depending upon available enhancements and FCC requirements).

While there may be differences between the SAR levels of various phones and at various positions, they all meet the government requirement.

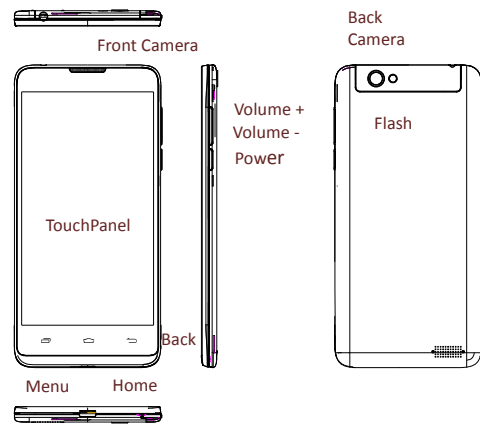
The FCC has granted an Equipment Authorization for this model phone with all reported SAR levels evaluated as in compliance with the FCC RF exposure guidelines. SAR information on this model phone is on file with the FCC and can be found under the Display Grant section of <http://www.fcc.gov/oet/fccid> after searching on

FCC ID: A4JANDY5TL

For body worn operation, this phone has been tested and meets the FCC RF exposure guidelines for use with an accessory that contains no metal and the positions the handset a minimum of 1.0 cm from the body. Use of other enhancements may not ensure compliance with FCC RF exposure guidelines. If you do not use a body-worn accessory and are not holding the phone at the ear, position the handset a minimum of 1.0 cm from your body when the phone is switched on.

Non-compliance with the above restrictions may result in violation of RF exposure guidelines.

About Your Phone



Keys:

Power Key: To power on/off Andy 5T, press and hold for a few seconds of your phone. When Andy 5T is ON, press the power key once to activate or deactivate the screen.

Home key: Touch the key to return to the home screen.

Menu key: In standby mode, touch the key to set wallpaper, manage Widgets, access to system settings. In idle screen, touch and hold the key to view recently accessed features.

Back key: Touch to go back to the previous menu.

Inserting your SIM/MicroSD card

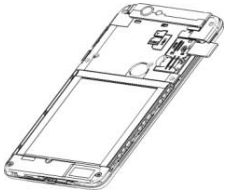
1. open the battery cover
2. insert your SIM card



3. insert your MicroSD card



4. close the battery cover



Notes:  is SD Card Association trademark.

Charing your Phone



- Notes:**
1. You can directly use the lithium battery in the pack. Please normally use off the battery and fully charge the battery for its perfect performance.
 2. If the phone has been shut off for a long time or the battery has been used up, you should charge the phone for 3 to 5 minutes then


turn on.

3. You can not hot plug your SIM/MicroSD card. You must turn off your phone before insert the SIM/MicroSD card.

4. Normal charge temperature: 0°C to 45°C

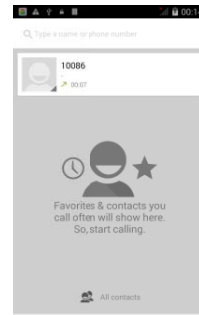
Using your phone

Main menu & its Functions


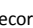
Press  icon into main menu.

Allow you to view a list of features available in your phone:

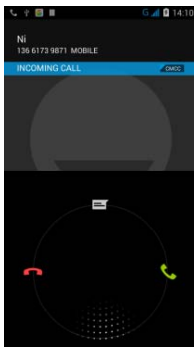
1. Dial the call.






Call record    Setting menu
Dial pad

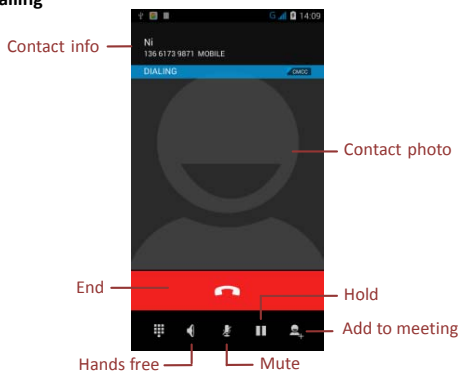
- Tap  icon to view call record.
- Tap  icon to show the keyboard and dial the phone number

2. Answer and reject call



- Slide to , answer the call
- Slide to , reject the call
- Slide to , quick reply by message


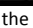
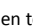
3. Calling



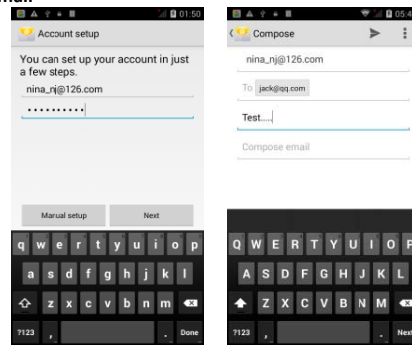
During the call, you can operate according to the above.

4. SMS/MMS



- Tap  icon on the left corner of the screen to create and modify the message.
- Input the type name or number, and message or you can also tap  icon to attach files.
- tap  icon to send message.

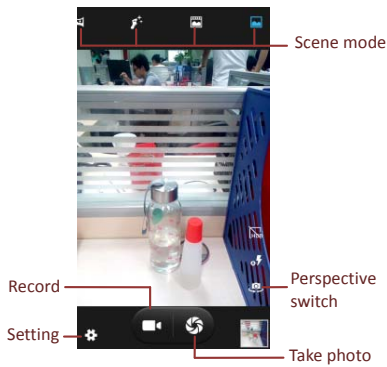
5. Email



Firstly, you will add an account. Then send and receive the emails.

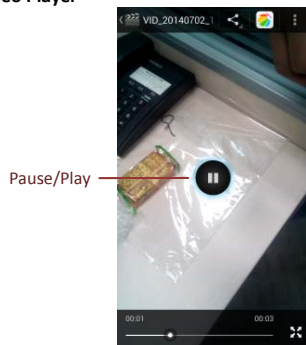
Notes: Before use, you must connect to internet.

6. Camera



- tap from main screen--> camera
- tap or for photo taking or video recording. You may change the options during taking photo or video record by the control panel.

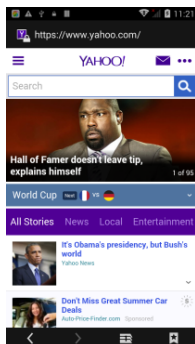
7. Video Player



You can watch videos if you have stored them in your phone.

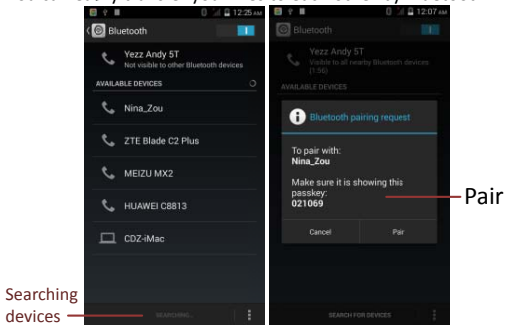
- 13 -

- Tap on main screen--> settings--> WLAN to open it.
- Choose WLAN network and connect to it.
- Input the correct password when needed.
- Connected, you can surf online...



Connect to Bluetooth

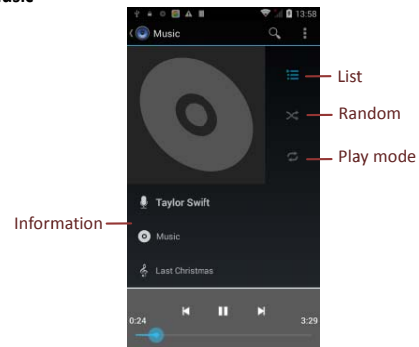
You can easily transfer your files to each other by Bluetooth.



- Tap on main screen--> settings--> Bluetooth to open it.
- Search for Bluetooth devices already open.
- Connect to the destination device by the same passkey.

- 15 -

8. Music

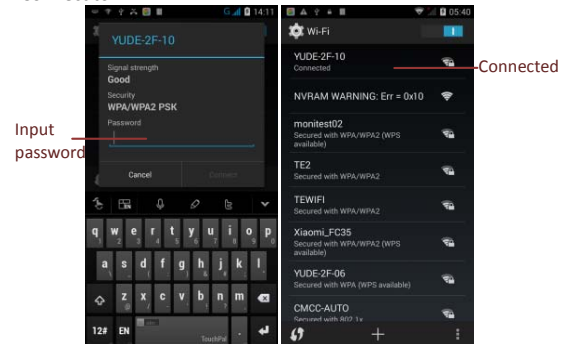


Play the music to enjoy yourself.

9. Other Apps

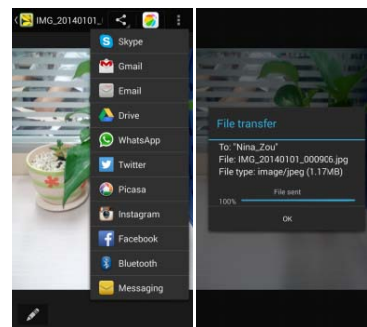
There are some other third party APPS in your phone, for example: Facebook, Skype, WhatsApp, Twitter and so on.

Connect to WLAN



- 14 -

And the connected device will be shown on the available device list. You can transfer files or connect Bluetooth device such Bluetooth earphone, etc.



- 16 -

Maintenance

Use a dry soft cloth to wipe general dirt.

Do not use a hard cloth, benzene or thinner to wipe the phone, otherwise, the surface of the phone will be scratched or could even result in the fading of color.

Take Care of your Device

Your device is a product of superior design and craftsmanship and should be handled with care: The following suggestions will help you protect your phone:

- Always keep the small parts of the phone away from children.
- Keep the device dry, Precipitation, humidity, and all types of liquids or moisture can contain minerals that will rust electronic circuits. If your device does get wet, remove the battery, and allow the device to dry completely before replacing it.
- Do not use or store the device in dusty, dirty areas. Its moving parts and electronic components can be damaged.
- Do not store the device in high or cold temperature. High temperatures can shorten the life of electronic devices and damage batteries.
- Do not attempt to open the device other than as instructed in this guide.
- Do not drop, knock, or shake the device. Rough handling can break internal circuit boards and fine mechanics.
- Do not use harsh chemicals, cleaning solvents, or strong detergents to clean the device. Only use a soft, clean, dry cloth to clean the surface of the device.
- Do not paint the device. Paint can clog the moving parts and prevent proper operation.
- Use indoor chargers.