

# **User Manual**

## Welcome

Thank you for purchasing this cellular phone. To guarantee your cellular phone works properly, please follow the instructions in this manual to prevent any possible incidents or malfunctions. Follow all safety warnings to avoid injury or property damage. Screen displays and illustrations in this user's manual are designed to help you operate your phone to its optimum performance. We continuously strive to improve our products. Therefore, we reserve the rights to revise this user manual or withdraw it at any time without prior notice.

## Contents

<b>GET STARTED .....</b>	<b>1</b>
<b>KEY AND PARTS.....</b>	<b>3</b>
<b>LOCK AND UNLOCK THE SCREEN.</b>	<b>4</b>
<b>MAKE IT YOURS .....</b>	<b>5</b>
<b>ADD WIDGETS AND MORE ICONS..</b>	<b>5</b>
<b>TO HOME SCREEN .....</b>	<b>5</b>
<b>ENTER LAUNCHER .....</b>	<b>6</b>
<b>MAKE A CALL .....</b>	<b>8</b>
<b>REJECT A CALL BY SMS .....</b>	<b>10</b>

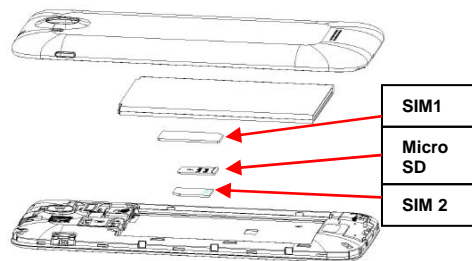
<b>ADD A CONTACT .....</b>	<b>11</b>
<b>SEND AND RECEIVE MESSAGE(S) .....</b>	<b>12</b>
<b>BROWSER THE WEB .....</b>	<b>14</b>
<b>ENJOY MUSIC.....</b>	<b>14</b>
<b>DOWNLOAD APPLICATIONS .....</b>	<b>15</b>
<b>FROM ANDROID MARKET .....</b>	<b>15</b>
<b>MANAGE APPLICATIONS .....</b>	<b>16</b>
<b>SMART COVER.....</b>	<b>17</b>
<b>UI STYLE .....</b>	<b>18</b>
<b>ONE-HANDED OPERATION .....</b>	<b>19</b>
<b>MAINTENANCE &amp; SAFETY .....</b>	<b>21</b>
<b>GENERAL INFORMATION .....</b>	<b>24</b>
<b>SAFETY INFORMATION.....</b>	<b>28</b>
<b>BATTERY INFORMATION.....</b>	<b>34</b>

### Insert SIM card

The phone is a Dual SIM mobile phone allowing you to use the facility of two networks.

To insert SIM card(s):

1. Switch off the mobile phone and remove the rear cover and battery.
2. Insert the SIM card correctly in the card slot(s) (See figure below)



3. Finally insert the battery and replace the rear cover of the mobile phone.

**Insert Memory card**

1. Power off the mobile phone and remove the rear cover and battery.
2. Insert the Micro SD card into the slot.
3. Finally insert the battery and the rear cover of the mobile phone.

**Note:** Use only compatible memory cards for use with this device. Incompatible memory cards may damage the card or the device and corrupt the data stored in the card.

**Charge the Battery or Connect to a computer**

You can charge your battery using the charger or connect the USB cable (supplied with this phone) to the computer.

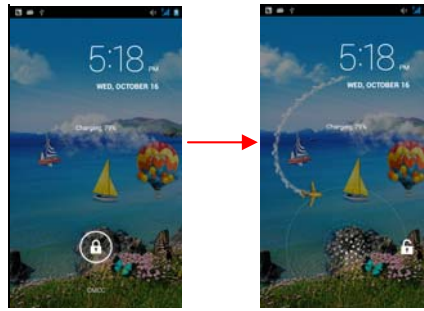
**Note:** Please use the specific battery, otherwise it may cause explosion.

### Key and parts

The smart phone gives you marvelous feelings to experience on Camera, Video recorder, FM radio, Music and Sound recorder. Let you install various APPs, games, and more (supports APK format) by downloading from Android Market.

### Lock and Unlock the screen

Press power button to enter Sleep mode and meanwhile the screen will be locked; press power button again to wake up and then drag to any direction for unlock





### **Make it yours**

1. Home screen: It is your starting point to access all the features on your phone. It displays application icons, widgets, shortcuts, and other features. Long press home screen and Modify Wallpaper.
2. Notification Bar: At the top of the screen, the Status Bar displays the time, status, and notifications. If there is a new message, missed call or something in the notification bar, you can drag it down to open notification panel and click the desired one to have a view. When you finished, you can close it by dragging the panel up or pressing “Back”.

### **Add Widgets and more icons to Home Screen**

Long press Home screen, and then you can Modify Wallpaper; or enter Launcher and long press and hold an application till the screen vibrates, and then release your finger hold.



Long press and hold the widget or icon you want to move. Once the phone vibrates, don't release your hold on the icon. Drag the widget or icon to a new location on the screen Press and hold on an icon till the phone vibrates, and drag the widgets or icon to the trash to remove!

**Enter launcher**

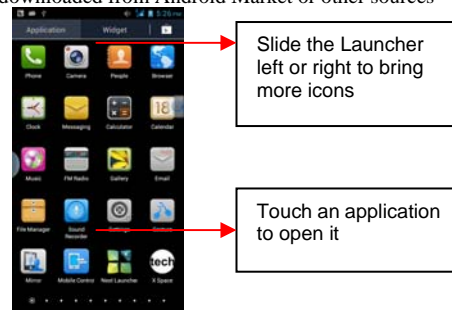
### Open and Switch Applications



At idle screen touch  enter launcher

The Launcher holds icons for all of the applications on your phone, including any application that you

downloaded from Android Market or other sources




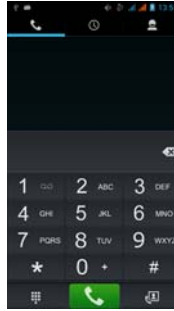
Press Home icon or Back icon to close the Launcher.

### **Switch to Recently Used Application**

Press home key and hold the icon for a few seconds.

## Make a call

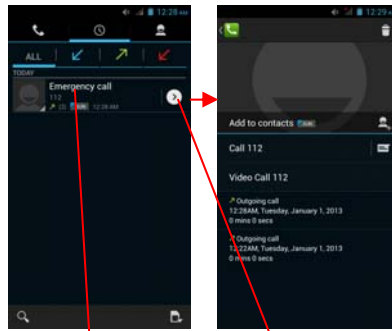
Choose  and enter a complete phone number to make a call. Your phone supports smart search.



Touch  to view call log,

Touch  to enter phonebook.

## Call log

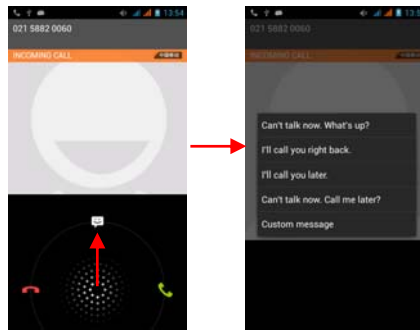


Press this point to  
call directly

Press this point  
enter menu, you  
can call, video  
call, view contact  
etc.


## Reject a call by SMS


While there is an incoming call, and you are inconvenient to accept the call, therefore you can send a message for rejecting the call.

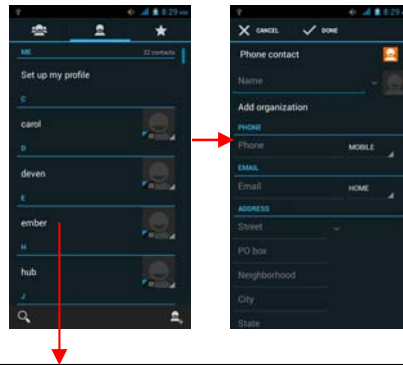


Drag this icon to select and send SMS

## Add a contact

touch  enter contact


Touch  to add new contact

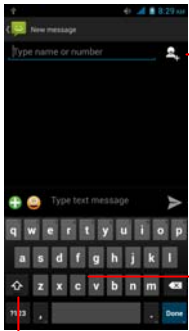


Click here for a contact and press menu key to enter menu view, edit, delete contact, print contact, share contact , associate SIM card.

**Send and Receive message(s)**



Touch  enter messaging, touch compose new message




Tap this icon to select desired contact from phonebook.

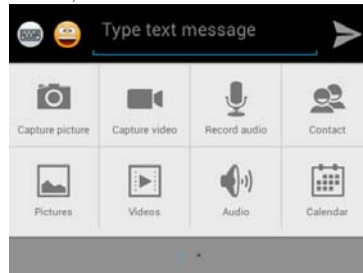
Press space or a punctuation mark to enter the highlighted suggestion

Touch once to capitalize the next letter you type. Touch and hold for caps.



When you are composing a new text message, you can select text for cutting or copying. The selected text is highlighted in blue.

Tap  to add “Attach” including Pictures, Videos, Audios, etc to send MMS.



When a new message comes, you can read by dragging notification panel and click the message, or entering Message to read it directly.

Long press one of the all message thread, you can delete thread”.

## Browser the Web

### **a. Set up Internet/Data connection**

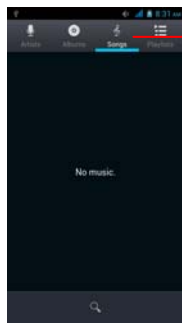
Enter Settings > More..., scroll down to find out Mobile network, and then enter "Access Points Names, choose the desired WAP account.

### **b. Switch on Data connection or WiFi**

To browse the web, you need to switch on Data connection. If there is WiFi around, you can switch on WiFi to use it browse the web.

## Enjoy music

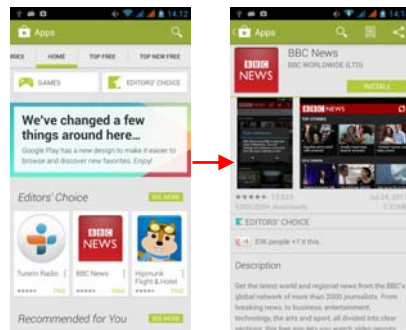
When you copy music to your SD card, the Music player searches the card for music files and builds a catalog of your music, based on information about each file that is stored in the file itself.



Touch a tab to view  
your library in one  
of four ways

### **Download applications From android market**

1. Add Google account
2. Enter play store (Android Market) and download apps

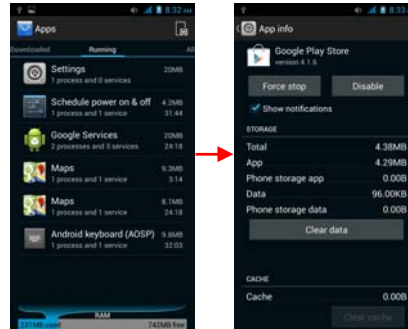


## Manage Applications

As you install downloaded Apps, you need to switch on “Unknown Sources” in Security settings.

Enter Setting > App.

Select one app, you can uninstall, clear data, move to phone/SD card



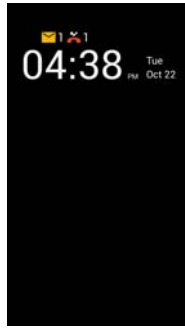
Mobile Control: Mobile tracker & Peer control Code is 1234.

### Smart Cover

This menu can open/close smart cover function.

If this function is opened, when you close the cover, phone will switch to cover interface. This interface can display the date, time, alarm, missed call and

unread messages



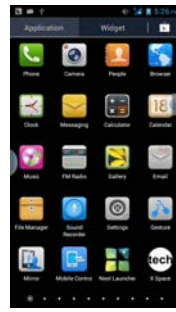
If this function is closed, opening and closing cover will not have any influence on mobile phone.

### UI Style

The phone provides you with two sets of UI style.

Settings > Display > UI style

You can set up white or black UI style



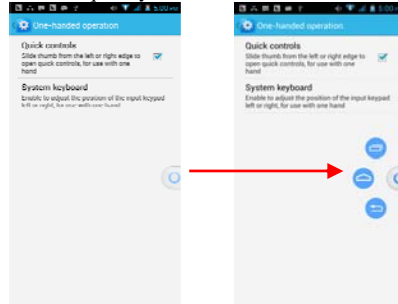
## One-handed operation

If you feel not convenient to use the phone with one hand, you can open the one-handed operation function to realize one hand operation.

Settings > One-handed operation

## Quick controls

The Quick controls function icon is displayed at all screens, if you touch and hold the icon, three function key will displayed, you can slide to one to execute it's function quickly.



## System keyboard

User can adjust the position of the input keypad to left or right, for using with one hand.

User can set the size of the dialer and the input method



interface.



## Maintenance & Safety

Please read and observe the following information for safe and proper use of your phone and to prevent damage. Also, keep the user guide in an accessible

place at all the times after reading it.

**1. After sales service**

Kindly refer to the Warranty Card provided in the sales package box.

**2. Charger and Adapter Safety**

Charger and adapter are designed for indoor use only.

**3. Battery Information and Care**

- Please use the specific battery, otherwise it will cause explosion.
- Please dispose of your battery properly.
- Do not disassemble or short-circuit the battery.
- Keep the battery's metal contacts clean.
- Recharge the battery after long periods of non-use to maximize battery life.
- Battery life will vary due to usage patterns and environmental conditions.
- The self-protection function of the battery cuts the power of the phone when its operation is in an abnormal status. In this case, remove the battery from the phone, reinsert it, and turn the phone on

**4. General Notice**

Using a damaged battery or placing a battery in your mouth may cause serious injury.

- Do not place items containing magnetic components such as a credit card, phone card, bank book, or subway ticket near your phone. The magnetism of the phone may damage the data stored in the magnetic strip.
- Talking on your phone for long period of time may reduce call quality due to heat generated during use.
- When the phone is not used for a long period time, store it in a safe place with the power cord unplugged.
- Using the phone in proximity to receiving equipment(i.e. TV or Radio) may cause interference to the phone.
- Do not immerse your phone in water. If this happens, remove the battery and take it to an Authorized Service Center.
- Do not paint your phone.
- The data saved in your phone might be deleted due to careless use, repair of the phone, or upgrade of the software. Please backup your important phone numbers. (Ring tones, text messages, voice messages, picture, and videos could also be deleted.) The manufacturer is not liable for damage due to the loss of data.
- Do not turn your phone on or off when the phone

is close to your ear.

## General Information

### Battery Care

Your phone is powered by a rechargeable battery

- The voltage range of the phone battery is 3.6 V - 4.2 V
- The battery can be charged and discharged hundreds of times but it will eventually wear out. When the operating time (talk and standby) is noticeable shorter than normal, you should buy a new battery at the time.
- Unplug the travel charger when not in use, and don't leave the battery connected to a travel charger for longer than a week, since overcharging may shorten its lifetime.
- Overcharging may shorten its lifetime, and if left unused a fully charged battery may discharge itself over time
- Never store or charge battery in extreme hot or cold temperature, since extreme temperature can shorten the life of your mobile phone and damage battery
- Use only the charger and batteries that are approved for use or recommended by the manufacturer. Use any unqualified charger or

batteries may cause damages to your mobile phone.

- Use the battery only for its intended purpose.
- Do not leave the battery inside of your car of in extreme weather conditions, since extreme temperature might cause damage to your battery
- Do not short-circuit the battery.  
Short-circuiting the terminals may damage the battery or the connecting object.
- Dispose of used batteries according to local regulations or manufacturer's instructions.  
Do not dispose of batteries in a fire.
- Actual battery life will depend on network configuration, product settings, usage patterns, battery and environmental conditions.

**CAUTION:** RISK OF EXPLOSION IF BATTERY IS REPLACED BY AN INCORRECT TYPE.  
DISPOSE OF USED BATTERIES ACCORDING TO THE INSTRUCTIONS.

#### **Charger attention**

**Attention:** Please check the model of charger firstly before using with this mobile phone.

**Warning:** Only use batteries, chargers, and enhancements

approved by the particular model. Using any other types of batteries, chargers and enhancements will invalidate the approval or warranty, and may be dangerous. Please check with your dealer for availability of approved enhancements. Please grasp and pull the plug, not the cord when you disconnect the power cord of any enhancement.

#### **Care and maintenance**

Your mobile phone is a highly sophisticated electronic device. Please read this information before using your mobile phone. If any device is not working properly, take it to the nearest authorized service center.

##### **Product Care**

- Keep your mobile phone and all its parts out of young children's reach
- Keep your mobile phone dry. Precipitation, humidity, and all types of liquids or moisture can contain minerals that will corrode electronic circuits.
- Avoid exposing your mobile phone to extreme hot or cold temperatures. The temperature range for using the phone is 0°C-40°C.
- Avoid placing your mobile phone close to lit cigarettes, naked flames or any heat source.
- Do not attempt to disassemble it. Only qualified

personnel may install or repair your mobile phone.

- Do not drop, knock or shake your mobile phone. Rough handling can break internal circuit boards.
- Do not paint your mobile phone. Paint could obstruct the earphone, microphone or any moveable parts and prevent proper operation.
- Treat your mobile phone with care and keep it in a clean and dust free place.
- Do not use the phone if the antenna is damaged. If a damaged antenna contacts skin, it may cause a light burn. Please contact the nearest authorized service center to replace the damaged antenna.
- Use chargers indoors.
- Your mobile may have internal and external antennas. As with any radio transmitting device, avoid touching the antenna area unnecessarily while the antenna is transmitting or receiving. Contact with such an antenna affects the communication quality and may cause your mobile to operate at a higher power level than proper operation needed and may reduce the battery life.
- Avoid using the phone at an altitude higher than 3000 meters.

### Access Codes

#### **PIN code**

The Personal Identification Number (PIN code) protects your SIM card against unauthorized use. Your SIM card usually supplies the PIN code. The password can be obtained from your service provider. If the incorrect PIN code occurred three times in succession, you may need to key in PUK code.

#### **PUK code**

The Personal Unlocking Key (PUK code) is required to change a blocked PIN code. The PUK2 code is required to change a blocked PIN2 code. The password can be obtained from your service provider.

If you key in an incorrect PIN2 code three times in succession, you may need to key in the PUK2 code. If incorrect PUK or PUK2 card cannot be used anymore. You might need to contact your service provider for a new card.

#### **Radio frequency energy**

Your mobile phone is a radio transmitter and receiver.



When the phone is turned on, it receives and transmits radio frequency (RF) energy. Depending on the type of mobile phone you possess, it operates on different frequency ranges and employs commonly used modulation techniques. The system handles your call when you are using your phone and it also controls the power level at which your phone transmits.

**Specific Absorption Rate (SAR) information.**

Your phone has been designed to comply with applicable safety requirements for exposure to radio waves. These requirements are based on scientific organizations through periodic and thorough evaluation of scientific studies. These guidelines include safety margins designed to assure the safety of all persons, regardless of age and health.

- The radio wave exposure guidelines employ a unit of measurement known as the Specific Absorption Rate, or SAR. Tests for SAR are conducted by using standardized method with the phone transmitting at its highest certified power level in all used frequency bands.
- This phone is designed to meet the relevant guidelines for exposure to radio waves.
- The SAR limit recommended by the international Commission on Non-Ionizing Radiation

Protection (ICNIRP), which is 2W/kg averaged over ten (10) grams of tissue.

SAR data information for residents in countries /regions that have adopted the SAR limit recommended by the Institute of Electrical and Electronics Engineers (IEEE), which is 1.6 W/kg averaged over one (1) gram of tissue.

#### **Electronic devices**

Most modern electronic equipment is shielded from RF energy. However, certain electronic equipment may not be shielded against the RF signals from your wireless phone, therefore:

- Do not use your mobile phone near medical equipment without requesting permission.

#### **Pacemaker**

Mobile phones may affect the operation of some implanted cardiac pacemakers and other medically implanted equipments. Pacemaker manufacturers recommend that a minimum separation of 20 cm. (6 inches) should be maintained between a hand-held wireless phone and a pacemaker to avoid potential interference with the pacemaker. These recommendations are consistent with independent research by

the Wireless Technology Research Association.

**Persons with pacemakers**

- Should always keep the phone more than 20 cm. (6 inches) from their pacemakers when the phone is switched on
- Should not carry the phone in a breast pocket.
- Should use the ear opposite to the pacemaker to minimize the potential for interference.
- If you have any reason to suspect that interference is taking place, switch off your phone immediately

**Hearing aids**

- Some hearing aids might be disturbed by mobile phones. In the event of such disturbance, you may want to consult your service provider, or call the customer service line to discuss alternatives.

**Aircraft**

- Turn off your mobile phone before boarding any aircraft. Do not use it on the ground without crew permission. To prevent interference with communication systems, you must not use your mobile phone while the plane is in the air.

**Potentially explosive atmospheres**

Switch off your phone when in any area with a potentially explosive atmosphere and obey all signs and instructions. It is rare, but your phone or its accessories could generate sparks. Sparks in such areas could cause an explosion or fire resulting in bodily injury or even death. Areas with a potentially explosive atmosphere are often, but not always, clearly marked. They include fuelling areas, such as petrol station, below deck on boats, fuel or chemical transfer or storage facilities, and areas where the air contains chemicals or particles, such as grain, dust, or metal powders, and any other area where you would normally be advised to turn off your vehicle engine.

#### **Driving**

Check the laws and regulations on the use of mobile phones in the areas where you drive. If you are going to use your phone while driving, please:

- Give full attention to driving.
- Use the “**handsfree**” setting. (Required by law in many countries).
- Pull off the road and park before making or answering a call if driving conditions so require.

RF energy may affect some electronic systems in motor vehicles such as the car stereo, safety

equipment  
etc .In addition, some vehicle manufacturers do not allow use of mobile phones, unless the installation is supported by a handsfree kit with an external antenna in their vehicles. Check with your vehicle manufacturer's representative to be sure that your mobile phone will not affect the electronic systems in your vehicle.

#### **Emergency calls**

##### **Important:**

This phone, like any wireless phone, operates using radio signals, wireless and landline networks as well as user programmed functions. Because of this connections in all conditions cannot be guaranteed. Therefore, you should never rely solely upon any wireless phone for essential communications (e.g. medical emergencies).

Emergency calls may not be possible on all wireless phone networks or when certain network services and/or phone features are in

### Battery Information

Type	Capacity
Li-ion	2400mAh

- The battery life depends on many factors, including the SIM card, network conditions, settings, usage and environment.
- Making calls, turning on the backlight and music player will consume more battery power.
- The standby time is shorter when the network is not available than in the standard status.
- For power saving, the backlight turns off automatically if your phone stands idle for an assigned time.
- The performance of battery varies with the charging status, temperature, local radio wave and backlight status.

**warning**

This device complies with part 15 of the FCC Rules.

Operation is subject to the following two conditions:

(1) This device may not cause harmful interference,  
and (2) this device must accept any interference  
received, including interference that may cause  
undesired operation.

Changes or modifications not expressly approved by  
the party responsible for compliance could void the  
user's authority to operate the equipment.

Note: This equipment has been tested and found to  
comply with the limits for a Class B digital device,  
pursuant to part 15 of the FCC Rules. These limits are  
designed to provide reasonable protection against  
harmful interference in a residential installation. This  
equipment generates, uses and can radiate radio  
frequency energy and, if not installed and used in

accordance with the instructions, may cause harmful interference to radio communications. However, there is no guarantee that interference will not occur in a particular installation. If this equipment does cause harmful interference to radio or television reception, which can be determined by turning the equipment off and on, the user is encouraged to try to correct the interference by one or more of the following measures:

- Reorient or relocate the receiving antenna.
- Increase the separation between the equipment and receiver.
- Connect the equipment into an outlet on a circuit different from that to which the receiver is connected.
- Consult the dealer or an experienced radio/TV technician for help.



SAR tests are conducted using standard operating positions accepted by the FCC with the Phone transmitting at its highest certified power level in all tested frequency bands, although the SAR is determined at the highest certified power level, the actual SAR level of the phone while operating can be well below the maximum value, in general, the closer you are to a wireless base station antenna, the lower the power output.

Before a new model phone is available for sale to the public, it must be tested and certified to the FCC that it does not exceed the exposure limit established by the FCC. Tests for each phone are performed in positions and locations (e.g. at the ear and worn on the body) as required by the FCC.

For body worn operation, this model phone has been tested and meets the FCC RF exposure guidelines when used with an accessory designated for this product or when used with an accessory that contains no metal and that positions the handset a minimum of 1.0 cm from the body.

Non-compliance with the above restrictions may result in violation of RF exposure guidelines