

## 1 Before installing

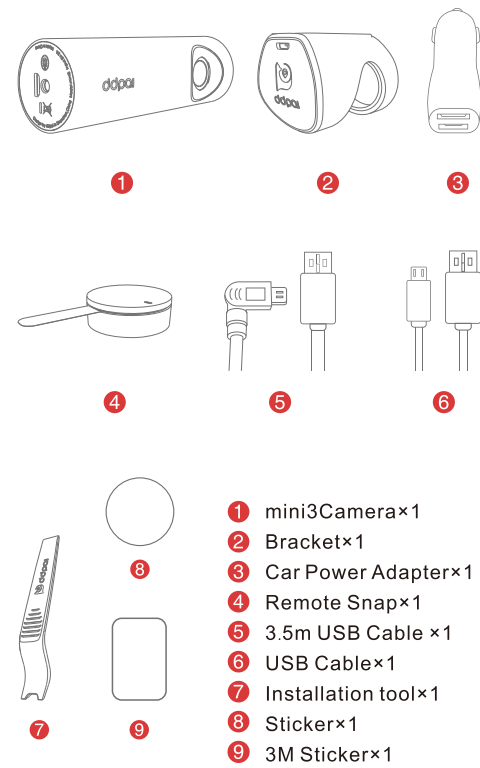
DDPai Mini3 dashcam uses built-in Wifi to transfer the images and videos to the DDPai App. You can use DDPai App to view, download and share the images or videos you take during your drive way. You can also use DDPai App to configure the dashcam settings.

Before install the DDPai dashcam, please download DDPai App in Apple App Store (iOS) or Google Play Store (Android).

### Safety Instructions:

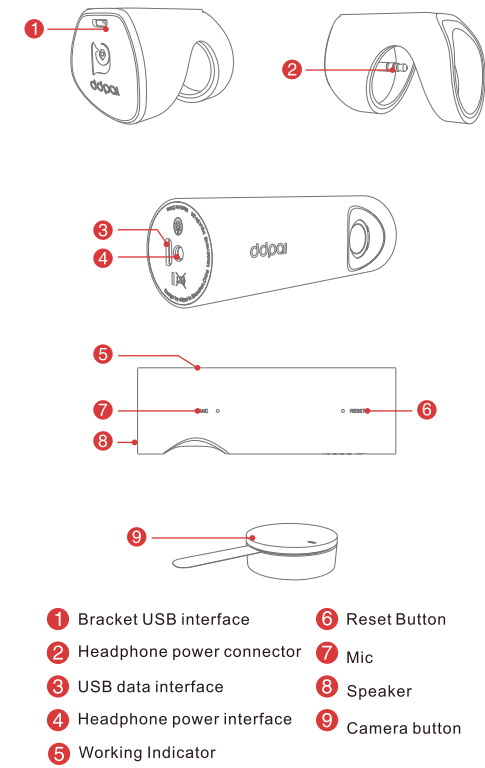
- Do not adjust the product or use DDPai App while driving.
- Do not install the product in a location where the product can interfere with the driver's field of vision.
- Do not install the product in the location of the air bags.
- Please do not expose the camera or snapshot remote under extreme high temperature, it may cause damage or recording failure.
- If the product is used outside the optimal temperature range (-20°C – 70°C / -4°F – 154°F), performance can decline or malfunctions may occur.
- Do not repair the product yourself. If anything goes wrong with DDPai dashcam, please contact customer service.

## 2 What' s in the box



- 1 mini3Camera×1
- 2 Bracket×1
- 3 Car Power Adapter×1
- 4 Remote Snap×1
- 5 3.5m USB Cable ×1
- 6 USB Cable×1
- 7 Installation tool×1
- 8 Sticker×1
- 9 3M Sticker×1

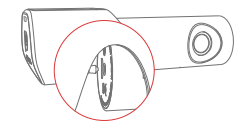
## 3 At a glance



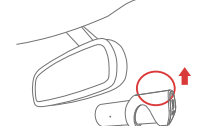
- 1 Bracket USB interface
- 2 Headphone power connector
- 3 USB data interface
- 4 Headphone power interface
- 5 Working Indicator
- 6 Reset Button
- 7 Mic
- 8 Speaker
- 9 Camera button

## 4 Dashcam installation

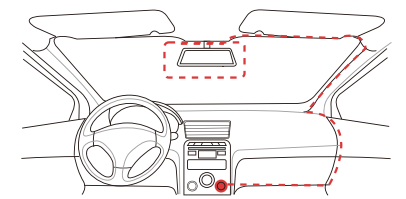
- Plug in the bracket sleeve into the dashcam camera through headphone connector.



- Peel off the protective film from the double-sided tape and attach the dashcam camera to the windshield.



- Plug the power cord into the cigarette lighter socket (2.1A Output is recommended).

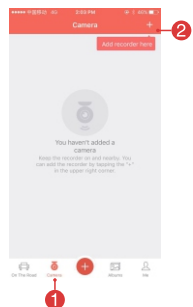


- Start engine. The DDPai dash cam will power up and start recording. You will hear 'Hello, DDPai' and the red light start flashing.

## 5 Light Indicator

Red	Working light indicator. Breath flash indicates normal condition.
Blue	Constant indicates USB transmission status, breach flash indicates Parking mode.
Purple	Quick flash indicates storage exceptions, constant indicates upgrading status.

## 6 Connect to DDPai App



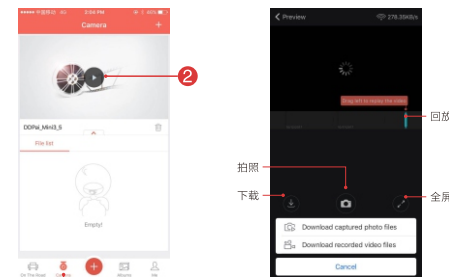
1. Search for the DDPai App in the Google Play Store or Apple App Store and install it on your smartphone.
2. "Pair" your smartphone with the DDPai dashcam via built-in Wi-Fi.

- **iOS:** Select 'DDPai\_Mini3' on the network list and then enter the default password: 1234567890.
- **Android:** Select 'DDPai\_Mini3' on the scanned list and then enter the default password: 1234567890.

Note: You can change the Wifi name and password under DDPai App settings. If you forget the password, press the 'Reset' button on the dashcam for 5 seconds to default the password (1234567890).

## 7 Preview, play back and download the video

- **Preview the video:** Select the video file you want to play from the video list. Click '🔍' to preview the video on full screen.
- **Play back the video:** On the video preview screen, you can drag the progress bar to select the starting time of the video you want to play. Click the video or pause for 5 seconds to start playing video.



- **Download the picture:** Select '📷' to start downloading pictures. You can choose the pictures you want to download.
- **Download the video:** Select '📹' to start downloading videos. You can drag the progress bar to select the starting time of the video and then click 'Download' to start downloading the video. (The maximum length of the video you can download is 5 minutes, and the minimum is 5 seconds).

## 8 Take pictures

DDPai dashcam provides you three ways to take pictures:

- Use DDPai remote.
- Auto taking pictures when the dashcam sense a move or collision.
- Select the '📷' capture button to capture the image using DDPai app.

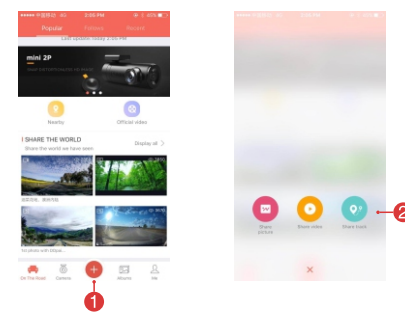
Note: If you use the DDPai remote or auto taking pictures, a 10 seconds length related video will also be recorded in the dashcam to provide you the necessary information you may need.

If you cannot use the DDPai remote to take pictures, the possible causes are:

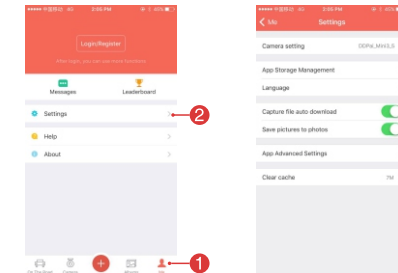
1. Low battery power. Please replace the battery of the remote immediately.
2. Lose remote pairing. Please pair the remote with DDPai app again. Go to 'Me->Settings->Camera Settings->Advanced Settings->' and click the remote button for 3-5 times until it prompts 'Pairing succeeded'.

## 9 Share the image or video

Click '+' on the DDPai app and you can share the image or video with your friends.



## 10 DDPai app settings



Go to 'Me' of the DDPai app.

**Camera setting:** You can configure the settings of the dashcam, such as modify the name and password of the dashcam, volume settings, recording, the resolution of the image or video.

**App Storage Management:** Configure the reserved place. DDPai app will stop downloading pictures to your smartphone when it is less than the number you set.

**Language:** Defaults to English.

**Capture file auto download:** The pictures you take will be saved to DDPai App album automatically if you turn this on.

**Save pictures to photos:** The pictures you take will be saved to Photo album of your smartphone if you turn this on.

## 11 Technical Specifications

**Processor:** HUAWEI HiSilicon processor; Format H.264 HD video coding. Low power consumption.

**Lens:** 6-class glass lens and 1 infrared filter, 140 degrees wide angle, F1.8 aperture

**Wireless module:** Built-in WIFI, 2.4GHz, Direct WIFI with your smartphone, 2.4GHz remote.

**Storage:** Built-in storage, eMMC high speed, auto-loop.  
**Image Output:** Wireless video output, Android/iOS, 6 axis acceleration sensor.  
**Video Resolution:** 2560\*1600@30fps. Adjustable by DDPai APP.  
**Image Resolution:** 2688\*1944  
**Internal Memory:** 4Gb

## **FCC STATEMENT**

1. This device complies with Part 15 of the FCC Rules. Operation is subject to the following two conditions:

- (1) This device may not cause harmful interference.
- (2) This device must accept any interference received, including interference that may cause undesired operation.

2. Changes or modifications not expressly approved by the party responsible for compliance could void the user's authority to operate the equipment.

NOTE: This equipment has been tested and found to comply with the limits for a Class B digital device, pursuant to Part 15 of the FCC Rules. These limits are designed to provide reasonable protection against harmful interference in a residential installation.

This equipment generates uses and can radiate radio frequency energy and, if not installed and used in accordance with the instructions, may cause harmful interference to radio communications.

However, there is no guarantee that interference will not occur in a particular installation. If this equipment does cause harmful interference to radio or television reception, which can be determined by turning the equipment off and on, the user is encouraged to try to correct the interference by one or more of the following measures:

- Reorient or relocate the receiving antenna.

- Increase the separation between the equipment and receiver.

- Connect the equipment into an outlet on a circuit different from that to which the receiver is connected.

- Consult the dealer or an experienced radio/TV technician for help.

## **FCC Radiation Exposure Statement**

This equipment complies with FCC radiation exposure limits set forth for an uncontrolled environment. This equipment should be installed and operated with minimum distance 20cm between the radiator & your body