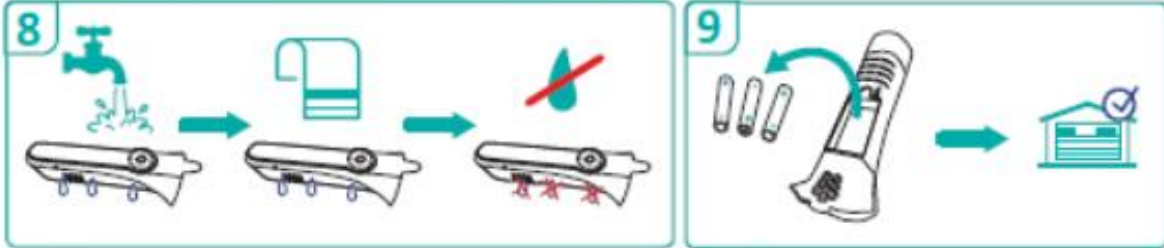
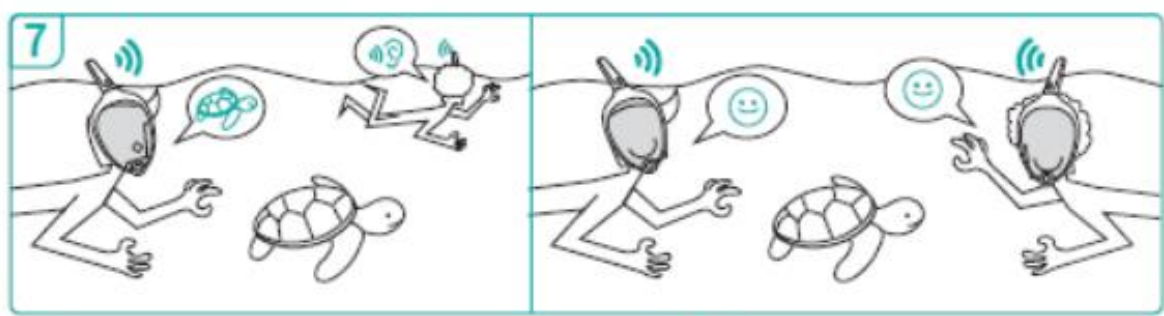
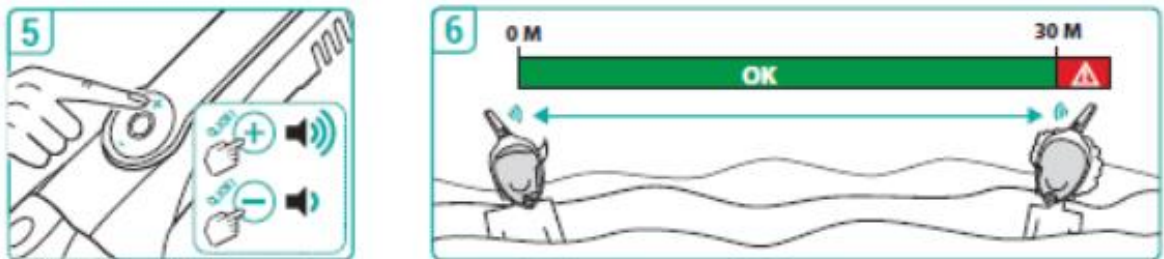
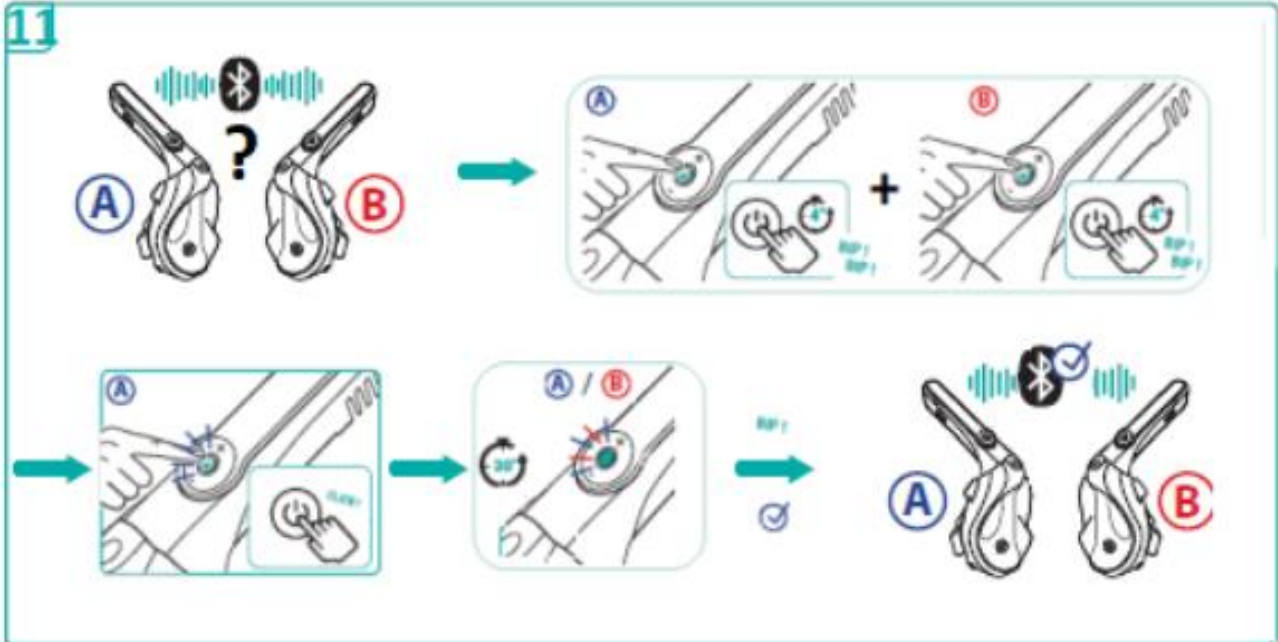


EASYBREATH 500 KITCOM

USER MANUAL







USER MANUAL

1 / Placement of batteries:

To remove the Battery cover, use a suitable coin and turn to the left $\frac{1}{4}$ turn (clockwise).

Place the 3 AA batteries (1.5Volts) according to the indications "+" and "-"

To close the product, press firmly on the battery cover and turn to the right $\frac{1}{4}$ turn (counterclockwise).

Be careful that the 4 tooth of battery cover are well inserted into the snorkel.

2 / Product installation:

Insert the snorkel on the top of the EB 500 mask until the feel the clic of the clip.

To remove the tuba, press the clip firmly before extracting.

3 / Switching on / off:

To switch on: Press and hold (2 seconds) the center button until you hear a beep and see the light turn green.

To switch off: press the center button continuously (2 seconds) until you hear a beep and see the light blink red 3 times.

4 / Communication function:

Put the mask on the head and if necessary readjust the Kitcom sound (see 5 /).

5 / Sound level:

Press the + or - button to readjust the sound. A specific sound signal is emitted when the product is at its minimum / maximum volume.

6 / Distance of use:

The product can be used between 0 and 30 meters. Beyond this distance, the communication quality may be altered or cut off.

7 / Council of use:

For optimal listening, choose the immersed position of the snorkel: the speaker must be placed completely under water.

8 / and 9 / Maintenance tip:

After each use, rinse the product with clean water and dry it with a textile product.

For storage longer than 1 week, remove the batteries from the product.

10 / Repair

If there is a problem with the product, do not attempt to disassemble it and contact an authorized Decathlon center.

11 / Product pairing procedure

The 2 Kitcom contained in the box are already paired.

Please apply this procedure only when you need to use a new Kitcom (after sale product for example)

> For each product to be paired (A and B), press the center button for 4 seconds continuously until you hear a beep and see the light blinking red and blue.

> When the 2 products are flashing, press 1 time (click) on the central button on one of the two Kitcom.

Kitcom flashing should become fast.

> Wait up to 30 seconds for the products to perform the pairing.

> When an audible signal is emitted and each product has the light lit in green, then the pairing process is complete.

> If the pairing is not successful, please repeat the procedure, making sure to turn off each product. Also be careful that no other Kitcom is already lit nearby.

This device complies with part 15 of the FCC Rules. Operation is subject to the following two conditions: (1) This device may not cause harmful interference, and (2) this device must accept any interference received, including interference that may cause undesired operation." CAUTION: changes or modifications not expressly approved by the party responsible for compliance could void the user's authority to operate the equipment. Note: This equipment has been tested and found to comply with the limits for a Class B digital device, pursuant to part 15 of the FCC Rules. These limits are designed to provide reasonable protection against harmful interference in a residential installation. This equipment generates, uses and can radiate radio frequency energy and, if not installed and used in accordance with the instructions, may cause harmful interference to radio communications. However, there is no guarantee that interference will not occur in a particular installation. If this equipment does cause harmful interference to radio or television reception, which can be determined by turning the equipment off and on, the user is encouraged to try to correct the interference by one or more of the following measures: —Reorient or relocate the receiving antenna. —Increase the separation between the equipment and receiver. —Connect the equipment into an outlet on a circuit different from that to which the receiver is connected. —Consult the dealer or an experienced radio/TV technician for help.

changes or modifications not expressly approved by the party responsible for compliance could void the user's authority to operate the equipment.

This equipment complies with FCC radiation exposure limits set forth for an uncontrolled environment. End user must follow the specific operating instructions for satisfying RF exposure compliance. This transmitter must not be co-located or operating in conjunction with any other antenna or transmitter.

The portable device is designed to meet the requirements for exposure to radio waves established by the Federal Communications Commission (USA). These requirements set a SAR limit of 1.6 W/kg averaged over one gram of tissue. The highest SAR value reported under this standard during product certification for use when properly worn on the head.