

# ALVO ROCK Mobile Phone User Guide

FCC ID:A5XALVOROCK

## Table of Contents

<b>1. Security</b> .....	<b>3</b>
<b>2. Getting Started</b> .....	<b>5</b>
2.1. Batteries .....	5
2.1.1. Installing and uninstalling the battery .....	5
2.1.2. Charging the battery .....	5
2.1.3. Using the battery .....	5
2.1.4. Battery level indicator .....	5
2.2. Connecting to the Network .....	5
2.2.1. SIM card .....	5
2.2.2. Installing and uninstalling the SIM card.....	6
2.2.3. Unlock the SIM card .....	6
2.2.4. Connecting to the network.....	6
<b>3. Call Function</b> .....	<b>6</b>
3.1. Phone power on/off .....	6
3.2. Dial.....	6
3.2.1. Dial from the Phonebook .....	7
3.2.2. Unanswered call.....	7
3.3. Answer call.....	7
3.4. During a phone call .....	7
3.5. Emergency service .....	7
<b>4. Explanatory legend</b> .....	<b>8</b>
4.1. Appearance .....	8
4.2. Assembly drawing.....	8
<b>5. Dial</b> .....	<b>9</b>
<b>6. Phonebook</b> .....	<b>9</b>
6.1. Phonebooks of SIM card and your phone .....	9
6.2. Contact list .....	9
6.3. Contact .....	10
6.4. Group and Blacklist .....	10
<b>7. Message</b> .....	<b>10</b>
7.1. Writing messages.....	10
7.1.1. SMS .....	10

7.1.2.	MMS .....	10
7.2.	Inbox.....	10
7.3.	Draft.....	10
7.4.	Outbox .....	11
7.5.	Sent box .....	11
7.6.	Templates.....	11
7.7.	Voicemail .....	11
7.8.	Broadcast message .....	11
7.9.	Setting.....	11
7.10.	Memory Status .....	11
<b>8.</b>	<b>Settings .....</b>	<b>11</b>
8.1.	General settings.....	11
8.1.1.	Personalization .....	11
8.1.2.	Time and date .....	12
8.1.3.	Profiles .....	12
8.1.4.	Power on/off .....	12
8.1.5.	Information.....	12
8.1.6.	Security .....	12
8.1.7.	Restore to factory default .....	12
8.2.	Phone settings.....	12
8.2.1.	Call settings.....	12
8.2.2.	Call divert.....	13
8.2.3.	Call barring .....	13
8.2.4.	Network settings.....	13
8.2.5.	Speed dial .....	13
8.3.	Connection settings.....	13
<b>9.</b>	<b>Calculator .....</b>	<b>13</b>
<b>10.</b>	<b>WAP .....</b>	<b>13</b>
<b>11.</b>	<b>Profiles .....</b>	<b>13</b>
<b>12.</b>	<b>Camcorder .....</b>	<b>13</b>
<b>13.</b>	<b>Camera .....</b>	<b>14</b>
<b>14.</b>	<b>Music .....</b>	<b>14</b>
<b>15.</b>	<b>Video.....</b>	<b>14</b>
<b>16.</b>	<b>King movie.....</b>	<b>14</b>

<b>17.</b>	<b>Photo.....</b>	<b>14</b>
<b>18.</b>	<b>File Manager.....</b>	<b>14</b>
<b>19.</b>	<b>Time .....</b>	<b>14</b>
<b>20.</b>	<b>Call log .....</b>	<b>15</b>
<b>21.</b>	<b>JAVA .....</b>	<b>15</b>
<b>22.</b>	<b>Recorder.....</b>	<b>15</b>
<b>23.</b>	<b>FM .....</b>	<b>15</b>
<b>24.</b>	<b>E-book .....</b>	<b>15</b>
<b>25.</b>	<b>Connect .....</b>	<b>16</b>
<b>26.</b>	<b>Countdown Timer.....</b>	<b>16</b>
<b>27.</b>	<b>World clock .....</b>	<b>16</b>
<b>28.</b>	<b>NOTE .....</b>	<b>16</b>
<b>29.</b>	<b>Flash Light.....</b>	<b>16</b>
<b>30.</b>	<b>Calculator .....</b>	<b>16</b>
<b>31.</b>	<b>Bluetooth .....</b>	<b>16</b>
<b>32.</b>	<b>Alarm.....</b>	<b>16</b>
<b>33.</b>	<b>Stopwatch.....</b>	<b>16</b>
<b>34.</b>	<b>Converter .....</b>	<b>16</b>
<b>35.</b>	<b>TV .....</b>	<b>16</b>

### **Notice to Manufacturers**

This user guide is for reference only and may not be fully matched to the actual product. Mobile product manufactures should prepare another document based on their own specifications.

## General Information

Thank you for selecting our GSM/GPRS mobile phone. This user guide will provide you with the general information and operation instructions.

### 1. Security

#### Emergency call

In any country, you can dial 112 (or other emergency call number) for emergency help.

#### Note:

- Based on the nature of cellular networking, the success of the emergency call cannot be guaranteed.

#### For your safety

- Switch off the phone in hospitals and aircraft. Obey any restrictions. Wireless devices can affect the medical treatment and cause interference in aircraft.
- Some medical devices such as hearing aids and pacemaker may be sensitive to external radio frequency emissions. Consult the device manufacturers or your doctor before using the phone around the medical devices.
- Pay special attention to the ring tone volume and vibration settings if you have a heart problem.
- In areas with potentially explosive atmosphere, such as gas stations, fuel or chemical transfer or storage facilities, obey all signs and instructions.
- Your phone will emit radio frequency even in the standby mode. Turn off your phone when so instructed.
- Always obey all the local laws and regulations. Do not use your phone while driving. Use Hands-free operation, if available, and give full attention to driving and to the road. Pull off the road and park before making or answering a call if driving conditions so require.
- If your phone is lost or stolen, notify your service provider immediately to stop the SIM card from being used.

- When you contact your service provider, they will need your IMEI number. It is printed on the back of your phone set (you can find it when you remove your battery), or call \*#06# to look up your IMEI number. Copy this number and save it for future need.
- To prevent your phone from misuse, lock your SIM card or phone, and change passwords when necessary.
- Do not remove the battery without tuning off the phone. Failure to follow this instruction may result in data lost.
- When you leave your vehicle, take the phone with you or place it in the glove compartment to avoid theft.
- Keep the phone, battery or charger out of reach of children.

#### Notices for your phone use

- Do not keep the phone near magcards and other object with magnetism. The phone's magnetism may clear the information stored on floppy disk, pre-paid phone card and credit card.
- Use the phone near land phone, television, radio and office automatic devices may cause interference and affect the function of the mobile phone.
- Keep the phone dry, all kinds of liquid can erode the electronic circuit.
- Keep the phone away from extreme temperatures.
- Keep the phone away from hot places where the temperature may exceed 50°C, such as the dash board, windowsill, near fire or a lighted cigarette.
- Do not paint the phone.
- Do not drop the phone or violently crush or shake the phone.
- Do not disassemble or modify your phone. This can damage the phone, cause leakage and break the internal circuit.
- Use only damp cloth or non-static cloth to clean your phone. Do not use alcohol, thinner, benzene or other chemicals or abrasive cleaner to clean your phone.
- The phone will become warm under normal use and while in battery charging.
- Do not leave the phone with battery uninstalled or with the battery

empty for a long period of time. This may cause data loss.

- The metal parts of the phone may irritate your skin depending on your health condition.
- Do not put the phone in the back pocket. Sitting on it may damage the phone. Do not put the phone on the bottom of a bag. You may crush it.
- When the vibrate mode is on, place the phone carefully to avoid it being dropped from a height or being moved to a heat source due to the vibrating.
- Use only the stylus approved by the phone manufacturer. Do not press the touch screen with needles, pen point or other sharp objects, otherwise it can damage the LCD and violate the terms of the warranty.
- Handle the stylus with care. Place it back to its proper storing place when not in use. Keep it away from children.

#### **Notice for batteries use**

- Do not disassemble or modify your batteries, otherwise it can cause leakage, over heat, fire or explosion.
- Disposing battery in a fire can cause fire or explosion. Old batteries should be returned to your dealer or be disposed according to local regulations. Do not dispose the battery as household waste.
- Do not short the circuit of the battery with wires, needles or other metal objects, or store the batteries with necklace or other metal objects, otherwise it can cause leakage, over heat, fire or explosion.
- There is a risk of blinding if the liquid of the batteries gets into your eyes. In case of this, do not rub your eyes, you should rinse your eyes well with fresh water and go to the hospital immediately.
- If the leaked liquid of the battery touches the skin, it can burn the skin. Please wash your skin with fresh water and go to the hospital immediately.
- Never put the battery in your mouth. The liquid of the battery can be toxic.
- Stop using the battery when you find it became hotter, and change color and shape abnormally during use, charging or storing.
- Keep the batteries dry.

- Do not use or store batteries near fire, heater and other place with high temperature, otherwise it can result in leakage, over heat, fire or explosion. Store the battery in a cool and ventilated place without direct sun light.
- Do not charge the battery for more than 24 hours.
- The battery can be charged and discharged for hundreds of times but it will eventually wear out. The battery life is shortened with each charging.
- When replacing the battery, use only the batteries approved by the phone manufacturer. Damage resulting from using un-authorized batteries will not be covered by warranty.

#### **Traffic safety**

- Do not use your phone when driving a vehicle. Give full attention to driving and to the road. Provided there is an emergency, stop your vehicle in a safe place and then use your phone. Please obey all the local traffic laws and regulations.
- Normally the electronic systems in the vehicle should not be affected by the RF (Radio Frequency) signals from your wireless phone. However if you suspect any damage is resulting from the RF of your phone, contact your car dealer. Stop using your phone in the car until a qualified technician clears the problem.
- Only qualified technician can install your phone in your vehicle.
- If your vehicle is equipped with an air bag, do not place the phone above the air bag, or in the air bag deployment area. If in-vehicle wireless equipment is improperly stored or installed and the air bag inflates, serious injury could result.
- Turn off your phone when in the gas station or any place where using wireless equipment is prohibited. Do not place or transport your phone with inflammables or explosives, the internal sparkle may cause fire.

#### **Airplane safety**

- Power off your phone before boarding, the use of a wireless phone in an airplane will be dangerous to the operation of the airplane and disrupt

the wireless telephone network and maybe illegal. Failure to observe these instructions may lead to law suit or denial of GSM cellular network service to the offender.

- Should there be an emergency situation, contact crew member.

## 2. Getting Started

### 2.1. Batteries

The battery is included in the package. It is not fully charged out of factory but it may still be able to power on your phone. Please completely use up the power of the battery and then charge it for at least 12 hours with your phone turned off. Your battery will reach its optimal state after three cycles of charge and discharge.

#### 2.1.1. Installing and uninstalling the battery

To install the battery, remove the back cover from the phone by pressing firmly on the cover and slide it down. Align the golden contacts of the battery to the contacts in the phone, and then gently snap down the battery into place. Re-assemble the back cover.

To uninstall the battery, flip the battery out from the bottom of the battery.

#### 2.1.2. Charging the battery

Plug the charger into the socket on the side of your phone. Connect the charger to an AC wall socket. The blinking of the battery level icon indicates the battery is being charged. When the blinking stops, it indicates the charging is finished.

During charging, the phone and charger will feel warm to the touch. This is normal.

#### **Warning:**

- The operating ambient temperature of the charger is -10°C to 50°C. Do not

use it when the temperature exceeds this limit.

- Use only chargers approved by the phone manufacturer to ensure safety. Failing to comply with this will violate the terms and conditions of the warranty.

#### 2.1.3. Using the battery

The waiting time and calling time capacities specified by the phone manufacturer are obtained under the ideal operating environment. The actual values will vary with the network condition, operating environment and operation method.

Please comply with the local regulations of disposing the battery (such as recycling). Do not dispose it as household waste.

#### 2.1.4. Battery level indicator

When the phone is on, the battery level indicator is located at the upper right corner of the screen.

## 2.2. Connecting to the Network

### 2.2.1. SIM card

Please insert available Subscriber Identity Module (SIM) card into your phone before using it. SIM card is supplied by your network carrier.

All the information related to network connection is recorded on the SIM card, so are the contact information such as names, phone numbers and SMSs that you set to store on the SIM. You can take out the SIM card from the phone and insert it into another GSM phone to use it. Most new phones will recognize the SIM card automatically.

Do not touch the golden contacts of the SIM card and place it away from electricity and magnetism to avoid damage. You will not be able to use the phone if the SIM card is damaged.

**Note:**

- Before inserting and taking out the SIM card, always make sure that the phone is switched off and disconnected from any external power source; otherwise both the phone and the SIM card may be damaged.

**2.2.2. Installing and uninstalling the SIM card**

The SIM card usually comes attached to a special card. The metal contacts of SIM card is easily damaged by scratching, so take it out carefully before assembling it into the phone.

Switch off the phone, remove the back cover, battery and other external power source. Fit the SIM card into the SIM card slot. Align the angled corner of the SIM card with the slot. Slide in the SIM card, make sure it is in place, install the battery, and restore the back cover.

Likewise, to remove the SIM card, switch off the phone, remove the battery and then take out the SIM card.

**2.2.3. Unlock the SIM card****PIN code**

Your Personal Identification Number (PIN) code protects the SIM card against unauthorized use. Your PIN code is usually supplied with the SIM card. If this security function is enabled, you need to enter the PIN code every time you turn on the phone. You can also disable this function.

To unlock the SIM card, press and hold the power button to turn on the phone. Enter the PIN code. After three consecutive incorrect PIN code entries, the code is blocked, and you need the PUK code to unblock it.

**PUK code**

This code is required to change a locked PIN code. If the code is not supplied with the SIM card, contact your service provider. After ten consecutive incorrect PUK code entries, the SIM card can not be used any

more. Please contact your service provider to buy a new SIM card. You can not edit PUK code. If it is lost, Please contact your service provider.

**2.2.4. Connecting to the network**

After the SIM card is unlocked, you phone will automatically search for the registered network or other local available network. Once connected, the name of the network carrier will appear on the top of the screen.

You phone is now in Standby mode, ready for making and receiving calls.

**3. Call Function**

After the setup described in the previous sections is completed, you are ready to make and receive calls using the basic information provided in this section.

**Note:**

- When you are using headset, please plug/unplug the headset gently to avoid damaging the headset jack.

**3.1. Phone power on/off****Power on**

Press and hold **power** to turn on the phone. If PIN code is required, please refer to the previous section in this guide.

**Power off**

In Standby mode, press **power** key to enter the Power-off screen (shown below).

**3.2. Dial**

When the network carrier is shown on the screen, your phone has entered the Standby mode and you may make or receive calls. If you have installed two SIM cards, the two network carriers will both appear on the screen.

### 3.2.1. Dial from the Phonebook

Enter Phonebook from the Main Menu. You may use alphabet, Pinyin or Chinese Surname Index for quick search of the names.

### 3.2.2. Unanswered call

If you have set up Auto Re-dial, your phone will automatically re-dial the last number that you called but unanswered.

### 3.3. Answer call

When there's an incoming call, the phone will notify you through vibration, ringing, vibration plus ringing, etc. The name and phone number of the caller is shown on the screen if the network supports the service. You may answer or reject the call.

If call waiting is on, (You need to apply for this service to your network carrier.) when you are on the phone and there is another incoming call, your phone will notify you with a short tone. You may answer or reject that second call. If you choose to answer the second call, the current call will be on hold.

### 3.4. During a phone call

When you are on the phone, the following functions can be used:

#### Note:

- The functions vary with the SIM card.

**Speakerphone:** Speakerphone

**Mute:** The microphone is turned off and the person you are calling will not hear your voice.

**Hold:** The current call is on hold and both you and the person you are calling will not hear each other. When the call is on hold, you may pick it up again or end the call through the Options menu.

**End:** End the current call.

**Volume:** Adjust the volume of the speaker or headset.

**Touch Tone:** Turn on/off the touch tone.

**Record:** Record the phone conversation.

**Phonebook:** Enter the phonebook and do the related operations. This function is convenient for searching phone numbers during a phone call.

**Message:** Enter the message screen and do the related functions.

You may enter Dial or Phonebook screens to make a new phone call while the current phone call is still on-going.

#### Note:

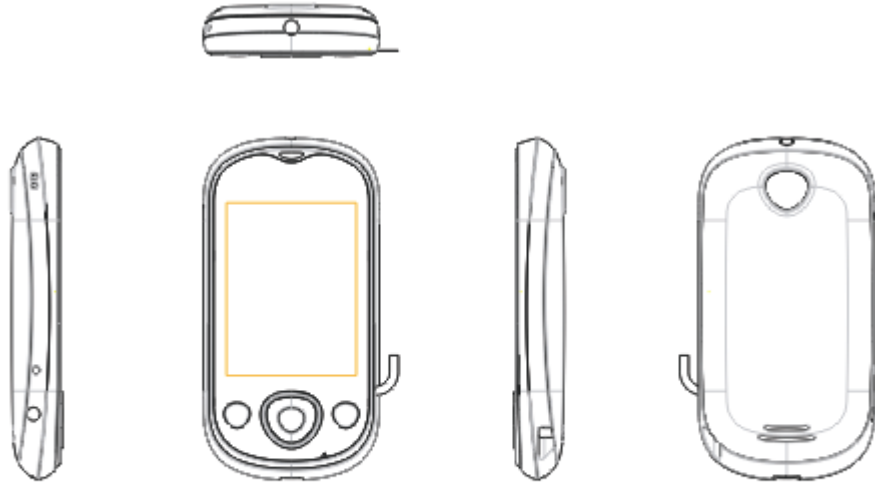
- In the dual card mode, if one card is in use, the other card is under no-service state.

### 3.5. Emergency service

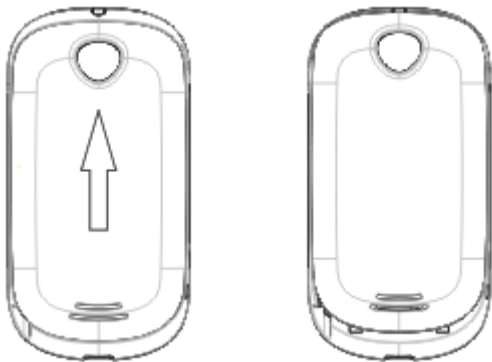
In any GSM network system, if you are in the region covered by the network, you should be able to use the emergency service even without a SIM card.

## 4. Explanatory legend

### 4.1. Appearance



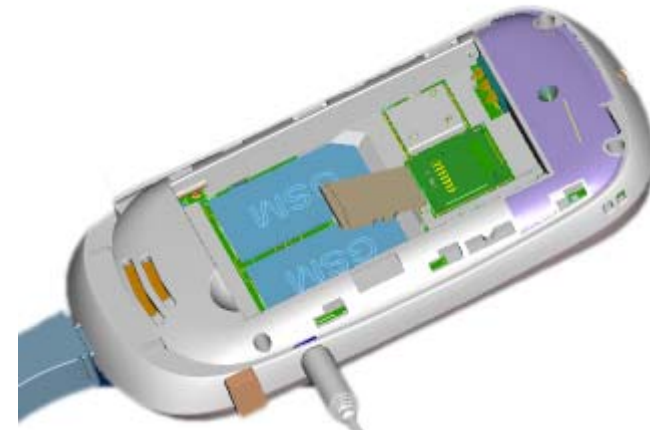
### 4.2. Assembly drawing



(1)

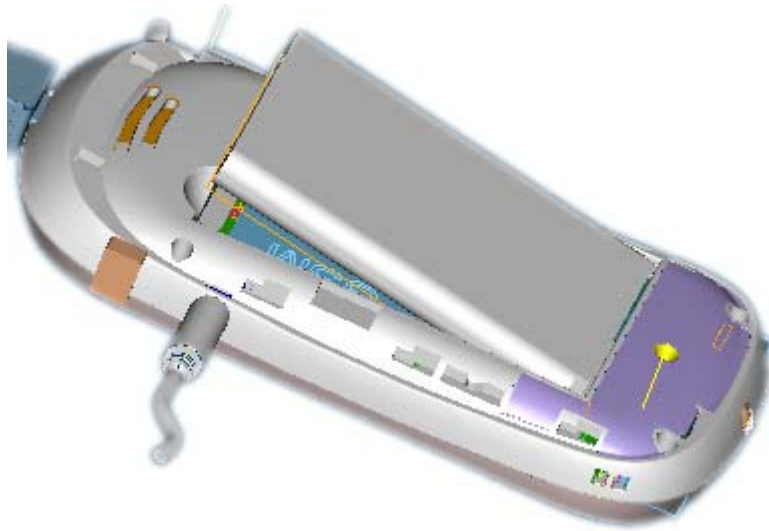


(2)



(4)





(3)



(5)

## 5. Dial

You can call for a number or save it directly and you can also send a message to it.

## 6. Phonebook

This chapter describes the functions of the phonebook. You can use alphabet, Pinyin or Chinese Surname Index methods for quick search of your contacts.

### 6.1. Phonebooks of SIM card and your phone

There are two separate phonebooks, one stored on the SIM card and the other in the phone.

Each entry in your SIM card's phonebook consists of a phone number and a name. When you change to another phone, the contact information can be transferred to your new phone with the SIM card. The total number of entries allowed in the SIM card varies with the different SIM cards.

The contact stored in the phone can include name, cell phone number, home, office numbers, others, group, photo, ring tone, company name, division name, title, email address, website and notebook. This information will not be transferred with the SIM card to your new phone.

### 6.2. Contact list

The contact list is arranged in alphabetical order. You have the following options: View, Dial, IP calling, Send, New, Delete, Mark, Copy to SIM card/phone, Assign to group, vCard, Fixed Dial, and Memory Details.

**View:** View the contact information.

**Dial:** Dial the current number

**IP calling:** Dial the current number with IP number.

**Send:** Send SMS or MMS to the number.

**New:** Create a new contact.

**Delete:** Delete selected entry

**Mark:** Activate Mark/Unmark mode to mark the selected contact for further operation.

**Copy to SIM card/phone:** Copy the selected entry to SIM card or phone.

**Note:**

- If the entry stored in the phone has multiple information, when copying it to SIM card, the information will be separated into multiple entries.
- In the dual card mode, the copy function only apply to the default card.

**Assign to Group:** Contacts saved on the phone can be assigned to some specific groups or Blacklists.

**vCard:** Send or export by vCard format.

**Memory Details:** Display the storage status.

### 6.3. Contact

From the contact list you can select a contact and do the following: Dial, IP calling, Send, Edit, Delete, Set up head shot, set up ring tone, assign to group.

**Edit:** Edit the contact details

**Set up head shot:** Set up a headshot for the contact

**Set up ring tone:** Assign an individual ring tone to the contact

### 6.4. Group and Blacklist

You may set up various groups to categorize your contacts. You may also put contacts into the Blacklist to block all their calls and messages.

## 7. Message

This chapter introduces the message services provided by the GSM network. Some services may not be supported by the local network.

### 7.1. Writing messages

#### 7.1.1. SMS

Enter the SMS editor screen. You may input Chinese, English, digits and punctuation marks. After writing the text message, you have the follow options:

**Send:** Send the message

**New Recipient:** Add new recipient

**Save:** Save to Draft box

**Insert:** Insert pictures, voice, video, template, vCard or vCalendar.

**Convert to MMS:** Convert this SMS to MMS.

**Send Options:** Enter the SMS setup screen to set up service center number, send mode, expiration date, SMS send format, sent log, and direct reply options

**Input Method:** Insert symbols, copy or paste contents, switch input method or language.

#### 7.1.2. MMS

The MMS function allows you to send text and multimedia such as pictures, voice and video to the other phone. After creating the message, you have the follow options:

**Send:** Send the message

**New Recipient:** Add new recipient

**Insert:** Insert Template, vCard, vCalendar, picture, voice or video

**Insert page:** Insert a new page before or after the current page

**Preview:** Preview the current MMS

**Convert to SMS:** Convert this MMS to SMS

**Save:** Save to Draft box

**Page setup:** Set the playback time, text positions and picture size

### 7.2. Inbox

The Inbox lists the received SMS and MMS. You have the following options: Read, write SMS/MMS, Reply, Delete, Delete all, Copy to phone/SIM, Mark and Details.

### 7.3. Draft

Saved messages and unsent message are saved here. Options are Read, write message, Delete, Delete all, Copy to SIM, Mark and Detail.

After you select to read a message, you will enter the message editor.

#### **7.4. Outbox**

The out-going messages are listed here. Your options include: Read, Delete, Delete all, Move to, Mark and Details.

After you select to read a message, you have the following options: Forward, Delete, and Detail.

#### **7.5. Sent box**

Sent messages are saved here. Your options include: Read, write message, Delete, Copy to SIM card, Mark and Details.

After you select to read a message, you have the following options: Forward, Delete, Call Receiver, IP Dial, Save to SIM card, and Detail.

#### **7.6. Templates**

You can preset frequently used sentences here to avoid repeated input when writing a message.

#### **7.7. Voicemail**

Voicemail messages are stored on the network. You can listen to your voicemail messages by calling your network voicemail phone number. You will be asked to enter your mailbox number when you use it for the first time.

#### **7.8. Broadcast message**

Look up the broadcast messages.

#### **7.9. Setting**

You can adjust the various settings of the message functions including SMS, MMS, Broadcast and Voicemail.

#### **7.10. Memory Status**

This screen shows the storage status of SMS and the free space of your SIM card and your phone.

### **8. Settings**

Enter Settings form the Main Menu. There are General, Phone and Connection Settings.

#### **Note:**

- If only one SIM card is installed, your phone will automatically hide the dual card related settings.

#### **8.1. General settings**

##### **8.1.1. Personalization**

Personal settings include Display, Standby screen, ringtone and language.

#### **Display**

**Main menu style:** tile or list

**Backlight:** Set the brightness of backlight and time.

#### **Standby mode**

Set the wallpaper and arrow key shortcuts.

#### **Ringtone settings**

You can set Vibrate, Volume, incoming call tone, Power on tone, Power off tone, Message, Calendar, Alarm, Missed event reminder tone, Keypad tone.

#### **Display language**

Set editor language, default input method and keyboard language.

This phone provides 10 languages including English, Simplified Chinese and more.

The editor settings vary with different languages. When the language is set to Chinese, you have the options to set the default input method: simplified Chinese stroke method, simplified Chinese Pinyin method, and English alphabet. When the language is set to another language, the input methods may be intelligent input method, keypad method, etc.

### **8.1.2. Time and date**

You can set the time, date, time zone, date format, date format, summer saving time, and lunar calendar.

### **8.1.3. Profiles**

Profile settings include Normal, Meeting, Outdoor, Silent, Customize and Headset.

### **8.1.4. Power on/off**

You can set the time and condition for the phone to automatically power on/off itself.

### **8.1.5. Information**

You can look up your phone ID, built-in messages and software version.

### **8.1.6. Security**

You can set Phone lock, SIM lock, and Auto keypad lock here.

**PIN code:** Change PIN1 and PIN2 passwords. You need to have the default Pin numbers from the network carrier.

**Phone lock:** Turn the phone lock on/off and edit your phone password. The default is 0000.

**SIM lock:** Allow you to check the SIM card lock status and change password.

**Auto keypad lock:** You can lock your phone manually, or select auto lock for the phone to lock its screen and keypad automatically after some idle time in the Standby mode.

### **8.1.7. Restore to factory default**

Restore you phone to the factory or default settings through this option. You need to input your phone password (default is 0000) for this operation. All data will be deleted when your phone is restored to its factory settings.

## **8.2. Phone settings**

### **8.2.1. Call settings**

#### **Call waiting**

You can turn the call waiting on/off and look up the current status. When the call waiting is turned off and your phone is busy, all other incoming calls will hear the busy ring tone.

#### **Caller identity**

You can set whether or not to send your phone number with out-going calls.

#### **Any key answer**

You can set whether or not to use any key to answer the phone.

#### **Minute Reminder**

You can set the duration of the call for the phone to remind you when the time is reached.

#### **Auto redial**

You can set whether or not to auto redial the number last called that was unanswered.

#### **Auto answer**

Set the auto answer on or off.

#### **Answer reminder**

Off, ring tone, vibrate, and blinking screen.

#### **Cost setting**

Set the currency, unit cost and quota.

### **IP number**

Set your IP number here. When it is set, you can use IP dialing through the Option menu of the Phonebook.

### **User group**

Set user groups.

#### **8.2.2. Call divert**

Set the divert methods for the following different types of calls: all, voicemail, data, fax. The divert methods are: divert all, when busy, when no answer, when no service, when power-off, cancel all divert.

#### **8.2.3. Call barring**

Set the block methods for the following different types of calls: all, voicemail, data, fax and SMS. Block options are: all outgoing, international outgoing, international outgoing while abroad, all incoming, incoming while abroad, cancel all barring, change password.

#### **8.2.4. Network settings**

You can set your priority network, carrier, and airplane mode.

#### **8.2.5. Speed dial**

Set fast dial numbers. When the number is set, you can simply press the single number key and then the dial key for a fast dial.

### **8.3. Connection settings**

You can set Modem account, WAP account, MMS settings and LBS settings.

## **9. Calculator**

A basic calculator is provided.

## **10. WAP**

You may browse WAP websites. Make sure you have enabled GPRS or EDGE network.

## **11. Profiles**

Six Profiles are available: General Mode, Meeting Mode, Outdoor Mode, Silent Mode, Personal Mode, and Headset Mode. You can select any of these Profiles or customize your own profile by adjusting the parameters of the Profile. Restore to default settings by using the Restore option.

## **12. Camcorder**

Before using Camcorder, make sure you have inserted a memory card. The video will be saved in 3GP format to your memory card.

After entering the Camcorder, the Camcorder Preview screen will appear with status icons. Press **OK** to start recording videos.

Camcorder settings include:

**Video size:** CIF (352x288), QCIF (176x144)

**Video quality:** Normal, High, Low

**Night mode:** On, Off

**Effect:** Normal, Mono, Sepia, Negative, Sketch, Oil painting, Emboss, Mosaic, Zipper, Blur

**White balance:** Auto, Cloud, Daylight, Fluorescent, Incandescence

**Banding:** 50Hz, 60Hz

**Sound:** On, Off

**File Size Limit:** No limit, for MMS

**Recording Time Limit:** No limit, 15 sec, 30 sec, 60 sec

**EV:** -2, -1, 0, 1, 2

## 13. Camera

Before using Camera, make sure you have inserted a memory card. The photos will be saved in JPEG format to your memory card.

### **Note:**

➤ Taking pictures in dim lighting may result in poor picture quality.

After entering the Camera, the Camera Preview screen will appear with the status icons. Press **OK** to take the picture.

Camera settings include:

**Image size:** For contact head shot, Wallpaper

**Image quality:** Normal, High, Low

**Night mode:** On, Off

**Effect:** Normal, Mono, Sepia, Negative, Sketch, Oil painting, Emboss, Mosaic, Zipper, Blur

**Continues:** 4, 6, 9, Off

**Countdown:** 5 seconds, 10 seconds, 15 seconds, Off

**White balance:** Auto, Cloud, Daylight, Fluorescent, Incandescence

**Banding:** 50Hz, 60Hz

**Sound:** On, Off

**EV:** -2, -1, 0, 1, 2

## 14. Music

Upon entering the Music Player, Playlist will be displayed. Through All Music you can look up all the music files. Other Options are: View, New playlist, Rename, Delete, Repeat, Shuffle, Equalizer, 3D surround, Show lyrics and Set cover.

After you have selected music from the Playlist, you will enter the Music Player screen and you can look up the album, name of the song, artist, play time, item number, etc.

The following operations can also be done by selecting the corresponding

menu item: Play/Pause, Stop, Repeat, Shuffle, Equalizer, 3D surround, Show lyrics, Song info, and Details..

## 15. Video

Enter the Video Player and the Video file list is displayed. Several functions are available by Options menu: Stop/Play, Full screen, Send, Delete, Details.

## 16. King movie

In this you can broadcast KVM the form the video frequency document, and the video frequency documents can be Classified by matter when refresh the list.

## 17. Photo

Upon entering the Photo Album, the photos are listed as thumbnails.

Several functions are available by Options menu:

**View:** Preview the selected image.

**Set as:** Set as Wallpaper or Contact head shot

**Send:** Send by MMS or Bluetooth

**Rename:** Rename the selected image

**Delete:** Delete the selected image

**Mark:** Mark the selected image or all images

**Slideshow:** Display by slideshow

**View detail:** Look up the name, file type, size, date, and stored place

## 18. File Manager

The File Manager lists the all the files stored in your phone or memory card

## 19. Time

You can set the time.

## 20. Call log

Call history function logs all recent calls including missed calls, dialed calls and answered calls. Options are:

**View:** View the call log

**Dial:** Dial the selected number

**IP dialing:** Dial the selected number with IP number

**Send:** Send SMS or MMS to the selected number.

**Save:** Save the selected number to SIM or phone.

**Delete:** Delete selected entry

**Delete all:** Delete all entries, all entries of Card 1 or all entries of Card 2

**Call time:** Last Call Time, Total Sent, Total Received, Total Timing Reset (phone password is required)

**Call cost:** Calculate the call cost according to the call time

### Note:

Refer to the Settings chapter for the phone password setup.

You can install and run some procedures of ".jar"

## 21. JAVA

You can install and run some procedures of ".jar"

## 22. Recorder

Enter the recorder function, Press **OK** to start recording, and press **OK** to stop. The memo can be played back immediately or using Option menu to do the following functions:

**New:** Start a new recording

**Send:** Send by MMS or Bluetooth

**Set as:** Set as ring tone, individual contact ring tone, alarm sound

**Rename:** Rename the recording

**Delete:** Delete the recording

**View:** Look up the list of recordings

## 23. FM

Please make sure the headset, which is used as the antenna, is plugged in before using the FM radio.

Functions are also available via the Options menu:

**Radio off (on):** Turn the FM radio off/on

**My channel:** Edit My channel. You can set up to 9 favorite channels.

**Add to my channel:** Add current channel to My channel

**Manual input:** Switch to your desired channel by manual input of the radio frequency

**Background play:** On, Off

**Speakerphone:** On, Off

In the My Channel option, you can play, edit, delete and delete all

## 24. E-book

The e-Book function lists the e-Books in TXT format stored in your memory card. On the bottom of the screen, the size and the number of rows of the selected e-Book are displayed.

Press **SL** to open the Option menu:

**Browse:** Open the e-Book

**Delete:** Delete the current e-Book

**Delete all:** Delete all e-Books

**Scroll format:** There are four options, one row at a time, three rows at a time, six rows at a time and one page at a time.

**Coding format:** Simplified Chinese, ASCII, UCS2, UTF8, Traditional Chinese

**File:** Display the name, size and format of the selected e-Book

After you open an e-Book, you can slide the touch screen to scroll up or down the page. You can also press **SL** to open the menu for the following functions:

**Full screen:** You can also press OK to toggle Full screen and normal browsing mode.

**My bookmark:** You can add a bookmark to the current page, or go to the page marked previously and continue reading from there.

**Scroll format:** There are four options, one row at a time, three rows at a time, six rows at a time and one page at a time.

**Coding format:** Auto, Simplified Chinese (GB2312), UCS2

**Note:**

- You must install a corresponding data package to your T card to use this function.

## 25. Connect

You can set Modem account, WAP account, MMS settings and LBS settings

## 26. Countdown Timer

Countdown timer is provided

## 27. World clock

World clock is provided with a world map. The local time of the city on the map is displayed.

## 28. NOTE

By this you can record something in your life.

## 29. Flash Light

.

## 30. Calculator

A basic calculator is provided.

## 31. Bluetooth

You may do functions for your Bluetooth settings such as: Turn on/off, Paired devices, Search devices, Settings.

## 32. Alarm

You can set up to 6 alarm clocks. The Alarm Clock settings include: Title, Time, Status, Frequency and Ringtone. The frequency settings are: Once, Daily, Monday, Tuesday, Wednesday, Thursday, Friday, Saturday and Sunday. The Alarm Clock function is on even when the phone is powered off.

Alarm Dialog will be displayed when the alarm goes off. You can stop the alarm or snooze for 5 minutes.

## 33. Stopwatch

Stopwatch provides 20 sets of entries with both total and lap timer functions.

## 34. Converter

The Unit Converter can help you convert Currency, Energy, Speed, Mass, Area, Volume, Power, Time, Pressure, Length, Temperature, and Date (western and lunar calendar).

## 35. TV

This phone Built-in analog TV module, you can be anywhere in the signal coverage of the area to enjoy your favorite TV shows. Enter the options menu to choose from the following



**FCC RF EXPOSURE INFORMATION:**

**WARNING!! Read this information before using your phone**

In August 1986 the Federal Communications Commission (FCC) of the United States with its action in Report and Order FCC A5XALVOROCK adopted an updated safety standard for human exposure to radio frequency (RF) electromagnetic energy emitted by FCC regulated transmitters. Those guidelines are consistent with the safety standard previously set by both U.S. and international standards bodies. The design of this phone complies with the FCC guidelines and these international standards. Use only the supplied or an approved antenna. Unauthorized antennas modifications, or attachments could impair call quality, damage the phone, or result in violation of FCC regulations. Do not use the phone with a damaged antenna. If a damaged antenna comes into contact with the skin, a minor burn may result. Please contact your local dealer for replacement antenna.

**BODY-WORN OPERATION:**

This device was tested for typical body-worn operations with the back of the phone kept 1.5cm from the body. To comply with FCC RF exposure requirements, a minimum separation distance of 1.5cm must be maintained between the user's body and the back of the phone, including the antenna, whether extended or retracted. Third-party belt-clips, holsters and similar accessories containing metallic components shall not be used.

Body-worn accessories

that cannot maintain 1.5cm separation distance between the user's body and the back of the phone, and have not been tested for typical body-worn operations may not comply with FCC RF exposure limits and should be avoided.

For more information about RF exposure, please visit the FCC website at [www.fcc.gov](http://www.fcc.gov)

Your wireless handheld portable telephone is a low power radio transmitter and receiver. When it is ON, it receives and also sends out radio frequency (RF) signals. In August, 1996, the Federal

Communications Commissions (FCC) adopted RF exposure guidelines with safety levels for hand-held wireless phones. Those guidelines are consistent with the safety standards previously set by both U.S. and international standards bodies:

<ANSI C95.1> (1992) / <NCRP Report 86> (1986) / <ICMIRP> (1996)

Those standards were based on comprehensive and periodic evaluations of the relevant scientific literature. For example, over 120 scientists, engineers, and physicians from universities, government health agencies, and industry reviewed the available body of research to develop the ANSI Standard (C95.1). Nevertheless, we recommend that you use a hands-free kit with your phone (such as an earpiece or headset) to avoid potential exposure to RF energy. The design of your phone complies with the FCC guidelines (and those standards).

Use only the supplied or an approved replacement antenna. Unauthorized antennas, modifications, or attachments could damage the phone and may violate FCC regulations.

**NORMAL POSITION:**

Hold the phone as you would any other telephone with the antenna pointed up and over your shoulder.

**TIPS ON EFFICIENT OPERATION:**

For your phone to operate most efficiently:

- Extend your antenna fully.
- Do not touch the antenna unnecessarily when the phone is in use. Contact with the antenna affects call quality and may cause the phone to operate at a higher power level than otherwise needed.

## RF Exposure Information:

FCC RF Exposure requirements: The highest SAR value reported under this standard during product certification for use next to the body with the minimum separation distance of 1.5cm is **0.709W/kg**, next to the head is **0.808W/kg**. This transmitter must not be collocated or operating in conjunction with any other antenna or transmitter.

This device complies with part 15 of the FCC rules. Operation is subject to the following two conditions:

- (1) this device may not cause harmful interference, and
- (2) this device must accept any interference received, including interference that may cause undesired operation.

NOTE: The manufacturer is not responsible for any radio or TV interference caused by unauthorized modifications to this equipment. Such modifications could void the user's authority to operate the equipment.

NOTE: This equipment has been tested and found to comply with the limits for a Class B digital device, pursuant to part 15 of the FCC Rules. These limits are designed to provide reasonable protection against harmful interference in a residential installation. This equipment generates uses and can radiate radio frequency energy and, if not installed and used in accordance with the instructions, may cause harmful interference to radio communications. However, there is no guarantee that interference will not occur in a particular installation. If

this equipment does cause harmful interference to radio or television reception, which can be determined by turning the equipment off and on, the user is encouraged to try to correct the interference by one or more of the following measures:

- Reorient or relocate the receiving antenna.
- Increase the separation between the equipment and receiver.
- Connect the equipment into an outlet on a circuit different from that to which the receiver is connected.
- Consult the dealer or an experienced radio/TV technician for help

Do not use the device with the environment which below minimum -10 °C or maximum over 50°C, the device may not work.

Changes or modifications to this unit not expressly approved by the party responsible for compliance could void the user's authority to operate the equipment.