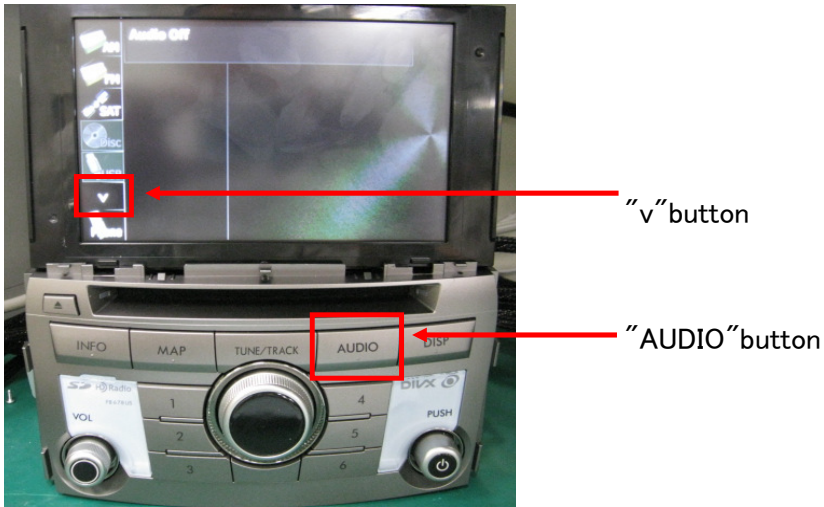
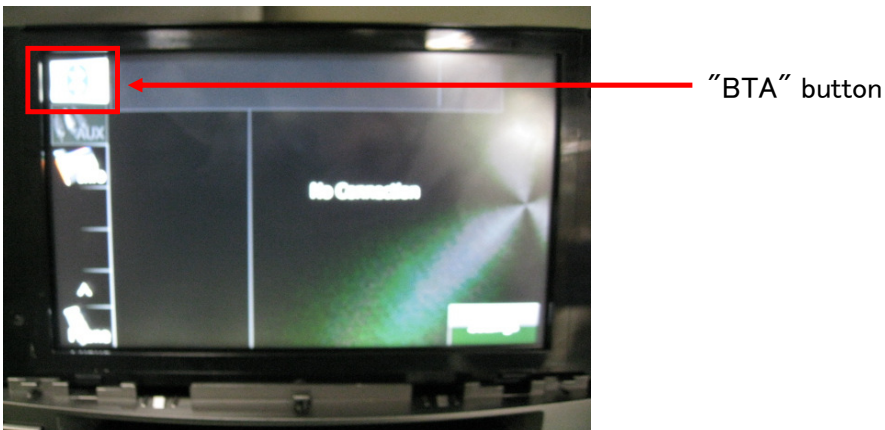


[2]-1 Connecting Bluetooth

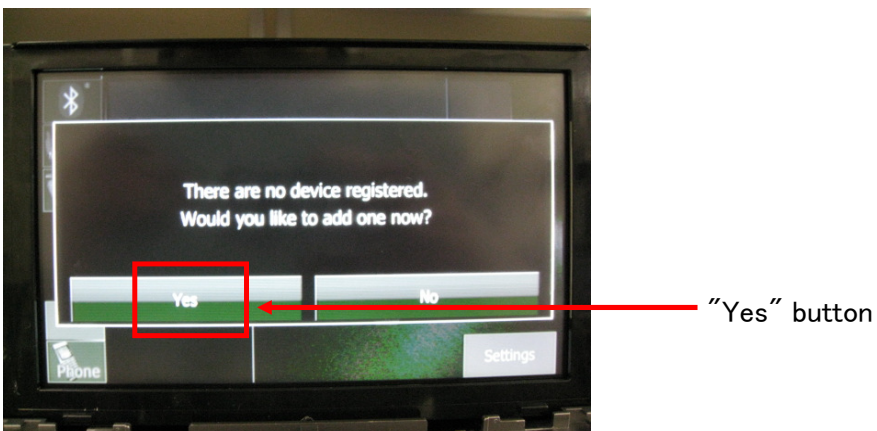
1. Please push the "AUDIO" button.
2. Please push the "v" button on the screen.



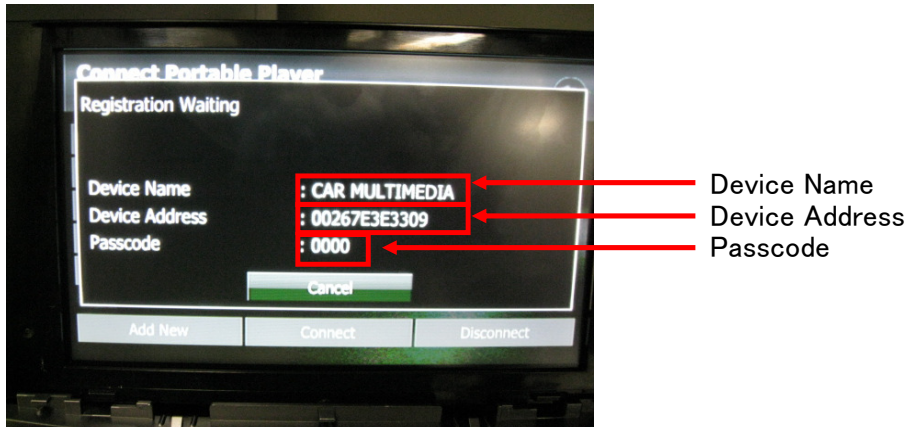
3. Please push the "BTA" button on the screen.



4. Please push the "Yes" button on the screen.



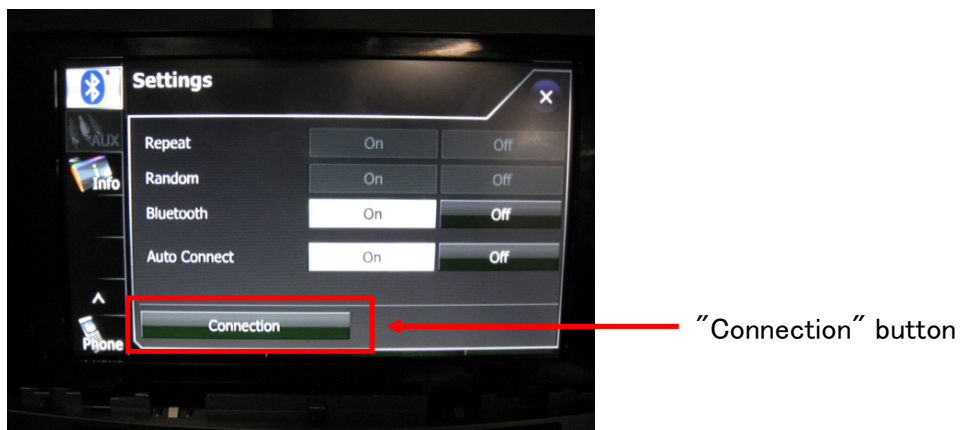
5. Please wait for a moment.



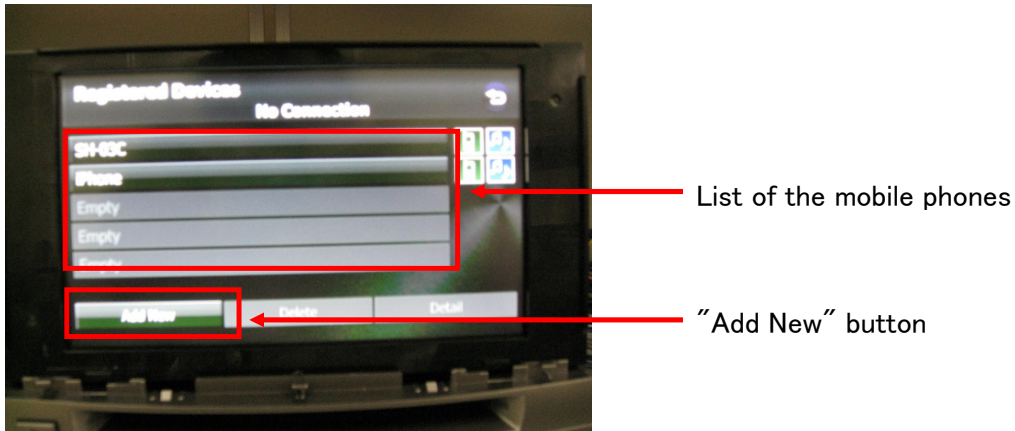
- [2]-2 If once your mobile phone are connected
1. Please push the "AUDIO" button.
 2. Please push the "v" button on the screen.
 3. Please push the "BTA" button on the screen.
 4. Please push the "Setting" button on the screen.



5. Please push the "Connection" button.

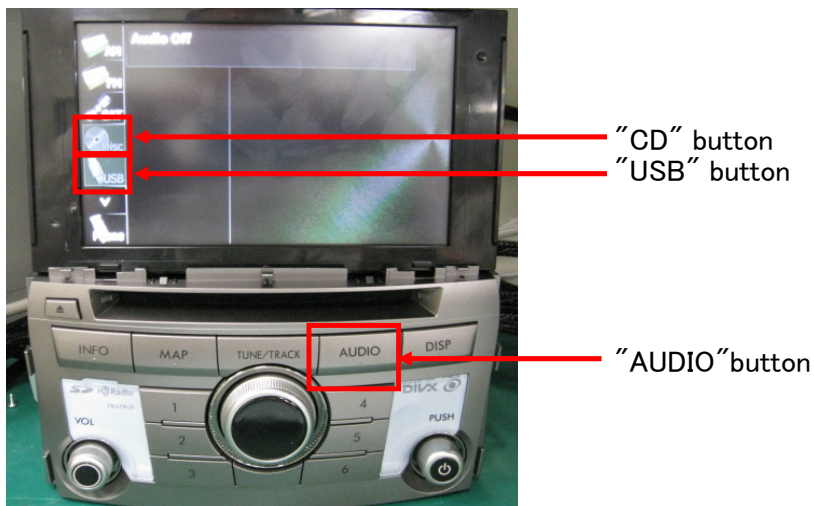


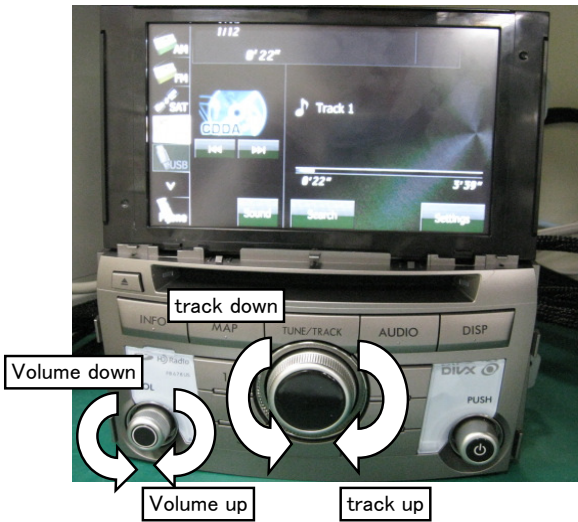
6. If the name of your mobile phone is shown in the list, please touch the name. If the name of your mobile phone is not shown, please touch "Add New" button on the screen. And connect from your mobile phone.



[3] Connecting audio player

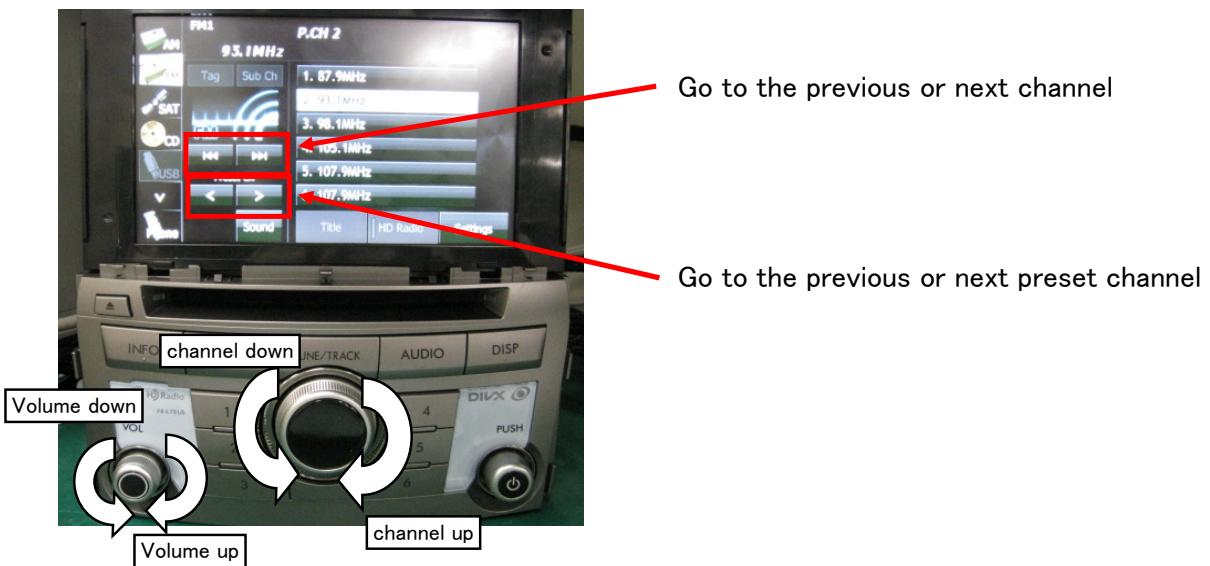
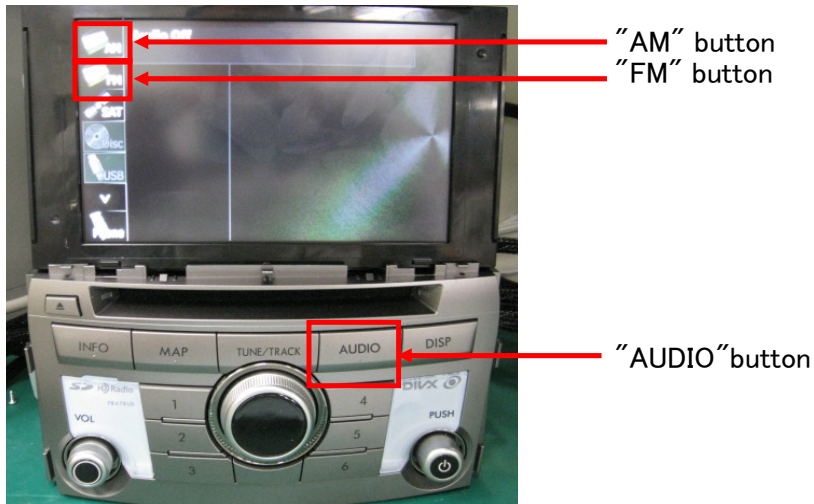
1. Please push the "AUDIO" button.
2. Please push the "CD" or "USB" button on the screen.





[4] Connecting radio

1. Please push the "AUDIO" button.
2. Please push the "CD" or "USB" button on the screen.



14. REFERENCE

■ About the Bluetooth



Bluetooth® is a registered trademark of Bluetooth SIG, Inc.

● This device complies with part 15 of the FCC Rules. Operation is subject to the following two conditions: (1) This device may not cause harmful interference, and (2) this device must accept any interference received, including interference that may cause undesired operation.

L'utilisation de ce dispositif est autorisée seulement aux deux conditions suivantes : (1) il ne doit pas produire de brouillage, et (2) l'utilisateur du dispositif doit être prêt à accepter tout brouillage radioélectrique reçu, même si ce brouillage est susceptible de compromettre le fonctionnement du dispositif.

FCC WARNING

Changes or modifications not expressly approved by the party responsible for compliance could void the user's authority to operate the equipment.

FCC ID: BABFT0036A

IC: 2024B-FT0036A

● CAUTION: Radio Frequency Radiation Exposure

This equipment complies with FCC radiation exposure limits set forth for uncontrolled equipment and meets the FCC radio frequency (RF) Exposure Guidelines in Supplement C to OET65. This equipment has very low levels of RF energy that it deemed to comply without maximum permissive exposure evaluation (MPE). But it is desirable that it should be installed and operated with at least 20cm and more between the radiator and person's body (excluding extremities: hands, wrists, feet and ankles).

Co-location: This transmitter must not be co-located or operated in conjunction with any other antenna or transmitter.

● This Category II radiocommunication device complies with Industry Canada Standard RSS-310.

Ce dispositif de radiocommunication de catégorie II respecte la norme CNR-310 d'Industrie Canada.

■ About the iPod

_iPod is a trademark of Apple Inc., registered in the U.S. and other countries.

_"Made for iPod" means that an electronic accessory has been designed to connect specifically to iPod and has been certified by the developer to meet Apple performance standards.

_Apple is not responsible for the operation of this device or its compliance.

■ Copyright note

The product and the information contained herein is subject to change without prior notification.

This manual may not, in whole or in part, be reproduced or transmitted in any form either electronically or mechanically, including photocopying and recording, without the express written consent of Nav N Go Kft.

© 2010 Nav N Go Kft

All rights reserved.