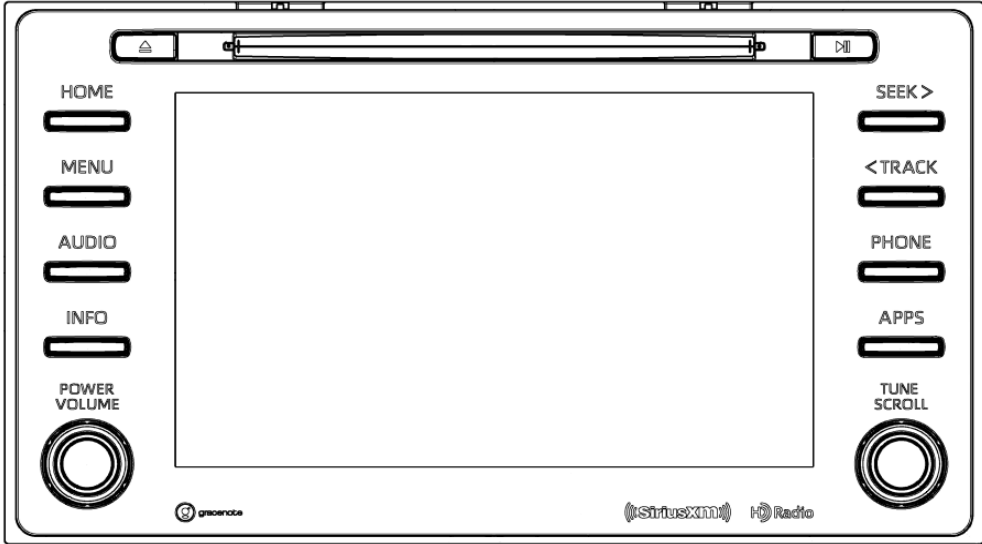


FT0106B

Operation Manual



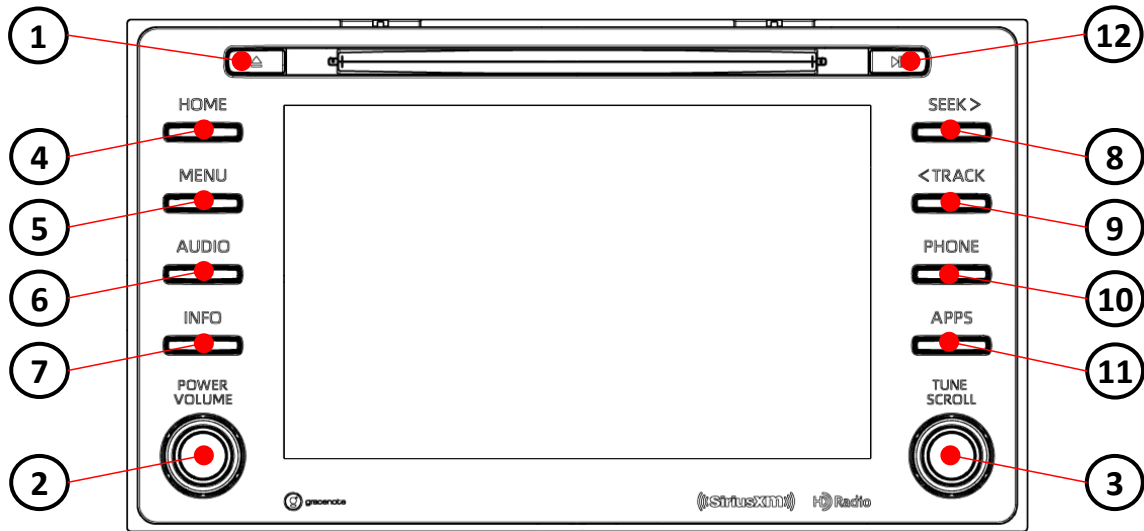
Model name	Car Audio
Model No	FT0106B

Index	Page
1-Rating	2P
2-Button Function Spec	3P
3-Operating manual(Bluetooth/Handsfree)	4P
4-Operating manual(Wi-Fi Hotspot)	5P
5-Reference	6P

1-Rating

RATED VOLTAGE	12.0V(10.5~16.0V)-GROUND
LOAD IMPEDANCE	4Ω
BACK UP CURRENT	2.1mA OR LESS
RATED CURRENT	4A or less (V_{CC}=13.2V 0.5W OUTPUT)
AM TUNING RANGE	530~1710kHz(10kHz step)
FM TUNING RANGE	87.75~107.9MHz (200kHz step)
XM TUNING RANGE	2332.5~2345MHz
CD/DVD TYPE	12cm DISC

2-Button Function Spec



■ AUDIO controls

Button No.	Button Name	Operation
①	EJECT	DISK EJECT
②	POWER	①Push: Audio ON/OFF ②Turn right: Volume up Turn Left: Volume down
③	TUNE	Turn right: Tune up Turn Left: Tune down
④	HOME	Transition to home screen
⑤	MENU	Display an menu selection screen
⑥	AUDIO	Display an audio source selection screen
⑦	INFO	Display an car infomation screen
⑧	SEEK >	Track up Button
⑨	< TRACK	Track down Button
⑩	PHONE	Transition to PHONE mode
⑪	APPS	Transition to delivery app mode
⑫	PLAY/PAUSE	Play /Pause Button

3. Bluetooth/Handsfree接続の方法 (Method of the Bluetooth/Handsfree connection)

【操作手順】[Operation procedure]

①起動 (Power on)

電源ON後、TOYOTA画が表示された事を確認。
After the power ON, confirm to display Toyota screen.

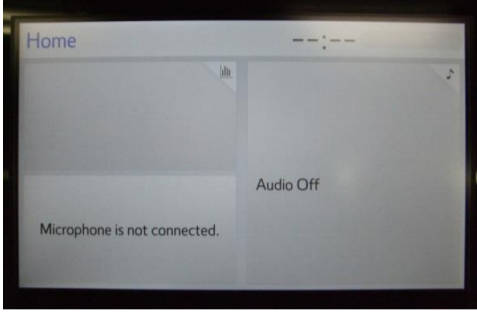


②数秒後に"HOME"画面に遷移します。

A transition to the "HOME" screen after a few seconds.

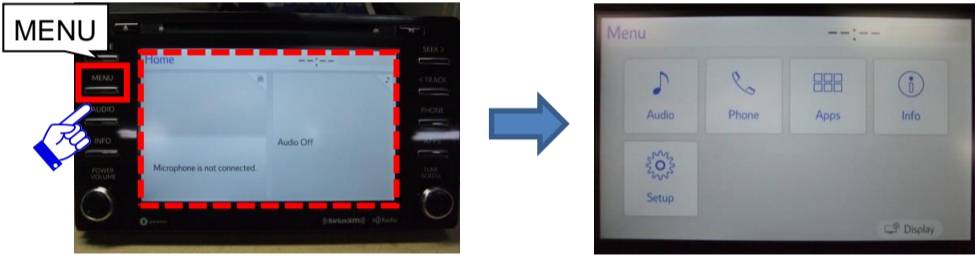
*初回のPower-ON時はやや時間を要します。

Note: It takes a little longer for the first time of Power-ON.



③MENUボタンを押して、MENU画面に遷移させます。

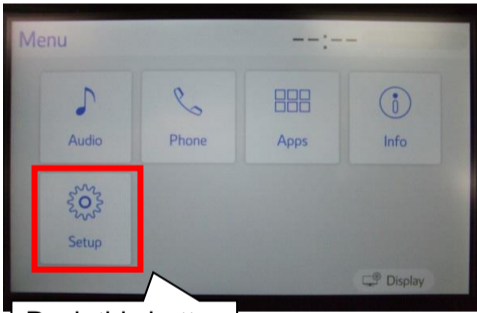
Please press the "MENU" button on the face panel.



Menu select screen

④画面内の [Setup] 鈕を押すと、"Setup"画面に遷移します。

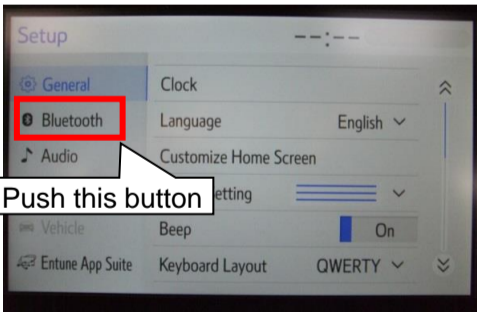
It changes in "Setup" screen by a press [Setup] button on the Display.



Push this button

⑤"Setup"画面に遷移することを確認し、画面上の"Bluetooth"鈕を選択。

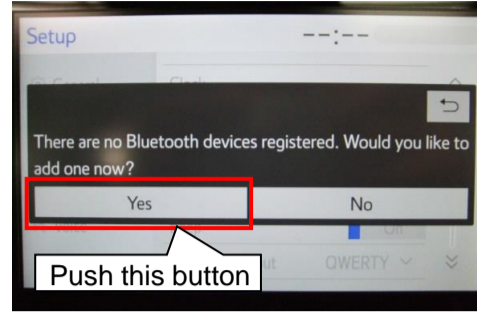
Confirm to change "Setup" screen, select the "Bluetooth" button on the display.



Push this button

⑥画面の"Yes"鈕を押下してください。

Please push down the "Yes" button of the screen



⑦下記画面に遷移したらBluetooth端末 (iPhone、iPodなど)をペアリングモードに設定してください。

Confirm to change screen as below, Please set iPhone or iPod in a pairing mode.



STEP1: Serching Screen ↑

Search Result ↓

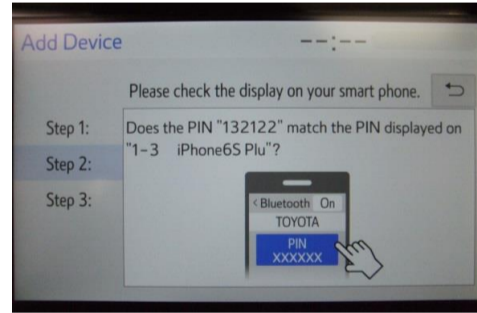


※Display when you have more than one pairing equipment
※複数のペアリング機器がある場合の表示

⑧接続したBluetooth端末を選択します。

Select the Bluetooth terminal is connected.

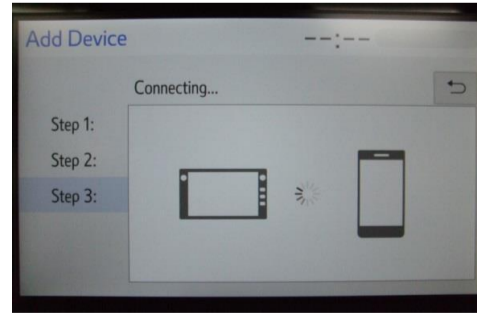
STEP2: Operation of the phone ↓



※電話機の表示にしたがって操作してください
※Operat the phone after the message on the screen

⑨完了すれば"STEP3: connecting"の画面になります。
It becomes the screen of "STEP3: connecting" if completed.

STEP3: connecting ↓



4. Wi-Fi Hotspotの設定方法 (Method of Wi-Fi Hotspot setting)

【操作手順】[Operation procedure]

①起動 (Power on)

電源ON後、TOYOTA画が表示された事を確認。
After the power ON, confirm to display Toyota screen.

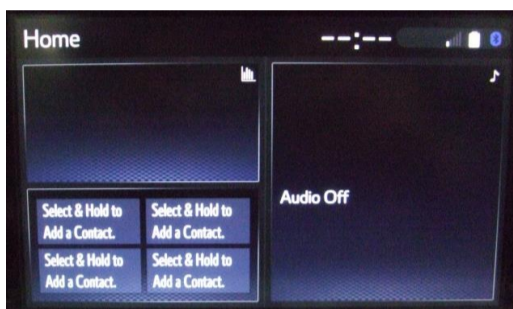


②数秒後に"HOME"画面に遷移します。

A transition to the "HOME" screen after a few seconds.

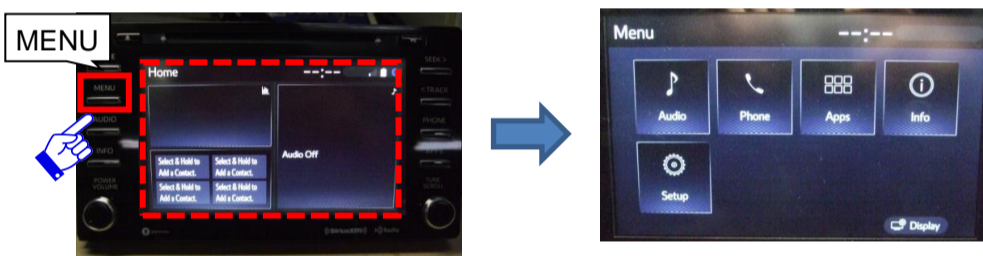
***初回のPower-ON時はやや時間を要します。**

Note: It takes a little longer for the first time of Power-ON.



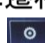
③MENUボタンを押して、MENU画面に遷移させます。

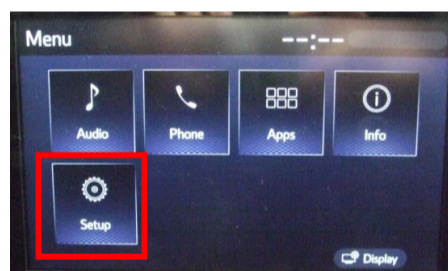
Please press the "MENU" button on the face panel.



Menu select screen

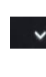
④画面内の 鈕を押すと、"Setup"画面に遷移します。

It changes in "Setup" screen by a press the  button on the Display.



Push this button

⑤"Setup"画面に遷移することを確認し、画面上の 鈕を押下後、"Wi-Fi"の鈕を選択。

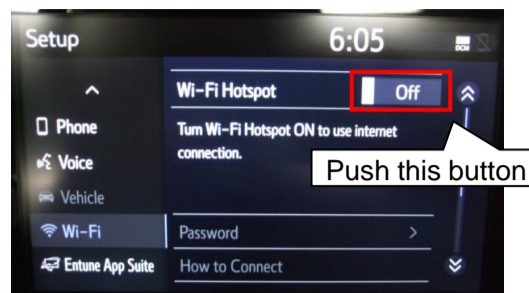
Confirm to change "Setup" screen, push down the  button on the display. And then, "Wi-Fi" button on the display.



Push this button

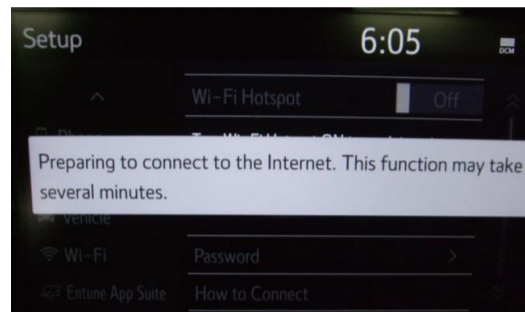
Push this button

⑥"Wi-Fi Hotspot"の項目の"off"の鈕を押下してください。 Please push down the "off" of "Wi-Fi Hotspot" items.



⑦数分後に、"Wi-Fi Hotspot"が有効になり、 "Wi-Fi Hotspot"の項目がONとなります。

After several minutes, "Wi-Fi Hotspot" becomes active. And then "Wi-Fi Hotspot" item becomes ON.



**※カナダ向けモデルはWi-Fi機能なし。
Canada model : Wi-Fi unused.**

5 – Reference

■ FCC

CAUTION: Radio Frequency Radiation Exposure

This equipment complies with FCC radiation exposure limits set forth for an uncontrolled environment and meets the FCC radio frequency (RF) Exposure Guidelines. This equipment should be installed and operated keeping the radiator at least 20cm or more away from person's body in normal use position.

Co-location: This transmitter must not be co-located or operated in conjunction with any other antenna or transmitter.

This device complies with part 15 of the FCC Rules. Operation is subject to the following two conditions: (1) This device may not cause harmful interference, and (2) this device must accept any interference received, including interference that may cause undesired operation.

FCC WARNING

Changes or modifications not expressly approved by the party responsible for compliance could void the user's authority to operate the equipment.

■ IC

IC: 2024B-FT0106B

This device complies with Industry Canada's licence-exempt RSSs. Operation is subject to the following two conditions:

- (1) This device may not cause interference; and
- (2) This device must accept any interference, including interference that may cause undesired operation of the device.

This equipment complies with IC radiation exposure limits set forth for an uncontrolled environment and meets RSS-102 of the IC radio frequency (RF) Exposure rules. This equipment has very low levels of RF energy that is deemed to comply without maximum permissive exposure evaluation (MPE).

But it is desirable that it should be installed and operated keeping the radiator at least 20cm or more away from person's body.

Le présent appareil est conforme aux CNR d'Industrie Canada applicables aux appareils radio exempts de licence. L'exploitation est autorisée aux deux conditions suivantes :

- (1) l'appareil ne doit pas produire de brouillage;
- (2) l'utilisateur de l'appareil doit accepter tout brouillage radioélectrique subi, même si le brouillage est susceptible d'en compromettre le fonctionnement.

Cet équipement est conforme aux limites d'exposition aux rayonnements énoncées pour un environnement non contrôlé et respecte les règles d'exposition aux fréquences radioélectriques (RF) CNR-102 de l'IC. Cet équipement émet une énergie RF très faible qui est considérée comme conforme sans évaluation de l'exposition maximale autorisée (MPE).

Cependant, il est souhaitable qu'il devrait être installé et utilisé en gardant une distance de 20 cm ou plus entre le radiateur et le corps humain.