

MANUAL

DIGITAL AUDIO PLAYER  
(DG-100)

**CAUTION:** Changes or modifications not expressly approved by the manufacturer responsible for compliance could void the user's authority to operate the equipment

#### **WARNING**

This device complies with part 15 of the FCC Rules. Operation is subject to the following two conditions: (1) This device may not cause harmful interference, and (2) this device must accept any interference received, including interference that may cause undesired operation.

#### **INFORMATION TO USER:**

This equipment has been tested and found to comply with the limit of a Class B digital device, pursuant to Part 15 of the FCC Rules. These limits are designed to provide reasonable protection against harmful interference in a residential installation. This equipment generates, uses and can radiate radio frequency energy and, if not installed and used in accordance with the instructions, may cause harmful interference to radio communications. However, there is no guarantee that interference will not occur in a particular installation; if this equipment does cause harmful interference to radio or television reception, which can be determined by turning the equipment off and on, the user is encouraged to try to correct the interference by one or more of the following measures:

1. Reorient / Relocate the receiving antenna.
2. Increase the separation between the equipment and receiver.
3. Connect the equipment into an outlet on a circuit different from that to which the receiver is connected.
4. Consult the dealer or an experienced radio/TV technician for help

## CONTENTS

# Features

# Accessories

# Front & Side View

# LCD Display

# Controls

- Power On
- Playing
- Power Off
- Select & Search track
- Volume control
- Repeat(A<->B)
- Hold
- USB Storage

# Connecting DG-100 with PC

- Installation of USB device driver for Windows 98/SE
- Connecting DG-100 with PC
- Managing files
- Formatting
- Separating DG-100 from PC

# Precautions

# Product Specification

# Trouble Shooting

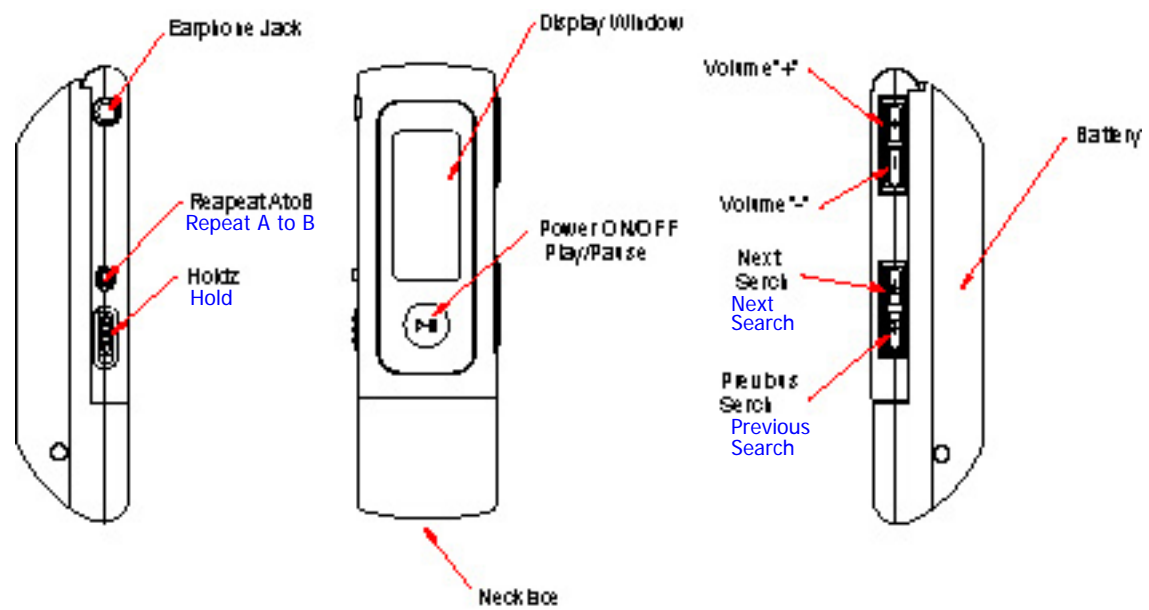
## **# Features**

- 1 for 2 (MP3Player + USB Storage Device)
  - Main Body + Battery Case = MP3 Player
  - Main Body = USB Storage Device
- Built-in Memory (64MB/128MB)
- Plug & Play (No Need for File Manager)
- USB 1.1 Support
- Approximately 10Hrs Playback Time with AAA Battery 1EA
- Supported Operating System
  - Windows 98/SE, Windows ME/2000/SE
  - ( For Windows 98/SE, USB Device Driver CD is needed.)

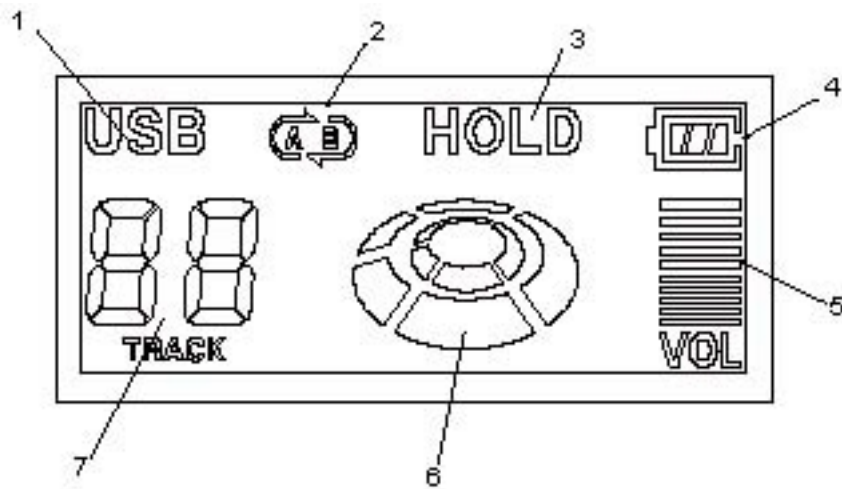
## **# Accessories**

- USB Device Driver CD for Windows 98/SE
- Necklace
- User' s Manual
- Battery 1EA(AAA Alkaline)
- USB Extension Cable
- Earphone

## # Front & Side View



## # LCD Display



1. USB  
: Displayed when connected with PC
2. Repeat A↔B  
: Displayed while Repeat A↔B is played
3. Hold
4. Battery Indicator
5. Volume Level
6. Play Icon
  - Rotates while it is playing
  - Stops when it stops
  - Rotates at higher speed while it searches a track
7. Track Number(Seven Segment)  
: Displays the current track number

## # Controls

- Power On(▶||)  
: Press Play/Stop(▶||) button and it will play the track you stopped last time. (Resume Function)  
When no MP3 file is stored in the player, the player will be powered on for a moment and off again automatically.
- Playing(▶||)  
: Press Play/Stop(▶||) button in playing mode and it will stop playing, and if you press the Play/Stop(▶||) button again in stop mode, it will play again.
- Power Off(▶||)  
: Press the Play/Stop(▶||) button longer than 2 second in playing or stop mode and power will be off.  
In stop mode, power will be off automatically within 2 minutes.  
In the event of insufficient battery power, the player may be shut off even before the battery is completely run down.
- Select & Search Track(▶▶,◀◀)  
: Press the FF(▶▶) or REW(◀◀) button to select next or previous track.  
Press the FF(▶▶),REW(◀◀) key longer than 2 second then it searches inside one song. This search function is only available in present song.  
If searched to first end of searched song then plays from the first of present song.  
If searched to last end of searched song then plays from the first of next song.
- Volume Control (+/-)  
: Press volume(+/-) button for volume control.  
The volume level is displayed on the LCD window.  
Press volume(+/-) button 3 times shortly to increase/decrease one volume level.  
Press the +/- button longer to change volume level continuously.
- Repeat (A↔B)  
: Press Repeat(A↔B) button to set the starting point of A↔B

Repeat, and press the Repeat(A↔B) button again to set the ending point of A↔B Repeat.

For cancellation of A↔B Repeat, Press the Repeat(A↔B) button again.

This function is only available in present track.

- Hold  
: Push Hold key to the “HOLD→” direction and the buttons of the player does not work, with “HOLD” displayed on LCD window. Pull back Hold switch to the opposite direction and the functions of the buttons will recover.
- USB Storage  
: Remove the battery case to make a portable USB storage device. When you plug DG-100 without battery case into the USB port of your computer, “Removable Disk” folder will be created in My Computer out of Window Explore. The DG-100 can be used in the same way as a floppy diskette or HDD. You can store or delete not only mp3 files but any data files.  
Note) MP3 files must be placed in the ROOT folder of the DG-100 so that it can play right.



## # Connecting DG-100 with PC

- Installation of USB Device Driver for Windows 98/SE
  - (1) Insert the installation CD in the CD-ROM Driver of your computer and double click “DrvSetup.exe” file in the CD.



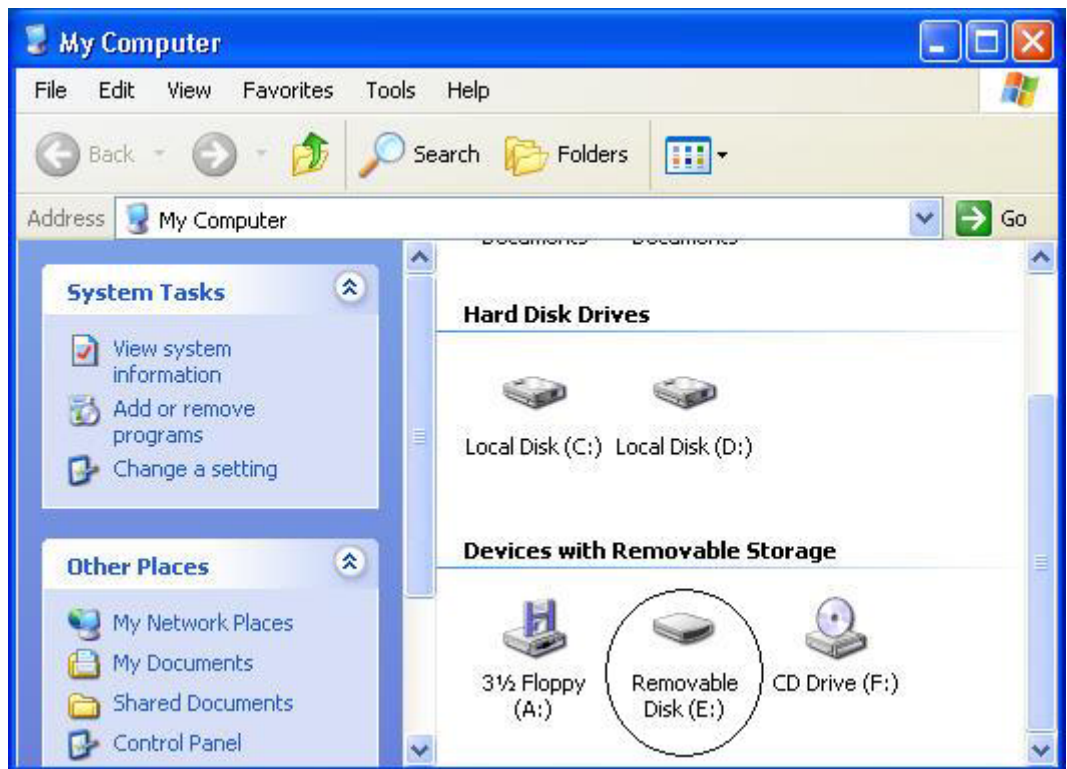
- (2) Click “98 Driver Install” button.



- (3) Click “OK” button to complete the installation.

Remark) For installation in Windows 98, you can also double click “98Install.bat” file in the CD. Double click “98Uninstall.bat” in the CD to uninstall the USB Device Driver.

- Connecting DG-100 with PC
  - (1) Remove the battery case from the main body
  - (2) Plug the main body into the USB port of your computer directly and “Removable Disk” folder will be created in “My Computer” out of “Window Explore” .



The main body of DG-100 can be used in the same way as a floppy diskette or HDD. You can store or delete not only mp3 files but any data files.

“USB” icon will be displayed in the LCD window when the main body is plugged into your computer.

When DG-100 is removed from your computer, the “Removable Disk” folder will disappear in My Computer” of the “Window Explore” .

- Managing files

- : When you plug the DG-100 into the USB port of your computer directly, “Removable Disk” folder will be created in “My computer” out of “Window Explore” . First when you buy DG-100, there is neither folder nor file in Removable Disk.

- \* Music files must be placed in the ROOT folder of DG-100 so that it can play right.

- \* The DG-100 can be used in the same way as a floppy diskette or HDD. You can store or delete not only mp3 files but any data files.

Warning1) Please wait 10 seconds at least before you remove DG-100 from your computer since the data transfer

process may be still under way even though your computer monitor tells you the data has successfully transferred to or from DG-100.

Warning2) Music files must be placed in the ROOT folder of DG-100 so that it can play right.

- Formatting

: For formatting of DG-100, you should use the program “DGLAB DiskDoctor” exclusively provided by DGLAB.

Caution 1) If DG-100 is formatted by Windows command MP3 files in DG-100 may not be played properly.

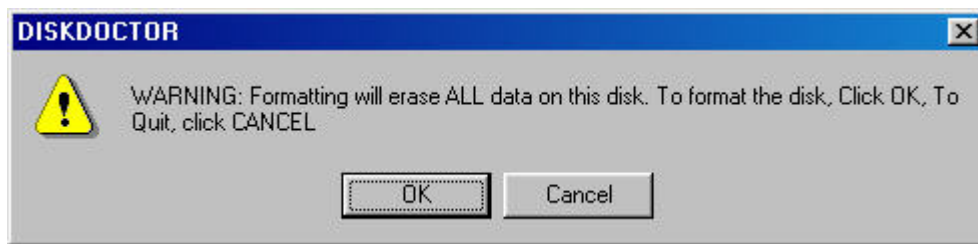
Caution 2) You can't run “DGLAB DiskDoctor” unless DG-100 is plugged into your computer.

(1) Insert the installation CD into the CD-ROM driver in your computer and double click “DiskDoctor.exe” file in “Format Util” folder.



(2) When you click “Formatting” button after selecting the format option (Quick Format or Full Format), Warning message will be displayed as below.

Caution) Since “Full Format” will take much longer time than “Quick Format”, it is generally recommended to use “Quick Format” option.



(3) Click "OK" button and the formatting process will begin as below.



(4) When the formatting process is completed, the "Format Completed!" message will be displayed as below.




(5) Click "OK" button.

(6) Escape from "DGLAB DiskDoctor" by clicking "OK" button.

- Separating DG-100 from PC
  - : Make sure that the data transfer should be completed before removing DG-100 from your computer.
  - The data in DG-100 may be severely damaged in the event that

the DG-100 is removed from your computer while the data is being transferred.

In Windows 2000/ME/XP, for safe removal, click the  icon “(hardware removal)” at the bottom right corner of your computer screen and follow the instructions that your computer guides you.

In Windows 98/SE, select the “Removable Disk” , click the right button of your mouse and click “Eject” button before you pull DG-100 out of your computer.

## # Precautions

1. Do not drop the player ( a shock is a major cause of breakdown)
2. Be sure to take out the battery in case that the player is not used for a long time.
3. Avoid exposure to dust, moisture, magnetic body, direct sunlight and heat.
4. Please avoid static electricity.

The player may not be working, due to overflow of static electricity. When this happens, turn the player off and on again.

5. Do not disassemble the player.
6. For formatting, you should use the program “DGLAB DiskDoctor” exclusively provided by DGLAB. You should not try to format DG-100 by using Windows™

## # Product Specification

- Model: DG-100
- Memory : Built-in Memory (64MB/128MB)
- Display : Built-in Display (Character)
- Interface : USB 1.1
- Download Speed : Max 12Mbps( depending on computer)
- Playback Time : Approximately 10 Hrs (AAA Battery 1EA)
- Audio Output : 6.0mW / 16Ω
- S/N Ratio: 90dB
- Output Frequency : 20Hz~20KHz
- Operating Temperature : 0~45℃
- Power
  - MP3 Player : DC 1.5V (AAA Battery 1EA)
  - USB Storage Device : PC USB Powered
- Supported OS : Windows 98/SE, Windows ME/2000/XP
- Size : 28.4 x 94.2 x 23.3 mm
- Weight : 33 g(w/o battery)

## # Trouble Shooting

- When you have any problem with DG-100, please check the followings first before consulting a service center.
- 1. No Power
  - (1) Check whether the battery is inserted properly.
  - (2) Check the voltage of battery (if battery is out, the player won' t work)
- 2. When the power is turned on and off by itself
  - (1) Check whether the Hold switch is placed on "HOLD(" position.
  - (2) Check whether the battery has enough power.
- 3. When the buttons of DG-100 don' t work.
  - (1) Check whether the Hold switch is placed on "HOLD(" position.
- 4. No sound from earphones
  - (1) Check whether the earphone is plugged properly
    - \* If either (right or left) of the earphones does not work,  
Check whether the earphone is plugged properly
- 5. Cannot connect to PC or file download doesn' t work
  - (1) Check whether the player is correctly plugged to your computer.
  - (2) Check whether USB storage device driver for Windows 98/SE is correctly installed in case that the OS of your computer is Windows 98/SE.
  - (3) Remove the player from your computer and plug it again.