

# CONTENTS

## **1. Preparation**

- Product Details
- Package Contents
- Name of parts
- LCD Display
- Loading the Battery

## **2. Windows98/SE Driver**

### **Install**

- Windows98/SE Driver Install

## **3. Computer Connection**

- Connecting to a PC
- Downloading Files
- Disconnecting from a PC

## **4. Basic Operation**

- Turning Power On/Off
- Playing the Track
- File Navigation
- Main Menu
- Voice-Recording

- Playing the FM Radio

- Playback the voice-recorded files

- Button List

## **5. Settings**

- DISPLAY
- REPEAT MODE
- FILE
- MEMORY INFO
- USER EQ
- TEMPO
- RESUME
- SLEEP TIME
- Menu Chart

## **6. Remarks**

- Precautions
- Product Specifications
- Trouble Shooting

**Note)** Contents of product manual are subject to change due to improvement of the product without previous notice.

# 1. Preparation

## Product Details

- Playing MP3, WMA files, FM Radio, Voice Recording
- Built-in Memory(128MB/256MB/512MB)
- GUI(Graphic User Interface) Menu Support
  - Easy to use multi-functions using graphic display like icon
- 6 Equalizers
  - Normal/Jazz/Classic/Pop/Rock/User-defined
- Navigation
  - Easy to search for files.
- Repeat Section “A<->B”
  - Repeating any section you want to listen again for studying foreign language
- PC USB Power
  - Using the PC’ s USB Power when connected to a PC (no battery required for data transfer)
- NO software Required (device seen as new drive letter)
  - (Note: driver needed in Windows 98/SE)
- Long Battery Life
  - 10 hours with AAA type battery

## Package Contents



DG-150



CD



Necklace



cable



Battery (AAA X 1EA)

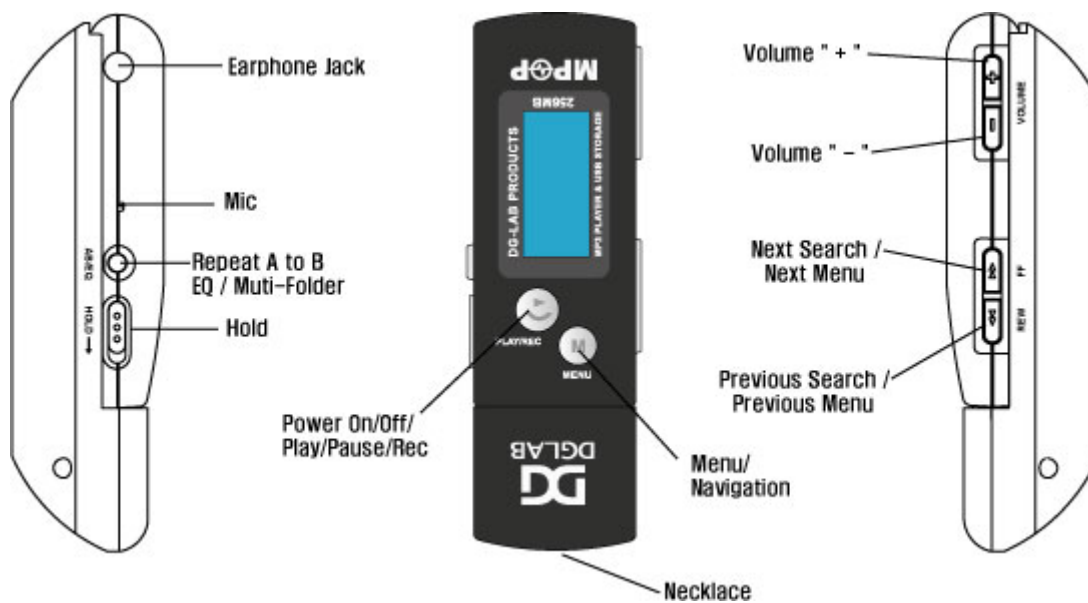


Earphones



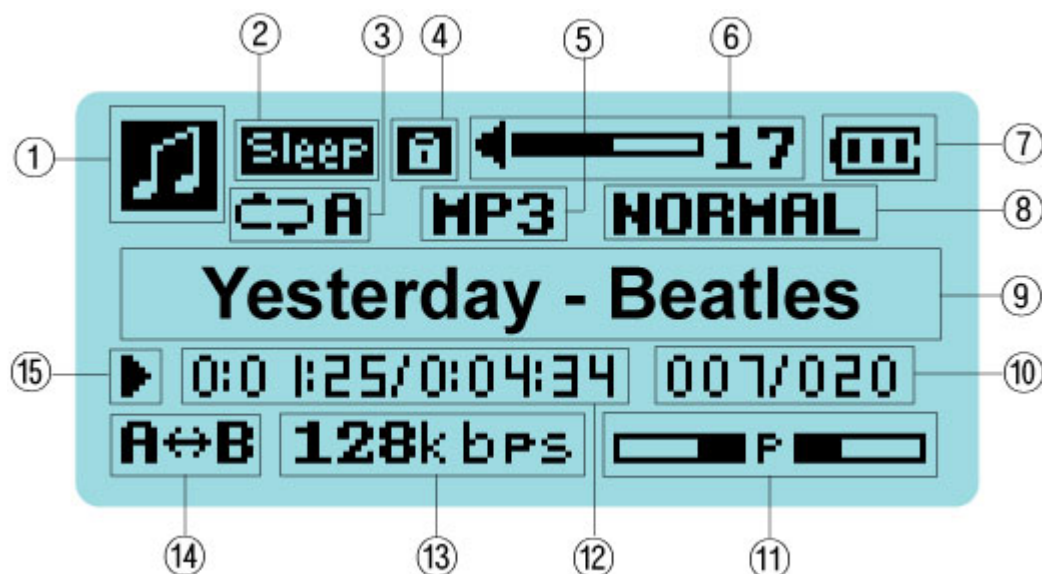
User Guide

## Name of parts



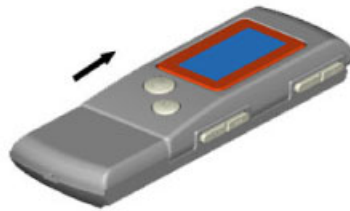
Note) Plastic protect-cover is on LCD display at shipment

## LCD Display

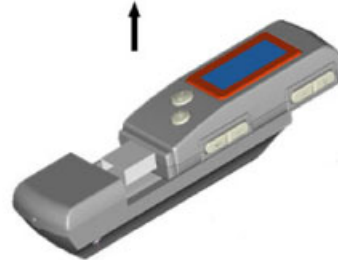


- ① Displays operations (Playback, Voice-recording, FM radio)
- ② Appears when sleep time is set up
- ③ Displays playback type (repeat type)
- ④ Displays when the Hold Switch is on
- ⑤ MP3/WMA (File type)
- ⑥ Volume Level Icon
- ⑦ Displays the battery's power level
- ⑧ Equalizer(EQ) Icon
- ⑨ Present file's name or ID3 tag
- ⑩ Present file number / Total file numbers
- ⑪ Displays the volume output as the visualization of audio signal
- ⑫ Elapsed time of a present file / Total playing time of a present file
- ⑬ BIT RATE
- ⑭ Repeat Section Icon
- ⑮ Playing/Stop Icon

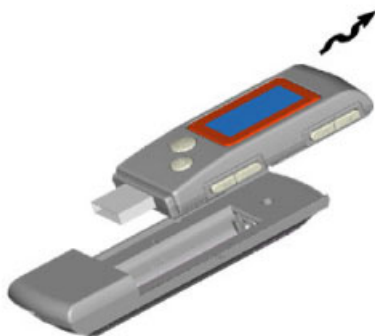
## Loading the Battery



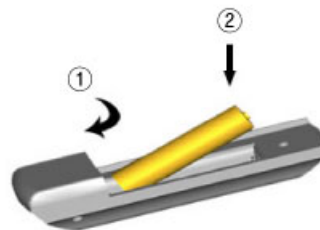
1. Slide the main body arrow-way



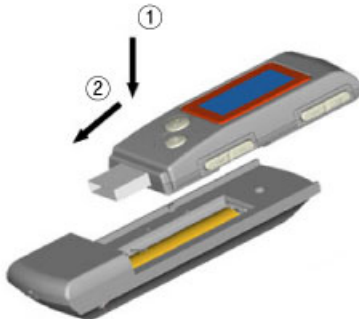
2. Slide the main body as far as it will go and then pull it upward



3. Separate the main body from the battery case



4. Install the battery (AAA) with the correct polarity as indicated on the label



5. Combine the main body and the battery case again



6. The image of combined status

### Cautions)

If you do not intend to use the battery for a long period of time, remove the battery from the product.

If the battery is leaking, remove it from the product.

If the battery is leaking, wipe the battery terminal clean and then loading the new battery.

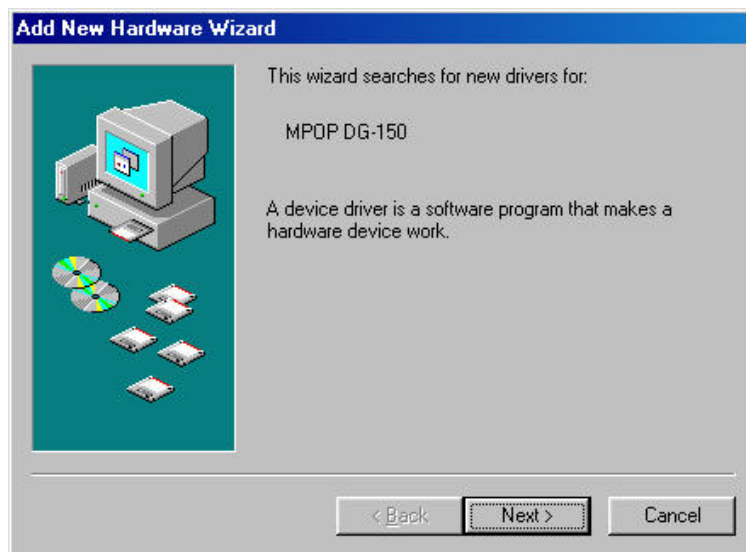
## 2. Windows98/SE Driver Install

### Windows98/SE Driver Install

Note) Install this on a PC that uses **Windows98/SE OS**, only first installation is necessary.

(1) Insert the enclosed CD into the CD-Rom Drive and then plug DG-150 into a USB port on a PC.

You may see following window ( “Add New Hardware Wizard” ). Click “Next” button.



(2) The following window will appear.

Select the first option ( “Search for the best driver for your device” ) and click “Next” button



(3) Select “CD-ROM drive” and click “Next” button



(4) The following window will appear. Click “Next” button.



(5) Click “Finish” button.



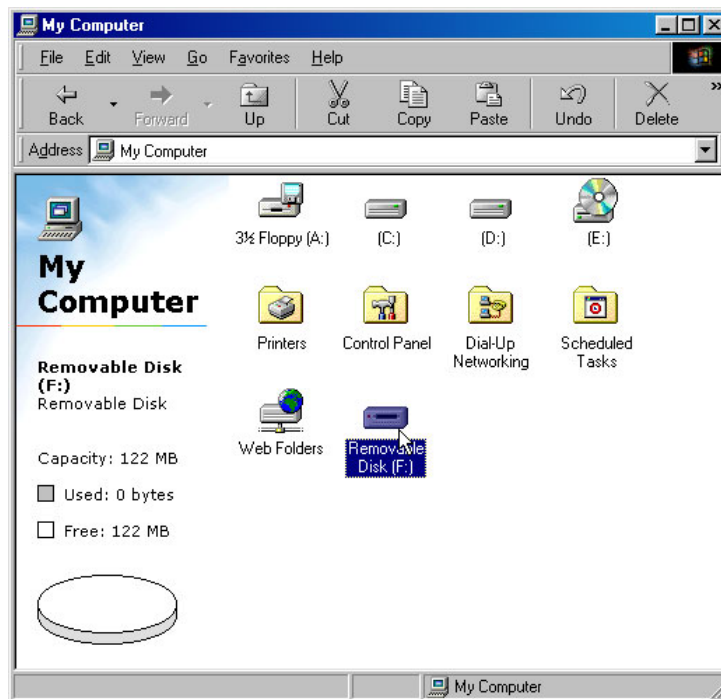
Driver Installation is completed.

“Removable Disk” will shown in “My Computer” folder. When it is removed from your computer, the “Removable Disk” will disappear from “My Computer” .

### 3. Computer Connection

#### Connecting to a PC

- (1) Remove the main body from the battery case
- (2) Plug the main body into a USB port on your computer
- (3) “Removable Disk” will shown in “My Computer” folder



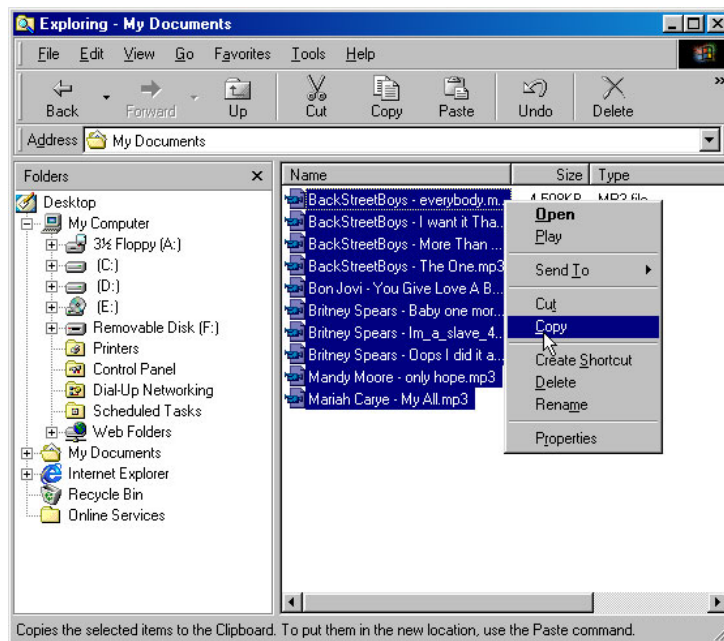
The main body of DG-150 can be used like a floppy diskette or removable HDD. When it is removed from your computer, the “Removable Disk” will disappear from “My Computer” .

"USB CONNECTED" message as shown will be displayed on the main body' s LCD screen when the main body is plugged into your computer .

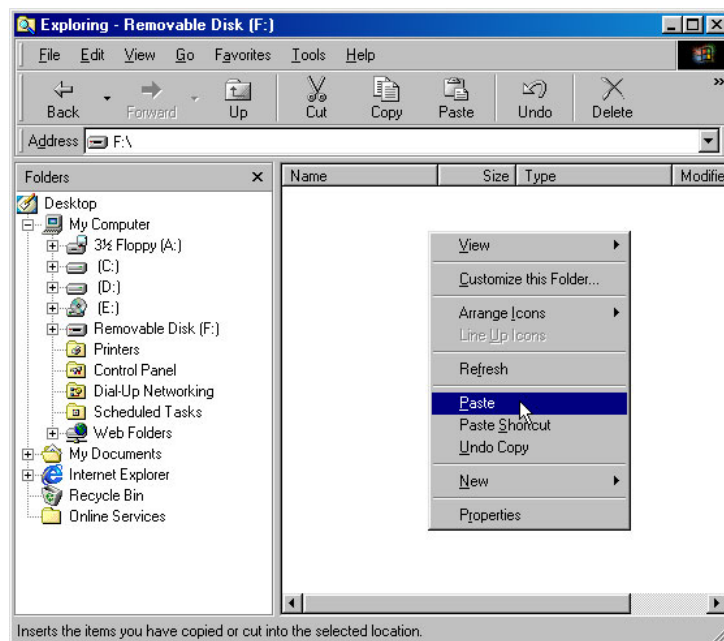
**USB CONNECTED**  
**LINE READY**

## Downloading Files

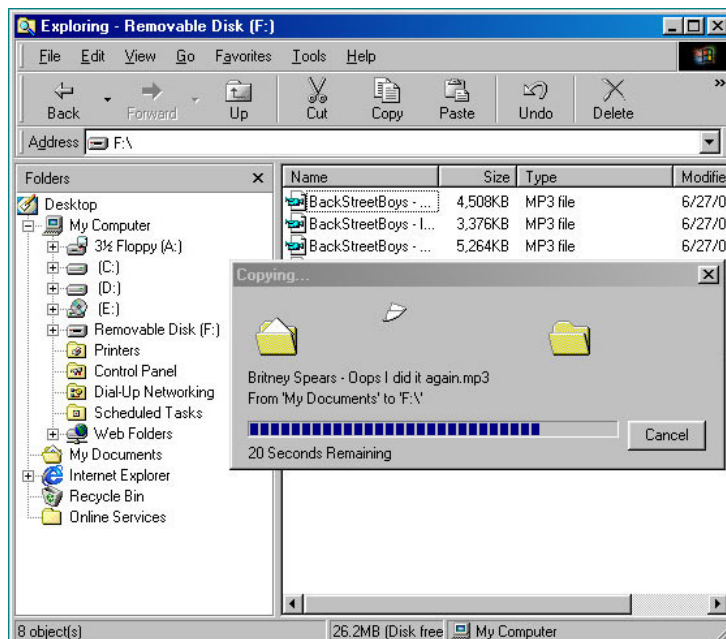
- (1) Select the music files from your PC and then Press right button on you mouse and Select “copy”



- (2) Paste the selected files in the “Removable Disk” in “My Computer”



(3) Copying the files to “Removable Disk” will be shown.




#### Note)

Make sure that you see “Line Ready” on the LCD screen at DG-150 **BEFORE removing** DG-150 from you PC because files are copying even if download looks like completed on the monitor of your PC.



### Disconnecting from a PC

In Windows 2000/ME/XP, click the “Safely Remove Hardware” icon (  ) in your system tray and Stop the device you want to unplug or eject.


In Windows 98/SE, select the “Removable Disk” and right click your mouse and select the “Eject” command before pulling DG-150 from your PC.

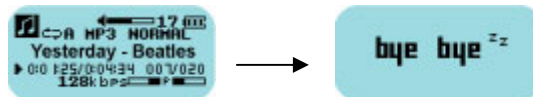
## 4. Basic Operation

### Turning Power On/Off




- To Power On, press and hold the  (PLAY) button about 1 second.



- To Power Off, press and hold the  (PLAY) button about 2 seconds in playback or stop mode.



- If no button is pressed in stop mode, power will be cut off automatically within 1 minute to preserve the battery.

**Note)** “KEY HOLD!!” Message will be blinking if you press  (PLAY) button when Hold switch  (HOLD) is on. If Hold Switch  (HOLD) is not Off within 5 seconds, power will be cut off automatically.

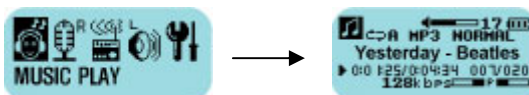
KEY HOLD !!



### Playing the Track

- If you turn power on, a track will be playing right away. If there is no file, “NO TRACK” message will be displayed.




- If you are in other MODE (i.e. VOICE RECORD, FM RADIO, VOICE PLAY, SETTINGS), select “MUSIC PLAY” (Playing Mode) in Main Menu.

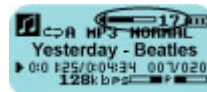


- Press  (PLAY) button to play a track while pause or stop. Press  (PLAY) button to pause it while playing a track.





### ● Volume Control





Press the  (VOLUME) button to adjust the volume.



### ● Select & Search track

- Press  (REW, FF) button to select and play the next or previous track.
- Press and hold the  (REW, FF) button about 2 seconds to search a track.

### ● Repeat Section

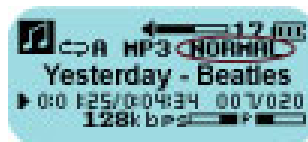
- (1) While a track is playing, press the  (A<->B) button to set the repeat section (starting point “A” ) of a desired track.
- (2) Press the  (A<->B) button again to set the ending point ( “B” ) of the desired section of the track and playing repeatedly.
- (3) To cancel a set A<->B repeat, Press  (A<->B) button again or  (REW, FF) button.





### ● Equalizer


To select the EQ level, press and hold  (A<->B) button more than 1 second.

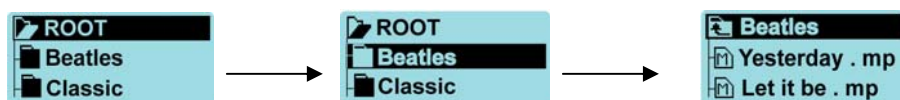
- NORMAL : Standard EQ good for all genres of music
- JAZZ : EQ levels adjusted for Jazz music
- CLASSIC : EQ levels adjusted for Classical music
- POP : EQ levels adjusted for Pop music
- ROCK : EQ levels adjusted for Rock music
- USER : EQ levels a user can adjust





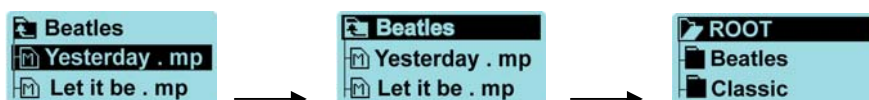
## File Navigation

(1) To search files, press and hold  (MENU) button about 1 second and then search files by pressing  (REW, FF) button.

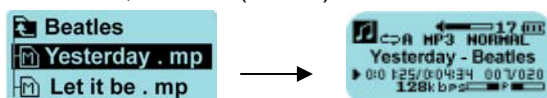
(2) If you want to look at files in a folder, select the folder and press  (PLAY) button.



(3) To move to upper folder, select the desired folder by pressing  (REW, FF) button and then press  (PLAY) button.



(4) To play the desired track, press  (A<->B) button







(5) To exit navigation, press  (MENU) button or select EXIT.



## Main Menu





There are 5 modes in Main Menu. i.e. MUSIC PLAY, FM RADIO, VOICE RECORD, VOICE PLAY, SETTING Mode.

- To enter the Main Menu, press the  (MENU) button.
- To move to the desired menu, use the  (REW, FF) button.
- To move to sub-menu or select the option, press the  (PLAY) button.
- If you press the  (MENU) button again or no button is pressed for 10 seconds, it will automatically exit from the Main Menu and return to the previous mode.

## Voice-Recording

- When in Main Menu, select “VOICE RECORD” icon by using  (REW, FF) button and press  (PLAY) button.





- To start a recording, press the  (PLAY) button.
- To stop the recording, press the  (PLAY) button again.

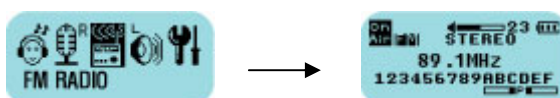


**Note)** A voice-recorded file is saved in VOICE Folder like VOICE000.VRF etc.






Voice-Recording is available only if there is space in memory.

## Playing the FM Radio

- To play the FM Radio, select “FM RADIO” icon by using  (REW, FF) button and press  (PLAY) button in Main Menu.
- To change the frequency, press  (REW, FF) button.
- If you press  (REW, FF) button about more than 1 seconds, it will move to previous or next the broadcast frequency. (AUTO SCAN)

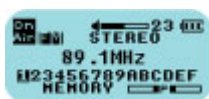



#### [Preset Tuning]


- Hold down the  (A<->B) button more than 1 second.
- Tune in to a station you wish to preset using the  (REW, FF) button.
- Press the  (A<->B) button again more than 1 second and select the preset number using the  (REW, FF) button.
- Press the  (A<->B) button again more than 1 second to preset the station number.

\* Some stations may not be preset in place where transmitting sensitivity is bad.

#### [Tuning in to a Preset Station]



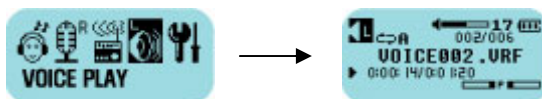
To play the preset station, press the  (A<->B) button to enter the [MEMORY] Mode

Press the  (REW, FF) button to select the desired preset station number

### Playback the Voice-recorded Files

When in Main Menu, select “VOICE PLAY” icon and press the  (PLAY) button.

You can operate the functions – such as playing the files, volume control and move between tracks – the same way as in Playing the Track.




**Note)** To change different repeat modes (one file repeatedly (), all files one time (), all files repeatedly ()), press the  (MENU) button more than 1 second.

## Button List

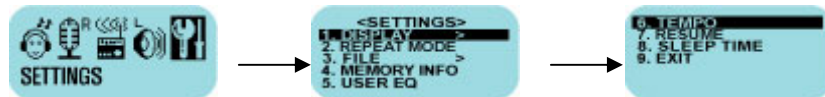
Button	Previous State	Press Length	Operation
<b>PLAY/STOP</b>	Power Off	Long	Turn power on and playing
	Playing the track	Short	Stop
	Playing/Playback /Voice-Recording FM / Menu Navigation	Long	Turn power off
	Stop in Playing/Playback	Short	Play the track/Playback the voice- recorded file
	Stop in Voice- Recording	Short	Start Voice-Recording
	Recording the Voice	Short	Stop
	Menu	Short	Select the (sub)mode/option
	Navigation	Short	Move to upper(sub) directory
<b>FF</b>	Playing/Playback	Short	Playing the next track/file
	Playing/Playback	Long	FF and play within the track/file
	FM	Short	Change the frequency, Moving channels
	FM	Long	Auto scan
	MENU	Short	Moving MENU
<b>REW</b>	Playing/Playback	Short	Playing the previous track/file
	Playing/Playback	Long	REW and play within the track/file
	FM	Short	Change the frequency, Moving channels
	FM	Long	Auto scan
	MENU	Short	Moving MENU




Button	Previous State	Press Length	Operation
<b>VOL +</b>	Playing/Playback/FM/ Voice-Recording	Short	Increase the volume along with volume level
	Playing/Playback/FM/ Voice-Recording	Long	Increase the volume continuously
	<b>MENU</b>	Short/Long	adjust the level in the setting
<b>VOL -</b>	Playing/Playback/FM/ Voice-Recording	Short	Decrease the volume along with volume level
	Playing/Playback/FM/ Voice-Recording	Long	Decrease the volume continuously
	<b>MENU</b>	Short/Long	adjust the level in the setting
<b>REPEAT(A-B)</b>	Playing/Playback	Short	Turn Repeat Mode On/Off
	Playing	Long	Change the EQ level
	FM	Short	Turn MEMORY Mode On/Off
	FM	Long	Preset the station(channel)
	Navigation	Short	Select the file
	Settings(FILE DELETE)	Short	Delete the file
<b>MENU</b>	Playing/Playback/FM/ Voice-Recording	Short	Enter the MENU
	Playing/Stop a track	Long	Navigation
	<b>MENU</b>	Short	Exit from the MENU

## 5. Settings

To enter Settings, select “Settings” icon and press  (PLAY) button in Main Menu.

There are DISPLAY, REPEAT MODE, FILE, MEMORY INFO, USER EQ, TEMPO, RESUME, and SLEEP TIME Menu and their Sub-Menu in settings.




- To move between the Menu, use the  (REW, FF) button.
- To adjust the level, use the  (VOLUME) button.
- To exit for sub-menu, select “EXIT” and To exit for Menu Mode, press the  (MENU) button.

Note) The values adjusted in settings are saved only in RESUME ON. When in RESUME OFF, return to default value.

### DISPLAY


#### ● LCD CONTRAST



Contrast can be adjusted by using the  (VOLUME) button.

#### ● SCROLL SPEED




Scroll speed of Tag Information/File Name on the LCD can be adjusted by using the  (VOLUME) button. (VOL- : slow, VOL+ : fast)

File name will be displayed and scrolled while you are adjusting the Scroll Speed so that you can confirm your setting. (If no file is saved, “SCROLL SPEED” text will be displayed)

#### ● BACKLIGHT TIME



Backlight time can be adjusted by OFF or /3/5/10/15 sec. using the  (REW, FF) button.

## ● TAG INFO



ON: Display track with Tag Information.

OFF: Display track with file name.

## REPEAT MODE

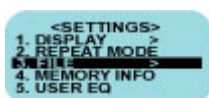
You can select and set 7 Repeat and Shuffle options in playing as follows.

RPT ONE		Play a track you are listening to repeatedly.
ALL FILE		Play all tracks in memory once and stop.
RPT ALL		Play all tracks in memory repeatedly.
FOLDER		Play all tracks in the folder and stop.
RPT FOLDER		Play all tracks in the folder repeatedly.
SHUFFLE		Randomly play all tracks in memory once and stop.
RPT SHUFFLE		Randomly play all tracks in memory repeatedly.



To change the options, use the (REW, FF) button.

## FILE



When in File Menu, the player will stop automatically.



There are DELETE and FORMAT options in File Menu. Files are divided into Music files and Voice-Recorded Files so that each file is deleted separately.

## ● Deleting Files


(1) Select DELETE in FILE Menu and then select MUSIC or VOICE.

(2) Select the file you wish to delete in Navigation using the (REW, FF) button.

To display files in a folder, select the folder and press (PLAY) button.

(3) To delete the file, press the  button. Message “FILE DELETE ARE YOU SURE?” is displayed on the LCD. Select “YES” using the  (REW,FF)

button and press  (PLAY) button.

(4) To escape from DELETE Menu, select EXIT option and to escape from Main Menu, press  (MENU) button.



## ● Formatting

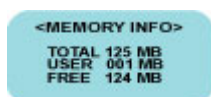
It is possible to format system/memory of a player. (All the files will be deleted)

Select FORMAT and then select “YES” in File menu and the formatting is started.



\* After formatting, VOICE folder will be created automatically.

## MEMORY INFO



TOTAL : Displays the total memory size.

USED : Displays the used memory size.



FREE : Displays the available memory size.

## USER EQ

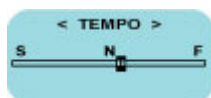


In addition to 5-preset EQs, a user can adjust EQ level.

(Adjusting Bass/Treble values)

To Switch over between T and B, use the  (REW,FF) button and to change the level, use the  (VOLUME) button.

## TEMPO



You can adjust playing file' s tempo.

Moving to S is getting playing tempo slower and moving to F is getting to faster. (N is normal tempo). (VOL- : moving to S ,

VOL+ : moving to F)

## RESUME



When ON, the player resumes to previous place in song after Power Off.

The values adjusted in Settings mode are saved. (Only in the case normally power is turned off.)

**Note)** After deleting files, formatting or connecting into a PC, RESUME is set to OFF automatically,

## SLEEP TIME

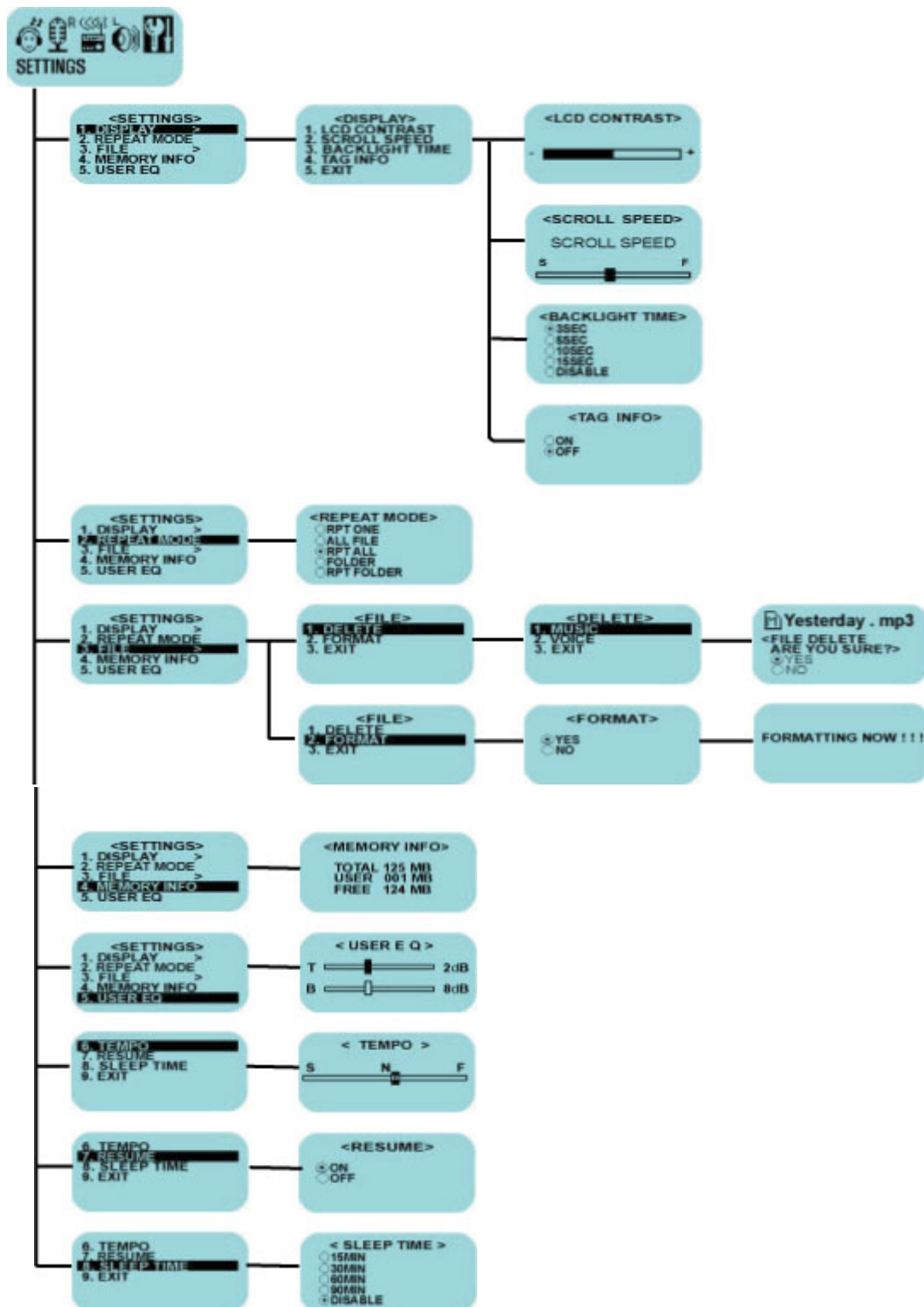


Default value is set to **DISABLE**.

15, 30, 60 or 90 minutes can be set.

Automatically turns power off after a fixed time even though playing music or listening to the Radio.

## Menu Chart



## 6. Remarks

### Precaution

- Do not drop the player or apply any sudden/severe impact (Shock is a major cause of breakdown).
- Be sure to take out the battery if the player will not be used for a long time.
- Avoid exposure to dust, moisture, magnetic fields, direct sunlight or heat.
- Please avoid static Electricity. If this happens, turn the player off and on again.
- Do not disassemble the player.
- Do not listen to the player with a high volume level for a long period of time. It may damage your hearing.
- Do not listen to the player when driving a car, motorcycle, or bicycle.
- Do not listen to the player with a high level volume at a crosswalk.
- When separating the player from your PC, be sure to follow the instructions in section “Disconnecting from a PC” ; especially in a Windows environment.

## Product Specification

<b>Model</b>		DG-150
<b>Size</b>		28.4 * 94.2 * 26.6mm (W X L X H)
<b>Weight</b>		38g (without battery)
<b>Memory</b>		(128MB/256MB/512MB) built in Memory
<b>Battery</b>		AAA type battery * 1EA
<b>Audio Output</b>	<b>Earphones</b>	6.0 mW / 16Ω
	<b>S/N Ratio</b>	90 dB
	<b>Output Frequency</b>	20 Hz ~ 20 KHz
<b>FM</b>	<b>Earphones</b>	6.0 mW / 16Ω
	<b>S/N Ratio</b>	50 dB
	<b>Output Frequency</b>	88 MHz ~ 108 MHz
<b>Voice-Recording</b>		Approx. 17 hrs - (256MB ,ADPCM)
<b>LCD</b>		Graphic 3 Line with Backlight
<b>Language</b>		Multi-Languages (Korean, English, Chinese, Japanese)
<b>Download Speed</b>		4 Mbps (Depending on PC)
<b>Max. Playing Time</b>		Approx. 10 hrs (128 kbps, MP3, 20 Volume, Normal EQ)
<b>Operating Temperature</b>		0 ~ 40 °C
<b>USB</b>		Supporting USB 1.1 (Plug & Play)
<b>OS</b>		Wind98/SE(with driver) , WindME/2000/XP , Mac 9.0 or above

## Trouble Shooting

If you have any problem in the player, please check the following instructions first.

- **Can not turn power on**

- Check whether the battery is exhausted.
- Check whether the battery is installed correctly by matching polarity to the player.

- **Dose not work when pressing the button**

- Check whether the Hold switch is set (Hold->)..

- **Screen on LCD stops**

- Turn Power On/Off.

If this problem persists, disassemble the battery case from main body and than combine two parts after several minutes.

- **No Sound or Noise**

- Check whether plug connected firmly or is dirty.
- Corrupted MP3 or WMA files may make a static noise and the sound may cut off.  
Check the sound with other files.

- **Failed download MP3 files from a PC**

- Check the connection between a PC and main body of the player.
- Disconnect and connect USB port again.
- In Windows98/SE, Check whether the correct driver for Windows98/SE is installed.
- In Windows ME/2000/XP, Check Windows Update and re-booting a PC and connect again.

**CAUTION:** Changes or modifications not expressly approved by the manufacturer responsible for compliance could void the user's authority to operate the equipment

**WARNING**

This device complies with part 15 of the FCC Rules. Operation is subject to the following two conditions: (1) This device may not cause harmful interference, and (2) this device must accept any interference received, including interference that may cause undesired operation.

**INFORMATION TO USER:**

This equipment has been tested and found to comply with the limit of a Class B digital device, pursuant to Part 15 of the FCC Rules. These limits are designed to provide reasonable protection against harmful interference in a residential installation. This equipment generates, uses and can radiate radio frequency energy and, if not installed and used in accordance with the instructions, may cause harmful interference to radio communications. However, there is no guarantee that interference will not occur in a particular installation; if this equipment does cause harmful interference to radio or television reception, which can be determined by turning the equipment off and on, the user is encouraged to try to correct the interference by one or more of the following measures:

1. Reorient / Relocate the receiving antenna.
2. Increase the separation between the equipment and receiver.
3. Connect the equipment into an outlet on a circuit different from that to which the receiver is connected.
4. Consult the dealer or an experienced radio/TV technician for help