



QUICK START GUIDE

BLUETOOTH HEADSET

CHARGING THE HEADSET

⚡ Charge the headset before using it for the first time.

🕒 Plug in the cable to the micro USB port and charge for at least 2 hours.



Connect the charging cable to charging port.



PAIRING YOUR HEADSET

Your headset will work best if it is within 33 ft. of your smart device. You may experience sound briefly cutting off if you are out of range or if your wireless connection is weak. Make sure Bluetooth is enabled on your smart phone or tablet before starting the pairing process.

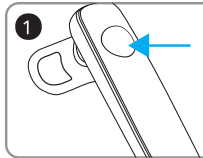


QUICK START GUIDE

BLUETOOTH HEADSET

PAIRING YOUR HEADSET (continued)

Make sure the headset is turned off before attempting to pair it with a smart phone or tablet.



Press and hold the "Multifunction" button for 6 seconds to turn on the headset and you see the light flash red and blue. This indicates that your headset is ready to pair.



From your smart device, find a list of nearby devices and choose "FB-32". Enter "0000" if asked.



QUICK START GUIDE

BLUETOOTH HEADSET

CONNECTION LOST?

- If pairing the headset does not work, turn off the headset and repeat the steps again in "Pairing your Headset."
- Make sure your headset is within range of your smart device.
- If the headset fails to turn on, check to see if the battery is charged. Connection may be lost due to low battery.
- When charging your headsets, only use the enclosed USB cable.

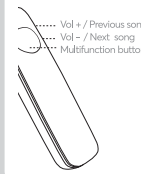
MULTIFUNCTION BUTTON / VOLUME CONTROLS

Dialing Through Your Phone: Select the relevant contact from your list of contacts on your device. Press the call button on your phone and call.

Answer/End Call: Press Multifunction button once to answer and incoming call or end a call.

Redial: Click the multifunction button twice to redial the last number dialed.

Reject Call: Press and hold Multifunction button for 2 seconds to reject a call.



QUICK START GUIDE

BLUETOOTH HEADSET

SPECIFICATIONS

Operating Distance:	Up to 33ft (10m)
Talk Time:	Up to 3 Hours
Standby Time:	Up to 80 Hours
Charging Time:	Up to 2 Hours
Charging Interface:	Micro USB
USB Charging Cable Included	
Battery Type:	Polymer Battery
Battery Capacity:	55mA
BT ID:	D030500
FCC ID:	2AANZ32



QUICK START GUIDE

QUARTZ PRO WIRELESS HEADPHONES

FCC STATEMENT

This device complies with part 15 of the FCC Rules. Operation is subject to the following two conditions: (1) This device may not cause harmful interference, and (2) this device must accept any interference received, including interference that may cause undesired operation.

Please note that changes or modifications not expressly approved by the party responsible for compliance could void the user's authority to operate the equipment.

FCC INSTRUCTIONS FOR A CLASS B DIGITAL DEVICE OR PERIPHERAL

Note: This equipment has been tested and found to comply with the limits for a Class B digital device, pursuant to part 15 of the FCC Rules. These limits are designed to provide reasonable protection against harmful interference in a residential installation. This equipment generates, uses and can radiate radio frequency energy and, if not installed and used in



QUICK START GUIDE

QUARTZ PRO WIRELESS HEADPHONES

accordance with the instructions, may cause harmful interference to radio communications. However, there is no guarantee that interference will not occur in a particular installation. If this equipment does cause harmful interference to radio or television reception, which can be determined by turning the equipment off and on, the user is encouraged to try to correct the interference by one or more of the following measures:

- Reorient or relocate the receiving antenna.
- Increase the separation between the equipment and receiver.
- Connect the equipment into an outlet on a circuit different from that to which the receiver is connected.
- Consult the dealer or an experienced radio/TV technician for help.

RF warning statement:

The device has been evaluated to meet general RF exposure requirement. The device can be used in portable exposure condition without restriction.