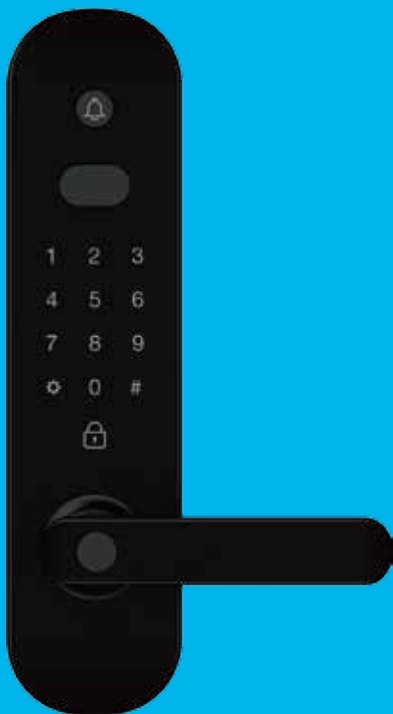


BOLT

powered by Quirky



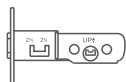
Secure WiFi Door Knob **User Manual**

Please read this manual carefully before use

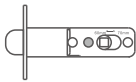
WHAT'S INCLUDED

For Smart Lock Installation

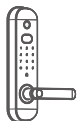
Please check the list of parts



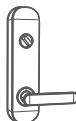
Deadbolt



Latchbolt



Exterior Assembly



Interior Assembly



Mounting Plate



Deadbolt
Strike Plate



Latchbolt
Strike Plate



Mounting Plate
Screws x62mm



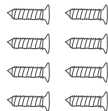
Mounting Plate
Screws x45mm



Mounting Plate
Screws x35mm



Assembly Screws



Strike Screws



Square Steel



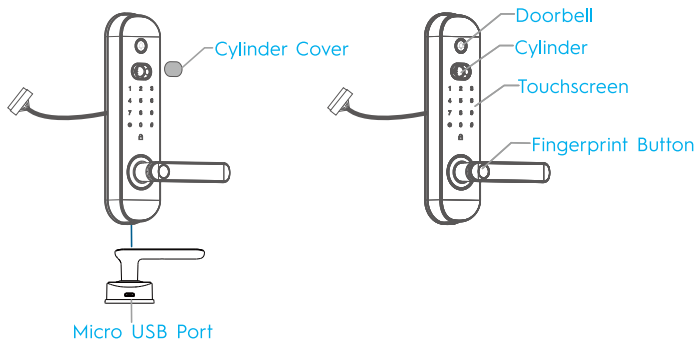
Battery



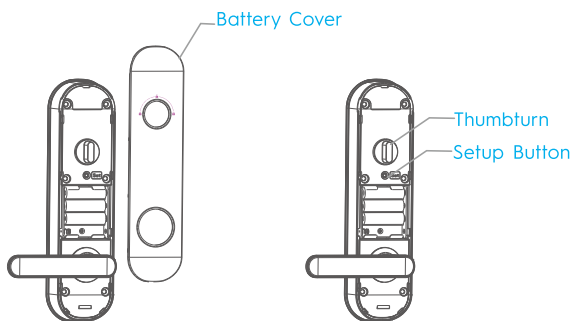
Keys

OVERVIEW

Front View



Rear View



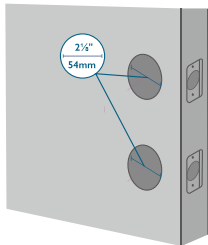
OPERATING INSTRUCTIONS

1. Make sure that the lock can be installed properly:

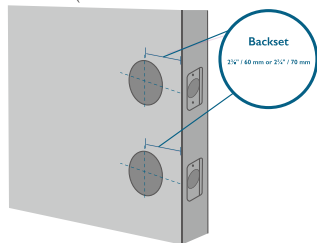
- ① Check the door status. Make sure the doorframe is aligned with the door.
- ② There are no obstructions stuck in the doorframe.
- ③ Leave enough space for the deadbolt to extend into the doorframe when the door is locked.

2. Check your door / frame dimensions to make sure that it fits the following dimensions:

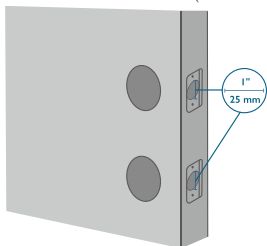
The crossbore diameter ($2\frac{1}{8}$ " / 54 mm)



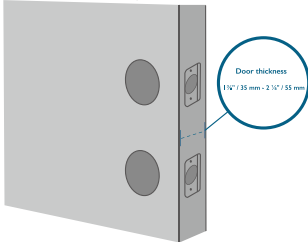
Backset ($2\frac{3}{8}$ " / 60 mm or $2\frac{3}{4}$ " / 70 mm)



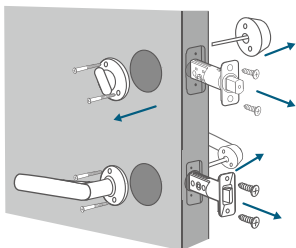
Diameter of door hole (1" / 25 mm)



Door thickness ($1\frac{3}{8}$ " / 35 mm - $2\frac{1}{8}$ " / 55 mm)



3. if you have an existing lock, remove it, including the bolt.

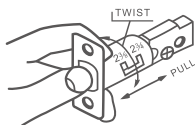
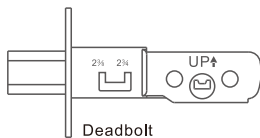


INSTRUCTIONS THE SMART LOCK

Install the Deadbolt

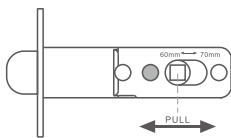
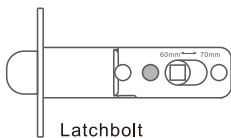
To install deadbolt:

1. Measure your door's backset dimension: whether it is $2\frac{3}{4}$ " / 70 mm or $2\frac{3}{8}$ " / 60 mm.
2. If your door's backset dimension is $2\frac{3}{8}$ " / 60 mm, use the provided deadbolt to install.



Install the Latchbolt

1. Measure your door's backset dimension: whether it is $2\frac{3}{4}$ " / 70 mm or $2\frac{3}{8}$ " / 60 mm.
2. If your door's backset dimension is $2\frac{3}{8}$ " / 60 mm, use the provided deadbolt to install.



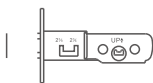
Installing Deadbolt and Latchbolt

If you have an existing strike plate installed, skip this step.

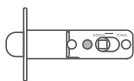
To install strike plate:

Align the strike plate with the center hole of the deadbolt or latchbolt.

Get the following parts ready for installation.



Deadbolt



Latchbolt

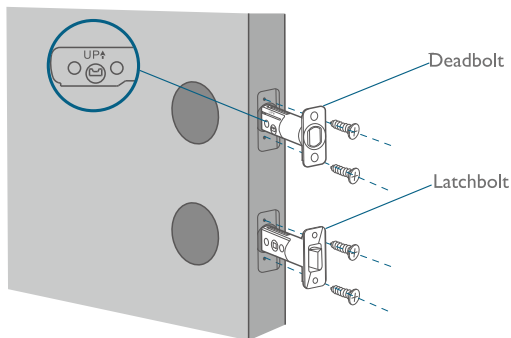


Deadbolt Screws /
Strike Screws x4



Screwdriver

- Pay attention to the direction of deadbolt UP↑.
- Pay attention to the orientation of the latchbolt tongue .



Installing Latchbolt or Deadbolt Strike Plate

Get the following parts ready for installation.



Deadbolt Strike Plate



Latchbolt Strike Plate

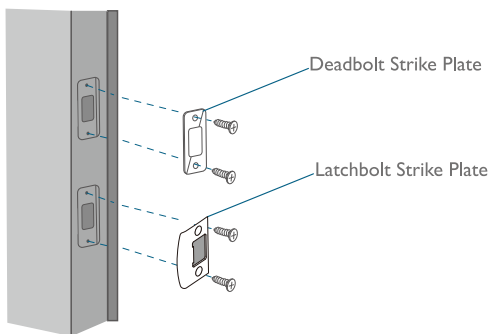


Strike Screws x4



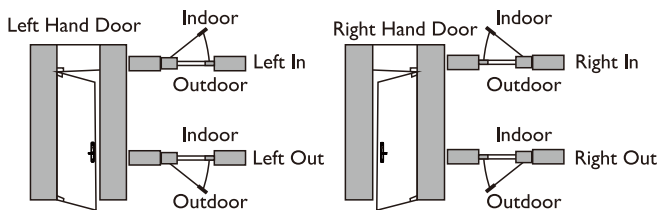
Screwdriver

- Note the orientation of the latch bolt strike plate



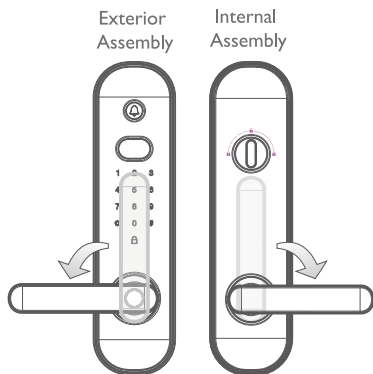
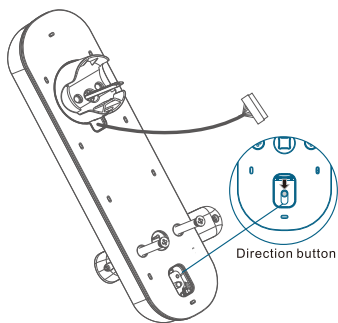
Confirm The Direction of The Door

This smart lock is suitable for (Left Out/Left In/ Right Out/Right In) 4 Kinds of door opening directions.



Adjust the direction of the latch bolt

- Please confirm the door opening direction and adjust the handle direction.
- The direction button is at the bottom of the back.
- Press and hold the button and rotate the handle 180 degrees.

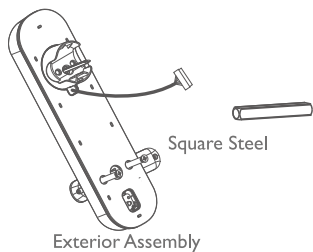


To install the exterior assembly into the doorframe:

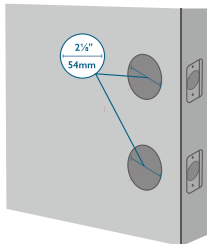
Measure your crossbore dimension and determine the installation steps accordingly.

Confirm that (deadbolt / latchbolt) borehole is ($2 \frac{1}{8}$ " / 54 mm) :

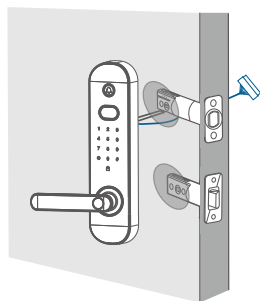
What is required: Square Steel, Exterior Assembly



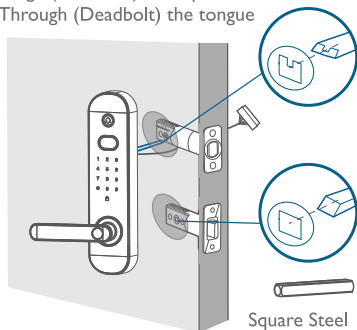
The crossbore diameter ($2 \frac{1}{8}$ " / 54 mm)



Through cable



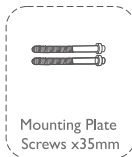
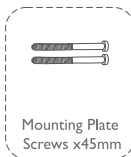
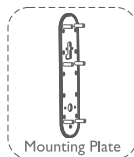
Through (Latchbolt) the Square Steel
Through (Deadbolt) the tongue



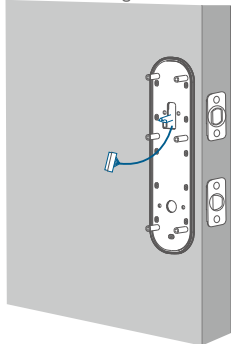
Install the Mounting Plate

1. Route the cable through the mounting plate.
2. Fix the mounting plate into the interior doorframe using the mounting plate screws. Make sure the screws go through the holes of the deadbolt and the mounting plate, and lock into place. If the mounting plate fits perfectly with the door, go to next step.
3. If the mounting plate is not fastened tightly to the door, use an additional screw.
4. Please check your door's thickness, if the thickness is 35-45mm, please use x35, if the thickness is 45-55mm, please use x45.

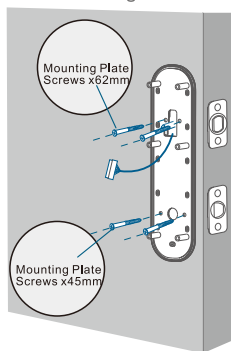
What is required: Mounting Plate, Mounting Plate Screws, Deadbolt Screw / Strike Screw, Screwdriver (not provided)



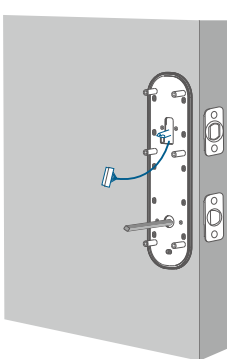
STEP: ①
Install Mounting Plate



STEP: ②
Install Mounting Plate Screws



STEP: ③
Check the installation effect



Install the Interior Assembly

- 1 .Connect the cable wires to the interior assembly;
- 2 .Insert (deadbolt) the tongue and (latchbolt) square steel into the corresponding borehole of interior assembly;
- 3 .Pay attention to adjust the interior assembly cable during installation;

What is required: Interior Assembly, Interior Assembly Screws x6pcs.



Interior Assembly

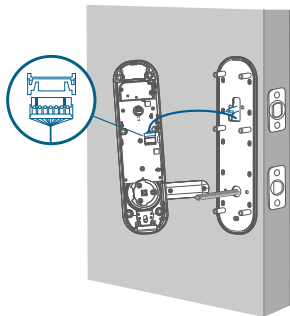


Interior Assembly
Screws x6



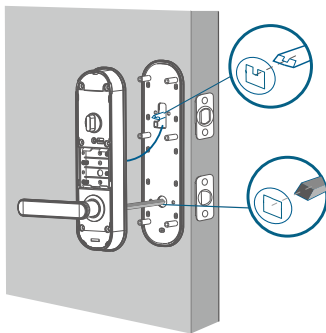
STEP: ①

Connect the cable socket



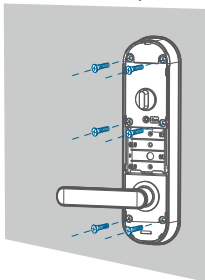
STEP: ②

Through (Latchbolt) the Square Steel
Through (Deadbolt) the tongue



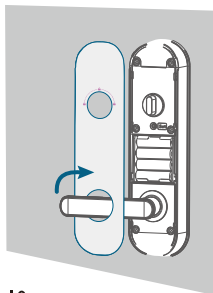
STEP: ③

Interior interior Assembly Screws



STEP: ④

Interior Battery Cover



Install Batteries

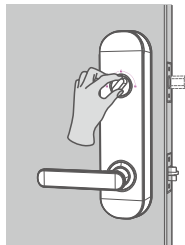
Insert four AA batteries into the battery compartment matching the polarity (+/-) indicated.

1. Turn the switch thumbturn 5 times. Check the deadbolt telescopic direction; Turn the switch thumbturn will automatically set the direction.
2. Turn the handle to check the latch bolt and fingerprint;

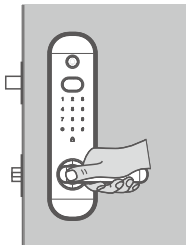


Battery

STEP: ①

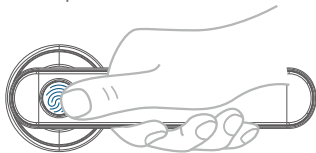


STEP: ②



SET A FINGERPRINT OR PASSWORD

Once batteries are installed, you will be prompted to input a 6 to 8 digital administrator password. After that you may choose to register a fingerprint; You shall input the fingerprint for 8 times. Each time you input a fingerprint successfully, the corresponding number will light on. For example, you successfully input fingerprints for 8 times, the number 8 will light on, and number 1~8 are lighted; After the previous operation, press # to confirm.



NETWORKING SETTINGS

Please make sure the WiFi network works properly.

1. Open the quirky app and sign in.
2. Select WiFi network, enter advanced administrator password, and follow the prompts.
3. Press the smart door lock 3# to enter the networking mode, and the (LED 8) on the touch panel will flash.
4. After completing the previous step, the intelligent door lock will enter the networking state.
5. WiFi network is completed, and the intelligent door lock sends out a prompt tone.

GETTING STARTED

Download Quirky App

Download the Quirky App from the App Store (iOS devices running version 10.2 and later versions) or Google Play (Android devices running version 5.0 and later versions).



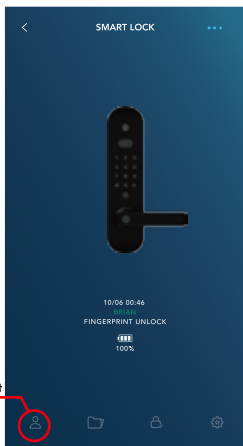
Scan Code



Download the Quirky app
to set up your new Quirky Bolt.

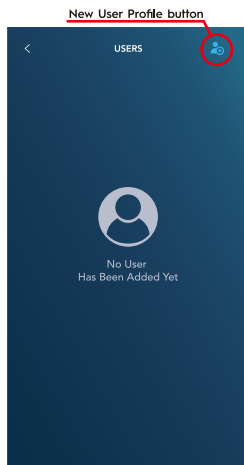


APP CONFIGURATION - ADDING USERS



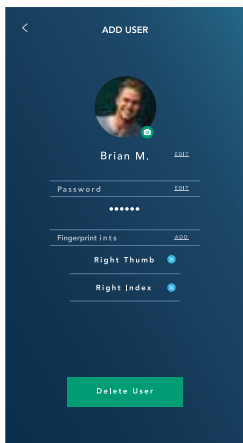
User management

1. Open the APP, enter the User management.

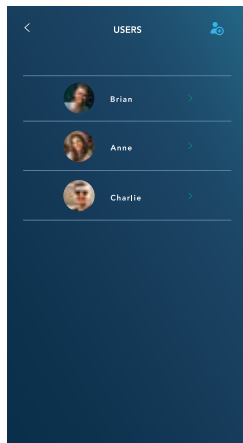


New User Profile button

2. Next, click on the New User Profile button located on the upper right of the screen.

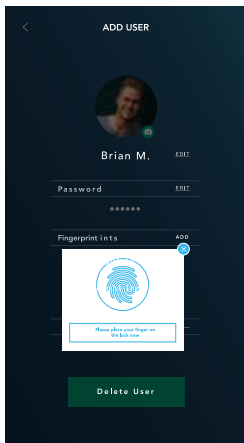


3. Fill out user profile.

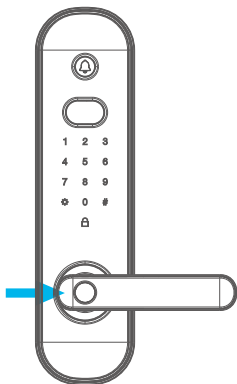


4. Create up to 3 user profiles.

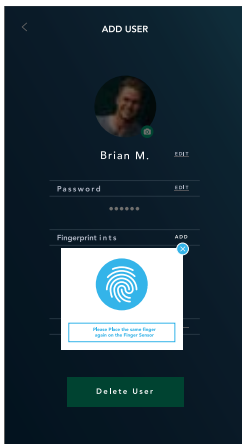
SCANNING FINGERPRINT



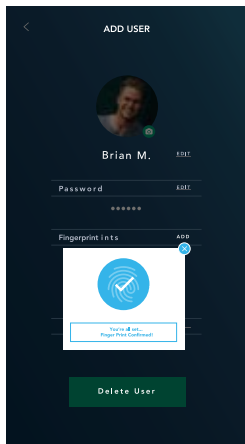
1. Click "ADD" under Fingerprints when in the desired user profile and follow the pop-up window instructions.



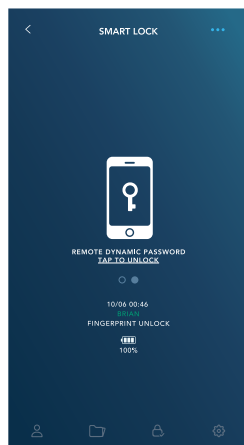
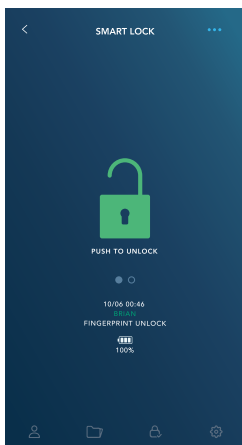
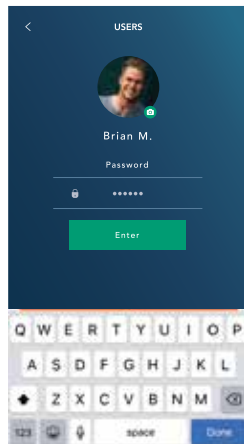
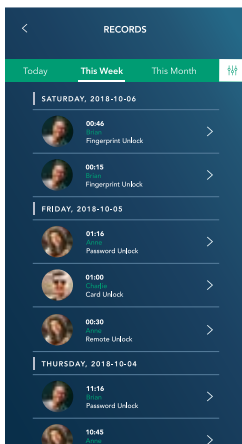
2. Firmly place your finger/thumb over the small circle on the handle to scan your fingerprint.



3. Repeat the process 8 times to ensure a good scan. Be sure not to move your finger while scanning.



4. Once done correctly, a check mark will appear confirming the fingerprint is scanned.



SPECIFICATIONS

Chipset: Realtek lower-power SOC 2.4G WIFI;

Maximum access code, Maximum fingerprint inputs:100

Senior administrator: Password x1,Fingerprint x1;

Numeric keypad: touchscreen keypad

Lock material: zinc alloy

Battery: 4 × AA batteries

Battery life: 200 days (if open and close the door for 10 times per day)

Autolock period: App lock, keyboard lock, automatic timing lock;

Battery voltage indication: When the voltage is lower than 4.8V, the system will give a prompt;

Other Settings: Input password or fingerprint error, the system will automatically lock (180 seconds by default);

Initialization password:1234567890

Restore Factory Settings: Press the set button for 3-5 seconds and input the password according to the prompt tone to complete the setting;

When you register a fingerprint through the APP, there are 90s of waiting time, If successful, quit directly. Otherwise, the lock will report errors; When adding a fingerprint or password, you need to press 5# in the keyboard; Anti-peeping Password: Random password added before or after the correct password, it also can unlock as long as the real password keep continuously correct. (Anti-peeping password can not exceed 20 digits);

INTRODUCTION TO KEYBOARD FUNCTIONS

According to the keyboard prompt, the user carries on the corresponding function setting;

The intelligent door lock will send out the corresponding prompt voice;

3 # . Matching network

5# . Add password or fingerprint

6# . Delete password or fingerprint

7# . Modify Password

9# . System upgrade status, OTA upgrade the smart door lock as required

006# . Change motor direction

1 2 3

4 5 6

7 8 9

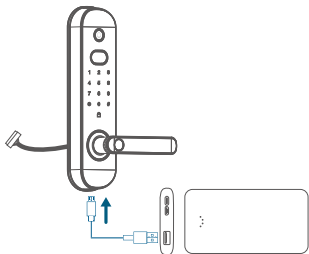
⚙ 0 # ----- Confirm button

----- Back button

🔒 ----- Lock button

TROUBLESHOOTING

1. How can I unlock the door if the smart lock doesn't work?
 - ① Reset the smart lock.
 - ② Use the provided key to unlock.
2. How can I unlock the door if the smart lock battery runs low?
 - ① Insert a micro USB cable into the micro USB port and use a battery to charge the smart lock.



FCC STATEMENT

This equipment has been tested and found to comply with the limits for a Class B digital device, pursuant to part 15 of the FCC Rules. These limits are designed to provide reasonable protection against harmful interference in a residential installation. This equipment generates uses and can radiate radio frequency energy and, if not installed and used in accordance with the instructions, may cause harmful interference to radio communications. However, there is no guarantee that interference will not occur in a particular installation. If this equipment does cause harmful interference to radio or television reception, which can be determined by turning the equipment off and on, the user is encouraged to try to correct the interference by one or more of the following measures:

- Reorient or relocate the receiving antenna.
 - Increase the separation between the equipment and receiver.
 - Connect the equipment into an outlet on a circuit different from that to which the receiver is connected.
 - Consult the dealer or an experienced radio/TV technician for help
- Changes or modifications not expressly approved by the party responsible for compliance could void the user's authority to operate the equipment.

This device complies with Part 15 of the FCC Rules. Operation is subject to the following two conditions:

(1) this device may not cause harmful interference, and (2) this device must accept any interference received, including interference that may cause undesired operation.

RF Exposure Warning Statements:

This equipment complies with FCC radiation exposure limits set forth for an uncontrolled environment. This equipment shall be installed and operated with minimum distance 20cm between the radiator & body.

FCC ID: 2AANZBOLT

WARRANTY

This product is covered by a 90-day limited warranty. For details, please contact customer service at:

support1@quirky.com