

Shenzhen Lingdong Intelligent Technology Co., Ltd

TD01

Customer:

Sample Name: Bluetooth Music&APP

Sample Number: TD01

Signature:

DATE:

TESTED BY	CHECKED BY	APPROVED BY
MARK	WELL	JIAN

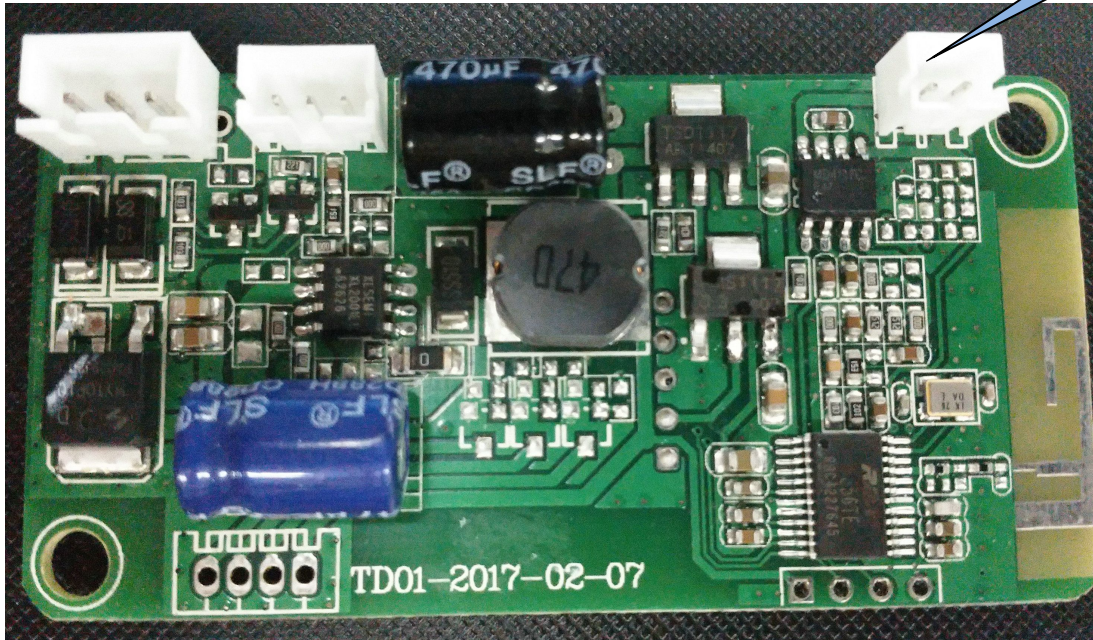
Customer Signature:

TESTED BY	CHECKED BY	APPROVED BY

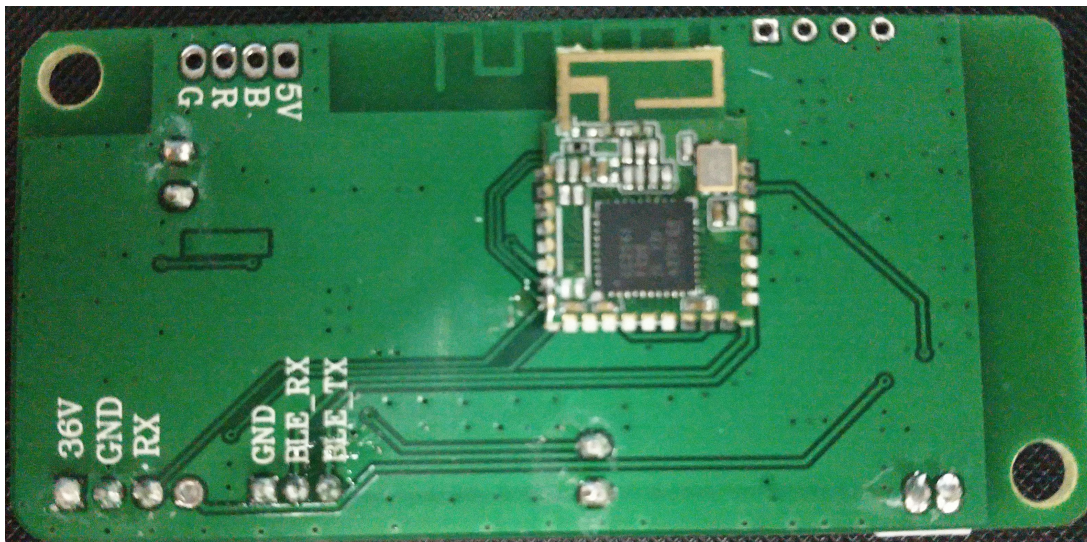
PCB 尺寸: 69.0mm*35.0mm*1.6mm

Top layer

Speaker
2.0mm X2



Bottom layer



Function:

- 1、 BLE APP;
- 2、 Bluetooth Music;
- 3、 Mono Output;

Port specification:

Power input

36V: Power Input

GND: Power Ground

RX: UART TX Input

Speaker :Speaker Output

BLE UART Port:

GND: UART Ground

BLE_RX: UART RX

BLE_TX: UART TX

RGB LED Port:

B: Blue light signal output

G: Green light signal output

R: Red light signal output

5V: 5V Power Output

Product specification:

Input voltage range: 12V~42.5V

Hardware version: V4.0(APP)+V4.2 (MUSIC)

Speaker Spec: 4Ω 3W、2Ω 5W

Operating Ambient Temperature: -20 ~ +80℃

Frequency: 2.402GHz~2.480GHz

FCC Warning: Changes or modifications to this unit not expressly approved by the party responsible for compliance could void the user's authority to operate the equipment.

NOTE: This equipment has been tested and found to comply with the limits for a Class B digital device, pursuant to Part 15 of the FCC Rules. These limits are designed to provide reasonable protection against harmful interference in a residential installation. This equipment generates, uses and can radiate radio frequency energy and, if not installed and used in accordance with the instructions, may cause harmful interference to radio communications.

However, there is no guarantee that interference will not occur in a particular installation. If this equipment does cause harmful interference to radio or television reception, which can be determined by turning the equipment off and on, the user is encouraged to try to correct the interference by one or more of the following measures:

- ⌘ Reorient or relocate the receiving antenna.
- ⌘ Increase the separation between the equipment and receiver.
- ⌘ Connect the equipment into an outlet on a circuit different from that to which the receiver is connected.
- ⌘ Consult the dealer or an experienced radio/TV technician for help.

This device complies with Part 15 of the FCC Rules. Operation is subject to the following two conditions : (1) this device may not cause harmful interference, and

(2) this device must accept any interference received, including interference that may cause undesired operation.