

Shenzhen Lingdong Intelligent Technology Co., Ltd

2AANZMODB-ECL

Customer:

Sample Name: BT Module

Sample Number: 2AANZMODB-ECL

Signature:

DATE:

TESTED BY	CHECKED BY	APPROVED BY
MARK	WELL	JIAN

Customer Signature:

TESTED BY	CHECKED BY	APPROVED BY

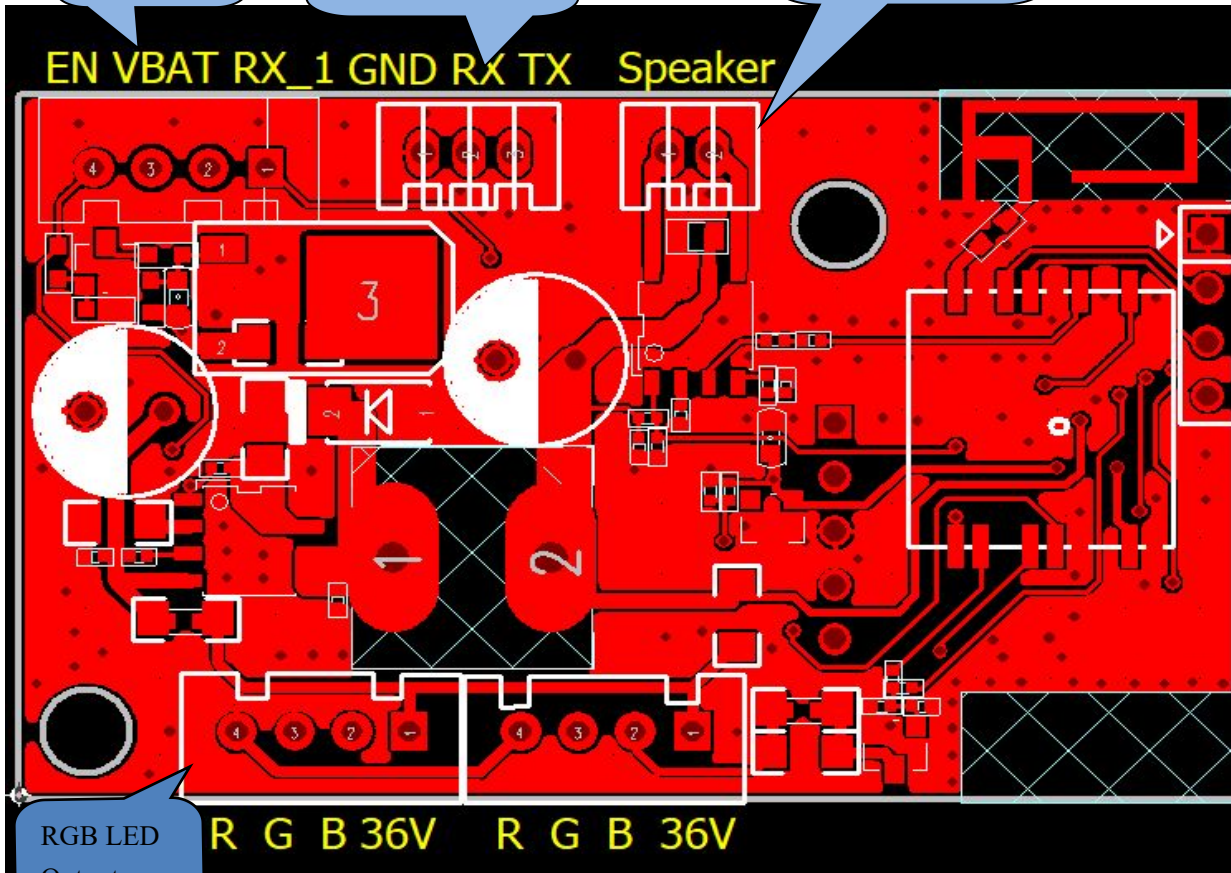
PCB Size: 54.0mm*33.0mm*1.6mm

Power input
2.54mm X4

BLE APP UART
2.0mm X3

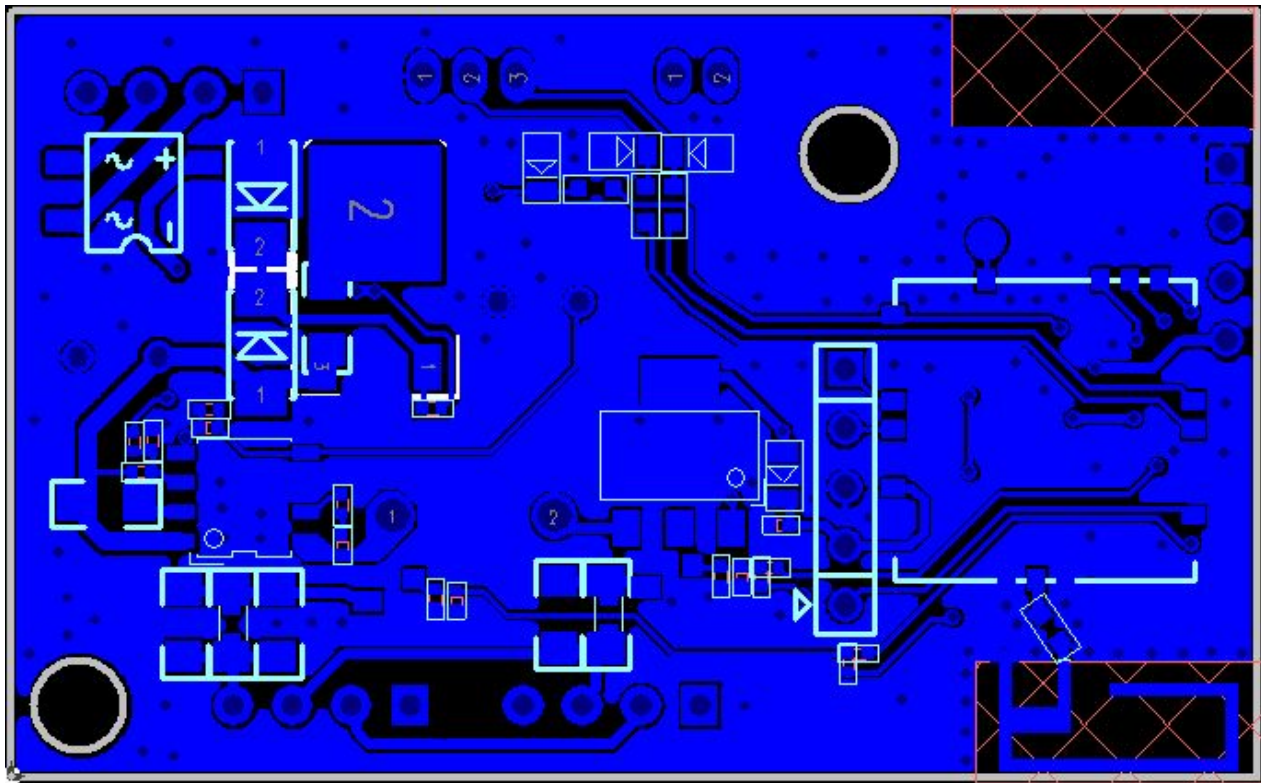
Speaker Output
2.0mm X2

TOP Layer



RGB LED
Output
2.54mmX4

Bottom layer



Function:

- 1、Driving 36V RGB LED;
- 2、Bluetooth Music&APP;
- 3、Mono Output;

Port specification:

Power input

EN: Enable input boot up

VBAT: Power &Ground Input

RX_1: UART TX Input

BLE APP UART:

GND:Power Ground

RX:BLE UART RX

TX:BLE UART TX

Speaker :Speaker Output

RGB LED Port:

R: Red light signal output

G: Green light signal output

B: Blue light signal output

36V: 25V-42V Power Output

Product specification:

Input voltage range: 15V~42.5V

Enable input voltage range: 3.3V~5V

Hardware version: V2.12

Speaker Spec: 4Ω 3W、2Ω 5W

Operating Ambient Temperature: -20 ~ +80°C

Frequency: 2.402GHz~2.480GHz