

Shenzhen Lingdong Intelligent Technology Co., Ltd

TR01

Customer:

Sample Name: Bluetooth Music

Sample Number: TR01

Signature:

DATE:

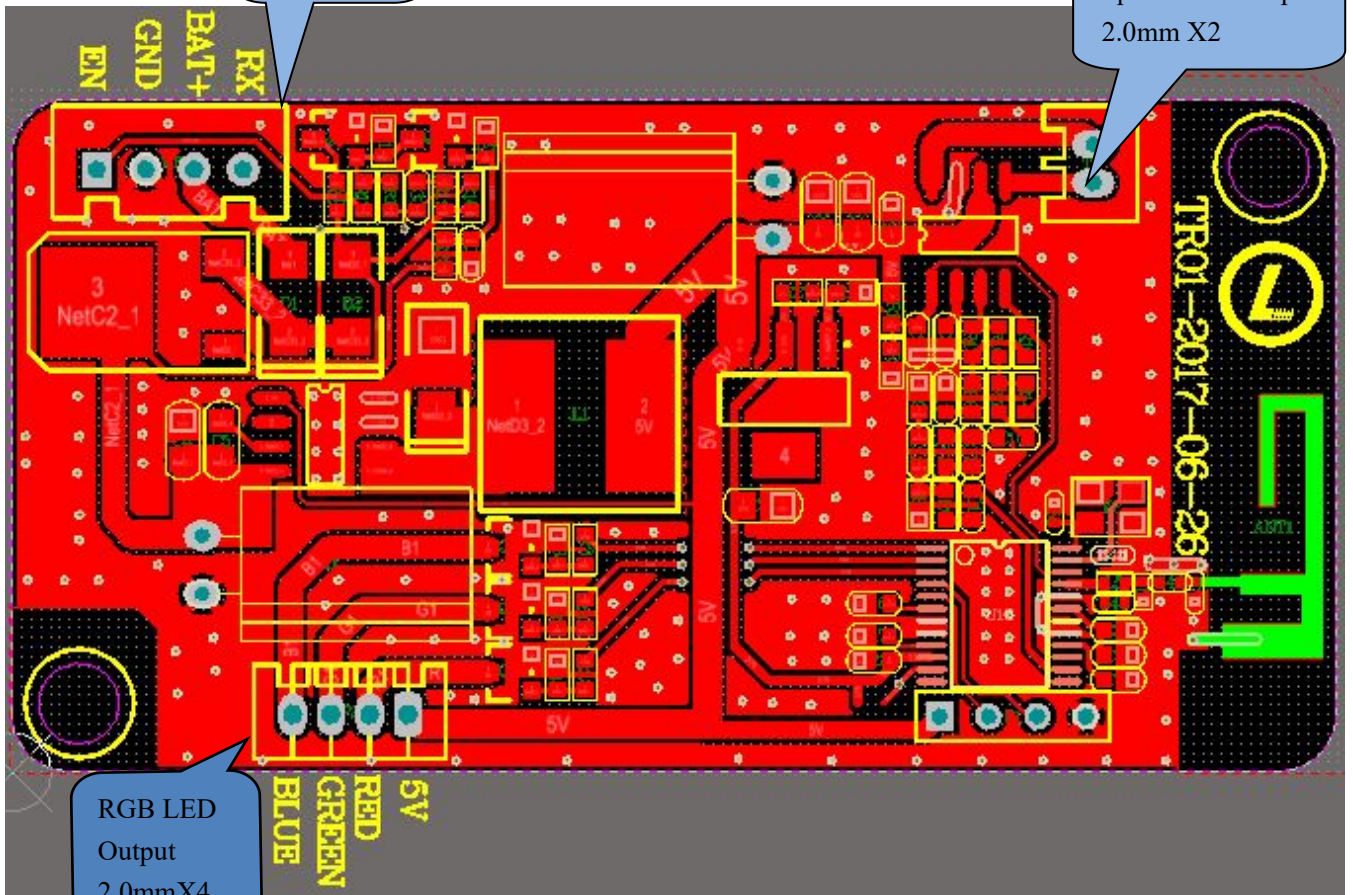
TESTED BY	CHECKED BY	APPROVED BY
MARK	WELL	JIAN

Customer Signature:

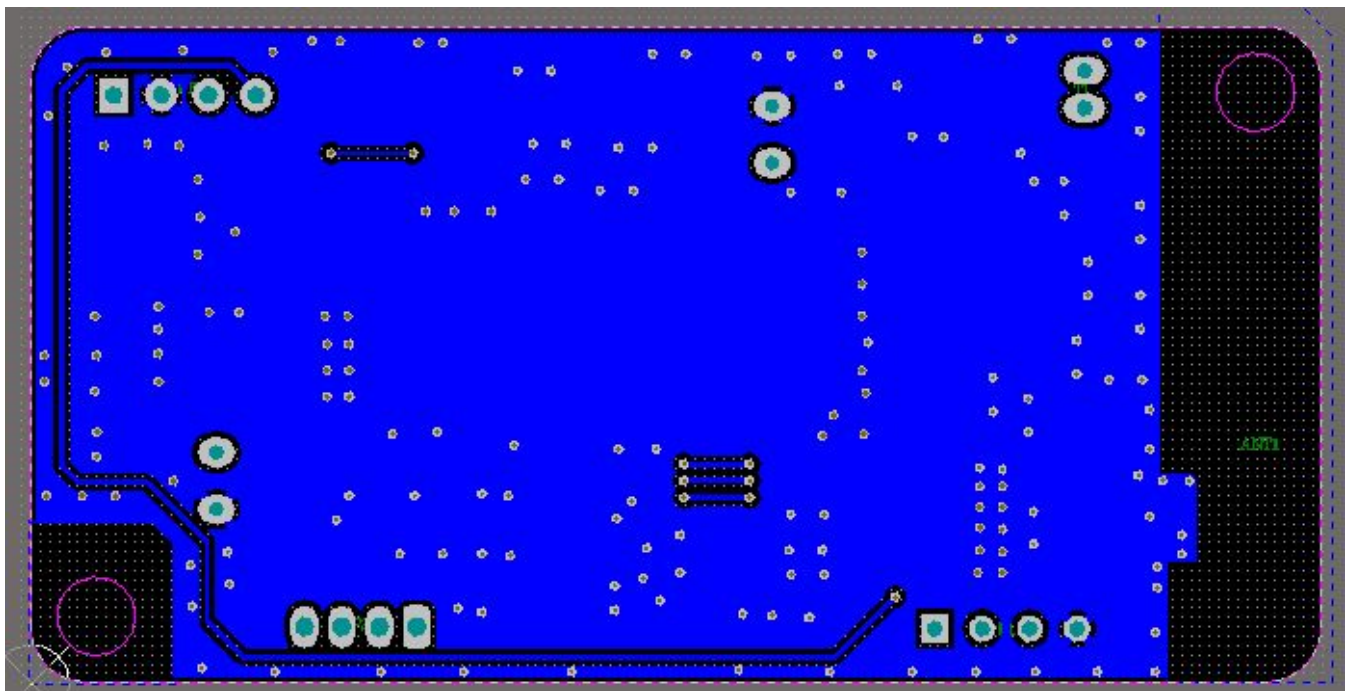
TESTED BY	CHECKED BY	APPROVED BY

PCB Size: 69.0mm*35.0mm*1.6mm

TOP Layer



Bottom layer



Function:

- 1、Driving 5V RGB LED;
- 2、Bluetooth Music;
- 3、Mono Output;

Port specification:

Power input

EN: Enable input boot up

GND: Power Ground

BAT+: Power Input

RX: UART TX Input

Speaker :Speaker Output

RGB LED Port:

BLUE: Blue light signal output

GREEN: Green light signal output

RED: Red light signal output

5V: 5V Power Output

Product specification:

Input voltage range: 12V~42.5V

Enable input voltage range: 3.3V~5V

Hardware version: V4.2 (MUSIC)

Speaker Spec: 4Ω 3W、2Ω 5W

Operating Ambient Temperature: -20 ~ +80℃

Frequency: 2.402GHz~2.480GHz

Warning: Changes or modifications to this unit not expressly approved by the party responsible for compliance could void the user's authority to operate the equipment.

NOTE: This equipment has been tested and found to comply with the limits for a Class B digital device, pursuant to Part 15 of the FCC Rules. These limits are designed to provide reasonable protection against harmful interference in a residential installation. This equipment generates, uses and can radiate radio frequency energy and, if not installed and used in accordance with the instructions, may cause harmful interference to radio communications. However, there is no guarantee that interference will not occur in a particular installation. If this equipment does cause harmful interference to radio or television reception, which can be determined by turning the equipment off and on, the user is encouraged to try to correct the interference by one or more of the following measures:

- ⌘ Reorient or relocate the receiving antenna.
- ⌘ Increase the separation between the equipment and receiver.
- ⌘ Connect the equipment into an outlet on a circuit different from that to which the receiver is connected.
- ⌘ Consult the dealer or an experienced radio/TV technician for help.

This device complies with Part 15 of the FCC Rules. Operation is subject to the following two conditions : (1) this device may not cause harmful interference, and (2) this device must accept any interference received, including interference that may cause undesired operation.