



SERVICE MANUAL

AP-3002AN

IEEE 802.11a/b/g/n/ac 2x2 WirelessLAN USB Client

AP-3002AN
Tentative Edition

Table of Content

i) Notice	1
ii) Safety Information	2
iii) Safety Regulations	2
1. General.....	5
1.1 Model Specification	5
1.2 Operating Specification	5
2. Enclosure Dimension	6
3. AP-3002AN Setup Diagram & Procedures.....	7
3.1 Setup Diagram.....	7
3.2 Setup Procedures.....	7
4. Revision Records.....	10



The material contained in this document is proprietary and for information only and is subject to change without notice. DIGI assumes no responsibility for any errors or damages arising from misinterpretation of any procedure.

Screen displays, operating procedures and supporting features might vary with different software version releases.

This document shall not be reproduced whether in part or whole without the written consent from DIGI SINGAPORE PTE. LTD.

**DIGI SINGAPORE PTE. LTD.
4, Leng Kee Road
#06-01 SIS Building
Singapore 159088**

ii) Safety Information

The operator of the equipment shall comply with the safety and warning indications and procedures outlined in this document. DIGI PTE. LTD. assumes no responsibility or liability for failure to comply with these requirements.

- Repair and servicing of product shall only be carried out by trained and qualified personnel.

Disclaimer:

Specifications are subject to change without notice. All dimensions shown are approximate. Please be aware that DIGI has indicated that its hardware and software used in the product may require additional updates in the future as our product is continually under development. The need for such updates most likely applies to the Printer software.



CAUTIONS:

FOR PLUGGABLE EQUIPMENT, THAT THE SOCKET-OUTLET SHALL BE INSTALLED NEAR THE EQUIPMENT AND SHALL BE EASILY ACCESSIBLE.

**POUR LE MATÉRIEL RACCORDÉ PAR PRISE DE COURANT, LE SOCLE DE PRISE DE COURANT DOIT ÊTRE
INSALLÉ À PROXIMITÉ DU MATÉRIEL ET DOIT ÊTRE AISÉMENT ACCESSIBLE.**

FOR CONTINUED PROTECTION AGAINST RISK OF FIRE, REPLACE ONLY WITH SAME TYPE AND RATING OF FUSE.

**POUR NE PAS COMPROMETTRE LA PROTECTION CONTRE LES RISQUES D'INCENDIE,
REPLACER PAR UN FUSIBLE DE MÊME TYPE ET DE MÊME CARACTÉRISTIQUES
NOMINALES.**

DANGER OF EXPLOSION IF BATTERY IS INCORRECTLY REPLACED. REPLACE ONLY WITH THE SAME OR EQUIVALENT TYPE RECOMMENDED BY THE MANUFACTURER. DISCARD USED BATTERIES ACCORDING TO THE MANUFACTURER'S INSTRUCTIONS

**IL Y A DANGER D'EXPLOSION S'IL Y A REMPLACEMENT INCORRECT DE LA BATTERIE.
REPLACER UNIQUEMENT AVEC UNE BATTERIE DU MÊME TYPE OU D'UN TYPE
RECOMMANDÉ PAR LE CONSTRUCTEUR. METTRE AU RÉBUT LES BATTERIES USAGÉES
CONFORMÉMENT AUX INSTRUCTIONS DU FABRICANT.**

iii) Safety Regulations



Federal Communication Commission Interference Statement

This equipment has been tested and found to comply with the limits for a Class B digital device, pursuant to Part 15 of the FCC Rules. These limits are designed to provide reasonable protection against harmful interference in a residential installation. This equipment generates, uses and can radiate radio frequency energy and, if not installed and used in accordance with the instructions, may cause harmful interference to radio communications. However, there is no guarantee that interference will not occur in a particular installation. If this equipment does cause harmful interference to radio or television reception, which can be determined by turning the equipment off and on, the user is encouraged to try to correct the interference by one of the following measures:

- Reorient or relocate the receiving antenna.
- Increase the separation between the equipment and receiver.

- Connect the equipment into an outlet on a circuit different from that to which the receiver is connected.
- Consult the dealer or an experienced radio/TV technician for help.

FCC Caution: Any changes or modifications not expressly approved by the party responsible for compliance could void the user's authority to operate this equipment.

This device complies with Part 15 of the FCC Rules. Operation is subject to the following two conditions: (1) This device may not cause harmful interference, and (2) this device must accept any interference received, including interference that may cause undesired operation.

IMPORTANT NOTE:

FCC Radiation Exposure Statement:

This equipment complies with FCC radiation exposure limits set forth for an uncontrolled environment. This equipment should be installed and operated with minimum distance 20cm between the radiator & your body. This transmitter must not be co-located or operating in conjunction with any other antenna or transmitter.

Industry Canada statement:

This device complies with Industry Canada's licence-exempt RSSs. Operation is subject to the following two conditions:

- (1) This device may not cause harmful interference, and
- (2) This device must accept any interference received, including interference that may cause undesired operation of the device.

IMPORTANT NOTE:

RF Exposure Statements

This device complies with the ISED RSS-102 RF exposure requirement set forth for an uncontrolled environment and are safe for intended operation as described in this manual. This device is operating in 5.15~5.25GHz frequency range in indoor environment only.

Cet appareil est conforme aux exigences d'exposition RF de l'ISED RSS-102 définies pour un environnement non contrôlé et est sûr pour le fonctionnement prévu comme décrit dans ce manuel. Le fonctionnement sur la bande 5,15-5,25Ghz est limité à une utilisation intérieure uniquement.

Le présent appareil est conforme aux CNR d'Industrie Canada applicables aux appareils radio exempts de licence. L'exploitation est autorisée aux deux conditions suivantes:

- (1) l'appareil ne doit pas produire de brouillage, et
- (2) l'utilisateur de l'appareil doit accepter tout brouillage radioélectrique subi, même si le brouillage est susceptible d'en compromettre le fonctionnement.

CAN ICES-3 (B)/NMB-3(B)

This product meets the applicable Innovation, Science and Economic Development Canada technical specifications.

Ce produit répond aux spécifications techniques applicables à l'innovation, Science et Développement économique Canada.

Caution:

- (i) the device for operation in the band 5150-5250 MHz is only for indoor use to reduce the potential for harmful interference to co-channel mobile satellite systems;
- (ii) the maximum antenna gain permitted for devices in the bands 5250-5350 MHz and 5470-5725 MHz shall be such that the equipment still complies with the e.i.r.p. limit;
- (iii) the maximum antenna gain permitted for devices in the band 5725-5850 MHz shall be such that the equipment still complies with the e.i.r.p. limits specified for point-to-point and non-point-to-point operation as appropriate; and
- (v) Users should also be advised that high-power radars are allocated as primary users (i.e. priority users) of the bands 5250-5350 MHz and 5650-5850 MHz and that these radars could cause interference and/or damage to LE-LAN devices.

Avertissement:

Le guide d'utilisation des dispositifs pour réseaux locaux doit inclure des instructions précises sur les restrictions susmentionnées, notamment :

- (i) les dispositifs fonctionnant dans la bande 5150-5250 MHz sont réservés uniquement pour une utilisation à l'intérieur afin de réduire les risques de brouillage préjudiciable aux systèmes de satellites mobiles utilisant les mêmes canaux;
- (ii) le gain maximal d'antenne permis pour les dispositifs utilisant les bandes de 5250 à 5 350 MHz et de 5470 à 5725 MHz doit être conforme à la limite de la p.i.r.e.;
- (iii) le gain maximal d'antenne permis (pour les dispositifs utilisant la bande de 5 725 à 5 850 MHz) doit être conforme à la limite de la p.i.r.e. spécifiée pour l'exploitation point à point et l'exploitation non point à point, selon le cas;
- (v) De plus, les utilisateurs devraient aussi être avisés que les utilisateurs de radars de haute puissance sont désignés utilisateurs principaux (c.-à-d., qu'ils ont la priorité) pour les bandes 5250-5350 MHz et 5650-5850 MHz et que ces radars pourraient causer du brouillage et/ou des dommages aux dispositifs LAN-EL.

Radiation Exposure Statement:

For body-worn operating conditions please must provide at least 5mm separation between the device and the user's body.

Déclaration d'exposition aux radiations:

Pour les conditions d'utilisation portées par le corps, veuillez assurer une distance d'au moins 5 mm entre l'appareil et le corps de l'utilisateur.

IDA Compliance Statement: (Singapore)

This equipment registered to comply with IDA (Info-Communications Development Authority of Singapore) Standard under Dealer's Class License.

Contact Information:

DIGI America Inc.

76 Veronica Avenu, Somerset, NJ 08873, U.S.A.

TEL: +1-732-828-3633

FAX: +1-732-828-4884

For Taiwan 警語:

依NCC低功率電波輻射性電機管理辦法規定

經型式認證合格之低功率射頻電機，非經許可，公司、商號或使用者均不得擅自變更頻率、加大功率或變更原設計之特性及功能。

低功率射頻電機之使用不得影響飛航安全及干擾合法通信；經發現有干擾現象時，應立即停用，並改善至無干擾時方得繼續使用。前項合法通信，指依電信法規定作業之無線電通信。低功率射頻電機須忍受合法通信或工業、科學及醫療用電波輻射性電機設備之干擾

在 5.25-5.35 赫茲頻帶內操作之無線資訊傳輸設備，限於室內使用
應避免影響附近雷達系統之操作。

報驗義務人: 商進貿易股份有限公司
臺北市中山區民生東路2段35號2樓

The device could automatically discontinue transmission in case of absence of information to transmit, or operational failure. Note that this is not intended to prohibit transmission of control or signalling information or the use of repetitive codes where required by the technology.

1. General

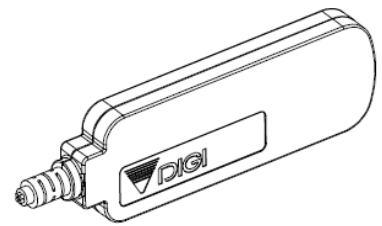
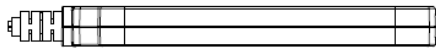
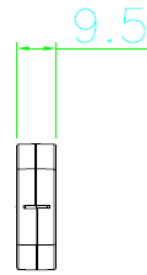
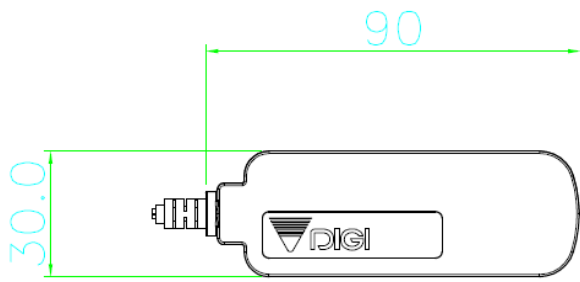
1.1 Model Specification

Model	:	AP-3002AN
Brand Name	:	DIGI
Network Standard	:	IEEE 802.11 a/b/g/n/ac compliant
Dimensions (in mm)	:	Body Casing - 90(L) x 30(W) x 9.5(H) Dimension
Color	:	Dark Brown / White
USB Cable Length	:	1.5 meters (High Speed USB 3.0 Cable with USB Connector Type A)
Weight	:	100g approx.
Operating System	:	Linux
Supported OS	:	Driver support for Windows 10/8/ 7/ 2000/ XP/Vista and Linux OS
Power Source	:	Host PC/USB
Voltage & Current	:	DC 5V, 680mA
Operating Temperature Ranges	:	0°C to +60°C
Operating Humidity	:	85% Max. Non-condensing
USB Interface	:	Support Type A USB2.0/USB3.0
Housing Material	:	Plastic ABS

1.2 Operating Specification

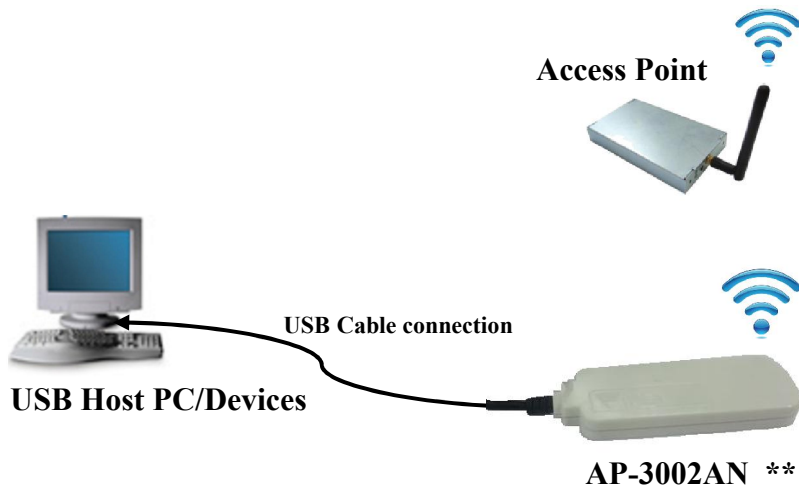
Power Source	:	5VDC Supplied from the Host/PC USB
Operating Temperature	:	0°C to +60°C
Humidity	:	85% Max. Non-condensing

2. Enclosure Dimension



3. AP-3002AN Setup Diagram & Procedures

3.1 Setup Diagram



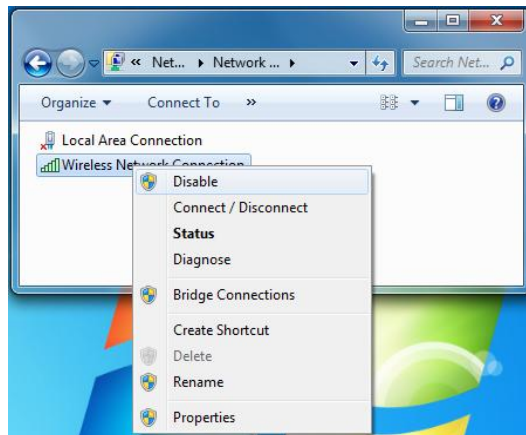
Note: **

This equipment is used for professional environment. AP-300AN should be installed and operated with minimum distance 20cm between the radiator & your body.

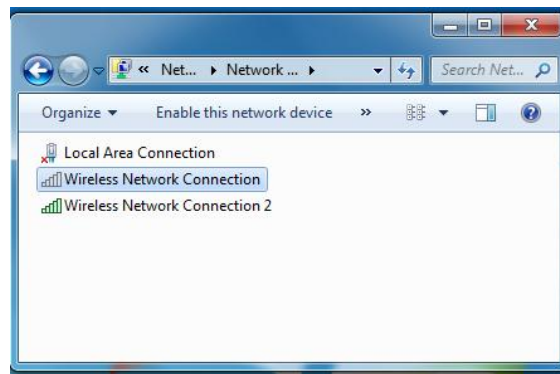
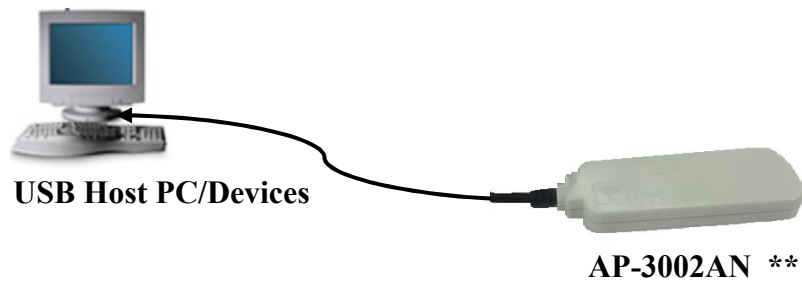
3.2 Setup Procedures

1. Disable the Wireless Network Connection (Wireless adapter) from your PC.

Go to **Control Panel > Network and Internet > Network and Sharing center > View network status and task > Change Adapter settings**. Then right click the **“Wireless Network Connection”** and select **“Disable”**.



2. Attach the AP-3002AN directly into a USB port on your PC. The AP3002AN driver will auto run and install to your PC. A new wireless adapter “Wireless Network Connection” will show.



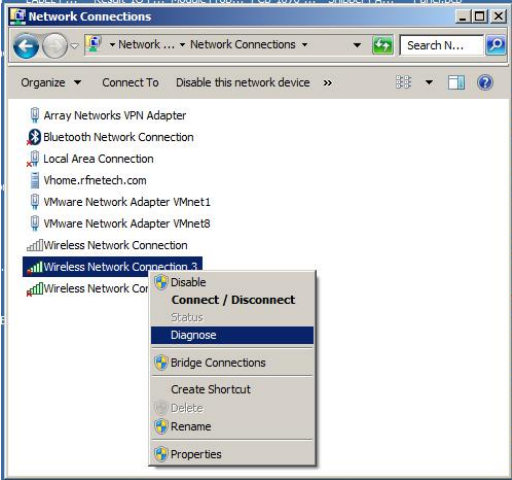
Remark:

Contact your supplier for the technical support, if the driver is required to install manually to support your PC/Host USB equipment.

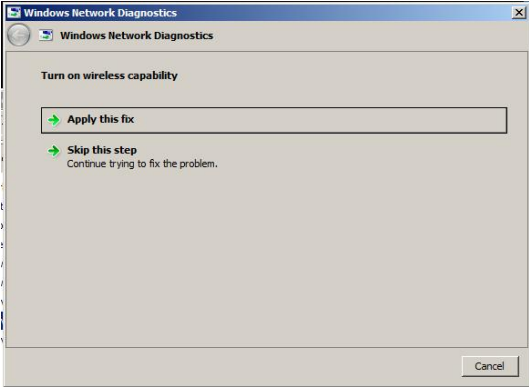
3. Click on “Wireless Network Connection 2”, and then select your desired Access Point to performance wireless connection.



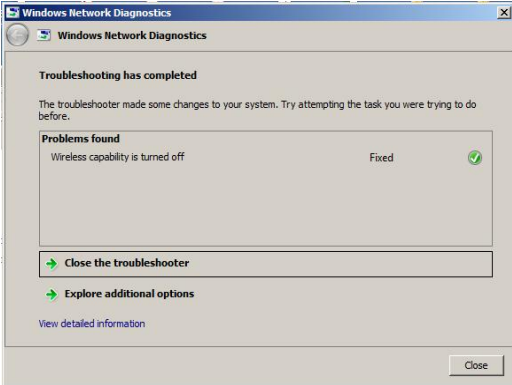
- 4. If you are not able to “enable” your wireless Network Connection, you can “Diagnose” your wireless adaptor, and select “Apply this fix” for resolving the problems.



Select “Diagnose”



Select “Apply this fix”



Close Windows after Troubleshooting has completed

