

MT-3000



User Manual

Copyright

Copyright©2011 Teraoka Seiko Co., Ltd. All rights reserved.

No part of this document may be reproduced, distributed, translated, or stored in any form without the prior written permission of Teraoka Seiko Co., Ltd.

Product specifications are subject to change without prior notice.

Disclaimer

The contents of this document are provided as is. Teraoka Seiko Co., Ltd makes no representations or warranties with respect to the contents herein and specifically disclaims any express or implied warranties of merchantability or fitness for any particular purpose. Teraoka Seiko Co., Ltd reserves the right to revise this document at any time without prior notice.

Federal Communication Commission Interference Statement

This device complies with Part 15 of the FCC Rules. Operation is subject to the following two conditions: (1) This device may not cause harmful interference, and (2) this device must accept any interference received, including interference that may cause undesired operation.

This equipment has been tested and found to comply with the limits for a Class B digital device, pursuant to Part 15 of the FCC Rules. These limits are designed to provide reasonable protection against harmful interference in a residential installation. This equipment generates, uses and can radiate radio frequency energy and, if not installed and used in accordance with the instructions, may cause harmful interference to radio communications. However, there is no guarantee that interference will not occur in a particular installation. If this equipment does cause harmful interference to radio or television reception, which can be determined by turning the equipment off and

on, the user is encouraged to try to correct the interference by one of the following measures:

- Reorient or relocate the receiving antenna.
- Increase the separation between the equipment and receiver.
- Connect the equipment into an outlet on a circuit different from that to which the receiver is connected.
- Consult the dealer or an experienced radio/TV technician for help.

FCC Caution: Any changes or modifications not expressly approved by the party responsible for compliance could void the user's authority to operate this equipment.

This transmitter must not be co-located or operating in conjunction with any other antenna or transmitter.

Radiation Exposure Statement:

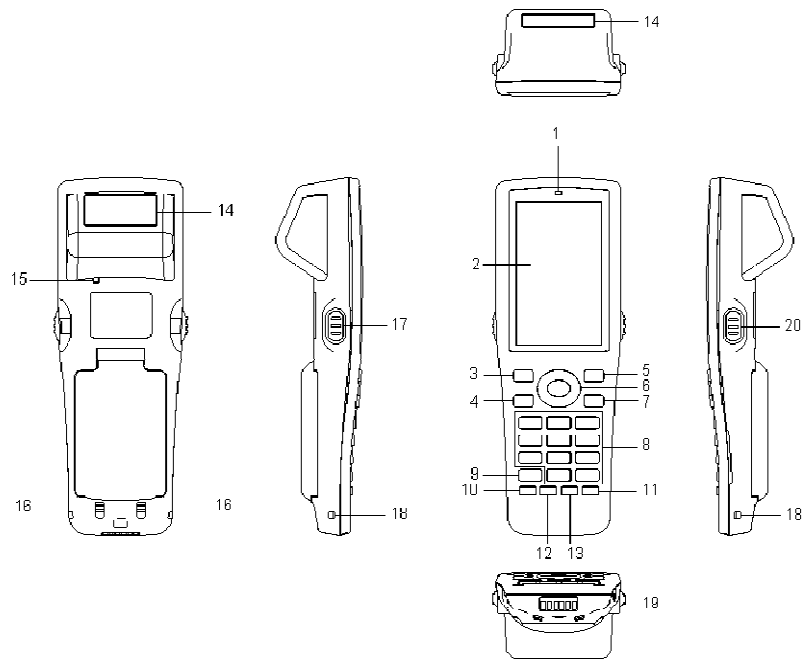
The product comply with the FCC portable RF exposure limit set forth for an uncontrolled environment and are safe for intended operation as described in this manual. The further RF exposure reduction can be achieved if the product can be kept as far as possible from the user body or set the device to lower output power if such function is available.

Safety Information

Please read the following information carefully before using the device for the first time, and keep this Quick Start Guide in a safe place for future reference.

- Always treat the device with care and keep it in a clean and dust-free environment.
- Do not expose the device to extremely hot, cold or humid environment.
- Do not use the device in wet or rainy conditions.
- Do not charge the device in extremely hot or cold conditions.
- Do not attempt to disassemble or modify the device including the charger.
- Do not stare directly into the laser beam, or direct the laser beam into eyes.
- Do not operate the device when your hands are wet.
- Do not insert foreign objects into the openings of the device.
- Use only the charger and battery approved for the device.
- Install the cradle on a flat and stable surface. Use only recommended mounting accessory.
- Do not cascade over 5 cradles.
- Do not use the charger if the power cord or plug is damaged.
- Do not disassemble, crush or puncture the battery.
- Do not expose the battery to high temperatures.
- Do not let battery terminals touch other metal objects that could lead to short-circuit of the battery.
- Do not dispose of the battery in fire or water.
- Dispose of used battery properly according to local laws and regulations.

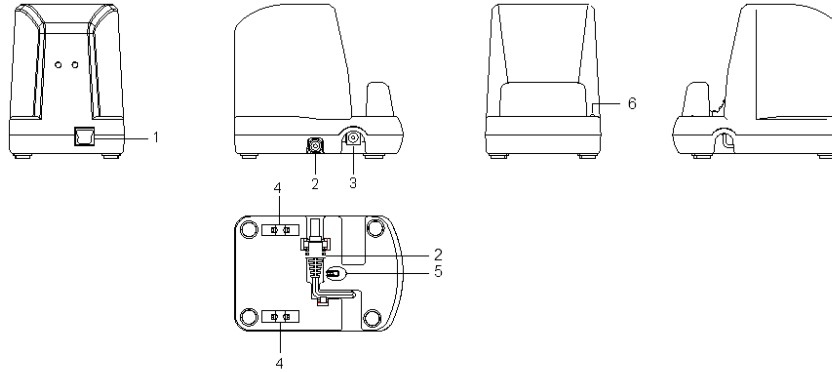
Handy Terminal



No.	Item	Description
1	LED Indicator	Power status indicator
2	LCD Screen	LCD Display
3	Function Key F1	Configurable Function Key F1
4	Function Key F2	Configurable Function Key F2
5	Function Key F3	Configurable Function Key F3
6	Navigation key	5-way Navigation Key (Up, Down, Left, Right, Enter)
7	Function Key F4	Configurable Function Key F4
8	Alphanumeric keys	Number, Alphabet, Hiragana, symbol input keys
9	Clear Key	Clear input character
10	Mode Key	Change mode
11	Power Key	Turn unit On and Off
12	Volume Key	Adjust volume

13	Backlight Key	Adjust LCD backlight brightness
14	Barcode Reader	Laser emission aperture for barcode scanning
15	Reset Key	Soft reset key
16	Battery Cover Lock Switch	Lock and release battery cover
17	Left Trigger Key	Trigger for barcode scanning
18	Hand Strap Hole	Attaching hand strap
19	Cradle connector	Charging and Data communication port to the cradle
20	Right Trigger Key	Trigger for barcode scanning

Cradle



No.	Item	Description
1	Ethernet Connector	Ethernet connection to PC for data transfer
2	DC Power Cable	Extension power cable for cascading cradles
3	DC Power Connector	Plug with adaptor cable or Cradle DC Power Cable
4	Mounting lock	Lock cradle mounting accessory plate
5	Handy Terminal Release Key	Manual lock release of Handy Terminal from cradle
6	LED indicator	Power indicator

Install the battery

1. Turn over the Handy Terminal.
2. Slide the battery cover lock switches simultaneously in the direction shown until the battery cover is released.



3. Lift up the battery cover.
4. Insert the battery into the battery compartment. Refer to battery label for the correct orientation.
5. Press the battery cover down firmly until the battery cover lock switches are returned to lock position.

Remove the battery

1. If the Handy Terminal is on, press and hold the power button to turn it off.
2. Turn over the Handy Terminal.
3. Slide the battery cover lock switches simultaneously until the battery cover is released.
4. Lift the battery cover; and remove the battery from the battery compartment.

Charging the Handy Terminal

1. Connect the AC/DC adaptor to the DC power connector of the cradle.
2. Plug the other end of adaptor into an electrical outlet. The cradle power LED will turn green when power is supplied to the cradle.
3. Place the Handy Terminal to the cradle slot.
4. Handy Terminal LED will turn Red for charging. When charging is complete, the LED will be off.

Power Status LED Description

LED colour	Description
Red	Charging
Off	Fully Charged

Turning Handy Terminal On and Off

Turn on the Handy Terminal

Press and hold the Power key for 2 seconds to turn on the Handy Terminal.












Turn off the Handy Terminal

When the Handy Terminal is on, press and hold the Power key for 2 seconds to turn it off.

Suspend the Handy Terminal

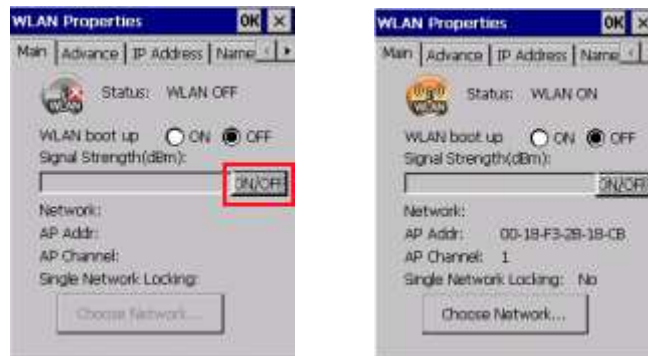
If Handy Terminal has been turned on, press the Power key to suspend, so as to save power.

Status Bar Icon Description

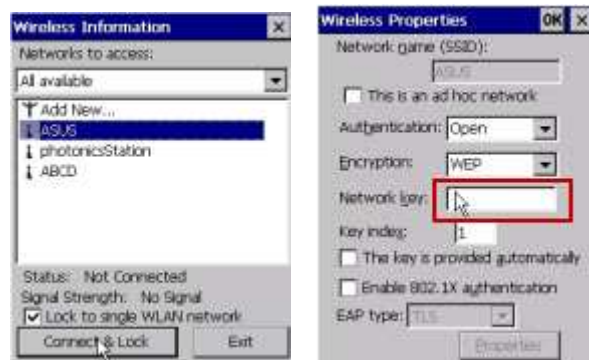
	ActiveSync connection
	WLAN connected
	WLAN searching
	WLAN off
	WLAN auto off
	Bluetooth Off: Grey Bluetooth Scanning: Yellow Bluetooth On: Blue
	Battery indicator
	Battery charging
	Tap to show input keyboard Tap and hold to select input method
	Tap to switch application
	Start menu

Connecting WLAN

1. Select My Device > Control Panel > WLAN
2. In WLAN Properties, select ON/OFF button to turn WLAN on.



3. Select Choose Network to search for available WLANs within range
4. Select the desired WLAN > Connect & Lock
5. Enter Network key and select OK



To view IP information, select IP information in WLAN Properties



To unlock the fixed SSID connection, select the connected WLAN and then select Unlock.



Connecting Bluetooth

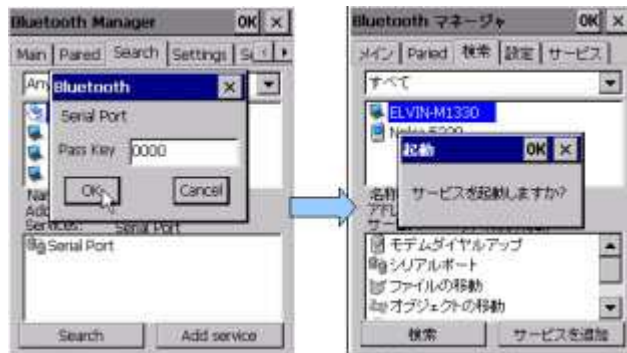
1. Select My Device > Control Panel > Bluetooth
2. In Bluetooth Manager, select ON/OFF button to turn Bluetooth on.



3. Select Search > Search
4. Select the desired device > preferred service type > Add Service



5. Enter Bluetooth pass key > OK > OK



Cascading Multiple Cradles

1. Release the DC power extension cable from locking position at the bottom of cradle.
2. Plug the DC power extension cable to the DC power connector of another MT-3000 cradle.
3. Repeat above steps to connect up to maximum 5 MT-3000 cradles together.

To fix the cascading cradles firmly, it is recommended to mount the cradles with the optional mounting plate accessories on a flat and stable surface.

Copyright©2011 Teraoka Seiko Co., Ltd

All rights reserved.

<http://www.teraokaseiko.com>