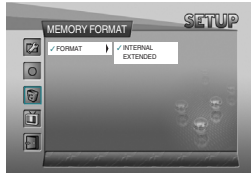


Using a Setup Menu

MEMORY FORMAT



- **FORMAT**
INTERNAL: Use to delete all the files in the built-in memory.
EXTENDED: Use to delete all the files in the external SD card.

PICTURE SETUP



- **BRIGHTNESS**
Use to adjust the brightness of the LCD window.
- **CONTRAST**
Use to adjust the sharpness of the LCD window.

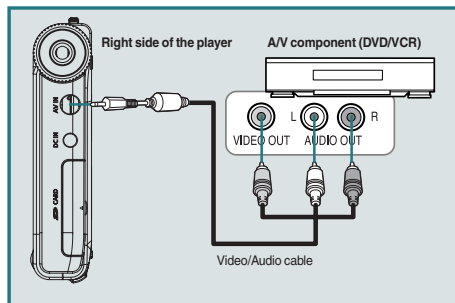
SETUP EXIT



The Setup menu will disappear and the menu screen will be displayed.

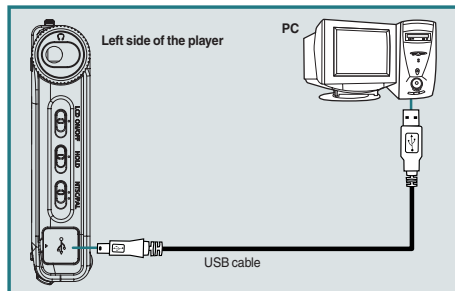
Connecting an External Component and USB

Connecting an AV Component



- Connect a Video/Audio cable between the A/V component (DVD/VCR) and the player.

Connecting USB



Note

- When moving, copying, or deleting a file through USB, remove the USB after making sure that the USB connection message window disappears. During the connection of USB, all the buttons on this player do not operate.

- Connect an USB cable between a PC (Windows ME, Windows 2000, Windows XP) and the player.
- Enter Windows Explorer after USB is recognized by the PC.
- This player is displayed as a portable disc in the list of folders of Windows Explorer.
- Methods of copying or deleting a file with a portable disc are same with the using methods in Windows.

Installing and Using Transcoder

Using Environment

[PC requirements]

- Pentium III 500 MHz at least
- Memory: 256MB at least
- Microsoft DirectX supported VGA
- Sound card-required

[OS]

- Microsoft Windows ME/Windows 2000/Windows XP

[Codec]

- Divx 5.1.1, Divx 4.01, Divx 4.11, or Divx 4.12
Visit at the web site
http://www.divx.com/divx/?src=toptab_divx_from_/index.php
and download the Standard Divx codec for installation.
- DivxG400 or DirectVobSub
- Combined codec for the execution of media files

[Others]

- Microsoft DirectX 8.0 at least

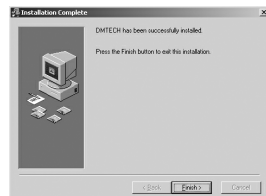
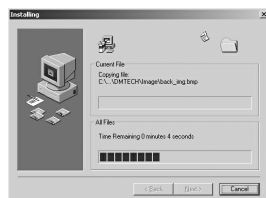
Installing Transcoder

1 Insert the supplied installation CD and execute "DMTransCoder.EXE".

2 Select "Next".

3 As shown in the figure right, the process of program installation is displayed.

4 After installation is complete, select "Finish" to end installation.



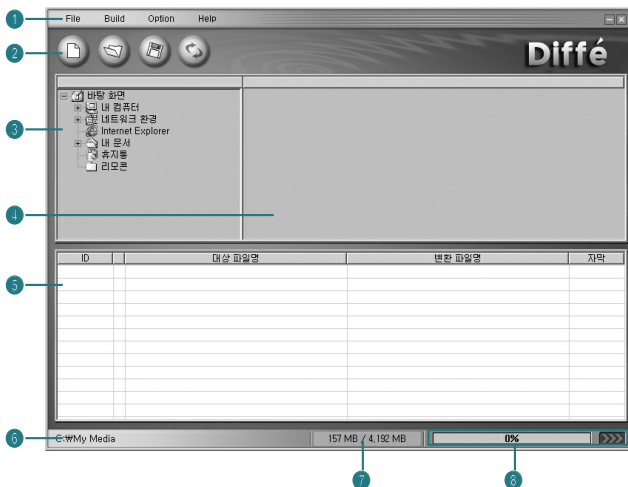
Executing Transcoder

Select the menus at the right bottom of Windows in the following sequence: "Start" → "Program (P)" → "DMPProject" → "DMTCoder". Or double click "DMTCoder()" on the Windows background screen.



Installing and Using Transcoder

Configuration and Function of Transcoder Screen



- ① Menu
- ② Function icon
- ③ File search window: This has the same function as Windows Explorer.
- ④ File list window: This has the same function as Windows Explorer.
- ⑤ Transcoded files list window: The files to be transcoded are displayed.
- ⑥ Location where the transcoded files are saved: This displays the location where the transcoded files are saved.
- ⑦ Capacitance of memory: This displays the capacitance of the location where the transcoded files are saved.
- ⑧ Display of transcoding progress: This displays the progress rate.

Menu

File	Build	Option
새 스케줄(N)		Ctrl+N
스케줄 열기(O)...		Ctrl+O
저장(S)		Ctrl+S
다른 이름으로 저장...		
Exit		

File

- New schedule: Calls a new file in the list of transcoded files.
- Open schedule: Applies the saved *.dmt files in the list of transcoded files.
- Save: Saves the contents of the operation which is under progress. in the list of transcoded files.
- Save As: Saves as another name.
- Exit: Exits the program.

Build	Option
변환(B)	Ctrl+B

Build

- Starts transcoding.

Option	Help
<input checked="" type="checkbox"/> 자막 F2	
<input checked="" type="checkbox"/> 미디어 파일 F3	
<input checked="" type="checkbox"/> 미디어 정보 F4	
새로고침 F5	
저장경로 F6	

Option

- Caption: If there is a caption file, whether to apply or not will be determined.
- Media file: Only media files are applied in the list.
- Media Info: Displays the files which can play without change. This is not available in any version after Windows XP.
- Return: Re-applies the file.
- Saving path: Applies the path of a file to be transcoded.

Help
정보(A) Ctrl+A

Help

- Guides product information and the whole web site.

Tool Bar



New schedule

- New schedule: Builds a new list of transcoded files.



Open schedule

- Open schedule: Calls a list of saved transcoded files.



Save

- Save: Saves the contents of the list of transcoded files under operation.



Start File Switching

- Start File Switching: Starts the schedule which is applied to the list of transcoded files.

Installing and Using Transcoder

Transcoding files



- 1 Select the location where has a file to be transcoded in the File Search window.
- 2 Drag a file to be transcoded in the File List window and move it into the Transcoded Files List window.
- 3 Select the "Transcoding (🔍)" function icon for execution.
- 4 The cursor in blue will be located on the file under transcoding and transcoding will proceed.
- 5 After transcoding is complete, the transcoded file will be saved in the specified location. The default folder is "C:\My Media".
- 6 The transcoded file can play by downloading it with a portable disc.

Note

- If Codec does not exist, the player will notice you through a message window. The message window disappears three seconds later and an icon in red appears on the list.
- If the saving space is not enough, the player will notice you through a message window. The message window disappears three seconds later and an icon in red appears on the list.
- If Caption does not exist, the player will operate without caption.
- If any version after Windows XP is used, the menu on media information cannot be used. (The function is not supplied by MS.)
- DivX Codec can be installed only after the user downloads Freeware.
- If Inter Video Sound Codec has been installed, the player may not play normally.
- Select either DirectVobSub or DivXG400 as a caption filter. (DirectVobSub is recommended)

Miscellaneous

Battery and Power

- Since this player adopts an exclusive lithium ion battery, it can charge itself and buff itself speedily within about two hours while it is completely discharged.
- When video plays while the player is buffed, the player can keep playing for about two hours. When only MP3 plays, the player can keep playing for about four hours.
- Depending on the user's convenience, the player can be charged by using a USB cable or adaptor.
 - Charging with a USB cable
Connect a USB cable between a PC and the player. Then the player will be charged automatically while it is turned off.
Note: The charge indication lamp lights on only during charging. After charging is complete, the lamp lights off.
 - Charging with an AC adaptor
The player can be charged with a AC adaptor included in the player.
Note: Even though the player is turned off, charging will continue.
The charge indication lamp lights on only during charging. After charging is complete, the lamp lights off.

Cautions on use

- There may be abnormality in a saved file when removing USB after the PC USB downloading operation is complete. Remove it safely after making sure that the message "USB CONNECTED FILE COPY" disappears.
- Be careful that an AC adaptor is not connected to the AV IN jack.
- While playing a file in the external memory, do not remove the external memory forcibly.
- This player supports USB2.0. If PC environment is USB1.1, however, this player will operate in USB1.1.
- When connecting USB, the operation of this player will be limited.
- Do not remove a battery forcibly during playback or recording.
- When charging the player with USB, turn it off first.

Troubleshooting

Symptom	Solution
The player is not turned on	<ol style="list-style-type: none"> 1. Check a battery or AC adaptor is installed 2. Check the battery is worn out. If so, charge it with an AC adaptor or USB cable. 3. Check the HOLD key or LCD OFF key is turned on. 4. Press the POWER button.
When connecting an A/V cable, the playback screen of an external component is not displayed normally	<ol style="list-style-type: none"> 1. Check an A/V cable is properly connected. 2. If the screen is biased upper or lower, check for the broadcasting system (NTSC or PAL)
Earphone volume is not output normally.	<ol style="list-style-type: none"> 1. Check for the level of volume. 2. Check for the connection of the earphone. (If there is a dirt or foreign material in the terminal, noise may occur.) 3. If the data of the file which is playing is damaged, noise may occur or sound may be interrupted. Check with another file.
Charging does not work or the charge indication lamp does not light on.	<ol style="list-style-type: none"> 1. Check for the connection of an AC adaptor. 2. Check for the installation of a battery. 3. Check whether the player is buffed or not.
An external memory (SD card) is not recognized normally.	<ol style="list-style-type: none"> 1. Check for the installation of an external memory. 2. Check for the WRITE PROTECT switch of an SD card. 3. This player supports only "FAT and FAT16" formats.
A downloaded moving image file does not play	Play the moving image file after transcoding it through the included TRANSCODER PROGRAM.

Specifications

Model		DM-AV10
Size (Wx D x H)		96mm x 79mm x 80mm
Weight		Including battery: 133g/Without battery: 107g
Audio	Frequency characteristics	70Hz ~ 20KHz
	Headphone output	20mW, Impedance: 16ohm
	S/N	90dB or larger (based on MP3)
Supported files	Video	Direct playback: AVI (Video: ISO MPEG-4, Audio: MP3) Trans S/W used: WMV, ASF, AVI, MPEG, MPG, WMA
	Audio	MP3, ID3 Tag ver1.1
	Image	JPEG
Incoding	Video/Audio	MPEG-4/MP3, Extension = asf
	Audio	MP3
Recording time (based on the built-in memory)	ECONOMY	100 minutes
	NORMAL	55 minutes
	FINE	30 minutes
Picture display		3.5" Color TFT LCD, 480 x 240 Dot
		NTSC/PAL (selectable)
PC connection		USB 2.0
Memory type	Built-in	128MB FLASH MEMORY
	Extended	SD card slot (8MB ~ 1GB)
Battery use time		Video playback: two hours
		Audio playback: four hours (LCD OFF mode)
Power specification		DC 5V 2.0A adaptor
		DC 3.7V, 1100mA lithium ion battery
Recommended system specification	OS	Windows ME/Windows 2000/Windows XP
	CPU	Pentium III 500MHz at least
	Memory	256MB

NOTE: This equipment has been tested and found to comply with the limits for a Class B digital device, pursuant to part 15 of the FCC Rules. These limits are designed to provide reasonable protection against harmful interference in a residential installation. This equipment generates, uses and can radiate radio frequency energy and, if not installed and used in accordance with the instructions, may cause harmful interference to radio communications. However, there is no guarantee that interference will not occur in a particular installation. If this equipment does cause harmful interference to radio or television reception, which can be determined by turning the equipment off and on, the user is encouraged to try to correct the interference by one or more of the following measures:

- Reorient or relocate the receiving antenna.
- Increase the separation between the equipment and receiver.
- Connect the equipment into an outlet on a circuit different from that to which the receiver is connected.
- Consult the dealer or an experienced radio/TV technician for help

THIS DEVICE COMPLIES WITH PART 15 OF THE FCC RULES. OPERATION IS SUBJECT TO THE FOLLOWING TWO CONDITIONS: (1) THIS DEVICE MAY NOT CAUSE HARMFUL INTERFERENCE, AND (2) THIS DEVICE MUST ACCEPT ANY INTERFERENCE RECEIVED, INCLUDING INTERFERENCE THAT MAY CAUSE UNDESIRED OPERATION.

THE MANUFACTURER IS NOT RESPONSIBLE FOR ANY RADIO OR TV INTERFERENCE CAUSED BY UNAUTHORIZED MODIFICATIONS TO THIS EQUIPMENT. SUCH MODIFICATIONS COULD VOID THE USER'S AUTHORITY TO OPERATE THE EQUIPMENT