

How to Install the Windows 98 USB Driver

Windows 98 users should first install the USB driver for the operating system. Users of later versions of Windows do not need to install the USB driver, it will be automatically recognized as a removable disk. Follow the instructions below to install the USB driver:

To install the USB driver

❶ Insert the installation CD into your CD-ROM drive.

The USB driver is included in the "WIN98_USB_Driver" folder of the Transcoder CD.

❷ Use the USB cable that ships with the player to connect it to your PC.

When the "Add New Hardware Wizard" appears

1. When the "Add New Hardware Wizard" window appears, click on Next.
2. Select "Search for the Best Driver for This Device (Recommended)" and click Next.
3. Select "CD-ROM Drive" and click Next.
4. Identify the device that you want to locate a driver for and click on Next.
5. When you see the "Copying Files" dialog box, select Browse.
6. Select the "WIN98_USB_Driver" folder on the CD-ROM and click OK.
7. In the "Copying Files" dialog box, click OK.
8. Select Finish.
9. In Windows Explorer, a "removable disk" drive will have been created.

When the driver is not properly recognized on the first connection

1. Select Start > Control Panel.
2. Select System from the Control Panel.
3. Select "Device Manager" and check for any incompletely installed USB devices.
4. Select USB Device from Other Devices and click on Properties.
5. Select "Reinstall Driver" at the bottom of the dialog box.
6. In the "Device Driver Update Wizard" dialog box, click on Next.
7. Check the "Search for the latest driver (Recommended)" box and click on Next.
8. Select "CD-ROM Drive" and click Next.
9. Select "Updated Driver (recommended)" and click Next.
10. Make sure that the "device to search a driver for" is "DM Technology AV Player" and select Next.
11. The installation is completed successfully.

Installing and Using Transcoder

Using Environment

[PC requirements]

- Pentium III 1G at least
- Memory: 256MB at least
- Microsoft DirectX supported VGA
- Sound card-required

[OS]

- Microsoft Windows ME/Windows 2000/Windows XP

[Codec]

- Divx 5.1.1
Visit at the web site
<http://download.divx.com/divx/DivX511.exe> and download Divx codec for installation.
- A unified codec for running media files on a PC.
A unified codec must be installed on the PC to run a file normally.

[Others]

- Microsoft DirectX 8.0 at least
- Microsoft Windows Media Player 9.0

Installing and Using Transcoder

Installation Guide

Transcoder software decodes files such as WMV, ASF, AVI, MPEG, MPG, WMA, MPGA, VOB and DAT so that the files can be played.

Most files having the video formats, MPEG4-SP and DivX Ver 3.11, and audio formats, 4.0, 5.03 SP and MPEG1 Layer3 (MP3), can be played without being transformed.

Use a Transcoder for files that do not play,

The following programs will be installed to your PC.

1. DivX 5.11 Bundle
2. All Codec Packs Link
3. Microsoft Windows Media Player 9.0
4. DirectX9.0
5. Transcoder

Insert the CD that came with the product into your PC to start the installation process.

Note

You can download files from the Internet by using the enclosed CD.
The download time may differ according to the kind of Internet connection.
If you insert the CD into your PC, the following menu will appear.



Note

Make sure to select the icons sequentially starting from the top of the MENU window in this order to install all five programs.
Refer to the Installation Guide and the Q&A at the bottom of the MENU for the installation methods

Installing Transcoder

- 1 Insert the supplied installation CD and execute "TransCoder.EXE".



- 2 Select "Next".



- 3 As shown in the figure right, the process of program installation is displayed.



- 4 After installation is complete, select "Finish" to end installation.

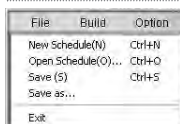


Executing Transcoder

Select the menus at the right bottom of Windows in the following sequence: "Start" → "Program (P)" → "TRANSCODER" → "TRANSCODER". Or double click "TRANSCODER()" on the Windows background screen.



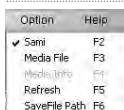
Menu



- **File**
 - New Schedule: Calls a new file in the list of transcoded files.
 - Open Schedule: Applies the saved *.dmt files in the list of transcoded files.
 - Save: Saves the contents of the operation which is under progress. in the list of transcoded files.
 - Save As: Saves as another name.
 - Exit: Exits the program.



- **Build**
 - Starts transcoding.



- **Option**
 - Sami: If there is a caption file, whether to apply or not will be determined.
 - Media File: Only media files are applied in the list.
 - Media Info: Displays the files which can play without change. This is only available for Windows 2000.
 - Refresh: Re-applies the file.
 - SaveFile Path: Applies the path of a file to be transcoded.



- **Help**
 - About: Guides product information and the whole web site.

Tool Bar



New schedule - New schedule: Builds a new list of transcoded files.



Open schedule - Open schedule: Calls a list of saved transcoded files.



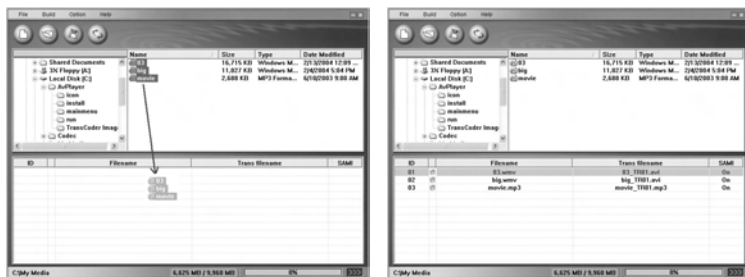
Save - Save: Saves the contents of the list of transcoded files under operation.



Start File Switching - Start File Switching: Starts the schedule which is applied to the list of transcoded files.

Installing and Using Transcoder

Transcoding files



- 1 Select the location where has a file to be transcoded in the File Search window.
- 2 Drag a file to be transcoded in the File List window and move it into the Transcoded Files List window.
- 3 Select the "Transcoding (🔍)" function icon for execution.
- 4 The cursor in blue will be located on the file under transcoding and transcoding will proceed.
- 5 After transcoding is complete, the transcoded file will be saved in the specified location. The default folder is "C:\My Media".
- 6 The transcoded file can play by downloading it with a portable disc.

Note

- If Codec does not exist, the player will notice you through a message window. The message window disappears three seconds later and an icon in red appears on the list.
- If the saving space is not enough, the player will notice you through a message window. The message window disappears three seconds later and an icon in red appears on the list.
- If Caption does not exist, the player will operate without caption.
- DivX Codec can be installed only after the user downloads Freeware.
- Combined Codec can be installed only after the user downloads Freeware.
- If Inter Video Sound Codec has been installed, the player may not play normally.
- If there are any errors in the files to be converted, this may result in the file being corrupted.
- When the quality of an original file is not good, errors may occur in the transformed file. Files that are interrupted when playing in Windows Media Player or do not have index information may have poor quality.
- Refer to the INSTALLATION GUIDE and the Q&A on the CD for installation details and possible problems.

Miscellaneous

Battery and Power

- You can use two AA-sized alkaline batteries or Ni-MH rechargeable ones only.
- Check the polarity (+ or -) of the battery before inserting it.
- Using a weak battery for an extended time can cause a player malfunction.
- When you turn on the power and the player does not operate with the status indicator blinking, replace the battery as this may be due to an inadequate battery capacity.
- Make sure you check the rated voltage when you use an adapter to power on. (DC3V, 0.5A)
- The useful life of the battery differs depending on the model.

Cautions on use

- There may be abnormality in a saved file when removing USB after the PC USB downloading operation is complete. Remove it safely after making sure that the message "USB CONNECTED TRANSFERRING FILES" disappears.
- Be careful that an AC adaptor is not connected to the AV IN jack.
- While playing a file in the external memory, do not remove the external memory forcibly.
- When connecting USB, the operation of this player will be limited.
- Do not remove a battery forcibly during playback or recording.
- It is recommended using a new battery or an adapter when you want to upgrade the player.

Troubleshooting

Symptom	Solution
The player is dead.	<ol style="list-style-type: none"> 1. Check a battery or AC adaptor is installed 2. Check the HOLD switch or LCD ON/OFF switch is turned on. 3. Press the POWER button.
When connecting an A/V cable, the playback screen of an external component is not displayed normally	Check an A/V cable is properly connected.
Earphone volume is not output normally.	<ol style="list-style-type: none"> 1. Check for the level of volume. 2. Check for the connection of the earphone. (If there is a dirt or foreign material in the terminal, noise may occur.) 3. If the data of the file which is playing is damaged, noise may occur or sound may be interrupted. Check with another file.
An external memory (SD card) is not recognized normally.	<ol style="list-style-type: none"> 1. Check for the installation of an external memory. 2. Check for the WRITE PROTECT switch of an SD card. 3. This player supports only "FAT and FAT16" formats.
A downloaded moving image file does not play	Play the moving image file after transcoding it through the included TRANSCODER PROGRAM.

THIS DEVICE COMPLIES WITH PART 15 OF THE FCC RULES. OPERATION IS SUBJECT TO THE FOLLOWING TWO CONDITIONS: (1) THIS DEVICE MAY NOT CAUSE HARMFUL INTERFERENCE, AND (2) THIS DEVICE MUST ACCEPT ANY INTERFERENCE RECEIVED, INCLUDING INTERFERENCE THAT MAY CAUSE UNDESIRE OPERATION.

NOTE: THE MANUFACTURER IS NOT RESPONSIBLE FOR ANY RADIO OR TV INTERFERENCE CAUSED BY UNAUTHORIZED MODIFICATIONS TO THIS EQUIPMENT. SUCH MODIFICATIONS COULD VOID THE USER'S AUTHORITY TO OPERATE THE EQUIPMENT.

NOTE: This equipment has been tested and found to comply with the limits for a Class B digital device, pursuant to part 15 of the FCC Rules. These limits are designed to provide reasonable protection against harmful interference in a residential installation. This equipment generates, uses and can radiate radio frequency energy and, if not installed and used in accordance with the instructions, may cause harmful interference to radio communications. However, there is no guarantee that interference will not occur in a particular installation. If this equipment does cause harmful interference to radio or television reception, which can be determined by turning the equipment off and on, the user is encouraged to try to correct the interference by one or more of the following measures:

- Reorient or relocate the receiving antenna.
- Increase the separation between the equipment and receiver.
- Connect the equipment into an outlet on a circuit different from that to which the receiver is connected.
- Consult the dealer or an experienced radio/TV technician for help